



Coronado Performing Arts Center

TECHNICAL INFORMATION

314 N Main Street - Rockford, IL 61101

(815) 968-5222

www.coronadopac.org

CONTACT INFORMATION

| | | |
|----------------------------------|--|--|
| General Manager | Troy Flynn Office: 815-972-3000 | tflynn@asmrockford.com Cell: 610-812-7724 |
| Booking Manager | Kristen O'Halloran Office: 815-489-8234 | kohalloran@asmrockford.com Cell: 701-371-3509 |
| Director of Operations | Mike Walsh Office: 815-489-8240 | mwalsh@asmrockford.com Cell: 815-621-9277 |
| Security Services Manager | Jim Lawson Office: 815-489-8239 | jlawson@asmrockford.com Cell: 815-222-2242 |
| Director of Ticketing | Jena Keith Office: 815-489-8258 | jkeith@asmrockford.com Cell: 815-222-0015 |
| Production Manager | Christopher Smith Office: 815-847-6319 | csmith@asmrockford.com Cell: 248-376-0590 |
| Catering Manager | Jacqui Frederick Office: 815-489-8213 | jfrederick@asmrockford.com Cell: 815-222-0106 |

TECHNICAL VENDORS

| | |
|---------------------------|--|
| Creative Audio | Audio, Video, Lighting, Staging 4787 Hydraulic Road - Rockford, IL 61109 www.creativeaudio.us 815-713-3425 |
| Upstaging, Inc. | Production services, Theatrical Lighting, Transport Trucking 821 Park Ave. Sycamore, IL 60178 www.upstaqqing.com 815-899-9888 |
| North Park Rentals | Staging, Party Needs, Pipe/Drape, Festival Equipment 9624 N. Second St. Machesney Park, IL 61115 www.northparkrental.com 815-633-9234 |
| Valley Expo | Exhibitor Services, Rental Displays, Graphics 4950 American Rd.- Rockford, IL 61109 www.valleyexpodisplays.com 815-873-1500 |
| Sound Concepts | Sound and Lighting Equipment Rental 1121 North Prospect St, Rockford, IL 61107 815-378-8732 |

LOCAL INFORMATION

Hospital

Swedish American Hospital
1401 E. State Street
Rockford, IL 61104
www.swedishamerican.org
815-968-4400

Pharmacy

Walgreen's Pharmacy
1201 E. State Street
Rockford, IL 61104
815-962-2812

Grocery

Schnuck's
2642 Charles Street
Rockford, IL 61104
www.schnucks.com
815-484-2461

Wal Mart

Wal Mart Superstore
3902 W. Riverside Blvd.
Rockford, IL 61101
815-962-4763

Airport

Chicago/Rockford International Airport
2 Airport Circle
Rockford, IL 61109
www.flyrfd.com
815-359-7331

Shopping

CherryVale Mall
7200 Harrison Ave.
Rockford, IL 61112
www.shopcherryvalemall.com
815-332-2440

Office Services

FedEx Office
6240 Mulford Village Rd.
Rockford, IL 61107
815-229-0033

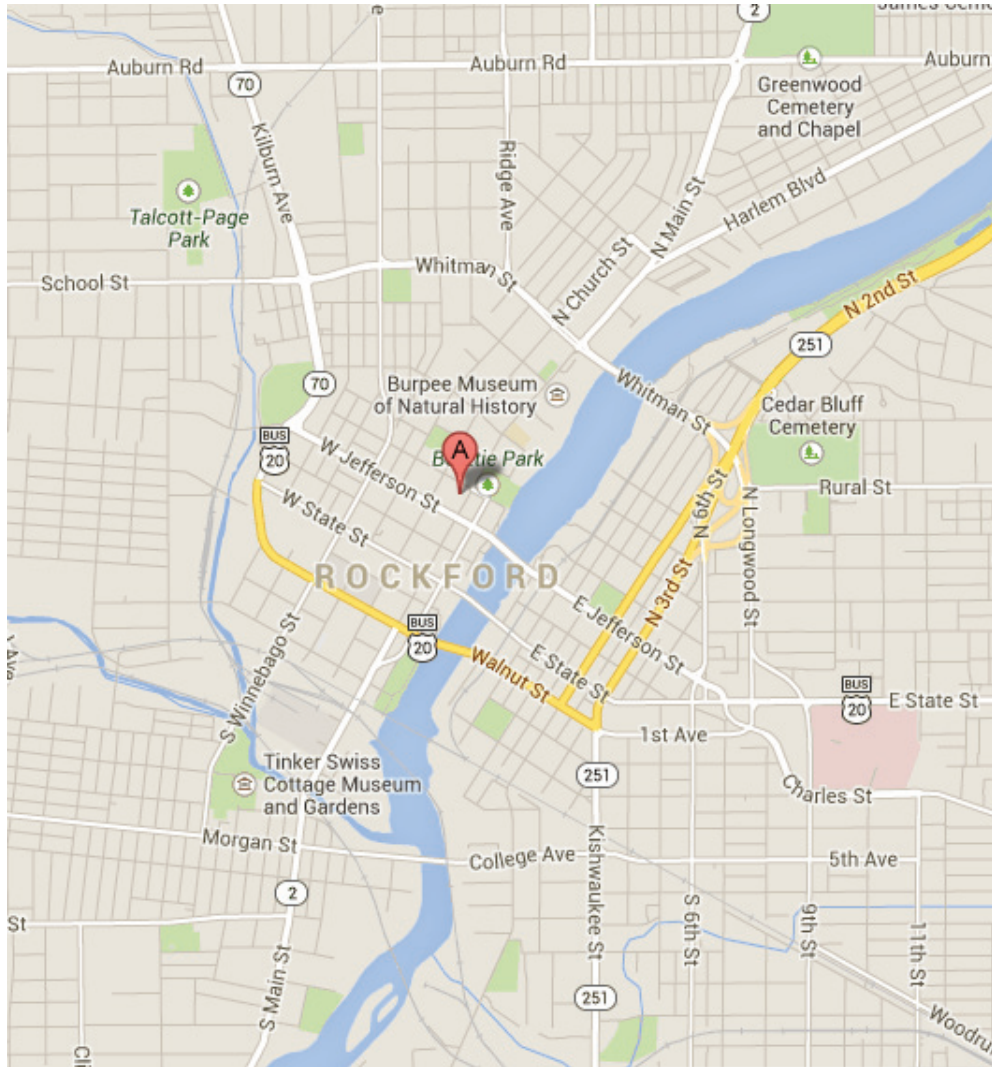
Post Office

USPS
401 S. Main Street
Rockford, IL 61101
815-962-5940

Newspaper

Rockford Register Star
99 E. State Street
Rockford, IL 61104
www.rrstar.com
815-987-1200

DIRECTIONS



FROM NORTH

From I-90 East

Follow I-90 to US Business Route 20 West (E. State St.) exit [*see optional route below]. Merge onto E. State St. and follow for approximately 7 miles through town. Turn right (north) onto Jefferson St. (Amoco Station/McDonalds is at northeast corner of intersection, on right). Follow Jefferson St. across river to the second traffic light. Turn right (north) onto N. Main St. The Coronado Theatre is on the left. Event parking is in the deck on the right. Additional event parking space is available in the lower level of the parking deck accessed by turning right (north) on Wyman St., the first traffic light after crossing the river on Jefferson St.

FROM SOUTH

From I-39 North

Follow I-39 North to US Route 20 West (Freeport-5 Rockford Exits). Follow US Route 20 to the third exit, IL Route 2 North (Main St.). Exit right (north) and follow Main St. for approximately 2 miles where IL Route 2 splits to the right onto Wyman St. Follow Wyman St. to fifth traffic signal, W. Jefferson St. Turn left (west) onto W. Jefferson St. into far (right) lane. At first traffic light turn right (north) onto N. Main St. The Coronado Theatre is on the left. Event parking is in the deck to the right. Additional event parking space is available in the lower level of the parking deck accessed by continuing (north) on Wyman St. for a ½ block past W. Jefferson St. to deck on left.

FROM EAST

From I-90

If coming on I-90 from Chicago or Wisconsin, take the East State Street exit (Business Route 20). Merge right (west) onto East State Street and follow for approximately 7 miles through town. Continue to follow the marked Business 20 route through the downtown area. Turn right onto Jefferson Street (Amoco Station/McDonalds is on your right). Follow Jefferson Street across river to 2nd traffic signal. Turn right (north) onto North Main Street. The Coronado Theatre is in the middle of the block on your left. Event parking is on the right in the parking deck (directly across from the theatre entrance).

If coming on Business Route 20 from the east, follow marked route until junction with I-90, and then follow directions above.

From I-88

Take I-88 west to I-39 North. Follow I-39 North to US Route 20 West (Freeport-5 Rockford Exits). Follow US Route 20 to the third exit, IL Route 2 North (Main St.). Exit right (north) and follow Main St. for approximately 2 miles where IL Route 2 splits to the right onto Wyman St. Follow Wyman St. to fifth traffic signal, W. Jefferson St. Turn left (west) onto W. Jefferson St. into far (right) lane. At first traffic light turn right (north) onto N. Main St. The Coronado Theatre is on the left. Event parking is in the deck to the right. Additional event parking space is available in the lower level of the parking deck accessed by continuing (north) on Wyman St. for a ½ block past W. Jefferson St. to deck on left.

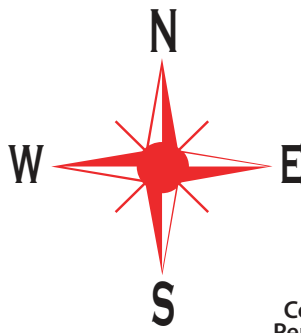
FROM WEST

Take US Route 20 East to US Business Route 20 East (W. State St.) [* see optional route below]. Follow W. State St. east for approximately 6 miles until you reach Wyman St. Turn left onto Wyman St. and follow to second traffic signal, W. Jefferson St. Turn left (west) onto W. Jefferson St. into far (right) lane. At first traffic light turn right (north) onto N. Main St. The Coronado Theatre is on the left. Event parking is in the deck on the right. Additional event parking space is available in the lower level of the parking deck accessed by continuing (north) on Wyman St. for a ½ block past W. Jefferson St. to deck on left.

* To avoid the traffic signals of W. State St. remain on US Route 20 until the IL Route 2 North (Main St.) exit. Follow Main St. north for approximately 2 miles where IL Route 2 splits to the right onto Wyman St. Follow Wyman St. to fifth traffic signal, W. Jefferson St. Turn left (west) onto W. Jefferson St. into far (right) lane. At first traffic light turn right (north) onto N. Main St. The Coronado Theatre is on the left. Event parking is in the deck on the right. Additional event parking space is available in the lower level of the parking deck accessed by continuing (north) on Wyman St. for a ½ block past W. Jefferson St. to deck on left.

PARKING

Trucks & buses park on Park Ave. where Stage Door is located. After Load in, some trucks may be staged at Davis Park, which is located 6 blocks away.



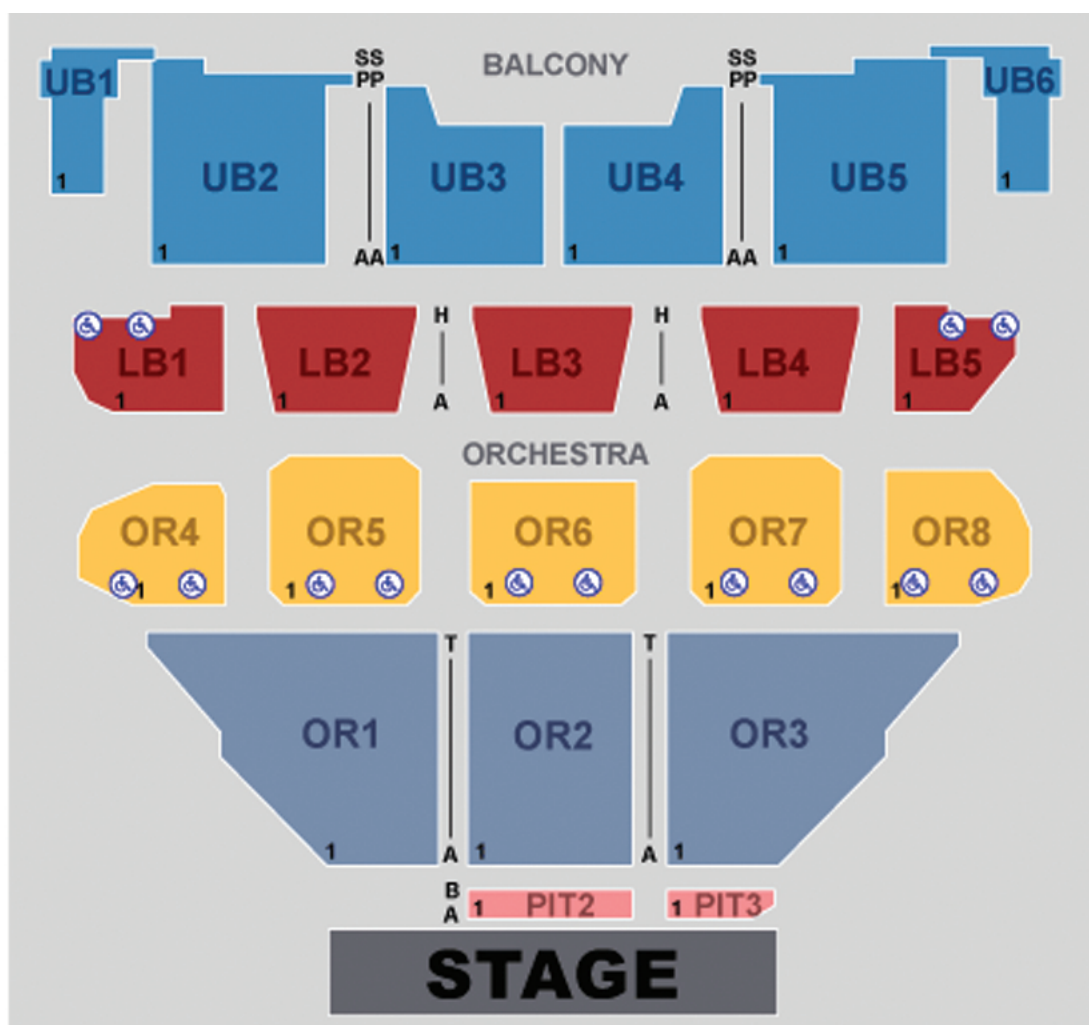
Coronado
Performing
Arts Center



SEATING

| | |
|---------------|-------------|
| Main Floor | 1169 |
| Lower Balcony | 373 |
| Upper Balcony | 737 |
| Pit | 30 |
| Total | 2309 |

Seating Diagram - note the lower balcony row A hangs over row P in OR1, OR2 and OR3. Mix is last two rows in OR6.



[ticketmaster](#)

- - ORCHESTRA PIT
- - FRONT ORCHESTRA
- - LOWER ORCHESTRA
- - FRONT BALCONY
- - UPPER BALCONY
- ♿ - ACCESSIBLE

SEAT MAP

STAGE

ORGAN

OR3

OR2

OR1

OR8

OR7

OR6

OR5

OR4

LB5

LB4

LB3

LB2

LB1

UB5

UB4

UB3

UB2

UB1

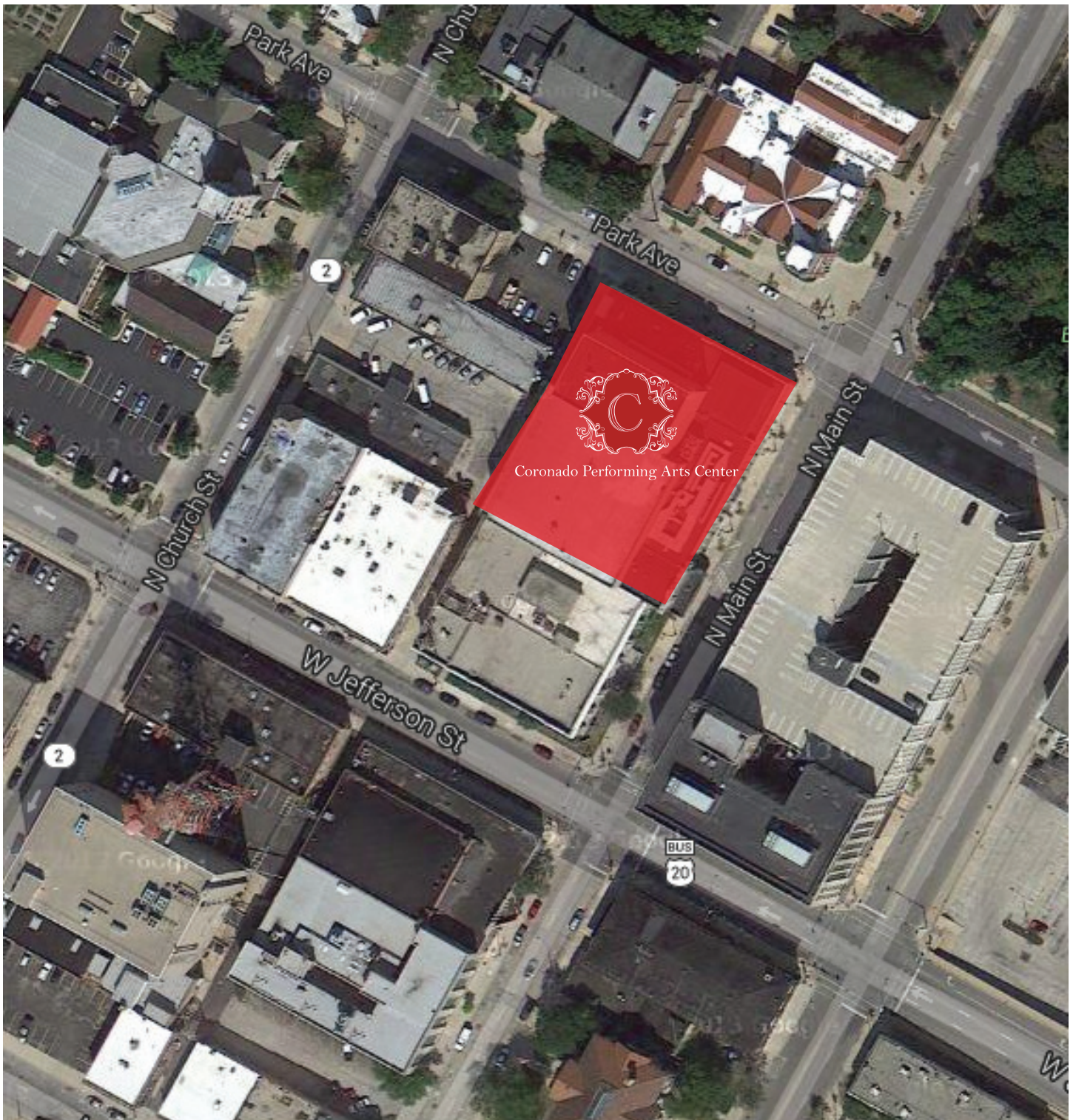
UB6

Coronado
Theatre

LOAD IN

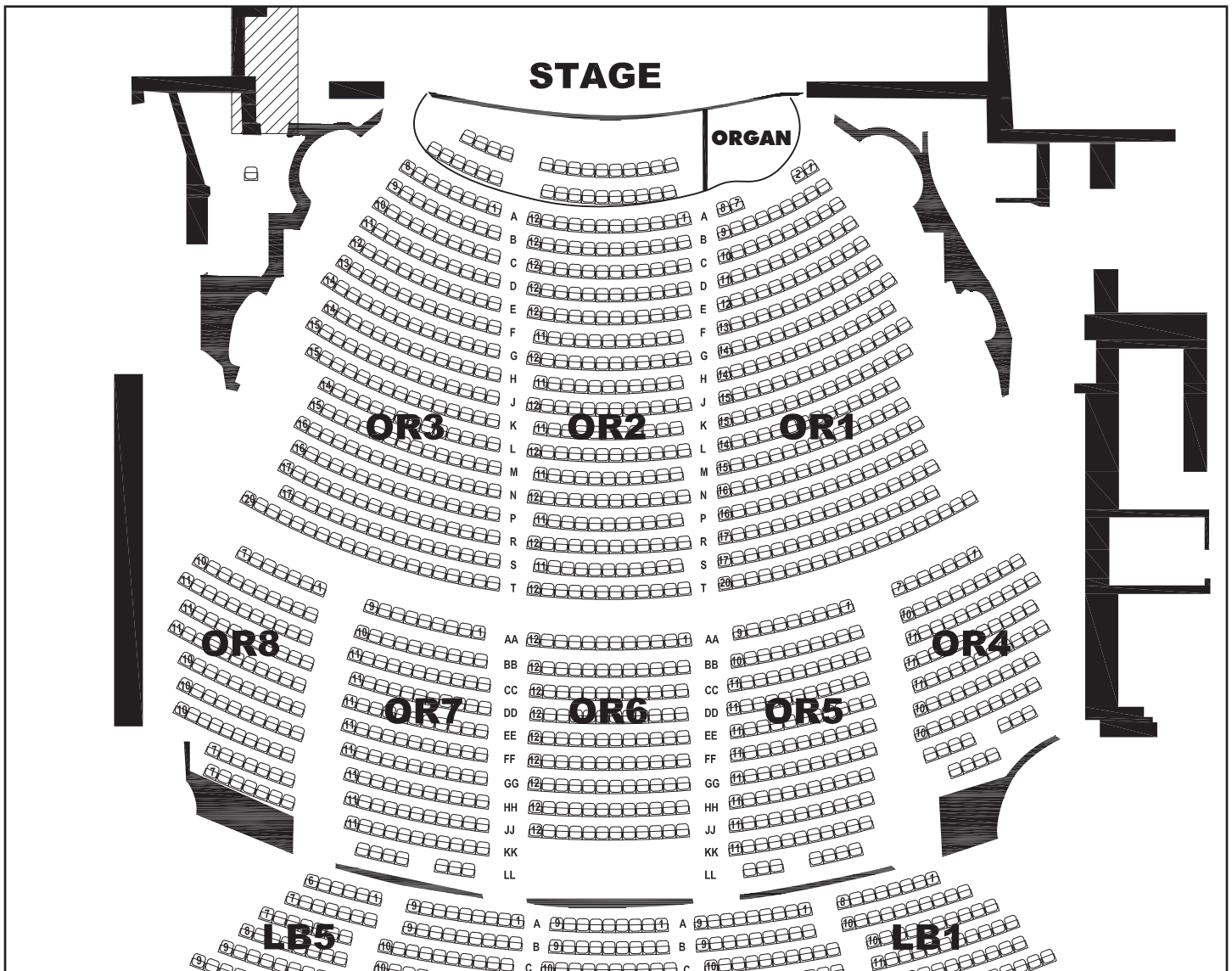
Load In:

Loading is done by ramping off truck to the street (Park Ave.) and then through two (2) 9'h x 12'w loading doors to USL. Door one is exterior with concrete ramp to interior/stagehouse door on deck level. Loading Dock is 400 SF with space available in backstage hallway to store excess cases, etc.



STAGE

| | |
|----------------------------------|------------------------------|
| Proscenium Opening: | 50' W x 35' H |
| Curtain Line to Upstage Wall: | 45' |
| Center Line to Stage Right: | 39' |
| Center Line to Stage Left: | 43' |
| Plaster Line to Balcony Rail: | 52' |
| Plaster Line to Back Wall (FOH): | 98' |
| Plaster Line to Mix Position: | 90' |
| Pit Dimensions: | 35' x 9' (see diagram below) |
| Height of Grid from Stage Floor: | 73' |
| Line Set Travel Height: | 70' |
| Number of Line Sets: | 48 usable |
| Arbor Capacity: | 2000 lbs. |
| Truss Batten Length: | 56' |
| Rigging Downstage of Proscenium: | NO |



ELECTRICS

Sensor SP9620 dimmer rack with Forty-eight (48) D20E Dual 20A dimmer Modules (96 dimmers)

Thirty-two (32) 6 circuit 19 pin inputs (socopex type)

96 stage pin panel inputs

Dimmer rack is located St.Left 25'h on dimmer bay; accessible by stairs

House Console is Express 48/96

In House DMX compatible

FOH position is 2 baskets 16' left and right of centerline.

Baskets are 12 feet wide by 8 feet high.

Each basket has 24 circuits available.

Each side ladder has 12 circuits available.

FOH and side- ladders are stage pin input

AUDIO

House tie in for center cluster and left / right mains available. **EAW** cabinets with **Crest** Power amps. House mic feed to all dressing rooms. Clearcom/paging system and hearing impaired audio system available.

Center Cluster AS660i - AS625 - AS660i
AS460 -AS422 - AS460

L&R MK2194 (two per side in an array mount
UB80 (two per side as down/in fills)

Subs SB528z (one per side)

LIGHT INVENTORY

Twelve (12) ETC Source Four 10*

Six (6) ETC Source Four 19*

Eight (8) ETC Source Four 26*

Thirty (30) ETC Source Four 36*

Ten (10) Strip Lights (three channel/six lamp)

Twenty-four (24) Strand 2K Fresnels

POWER

Lighting

1200 amps total available

Three (3) 400 amp services

3 Phase-Dual neutrals

Located stage left

Audio

One (1) 400 amp service located upstage right. Tied in to house sound and power.

Additional Service

One (1) 200 amp panel located at loading door to service remote recording vehicles.

DRESSING ROOMS

| | |
|-----------------|---|
| Two (2) | Chorus rooms located directly beneath stage with attached bath rooms and showers |
| One (1) | Orchestra dressing room located between the two chorus rooms |
| Two (2) | Star dressing rooms on second level off of stage left with bathrooms and showers. |
| Four (4) | Principal rooms on second floor located next to the Star dressing rooms with bathrooms and showers. |

ADDITIONAL ROOMS & COMMON AREAS

- One (1) Production room located off of stage left.
- Two (2) Quick change rooms located next to the Production room
- One (1) Green room located outside of Star dressing rooms on the second level.
There is a small kitchenette adjacent with a refrigerator, microwave & dishwasher.
- One (1) Rehearsal Studio (1,920 square feet) with sprung floor and acoustic/sound proofing treatment; located on second level, across from Green room.
- One (1) Common area outside of the lower level dressing rooms

*Access to second floor and lower level is by elevator or stairs.

WASHING MACHINES

Two (2) washers and Two (2) dryer with ironing boards & irons in lower level laundry room located next to the Chorus dressing rooms

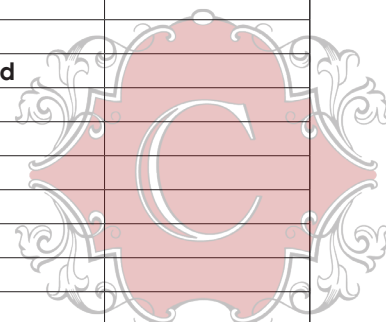
SOFT GOODS

Six (6) sets of legs and borders (soft goods are flat, NOT pleated.)

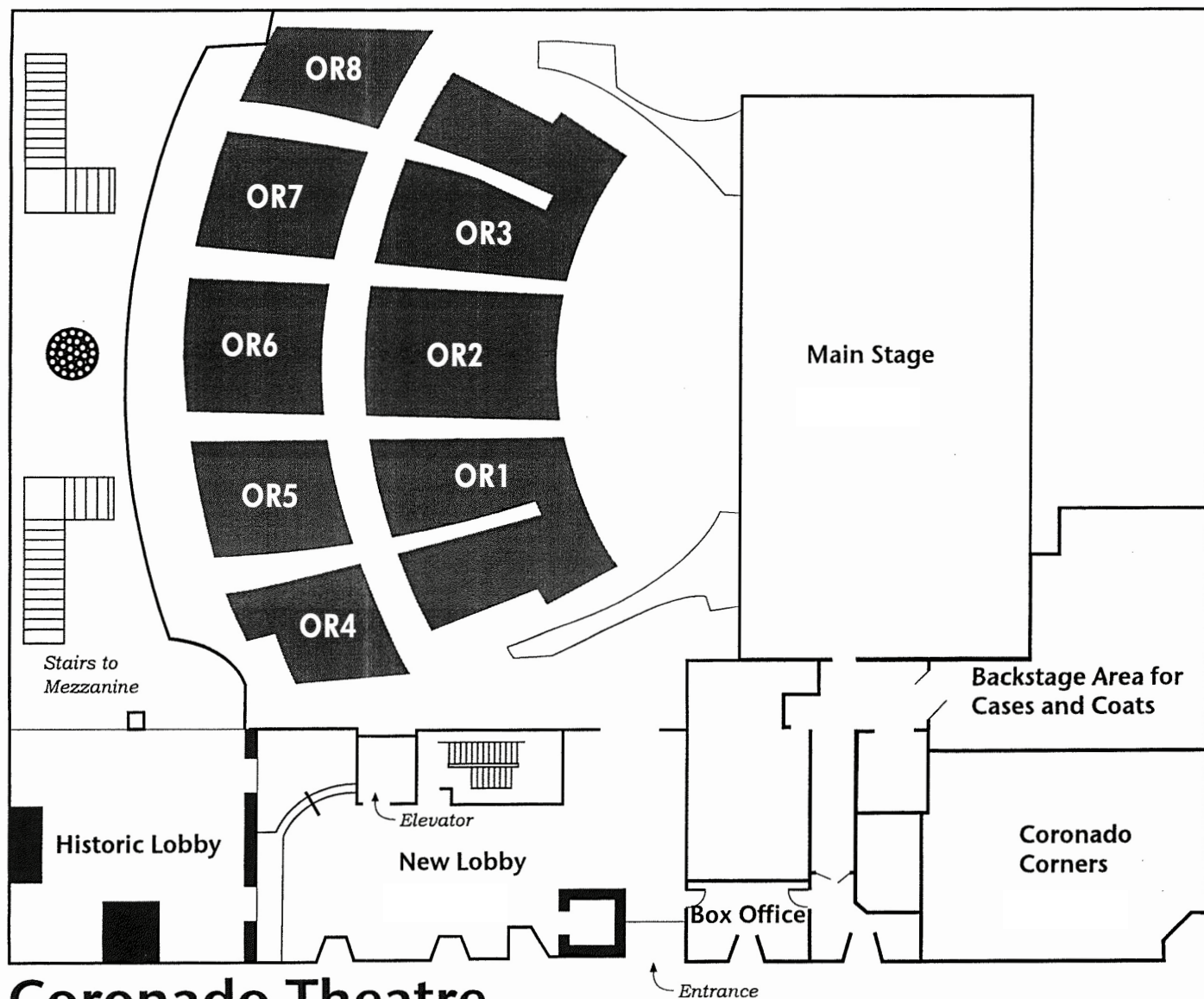
| | | |
|---------------------|------|------|
| Leg dimensions: | 32'H | 7'W |
| Border dimensions: | 15'H | 56'W |
| White Cyclorama: | 35'H | 60'W |
| Black Scrim: | 32'H | 56'W |
| Mid-stage Traveler: | 32'H | 56'W |
| Full Stage Black: | 32'H | 56'W |

LINE SET SCHEDULE - Coronado Performing Arts Center

| Pipe | Distance | House Use | Show Use | Notes | Weight |
|------|----------|---------------|----------|---------------|--------|
| | 1'3" | Grand Drape | | | |
| 1 | 2'2" | Border | | | |
| 2 | 2'10" | Legs | | | |
| 3 | 3'6" | 1st Electric | | non-dedicated | |
| 4 | 4'2" | | | | |
| 5 | 4'10" | | | | |
| 6 | 5'6" | | | | |
| 7 | 6'2" | | | | |
| 8 | 7'7" | Orch. Ceiling | | dedicated | |
| 9 | 9'5" | | | | |
| 10 | 10'1" | | | | |
| 11 | 10'9" | | | | |
| 12 | 11'5" | Border | | | |
| 13 | 12'1" | Legs | | | |
| 14 | 12'9" | 2nd Electric | | non-dedicated | |
| 15 | 13'5" | | | | |
| 16 | 14'1" | | | | |
| 17 | 14'9" | | | | |
| 18 | 15'5" | Strip lights | | non-dedicated | |
| 19 | 16'1" | | | | |
| 20 | 16'9" | | | | |
| 21 | 17'5" | | | | |
| 22 | 18'1" | Traveler | | dedicated | |
| 23 | 18'9" | | | | |
| 24 | 19'5" | | | | |
| 25 | 20'5" | Orch. Ceiling | | dedicated | |
| 26 | 21'5" | | | | |
| 27 | 23'5" | Border | | | |
| 28 | 24'1" | Legs | | | |
| 29 | 24'9" | 3rd Electric | | non-dedicated | |
| 30 | 25'5" | | | | |
| 31 | 26'1" | Black Scrim | | | |
| 32 | 26'9" | | | | |
| 33 | 27'5" | Strip Lights | | non-dedicated | |
| 34 | 28'1" | | | | |
| 35 | 28'9" | | | | |
| 36 | 30'5" | | | | |
| 37 | 31'1" | Border | | | |
| 38 | 31'9" | Legs | | | |
| 39 | 32'5" | 4th Electric | | non-dedicated | |
| 40 | 33'1" | | | | |
| 41 | 33'9" | | | | |
| 42 | 34'9" | Orch. Ceiling | | dedicated | |
| 43 | 35'9" | | | | |
| 44 | 36'5" | | | | |
| 45 | 38'5" | Strip Lights | | non-dedicated | |
| 46 | 39'1" | | | | |
| 47 | 39'9" | | | | |
| 48 | 40'5" | Border | | | |
| 49 | 41'1" | Legs | | | |
| 50 | 41'9" | | | | |
| 51 | 42'5" | White Cyc. | | | |
| 52 | 43'1" | | | | |

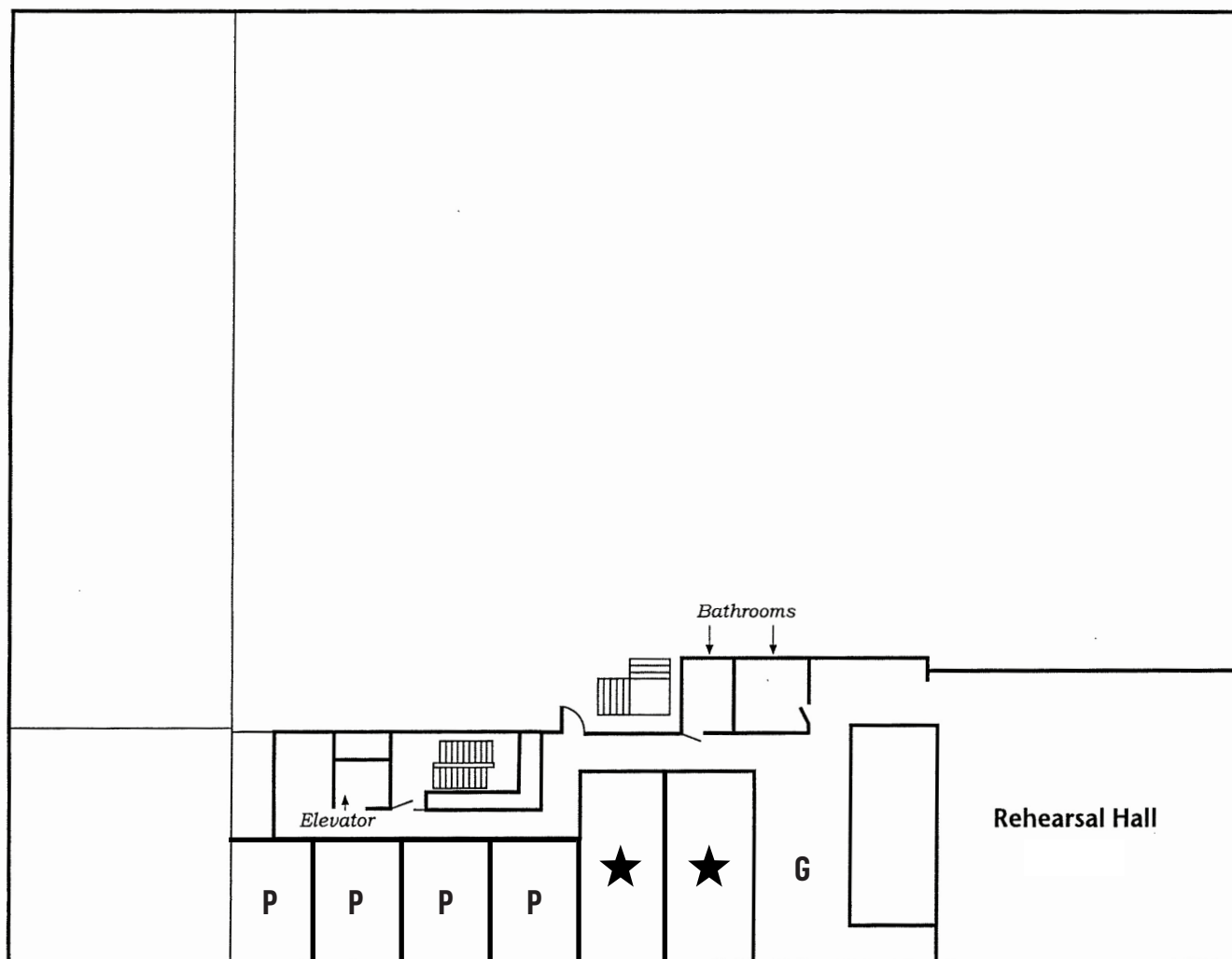


FLOOR PLAN - 1ST FLOOR



**Coronado Theatre
First Floor**

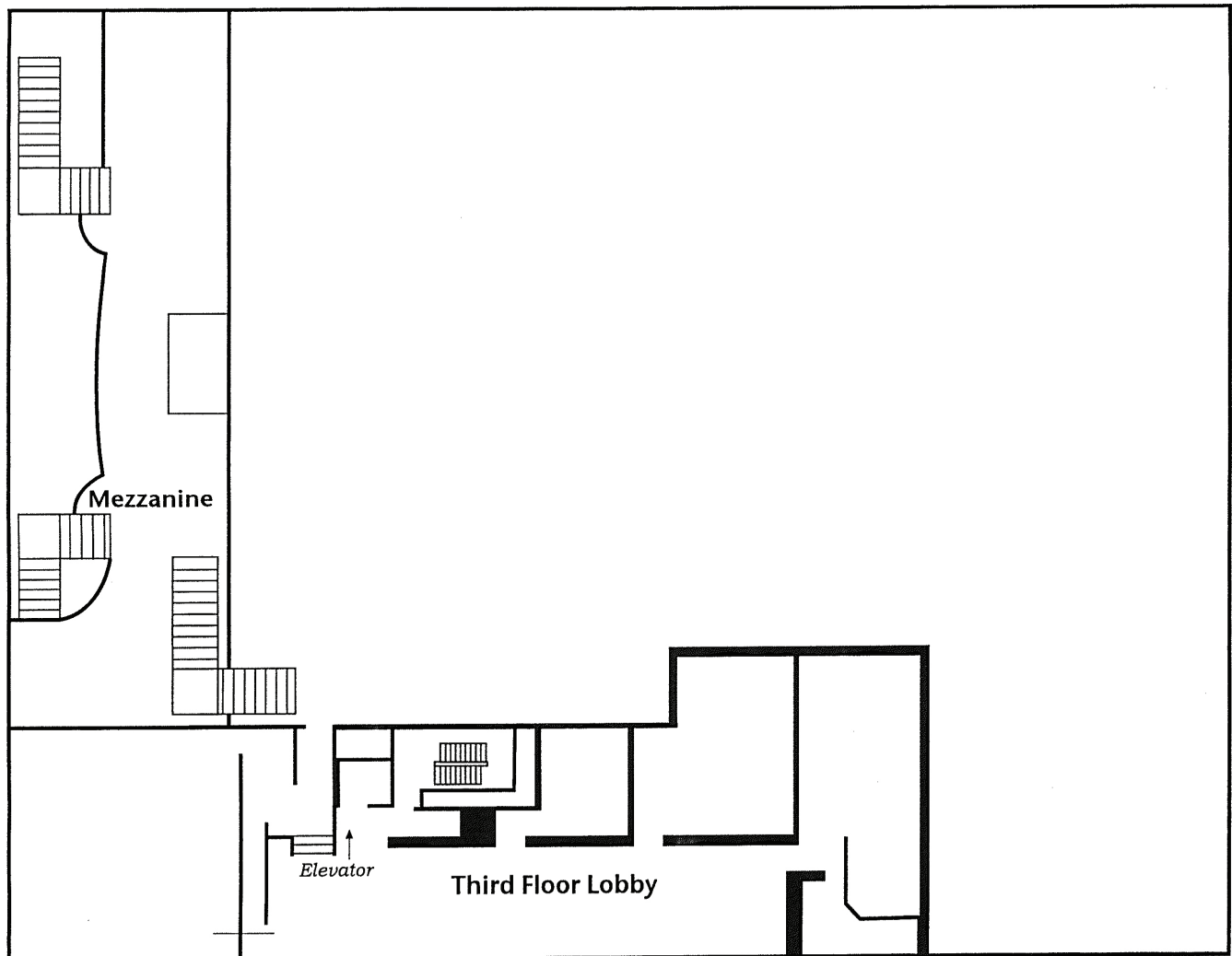
FLOOR PLAN - 2ND FLOOR



**Coronado Theatre
Second Floor**

- P** Principal Room
- ★** Star Dressing Room
- G** Green Room

FLOOR PLAN - MEZZANINE & THIRD FLOOR



Coronado Theatre
Mezzanine (2nd) and Third Floor