

SALISBURY-ROWAN COUNTY TOURISM DEVELOPMENT AUTHORITY SUBMITTAL FOR THE RAILWALK

Salisbury, NC 28144
September 14, 2023



SALISBURY-ROWAN COUNTY TOURISM DEVELOPMENT AUTHORITY

SUBMITTAL FOR THE RAILWALK

INDEX

AERIAL MAPS	1	(1-01 - 1-02)
EXISTING & PROPOSED RAILWALK PLANS	2	(2-01 - 2-03)
THE DESIGN VISION - BEFORE & AFTER	3	(3-01 - 3-17)
EXISTING & PROPOSED ELEVATIONS	4	(4-01 - 4-02)
MATERIAL LIST		
ANGLE SHADE LIGHTING	5	(5-01 - 5-02)
BENCHES WITH BACKS (EXISTING & ADDED)	6	(6-01 - 6-04)
BOLLARDS - DECORATIVE	7	(7-01 - 7-02)
BOLLARDS - LIGHTED	8	(8-01 - 8-02)
CANOPIES	9	
DECK RAILING	10	(10-01 - 10-03)
FENCE - VEGETATION SCREEN FRAME	11	(11-01 - 11-02)
FENCE - WOODEN SCREEN	12	
FESTOON LIGHTING	13	
GATEWAY ARCH WITH WOODEN SIGN	14	(14-01 - 14-02)
LITTER RECEPTACLES	15	(15-01 - 15-02)
SCONCE LIGHTING	16	
POLE LIGHTING WITH BANNER POLES	17	(17-01 - 17-02)

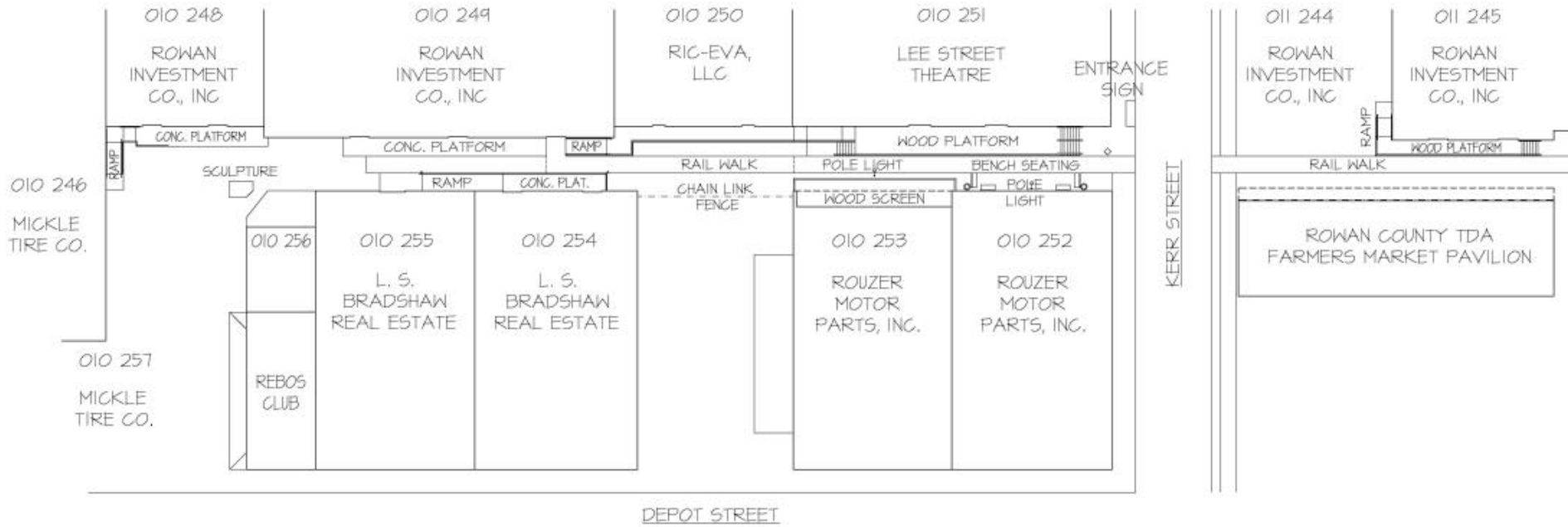
SALISBURY RAILWALK



SALISBURY RAILWALK



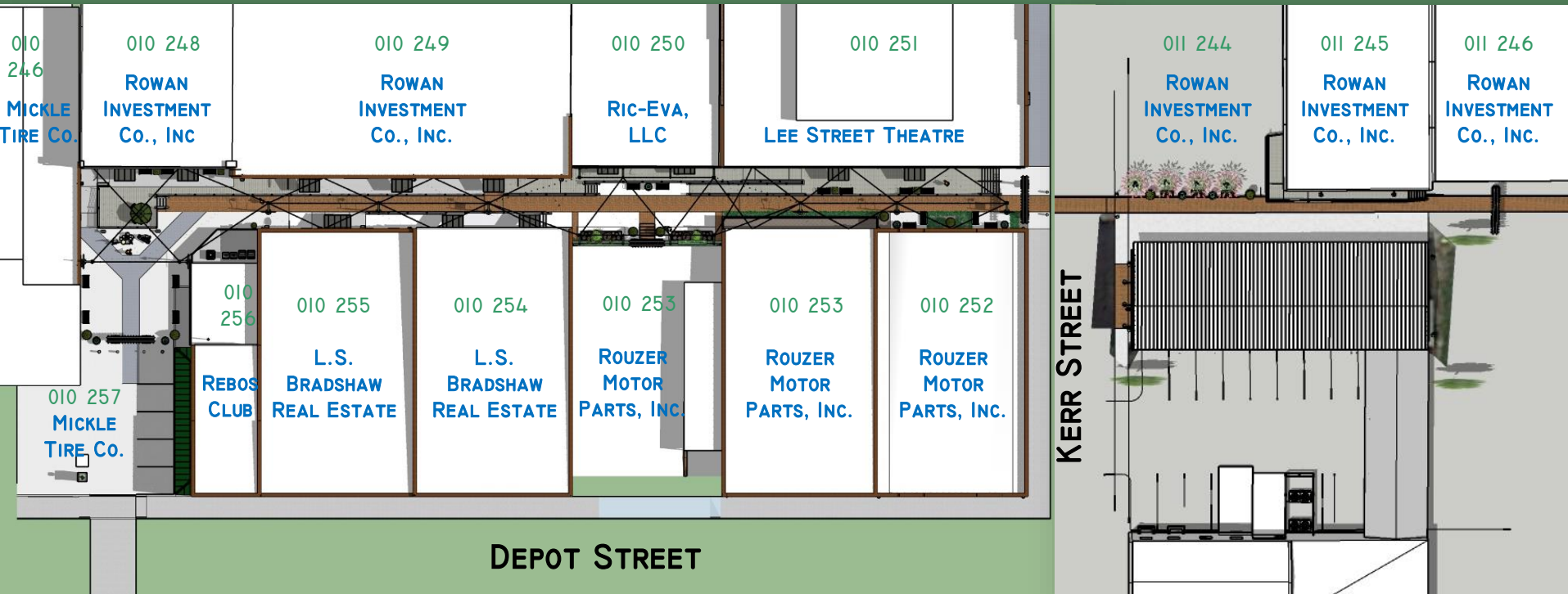
EXISTING RAILWALK PLAN



RAIL WALK

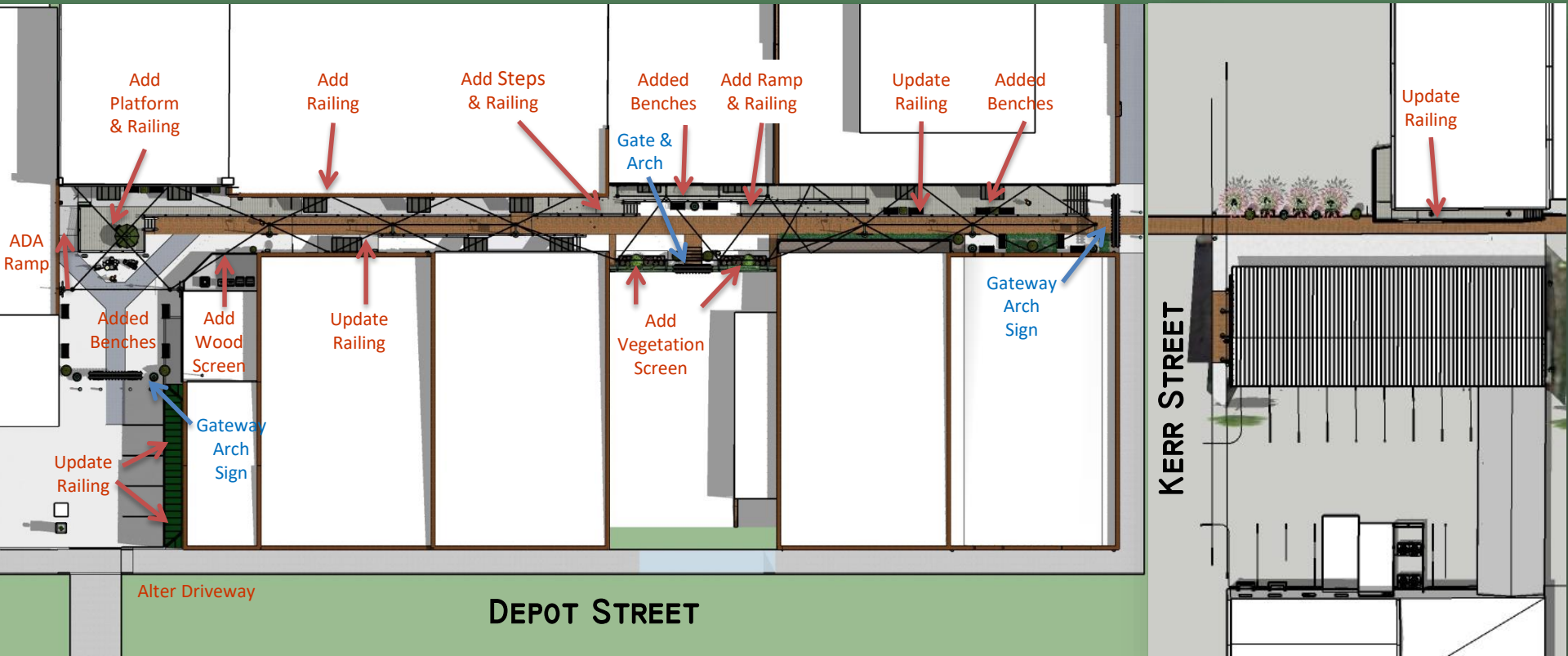
SCALE: 1/8" = 1'-0"

THE DESIGN VISION



PROPERTY OWNERS & PARCEL NUMBERS

THE DESIGN VISION



MEANS OF EGRESS & RAILINGS

RAILWALK ENTRANCE



BEFORE



AFTER

RAILWALK ENTRANCE



BEFORE



AFTER



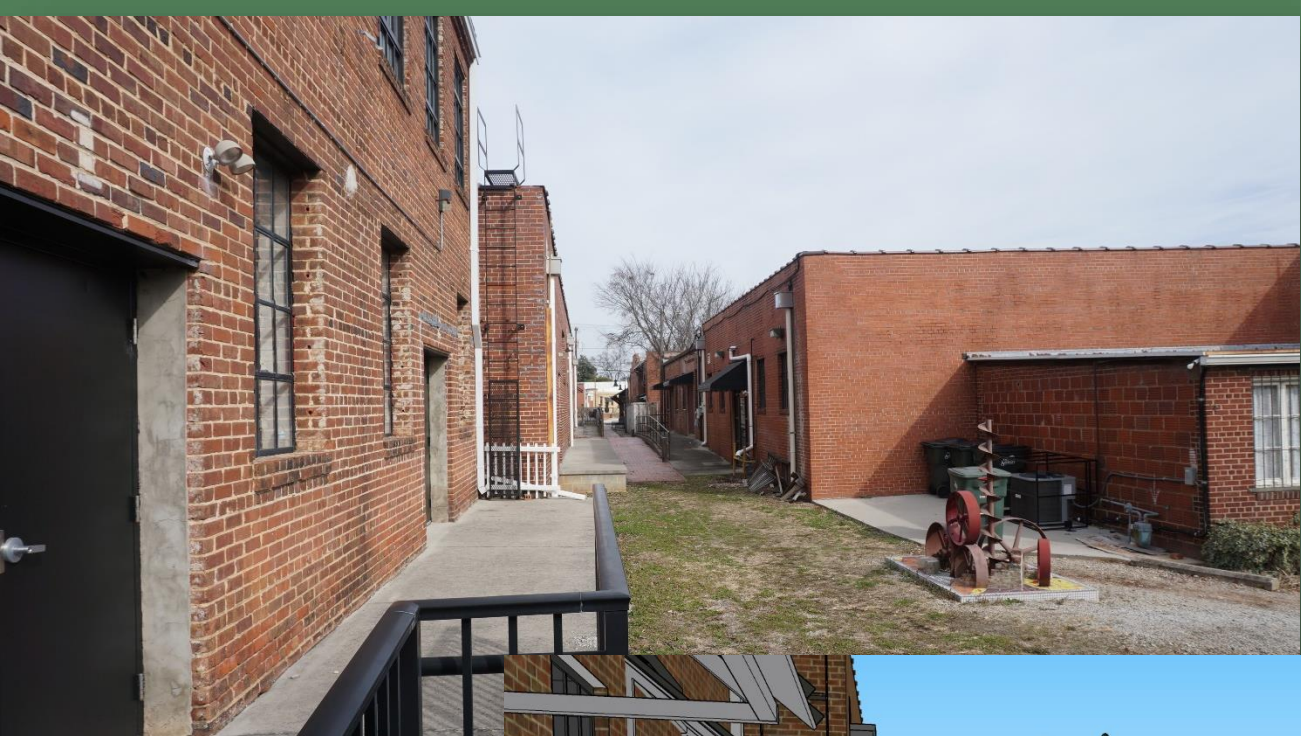
DEPOT VIEW

BEFORE



AFTER

ANCHOR VIEW

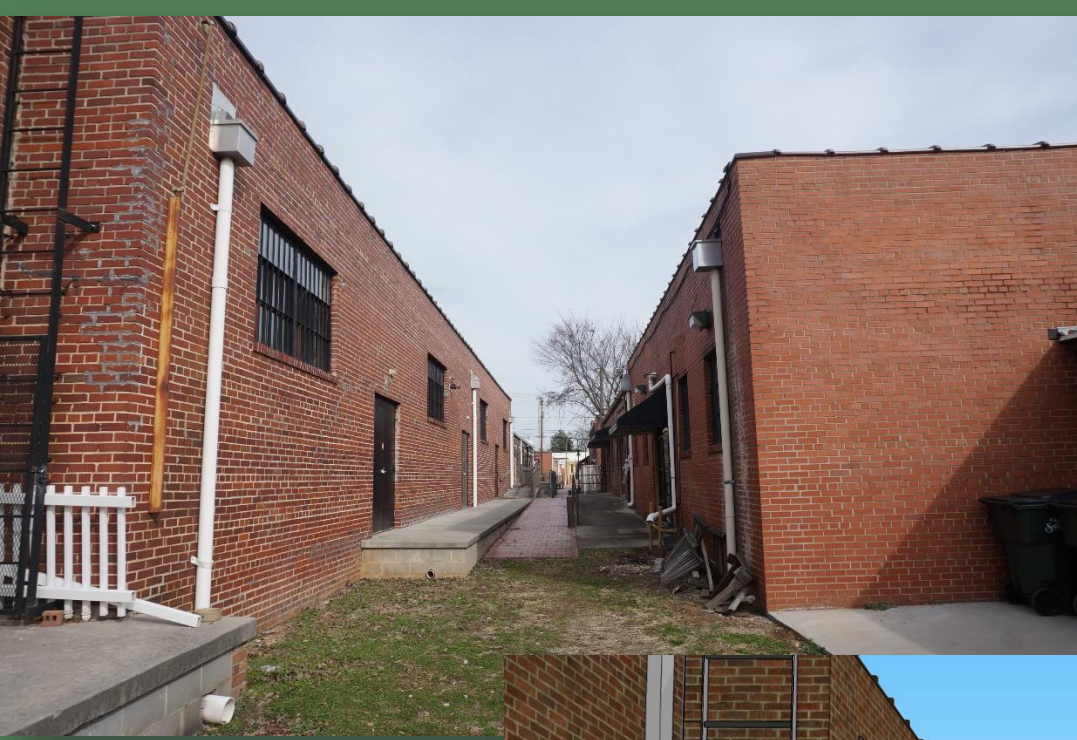


BEFORE

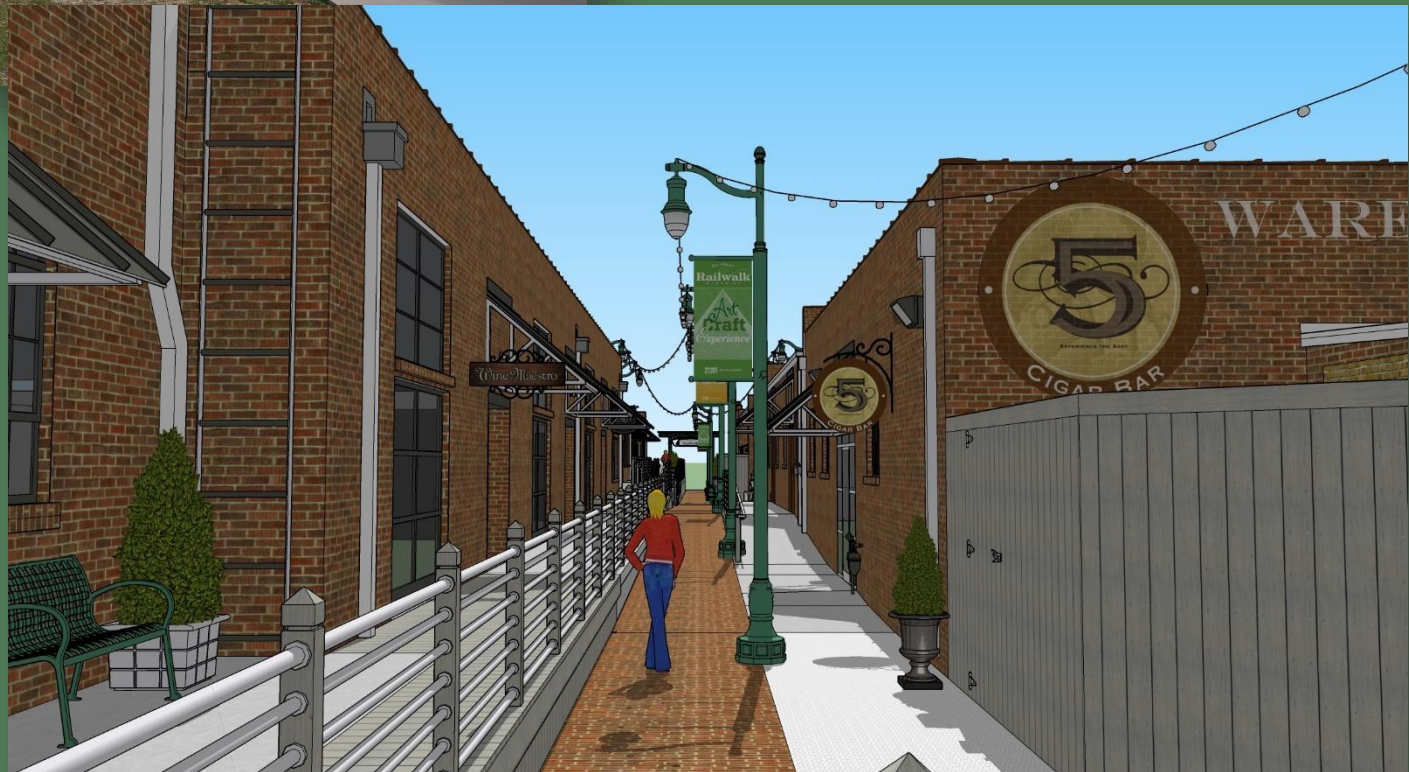


AFTER

WALK VIEW I



BEFORE



AFTER

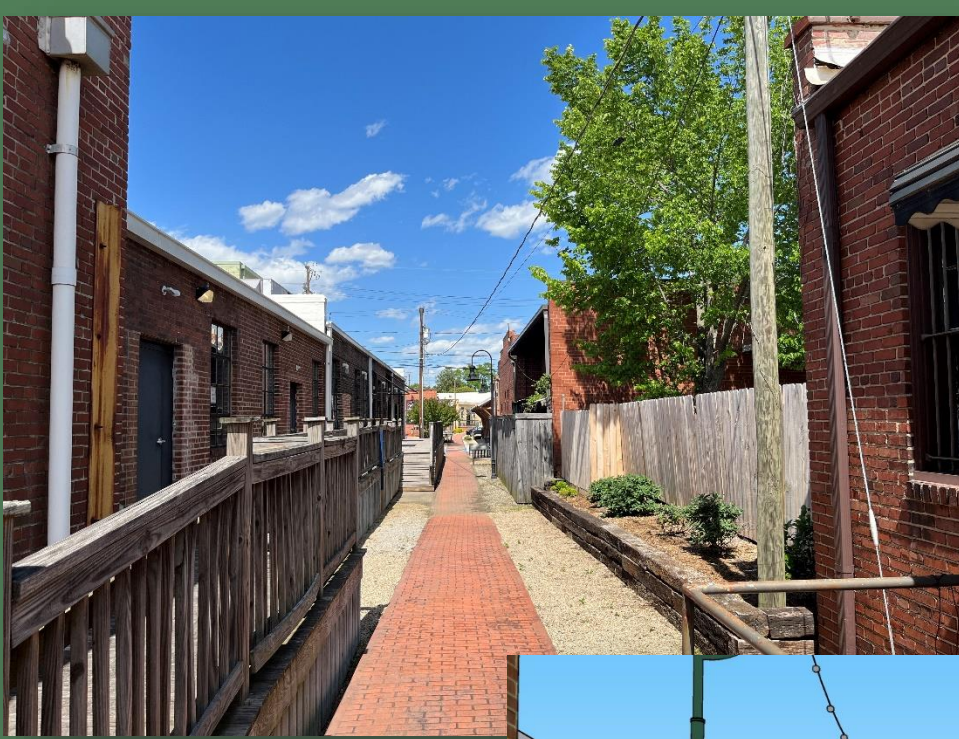
BEFORE

**WALK
VIEW 2**



AFTER

WALK VIEW 3



BEFORE



AFTER

CENTER PLANTING FEATURE VIEW

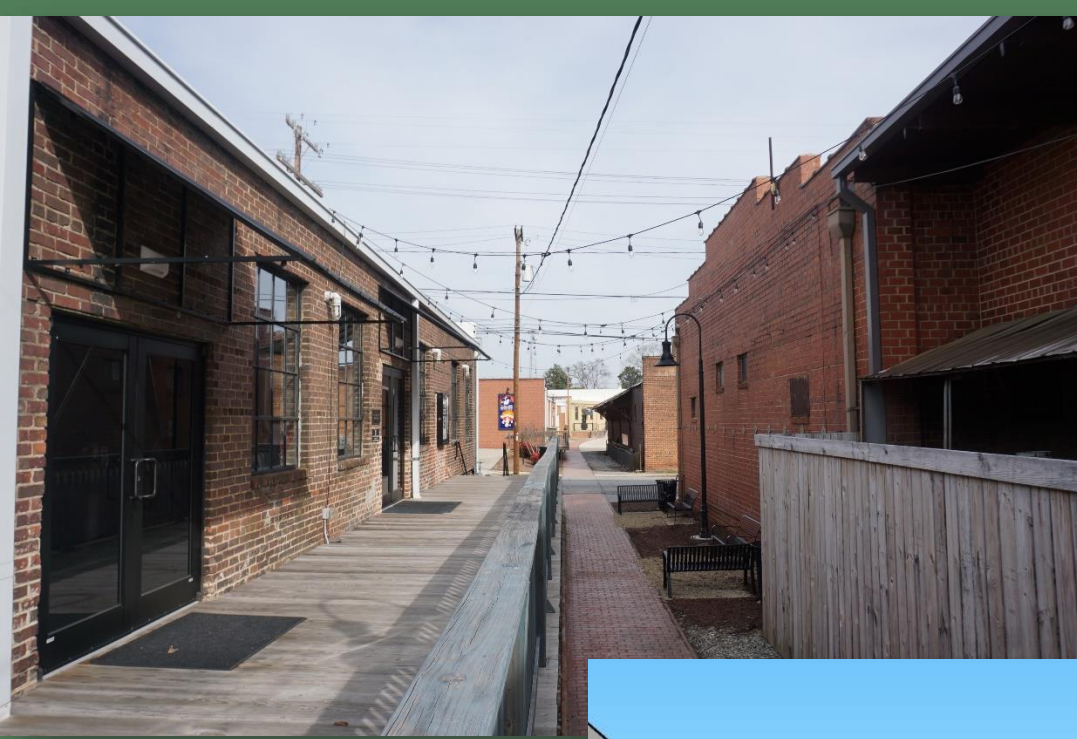


BEFORE



AFTER

WALK VIEW 4

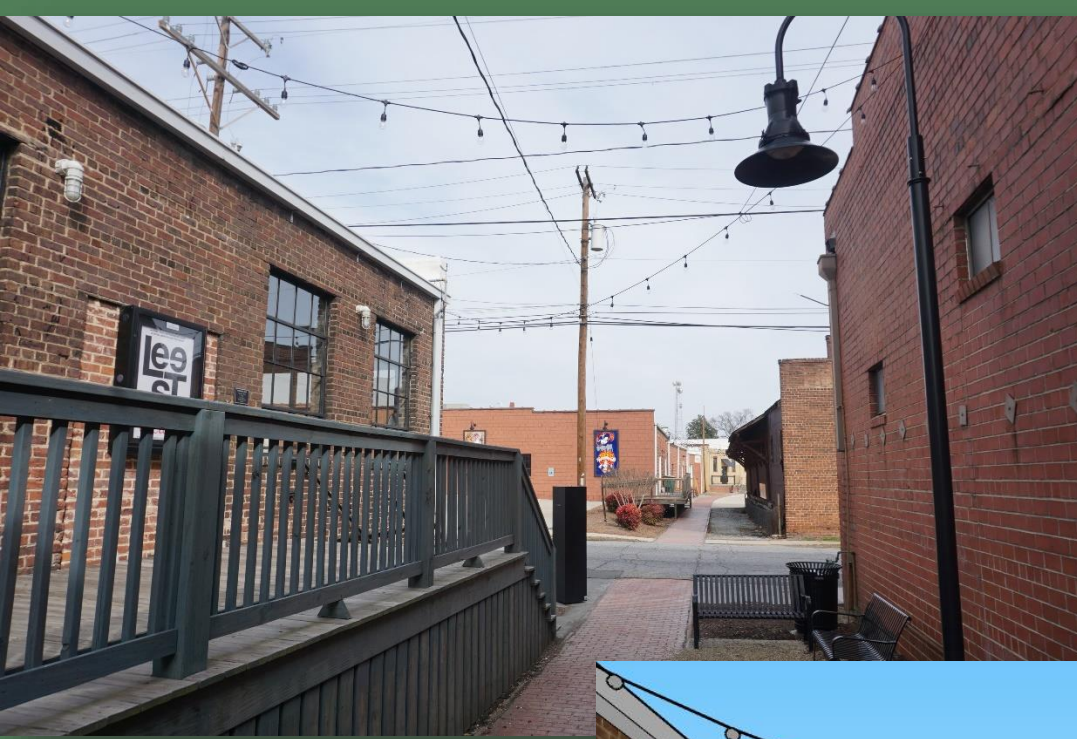


BEFORE



AFTER

WALK VIEW 5

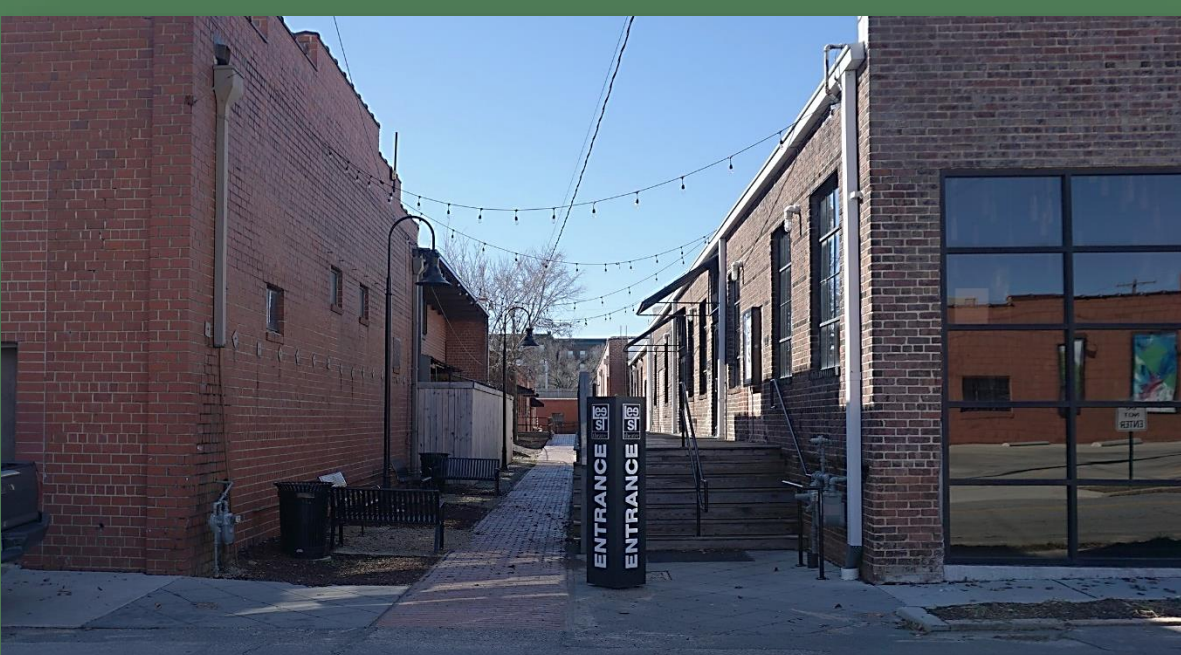


BEFORE



AFTER

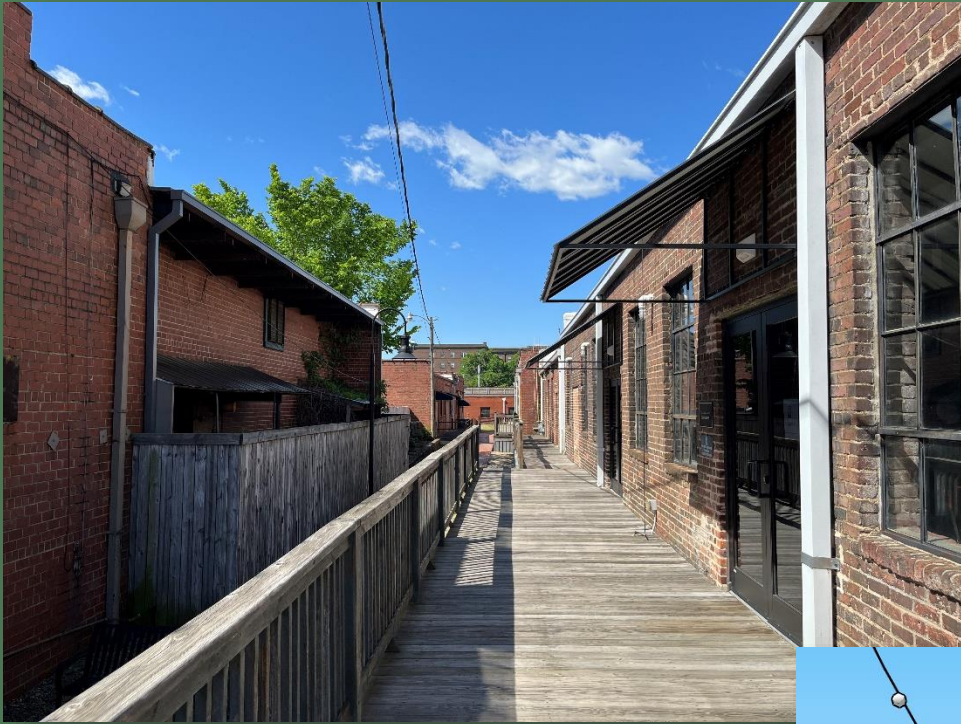
KERR STREET ENTRANCE



BEFORE



AFTER



BEFORE

**WALK
VIEW 1A**



AFTER

WALK VIEW 2A



BEFORE

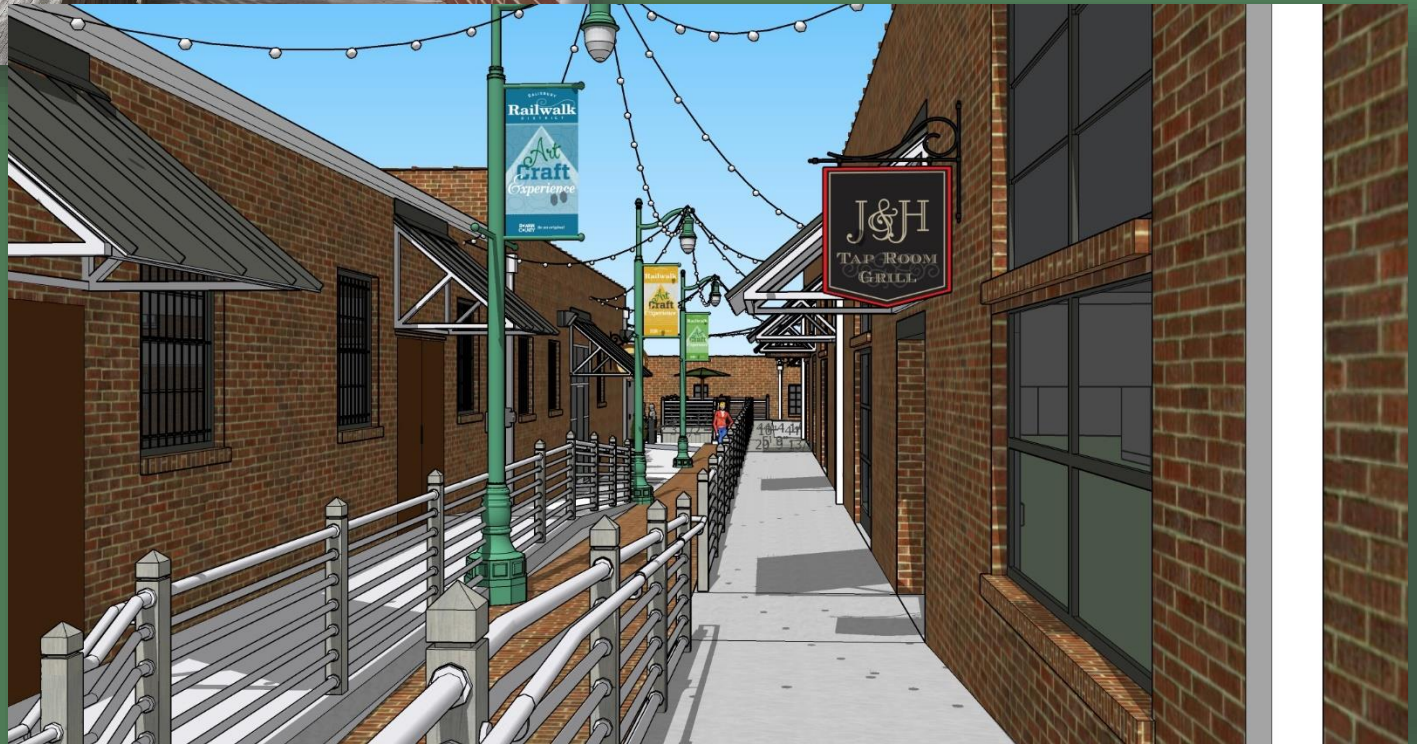


AFTER

WALK VIEW 3A



BEFORE



AFTER

WALK VIEW 4A

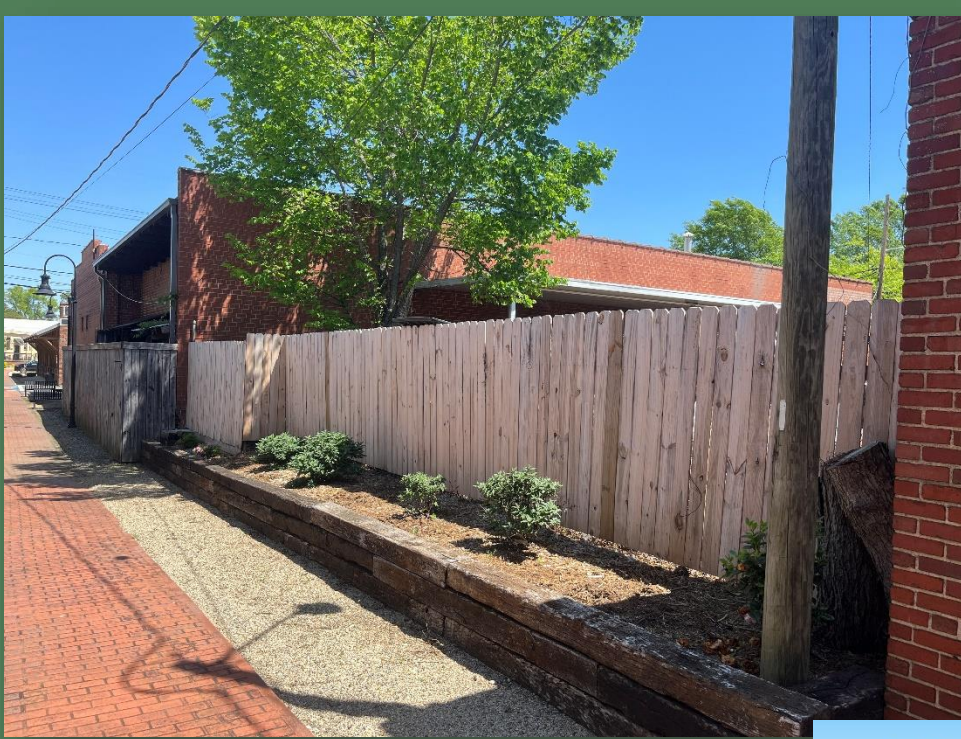


BEFORE



AFTER

PLANTING FEATURE VIEW



BEFORE



AFTER

PLANTING FEATURE ELEVATION

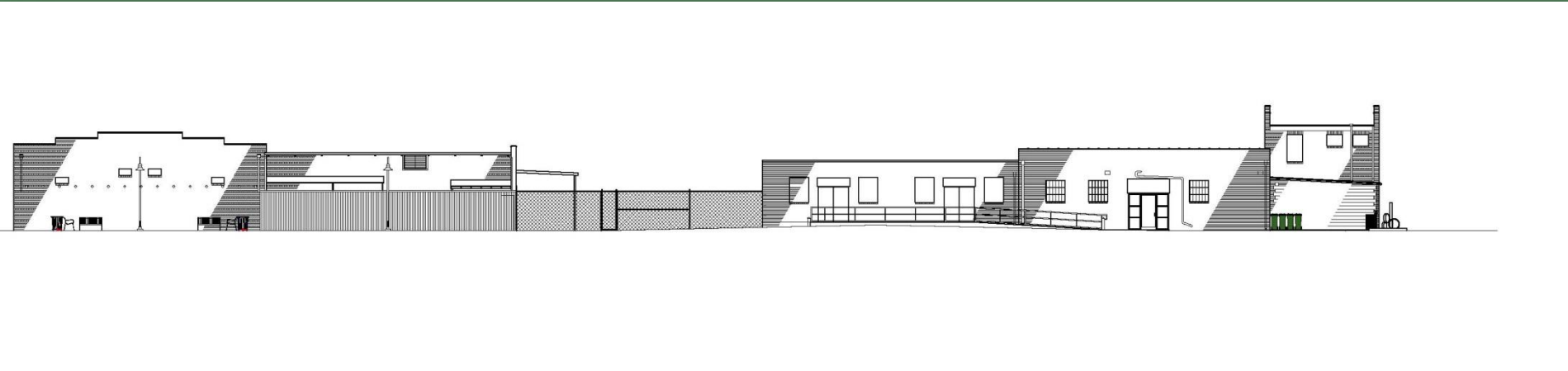


BEFORE

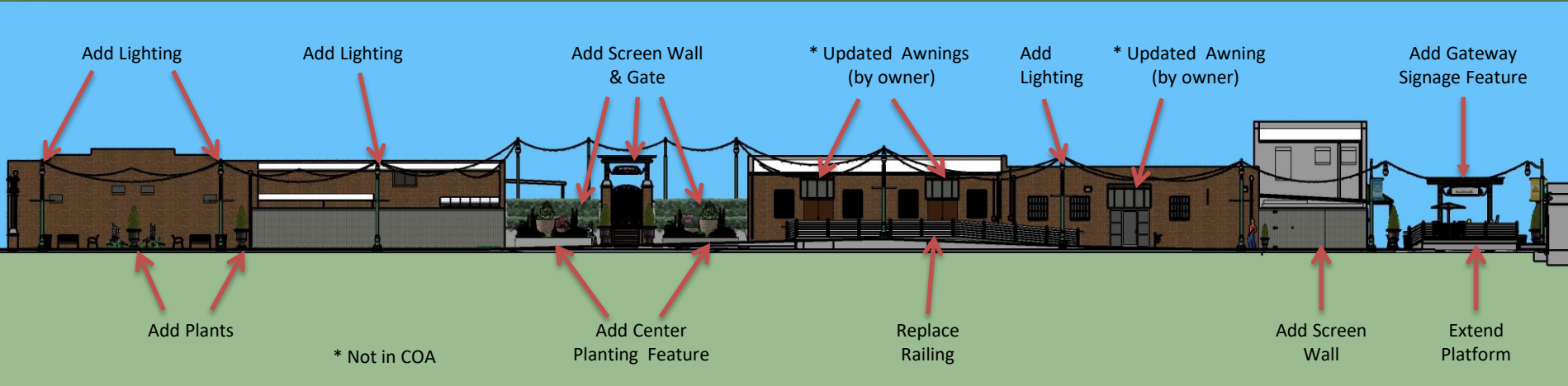


AFTER

EAST ELEVATION

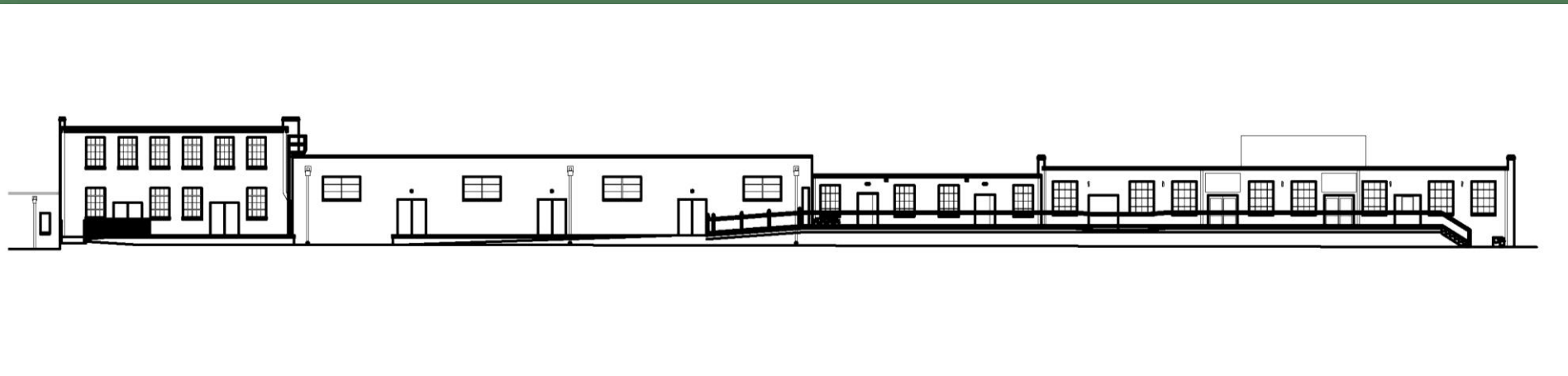


EXISTING VIEW

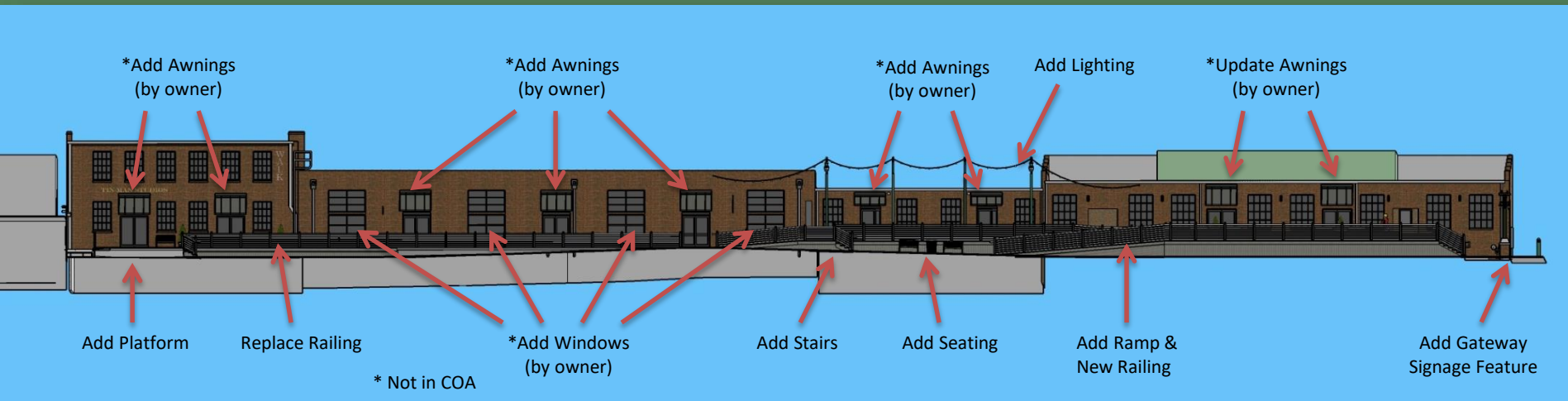


PROPOSED NEW VIEW

WEST ELEVATION



EXISTING VIEW



PROPOSED NEW VIEW

Angle Shade Collection

MATERIAL LIST

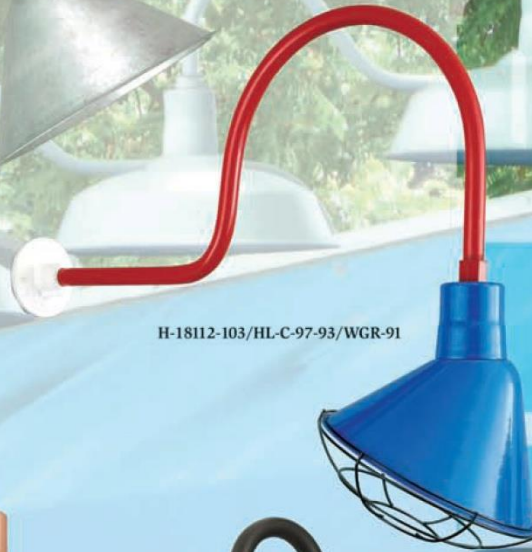
EXISTING ANGLE SHADE LIGHTING ON RAILWALK



H-18110-95/HL-K-95



H-18112-96/HL-H-96



H-18112-103/HL-C-97-93/WGR-91



H-18114-24/HL-H-24/DCC-24



H-18107-119/B-7-119

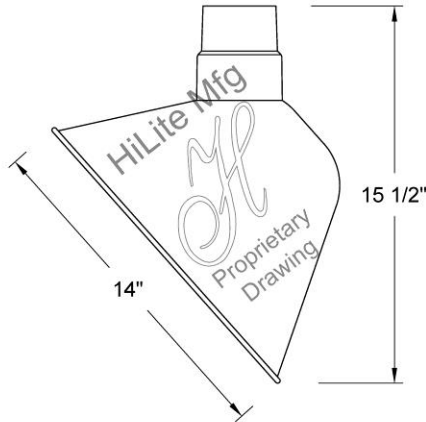


**HI-LITE MFG.
CO., INC**

13450 Monte Vista Avenue
Chino, California 91710
Telephone: (909) 465-1999
Toll Free: (800) 465-0211
Fax: (909) 465-0907
web: www.hilitemfg.com
e-mail: sales@hilitemfg.com

**H-18114
Angle Shade Collection**

Job Name: _____
Type: _____
Quantity: _____



FINISH -Multi-stage pretreatment procedure using materials of polyester/polished powder coat, baking enamel liquid, raw metals, and galvanized finishes.

Standard Finishes are: 91(Black), 93(White), 95(Dark Green), 96(Galvanized), BR47(Powder Coat Rust), BK01(Black Texture), GN20(Powder Coat Patina).

Upgraded Finishes are: 29, 66, 82, 90, 92, 94, 97, 99, 100, 103, 104, 105, 110, 112, 113, 114, 115, 117, 118, 119, 120, 127, 128, 129, 133, 134, 135, 136, 98, 101, 102, 137, 138, 139, 140, 121, 122, 123, 124, 125, 126, 11, 01, 22, 25, 33, 77, 89, 24, 44, 48, 49, 15, 16.

(Custom finishes available).

For interior finish of fixture refer to color chart on pages 344-348.

MOUNTING - Stem, Arm, and Flush mounting available.

ACCESSORIES - CGU(Cast Guard and Glass), LCGU(Large Cast Guard and Glass), WGU(Wire Guard and Glass), LWGU(Large Wire Guard and Glass), ARN(Acorn Globe), LARN(Large Acorn Globe), WGR(Wire Guard) and SK(Swivel Knuckle) available.

REFLECTOR - Heavy duty, spun shade, aluminum 6061-0 and/or 1100-0, galvanized 22 gauge, steel 20/22 gauge, copper 032/040 and brass 032/040 construction. Dependant on finish.

SOCKETS/LAMPS - Available in:

Incandescent

- rated 200 watt max/120 volt, medium base.

Compact Fluorescent(CFL)

- rated 13/18/26/32/42/57 watt max/120/277 volt, GX24Q base.

Metal Halide(MH)

- rated 35/50/70/100/150/175 watt max/120/208/240/277 volt, medium base, 4KV socket.

High Pressure Sodium(HPS)

- rated 50/70/100/150 watt max/120/277 volt, medium base.

Light-Emitted Diode(LED)

-See LED specification sheet.

EXISTING ANGLE SHADE LIGHTING ON RAILWALK

MADE IN THE U.S.A.

Suitable for wet location.





EXISTING BENCHES ON RAILWALK

The **PULLMAN BENCH WITH BACK** is a popular, classic choice for any setting. The workhorse of commercial benches, this versatile series delivers the required stability needed for any project and an appearance that blends with varied decors.



P26



STANDARD FEATURES

- Color: exclusive KEYSHIELD® polyester powder coating finish
- Support: bolt down or freestanding
- Fully assembled unit
- Continuous weld seams
- Three-year warranty
- Made in the USA



CUSTOM OPTIONS

- Color: custom KEYSHIELD® powder coat
- Support: bury extension
- Materials: sustainable hardwood, stainless steel, recycled plastic
- Arms: center arms, additional arms, no arms
- Curves, reverse curves, angles
- Custom length



ENHANCEMENTS

- Inquire about coordinating litter receptacles, ash urns, planters, tables and other furnishings
- Cushions
- Pillows
- Cast bronze plaques
- Laser cuts
- Decals
- Designs in Time quick ship option



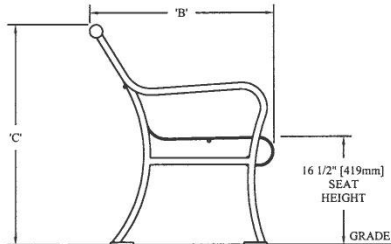
PULLMAN BENCH WITH BACK

All Pullman pieces are Exclusive By Design™.

KEYSHIELD® METAL FINISH

The trademarked KEYSHIELD® finish protects each piece of furniture from chipping, cracking, and UVA damage while providing unparalleled corrosion resistance. Steel products are finished with a two-coat powder coating process applied to a 7-15 mil thickness. Substrate preparation includes sandblasting to a white finish to remove all surface contaminants. The raw product then receives a corrosion-inhibiting phosphate coating prior to the application of the powder coating. The first coat applied to the substrate is zinc rich epoxy powder primer used exclusively on sandblasted parts. The second coat is a colored polyester powder coating. Both coats are electrostatically applied and oven cured according to powder coating manufacturing specifications to create a smooth, satin-like finish and a low-emitting non-porous armor.

	P24	P26	P28
	4ft	6ft	8ft
LENGTH (A)	48 1/2"	73 1/2"	93 1/2"
WIDTH (B)	28"	28"	28"
HEIGHT (C)	33 1/2"	33 1/2"	33 1/2"
SEAT HEIGHT	16 1/2"	16 1/2"	16 1/2"
WEIGHT	143 lbs.	220 lbs.	255 lbs.

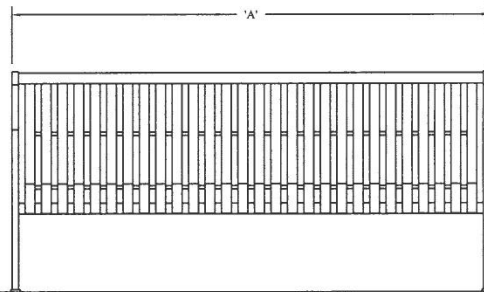
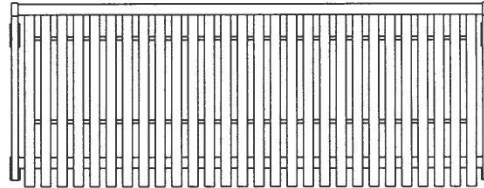


FULLY ASSEMBLED UNIT

The Pullman bench with back is manufactured in the USA as a fully assembled unit to provide ultimate stability and avoid damage during transit to the site, saving time and money.

MATERIALS

Commercial-grade materials, at least 25% recycled raw steel, 100% recyclable steel; completely welded for optimum strength and stability according to Keystone Ridge Designs, Inc. CAD drawing; vertical 3/16" x 1-1/2" steel straps evenly spaced 1" apart attached to 1-1/2" O.D. steel tubing ergonomic center frame with back; 1/2" O.D. steel tubing support bars connect seat and back straps to ensure structural integrity; mounted on 1" square solid legs.



EXISTING BENCHES ON RAILWALK

PROPRIETARY STATEMENT

Keystone Ridge Designs, Inc.® is proud to offer the design community exceptional site amenities. Due to the time and resources invested in designing, manufacturing and marketing Keystone Ridge Designs' products and services,

we pursue design patents, copyrights, trademarks and service marks whenever possible. Any unlawful duplication or misrepresentation of Keystone Ridge Designs' products will be rigorously protected.





PULLMAN

ADDED BENCHES W/ CENTER ARM AT RAILWALK

The **PULLMAN BENCH WITH BACK AND CENTER ARM** is a popular, classic choice for any setting. The workhorse of commercial benches, this versatile series delivers the required stability needed for any project and an appearance that blends with varied decors.



P26CA



STANDARD FEATURES

- Color: exclusive KEYSHIELD® polyester powder coating finish
- Support: bolt down or freestanding
- Fully assembled unit
- Continuous weld seams
- Three-year warranty
- Made in the USA



CUSTOM OPTIONS

- Color: custom KEYSHIELD® powder coat
- Support: bury extension
- Materials: sustainable hardwood, stainless steel, recycled plastic
- Arms: center arms, additional arms, no arms
- Curves, reverse curves, angles
- Custom length



ENHANCEMENTS

- Inquire about coordinating litter receptacles, ash urns, planters, tables and other furnishings
- Pillows
- Cast bronze plaques
- Laser cuts
- Decals





PULLMAN

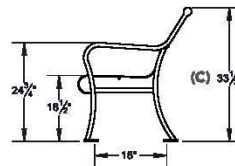
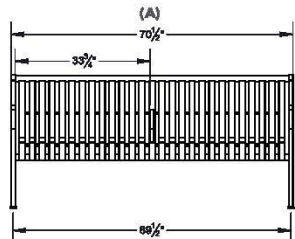
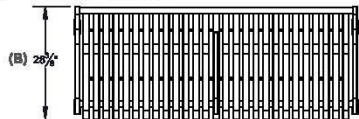
PULLMAN BENCH WITH BACK AND CENTER ARM

All Pullman pieces are Exclusive By Design™.

KEYSHIELD® METAL FINISH

The trademarked KEYSHIELD® finish protects each piece of furniture from chipping, cracking, and UVA damage while providing unparalleled corrosion resistance. Steel products are finished with a two-coat powder coating process applied to a 7-15 mil thickness. Substrate preparation includes sandblasting to a white finish to remove all surface contaminants. The raw product then receives a corrosion-inhibiting phosphate coating prior to the application of the powder coating. The first coat applied to the substrate is zinc rich epoxy powder primer used exclusively on sandblasted parts. The second coat is a colored polyester powder coating. Both coats are electrostatically applied and oven cured according to powder coating manufacturing specifications to create a smooth, satin-like finish and a low-emitting non-porous armor.

	P24CA	P26CA	P28CA
LENGTH (A)	48 1/2"	70 1/2"	90 1/2"
WIDTH (B)	28 3/8"	28 3/8"	28 3/8"
HEIGHT (C)	33 1/2"	33 1/2"	33 1/2"
SEAT HEIGHT	16 1/2"	16 1/2"	16 1/2"
WEIGHT	220 lbs.	260 lbs.	295 lbs.



FULLY ASSEMBLED UNIT

The Pullman bench with back and center arm is manufactured in the USA as a fully assembled unit to provide ultimate stability and avoid damage during transit to the site, saving time and money.

MATERIALS

Commercial-grade materials, at least 25% recycled raw steel, 100% recyclable steel; completely welded for optimum strength and stability according to Keystone Ridge Designs, Inc. CAD drawing; vertical 3/16" x 1-1/2" steel straps evenly spaced 1" apart attached to 1-1/2" O.D. steel tubing ergonomic center frame with back; 1/2" O.D. steel tubing support bars connect seat and back straps to ensure structural integrity; mounted on 1" square solid legs.

ADDED BENCHES W/ CENTER ARM AT RAILWALK

PROPRIETARY STATEMENT

Keystone Ridge Designs, Inc.® is proud to offer the design community exceptional site amenities. Due to the time and resources invested in designing, manufacturing and marketing Keystone Ridge Designs' products and services,

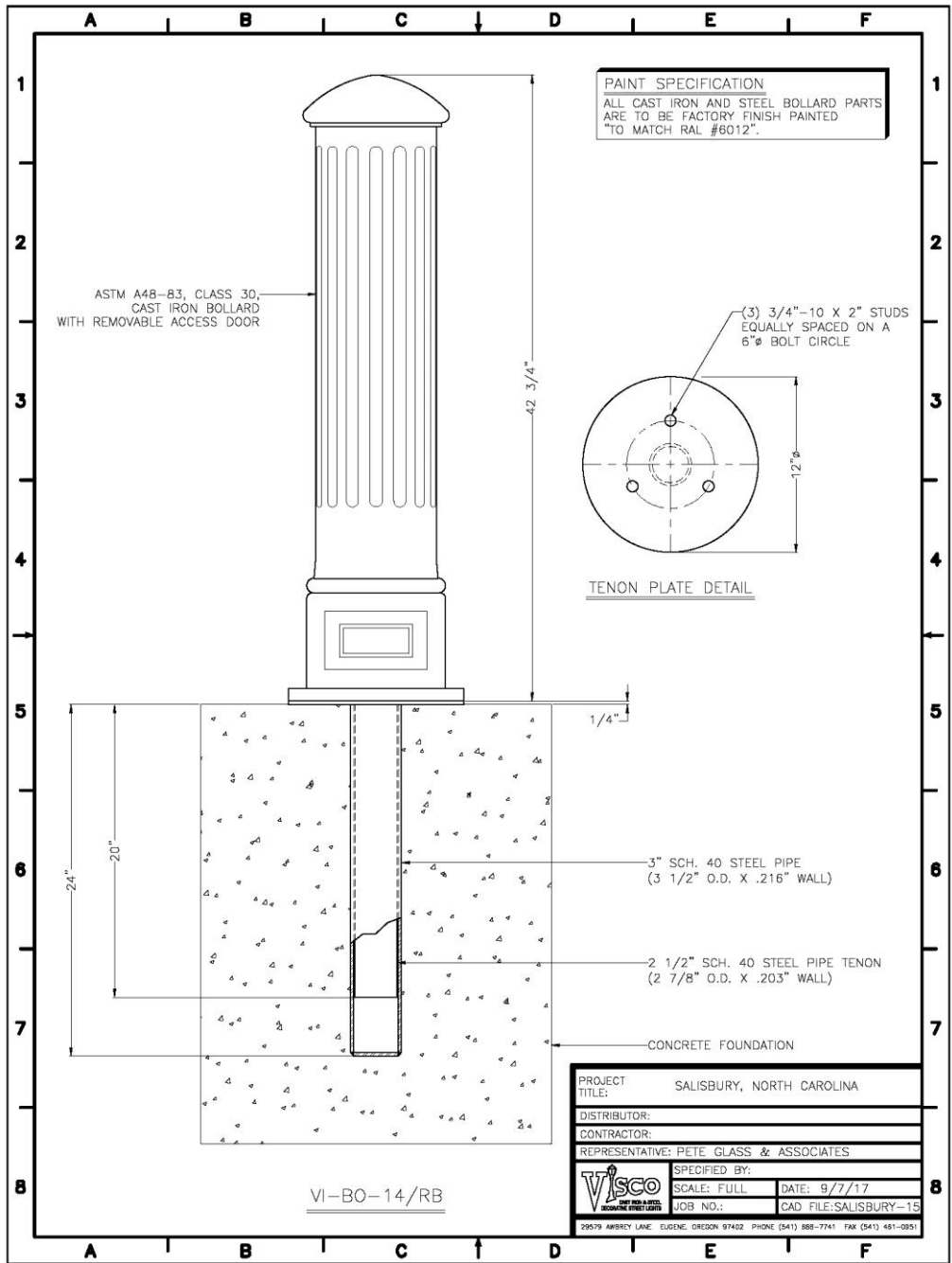
we pursue design patents, copyrights, trademarks and service marks whenever possible. Any unlawful duplication or misrepresentation of Keystone Ridge Designs' products will be rigorously protected.



**N. LEE ST.
100 BLOCK**



**PROPOSED
DECORATIVE
BOLLARD**



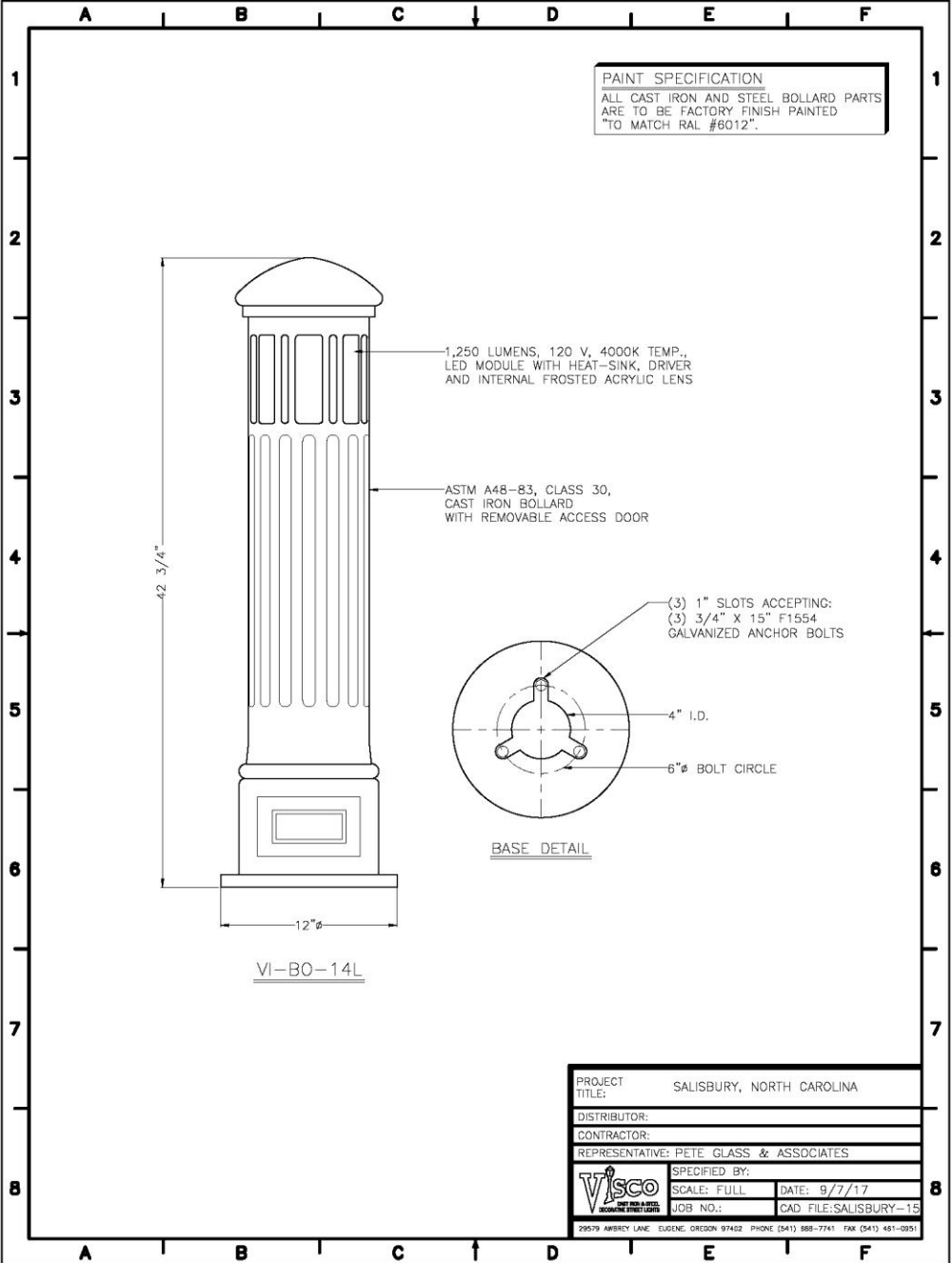
PROPOSED DECORATIVE BOLLARD

**N. LEE ST.
300 BLOCK**



**PROPOSED
LIGHTED
BOLLARD**

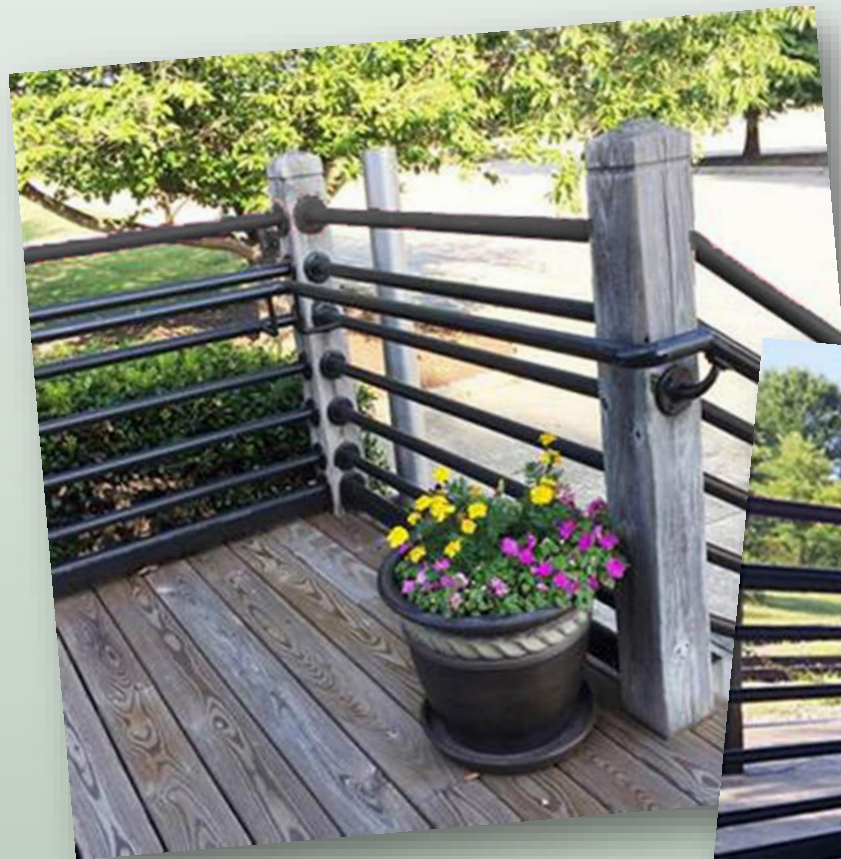
PROPOSED LIGHTED BOLLARD



EXISTING CANOPIES ON RAILWALK

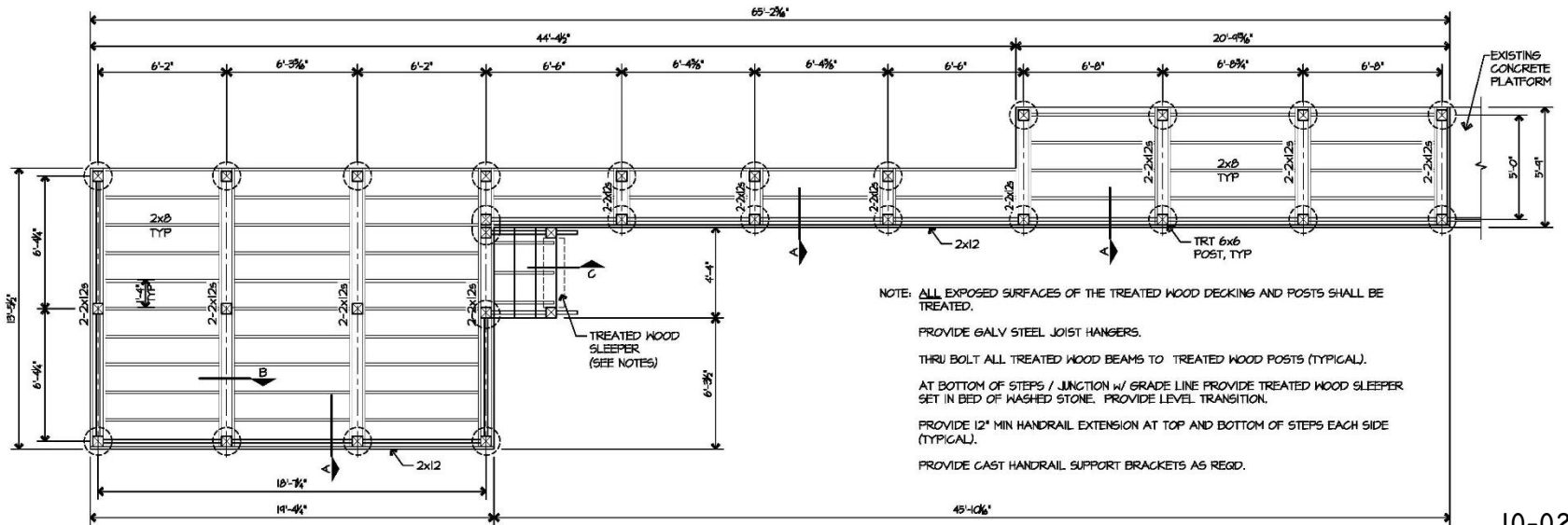


PROPOSED GUARDRAIL & HANDRAIL



**NORTH CAROLINA
TRANSPORTATION MUSEUM**

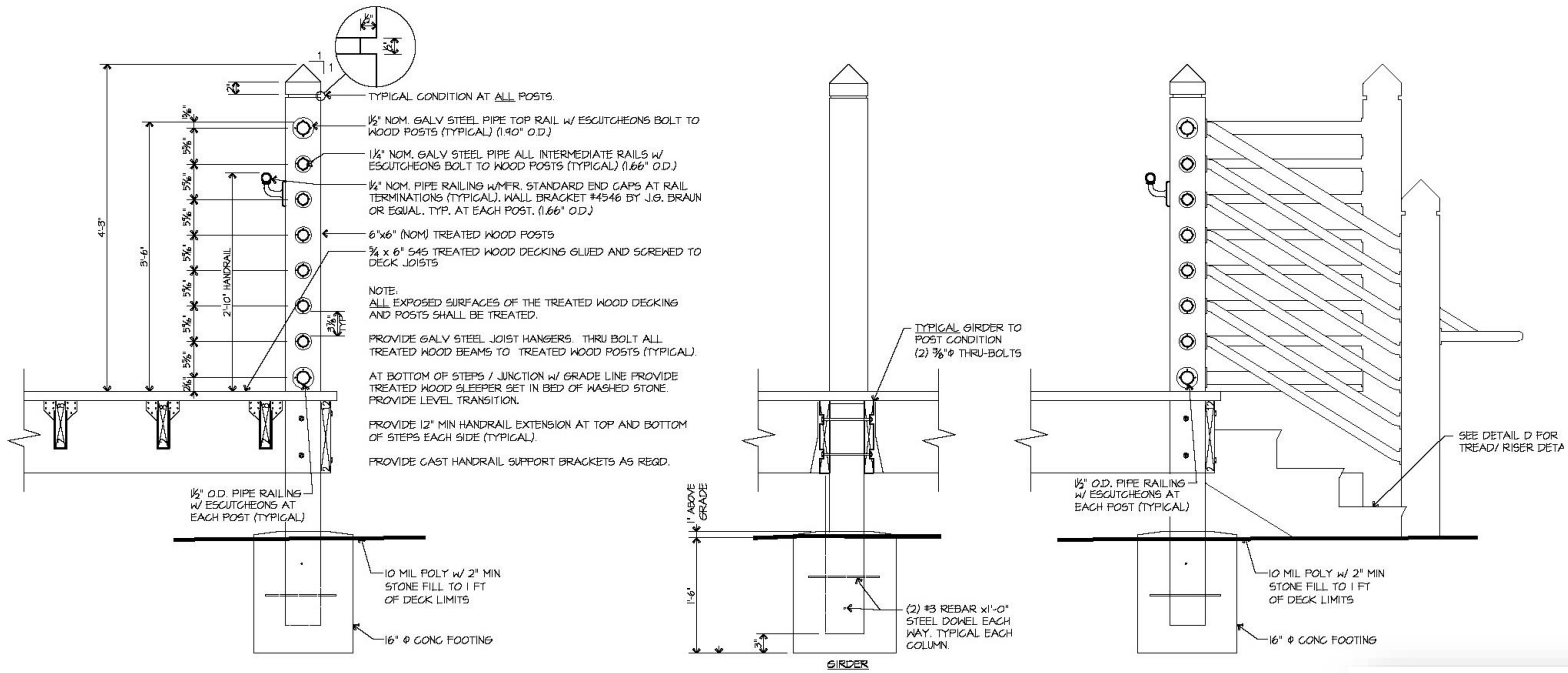
PROPOSED GUARDRAIL & HANDRAIL



10-02

PLAN VIEWS

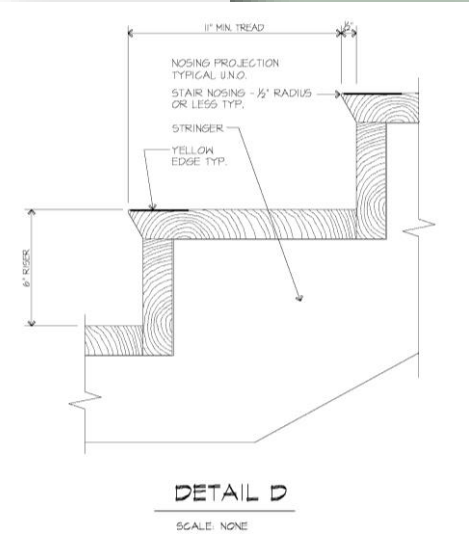
PROPOSED GUARDRAIL & HANDRAIL



TYPICAL
SECTION A
SCALE: NONE

TYPICAL
SECTION B
SCALE: NONE

TYPICAL
SECTION C
SCALE: NONE



SECTIONS AND DETAIL

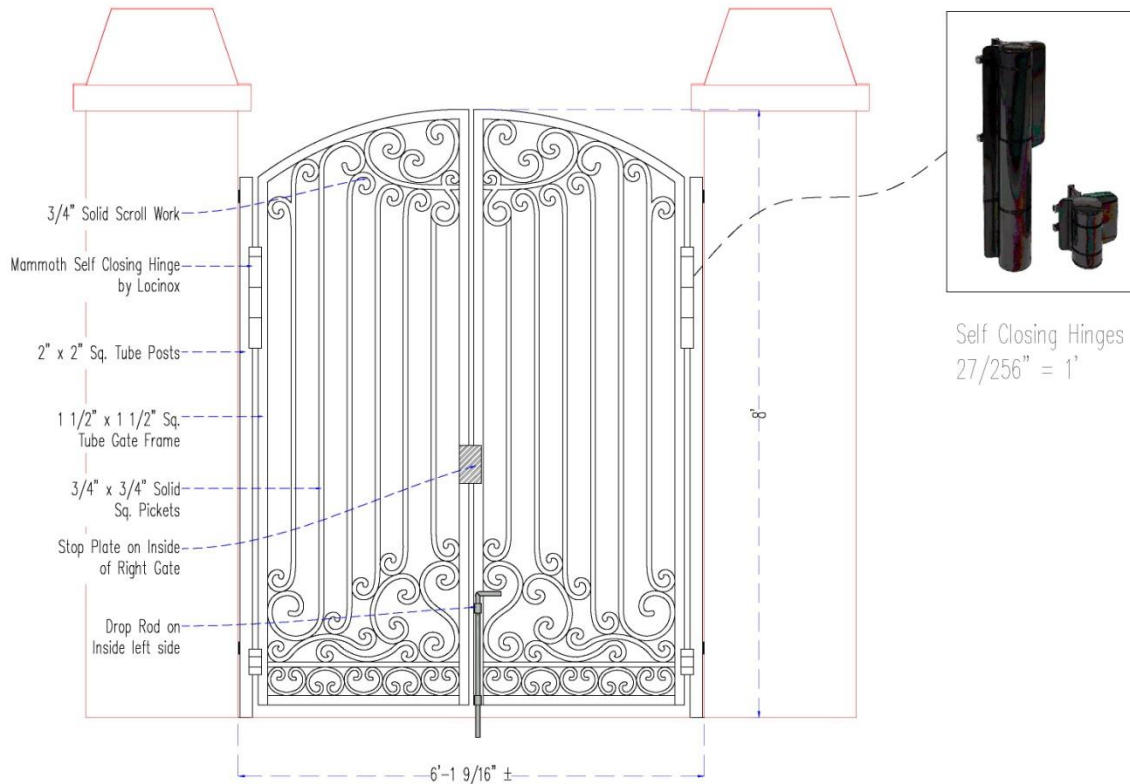
FENCE VEGETATION SCREEN SUPPORT



**FENCE CONSTRUCTION:
STEEL TRELLISES
SUPPORTED BY STEEL
POSTS ANCHORED INTO
CONCRETE KNEE WALL**

VEGETATION SCREEN GATE

Custom Aluminum Walk Gate



Walk Gate
1" = 1'

	Project Name and Address	Revision	Date
	RAMSAY BURGIN SMITH ARCH	Preliminary	01

II-02

DWG. Date 2/20/18

**FENCE –
ADDED WOODEN SCREEN @
CORNER TO MATCH EXISTING
RAILWALK SCREEN**



**FENCE CONSTRUCTION:
PRESSURE-TREATED
WOOD FENCE PICKETS
SUPPORTED BY 2X4 &
4X4 FRAMING**

Specifications

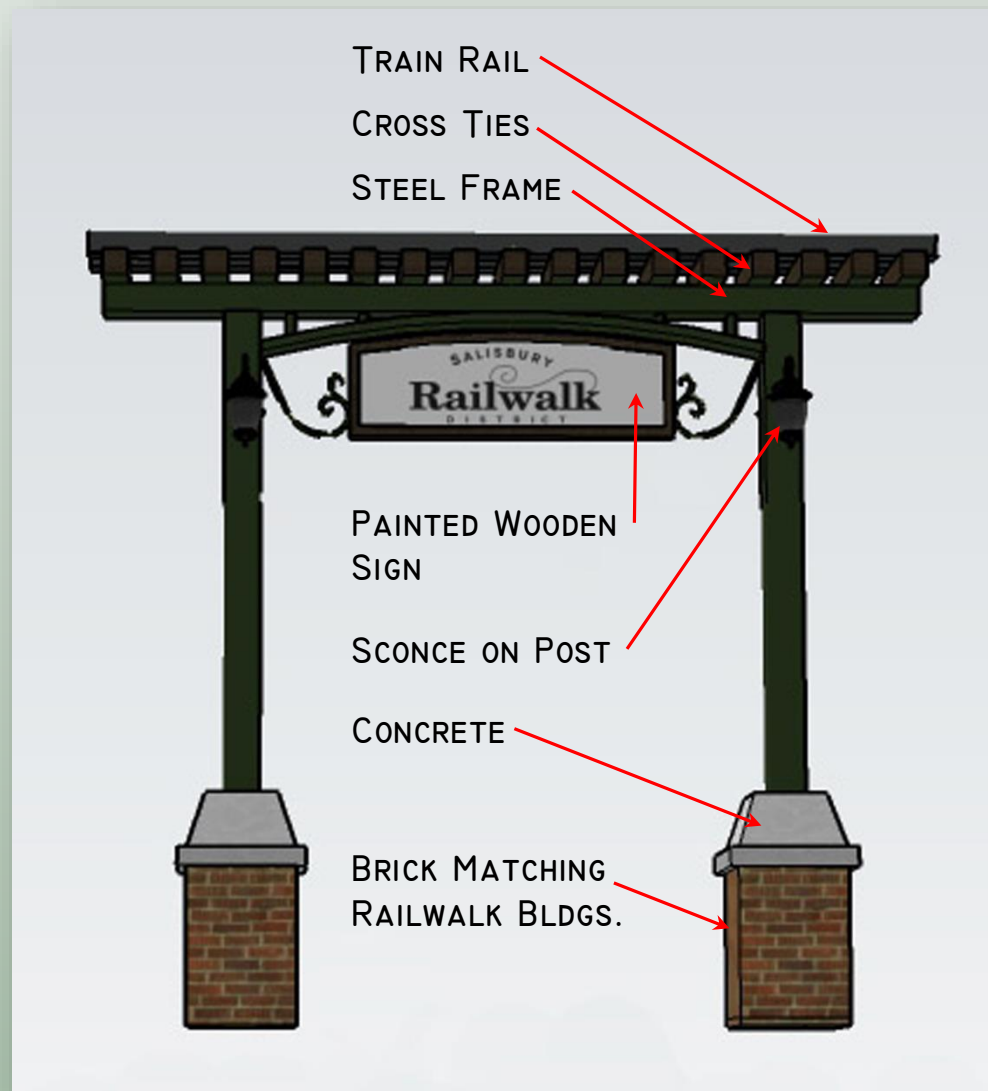
Features

Product Type	Globe String Lights
Finish	Black
Lighting Finish	Black
Power Type	Plug-In
Bulb Type	LED
LED Dimmable	Yes
Vintage Filament Bulb Included	Yes
Glass Component	Yes
Replaceable Bulb Included	Yes
Number of Lights	18
Bulb Base	E26/Medium (Standard)
Bulb Shape	S14
Bulb Life	10000 Hours
Bulb Wattage	2 Watts
Voltage	120 Volts
Primary Material	Plastic
Primary Material Details	Rubber
Additional Materials	Glass
Weather Resistant	Yes
Weather Resistant Details	Weatherproof
Water Resistant	Yes
Water Resistant Details	Waterproof
Shade Included	No
Year Round Use	Yes
Outdoor Use	Yes
Country of Manufacture	China
Color Temperature	2700 Kelvin

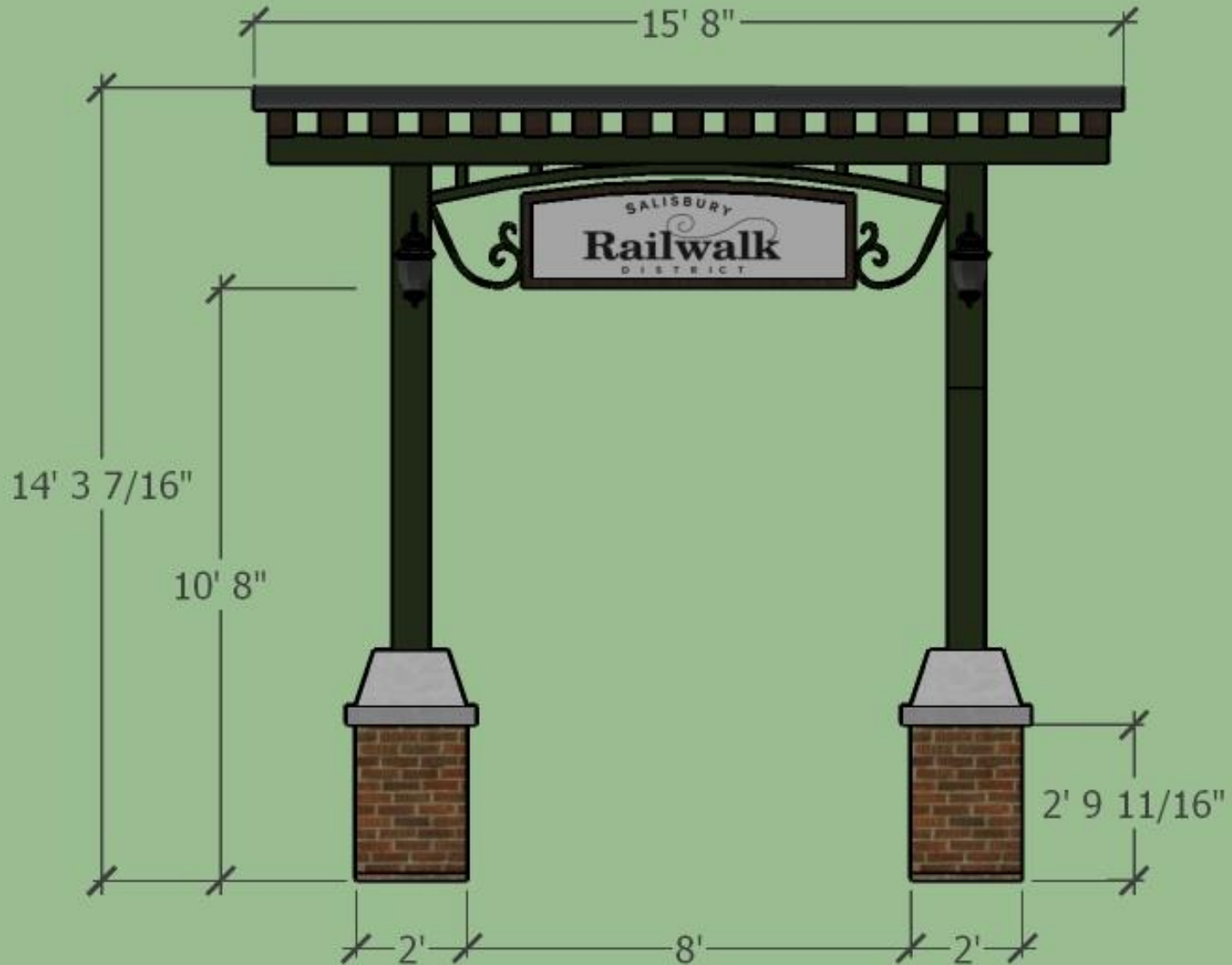
FESTOON LIGHTING ON RAILWALK



GATEWAY ARCH WITH WOODEN SIGN



GATEWAY ARCH WITH WOODEN SIGN





EXISTING LITTER RECEPTACLES ON RAILWALK

The **MIDTOWN LITTER RECEPTACLE** allows you the freedom to coordinate with a bench series, or mix and match for an eclectic motif. Beautify your surroundings with our exclusive collection of litter receptacles.



MT3-32



STANDARD FEATURES

- Color: exclusive KEYSHIELD® polyester powder coating finish
- Support: elevated or adjustable
- Liner: commercial-grade plastic
- Lid: matching flat lid with anti-theft lanyard
- Fully assembled unit
- Continuous weld seams
- Three-year warranty
- Made in the USA



CUSTOM OPTIONS

- Color: custom KEYSHIELD® powder coat
- Support: bury extension
- Liner: galvanized or powder coated steel
- Lid: elevated, elevated ash, dome, ash dome, dome with galvanized door, recycling and trash
- Sleeve: custom KEYSHIELD® powder coat color
- Materials: sustainable hardwood, stainless steel, recycled plastic



ENHANCEMENTS

- Inquire about coordinating benches, ash urns, planters, tables, and other furnishings
- Ash filler
- Ash sifter
- Litter mount ash tower
- Cast bronze plaques
- Laser cuts
- Decals



MIDTOWN



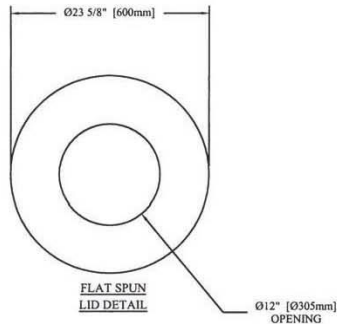
MIDTOWN LITTER RECEPTACLE

Bench with back is covered by patent no. des. 457,742. All other Midtown pieces are Exclusive By Design™.

KEYSHIELD® METAL FINISH

The trademarked KEYSHIELD® finish protects each piece of furniture from chipping, cracking, and UVA damage while providing unparalleled corrosion resistance. Steel products are finished with a two-coat powder coating process applied to a 7-15 mil thickness. Substrate preparation includes sandblasting to a white finish to remove all surface contaminants. The raw product then receives a corrosion-inhibiting phosphate coating prior to the application of the powder coating. The first coat applied to the substrate is zinc rich epoxy powder primer used exclusively on sandblasted parts. The second coat is a colored polyester powder coating. Both coats are electrostatically applied and oven cured according to powder coating manufacturing specifications to create a smooth, satin-like finish and a low-emitting non-porous armor.

	MT3-22	MT3-32	MT3-38
	22 gal.	32 gal.	38 gal.
DIAMETER (B)	26"	31 1/4"	31 1/4"
ELEVATED LEG (A) 27	3/4"	33 1/2"	33 1/2"
ADJUSTABLE LEG	26 3/4"	32 1/2"	32 1/2"
LID DIAMETER	19 1/2"	23 5/8"	23 5/8"
WEIGHT	136 lbs.	164 lbs.	175 lbs.

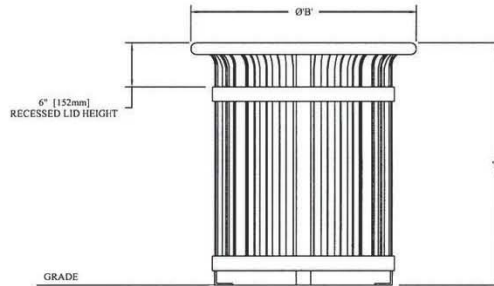
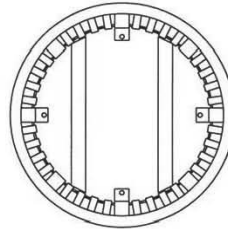


FULLY ASSEMBLED UNIT

The Midtown litter receptacle is manufactured in the USA as a fully assembled unit to provide ultimate stability and avoid damage during transit to the site, saving time and money.

MATERIALS

Commercial-grade materials, at least 25% recycled raw steel, 100% recyclable steel; completely welded for optimum strength and stability; sizes and dimensions according to Keystone Ridge Designs, Inc. CAD drawing; alternating pattern of vertical 1/4" x 1" and 1/4" x 2" steel straps attached to 1-1/2" OD 11 gauge tubing top hoop; 1/4" x 2" middle and bottom rings; 1/4" x 2" flat liner base support; 16 gauge spun metal lid; plastic liner and polyester coated stainless steel lanyard attached to lid and receptacle.



EXISTING LITTER RECEPTACLES ON RAILWALK

PROPRIETARY STATEMENT

Keystone Ridge Designs, Inc.® is proud to offer the design community exceptional site amenities. Due to the time and resources invested in designing, manufacturing and marketing Keystone Ridge Designs' products and services,

we pursue design patents, copyrights, trademarks and service marks whenever possible. Any unlawful duplication or misrepresentation of Keystone Ridge Designs' products will be rigorously protected.



Wakefield Collection
Wakefield 1 Light LED Outdoor Wall Light BKT
 49751BKTLED (Textured Black)



Dimensions

Height	17.75"
Width	7.00"

Project Name: _____
 Location: _____
 Type: _____
 Qty: _____
 Comments: _____

Ordering Information

Product ID	49751BKTLED
Finish	Textured Black
Collection	Wakefield Collection

Dimensions

Extension	10.00"
Height from center of Wall opening	9.50"
Base Backplate	10.50 X 5.25
Weight	7.00 LBS

Photometrics

Kelvin Temperature	3000 K
Color Rendering Index	90

Specifications

Material	Aluminum
Glass Description	Clear Vertical Rain

Electrical

Dimmable	Yes
----------	-----

Dimmable Notes

This LED is compatible with most standard incandescent dimmers, LED dimmers, and electronic low voltage dimmers. For more information, go to Kichler.com/dimming.

Voltage	120 V
Input Voltage	Single(120)

Qualifications

Safety Rated	Wet
Title 24	Yes
Class 2	Yes
Expected Life Span	40000 Hours
Warranty	www.kichler.com/warranty

Primary Lamping

Light Source	LED
Lamp Included	Integrated
Light Source Equivalent	100(1) Incandescent
Number of Lights/LEDs	1
Delivered Lumens	675

PROPOSED SCONCE LIGHTING ON RAILWALK GATEWAY ARCH



BASIS OF DESIGN

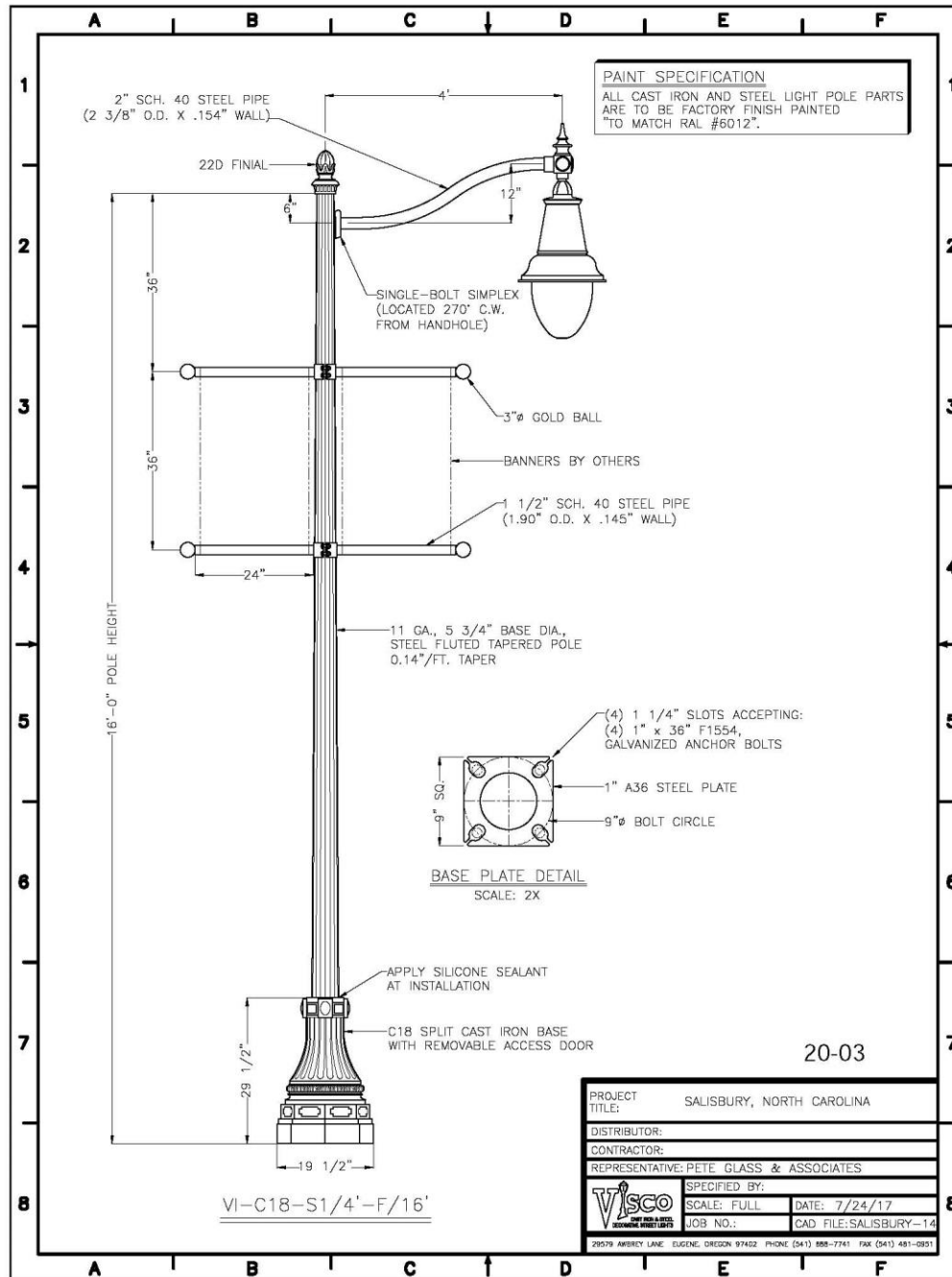


N. LEE ST. 300 BLOCK

POLE LIGHT FIXTURE



POLE LIGHT FIXTURE





SALISBURY
Railwalk
DISTRICT

RAILWALK
SHOP SIGN
SHOP SIGN
SHOP SIGN
SHOP SIGN
SHOP SIGN
SHOP SIGN
SHOP SIGN

Lee
St
theatre

Great
Experience
BRYAN COUNTY the sun enlightened

Railwalk
Craft
Experience