

GREAT OUTDOORS

YORKSHIRE COAST

NORTH YORK MOORS

& THE HOWARDIAN HILLS





Forestry England



Discover Dalby Forest

Explore walking, running and world-class bike trails in stunning surroundings

Try out Go Ape, learning sessions and activity centre adventures! You can enjoy family play areas, picnic sites, cafes and tranquil BBQ spots. We have a visitor centre, bike hire and year-round events for everyone.

5 miles north-east of Pickering, North Yorkshire.
Parking charges apply. Annual membership available.
t: 01751 460295 e: dalbyvisitorcentre@forestryengland.uk

@dalby_forest dalbyforestfc

forestryengland.uk/dalbyforest

WELCOME TO THE YORKSHIRE COAST & NORTH YORK MOORS!

Whether you're seeking thrilling adventure or gentle escapism – or both - there is no better place to be outdoors than the Yorkshire Coast and North York Moors National Park. Surrounded by Britain's most beautiful and extraordinary landscapes, a tranquil haven for some of our most precious wildlife, this is a land of unparalleled variety – a unique, natural outdoor playground, where you can leave crowds, traffic and cares behind, and explore at your own pace, by air, land or sea.

In the south are lazy golden sands, secret coves and rock-pool realms, rolling patchworks of lush farmland, the paradise

parkland of grand country houses, and slow river valleys where otters play. In the north are breath-taking, top-of-the-world moorland panoramas, ancient woodland alive with colour and bird-song, historic fishing villages clinging to craggy cliff-tops, and fossil footprints. Myths surround time-worn ruins and strange, giant landmarks. And at night, the stars shine brighter than most other places in the UK.

You'll discover world-class trails with famous views and ancient history, Britain's best beaches, outdoor centres with experts offering a helping hand, and action-packed, championship events. At journey's end, relax in picturesque towns and villages, indulging in award-winning food and drink, spa healing and rejuvenating nights of sleep.

So, where do you start? This Outdoor Guide will give you a few signposts, then plan your path to pleasure at

discoveryyorkshirecoast.com
northyorkmoors.org.uk
visitnorthyorkshire.com
howardianhills.org.uk

CONTENTS

2	Going for a Walk Or Run?
4	Easy Access Walk - Runswick Bay
6	World-Class Road Cycling
8	Castle Howard & Nunnington Hall Cycle Route
10	North York Moors Cycleway
11	E-bikes
12	Our Great Outdoors
14	Cycling Off-Road
16	A Wildlife Wonderland
18	Swing Into Golf
20	A Way With Watersports
22	Best of British Surfing
23 - 27	Featured Businesses
28	Getting Here...



GOING FOR A WALK OR RUN?



From welly wanders over stepping-stone streams and pooh-stick bridges, to epic voyages following in the footsteps of rebel warlords and saintly monks... Discover a walker's and runner's kingdom, where entire vistas and natural worlds are revealed only to those on foot.

You can walk or run right across the region from north to south, and east to west on long-distance routes like the Cleveland Way National Trail. You can turn a walk into a safari, seeking elusive wildlife, fossils, or foraging for food! Or just step out for a short while to enjoy a majestic view, a marvel of nature, or a rare quiet moment.

BEST SEA VIEWS

Yorkshire's dramatic coastline is the most varied in Britain, with all of your favourite bits of seaside rolled into one along the coastal paths. Seek romantic views across Ravenscar and Robin's Hood Bay, artist's inspiration from Staithes to Whitby, and wondrous wildlife from Filey to Flamborough.

ENCHANTED WOODLAND DELLS

Wild spring daffodils in Farndale; an autumnal blaze of colour as the leaves change in the Howardian Hills, an Area of Outstanding Natural Beauty; the magical waterfall and 'fairy-glade' of Falling Foss near Whitby or the enchanting sweep of bluebells in Riccal Dale, near Helmsley.

BEST 360° VIEWS

Sutton Bank was a favourite of James Herriot author, Alf White, while Alfred Wainwright preferred Clay Bank on the Cleveland Way. Blakey Ridge and Danby Beacon along the Esk Valley Walk will take your breath away, while the Hole of Horcum is legendary.

TIME TRAVELLING

You'll be walking through history with every step, in one of Britain's most important archaeological landscapes. Discover fossil-hunting on the 'Dinosaur Coast', like Port Mulgrave, Boggle Hole and Cayton Bay; mysterious ancient trackways with standing stones as lonely guides; and iconic castles and abbeys – like Rievaulx or Whitby – with historic walks in between.



TRY A TRAIL... ACCESS WALKS

RUNSWICK BAY

A pleasant walk along the cliff top with wide views over Runswick Bay.



1 **P** **S** (Pay & Display)



2 Turn left out of the car park and walk back along the road.



3 At the Runswick Bay Hotel turn right into the hotel car park.



4 Follow the stone path in the far right corner. This section currently has some loose stone which may be awkward to use.



5 **G** Go through the kissing gate. The path rises very slightly before descending towards the cliff edge.



6 **S** **VP** **I** At the cliff edge turn left along the cliff path.



7 The path now follows a level grass/earth surface, which is a bit bumpy in places.



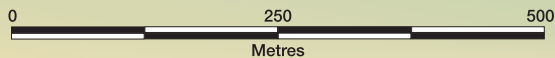
8 Towards the end of the second field, where there are great views towards Kettleless, turn around and return by the same path.

KEY

- Tarmac road or path
- Compact hard surface, occasional stones or gravel
- Compact earth/short grass
- Occasionally bumpy grass
- Ruts, stones etc.

- Gate
- Parking
- Seat
- Information Panel
- View Point
- Toilets
- Photo Location

This map is reproduced from Ordnance Survey digital map data. © Crown copyright 2010. All right reserved. Unauthorised reproduction infringes Crown copyright and may lead to prosecution of civil proceedings. North York Moors National Park Authority Licence No. 1000221930 © North York Moors National Park 2010



WORLD-CLASS ROAD CYCLING

(AND TWO-WHEELED FREEDOM)

With its spectacular scenery and world-class routes, it's no surprise that the Yorkshire Coast and North York Moors attracted the world's superstars for the Tour de Yorkshire which was one of Britain's most popular road races and one of the most significant events that took place in the international cycling calendar.

There's a vast cycling landscape waiting to be explored, unrivalled in the UK for its glorious variety and richness. From lazy riverside meanders perfect for Sunday tandems (or little legs) where cars are a distant memory, to Britain's toughest 'king of the mountain' climbs with breath-taking views.

GOING THE DISTANCE?

A must visit is the Yorkshire Cycle Hub in Great Fryup Dale, with classic moorland road routes from the doorstep and fantastic facilities. Look out for popular circulars around the Esk Valley, including Egton Bridge, and further afield, the Bransdale Loop or Leavening Brow & Kirkham Gorge. Explore long-distance Sustrans National Cycle Routes 65, 165 and 168, the 179-mile Walney to Whitby (W2W) through the Esk Valley or the North York Moors Cycleway, a figure of eight route following quiet moorland and coastal roads.

A GENTLER PACE?

Head for the Howardian Hills, where the countryside barely rises above 200m as you pedal along quiet country lanes through stunning scenery, heritage and wildlife. Or explore circular 'Big Sky' rides along olde-worlde country lanes, coasting along the unusual chalkland plateau of the Yorkshire Wolds.

FAMILIES AND FIRST-TIMERS?

Start at Sutton Bank National Park Centre or Dalby Forest, with trails along quiet lanes or forest roads, and top-class cycling centres offering bikes, a range of fun activities or skills sessions, and great cakes and hearty meals in the cafés.



If you're after a challenge, give these hill climbs a go:

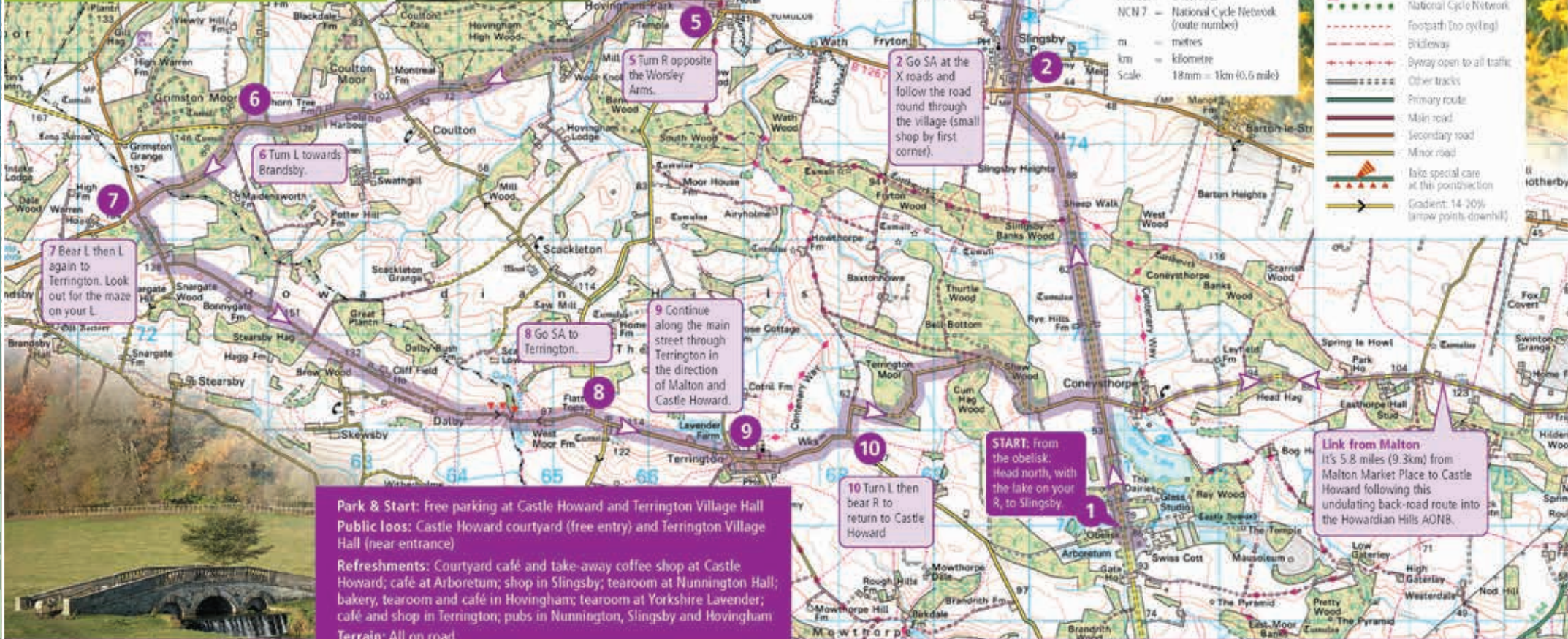
- > Carlton Bank
- > White Horse Bank
- > Rosedale Chimney Bank
- > Boltby Bank
- > Sled Gates (Robin Hood's Bay)



Castle Howard & Nunnington Hall

22.7 miles
(36.5km) hard ride

Rising and falling through parklands, woodland and picturesque villages, this is a true Howardian Hills ride. Climbs are rewarded with panoramic views of the Howardian Hills - beautiful in all seasons and the perfect excuse for a break to catch your breath. The ride takes you past Castle Howard, Hovingham Hall and Nunnington Hall, three of the grandest country houses in the AONB. As you ride along the lanes close to these you will see how their tree-lined avenues and parkland features have shaped the local landscape.



Park & Start: Free parking at Castle Howard and Terrington Village Hall
Public loos: Castle Howard courtyard (free entry) and Terrington Village Hall (near entrance)

Refreshments: Courtyard café and take-away coffee shop at Castle Howard; café at Arboretum; shop in Slingsby; tearoom at Nunnington Hall; bakery, tearoom and café in Hovingham; tearoom at Yorkshire Lavender; café and shop in Terrington; pubs in Nunnington, Slingsby and Hovingham

Terrain: All on road

THE NORTH YORK MOORS CYCLEWAY

Explore 170 miles worth of delights on the North York Moors Cycleway. Take it in your stride and spend up to 7 days pedalling along quiet moorland roads, iconic heather landscape, around hidden valleys, through deep forests and beside rugged coastlines.

Take in the wealth of history with castles and ruined abbeys, market towns and picture-perfect villages, folklore and tales of smuggling. It's a true North York Moors adventure.

View the full route and find out more www.cycle-england.co.uk/en/rides/rides-in-yorkshire/north-york-moors-cycleway

E-BIKES

Hiring an electric bike is a great way to explore the area:

- Big Bear Bikes, Pickering
- Dalby Bike Barn, Thornton-le-Dale
- Dalby Forest Cycle Hub
- The Bike Doctor, Helmsley
- Sutton Bank Bikes
- Yorkshire Cycle Hub,
- Great Fryup Dale
- Yorkshire Bike Hire, Swainby

It's worth booking in advance to ensure availability!



OUR GREAT OUTDOORS



CONTACT DETAILS

North York Moors National Park
 Tabular Hills Walk, Esk Valley Walk,
 Moor to Sea Cycle Route
 and other walks and rides
www.northyorkmoors.org.uk
tourism@northyorkmoors.org.uk



Cleveland Way & Yorkshire Wolds Way

Cleveland Way & Yorkshire Wolds Way
www.nationaltrail.co.uk/clevelandway
www.nationaltrail.co.uk/yorkshirewoldsway
m.hodgson@northyorkmoors.org.uk



Minster Way

www.minsterway.btck.co.uk
rayw2@rayw2.karoo.co.uk

Wainwright's Coast to Coast Walk

www.ldwa.org.uk

Sustrans

Way of the Roses, Walney to Whitby (or Wear)
 Pennine Cycleway, Yorkshire Wolds
 and other National Cycle Network routes
www.sustrans.org.uk
leeds@sustrans.org.uk



Trans Pennine Trail

www.transpenninetrail.org.uk
info@transpenninetrail.org.uk



FOR MORE INFORMATION ABOUT THIS BEAUTIFUL AREA

- Yorkshire Coast**
www.discoveryyorkshirecoast.com
- North York Moors National Park**
www.northyorkmoors.org.uk
- Howardian Hills AONB**
www.howardianhills.org.uk
- North Yorkshire**
www.visitnorthyorkshire.com

GETTING AROUND

A public transport journey planner is available on www.traveline.info

Bikes on trains
 Accompanied cycles are carried at no extra cost. Space may need to be reserved in advance.
www.nationalrail.co.uk/stations_destinations/cyclists.aspx



DISCOVER YOUR WILD SIDE, CYCLING OFF-ROAD

The Yorkshire Coast and North York Moors are a dream-world for any off-road adventurer, with one of Britain's best mountain-biking centres at Dalby Forest, and a vast cycling landscape, largely unexplored, and unlike anything else in the UK for its glorious diversity.

You can enjoy the country's finest 'wild' riding along exhilarating moorland singletrack and ridgeway. From top of the world trails with views to the horizon, and free from traffic and crowds, to forest tracks for winter riding or gentle escapism through a parkland paradise and riverside valleys.



For cross-country freedom, there's an outstanding network of bike-paths ideal for short rides or spending five or six days in the saddle, including the Moor to Sea Cycle Network, journeying across moorland, coast and forest in a scenic series of circular loops. Or the 'Cinder Track' with panoramic views across the coast, perfect for families or those seeking gentle roller-coastals!

For Britain's finest 'wild' cycling, favourite off-road starting points include Danby, Westerdale, Goathland, Rosedale Abbey and the Hole of Horcum. It's a great idea to hire a local guide to get the most out of the area!

The VIP Tour: the off-road trails around the Howardian Hills give unrivalled 'behind the scenes' access to the historic parklands and estates of some of the region's grandest country houses, including Castle Howard. They also pass close to several exceptional tea-rooms!

DALBY FOREST

is one of Britain's largest mountain biking centres, with cycling routes across an epic 8,000 acres, including the World Cup Trail, and a dedicated Bike Park with jumps and pump track.

SUTTON BANK NATIONAL PARK CENTRE

is one of the best moorland cycling centres, with 'top of the world' family-friendly, purpose-built traffic free trails, and a pump track offering the thrills of riding a loop of banked turns and rollers.

YORKSHIRE CYCLE HUB

in Great Fryup Dale has classic moorland off-road trails from the doorstep, and bunkhouse accommodation if you want to stay a little longer.



A WILDLIFE WONDERLAND

From the Minke whale to the UK's smallest raptor, the merlin, the Yorkshire Coast and North York Moors are home to Britain's most treasured wildlife, its spectacular land and sea-scapes are not just breathtakingly beautiful, but also internationally important habitats.

Explore one of the country's largest expanses of heather moorland, vibrantly colourful in summer, and rare on a global scale. Or some of Britain's most ancient woodland, with trees covering over 20% of the landscape and alive with bird-song and carpets of spring blooms.



On the Yorkshire Coast, encounter spectacular marine wildlife, with some of Europe's richest fishing seas attracting whales and dolphins, and a bountiful shoreline perfect for rock-pooling (and food-foraging). It's also one of the best places in Britain to spot sea-birds, with over 250,000 flocking to the coast each year - including the irresistible puffin!

TOP WILDLIFE SPOTTING SPOTS

Go on 'safari': uncover hidden worlds with experts at Yorkshire Coast Nature or Hidden Horizons; go whale watching from Whitby or Staithes; look for seabirds off Filey Brigg; join a coastal cruise from Whitby or Bridlington; hire a kayak in Filey or Runswick Bay and explore the coastline at your own pace; or find Britain's best rock-pooling at Robin Hood's Bay and Boggle Hole, Scarborough, and Flamborough's South Landing. Explore Fylingdales Moor, managed for conservation, it's a wildlife haven for rare plant, flower and bird species.

VISIT A FRIENDLY WILDLIFE CENTRE

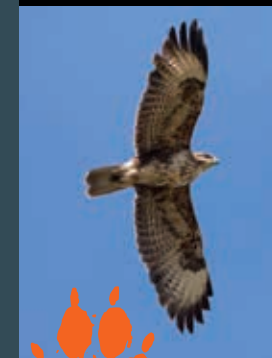
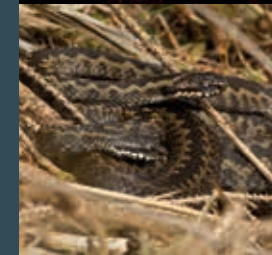
On the coast, head to the Living Seas Centre at Flamborough or Scarborough Sealife Centre, Yorkshire's only seal hospital. On land, Yorkshire Arboretum's 'garden of trees'; The National Centre for Birds of Prey in Helmsley with daily flight displays; and North York Moors National Park Centres at Sutton Bank or Danby.

GET A BIRD'S-EYE VIEW

Bempton Cliffs is the best place in mainland Britain to see gannets and puffins; Filey Dams freshwater lagoon is a magnet for unusual migrating birds; and Flamborough Head is one of the most important places in Europe for seabirds, with colonies right along the coast to Filey.

STARGAZE AT DARK SKY DISCOVERY SITES

At night you can enjoy Britain's best stargazing, with dark skies and clear horizons creating extraordinary nightscapes. Discover more at Dalby Forest Observatory and the National Park Centres at Danby and Sutton Bank. Celebrate the Dark Skies Festival in February with stargazing events across the region.



SWING INTO GOLF

The Yorkshire Coast and North York Moors rank amongst Britain's best golfing destinations, boasting one of the country's leading championship courses at Ganton Golf Club near Scarborough - one of just three UK locations to have hosted the Ryder, Walker and Curtis Cups.

There's a huge choice of golfing, from 27-holes to family fun. Scarborough loves golf so much it has two courses, on both the north and south cliffs, with stunning seaside views! Or you can play for days during the annual Scarborough Golf Open Week, a fun-filled tournament across four courses, that's been attracting golfers since 1921.



A GRAND PEDIGREE?

You'll like Filey Golf Club established in 1897 and originally designed by celebrated 'Gleneagles' architect, James Braid. Or Malton & Norton, favourite of champion and 'voice of golf' broadcaster, Peter Alliss.

A GRAND VIEW?

Kirkbymoorside has some of the best tee-side views, and is also home to one of the world's most prestigious amateur golf tournaments, the Trilby Tour. Whitby Golf Club's rolling panoramas extend over the harbour, famous abbey ruins, and picturesque bays beyond. While Flamborough Head's stunning cliff-top location has lighthouse views and a cunning course moulded to the contours of the famous headland.

GRAND FUN?

As you'd expect from the seaside, you'll have a huge choice, right along the coast, of crazy golf, mini golf, pirate golf, adventure golf, and also plenty of 9-hole courses, and driving ranges to practice that swing. Families can also tackle the Rosedale Abbey Challenge, a staggering 9-hole slope-side course with amazing views.

COURSES AROUND THE AREA INCLUDE:

- > Ampleforth Golf Club
- > Brigham Park
- > Filey Golf Club
- > Ganton Golf Club
- > Kirkbymoorside Golf Club
- > Malton & Norton Golf Club
- > Rosedale Abbey Golf
- > Scarborough North Cliff Golf Club
- > Scarborough South Cliff Golf Club
- > Snainton Golf Centre
- > Whitby Golf Club



A WAY WITH WATERSPORTS

The Yorkshire Coast and North York Moors are one of the UK's top locations for water-sports, with a passion for exhilarating adventure on the high seas – thanks to a tradition of sea-faring swashbucklers from Vikings and pirates, to the world's greatest explorer, Captain Cook.

It's also ideal for gentle drifting, blessed with tranquil rivers and lakes, hidden coves, and some of the country's finest beaches.

By board or boat, whether sailing or swimming, coastering or cruising, there are secret places you can only reach by water. It's also one of the best ways to enjoy breathtaking scenery, or a magical encounter with some of Britain's most precious wildlife.

If you're more of a spectator, then why not try a coastal cruise by boat, spine-tingling jet boat rides in Scarborough or one of the area's action-packed events including annual regattas in Filey, or the North's oldest at Whitby.

Getting started? Look out for one of the area's friendly water-sport centres, with qualified instructors and quality equipment to hire, including:

AQUAPARK

Make a splash at one of the largest expanses of water in the area at North Yorkshire Waterpark, just outside Scarborough. Challenge yourself with open water swimming or have a blast on the floating inflatable AquaPark, alongside paddle boarding, kayaking or sailing.

SEA KAYAKING

Try a Sea Kayaking Adventure paddle along the coastline to Boggle Hole, exploring local marine wildlife on the way.

RUNSWICK BAY

is a popular watersports haven, for both beginners and experienced adventurers. In the summer holidays you can hire kayaks or stand up paddleboards from Barefoot Kayak.

RIVER-TOURING

Drift along the River Esk at your leisure in a canoe from Ruswarp Pleasure Boats.



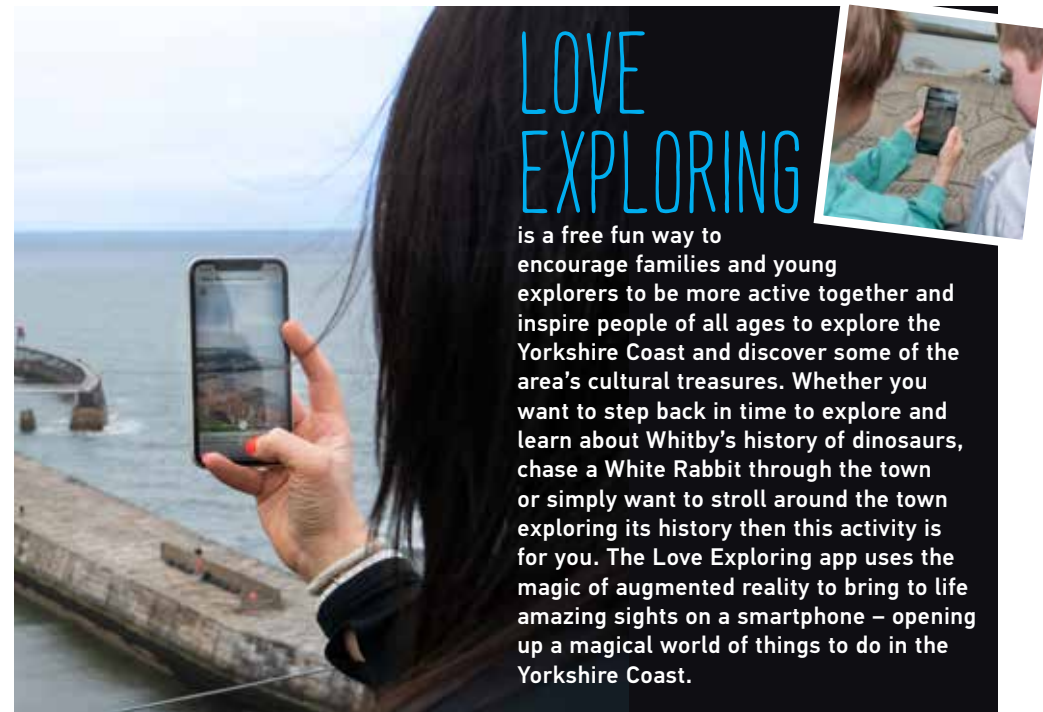
BEST OF BRITISH SURFING

The Yorkshire Coast is one of the best places in the country for surfing, with wide sweeping bays creating a huge swell window, and perfect conditions for all types of surfing year-round, including paddleboarding, kite and windsurfing if the waves are sleeping.

With so many miles of coastline to enjoy you'll rarely have to share a wave, and there are gentle beach breaks ideal for beginners, or powerful reef and point breaks for the more adventurous. The surfing capital is Scarborough, home to several friendly surf schools, with Cayton Bay, North and South Bays being favourite hot-spots.



Further up the coast, Saltburn (one of the UK's top ten surfing locations), Sandsend, and family-friendly Whitby are all magnets for surfers in the know. Speak to Saltburn Surf School or Whitby Surf School on Whitby's West Cliff for a helping hand, with qualified instructors and equipment hire – and there's spectacular scenery to admire when you're waiting for that next wave!





Sutton Bank is home to some of the best off-road cycling in England, with thrilling cycle rides straight from the door for both families and skilled riders.

Free entry • Five waymarked routes
Bike skills area • Bike hire
Adventure play area • Events
Café and gift shop • Wildlife-watching
England's finest view



North York Moors
National Park

northyorkmoors.org.uk/suttonbank
01845 597426



Home to the 'finest view in England' and gateway to the North York Moors National Park, head to Sutton Bank National Park Centre for unbeatable walking routes.

Free entry • Adventure play area
Events • Café and gift shop
Wildlife-watching • Trumper hire



North York Moors
National Park

northyorkmoors.org.uk/suttonbank
01845 597426



HELMSLEY WALLED GARDEN

Helmsley Walled Garden, Cleveland Way, Helmsley, YO62 5AH
Tel: 01439 772314 Web: helmsleywalledgarden.org.uk

Enjoy this tranquil and historic five acre garden, open from April till October. Beautifully laid out in small intimate garden spaces, you can wander through the Orchard, or discover the medicinal herbs grow by medieval monks. Enjoy specialist collections of irises and clematis or stroll down the 150m long Hot Border. Have lunch and light refreshments at the Vine House Café and shop for plants and gifts in our Plant Centre and shop. Full disabled access, dogs welcome on leads.



SCAMPSTON HALL & WALLED GARDEN

Scampston Hall, Malton, YO17 8NG
Tel: 01944 759111 Web: scampston.co.uk

Revel in the tranquility of the award-winning contemporary walled garden at Scampston, designed by renowned Dutch Plantsmen Piet Oudolf. Journey through the arresting perennial meadow, discover the contemporary waves of grass, and take time to enjoy the calm of the contemplative 'silent garden'. Beyond the walls, explore the traditional Hall gardens and 'Capability' Brown parkland, offering beautiful walks and scenic views. Stop by the Garden Café for a home-made lunch or cream tea and browse Scampston's unique plant nursery.



SCARBOROUGH FOOTGOLF

Killerby Cottage Farm, Killerby Lane, Cayton, YO11 3TP
Tel: 07519 189411 Web: scarboroughfootgolf.co.uk

Kick the football from the tee markers, along the fairway, onto the green and into the hole – just like golf with a football instead of a golf ball.

A great game for all ages, for families and groups of friends. We have two 9-hole footgolf courses. The second is adventure footgolf through the wood and there are obstacles to overcome. Play one or the other or combine the two.

Scarborough/Bridlington bus stops nearby.

SEA WHAT'S TO DISCOVER...

Share your story...
[#DiscoverYorkshireCoast](https://twitter.com/DiscoverYorkshireCoast)

WONDERFUL WHITBY ABBEY!

Discover Yorkshire Coast.com



The site is set in a country park with splendid views of Filey Bay with beach and town a short walk. It's also an ideal location for touring the Yorkshire Coast.

New facilities now include:

- New family cycle hire scheme - offering a range of adult Carerra and children's mountain bikes
- Stockist of admission tickets for many local attractions
- Stockist of a wide range of Calor Gas
- On-site Café open throughout the year
- Newspaper sales
- 2 heated amenity blocks
- Alcohol sales including beers, wines and procecco
- Children's play area
- Brand new outside seated picnic area
- Convenient site shop
- Laundry washing and drying facilities

Filey Brigg Caravan Park is well maintained with a new security barrier installed and new one way road system for improved safety - Friendly, helpful staff welcome you to the beautiful Yorkshire coast.

Filey Brigg Caravan & Camping Park, Filey Country Park, Church Road, Filey YO14 9ET. Tel: 01723 513852. Tel: 01723 513852. Email: fileybrigg.sca@northyorks.gov.uk

No. of Touring Caravan/Motorhome pitches: 161 | No. of Tent pitches: 14 max.



THE FOX & HOUNDS AINTHORPE

**REAL ALE - TASTY FOOD
ENSUITE ACCOMMODATION**

IDEAL LOCATION FOR:
WHITBY - ROBIN HOOD'S BAY - CYCLE HUB
THE MOORS CENTRE - DANBY CASTLE - SALTBURN
STAITHES- GOATHLAND - CASTLE HOWARD

**STUNNING VIEWS IN THE
HEART OF THE NATIONAL PARK**

OPEN ALL DAY - 7 DAYS A WEEK
SAUNA - OPEN FIRE - REAL ALE

THE FOX & HOUNDS
45 BROOK LANE
AINTHORPE, DANBY, WHITBY
YO21 2LD

01287 660218
WWW.FOXANDHOUNDSAINTHORPE.COM



KELD HEAD FARM COTTAGES

Pickering, North Yorkshire. YO18 8LL
Tel. 01751 473974 Web: www.keldheadcottages.com



Set in PICKERING these traditional stone cottages having pantile roofs, stone fireplaces, beamed ceilings, large gardens with garden house and play area. Tastefully furnished with the emphasis on comfort and relaxation, superbly equipped, spacious, cool in summer and warm in winter. The cottages sit in open countryside where sheep graze yet only a short walk to the centre of the ancient market town with its steam railway, good restaurants and pubs and a short drive to the North York Moors National Park

BIKE & BOOT - BARECA

Cliff Bridge Terrace, Scarborough YO11 2HA
Tel. 01723 655555 Web: www.bikeandboot.com



Coffee - Cake - Pizza, Pasta & Grills
Relax, we don't take bookings. Just get here when you're ready & we'll look after you. Choose from Mediterranean classics, pizza, pasta & grills - cool beers, iced cocktails, coffees & smoothies. Open to non-residents.

Serving times*: Breakfast 7am - 9.30am Weekdays, 7.30am - 10am Weekends & Bank Holidays. Cafe Menu | 11am - 5pm Lunch Menu | 12pm - 2pm Dinner Menu | 5pm - 9pm Bar | 12pm - 11pm
*Great sea views at any time of the day.



GETTING HERE...

The Yorkshire Coast and North York Moors are one of the UK's premier holiday destinations and are easily accessible by rail, car, coach, bus, air or ferry.

By car: from the A1 or M1, both run close to York in North Yorkshire.

By train: most train journeys to the area arrive via York, Middlesbrough, Doncaster or Hull. There are train stations at Malton, Scarborough, Whitby, Filey and Bridlington.

By bus: the area is well served by National Express, while the local Yorkshire Coastliner connects Leeds and York with Malton, Pickering, Goathland and Whitby.

By air: the nearest airports are Leeds Bradford, Teesside International Airport and Newcastle, with regular train and bus connections to the area. Although slightly further away, Manchester Airport is served by direct rail connections into Northallerton, Thirsk, Malton and Scarborough.

ONCE YOU'RE HERE...

The area has a good network of rail and bus routes, serving many of the main towns and villages (if you don't want to get out on those walking and cycling trails!)

What about journeying by steam train? On the North Yorkshire Moors Railway, you can journey 24 miles across stunning moorland between Pickering and Whitby, with stops at the 'Harry Potter' station in Goathland.

For one of the most picturesque and romantic train journeys in the country, ride the Esk Valley Railway, a 35-mile trip from Middlesbrough to Whitby, stopping at National Park villages in between.

WHERE TO FIND OUT MORE

For further information and advice when planning your trip to the Yorkshire Coast and North York Moors, talk to the friendly and dedicated team at the Tourism Bureau on 01723 383636. Alternatively, you can find everything you might need to plan your trip at www.discoveryyorkshirecoast.com



Discover
Yorkshire
Coast



Published by the North York Moors National Park, North Yorkshire Council and the Howardian Hills National Landscape. Copyright © January 2024. All images and editorial are protected by copyright law and should not be reproduced or used in any format whatsoever without written permission from North Yorkshire Council or the relevant photographer. Whilst every care has been taken to ensure the information contained within this publication is accurate, North Yorkshire Council and its partners cannot accept responsibility in respect of any error, misstatement or alteration which may have occurred. No recommendation of any particular business is implied by its inclusion in the guide.

Front Cover Photography: Ceri Oakes/NYMNP
Other Photography: Ceri Oakes/NYMNP, Dan Prince, Russell Burton, Visit England, Dalby Bike Barn, Joolze Dymond, Paul Harris, Richard Baines, Steve Race, Yorkshire Coast Nature, Steve Bell, Chris J Parker, Chris Lazenby/NYMNP, Tony Bartholemew, Richard Burdon, NYMNP, Duncan Lomax, Bay Watersports and Charlotte Graham.

Design & Print: adverst.co.uk

PEASHOLM PARK

NORTH BAY, SCARBOROUGH 01723 383636

HOME TO THE WORLD FAMOUS NAVAL WARFARE

A UNIQUE MINIATURE SEA BATTLE

Naval battles take place every
Sat, Mon & Thurs in July and August



Dragon pedalos • Rowing boats & canoes • Peasholm Island
Oriental gardens • Putting Green • 18 hole mini golf
Buttercup Kiosk • Public conveniences
Glen Tree Trail • Lakeside walks

/peasholmpark @peasholmparkuk

VOTED ONE OF EUROPE'S FAVOURITE PARKS!



High Oaks Grange

Cottages • Lodges • Glamping



The Grange is our fabulous Farm House



High Oaks Grange is a collection of luxury cottages, lodges, glamping pods and our fabulous six bedroom farm house, all set within 60 acres of beautiful Yorkshire countryside. Uniquely located in the North York Moors National Park, only a mile from the picturesque towns of Pickering and Thornton-le-Dale. You will find your perfect holiday or short break at High Oaks Grange.



Woodland Lodges

Cosy Cottages

Stylish Glamping



www.highoaksgrange.co.uk



01751 469351

High Oaks Grange, Thornton Road, Pickering, North Yorkshire, YO18 7JX