



Explore

Schuylkill

Adventure Guide



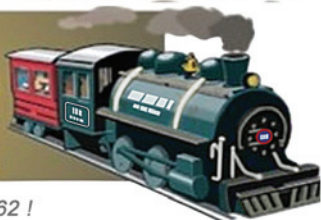
2025

Schuylkill County, Pennsylvania | 570-622-7700 | www.schuylkill.org

PIONEER TUNNEL



COAL MINE



Established 1962!

& STEAM TRAIN

The Mine with More...

Travel 1800 feet inside a real coal mine as experienced tour guides share the history of the Anthracite Coal Region!

Outside, Lehigh Valley Coal Co. 1920s steam lokie takes you on a journey to learn about surface and "bootleg" mining!

Visit our Souvenir Shop, and neighboring park.
Plenty of free on-site parking!

Easily accessible from I - 81; From I - 80 take I - 81 S to Exit 124B (Frackville Exit), then take PA Route 61 N to Ashland. From I - 78 take PA Route 61 N to Ashland



YEARLY SCHEDULE:

April ~ Available for Group Tours Only!

May ~ Saturdays & Sundays

Memorial Day thru Labor Day ~ Tues thru Sunday

After Labor Day ~ Sat & Sun Only, other than Groups & Special Events

Tour Groups ~ Call to Schedule, anytime Tues thru Sunday

April thru November

50 Minimum Paid Riders

Call for Info & Deposit Required

Check Out our Website & Follow Us on Facebook!

Pioneer Day! Hand-on-the-Throttle & Night Photo Sessions! Fall Foliage & Santa Trains!

1900 OAK ST. ASHLAND, PA. (570) 875-3850

GPS: 2001 WALNUT ST. EMAIL: INFO@PIONEER TUNNEL.COM

WE ACCEPT MASTER CARD, VISA, AMERICAN EXPRESS, DISCOVER & CASH!

Welcome

to **Schuylkill County**
PENNSYLVANIA

CONTENTS

Things to Do

- 6** Agritourism
- 6** Arts & Culture
- 8** Attractions
- 10** Craft Beverages
- 14** Craft Beverage Trail
- 16** Events
- 18** History/Heritage
- 20** Museums & Tours
- 21** Recreation
- 22** The Great Outdoors
- 24** Dining
- 28** Shopping
- 34** Ways to Stay with Us
- 38** Services & Community
- 44** Hiking in Schuylkill County



(570) 622-7700
103 E Union Street, Rear
Pottsville, PA 17901
www.schuylkill.org



Cover and Table of Contents photos by William Derbes.

This guide was published by Explore Schuylkill. At time of press, every effort was made to ensure the accuracy of the information contained within this publication. All rights reserved. No part of this publication may be reproduced in any way except with written permission from the publisher and/or the advertisers.

Send inquires to: Explore Schuylkill, 103 E Union Street, Rear, Pottsville, PA 17901 or (570) 622-7700. Explore Schuylkill accepts no responsibility for the consequences of error or for any loss or damage suffered by users of any of the information and material contained in this publication.

Visit

JERRY'S

Classic Cars &
Collectibles
Museum

Relive the 50s and 60s with over 20,000 items of interest.



2 Full Floors of Unique Memorabilia.
Enjoy a relaxing self-guided tour back
in time to the 50s & 60s and leave
with an unforgettable experience!

Open May thru October
Friday, Saturday, and Sunday
Noon until 5 p.m.



Ranked as the #2 Attraction in Pottsville, PA on Trip Advisor

General Admission - Seniors, Military, & AAA Member Discounts
Weekday Group Tours Available. Call for info.

394 S. Centre St., Pottsville • 570-622-7000 • www.jerrysmuseum.com



WWW.CHOSEHAPPINESS.ORG



Yuengling®

MUSEUM & GIFT SHOP

420 Mahantongo Street
Pottsville, PA 17901 • 570.628.4890

Tours are open to the public and FREE for all ages
Completely closed shoes are required
Visit Yuengling.com for our hours and tour times

Enjoy Responsibly.

\$15 OFF \$100

Order must have minimum of \$100 subtotal before tax. Excludes beer sales. Must present coupon at time of purchase. Limit one coupon per customer. Redeemable only at the Yuengling Brewery Pottsville Gift Shop. Coupon valid until 12/31/2025.

**FIGHTER'S
HEAVEN**
DEER LAKE, PA

Muhammad Ali Training Camp Historical Site



58 Sculps Hill Rd.
Orwigsburg, PA 17961
Phone: 570-968-2961
fightersheaven.com

FREE AND OPEN TO THE PUBLIC

Things To Do

AGRITOURISM

The Farm Store

113 East Norwegian Street
Pottsville PA 17901
farmstorepottsville.com

Hometown Farmer's Market

125 Mahanoy Avenue, Route 54
Tamaqua PA 18252
(570) 668-2630
hometownfarmmkt.com
(See our ad on page 32)

Hope Hill Lavender Farm

2375 Panther Valley Road
Pottsville PA 17901
(570) 617-0851
HopeHillLavenderFarm.com
(See our ad on page 7)

Miller Charm Farm

137 St. Peter's Road
Tamaqua PA 18252
(570) 386-4387
millercharmfarms.com

Pioneer Evergreen Farms

159 East Adamsdale Road
Orwigsburg PA 17961
(570) 366-2619
PioneerEvergreenFarms.com

Schuylkill County Fair Association

Schuylkill County Fairgrounds
2270 Fair Road
Summit Station PA 17979
(570) 754-3247
schuylkillfair.com

ARTS, CULTURE

Actors Guild of Schuylkill County

229 N Mill Street
Saint Clair PA 17970
(570) 294-0858
agosc.org

Anthracite Philharmonic

PO Box 1367, Pottsville PA 17901
(570) 640-1472
antphil.org

Gabriel Chamber Ensemble

PO Box 36 Orwigsburg PA 17961
(570) 943-2558
gabrielensemble.org

Hegins Valley Arts & Crafts Faire

Hegins Park, Park Lane
Hegins PA 17938
(570) 682-9541
heginscraftfaire.com

Majestic Theater

209 North Centre Street
Pottsville PA 17901
(570) 628-2833
majestictheater.net

Things to Do

Mud & Maker

311 Washington Street
Port Carbon PA 17965
(484) 650-2745
mudandmaker.com

Tamaqua Arts Center

125 Pine Street
Tamaqua PA 18252
(570) 668-1192
tamaquaarts.org

Schuylkill Choral Society

PO Box 302
Pottsville PA 17901
(570) 628-3388
schchoral.org

Walk In Art Center

220 Parkway Ave.
Schuylkill Haven PA 17972
(570) 732-3728
walkinartcenter.com

Schuylkill County Council for the Arts

1440 Mahantongo Street
Pottsville PA 17901
(570) 622-2788
schuylkillartscouncil.com

The Wilds

3236 W Lizard Creek Road
Lehighton PA 18235
(570) 818-4433
marathonbarevents.com



LAVENDER, POLLINATOR GARDENS, FARM STORE, AND SCENIC VIEWS
ESSENTIAL OIL LAVENDER BOUQUETS CANDLES SOAPS PLANTS HONEY AND MORE!



Hope Hill Lavender Farm offers our quality lavender products, local artist and MADE IN USA merchandise in a scenic shopping environment. We have seasonal hours, farm tours, & online ordering.

We can also be found in some retail locations-see website. Sign up for emails at www.hopehilllavenderfarm.com to be updated on our farm news.

Visit us for a peaceful shopping experience.



570-617-0851 HopeHillLavenderFarm.com 2375 Panther Valley Rd., Pottsville, PA 17901

570.622.7700

Things to Do

ATTRACTIONS

Crystal Cave

963 Crystal Cave Road
Kutztown PA 19530
(610) 683-6765
crystalcavepa.com

Fighter's Heaven

58 Sculps Hill Road
Orwigsburg PA 17961
(570) 968-2961
fightersheaven.com
(See our ad on page 5)

Hawk Mountain Sanctuary

1700 Hawk Mountain Road
Kempton PA 19529
(610) 756-6000
hawkmountain.org

Jerry's Classic Car & Collectibles Museum

394 S. Centre Street
Pottsville PA 17901
570-628-2266 (weekends) or
570-622-9510 (weekdays)
jerrysmuseum.com
(See our ad on page 4)

No. 9 Mine & Museum

9 Dock Street (Off Route 209)
Lansford PA 18232
(570) 645-7074
no9coalmine.com
(See our ad on page 20)

Pioneer Tunnel Coal Mine

19th and Oak Sts.
Ashland PA 17921
(570) 875-3850
pioneertunnel.com
(See our ad on the inside front cover)

Schuylkill County Historical Society, Museum, and Gift Shop

305 North Centre Street
Pottsville PA 17901
(570) 622-7540
schuylkillhistory.org
(See our ad on page 9)

Yuengling Brewery Museum and Gift Shop

420 Mahantongo Street
Pottsville PA 17901
(570) 628-4890
yuengling.com
(See our ad on page 5)

Schuylkill County Historical Society

Voted by People's Choice the best museum in 2024!

New this year



Pottsville Maroons
Exhibit.



Family & General



research available.

Discover the history



of the County.



www.schuylkillhistory.org

Browse in our



gift shop.

OPEN: Wed., Thurs., Fri., 10am - 4pm

Sat., 10am - 2pm

570-622-7540

www.schuylkillhistory.org

Things To Do

CRAFT BEVERAGES

Armstrong Valley Winery

212 Rutter Road, Halifax PA 17032
(717) 896-7700
armstrongvalleywinery.com

Benigna's Creek Vineyard and Winery

1585 Ridge Road
Klingerstown PA 17941
(570) 425-3090
bcwinery.com

Bright Path Brewing

1215 North Street
Jim Thorpe PA 18229
(570) 732-9990
brightpathbrewing.com

Cellar Beast Winehouse

139 Ash Circle
Andreas PA 18211
cellarbeastwine.com

Galen Glen Vineyard & Winery

255 Winter Mountain Drive
Andreas PA 18211
(570) 386-3682
galenglen.com

Hairy Guys Brewing

204 Center Street
Jim Thorpe PA 18229
(610) 714-7441
Hairyguysbrewing.com



MAIN STREET MOONSHINE

SCHUYLKILL HAVEN, PA

Restaurant & Distillery

Distillery Tours, Tastings, & Make Your Own Flavor

Take a step back in time and experience the 1920s and 30s Prohibition Era, when alcohol was illegal but speakeasys flourished!

Enjoy a bite to eat at our restaurant. Tour our distillery and learn how moonshine is produced, flavored, & bottled.

101 W Main St., Schuylkill Haven, PA

Visit our website for current hours, tours, and special events.

www.MainStreetMoonshine.com

Things to Do

Jack-Azz Distilling

48 Kushwa Road
Spring Glen PA 17978
(570) 778-1040
jackazzdistilling.square.site

King Cole Winery

152 Kiehners Road
Schuylkill Haven PA 17972
(570) 617-8592
kingcolewinery.org

Lakeside Ballroom and Winery

40 Crystal Lane
Barnesville PA 18214
(570) 205-0093
thelakesideballroom.com

Long Trout Winery

84 Fork Mountain Road
Auburn PA 17922
(570) 366-6443
longtroutwinery.com

Lost Mined Brewing Company

100 S Market Street
Shamokin PA 17872
(570) 648-1191
lostmined.com

Main Street Moonshine

101 W Main Street
Schuylkill Haven PA 17972
(570) 593-5835
mainstreetmoonshine.com
(See our ad on page 10)

Featuring 24 different handcrafted beers BREWED ON-SITE!

Facebook.com/StokersBrewingCompany

STOKER'S BREWING COMPANY

OPEN: Friday, 4-10 PM / Saturday, 2-10 PM

#stokersbrewingcompany

36 Mauch Chunk Street
Tamaqua, Pennsylvania

Award Winning Craft Brewery

stokersbrewingcompany.com

Judged BEST OF SHOW 🏆 2024 Pennsylvania Farm Show



CRAFT BEVERAGE TRAIL

Explore
Schuylkill

Ready to Explore?

The Explore Schuylkill Craft Beverage Trail is the perfect way to explore the best local breweries, wineries, and distilleries in the area. Discover unique and delicious craft beverages made by passionate local artisans.

Check in at each stop for a chance to earn swag.

Whether you're a beer lover, wine enthusiast, or spirits connoisseur, our trail has something for everyone. Don't miss out on this incredible opportunity to taste the best craft beverages the region has to offer.

Start your adventure on our Craft Beverage Trail today!



Things to Do

Pilger Ruh Brewing

213 N Centre Street
Pottsville PA 17901
(570) 573-1989
facebook.com/pilgeruhbrew

Red Shale Ridge Vineyards

266 North Goodspring Road
Hegins PA 17938
(570) 682-3203
redshaleridgevineyards.com

Schuylkill County Wine Festival

Hegins Park
Hegins PA 17938
(570) 640-5945
schuylkillwinefestival.com

Smokey Hollow Winery

320 Zion Grove Road
Ringtown PA 17967
(570) 889-5411
facebook.com/SmokeyHollowWinery

Stoker's Brewing Company

36 Mauch Chunk Street
Tamaqua PA 18252
stokersbrewingcompany.com
(See our ad on page 11)

Stone Mountain Wine Cellars

1615 Panther Valley Road
Pine Grove PA 17963
(570) 739-4418
stonemountainwinecellars.com

Susquehanna Heartland Wine Trail

212 Rutter Road, Halifax PA 17032
(717) 896-7700
pawinetrail.com

Yuengling Brewery Museum and Gift Shop

420 Mahantongo Street
Pottsville PA 17901
(570) 628-4890
yuengling.com
(See our ad on page 5)



570.622.7700



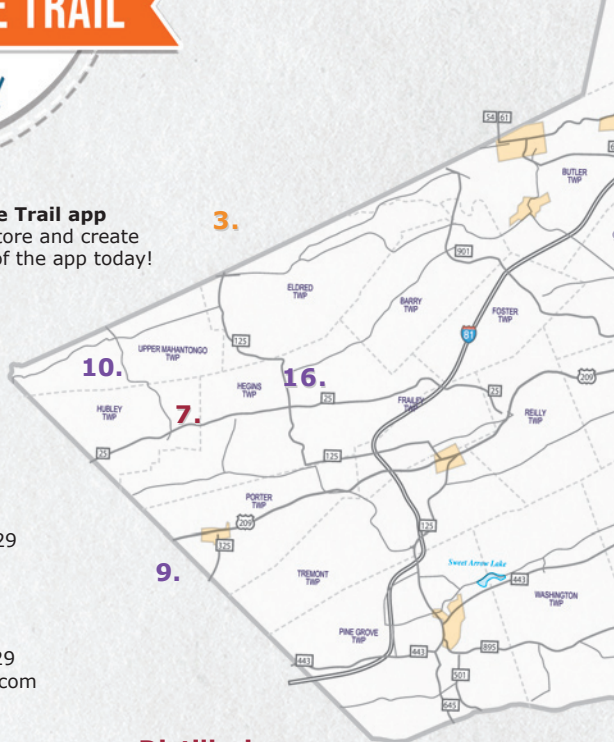
Download the **Explore Schuylkill Craft Beverage Trail app** through the App Store or Google Play store and create an account to start reaping the benefits of the app today!

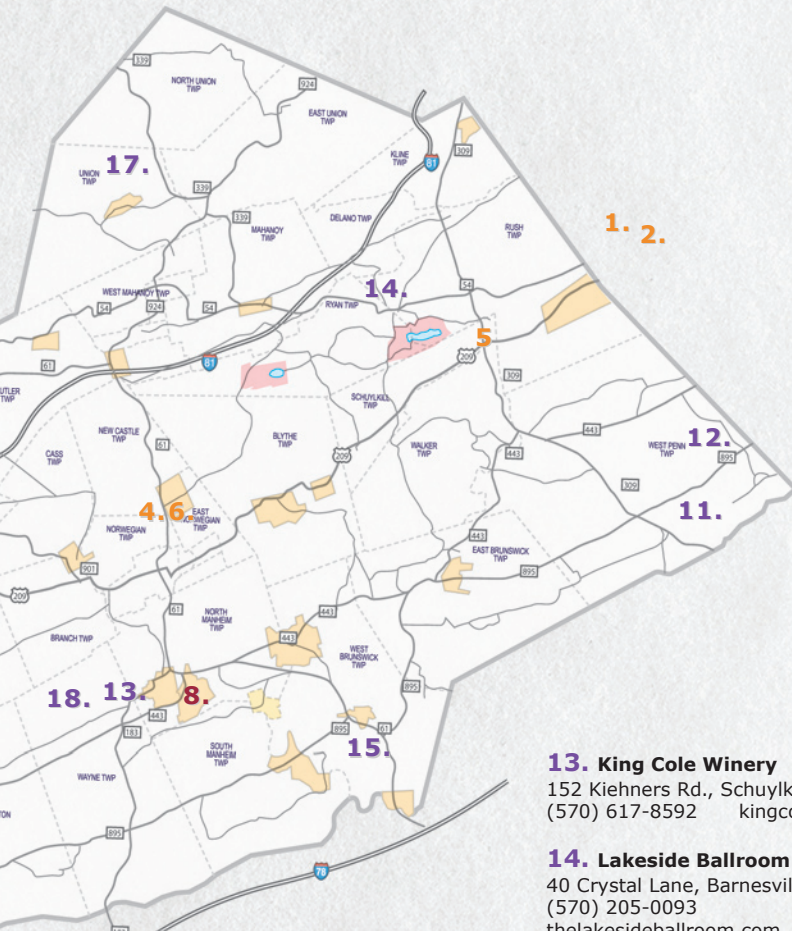
Breweries

- 1. Bright Path Brewing**
1215 North Street, Jim Thorpe PA 18229
(570) 732-9990
brightpathbrewing.com
- 2. Hairy Guys Brewing**
204 Center Street, Jim Thorpe PA 18229
(610) 714-7441 hairyguysbrewing.com
- 3. Lost Mined Brewing Company**
100 S Market Street, Shamokin PA 17872
(570) 648-1191 lostmined.com
- 4. Pilger Ruh Brewing**
213-215 N Centre St., Pottsville PA 17901
(570) 573-1989
facebook.com/pilgerruhbrew
- 5. Stoker's Brewing Company**
36 Mauch Chunk Street, Tamaqua PA 18252
stokersbrewingcompany.com
- 6. Yuengling Brewery Museum and Gift Shop**
420 Mahantongo Street, Pottsville PA 17901
(570) 628-4890 yuengling.com

Distilleries

- 7. Jack-Azz Distilling**
48 Kushwa Rd., Spring Glen PA 17978
(570) 778-1040
jackazzdistilling.square.site
- 8. Main Street Moonshine**
101 W Main St., Schuylkill Haven PA 17972
(570) 593-5835
mainstreetmoonshine.com





Wineries

- 9. Armstrong Valley Winery**
212 Rutter Road, Halifax PA 17032
(717) 896-7700
armstrongvalleywinery.com
- 10. Benigna’s Creek Vineyard & Winery**
1585 Ridge Road, Klingertown PA 17941
(570) 425-3090 bcwinery.com
- 11. Cellar Beast Winehouse**
139 Ash Circle, Andreas PA 18211
(484) 613-2136 cellarbeastwine.com
- 12. Galen Glen Vineyard & Winery**
255 Winter Mountain Drive
Andreas PA 18211
(570) 386-3682 galenglen.com

- 13. King Cole Winery**
152 Kiehners Rd., Schuylkill Haven PA 17972
(570) 617-8592 kingcolewinery.org
- 14. Lakeside Ballroom and Winery**
40 Crystal Lane, Barnesville PA 18214
(570) 205-0093
thelakesideballroom.com
- 15. Long Trout Winery**
84 Fork Mountain Road, Auburn PA 17922
(570) 366-6443 longtroutwinery.com
- 16. Red Shale Ridge Vineyards**
266 North Goodspring Rd., Hegins PA 17938
(570) 682-3203
redshaleridgevineyards.com
- 17. Smokey Hollow Winery**
320 Zion Grove Road, Ringtown PA 17967
(570) 889-5411
facebook.com/SmokeyHollowWinery
- 18. Stone Mountain Wine Cellars**
1615 Panther Valley Road
Pine Grove PA 17963
(570) 739-4418
stonemountainwinecellars.com

Things to Do

EVENTS

Schuylkill Winterfest 2025

January 18

Alvernia University

Pottsville CollegeTowne

St. Patrick's Day Parade

March 15

Pottsville

St. Patrick's Day Parade

March 22, Rain Date March 29

Girardville

Yuengling Lite Lager Jogger

April 26

Yuengling Brewery & Museum

Pottsville

Les Brown Festival

April 24-27

Various locations, lesbrownfest.org

(See our ad on page 19)

Block of Art

May 3

Pottsville

Hometown Farmers Market Craft Show

May 4

September 7

Kielbasi Festival and Heritage Day

May 17

Shenandoah

Best Kept Secrets Tour

Schuylkill County

May 29-June 14

Pottsville Film Festival

May 30-June 1

Island Park Car Show

June 8

The Island Schuylkill Haven

Schuylkill River Sojourn

June 13-20

schuylkillriver.org

Tamaqua Summerfest

June 15

Tamaqua

Schuylkill County Brew Fest

July 26

Pottsville

Johannes Schwalm Historical Association Annual Picnic

July 12 & 13

Valley View Park

(See our ad on page 19)

Things to Do

Schuylkill County Fair

July 27–August 2
Summit Station

Pottsville Cruise

August 9
Pottsville

Birds and Brew

August 9
Hawk Mountain Sanctuary

Railfest

August 23
Tamaqua

Taste of Hamburger Festival

August 30
Hamburg

Coal Miner's Heritage Festival

August 31
No. 9 Coal Mine and Museum,
Coaldale

Schuylkill County Wine Festival

August 31
Hegins Park

Hegins Valley Arts & Crafts Faire

September 20
Hegins Park

Schuylkill Haven Borough Day

September 27
Schuylkill Haven

Heritage Festival

October 12
Tamaqua

Spooky Schuylkill 5k

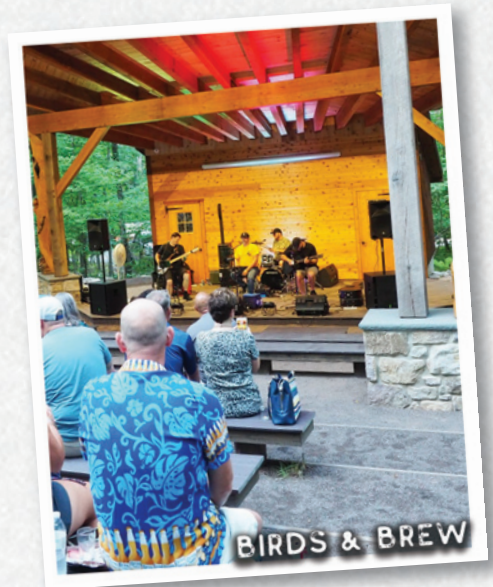
October 25
Landingville

King Frost Parade

October 26
Hamburg

Lighting of the Vineyard

November 29–30
Benigna's Creek Vineyard and Winery



Things to Do

HISTORY & HERITAGE

Annual Girardville St. Patrick's Day Parade

Downtown Girardville
facebook.com/AnnualGirardville
StPatricksDayParade/

Ashland Mother's Memorial

Hoffman Blvd and Centre Streets
Ashland PA 17921
(570) 624-7223
sacfoundation.com

Fighter's Heaven

58 Sculpt Hill Road
Orwigsburg PA 17961
(570) 968-2961
fightersheaven.com
(See our ad on page 5)

Historic Old White Church

199 Brandonville Road
Ringtown PA 17967
(570) 889-3494
theoldwhitechurch.com

Jerry's Classic Car & Collectibles Museum

394 S. Centre Street
Pottsville PA 17901
570-628-2266 (weekends) or
570-622-9510 (weekdays)
jerrysmuseum.com
(See our ad on page 4)

Johannes Schwalm Historical Association

PO Box 127, Scotland PA 17254-0127
jsha.org
(See our ad on page 19)

Les Brown Festival

lesbrownfest.org
(See our ad on page 19)

Odd Fellows Cemetery

503 W Broad St., Tamaqua PA 18252
(570) 668-4569
tamaquaoddfellows.com

Schuylkill County Courthouse

401 N. Second St., Pottsville, PA 17901
(570) 622-5570
co.schuylkill.pa.us

Schuylkill County Historical Society, Museum, and Gift Shop

305 N. Centre St., Pottsville PA 17901
(570) 622-7540
schuylkillhistory.org
(See our ad on page 9)

Schuylkill County Vietnam Veteran's Memorial

Route 61 (next to UCC Church),
Schuylkill Haven PA 17972
Donations appreciated c/o
PO Box 314, Schuylkill Haven PA 17972

Schuylkill Haven Borough Day

PO Box 443, Schuylkill Haven PA 17972
shboroughday.com

Things to Do

Stanhope Schoolhouse

122 Camp Rd., Pine Grove PA 17963
(610) 207-9600
pghs-standhopeschool.org

Tamaqua Historical Society

118 West Broad St., Tamaqua PA 18252
(610) 597-6722
facebook.com/tamaquahistoricalsociety

Yuengling Brewery Museum and Gift Shop

420 Mahantongo Street
Pottsville PA 17901
(570) 628-4890
yuengling.com
(See our ad on page 5)



April 24-27, 2025

Thursday: The Less Brown Film Festival
7:15 p.m., Pine Grove Theatre
(A film featuring music from WWII era)
Admission is FREE and open to the public.

Friday: The Les Brown Dance
6-9 p.m., Location: TBA
\$10/person
Call 717-926-2849 for tickets.

Saturday: The Les Brown Big Band Festival
Time: TBA at Williams Valley H.S. Auditorium
Admission \$10; student FREE.
Featuring music from The Williams Valley
Cool Blue Jazz Band and
local school district jazz bands.

Sunday: The Celebration of Music
3 p.m., Location: TBA
Admission is FREE and open to the public.
An afternoon of varied music from various
local instrumental and vocal ensembles.

Visit lesbrownfest.org for more information!

570.622.7700

Things To Do

MUSEUMS & TOURS

Best Kept Secrets Tours

570-728-1991

carlandsara.bestkeptsecretstour@gmail.com

bestkeptsecretstour.com

Jerry's Classic Car & Collectibles Museum

394 S. Centre Street

Pottsville PA 17901

570-628-2266 (weekends) or

570-622-9510 (weekdays)

jerrysmuseum.com

(See our ad on page 4)

No. 9 Mine & Museum

9 Dock Street (Off Route 209)

Lansford PA 18232

(570) 645-7074

no9coalmine.com

(See our ad on this page.)

Pioneer Tunnel Coal Mine

19th and Oak Streets

Ashland PA 17921

(570) 875-3850

pioneertunnel.com

(See our ad on the inside front cover.)

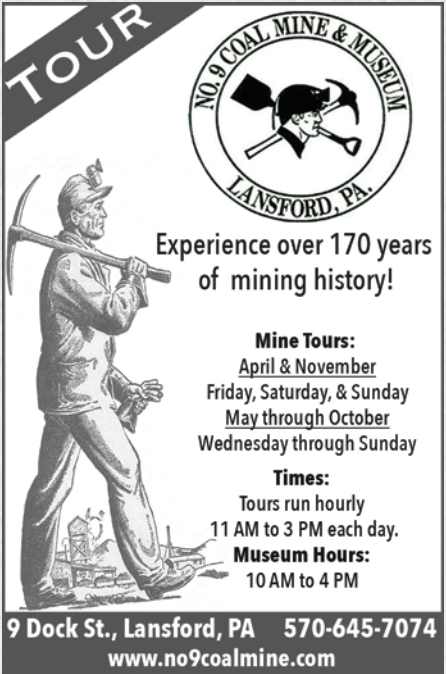
Schuylkill County Agriculture Museum

2270 Fair Road

Summit Station PA 17979

(570) 366-1989 or (570) 449-0981

facebook.com/schuylkillcountyagmuseum



TOUR

NO. 9 COAL MINE & MUSEUM
LANSFORD, PA.

Experience over 170 years of mining history!

Mine Tours:
April & November
Friday, Saturday, & Sunday
May through October
Wednesday through Sunday

Times:
Tours run hourly
11 AM to 3 PM each day.

Museum Hours:
10 AM to 4 PM

9 Dock St., Lansford, PA 570-645-7074
www.no9coalmine.com

Schuylkill County Historical Society, Museum, and Gift Shop

305 North Centre Street

Pottsville PA 17901

(570) 622-7540

schuylkillhistory.org

(See our ad on page 9)

Stanhope Schoolhouse

122 Camp Road, Pine Grove PA 17963

(610) 207-9600

pghs-standhopeschool.org

Tamaqua Railroad Station

18 North Railroad Street

Tamaqua PA 18252

(570) 668-2770

tamaquastation.org

(See our ad on page 4)

Things To Do

Yuengling Brewery Museum and Gift Shop

420 Mahantongo Street
Pottsville PA 17901
(570) 628-4890
yuengling.com
(See our ad on page 5)

RECREATION

Alchemist's Cove Games & Comics

25 W Main Street, Suite 4
Schuylkill Haven PA 17972
(570) 593-8187
facebook.com/alchemistscove
(See our ad on this page.)

The Art of Escape

62 South Tulpehocken Street
Pine Grove PA 17963
(570) 640-9551
theartofescape.com

The Chopping Block

370 S Centre Street
Pottsville PA 17901
(570) 581-8046
choppingblockpa.com

Crystal Cave

963 Crystal Cave Road
Kutztown PA 19530
(610) 683-6765
crystalcavepa.com



**Alchemist's Cove
Games & Comics**

Satisfy your gaming and hobby needs,
card games, board games, table-top
games, comics, graphic novels,
collectible figures, and much more!

Monday - Thursday Noon - 8 p.m.
Friday & Saturday Noon - 9:30 p.m.
Sunday Noon - 6 p.m.

25 W. Main St., Suite 4
Schuylkill Haven, PA 17972
570-593-8187
Follow us on Facebook

Lehigh Gorge Scenic Railway

One Susquehanna Street
Jim Thorpe PA 18229
(570) 325-8485
lgsry.com

Strike Zone Alleys

2501 West End Avenue
Pottsville PA 17901
(570) 622-8740
strikezonealleys.com

Wanamaker, Kempton & Southern Railroad

42 Community Center Drive
Kempton PA 19529
(610) 756-6469
kemptontrain.com

Things To Do

THE GREAT OUTDOORS

Dustin's Adventureland

Edgar Lewis Street
Minersville PA 17954
(570) 527-6040
dustinsadventureland.org

Famous Reading Outdoors

200 Mahantango Street
Pottsville PA 17901
(570) 573-1038
readingoutdoors.com

Heisler's Dairy Bar

743 Catawissa Rd., Tamaqua PA 18252
(570) 668-3399
heislersdairy.com

Hidden Valley Golf Course

1753 Panther Valley Road
Pine Grove PA 17963
800-428-4631 or (570) 739-4455
hidden.distinctgolf.com

Locust Lake State Park

Locust Lake Rd., Barnesville PA 18214
(570) 467-2772
dcnr.state.pa.us/stateparks/
findapark/locustlake/

Mountain Valley Golf Course

1021 Brockton Mountain Drive
Barnesville PA 18214
(570) 467-2242
mtvalleygolf.com
(See our ad on the inside back cover)

Rausch Creek Trailriders

183 Bear Valley Road
Valley View PA 17983
(570) 682-1075
rauschcreekracing.com
(See our ad on page 23)

Schaeffer's Harley-Davidson Sales and Service

1123 Brick Hill Road
Orwigsburg PA 17961
(570) 366-0143
schaeffershd.com
(See our ad on page 23)

Schaeffer's MotorSports

1194 Centre Turnpike
Orwigsburg PA 17961
(570) 968-4336
schaeffersmotorsports.com
(See our ad on page 23)

Swatara State Park

1450 Suedberg Road
Pine Grove PA 17963
(717) 865-6470
dcnr.state.pa.us/stateparks/
findapark/swatara/

Sweet Arrow Lake County Park

108 Clubhouse Road
Pine Grove PA 17963
(570) 527-2505
sweetarrowlakepark.com

Things To Do

Tuscarora State Park
 687 Tuscarora Park Road
 Barnesville PA 18214
 (570) 467-2404
[dcnr.state.pa.us/stateparks/
 findapark/tuscarora/](http://dcnr.state.pa.us/stateparks/findapark/tuscarora/)

Valley View Park Association
 524 Gap Street, Valley View PA 17983
 (570) 573-9467
facebook.com/valleyviewparkpa

Whitewater Rafting Adventures
 101 W. Adventure Trail Road
 Nesquehoning PA 18240
 (570) 669-9127 or (800) 876-0285
adventurerafting.com

RAUSCH CREEK TRAILRIDERS

IF YOU LOVE OFF-ROAD... YOU'LL LOVE RAUSCH CREEK!

For Bike, ATV & UTV Riders of All Ages

8,500 Acres of Trail for Year-Round Riding
 *Membership Required
 *Camping Available Too!

Easy interstate access from all major north-eastern cities...
 2 hours from Philadelphia and New York City,
 2.5 hours from Baltimore.

570.682.1075
 GPS Coordinates
 40.614003, 76.564993

www.RAUSHCREEKRACING.com

Schaeffer's HARLEY-DAVIDSON

YOUR ONE STOP HARLEY-DAVIDSON SHOP

FAMILY OWNED SINCE 1967

1123 BRICK HILL ROAD, ORWIGSBURG PA 17961
 SCHAEFFERSHD.COM 570-366-0143

SCHAEFFER'S MOTORSPORTS

1194 CENTRE TURNPIKE, ORWIGSBURG PA 17961
 SCHAEFFERSMOTORSPORTS.COM 570-968-4336

can-am

FOX

KTM

Dining

FINE

The Brickhouse

705 West Market Street
Orwigsburg PA 17961
(570) 366-5220
bhgrill.com

(See our ad on page 25)

Summit View Restaurant

934 South Route 183
Schuylkill Haven PA 17972
(570) 754-5421
summitviewrestaurant.net

Tamaqua Station Restaurant

18 N. Railroad Street
Tamaqua PA 18252
(570) 668-3800
facebook.com/tamaquastationrestaurant

FAMILY

3 C's Family Restaurant

2212 Centre Turnpike, Route 61
Orwigsburg PA 17961
(610) 562-5925
3csfamilyrestaurant.com
(See our ad on this page.)

Buddy's Log Cabin Family Restaurant

97 Tremont Rd., Pine Grove PA 17963
(570) 345-8253
buddyslogcabin.com
(See our ad on page 25)

Friedensburg Country Restaurant

1305 Long Run Road, Route 443
Friedensburg PA 17933
(570) 739-0008
fcrest.com

Heisler's Dairy Bar

743 Catawissa Rd., Tamaqua PA 18252
(570) 668-3399
heislersdairy.com

CASUAL

Eagle Tavern

112 East Norwegian Street
Pottsville PA 17901
(570) 581-8406
eagletavernpottsville.com



3C's Family Restaurant
Celebrating 51 Years!
Award Winning Breakfast
- Voted #1 Since 2003

North of Port Clinton, South of Deer Lake
Outside dining with a scenic view on the beautiful Schuylkill River.

"The Gathering Place of Friends & Family"

- Business Breakfasts/ Luncheons & Dinners
- Private & Holiday Parties
- Fundraisers
- After Hours Booking and Evening Dining. Check Facebook for details.

(610) 562-5925
Wednesday - Friday
7 am - 2 pm
Saturday - Sunday
7 am - 2 pm
Closed Monday & Tuesday

Email us @
3csfriends@gmail.com

Order online @
3csfamilyrestaurant.com

Lost Mined Brewing Company
 100 S Market Street
 Shamokin PA 17872
 (570) 648-1191
 lostmined.com

Main Street Moonshine
 101 W Main Street
 Schuylkill Haven PA 17972
 (570) 593-5835
 mainstreetmoonshine.com
 (See our ad on page 10)

May's Drive In
 2105 Centre Street
 Ashland PA 17921
 (570) 875-4601
 maydrivein.com

Established 1978

BUDDY'S LOG CABIN

FAMILY RESTAURANT



Homestyle Cooking – Breakfast, Lunch, and Dinner



- Our country style breakfast is served all day!
- Featuring a Kid's Menu
- Catering Available

"Our authentic log cabin features an old fashioned fireplace and a salad bar in an old logging sleigh"

www.buddyslogcabin.com Find us on 

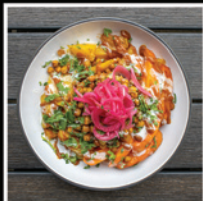
(570) 345-8253
 97 Tremont Road • Pine Grove, PA 17963

THE BRICKHOUSE

EST. 2006



Life Is Good. Eat Well.



Open Tues - Sun. Closed Monday Happy Hour Sun - Thurs 4-6pm

Catering Available

705 W Market St Orwigsburg, PA 570.366.5220 bhgrill.com

Dining

Red Lion Café

697 Deturksville Road
Pine Grove PA 17963
(570) 345-4353
redlioncafe.biz

Roman Delight

1240 Centre Turnpike
Orwigsburg PA 17961
(570) 366-1914
carmelosromandelight.com

Roma Pizzeria and Restaurant

116 W Market Street
Pottsville PA 17901
(570) 628-5551
romapizzapottsville.com
(See our ad on this page)

Subway

314 N Centre St., Pottsville PA 17901
(570) 628-5070
order.subway.com

Villa on Bulls Head

141 Bulls Head Road
Pottsville PA 17901
(570) 581-8759
facebook.com/Villaonbullshead

Vito's Coal Fired Pizza & Restaurant

Coal Creek Plaza, 400 Terry Rich Blvd.
St. Clair PA 17970
(570) 429-1888
vitoscoalfiredpizza.com
(See our ad on page 27)

The Washington Hotel

201 Sunbury Street
Minersville PA 17954
(570) 544-3313
facebook.com/Washingtonhotel

The Wooden Keg Tavern

1 W Caroline Avenue
St. Clair PA 17970
(570) 429-1909
woodenkegtavern.com

Yocko's

18 N Delaware Avenue
Minersville PA 17954
(570) 544-5442
Find us on Facebook

Roma

PIZZERIA AND RESTAURANT
116 West Market St., Pottsville
570-628-5551
www.romapizzapottsville.com



Our hand built organic oven core is made entirely from "Terre La Blanche", or "White Earth". The 100% natural and organic clay is taken out of the earth and fired to withstand 2900°. Terre La Blanche has been used in Europe for hundreds of years for artisan ovens.

*Apps for iPhone & Android users •
Online Ordering •
Eat In or Take Out • Daily Specials
Create your own wood fired pizza*

CATERING

Hess Catering Inc.

1 River & St. John Streets
Schuylkill Haven PA 17972
(570) 385-3578
hesscatering.com

ScottDee's Custom Catering

376 Hill Road
Hegins PA 17938
(570) 764-2843
Facebook.com/ScottDeesCatering

COFFEE SHOPS & SWEETS

Bowers Donuts

Dunkin' Pottsville
413 Claude A Lord Blvd
Pottsville PA 17901
(570) 622-9842
Dunkin' Pottsville
3 Westwood Center
Pottsville PA 17901
(570) 622-3130
Dunkin' St. Clair
400 Terry Rich Blvd
St. Clair PA 17970
(570) 429-0104

C & C Candies and Country Store

1305 Long Run Road
Friedensburg PA 17933
(570) 739-2963
cccandies.com

VITO'S COAL FIRED
Pizza and Restaurant

Whether you stop in for a unique pizza experience, one of our delicious dinners or awesome appetizers, you will be sure to find something to please your palate!

Relax at our beautiful galvanized steel bar. Watch the game on one of our four widescreen televisions or enjoy the sounds of talented musicians and songwriters. Check our website for the entertainment schedule.

Coal Creek Plaza, St. Clair, PA
570-429-1888
www.vitoscoal-firedpizza.net

Hope & Coffee

137 Pine Street
Tamaqua PA 18252
(570) 225-7600
hopeandcoffee.org

Momma Millie's Bakery

216 North Centre Street
Pottsville PA 17901
(570) 622-1022

Shopping

SHOPPING MALLS

Fairlane Village Mall

7211 Fairlane Village Mall
Pottsville PA 17901
(570) 429-1563
shopfairlanevillage.com

HEALTH

Peace Frog Natural

49 Ann Street
Pottsville PA 17901
(570) 429-0757
peacefrognatural.com
(See our ad on page 31)

FARMER'S MARKETS

Hometown Farmers Market,

125 Mahanoy Avenue, Route 54
Tamaqua PA 18252
(570) 668-2630
hometownfarmmkt.com
(See our ad on page 32)

Raven's Nest Salt Room

392 W Apple Street
Ringtown PA 17967
(570) 875-9328
ravensnestsaltroom.com
(See our ad on page 29)



Forget Me Not
FLORIST
SINCE 1926

READERS' CHOICE
REPUBLICAN HERALD
2024

We have an expansive array of flowers, plants, and gifts to suit any occasion. Our experienced staff can assist you to create a one-of-a-kind gift you are sure to love!

Call 570-366-2619 or order online 24/7 at:
www.OrwigsburgFlorist.com

159 E. Adamsdale Rd. Orwigsburg, PA 17961

RAVEN'S NEST SALT ROOM



570-875-9328

392 West Apple Street
Suite 4 (Rear of Building)
Ringtown, Pa 17967

www.ravensnestsaltroom.com

Taking care of your mind, body & soul

The Raven's Nest is a Salt Therapy Spa and Wellness destination. We have a custom-built salt therapy room that takes you to a beautiful lakefront mountainscape with a star-filled sky where you can unwind, relax and destress.

Salt Therapy is safe for most anyone.
All-natural remedy

- *Improves lung function * asthma * allergies
- *Strengthens the upper respiratory immune system
- *Cleanses and sanitizes the nasal and throat airways
- *Improves skin condition * acne * eczema * psoriasis
- *Improves sleep * snoring * sleep apnea
- *Clears airways of pollutants * sinus and chest congestion



Experience a session yourself!
Book a session today and
Save 20% using code explore



TREE OF LIFE SHOPPE

come grow with us.

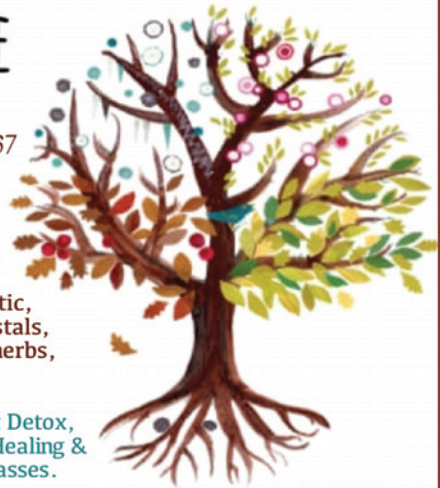
392 West Apple Street, Suite 3, Ringtown, PA 17967

570-741-3574

Largest Metaphysical store in area.

We carry a wide range of metaphysical, holistic, new age and spiritual items for your path. Crystals, journals, candles, books, clothing, tapestries, herbs, essential oils and more

Services: Reflexology, Ear Candling, Ionic Foot Detox, Reiki, Crystals Healing, Cranial Sacral, Sound Healing & Sound Baths, Meditation groups, and yoga classes.



Check our website and social media for our services and events!

www.treeoflifeshoppe.com

\$10 off any \$50 order online use code explore or mention in store *limit one per customer



Shopping

Schuykill YMCA

520 N Centre Street
Pottsville PA 17901
(570) 622-7850
schuykillymca.org

HOME & GARDEN

Forget Me Not Florist

159 East Adamsdale Road
Orwigsburg PA 17961
(570) 366-2619
orwigsburgflorist.com
(See our ad on page 28)

Lessie's Garden Greenhouse & Gift Shop

2 Park Street, Agricultural Park
Pottsville PA 17901
(570) 622-7368
avenuesofpa.org

Werner Ace Lumber Company

29 South Tulpehocken Street
Pine Grove PA 17963
(570) 345-2561
40 N Sillyman Street
Cressona PA 17929
(570) 385-2046
wernerlumber.com

Hydrangea Cottage Tea & Gifts

409 West Market Street, Pottsville | 570.728.2324

Easy parking - put your four-way flashers on for 15-minute FREE parking during the week.
Parking is FREE on Saturday & Sunday!

Join us for Afternoon Tea!

Usually held the third full weekend of each month.
Call for more information, menu, and to make reservations.

Our gift shop is full of great items including:

- Loose leaf & Bagged Teas, Ground & whole bean Coffee
- Soup, Dip, & Scone Mixes
- Books, Candles, FreshCut floral Cards
- Honey House Lotions & Goat Milk Soap
- Tiffany style Lamps & Window Medallions
- Seasonal Décor & Meadowbrooke Gourds
- Featuring artwork by Local Artists

Regular Hours: Tuesday - Friday 10:00 am-5:00 pm,
Saturday 10:00 am-4:00 pm. Closed Sunday & Monday



SPECIALTY SHOPPING

Alchemist's Cove Games & Comics

25 W Main Street, Suite 4,
Schuylkill Haven PA 17972
(570)593-8187
facebook.com/alchemistscove
(See our ad on page 21)

Drasdis and Son Clothier

125 W Market Street
Pottsville PA 17901
(570) 573-5409
drasdis.com

Hope Hill Lavender Farm

2375 Panther Valley Road
Pottsville PA 17901
(570) 617-0851
HopeHillLavenderFarm.com
(See our ad on page 7)

Hydrangea Cottage Tea & Gifts

409 W Market Street
Pottsville PA 17901
(570) 728-2324
facebook.com/hydrangeacottage
(See our ad on page 30)

Peace Frog

heydude

CAROLINA
Built For Work.

SHOP LOCAL

BIRKENSTOCK
MADE IN GERMANY

UGG
AUSTRALIA

Vitamins,
Supplements,
Shoes, Gifts &
more

www.peacefrognatural.com 49 Ann St., Pottsville, PA (570) 429-0757

Shopping

Ken's Tire

200 Pottsville Street
Cressona PA 17929 (570) 385-1298
1420 Laurel Blvd., Pottsville PA 17901
(570) 622-8999
615 Altamont Blvd., Frackville PA
17931 (570) 874-4644
kenstires.com

Kowalonek's Kielbasy Shop

332 South Main Street
Shenandoah PA 17976
(570) 462-1263
kielbasy.net

Marguerite's Antiques & Collectibles

8 South Centre Street
Pottsville PA 17901
(570) 573-3275
margueritesantiques.com

Miller Charm Farm

137 St. Peter's Road
Tamaqua PA 18252
(570) 386-4387
millercharm farms.com

Murphy Jewelers

115 W Market Street, Pottsville PA
17901 (570) 622-3136
16 Jetson Drive, Hamburg, PA 19526
(610) 562-2528
Lehigh Valley Mall, Whitehall, PA
18052 (610) 791-5200
murphyjewelers.com

Hometown Farmers Market



Located at
125 Mahanoy Avenue,
Route 54,
Tamaqua, PA 18252

570-668-2630

The Market carries a wide variety of items such as fresh local produce, fresh meats, new and used collectibles, clothing, flowers, shrubbery, tools, homemade baked goods.

Free parking is available for our customers.

**Open Every Wednesday
8AM - 7PM Year Round**

Open the Monday before Christmas & New Years
www.hometownfarmmkt.com

Pottsville Provision

415 N 7th Street
Pottsville PA 17901
(570) 622-2231
Find us on Facebook

Schaeffer's Harley-Davidson Sales and Service

1123 Brick Hill Road
Orwigsburg PA 17961
(570) 366-0143
schaeffershds.com
(See our ad on page 23)

Schaeffer's MotorSports

1194 Centre Turnpike
Orwigsburg PA 17961
(570) 968-4336
schaeffersmotorsports.com
(See our ad on page 23)

Tree of Life Shoppe

392 W Apple Street
Ringtown PA 17967
(570) 741-3574
treeoflifeshoppe.com
(See our ad on page 29)

SWIT Sports Cards & Collectibles

Cressona Mall 1544 Rt 61 S,
Suite 6191, Pottsville PA 17901
(570) 385-3553
switsport.com

Vintage 61 Storehouse

1070 Centre Turnpike
Orwigsburg PA 17961
(570) 728-4466
vintagethisrepurposethat.com
(See our ad on this page.)

Tink's Antiques

28 S Railroad Street
Tamaqua PA 18252
(570) 449-2094
facebook.com/tinksantiques



RE•PURPOSED
REFINED &
REDEFINED

Over 30 vendors featuring handmade,
vintage, antique and collectable items!
20,000 sq. ft. of shopping!

Join us for our Outdoor Markets, the 2nd
Saturday of every month April through October.

Wednesday - Friday 10-5, Saturday & Sunday 11-4



1070 Centre Turnpike, Orwigsburg 570 968 4720 vintage61storehouse.com

Ways to Stay with Us

B&Bs/INNS/RENT BY OWNERS

Bischoff Inn

320 Lafayette Street
Tamaqua PA 18252
(570) 810-2956
bischoffinn.com

Grier City Schoolhouse

190 Grier Avenue
Barnesville PA 18214
(570) 810-2956
griercityschoolhouse.com

The Hill House

201 Howard Ave.
Pottsville PA 17901
(570) 449-9922
airbnb.com/h/pottsville-hill-house
(See our ad on this page)

The Inn at Birch Wilds

3236 W Lizard Creek Road
Lehighton PA 18235
(570) 818-4433
innatbirchwilds.com

Kaier Mansion Bed & Breakfast

729 East Centre Street
Mahanoy City PA 17948
(570) 773-3040
kaiermansion.com

The Maid's Quarters Bed, Breakfast, and Tea Room

402 South Centre Street
Pottsville PA 17901
(484) 223-9497
themaidsquartersbedandbreakfast.com

Short Term/Airbnb
3 Bedrooms
Full Kitchen
Off Street Parking
Yuengling Brewery
Minutes Away

THE HILL HOUSE
EST. 1886
201 HOWARD AVE.

Experience the Historic Charm of Pottsville

SCAN for More Information & Availability

@Pottsville_Hill_House

The advertisement features a dark background with a white sign that reads 'THE HILL HOUSE EST. 1886 201 HOWARD AVE.' Below the sign is a QR code and the text 'SCAN for More Information & Availability'. To the right of the QR code is a photo of the building's exterior. Below the QR code is another photo of the building's exterior, showing a street view with American flags hanging from the porch.

Ways to Stay with Us

Mimm's Country Inn

123 W Rausch's Road
Orwigsburg PA 17961
(570) 573-3003
[airbnb.com/rooms/23326715](https://www.airbnb.com/rooms/23326715)

The Stone House Bed and Breakfast

16 Dock Street
Schuylkill Haven PA 17972
(570) 385-2115
[thestonehousebnb.com](https://www.thestonehousebnb.com)

The Village at Houser's Crossing

34 Carbon Lane
Tamaqua PA 18252
(610) 597-6052
[houserscrossing.com](https://www.houserscrossing.com)

CAMPGROUNDS

Camp-A-While Campground

1921 East Main Street
Hegins PA 17938
(570) 682-8696
[campawhilepa.com](https://www.campawhilepa.com)
(See our ad on this page)

Christmas Pines Campground

450 Red Church Road
Auburn PA 17922
(570) 366-8866
[christmaspines.com](https://www.christmaspines.com)

Echo Valley Campground

52 Camp Road
Tremont PA 17981
(570) 695-3659
[echovalleycamp.com](https://www.echovalleycamp.com)



1921 E. Main Street
Hegins, PA 17938

570-682-8696

45 Minutes from Hershey,
Cabela's, and Knoebels



Swimming Pool
Country Store
& RV Parts
Full Hookups
Playground
Propane Sales

Fishing Pond
Hiking
Laundry
Pull-thrus
Pet Friendly
& Game Room

Weekend Activities & more!

40 Miles North of Harrisburg
1/2 miles West of I-81, Exit 112 on Rt. 25

www.campawhilepa.com

Ways to Stay with Us

CAMPGROUNDS

Lakewood Park Campground

26 Park Avenue
Barnesville PA 18214
(570) 285-8026
lakewoodparkcampground.com
(See our ad on this page)

Laurel Lake Campsites

3480 Summer Valley Road
New Ringgold PA 17960
(570) 386-5301
facebook.com/laurellakecampsites

HOTELS/MOTELS

Baymont Inn & Suites

419 Suedberg Road
Pine Grove PA 17963
(570) 915-0782
wynndhamhotels.com/baymont

Comfort Inn & Suites

1252 Morea Road
Barnesville, PA 18214
(570) 773-5252
comfortinnbarnesville.com
(See our ad on the inside back cover)



63 Acres & 10 Acre Lake
All sites are Full-Hookup
Cabin Rentals All Year!

- ✓ Only 3 miles off I-81 Exit 131A
- ✓ Pull-thru & back-in sites
- ✓ Free WIFI / Cable TV
- ✓ Catch & release fishing
- ✓ Paddle boats & kayaks
- ✓ Coin laundry
- ✓ Propane refills / firewood
- ✓ Playground & GaGa Ball
- ✓ Weekend Activities
- ✓ Multi-day discounts
- ✓ Pet Friendly RV/tent sites
- ✓ Two State Parks within 5 mi

New Store/Dog Park coming in 2025

26 Park Ave
Barnesville, PA 18214
570-285-8026



CATALPA
grove

Weddings & Private Events

63 acres / 10 acre lake
200 person capacity
Open All Year!

- ✓ Exclusive access
- ✓ Creekside
- ✓ Use any caterer / BYOB
- ✓ Outdoor firepit
- ✓ Air conditioned & heated
- ✓ Indoor gas fireplace
- ✓ Wedding party suite
- ✓ Accent lighting / projector
- ✓ Elevated stage
- ✓ On-site ceremonies
- ✓ Great history
- ✓ Onsite cabin rentals
- ✓ See more photos online!
- ✓ And more!

www.lakewoodparkpa.com

Ways to Stay with Us

Country Inn and Suites

100 Keystone Blvd. East
Pottsville, PA 17901
(570) 544-5201
www.choicehotels.com
(See our ad on this page)

Hampton Inn Pine Grove

481 Suedberg Road
Pine Grove PA 17963
(570) 345-4505
hamptoninn3.hilton.com/en/index.html

Holiday Inn Express

958 Schuylkill Mall Road
Frackville PA 17931
(570) 874-1700
hiexpress.com/frackvillepa
(See our ad on the back cover)

Pottsville Motor Inn

480 N. Claude A. Lord Blvd (Rt 61)
Pottsville PA 17901
(570) 622-4917



And you thought
STAYING HERE
couldn't get any better.

Step into the newly renovated Country Inn & Suites Frackville to discover a warm fireside lobby, friendly, professional staff and spacious guest rooms. During your stay, you have access to free high-speed Internet access, a well-equipped fitness center, a complimentary, hot Be Our Guest Breakfast buffet and a heated indoor pool.



Country Inn & Suites by Radisson Frackville (Pottsville)
100 Keystone Boulevard East, Pottsville, PA 17901
(570) 544-5201
www.choicehotels.com

Services & Community

ANIMAL SERVICES

Hillside SPCA
51 SPCA Road
Pottsville PA 17901
(570) 622-7769
hillsidepca.com

AUTOMOTIVE

Kline Brothers Auto Body Shop
1616 McBarron Street
Pottsville PA 17901
(570) 622-3678
klinebrothersbodyshop.com

BUILDING/CONSTRUCTION

L & K Construction, Inc.
1 Field of Dreams Driv
Pottsville PA 17901
(570) 385-4154
lkci.net

Pioneer Pole Buildings, Inc.
716 South Rt. 183
Schuylkill Haven PA 17972
888-448-2505
pioneerpolebuildings.com

CLEANING SERVICES

Pristine Green Cleaning
Service LLC
218 Wynonah Drive
Auburn PA 17922
(570) 516-5306
pristinecleanpottsville.com

COLLEGES/UNIVERSITIES

Alvernia University
Pottsville CollegeTowne
500 Progress Avenue
Pottsville PA 17901
(570) 385-2382
alvernia.edu/Pottsville

Penn State Schuylkill
200 University Drive
Schuylkill Haven PA 17972
(570) 385-6252
sl.psu.edu

COMMUNITY ORGANIZATIONS

Downtown Shenandoah Inc.
116 North Main Street
Shenandoah PA 17976
(570) 462-2060
downtownshenandoah.com

Services & Community

Frackville Business and
Professional Association
PO Box 261
Frackville PA 17931
fbpa.org

Greater Schuylkill Haven Area
Business Association
PO Box 153
Schuylkill Haven PA 17972
(570) 385-2115
facebook.com/TheGSHABA

Lasting Legacy for Pottsville
216 South Centre Street
Pottsville PA 17901
(570) 624-7223
sacfoundation.com

Our Town Foundation
335 State Street
Hamburg PA 19526
(610) 562-3106
hamburgpa.org

Penn State Master Gardeners
Schuylkill County Cooperative
Extension
1202 Ag Center Drive
Pottsville PA 17901
(570) 622-4225
extension.psu.edu/schuylkill-county

Pottsville Commission on Tourism
One South 2nd Street
Pottsville PA 17901
(570) 628-4647
downtownpottsville.org

Pottsville Lions Club
322 North 9th Street
Pottsville PA 17901
(570) 622-7000
facebook.com/PottsvilleLionsClub

ADVOCACY | NETWORKING | DEVELOPMENT

DO BUSINESS HERE

SCHUYLKILL
CHAMBER OF COMMERCE

AGWAY

www.schuylkillchamber.com

Services & Community

COMMUNITY ORGANIZATIONS

Schuylkill Chamber of Commerce
One Progress Circle, Ste. 201
Pottsville PA 17901
(570) 622-1942 | 800-755-1942
schuylkillchamber.com
(See our ad on page 39)

Schuylkill Connects
11 E Main Street
Schuylkill Haven PA 17972
(570) 622-6097
schuylkillconnects.com

Schuylkill Conservation District
1206 Ag Center Road
Pottsville PA 17901
(570) 622-3742
schuylkillcd.org

Schuylkill County Conservancy
PO Box 318, Orwigsburg PA 17961
(570) 391-3326
ourschuylkill.org

Schuylkill Economic Development
Corporation
One Progress Circle, Ste. 200
Pottsville PA 17901
(570) 622-1943
sed-co.com

Schuylkill Haven Island Park
333 Center Avenue
Schuylkill Haven PA 17972
(570) 385-2841
havenrec.com

Schuylkill River Greenway Association
140 College Drive, Pottstown PA 19464
(484) 945-0200
schuylkillriver.org
(See our ad on page 41)

Tamaqua Area Chamber of Commerce
PO Box 56, Tamaqua PA 18252
(570) 668-1880
tamaqua.net

Veterans of the Vietnam War
Memorial on Rt 61, Schuylkill Haven
(570) 449-6067

EVENT VENUES

Arrow Studio & Events
316 N Centre Street, Pottsville PA 17901
(570) 221-5052
arrowstudioandevents.com

Catalpa Grove at Lakewood Park
26 Park Avenue, Barnesville PA 18214
(570) 578-9591
catalpagrovepa.com
(See our ad on page 36)

Services & Community

HEALTH & EMERGENCY

9-1-1, In case of Emergency for Ambulance, Fire or Police. Providing Emergency Coverage for all of Schuylkill County.

Clinical Outcomes Group
One South Second Street
1st Floor
Pottsville PA 17901
(570) 628-6990
coginc.org

LIBRARY

Pottsville Free Public Library
215 W Market Street
Pottsville PA 17901
(570) 622-8880
pottsvillelibrary.org

MEDIA

Eastern Press Quality Printing
2067 West Market Street
Pottsville PA 17901
(570) 622-7370
easternpressqualityprinting.com



**SCHUYLKILL RIVER
GREENWAYS**



kayaking, biking, hiking and more...
**Explore the historic watershed and
iconic Schuylkill River Trail with us!**

Services & Community

REAL ESTATE

Diana Gabardi, Realtor
Berkshire Hathaway Home Services
Homesale Realty
384 Centre Avenue
Schuylkill Haven PA 17922
(570) 449-3647 or
(570) 385-3456 x106
facebook.com/RealEstatebyDiana

Joan Goodman Real Estate
38 East Centre Street
Mahanoy City PA 17948
(570) 773-1959
joangoodmanrealestate.com

TRANSPORTATION

AAA Schuylkill County
340 South Centre Street
Pottsville PA 17901
(570) 622-4991
schuylkill.aaa.com

Evans Delivery Company
100-110 West Columbia Street
Schuylkill Haven PA 17972
(570) 385-9048
evansdelivery.com



Massage Therapy & Bodywork Services

- ~Swedish Massage ~Therapeutic Massage
- ~Deep Tissue Massage ~Hot Stone Massage
- ~Manual Lymphatic Drainage ~Reflexology
- ~Reiki ~Chakra Balancing
- ~Salt Room Massage & Bodywork
- ~Spa Packages ~& More

BODYWORK

Where Healing and Relaxation Meet



570-212-9191
392 W Apple St,
Suite 3 (Rear Entrance)
Ringtown, PA 17967

www.PureRoseBodywork.com

*Check out the website & social media
for the latest specials & events!*

Save \$10 with code: Explore
-Discount applied at checkout * Limit one per person

Relax, Rejuvenate & Realign

- *Combat Stress *Reduce Anxiety
- *Reduce Muscle Tension & Pain
- *Increase Range of Motion & Joint Mobility
- *Reduce Swelling & Inflammation
- *Stimulate Parasympathetic System
- *Boost Immune Function
- *Reduce Blood Pressure *Improve Sleep
- *Reduce Headache/Migraine Frequency
- *Stimulate Lymphatic Movement
- *Increase Circulation
- *Balance Energy *Align Chakras

MSC015396

Services & Community

Schuylkill County Airport Authority
240 Airport Road
Pottsville PA 17901
(570) 544-6002
schuylkillregionalairport.com

Schuylkill Transportation System
Union Station Building
300 South Centre Street
Pottsville PA 17901
(570) 429-2701
go-sts.com
(See our ad on this page)

Wilkes-Barre/Scranton
International Airport-AVP
100 Terminal Drive
Avoca PA 18641
(570) 602-2000
Flyavp.com

WELLNESS & BEAUTY

BeeHive Hair Salon
301 Mahantongo Street
Pottsville PA 17901
(570) 622-2558

Pure Rose Bodywork
392 W Apple St
Suite 3
Ringtown, PA 17967
(570) 212-9191
purerosebodywork.com
(See our ad on page 42)

**Buy.
Activate.
Ride.**

Use Token Transit to buy bus passes
and board with your phone.

STS
We're here to get you there.

Scan the
QR
Code!

STS Token Transit

Download on the
App Store

GET IT ON
Google Play

©2016 Schuylkill County Airport Authority. All rights reserved. App Store and Google Play are trademarks of Apple Inc. and Google Inc. respectively. All other trademarks are the property of their respective owners.

www.go-sts.com

Hiking in Schuylkill County

Visit www.schuylkill.org for trail accesses and GPS information.

1. Appalachian Trail - (304) 535-6331
www.appalachiantrail.org

2. Historic Tow Path Trail - Located along the Schuylkill River in Port Clinton. A two-mile riverbank trail.

3. Bear Creek Environmental Area - Two miles of environmental interpretive trails through a variety of scenic wildlife habitats.

4. Frog Hollow Environmental Education Center - Located near Friedensburg, just off Rt. 443.

5. Locust Lake State Park - Features three hiking trails, which are three-quarter, two and four miles long. (570) 467-2772

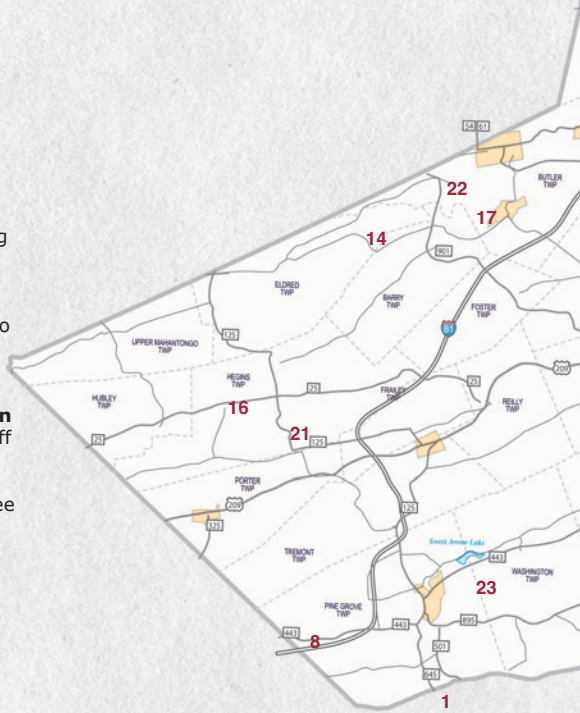
6. Tuscarora State Park - Features six hiking trails, five under 1-mile and one 14-mile trail. (570) 467-2404

7. Pottsville Bike/Hike Trail, Pottsville Walking Tour and General George Joulwan East Side Park

8. Swatara State Park - Located off Exit 100 of I-81 (Rt. 443-Pine Grove). The Park features a 2-mile hiking trail. (717) 865-6470

9. Irish Flats Trail - parallels the Schuylkill River in Schuylkill Haven. Located at the end of the Broadway Street Bridge off Dock Street (Rt. 443). Flat hike affording scenic views of the river.

10. Landingville Marsh - A flat loop trail alongside the Schuylkill River that includes part of the John Bartram Trail and the foundation for the oldest transportation tunnel in America. Located south of Landingville and its community park.

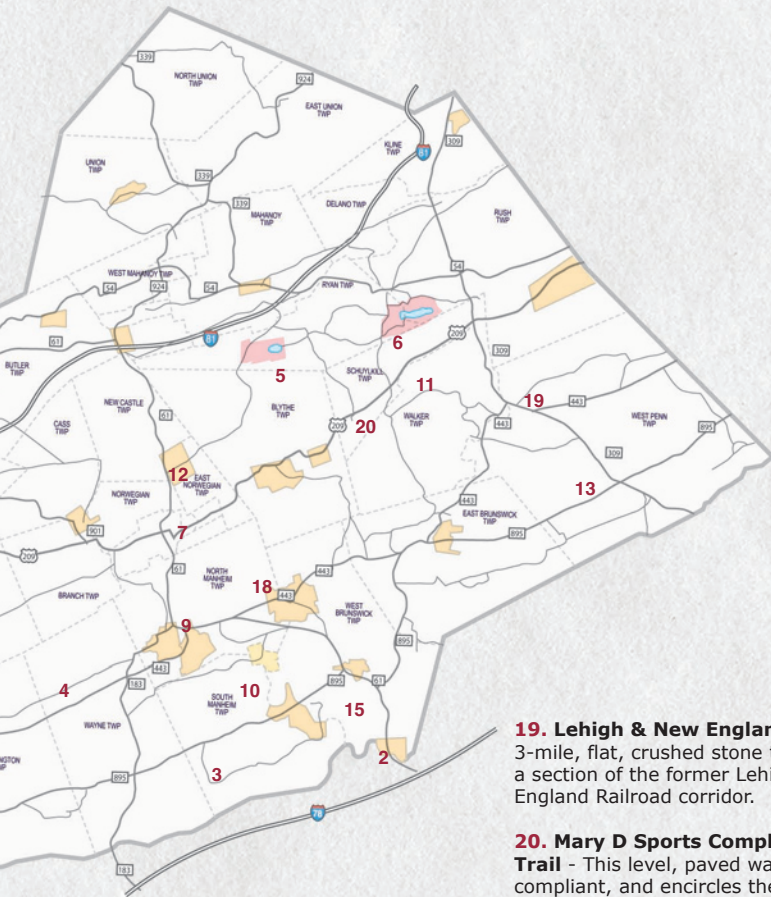


11. Schuylkill Valley Trail - Parallels Rt. 209 for eight miles from Tamaqua to Middleport. Flat to gently rolling landscape that features scenic views of the surrounding mountains.

12. Minersville Walking Path - A short but scenic and paved path in the Fourth Street Recreation Complex.

13. West Penn Park Trail - The park is located off Rt. 309 on Zions Stone Church Road in West Penn Township. The short path crosses a small covered bridge into the forest and ends in a fun playground.

14. Conrad Weiser State Forest / Taylorsville Region - Located just off Taylorsville/Bull roads. (570) 875-6450



15. John Bartram Trail - This trail is under construction with the main stem running from Port Clinton through Pottsville to Frackville. There is a nice stretch beginning on Rt. 895 in Auburn near the Schuylkill River bridge.

16. Tri-Valley Environmental Education Center - Located behind Tri-Valley High School in Hegins. The forested site features a trail that winds its way along and across Pine Creek.

17. The Swamp - A natural area under development near Gordon. Features constructed wetlands that are helping to clean acid mine drainage from Mahanoy Creek.

18. Albright's Woods Walking Path - The path winds through the Little League fields and through the woods behind Blue Mountain Middle School.

19. Lehigh & New England Trail - A 3-mile, flat, crushed stone trail that follows a section of the former Lehigh and New England Railroad corridor.

20. Mary D Sports Complex & Walking Trail - This level, paved walking trail is ADA compliant, and encircles the beautiful sports complex of a youth baseball field, soccer field, and ice skating pond. A large, paved lot affords ample parking.

21. Oldham Trail Bike & Walking Path - The path surface is mostly paved asphalt with a few areas being gravel and grass. Restrooms and parking are located at the Hegins Park and Community Pool.

22. Senator James J. Rhoades Nature Trail - This beautiful trail is paved with stone and allows visitors to walk and ride bicycles along a specially-designed path that extends about a half mile into the property.

23. Sweet Arrow Lake County Park - Four hiking trails and a boardwalk. HC accessible. Waterfall Trail provides a view of the signature falls. (570) 622-3742 ext. 5 www.sweetarrowlakepark.com



SHARE YOUR EXPERIENCES WITH US!
#ExploreSchuylkill

Play & Stay On 'The Mountain'



GOLF & EVENTS: 570.467.2242
HOTEL: 570.773.5252



1021 Brockton Mountain Dr
Barnesville, PA 18214

MTVALLEYGOLF.COM

36 HOLES OF GOLF

- Two 18 Hole Courses: The Mountain and The Valley
- Ranked 'A Top 100 value in the USA' by Golf Digest Magazine

OUR HOTEL

- Golf and travel packages now available at our award winning **Comfort Inn & Suites Barnesville Hotel**



Holiday Inn
Express

Welcome!

AN IHG® HOTEL



Holiday Inn Express FRACKVILLE, PA

Since opening in October 1999, Holiday Inn Express has undergone 4 major renovations. The newest renovation completed in 2023.

Holiday Inn Express, Frackville has won numerous awards and has been acknowledged many times for its Outstanding Customer Service. Such success could not have been possible without the outstanding efforts of our dedicated employees.

Voted best hotel in Schuylkill County for 10 years!

**Complimentary Express Start
"Build your own breakfast"**



**67 Attractive
Rooms, with...**

- 55 inch TVs
- High Speed Internet
- Refrigerator
- Microwave
- KEURIG
- Iron & Board
- Hairdryer

Route 61 & I-81, Exit 124A

958 Mall Road

FRACKVILLE, PA

570.874.1700

www.hiexpress.com/frackvillepa

100% Smoke, Marijuana, and Vape - Free!

100% Pet - Free!