

SHELBYVILLE | SIMPSONVILLE | SHELBY CO., KENTUCKY

VISITOR GUIDE

# YOUR BOURBON DESTINATION

COUNTY MAP INSIDE  
EST.  
17  
92



# CONTENTS

**BOURBON.....2-5**

**BOURBON TRAIL TRANSPORTATION ..6-7**

**HORSE FARM TOURS .....8-9**

## **OUTDOORS**

**CAMPING, BOATING, FISHING ..... 10**

**HORSEBACK RIDING ..... 11**

**TRAILS.....12**

**GEOCACHING .....13**

**GOLF & DISK GOLF ..... 13-14**

**SHELBY COUNTY PARKS ..... 14-15**

**DAY TRIPS .....16-17**

## **DINING**

**LOCAL FAVORITES ..... 18-20**

**INTERNATIONAL.....21**

**COFFEE & DESSERTS .....21**

**ATTRACTIONS.....22**

## **LODGING**

**HOTELS..... 23**

**BED AND BREAKFAST ..... 23**

**VACATION RENTALS ..... 24**

**SPECIALTY SHOPPING .....25-29**

**MAP .....32**



## BOURBON

Nestled between Louisville and Lexington, Shelby County, Kentucky is the American Saddlebred Capital of the World and Your Bourbon Destination. With almost 100 horse farms, two distilleries, two wineries, dozens of unique lodging options, and plenty of out door adventure, ShelbyKY is authentically Kentucky.

### JEPHTHA CREED DISTILLERY

Jeptha Creed Distillery is run by a dynamic mother-daughter duo, Joyce and Autumn Nethery. The Nethery family farm grows and produces the Bloody Butcher corn used in all of the bourbon, moonshine, and vodkas produced at Jeptha Creed Distillery. Jeptha Creed is part of the Kentucky Bourbon Trail Craft Tour, a collection of smaller distilleries that embrace the true Kentucky distilling heritage.

Jeptha Creed Distillery Tours & Tastings  
JepthaCreed.com  
500 Gordon Lane  
Shelbyville, KY 40065  
(502) 487-5007





## BULLEIT DISTILLING CO.

Bulleit Distilling Company is committed to sustainability and as part of the Kentucky Bourbon Trail, Bulleit Distillery embraces the frontier spirit with its high-rye bourbons and state-of-the-art, high tech facilities and distillation techniques. The multi-sensory tour entwines the sights, scents, sounds and tastes of Bulleit's Frontier Whiskey Bourbon. To this day, Bulleit Bourbon is distilled and aged in the Bulleit family tradition and their aging philosophy is simple: wait until the bourbon is ready.

Bulleit Distillery Tours & Tastings

Bulleit.com

3464 Benson Pike

Shelbyville, KY 40065

(502) 647-5799





## BOURBON TRAIL TRANSPORTATION

Tour the Kentucky Bourbon Trail & leave all your worries behind. Nothing is more important than your safety while touring Bourbon Country, so we have compiled a few of the many fabulous tour guide companies who can both plan and lead you to the legendary distilleries on the Kentucky Bourbon Trail.



### BLUE GRASS TOURS & CHARTER

Bluegrasstours.com  
(859) 252-5744

### BOURBONTOWN TOURS

BourbonTownTours.com  
(844) 268-7266

### BOURBON EXCURSIONS

BourbonExcursions.com  
(502) 233-9903

### EXECUTIVE CLASS TRANSPORTATION

ExecutiveClassTransport.com  
(502) 509-5884

### KENTUCKY BOURBON BOYS

KentuckyBourbonBoys.com  
(502) 777-0761

### MINT JULEP EXPERIENCES

MintJulepTours.com  
(502) 583-1433

### PEGASUS DISTILLERY EXPERIENCES

TakePegasusDistilled.com  
(502) 458-1862

### RDH LIMO & CHARTER

RdhLimo.com  
(502) 792-0241

### TOUR KENTUCKY BOURBON

TourKentuckyBourbon.com  
(502) 548-8302

### TRAVEL THE TRAIL

TraveltheTrail.com  
(502) 939-4701

### XTREME TRANSPORTATION

XtremeTransportation.com  
(502) 795-3525



## HORSE FARM TOURS

ShelbyKY is the American Saddlebred Horse Capital of the World, and there's no better place to get a behind-the-scenes look at authentic, working horse farms. More than 90 Saddlebred horse farms dot the rolling hills of ShelbyKY and are joined by a handful of other farms, featuring classic Thoroughbreds, American Quarter Horses, Hackney ponies, and even Icelandic horses. ShelbyKY is located less than 30 minutes from Churchill Downs, the home of the famous Kentucky Derby.

### HORSESENSING

270 Bagdad Road, Shelbyville, KY 40065  
(650) 776-4313 | [horsesensing.com](https://horsesensing.com)

Horsesensing is committed to helping veterans transition back to civilian life more successfully through equine therapy. Private tours of the farm are by appointment and are available for individuals and large groups.

### KISMET FARM

199 Colt Run Road, Simpsonville, KY 40067  
(651) 248-2027

Kismet Farm is a classic Kentucky horse farm in the heart of American Saddlebred country. Kismet operates as a full-service show horse and training farm. Riding lessons for all ages and ability levels are available. Amateurs can improve their skills and those new to equestrian can try out a new hobby with welcoming and easygoing instructors. Private tours of the farm are by appointment only and are available for both individuals and large groups.

### LÉTTLEIKI ICELANDICS

6105 Eminence Pike, Shelbyville, KY 40065  
(502) 541-4590 | [lettleikiicelandics.com](https://lettleikiicelandics.com)

An internationally recognized center for Icelandic horses, Léttleiki Icelandics is the largest Icelandic horse farm in Kentucky. While they host some of the largest Icelandic horse events and competitions in the country, Léttleiki also offers private individual and group lessons in the spring and fall. Take a tour of their facilities and learn about the unique Icelandic horse breeds they board. Tours by appointment only.

### WEST MEADOW FARM

2218 Ellis Road, Eminence, KY 40019  
(502) 558-3400 | [westmeadowfarmky.com](https://westmeadowfarmky.com)

Primarily a thoroughbred horse farm, West Meadow Farm finds joy in connecting people with animals and nature, and their care for horses showcases that well. Horses of all sizes and ages call the farm home. When you visit, you'll find foals, older mares, young horses, and even retired racing horses running across the meadows. Farm tours are available by appointment for families and groups.





## OUTDOORS

### CAMPING, BOATING, FISHING



#### LAKE SHELBY CAMPGROUND

1433 Burks Branch Rd, Shelbyville, KY 40065  
(502) 633-5069 | shelycountyparks.com

Camp right beside the peaceful waters of Lake Shelby! Lake Shelby Park & Campground has 10 RV sites, one with full hookup including sewer, nine with electric and water only, all ten RV sites have 50-amp max service. In addition, there are 14 primitive tent sites situated along beautiful Clear Creek and Lake Shelby. The park is great for canoeing, kayaking, fishing, and bird watching. Bald eagles are frequently spotted! *Reserve your campsite online.*

#### GUIST CREEK MARINA & CAMPGROUND

11990 Boat Dock Road, Shelbyville, KY 40065  
(502) 647-5359 | guistcreek.com

Guist Creek Lake is Shelby County's largest lake and located in a serene, rural part of the county. Deer, turkey and other wildlife are frequently seen near the water. This lake is primarily for fishermen and is one of the best bass lakes for its size in the state! Largemouth bass, hybrid stripers, catfish, crappie and bluegill are caught regularly.

The Campground has pull-through sites with water, electric and 30- and 50-amp service and dump station. This popular campground has a very clean shower house and restrooms, pavilion, children's playground, canoe, kayak, and pontoon rentals. Be sure to visit the Ship Store for supplies and Channel Cat Fish House for relaxing waterfront dining. *Call to reserve your campsite.*

### HORSEBACK RIDING

#### SHELBY TRAILS PARK & RED FERN RIDING CENTER

5063 Aiken Road, Simpsonville, KY 40067  
(502) 437-4375 | redfernridercenter.com

Guided Horseback Trail Riding! Red Fern Riding Center offers an array of services from guided horseback rides to the general public, to riding lessons, horse training, and full-care boarding. Red Fern Riding Center, located within Shelby Trails Park, offers an array of services, including guided horseback rides and riding lessons to horse training and full-care boarding.

Shelby Trails Park is a public park open to equestrians and hikers alike. As a trail rider or hiker, the park welcomes you to enjoy over 400 acres and 21 miles of beautiful trails! The trail system has a bit of everything: flat easy areas, creek crossings, step over logs, good hills and more technical trails on the back side. Bring your horses, hiking boots, and dogs to enjoy this beautiful park.





## TRAILS

**Wilder Fitness Trail:** 1 mile loop. Trailhead located at South Clear Creek Park adjacent to the Family Activity Center. Paved surface. Level to slight/moderate inclines. Ideal for walkers with or without strollers, and joggers. Views and access to Clear Creek Park's FAC, athletic areas, picnic areas, playgrounds, basketball courts, tennis courts, swimming pool, and more.

**Clear Creek Greenway Trail:** .75 mile one-way. Trailhead located at 97 7th Street, Shelbyville, KY 40065 and at Stratton Bottom Park. Paved/concrete surface. Level. Ideal for walkers with or without strollers, joggers, bicycles, and rollerbladers. Beautiful natural scenery along Clear Creek with easy access to downtown Shelbyville shopping, dining, museums, tourist attractions and more!

**Soil Conservation Trail:** 1 mile loop trail. Trailhead located at Gate 3 of North Clear Creek Park near athletic field #9. Level and slight inclines. Ideal for walkers, hikers, and trail runners. With views of Lake Shelby, Clear Creek, golf course and the natural environment.

**Warrior Fitness Trail:** 1 mile one-way. Trailhead located at Gate 3 of North Clear Creek Park near athletic field #9 and off of Painted Stone Elementary School parking lot at 150 Warriors Way, Shelbyville, KY. Paved surface. Level to slight inclines. Ideal for walkers, joggers, bicycles, and rollerbladers.

**Squire Boone Trail:** .75 mile loop. Level dirt trail. Located in the primitive camping area of Lake Shelby Campground. Views of Lake Shelby, wetlands, Clear Creek and local tree farm. Ideal for hikers, trail runners, and fishing.

**Cherokee Primitive Trail:** .75 one-way. Trailhead located across from Clear Creek Park Gate 3 next to Shelby County High School Athletic Complex. Level to slight inclines dirt trail. Views of Clear Creek and local tree farm.

**Shelby Trails Park:** 21+ miles of trails. Located at 5063 Aiken Road, Simpsonville, KY 40067. Level, slight, moderate and strenuous inclines, dirt trails. Ideal for hiking, horseback riding, wildlife watching, and trail running. No mountain biking permitted.

**Red Orchard Park Trails:** 2 miles of trails. Level, slight to moderate inclines, dirt trails. Ideal for hiking, horseback riding, and trail running. No mountain biking permitted.

**TRAIL NOTICE:** All trails open at dawn and close at dusk. Beware of fallen trees, steep areas, rock outcroppings and other dangers. No motorized vehicles permitted without permit. USE AT YOUR OWN RISK.

For additional information, call 502-633-5059 or visit [shelbycountyparks.com](http://shelbycountyparks.com).

## GEOCACHING

Shelby County, KY

Geocaching is the world's largest treasure hunt! This high-tech treasure hunt combines GPS tracking with outdoor adventure and it's free and fun for all ages. There are geocaches all over Shelby County just waiting to be discovered. For more info, go to [geocaching.com](http://geocaching.com) and type in zip code 40065 (Shelbyville) or 40067 (Simpsonville).

## GOLF & DISK GOLF

### CLEAR CREEK GOLF COURSE

717 Burks Branch Road, Shelbyville KY, 40065  
(502) 633-0375 | [clearcreekgolfcenter.com](http://clearcreekgolfcenter.com)

A challenging, yet fun-filled executive golf course style, the 9-Hole course offers a variety of benefits to both beginners, advanced players and to walkers seeking a bit of "golf fitness". Yardage on the 9-Hole course varies from 1400 to 1700, with six par 3's and three par 4's. One 9-hole round is equal to approximately a two-mike walk. Play is on an open basis with the first tee operating at "first come, first serve" seven days a week.



## SHELBYVILLE COUNTRY CLUB

47 Smithville Road, Shelbyville KY, 40065  
(502) 633-0542 | [shelbyvillecc.com/public](http://shelbyvillecc.com/public)

The course at Shelbyville Country Club is a modest 6400 yards from the back tees. While not difficult in length, golfers of all skill levels will find the track both fun and challenging. Winding around the signature “Horseshoe Lake” your course management and shot making skills will be in high demand. Gorgeous views, a dynamic layout, and beautifully manicured greens will have you wanting to head from 18 green right back to the #1 tee!

## WEISSINGER HILLS GOLF COURSE

2240 Mt Eden Road, Shelbyville KY, 40065  
(502) 633-7332 | [weissingerhills.com](http://weissingerhills.com)

Weissinger Hills Golf Course is an 18-hole golf course located in charming Shelbyville, Kentucky. The staff at Weissinger Hills Golf Course is second to none. One of the true delights about playing at Weissinger Hills Golf Course is the friendly way in which you will be treated. This Shelbyville golf course has four sets of tees for all skill levels. Golf Digest has given Weissinger Hills Golf Course a 3 1/2-star rating making it one of the finest public courses in the Louisville area! Next time you're at the course be sure to check out the practice green and driving range. You will love this Shelbyville golf experience.

## RYAN'S COURSE – DISC GOLF COURSE

Inside Red Orchard Park  
704 Kentucky Street, Shelbyville KY, 40065

This pro disc golf course is open year-round Dawn until Dusk with 18 holes. The course is cart friendly and has restrooms but no drinking water.

## SHELBY COUNTY PARKS

### CLEAR CREEK PARK

717 Burks Branch Road, Shelbyville KY, 40065

Established in 1974, this 130 acre park is not only the home to beautiful scenery but also a plethora of activities. The Family Activity Center is a 40,000 square foot facility with an indoor swimming pool, basketball courts, full fitness center and an outdoor pool with water slide. Additionally, there is a 9 hole golf course complete with driving range, 6 outdoor lighted tennis courts, 1 outdoor basketball court, 3 outdoor pickleball courts, hiking and riding trails and an award winning playground.



## LAKE SHELBY PARK & CAMPGROUND

1433 Burks Branch Road, Shelbyville KY, 40065

Originally built in 1949 and used as the city's water reservoir, Lake Shelby is 20 acres of fish-stocked beauty. Aside from the fishing, canoeing and kayaking one can enjoy hiking trails and bring your camping gear and spend the night!

## RED ORCHARD PARK

704 Kentucky Street, Shelbyville KY, 40065

The orchard dates back to 1792 when the first seeds were sown, and now all 131 acres are for the enjoyment of the public. The park features a 5 acre dog park, divided into 2 sides, disc golf course, playground and the Red Orchard Barn (which is available to be rented out for events). Truly a gorgeous park year-round, but especially in the fall when the leaves change color and the reason for the name of the park becomes evident!

## SHELBY TRAILS PARK

5063 Aiken Road, Simpsonville KY, 40067

Whether you are an equestrian or a hiker, Shelby Trails has what you need at this 400 acre park with 21 miles of trails. Bring your own horse for an excursion, take a lesson at Red Fern Riding Center or go on a guided trail ride!



## DAY TRIPS

### KENTUCKY BOURBON TRAIL

kybourbontrail.com

This spirited adventure features 18 distilleries that define Kentucky Bourbon as the world knows it. Take behind-the-scenes tours, meet master distillers and taste select Bourbons you can't find in stores. Along the way, rack up stamps in your passport to earn swag (and bragging rights). Thirsty for more? Check out the Kentucky Bourbon Trail Craft Tour® where every stop takes you deeper than ever before into the unrivaled craftsmanship of Kentucky's Bourbon and distilling heritage.

Other area distilleries include:

- Buffalo Trace (Frankfort)
- Heaven Hill (Bardstown)
- Woodford Reserve (Versailles)
- Angel's Envy (Louisville)
- Maker's Mark (Loretto)
- Old Forester (Louisville)
- Jim Beam (Clermont)

### CHURCHILL DOWNS

700 Central Avenue, Louisville  
(502) 636-4400 | churchilldowns.com

Visit the legendary home of the Kentucky Derby, which celebrates its 150th consecutive running in 2024! Enjoy a classic mint julep, take in the sight of the twin spires, and watch as the best of Thoroughbred racing thunders by.

### KENTUCKY DERBY MUSEUM

704 Central Avenue, Louisville  
(502) 637-1111 | derbymuseum.org

The Kentucky Derby Museum, where every day is Derby day, is the official tour provider of historic Churchill Downs. When you visit the Museum, you will find yourself immersed in the next best thing to actually being at the Derby!

### LOUISVILLE SLUGGER MUSEUM & FACTORY

800 W. Main Street, Louisville  
(877) 775-8443 | sluggermuseum.com

It takes a special place to craft the #1 Bat in Major League Baseball. At Louisville Slugger Museum & Factory, experience history-in-the-making as you stroll through the actual factory where world-famous Louisville Slugger bats are created. The award-winning factory tour is a highlight of the visit here, but there's plenty more to enjoy along with it.

### OLD BARDSTOWN VILLAGE CIVIL WAR MUSEUM

310 E. Bardstown Street, Bardstown  
(502) 349-0291 | bardstownmuseumrow.org

Visit the 4th largest Civil War Museum in the United States with exhibits featuring a myriad of artifacts from both the Confederacy and Union.



### MY OLD KENTUCKY HOME DINNER TRAIN

602 N 3rd Street, Bardstown  
(502) 348-7300 | kydinnertrain.com

While My Old Kentucky Dinner Train's patrons travel across the beautiful natural scenery and historical sites during the two hour excursion, they are invited to embark on a culinary journey equally remarkable.



### MY OLD KENTUCKY HOME STATE PARK

501 E. Stephen Foster Avenue, Bardstown  
(502) 348-3502 | visitmyoldkyhome.com

The farm that inspired the imagery in Stephen Collins Foster's famous song, "My Old Kentucky Home, Good-Night!" is Kentucky's most famous and beloved historic site. Tour the historic mansion, explore the grounds, or enjoy a round of golf. In the summer months, see "The Stephen Foster Story" on stage.



## DINING

### LOCAL FAVORITES

#### BARREL ROOM

622 Main Street, Shelbyville  
(502) 437-0420

The first expansion of the Old Louisville Brewery with beer, bourbon, wine, cocktails & live events. With frequent live music in a variety of genres, The Barrel Room is a must-stop for after dinner drinks and fun!

#### B & N FOOD MARKET

5945 Elmburg Road, Bagdad  
(502) 747-8860

Iconic country dining in the heart of Bagdad, KY. Serving all your favorite comfort foods, homemade desserts & the best ice cream around.

#### BELL HOUSE RESTAURANT

721 Main Street, Shelbyville  
(502) 437-5678  
bellhouserestaurant.com

Classic American cuisine served with authentic Southern hospitality. Menu favorites include Kentucky's best Hot Brown, Henry Bain Pork, and Bob's Burger. Leave room for dessert, each one made in-house every day by Pastry Chef Ashton.

#### CARRISS'S GROCERY

7 Southville Pike, Shelbyville  
(502) 738-5163

Homemade country-style cooking in a relaxed atmosphere.

#### CATTLEMAN'S ROADHOUSE

221 Brighton Circle, Shelbyville,  
KY 40065 | (502) 647-5959

Cattleman's Roadhouse is a locally owned, Kentucky Proud restaurant. With several locations in the surrounding area, Cattleman's Roadhouse is known for their great steaks, expansive salad bar, and welcoming atmosphere.

#### CHANNEL CAT FISH HOUSE

11990 Boat Dock Road,  
Shelbyville | (502) 321-5331

This waterfront restaurant located on the picturesque Guist Creek Marina & Campground features a laid-back menu of fish house classics. With its prime location across from Bulleit Distilling Co., and ease of access for fishers, boaters, and campers enjoying the outdoors at Guist Creek Marina.

#### CLAUDIA SANDERS DINNER HOUSE

3202 Shelbyville Road,  
Shelbyville | (502) 633-5600  
claudiasanders.com

Claudia Sanders Dinner House is a true American restaurant in the heart of Shelbyville, KY. It was founded by Colonel Sanders and his wife Claudia to serve as a true example of country cooking at its best, serving as a delicious family-style restaurant.



#### CONVENIENT FOOD MART

38 Main Street, Shelbyville  
(502) 633-5477

A laid-back local favorite with convenient and affordable traveling needs like gas, snacks, drinks, and homemade hot meals on Shelbyville's historic Main Street. Daily specials include fresh-grilled hamburgers, meatloaf, fried chicken, and more. Finish with dessert, like their towering soft serve, whose flavors change daily using the freshest ingredients.

#### THE CREED CAFÉ AT JEPHTHA CREED DISTILLERY

500 Gordon Lane, Shelbyville  
(502) 487-5007

The Creed Café is the perfect place to grab lunch, snacks, small bites, and cocktails after your tasting.

#### THE FARM KITCHEN

6562 Frankfort Road,  
Shelbyville

Family-style dining at its best serving breakfast and lunch with a relaxed country feel. Featuring daily, unique specials and decadent desserts, make sure to arrive early, as they often sell out of

their mouth watering banana pudding and strawberry shortcake.

#### THE FRIENDLY FARMER'S FRIDGE

5715 Zaring Mill Road,  
Shelbyville  
(502) 931-6441

Homestyle breakfast and lunch, plus local food grocery that offers fresh local produce, dairy, meat, eggs, honey and baked good. Call for hours.

#### GALLREIN FARMS

1029 Vigo Road, Shelbyville  
(502) 633-4849  
gallrein farms.com

Farm-fresh dining and the best of life on the farm: Farm fresh vegetables, a petting zoo, nine greenhouses full of gorgeous flowers in the spring. Seasonal hours, call or check the website before visiting.

#### HOMETOWN PIZZA

1635 Mt. Eden Road, Shelbyville  
(502) 633-7900  
hometownpizza.com

Serving exceptional, homemade pizza and other delicious food for more than 30 years.





McKinley's Café

### JT'S PIZZA & SUBS

129 Buck Creek Road,  
Simpsonville | (502) 722-9030  
Homemade pizza and the best  
subs in town

### KEN TEX BBQ

1163 Mt. Eden Drive, Shelbyville  
(502) 633-2463

Authentic Texas-style  
barbeque in ShelbyKY. Their  
signature process of smoking  
meat for long hours has kept  
customers coming back since  
1984.

### LA COCINA DE MAMA

535 Main Street, Shelbyville  
(502) 633-1114  
lacocinademamaky.com/menu  
Family-style restaurant with  
amazing recipes passed down  
from generation to generation.  
Indoor and outdoor seating  
available.

### LITTLE MOUNT LAVENDER CO.

6905 Shelbyville Road,  
Simpsonville | (502) 437-2141  
Stop by the bakery for  
delicious lavender baked  
goods, coffee beverages, teas,

and more. The bakery also  
features a full bar where you  
can enjoy refreshing lavender  
cocktails and a decadent  
charcuterie, salads, and soups.  
Before you go, check out the  
boutique for unique gifts from  
local artisans.

### MAX'S SUGAR SHACK

18 Main Street, Shelbyville  
Very popular seasonal shaved  
ice food stand. Seasonal hours  
only. Typically open spring  
and summer.

### MCKINLEY'S CAFÉ

615 Main Street, Shelbyville  
(502) 647-1665

A quarter-century of baking  
fresh bread and serving chef-  
crafted sandwiches, salads,  
and sweet confections.

### WEATHERED OAK FARM CAFÉ

6950 Shelbyville Road,  
Simpsonville | (502) 257-1092  
Serving breakfast, lunch,  
coffee and specialty drinks.  
Don't miss their famous  
cinnamon rolls and homemade  
breads!

## INTERNATIONAL

### CHINA 1

215 Boone Station Road,  
Shelbyville | (502) 633-3030

### EL MOLCAJETE

811 Washington Street,  
Shelbyville | (502) 437-0759

### EL NOPAL – SHELBYVILLE

480 Taylorsville Road,  
Shelbyville | (502) 437-2131  
elnopalmex.com

### EL NOPAL – SIMPSONVILLE

1187 Buck Creek Road,  
Simpsonville | (502) 405-1130  
elnopalmex.com

### FIESTA MEXICANA

1815 Midland Trail,  
Shelbyville | (502) 437-2140

### GIOVANNI'S PIZZA

2001 Midland Trail,  
Shelbyville | (502) 520-2100  
giovannispizza.com

### JADE GARDEN

1155 Buck Creek Road,  
Simpsonville | (502) 262-8772

### LA COCINA DE MAMA

535 Main Street,  
Shelbyville | (502) 633-1114

### LA FOGATA

51 Main Street,  
Shelbyville | (502) 513-5093

### LA POBLANITA TAQUERIA

1534 Midland Trail,  
Shelbyville | (502) 437-0513

### LITTLE ITALY

1155 Buck Creek Road,  
Simpsonville | (502) 722-8307

### MARIMBA MEXICAN RESTAURANT

2059 Midland Trail,  
Shelbyville | (502) 647-1990

### MI CASITA

182 Midland Blvd.,  
Shelbyville | (502) 437-2113  
micasitashelbyville.com

### MILANO ITALIAN RESTAURANT

1745 Midland Trail,  
Shelbyville | (502) 437-0459  
milano-ky.com

### PISCO SOUR

2093 Midland Trail,  
Shelbyville | (502) 437-5172

### TIENDA GENESIS

6902 Shelbyville Road,  
Simpsonville | (502) 722-8854

### TIENDA LA COMITECA

178 Midland Blvd., Shelbyville  
(502) 513-5234

## COFFEE & DESSERTS

### BRICK + MORTAR BOUTIQUE AND COFFEEHOUSE

6999 Shelbyville Road,  
Simpsonville | (502) 405-3126

### THE PADDOCK COFFEE, EATS & GATHERINGS

700 Main Street,  
Shelbyville | (502) 321-1778

### SERENDIPITY KANDY KITCHEN

519 Main Street,  
Shelbyville | (502) 310-9532

### SIXTH AND MAIN COFFEEHOUSE

547 Main Street,  
Shelbyville | (502) 647-7751

### SPOTZ GELATO

545 Main Street,  
Shelbyville | (502) 682-3750

### WEATHERED OAK FARMS

6950 Shelbyville Road,  
Simpsonville | (502) 257-1092

## ATTRACTIONS



### BULLEIT DISTILLING CO.

3462 Benson Pike, Shelbyville,  
KY 40065 | (502) 647-5799  
bulleit.com

### FAMILY ACTIVITY CENTER

717 Burks Branch Rd., Shelbyville,  
KY 40065 | (502) 633-5059  
shelbycountyparks.com

### GALLREIN FARMS

1029 Vigo Road, Shelbyville,  
KY 40065 | (502) 633-4849  
gallrein farms.com

### GROVE HILL CEMETERY

511 Mt. Eden Road, Shelbyville,  
KY 40065 | (502) 633-2750  
grovehillcemetery.org

### JEPHATH CREED DISTILLERY

500 Gordon Lane, Shelbyville,  
KY 40065 | (502) 487-5007  
jephathcreed.com

### MULBERRY ORCHARD

1330 Mulberry Pike, Shelbyville,  
KY 40065 | (502) 655-2633  
mulberryorchardky.com

### SHELBY COUNTY COMMUNITY THEATRE

801 Main Street, Shelbyville,  
KY 40065 | (502) 633-0222  
shelbytheatre.org

### SHELBY COUNTY HISTORICAL SOCIETY & MUSEUM

627 Main Street, Shelbyville,  
KY 40065 | (502) 513-5555  
shelbykyhistory.org

### TALON WINERY

400 Gordon Lane, Shelbyville,  
KY 40065 | (502) 633-6969  
talonwine.com

### WAKEFIELD-SCEARCE GALLERIES

525 Washington St., Shelbyville,  
KY 40065 | (502) 633-4382  
wakefieldscearce.com

## LODGING

### HOTELS

#### BEST WESTERN SHELBYVILLE LODGE



115 Isaac Shelby Drive, Shelbyville, KY 40065 | (502) 633-4400

#### COMFORT INN & SUITES



251 Brighton Circle, Shelbyville, KY 40065 | (502) 633-9933

#### ECONO LODGE



100 Howard Drive, Shelbyville, KY 40065 | (502) 633-5771

#### HAMPTON INN & SUITES



814 Aristocrat Court, Simpsonville, KY 40067 | (502) 405-3243

#### HOLIDAY INN EXPRESS & SUITES



110 Clubhouse Drive, Shelbyville, KY 40065 | (502) 647-0109

#### RED ROOF INN



101 Howard Drive, Shelbyville, KY 40065 | (502) 633-4005

### BED AND BREAKFAST

#### CERULEAN FARM BED & BREAKFAST



575 Moody Pike, Shelbyville, KY 40065 | (502) 551-3570  
ceruleanfarmbedandbreakfast.com

Bring your horse! Cerulean Farm is the only combination Guest/Horse BnB in Kentucky. We offer accommodations for horses traveling in for trail riding or local shows. Stalls, private turn-out and professionally designed outdoor arena are available. A perfect spot for a honeymoon, girls' getaway, business trip or family trip.

#### REGINA'S COUNTRY LIVIN' BED & BREAKFAST



Finchville, KY 40022 | (502) 553-6106

Charming farmhouse with 3 private bedrooms available for guests to rent. Regina's Country Livin' is located just off Interstate 64. You'll love the multiple entertaining areas, beautiful views, and community park just beyond the back yard.

#### YELLOW CARRIAGE HOUSE BED & BREAKFAST



4876 Shelbyville Road, Simpsonville, KY 40067 | (502) 536-5338  
yellowcarriagehouse.com

Whether you're after that perfect romantic getaway, weekend adventure, or looking for an elegant alternative to chain hotels when traveling for business, the Yellow Carriage House offers accommodations to make your stay truly memorable.



## VACATION RENTALS



SEE ALL SHELBYKY VACATION RENTALS ONLINE AT VISITSHELBYKY.COM/STAY



## SPECIALTY SHOPPING

### BRICK + MORTAR BOUTIQUE AND COFFEEHOUSE

6999 Shelbyville Road, Simpsonville, KY 40067 | (502) 405-3126

Shop and sip at this popular coffeehouse and boutique, featuring lots of home products, situated in the heart of quaint Simpsonville.

### EXECUTIVE CIGAR LOUNGE & BOURBON BAR

799 Aristocrat Court, Simpsonville, KY 40067 | (502) 722-8642  
executivecigarllc.com

Shop for your favorite cigars in this full-service Cigar store with a full-service Bar specializing in Kentucky Bourbon.

### LITTLE MOUNT LAVENDER COMPANY

6905 Shelbyville Road, Simpsonville, KY 40067 | (502) 437-2141  
littlemountlavender.com

Little Mount Lavender, Kentucky's largest lavender farm offers organically grown and locally sourced products, from lavender flowers and buds to jewelry and gardening items. Don't miss the Little Mount Bakery for delicious lavender baked goods, coffee beverages, teas, and specialty cocktails.



Little Mount Lavender Company





The Outlet Shoppes of the Bluegrass

## OUTLET SHOPPES OF THE BLUEGRASS

1155 Buck Creek Road, Simpsonville, KY 40067 | (502) 722-5807  
[theoutletshoppesofthebluegrass.com](http://theoutletshoppesofthebluegrass.com)

The Outlet Shoppes of the Bluegrass is the only Outlet Shopping center in the state of Kentucky and Kentucky's newest shopping destination. Save 25-60% in 90 well-known designer outlets including, Coach, Banana Republic, Kentucky's only Restoration Hardware, Nike, North Face, Under Armour, & Vera Bradley. Enjoy the Food Court, with center court fountains and fireplace. Ask for group tour specials.

## SHELBY COUNTY FLEA MARKET

820 Buck Creek Road, Simpsonville, KY 40067 | (502) 722-8883

The oldest and largest flea market in Kentucky with miles and miles of vendors! Open to the public year round 9 am – 5 pm.

## SIMPSONVILLE FARMER'S MARKET

7012-7022 US-60, (Fred Wiche Park)  
[simpsonvillefarmersmarket.com](http://simpsonvillefarmersmarket.com)

An open-air market held on in-season Saturdays in the heart of downtown Simpsonville. The vendors are local farmers and artisans that feature an array of products from the expected seasonal fruits and vegetables, to eggs and artisan cheeses, locally roasted coffee, meats, health and beauty care and more. Open May to September.

## THE LOVELY FIG BOUTIQUE

6950 Shelbyville Road #1, Simpsonville, KY 40067  
 (502) 777-582 | [thelovelyfig.com](http://thelovelyfig.com)

Providing a fun shopping experience where women feel treasured. Clothing • Accessories • Home  
 "Whatever is lovely... dwell on these things!"

## BAGDAD FARMER'S MARKET

5965 Elmburg Road, Bagdad, KY 40003 | (502) 387-1002

Bagdad Farmers Market is an indoor air-conditioned market offering things from local farmers and craftspeople in the Bagdad, Kentucky area. Depending on the season this might include local beef and pork, eggs, fresh produce, honey, maple syrup, fresh baked goods and many craft items.

## BAEHR'S DEN COLLECTIBLES

724 Washington Street, Shelbyville, KY 40065 | (502) 437-5300

This little shop is larger than it looks on the outside and filled with antique and unique items you won't find anywhere else.

## DOGWOOD ART GALLERY & GIFTS

800 Main Street, Shelbyville, KY 40065  
[info@shelbyartists.org](mailto:info@shelbyartists.org)

Find handmade art and gifts made by local and regional artists and crafters.





Main Street, Shelbyville

### **GIVE A CHANCE BOUTIQUE**

711 Main Street, Shelbyville, KY 40065 | (502) 487-1474

A Boutique for the animal lover offering high quality pet supplies, local products, & unique gifts.

### **GOGH CRAZY ART STUDIO**

804 Main Street, Shelbyville, KY 40065 | (502) 220-0456

Stop in Gogh Crazy for painting and craft parties that are custom designed especially for you, in a relaxed social environment. We have a variety of class types that we offer, from canvas, wooden cut outs, bourbon barrel lids, guest artists, drawing lessons and much more.

### **IMPRESS BOUTIQUE AND PRINTING**

613 Main Street, Shelbyville, KY 40065  
impress-ky.com

Custom printed gifts, clothing, purses, jewelry, artwork, home decor, accessories, coffee, chocolate and more.

### **OPERATION CARE SECONDHAND STORE**

708 Main Street, Shelbyville, KY 40065 | (502) 633-1965

Shop for a good cause! You'll love this store filled with quality secondhand furniture, kitchen accessories, clothing, books, specialty items and more.

### **THE PAISLEY PIG – ANTIQUE STORE**

528 Main Street, Shelbyville, KY 40065 | (502) 633-7506

You could spend all afternoon in this lovely and very large antique store. Loads of vendors and unique items.

### **POLKA DOTTED PINEAPPLE BOUTIQUE**

536 Main Street, Shelbyville, KY 40065 | (502) 437-0418  
thepolkadottedpineapple.com

Come for the hand-crafted Derby hats, stay for the unique and interesting collection of women's clothing. The Polka Dotted Pineapple Boutique features luxurious and high-end clothing options in a range of sizes.

### **RECLAIMED ON MAIN – ANTIQUE STORE**

514 Main Street, Shelbyville, KY 40065 | (502) 633-0001  
reclaimedonmain.antiquetrail.com

20,000 square feet of antiques! Vintage clothing, furniture, collectibles, china and more can be found in this huge antique store in downtown Shelbyville.

### **PINEAPPLE PAISLEY BOUTIQUE**

537 Main Street, Shelbyville, KY 40065  
pineapplepaisley.com

Locally owned women's clothing boutique located in Shelbyville, KY, striving to offer high quality apparel and accessories at affordable prices.

### **PRETTY IN PINK BOUTIQUE**

1745 Midland Trail, Shelbyville, KY 40065 | (502) 655-0160  
shoppipboutique.com

Wide variety of unique, trendy fashions for women and children.

### **STACEY'S SIMPLE STUFF**

1025 Main Street, Shelbyville, KY 40065 | (502) 220-1605

Not only is this a wonderful shop, but it is also located inside one of the most historic structures in Shelby County! Stacey's has farmhouse and vintage replica products to make your country decorating easy!

### **THE SHOW SHOP**

718 Main Street, Unit C, Shelbyville, KY 40065 | (502) 681-3920  
showshopconsignment.com

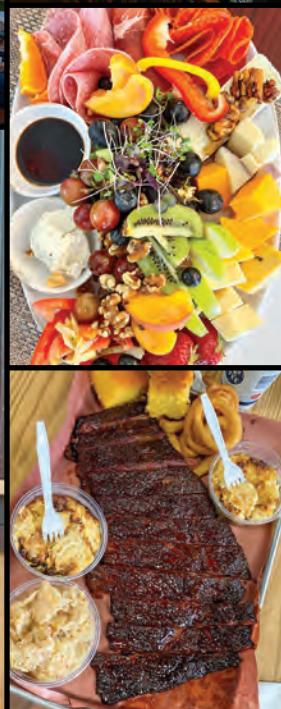
Riding apparel, accessories and equine gifts.

### **WAKEFIELD-SCEARCE GALLERY – ANTIQUE STORE**

525 Washington Street, Shelbyville, KY 40065 | (502) 633-4382  
wakefieldscearce.com

Wakefield-Scearce Galleries, founded in 1947, is proud of its heritage and the ability to continually serve clients from all over the US with an extensive collection of fine English Antiques - silver, furniture and accessories.

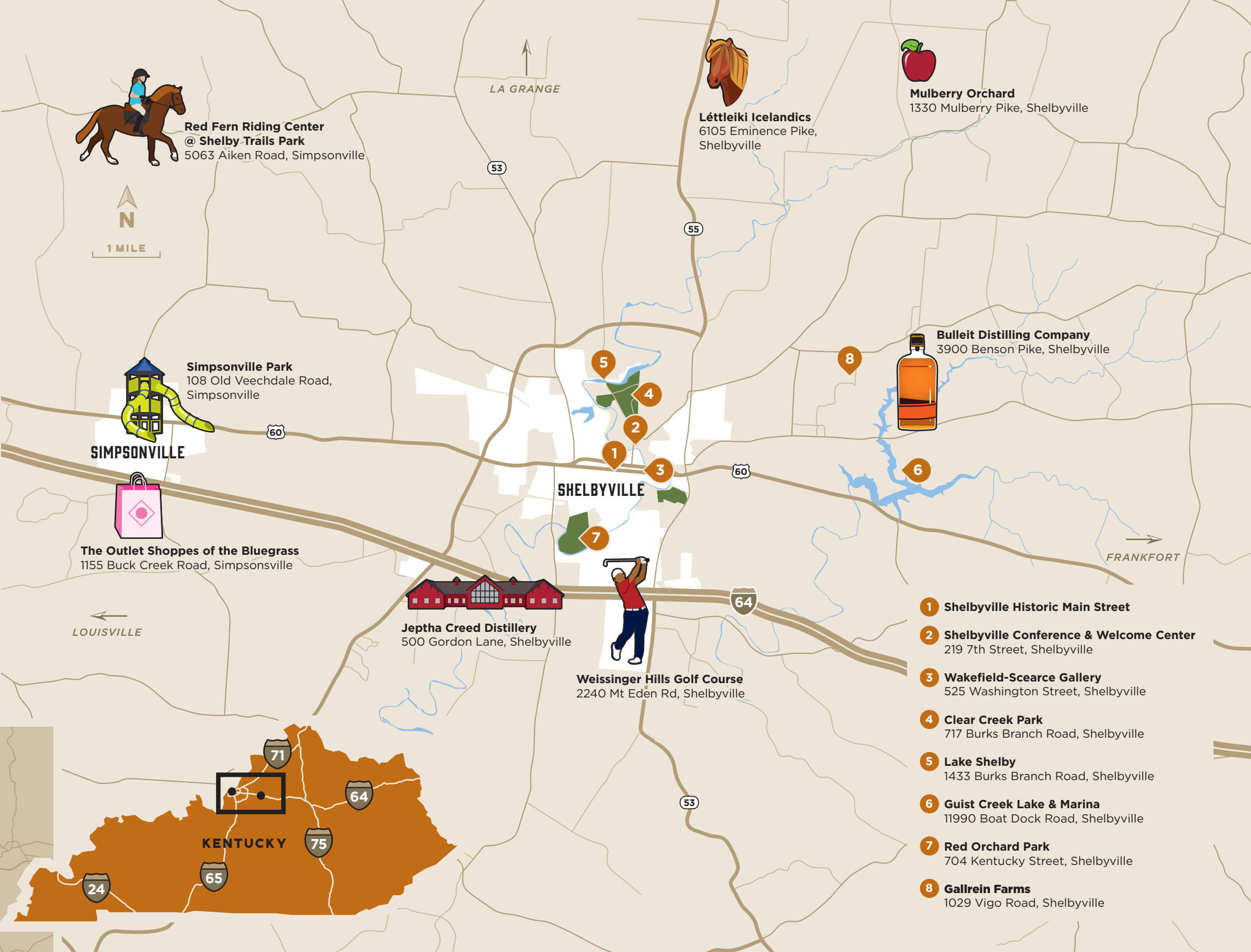






Relevant mileage from Shelby County:

Lexington, KY	46 MILES
Cincinnati, OH	89 MILES
Indianapolis, IN	143 MILES
Columbus, OH	196 MILES
Nashville, TN	197 MILES
Knoxville, TN	218 MILES
St. Louis, MO	291 MILES
Chicago, IL	326 MILES
Detroit, MI	351 MILES
Memphis, TN	396 MILES
Atlanta, GA	427 MILES
Richmond, VA	536 MILES
Louisville Muhammad Ali International Airport (SDF)	32 MILES
Blue Grass Airport [Lexington] (LEX)	42 MILES
Cincinnati/Northern Kentucky International Airport (CVG)	86 MILES



- 1 Shelbyville Historic Main Street
- 2 Shelbyville Conference & Welcome Center  
219 7th Street, Shelbyville
- 3 Wakefield-Scearce Gallery  
525 Washington Street, Shelbyville
- 4 Clear Creek Park  
717 Burks Branch Road, Shelbyville
- 5 Lake Shelby  
1433 Burks Branch Road, Shelbyville
- 6 Guist Creek Lake & Marina  
11990 Boat Dock Road, Shelbyville
- 7 Red Orchard Park  
704 Kentucky Street, Shelbyville
- 8 Gallrein Farms  
1029 Vigo Road, Shelbyville