

**The Homestead** — A mile of sandy beach on Lake Michigan, year-round recreational facilities including a new salon, health & fitness center, spa, interesting shops and inviting restaurants await you. So, too, do extraordinary facilities for weddings, reunions and meetings.

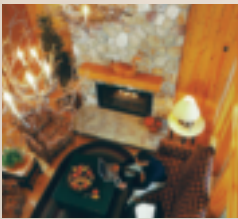
You can enjoy it all while staying at Fiddler's Pond, a resort hotel; Little Belle, a romantic getaway for couples; Stony Brook Lodge, a respite with commanding views; The Inn, an exquisitely restored historic structure; and privately-owned homes or condominiums.

Rates vary with the season and package plans are always available. AAA, AARP and CAA specials are also available. 231.334.5000 [www.thehomesteadresort.com](http://www.thehomesteadresort.com)

**Sylvan Inn** — Established in 1885 and carefully restored to retain its historic ambience and gracious country charm. Air-conditioned. Open May through October. 231.334.4333 [www.sylvaninn.com](http://www.sylvaninn.com)

**Glen Craft Marina & Resort** — Offers gorgeous views of Glen Lake from beachfront villas and rustic cottages. Marina and store on-site. Weekly only summer season. 231.334.4556 [www.glencraftmarina.com](http://www.glencraftmarina.com)

**Glen Arbor Lakeshore Inn** — Resembles a New England hostelry but with all of the modern conveniences. Rates vary by season. Call for rates and availability. 231.334.3773 [www.lakeshoreinnmotel.com](http://www.lakeshoreinnmotel.com)



DRIVING DISTANCES					
Akron	456	Dayton	465	Madison*	277
Ann Arbor	265	Detroit	288	Milwaukee*	227
Aurora	358	Evansville	607	Naperville	346
Chicago	320	Ft. Wayne	325	Peoria	454
Cincinnati	517	Grand Rapids	172	Rockford	405
Cleveland	435	Indianapolis	392	South Bend	256
Columbus	450	Lansing	199	Toledo	320

\* VIA CAR FERRY

# VISIT *SLEEPING BEAR DUNES* NATIONAL LAKESHORE

A Publication of Sleeping Bear Dunes Visitors Bureau  
*Not affiliated with National Park Service/Sleeping Bear Dunes National Lakeshore*

**FAMILY FUN**  
All **FREE** with a \$10 Park Pass



**CHALLENGE YOURSELF**  
In One of America's Most Beautiful **Natural** Settings

**DON'T MISS**  
**Sights, Shops & Sounds**

**Sleeping Bear Dunes VISITORS BUREAU**  
Visit us online for vacation and accommodations information [www.sleepingbeardunes.com](http://www.sleepingbeardunes.com)

**PLUS:** Lodging Information from the Area's Finest Properties



This year, discover the Sleeping Bear Dunes National Lakeshore, the National Park Service's sparkling jewel. You'll find 35 miles of sandy beaches on Lake Michigan, the world's largest moving dunes and 71,000 preserved and protected acres. From natural and historical attractions to programs presented by the rangers, Park visits are fun and remarkably affordable. A \$10 Park Pass for your vehicle is good for seven days!

For more about the Lakeshore, visit the National Park Service online at [www.nps.gov/slbe](http://www.nps.gov/slbe). Find area lodging and activities at Sleeping Bear Dunes Visitors Bureau: [www.sleepingbeardunes.com](http://www.sleepingbeardunes.com)

# discover

## Family Fun

Spend precious moments creating priceless family memories visiting the National Lakeshore's wide beaches, towering dunes, cool forests and shimmering waters. Within a day's drive of Chicago, Indianapolis, Cincinnati or Detroit, the Sleeping Bear Dunes offer fun-filled vacations in spectacular settings.

For the cost of a single movie ticket, your family will enjoy a week's worth of sunbathing on sugary beaches, swimming and paddling lakes and rivers, and hiking and picnicking along picturesque trails and ancient dunes. The Park's \$10 Pass keeps the pocketbook grounded but for family fun, the sky's the limit.



## Challenge Yourself

If you can drive it, you can bicycle it. Pedal winding highways, campground roads and old logging trails past scenic waterways and across forested hills and open meadows. Pierce Stocking Scenic Drive, M-109 and M-22 offer exhilarating inclines with breathtaking lake views. Get an upper body workout plying Lake Michigan's powerful waves in your sea kayak or canoeing the currents of the Betsie, Platte and Crystal rivers. With miles of bicycling and 21 inland lakes, the Lakeshore rewards visitors with an energizing, fresh-air "fix."

*Number one  
Midwest nature  
escape for  
families!*

– Disney's *Family Fun*

## Award Winning Golf



Awarded one of GolfWeek magazine's 2010 Best New Courses, **Manitou Passage Golf Club** is an Arnold Palmer signature course that was redesigned in 2009 by Palmer and rebuilt to become a premier destination course. It now offers five traditional tee boxes, strategically placed hazards, lush fairways and exceptional greens in one of the region's most spectacular natural settings. To complement that, there's unmatched service on the course and in the all-new clubhouse.

The course is located just south of the Manitou Passage on M-22 between Glen Arbor and Leland. See it online at: [www.manitoupassagegolfclub.com](http://www.manitoupassagegolfclub.com).

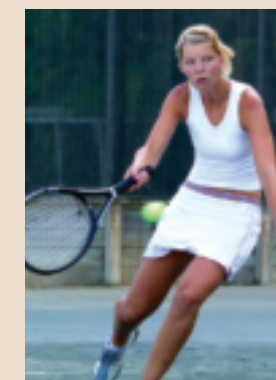
## Don't Miss Out

Historic lighthouses... quaint villages...gifted performers. The area offers impressive cultural opportunities, too.

Stop by the former logging town of Glen Haven, where history comes alive with a 1920s-era General Store, Blacksmith Shop, restored boats and Park museum life-saving demonstrations.

Stroll area villages to uncover local treasures in eclectic shops and galleries, or sample exquisite cuisine in scratch bakeries and restaurants. A self-guided winery tour with stops at Leelanau Peninsula tasting rooms pouring award-winning sips.

Internationally-acclaimed musical artists and dancers grace the evening stage at nearby Interlochen Center for the Arts, while Manitou Music Festival brings outstanding talent to our doorstep.



## Manitou Music Festival 2011 Performance Schedule

Studio Stage "rain" performances are held at Glen Arbor Town Hall. For more information and to purchase tickets in advance, visit [www.manitoumusicfestival.com](http://www.manitoumusicfestival.com)

### July

- 2 Northport Community Band, Athletic Club, 4pm
- 10 Paul Keller Orchestra, Dune Climb, 7pm
- 17 Mulebone, Studio Stage, 8pm
- 20 Michael on Fire, Studio Stage, 8pm
- 24 Will Pearsall & Chelsea Saddlers, Studio Stage, 8pm
- 28 Blackthorn, Bay Mtn at The Homestead, 7pm  
(If rain: Mountain Flowers Lodge)

### August

- 3 Goitse, Studio Stage, 8pm
- 7 RFD Boys, Studio Stage, 8pm
- 9 Summer Singers, Glen Lake Community Reformed Church, 7:30pm
- 17 Rita Hosking, Leelanau School, 8pm