



BONES TO BUGGIES



GIGANTIC TO GENTLE PREHISTORIC TO PEACEFUL BONES TO BUGGIES - A CULTURAL EDUCATIONAL EXPERIENCE TOUR

A NEW unique and engaging experience

Blending the ancient and modern worlds in one group tour itinerary.
Two group-friendly destinations for a 4 day-3 night experience.
A short hub & spoke concept that builds on culture, education, past and present.

South Bend, Indiana...Where You Can Bend Your Rules

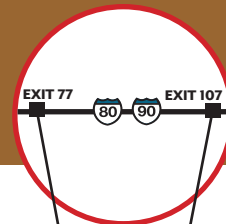
Welcome to The Bend, a place to explore both the well known and the roads less traveled. The University of Notre Dame and St. Joseph River define this place but no matter how you choose to explore, this is a place to embrace life's simple pleasures. Try your luck in South Bend! From the Luck of the Irish, to having some luck at Four Winds Casino, to digging and finding luck in a dinosaur fossil, South Bend's treasures await your enjoyment.

Shipshewana, Indiana...the Heart of Amish Country Indiana

Shipshewana is a one-of-a-kind destination to experience the simplicity of Amish culture, delicious foods and quality products they produce. Also enjoy quaint downtown shops, locally-produced meat and cheese, exciting outdoor recreation, world class entertainment and the Midwest's largest flea market.

This newest Midwest Group Tour Favorite Highlights:

- See Giant Prehistoric Beasts - Meet Gentle Amish people
- Visit Iconic National Treasures - Tour Authentic Off the Beaten Path Adventures
- Tour Behind the Scenes at a Chocolate Factory - See Buggy Parts and Pieces built before your eyes
- Tempt your tastebuds with delicious chocolate - Wear your stretchy pants for fried chicken, mashed potatoes, and pie... lots of pie
- Dig for Bones - Roll a pretzel
- Shop 'til you drop for food and swag, handmade and high style
- Hear the roar of T-rex then the rhythm of horse's clip-clops



South Bend - Shipshewana: 1 hour
South Bend - Indianapolis: 2.5 hours
Shipshewana - Indianapolis: 3 hours

Shipshewana
AT THE OF AMISH COUNTRY, INDIANA

Judy McConnell - Group Travel Manager
(260) 768-4008
judy@lagrangecountycvb.org
VisitShipshewana.org/groups

VISIT SOUTH BEND
MISHAWAKA

Nicole Lawler - Director of Engagement
(574) 400-4020
nlawler@visitsouthbend.com
VisitSouthBend.com/meetings-and-groups



Walk in the shadows of the Golden Dome at Notre Dame

Visit the legend and see the majesty of the Golden Dome, Basilica of the Sacred Heart and Touchdown Jesus.

Dig for Bones at the Indiana Dinosaur Museum

Immerse yourself in prehistoric times with interactive displays and exhibits.

South Bend Chocolate Factory Tour & Museum

Take a factory tour, see one of the largest collections of chocolate memorabilia in the world, including a 1,300-year-old Mayan chocolate pot, taste free samples.

Lunch at South Bend Public House

Home of the upside down burger, craft brews and tasty libations.

Play, Eat and Stay at the Four Winds Casino Hotel

Enjoy an evening experience filled with top notch restaurants, an expansive gaming floor, entertainment center and 23-story hotel.

Studebaker Museum and Oliver Mansion Tour

Tour a 38-room historic Victorian Mansion and see historic cars including the largest Presidential Carriage Collection in the world.

Eat lunch in a Mansion

Dine in the former Studebaker family mansion originally built in 1889.

See an Amish Buggy Harness and Horseshoe Shop

Step inside the Amish Harness & Horseshoe Shop and learn how high-quality craftsmanship assists the Amish community transportation system.

Watch Amish buggy wheels being made

Watch professional Amish craftsmen create, shape and build high quality buggy wheels for strength, dependability and safety.

Visit Hoosier Buggy

All of the parts and pieces of an Amish buggy come together inside Maynard Hostetler's Buggy Shop.

Dinner on an Amish farmstead

Seth, and his Mom Elaine, welcome you to their farmstead where you'll learn all about raising buggy horses & Clydesdales before delighting in a homecooked, authentic Amish meal.

Rest for the night in a locally-owned boutique hotel

Unwind and relax after a full day inside one of two locally owned, themed, boutique, resort type hotels, complete with deluxe breakfast buffets and amenities included.

Watch baskets being made Off the Beaten Path

See specialty-made baskets assembled by hand at Teaberry Wood Products.

Shop where the Amish shop

Shop the Amish-owned bulk food store, see the special collection of antique toys & pedal cars.

Roll your lunch at Ben's Pretzels

Hear the history of the pretzel while twisting your own treat, then delight in the pretzel pocket luncheon.

Antique Tractors and a Dog who Churns Butter

Meet Merv, the Amish antique tractor collector, on his farm along with "man's best friend" who can churn butter.

Visit the Buggy Boneyard

Snap selfies with unique Amish buggies and carriages at Glicks, where buggies past their prime are sold.

Feast on the Famous Blue Gate Buffet

Enjoy the delicious feast found at the Blue Gate Buffet complete with family farm favorites including a pie & ice cream bar.

Tap your Toes at the Blue Gate Theatre

From top name artists to family-friendly musicals, there is always something on the stage to enjoy to top off your evening in Shipshewana.

Auction 101 at the Flea Market

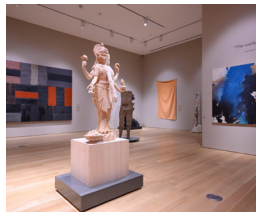
Learn from the Amish auctioneer the lingo, tips and tricks to bid at a real auction. Try your skills or shop the Midwest's Largest Flea Market.

Learn the History of the Amish faith

Visit Menno-Hof and enjoy immersive multimedia presentations and hands-on displays about the Amish life and faith over 500 years.

Ride a carousel and shop downtown Shipshewana

Explore over 75 shops in a two block radius in downtown Shipshewana including the popular Davis Mercantile featuring the hand-carved carousel.



Trip Planning & Group-Friendly Lodging

- South Bend
 - Four Winds Casino Hotel
 - Embassy Suites
 - The Inn at Saint Mary's

- Shipshewana
 - Blue Gate Garden Inn & Conference Center
 - Farmstead Inn & Conference Center
 - Van Buren Hotel

Please contact Judy McConnell or Nicole Lawler to start planning today!