



**Southern Bleacher:
Experience You Can Trust**

Stadiums • Grandstands • Bleachers



Bentonville West High School

Centerton, AR



Brandon Valley Baseball Assoc.

Brandon, SD



DETAILS

2,650 Seat grandstand. 22 and 18 rows x 246'. IL2K decking system. 10' x 36' Two story sloped and straight front pressbox and canopy. Our industry leading Clear-Span Foundation offers plenty of useable space under the grandstand for ticket booths, concessions, locker rooms and storage. **Project notes:** This grandstand features a stadium chair section in team blue accented with gold step risers. Both standard chain link and our Vertical Rail are used to protect fans. The Vertical Rail is a rich matt black and contrasts nicely against the silver shine of the aluminum.

Photo @ NWA Photography, Inc.

DETAILS

412 Seat grandstand. 12 rows x 66'. IL2K decking system. Designed, manufactured and installed by Southern Bleacher Co. **Project notes:** Red bench seat backs and black risers add plenty of personality to this smaller grandstand.

Photo @ Aaron Packard Photography

Since 1946, Southern Bleacher has set the standard for high school bleachers, college stadiums, fairgrounds, speedways and more. Fans in every U.S. state and Canada cheer from our grandstands.

With more than three million seats to our name in the past seven years alone, no one comes close to our experience. Financially sound with no influence from investors, our customers rest easy knowing we'll be here for decades to come. By not outsourcing our aluminum or steel fabrication, we control both quality and schedule, and a veteran project manager is your single point of contact, your advisor and ally, from your complimentary design through your stadium build and beyond. Our many valuable services include providing seating layouts, building code reviews, budget estimates, plan approval assistance, specifications and technical drawings. No matter the size, scope and type of project - professional, collegiate or a secondary school sports facility, our expertise and dedication to excellence will result in first class stadiums, grandstands and bleachers for your budget. ■



VISIT OUR WEB SITE:
www.southernbleacher.com
 or CALL TOLL FREE:
 1.800.433.0912



⌂ **University of North Texas**
Denton, TX

Color plays an important role in the sporting experience.

Team pride, spirit and inclusion all increase with the use of color. The University of North Texas uses color very effectively. Although their official mascot is an eagle, Mean Green epitomizes the dedication and resolve of UNT athletes and fans. The soccer, track and field stadium features bold use of color in stadium chairs, risers, front facade and canopy. Notice the outside finish of alternating green and silver panels.



DETAILS

1,062 Seat grandstand. 10 Rows x 222'. IL2K decking system. Two 8' x 24' Pressboxes. 308 Mean Green stadium chairs. Architect: Brown Reynolds Watford Architects. Manufactured and installed by Southern Bleacher Co. **Project notes:** The University of North Texas is serious about their green. Southern Bleacher made sure that the stadium chairs, risers and bleacher facade was up to their green expectations. Photo @ Todd Brasher



White River School District
Buckley, WA

DETAILS

1,422 Seat roofed grandstand. Tongue & Groove decking system. 20 Rows x 142'. 9' x 25' Pressbox. Architect: McGranahan Architects. Note the use of team colors: gold risers and maroon facades add Hornet pride to the grandstand. In areas of the country where rainfall is ever present, a roofed facility is a must for fan comfort. Manufactured and installed by Southern Bleacher Co. **Project notes:** Great use of contrasting team colors. Gold risers contrast with the maroon facades. Our Vertical Rail replaces standard chain link.

Photo @ Glen Davis, Legenday Portraits

Southern Bleacher venue options including integral roof systems, mitered designs, press boxes, sky boxes and suites, Clear-Span foundations and stadium additions. We are the industry innovators in decking and seating options.

Your stadium project is greatly enhanced when you work with our professionals. With years of experience and great fans of all sport, they are the most knowledgeable in the industry. We can help define your stadium with the amenities that today's sports enthusiasts and owners expect. Our industry leading concourse design with a Clear-Span foundation offers excellent accessibility for under-stadium storage, concessions, meeting rooms and secure passageways. Southern Bleacher can incorporate press boxes, mezzanines and suites into your facility. And our extensive range of combinable seating systems enables you to be creative while meeting design requirements and your budget. For the best value, with industry defining innovations that appeal to owners and fans alike, Southern Bleacher is the best choice for your project. ■



VISIT OUR WEB SITE:
www.southernbleacher.com
or CALL TOLL FREE:
1.800.433.0912



Breckenridge Little League Baseball

Breckenridge, TX

DETAILS

802 Seat mitered roofed grandstand. 10 Rows x 124'. IL2K decking system. 8' x 24' Pressbox. Designed, manufactured and installed by Southern Bleacher Co.

Project notes: Contrasting risers add visual interest.

Photo @ Tim Nelson



Arcadia All Florida Championship Rodeo, Inc.

Arcadia, FL

TESTIMONIAL

"This is just a lot more comfortable and there's not a bad seat in the house. We really wanted to make this the best it can be."

**KATHERINE MARKS
EXECUTIVE DIRECTOR**

DETAILS

7,796 Seat mitered stadium.

Architect: Neu Consulting, LLC.

Manufactured and installed by Southern Bleacher Co. **Project notes:**

Black and blue stadium chairs follow precise site lines for the most comfortable seats in the house. No matter where you are seated, Southern Bleacher brings the action up close and personal. Multi level mitered rodeo stadium puts spectators on the edge of the arena and their seats for the best in rodeo action.

Photo @ Marc Vaughn Productions



Oregon Trail Park Stadium

Gering, NE



DETAILS

With large screen TVs and other viewing enhancing amenities at home, fans want comfort and a great experience when they attend games and events. Southern Bleacher's mitered stadiums put fans right at the edge of the action and with stadium chair seating, give everyone the best seat in the house.

865 Seat roofed LT grandstand. 7/11 Rows x 127'. IL2K decking system. 391 Stadium chairs. Designed, manufactured and installed by Southern Bleacher Co. **Project notes:** Green stadium chairs, step risers and seating section risers add individuality to this mitered project.

Photo @ Spectrum Photographics

Note: The press box is by others.

Our team of highly skilled regional representatives care for their customers from beginning to end. The man who takes your first call also designs your stadium. He works with your board, your architect and contractors and verifies quality, making sure every detail is right.

Southern Bleacher Company is the nation's largest and oldest stadium, grandstand and bleacher manufacturer. Our projects are in place at the top professional sports venues, collegiate and secondary schools, rodeo and equestrian arenas, fairgrounds, NASCAR tracks and private entertainment venues. Southern Bleacher builds first class stadiums that offer excellent value. A Southern Bleacher stadium is a rock solid investment for sports programs and venues of every variety and size. ■



VISIT OUR WEB SITE:
www.southernbleacher.com
or CALL TOLL FREE:
1.800.433.0912



Odessa College

Odessa, TX

DETAILS

240 Seat roofed LT mitered grandstand. 6 Rows x 98'. IL2K decking system. 12' x 20' Pressbox. Architect: JSA Architects. Manufactured and installed by Southern Bleacher Co.

Project notes: Bench seating features team blue back rests. Contrasting black Vertical Rail replaces standard chain link for individuality.

Photo @ Hendershot Photography

DETAILS

719 Seat Hillside grandstand.

14 Rows x 114'. Tongue & Groove decking system. 98 Stadium chairs. 8' x 30' Sloped front pressbox with observation/video deck. Architect: Booth Ern Straughan & Hiott Inc. Manufactured and installed by Southern Bleacher Co.

Project notes: Southern Bleacher's experts can make sure that your project fits perfectly within the parameters of your space. Hillside grandstands have long been a specialty. Mount Dora features team blue stadium chairs, risers and a facade. The added trim along the top of the pressbox is the finishing touch.

Photo @ Marc Vaughn Productions



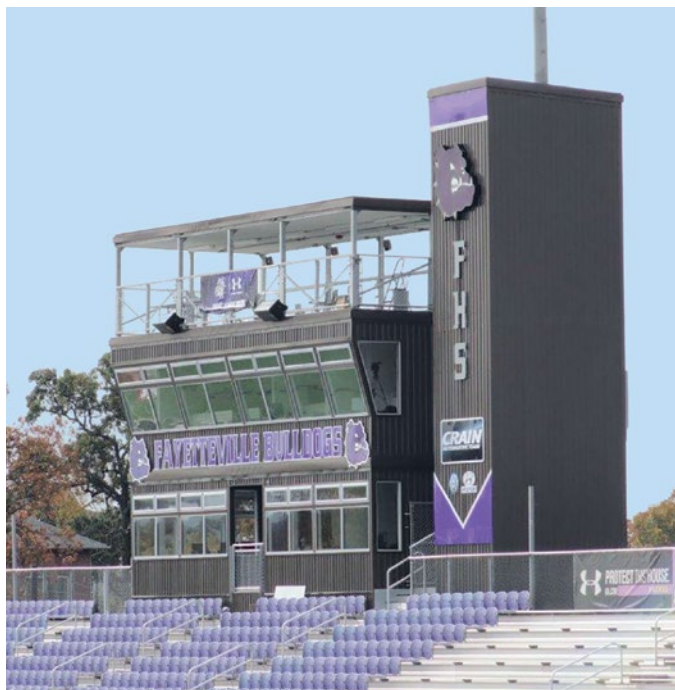
Mount Dora Christian Academy

Mount Dora, FL

PRESSBOXES

We think pressboxes are just one more way to express your venue's team spirit. Stacked pressboxes with window choices like our sloped front, enhance the view of the field.

Door placement is another option – front along with the standard end. An elevator that opens into each of the boxes and the video platform saves time and protects costly equipment. The expansive space offers room for team and sponsor signs.



See cover project for a design similar to the one above.



Vertical glass windows with rolling security shutters. Custom Vertical Rail video platform. Team color paneling adds individuality. The addition of a canopy is one of our options.

PRESSBOXES

At Southern Bleacher, we are experts at creating a state-of-the-art pressbox perfectly designed for your venue. With our variety of options, pressbox possibilities are limitless. Southern Bleacher pressboxes come standard with galvanized steel support that is connected to the rear of the stadium and is independently supported by galvanized steel columns and a concrete foundation. Standard features are exteriors of 26-gauge R paneling for strength and durability. Interiors have anodized aluminum counter tops, acoustic ceiling tiles and florescent lighting. From there it is up to you. We offer several window options and interior enhancements for a pressbox as high or as low tech as you please.

A venue's pressbox is not only a necessary component, but it can add individuality and personality to any stadium or grandstand.

We offer a variety of exterior facade colors (download a chart from our website). Faux brick, stone and block facades can blend your venue into architectural surroundings or make a statement. Roof platform options include our Vertical Rail safety fencing in colors and also a colored vinyl-coated chain link. Look at the projects throughout the brochure for inspiration and ideas.

A Southern Bleacher state-of-the-art pressbox or stadium sky box gives you the opportunity to add individual style to your venue while creating a high-value, functional space for announcers, media and special guests.

Southern Bleacher's state-of-the-art pressboxes are an opportunity to individualize a stadium. Pressboxes are no longer an afterthought or a necessary addition. A Southern Bleacher pressbox will make a statement – it is up to you just how bold you want that statement to be. We offer a number of ways to create an individual look for your stadium sky box / press box, allowing you to create exactly the pressbox you envision: A wide variety of colors for exterior panels; faux brick, stone and block facades to blend your venue into architectural surroundings or create a unique architectural statement. If you've opted for a roof platform, chain link or vertical rails safety fencing, including options for colored rails or colored vinyl-coated chain link. ■



VISIT OUR WEB SITE:
www.southernbleacher.com
or CALL TOLL FREE:
1.800.433.0912



Beaverton School District

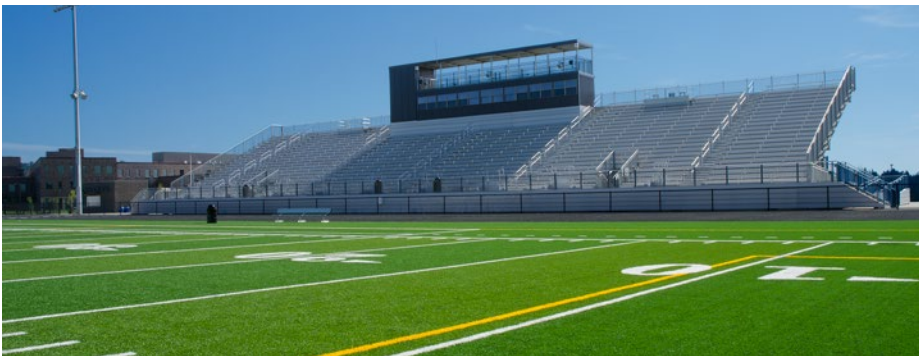
Beaverton, OR



DETAILS

2,005 Seat Grandstand. 16 Rows x 247'. IL2K decking system. 8' x 54' Pressbox. Architect: Bora Architects, Inc. Manufactured and installed by Southern Bleacher Co. **Project notes:** This pressbox features an elevator. It combines the best of a pressbox and a covered observation/video deck; accommodating overflow press and personnel. Standard chain link is replaced by our innovative Vertical Rail on the deck and throughout the grandstand.

Photo @ DCB Photographic Imagery, LLC.



Loyola Marymount University

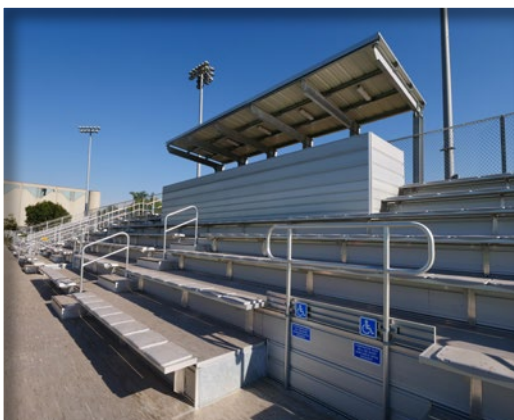
Los Angeles, CA



DETAILS

914 Seat Soccer LT Grandstand. 10 Rows x 211'. IL2K decking system. Announcer's booth. Architect: DRW Associates. Manufactured and installed by Southern Bleacher Co. **Project notes:** The open air announcer's booth is an affordable option for moderate climates. The canopy adds a nice architectural emphasis while offering plenty of protection from the elements.

Photo @ Richardson Photography





Grand Canyon University
Phoenix, AZ



DETAILS

Southern Bleacher's expert team is able to design and fabricate unique elements to set your project apart. Our vast experience is also invaluable in working with architects and other project participants to save time, money and end with a job completed on time and within budget.

1,260 Seat combination bleacher. 18 and 14 Rows x 278'. IL2K decking system. 470 Stadium chairs.

Architect: Suoll Architects. Manufactured and installed by Southern Bleacher Co.

Project notes: This baseball complex gives the appearance of a mitered stadium with the combinations of bleachers framing the field. Site lines are terrific. Team color in chairs and bench seat backs add unity to the components.

Photo @ Tim Roberts Photography

Note: The press box, concessions and roof are by others.

With more than seven decades of experience, the experts at Southern Bleacher understand the myriad of unique challenges posed by sporting venues.

We think you'll agree – with our vast experience in manufacturing stadiums, grandstands and bleachers, Southern Bleacher understands the intricate details of the design and planning of sporting and entertainment venues. In addition, Southern Bleacher's long list of satisfied clients is a testament to how we conduct our business. We take great pride in treating our clients with respect and honesty and we conduct our business with integrity and class. Not all companies can state this. Want to see more? You can spark your imagination by visiting our website at www.southernbleacher.com. When you're ready to begin, call us toll free or send an e-mail to info@southernbleacher.com. Our dedicated sales professionals are the most knowledgeable in the stadium, grandstand and bleacher industry. Each one of them can help you create a facility that celebrates sport in all its forms. ■



VISIT OUR WEB SITE:
www.southernbleacher.com
or CALL TOLL FREE:
1.800.433.0912



⤴ **Mount Olive Township School District**
 ⤵ Flanders, NJ



DETAILS

1,790 Seat roofed grandstand. 17 Rows x 215'. Tongue & Groove decking system. 812 Camatic Quantum stadium chairs. 10' x 30' Pressbox. Architect: Gianforcaro Architects Engineers & Planners. Manufactured and installed by Southern Bleacher Co. **Project notes:** The swooping curved roof suggests the sail of a marauding vessel. The contrasting black supports are a dramatic contrast to the white underside of the roof. The enclosed grandstand back is the perfect opportunity to showcase team graphics. This grandstand uses color for maximum effect.

Photo @ KSN Images



DETAILS

2,009 Seat grandstand. 22 Rows x 169' IL2K decking system. 8' x 72' Sloped front pressbox with observation/video deck. Architect: Duplantis Design Group PC. Manufactured and installed by Southern Bleacher Co. **Project notes:** An interesting mix of maroon and ash gray with white step risers set E.D. White apart from other larger grandstands.

Photo @ Kirk Voclair

At Southern Bleacher, problem solving is our specialty!

We understand it can be disruptive to work with one person throughout the RFP and sales process only to be passed off to someone new when you move into design. At Southern Bleacher, your salesman is your designer, just as he's your project manager through fabrication and the on-site build. That continuity is only possible because of the unmatched expertise of our regional representatives – knowledge and experience that lets every one of them not just design your project customized to the requirements of your site but also adapt those designs in a flash if unforeseen issues arise.

Bottom line, the first time and every time you contact Southern Bleacher, you've reached someone who can help, without the need to pull in an engineer (most of our reps are engineers) or seek solutions from an architect (we help architects solve problems all the time). Your representative has not only the experience to solve your challenges but also the authority to make those calls himself. ■



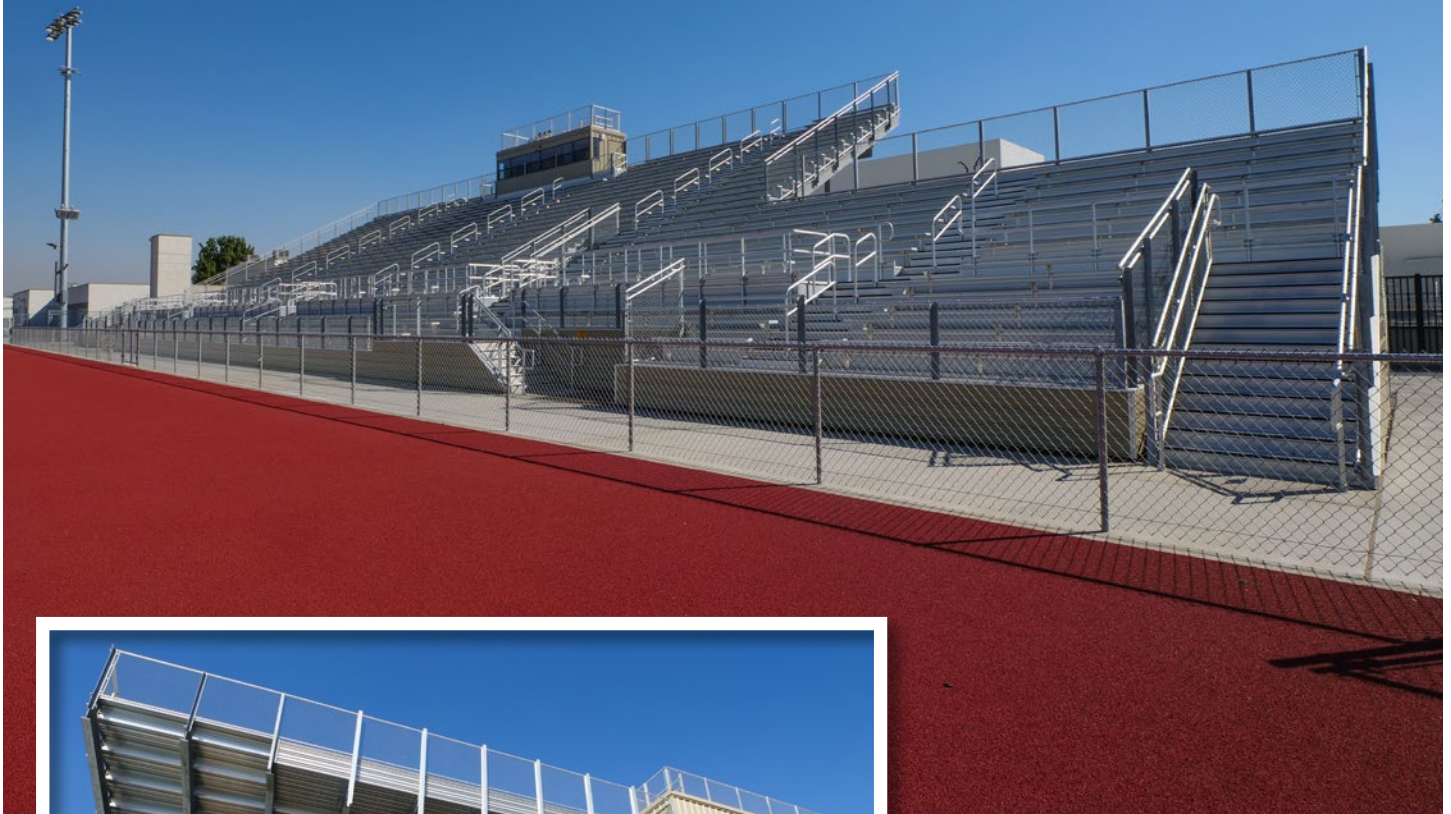
VISIT OUR WEB SITE:
www.southernbleacher.com
or CALL TOLL FREE:
1.800.433.0912

Located in Texas, everyone at Southern Bleacher understands that high school football isn't a game. It's a legacy and a way of life. Southern Bleacher's high school football stadiums inspire team pride and give fans (that's short for "fanatics," you know) the best seat in town. If you're in the market for a stadium, expansion or upgrade, this brochure features examples of the best high school football stadiums in the country.



Garden Grove Unified School District

Garden Grove, CA



DETAILS

2,262 Seat grandstand. 12/26 rows x 204'.

Tongue & Groove decking system. 8'x30' Pressbox with observation/video deck. Architect: Ghataode Bannon

Architects. Manufactured and installed by Southern Bleacher Co. **Project notes:** An easily accessible design and configuration sets this grandstand apart. Southern Bleacher is second to none in our knowledge of the many requirements and guidelines a project must address. We are your architect's partner and helper – saving time and money in the process.

Photo @ Richardson Photography

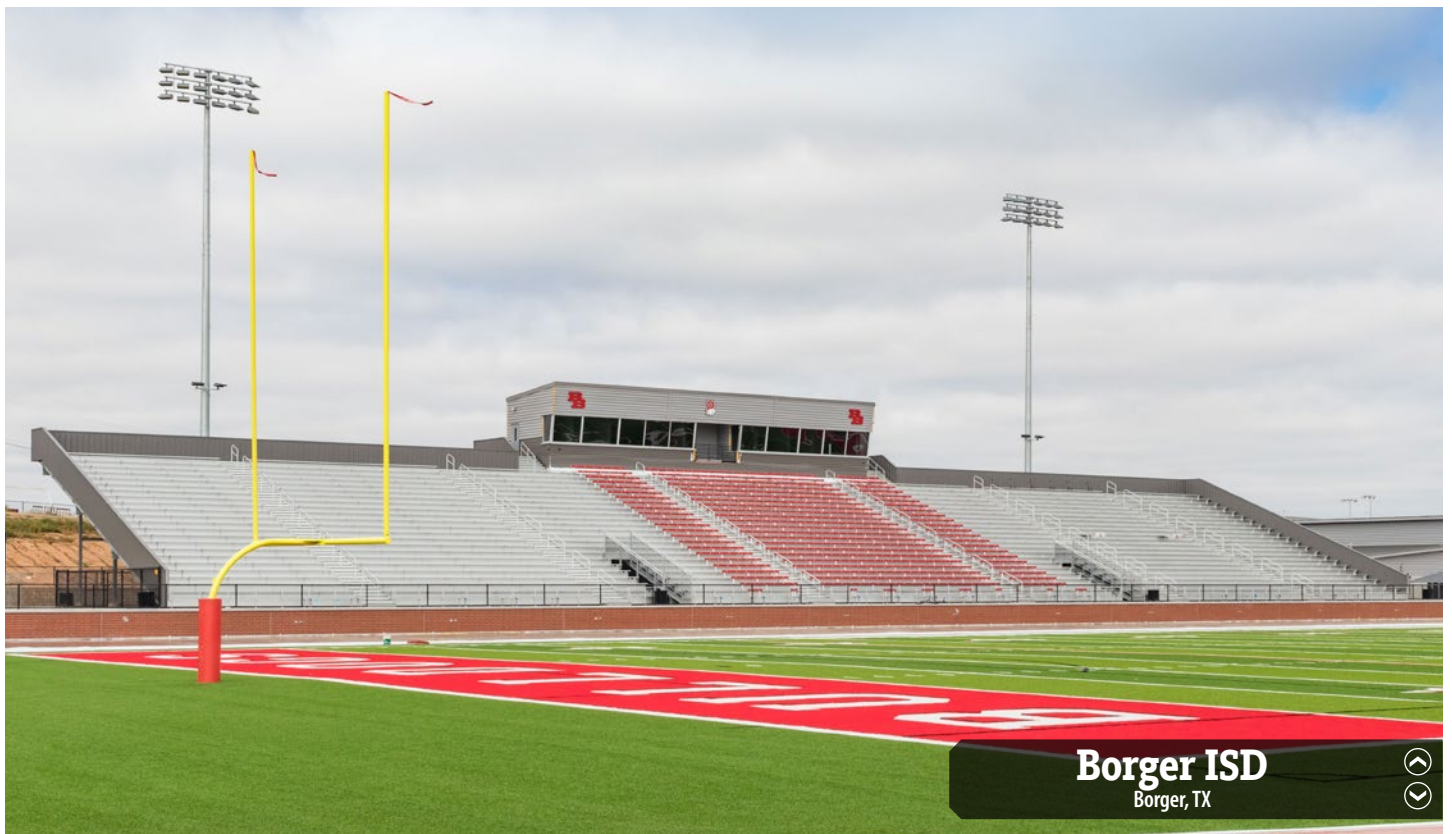
Attention to detail can be found in every element of a Southern Bleacher project. From the field side to the substructure, our capabilities and pride in craftsmanship is evident for all to see.



Roman Catholic Diocese of Harrisburg
Lancaster, PA

DETAILS

1,519 Seat grandstand. 15 Rows x 198'. LT design with Tongue & Groove decking system. 8' x 30' Sloped front pressbox. Architect: Derck & Edson Architects. Manufactured and installed by Southern Bleacher Co. **Project notes:** Bold use of color in team gold and purple risers. *Photo @ KSN Images*



Borger ISD
Borger, TX

DETAILS

3,710 Seat grandstand. 23 rows x 282'. Tongue & Groove decking system. Architect: Parkhill Smith & Cooper, Inc. Manufactured and installed by Southern Bleacher Co. **Project notes:** Bench seating is enhanced with team red seat backs. Standard chain link is replaced with solid gray R-panel for extra color. *Photo @ Brent Cavanaugh Photography*

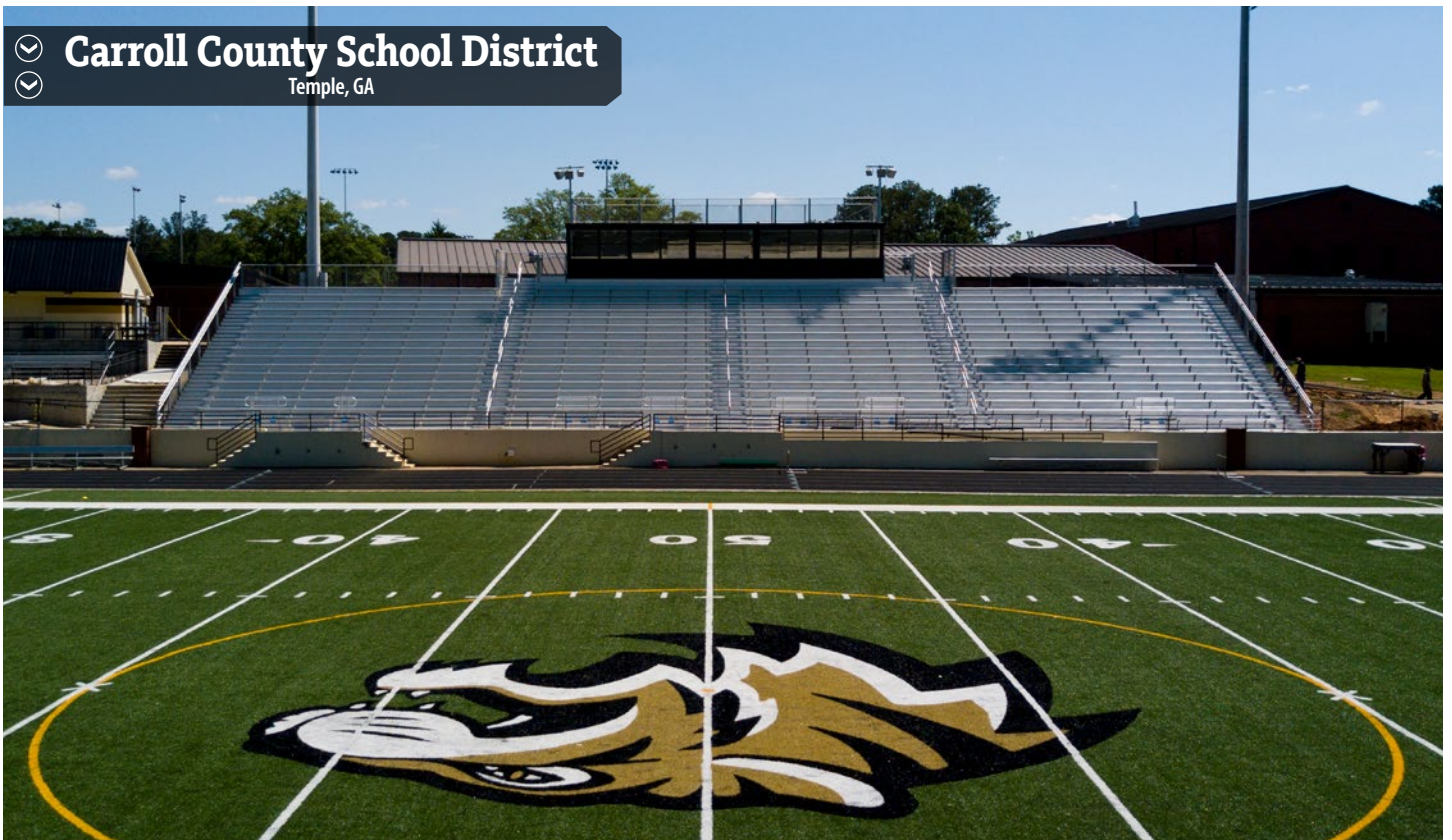
Note: The press box is by others.



Cutler-Orosi Jt. Unified School District
 Orosi, CA

DETAILS

2,825 Seat Grandstand. 26 rows x 211'. Tongue & Groove decking system. 8' x 42' Pressbox with observation/video deck. Architect: Teter, LP. Manufactured and installed by Southern Bleacher Co. **Project notes:** Vertical Rail is used extensively to accent and enhance as well as offer safety. *Photo @ Terry O'Rourke*



Carroll County School District
 Temple, GA

DETAILS

1,531 Seat grandstand. 18 Rows x 154'. Tongue & Groove decking system. 10' x 50' Sloped front pressbox. Architect: Southern A&E LLC. Manufactured and installed by Southern Bleacher Co. **Project notes:** The pressbox's black facade contrasts with the grandstand and painted concrete front facade. *Photo @ McClain Photography*



Granite Falls School District
Granite Falls, WA

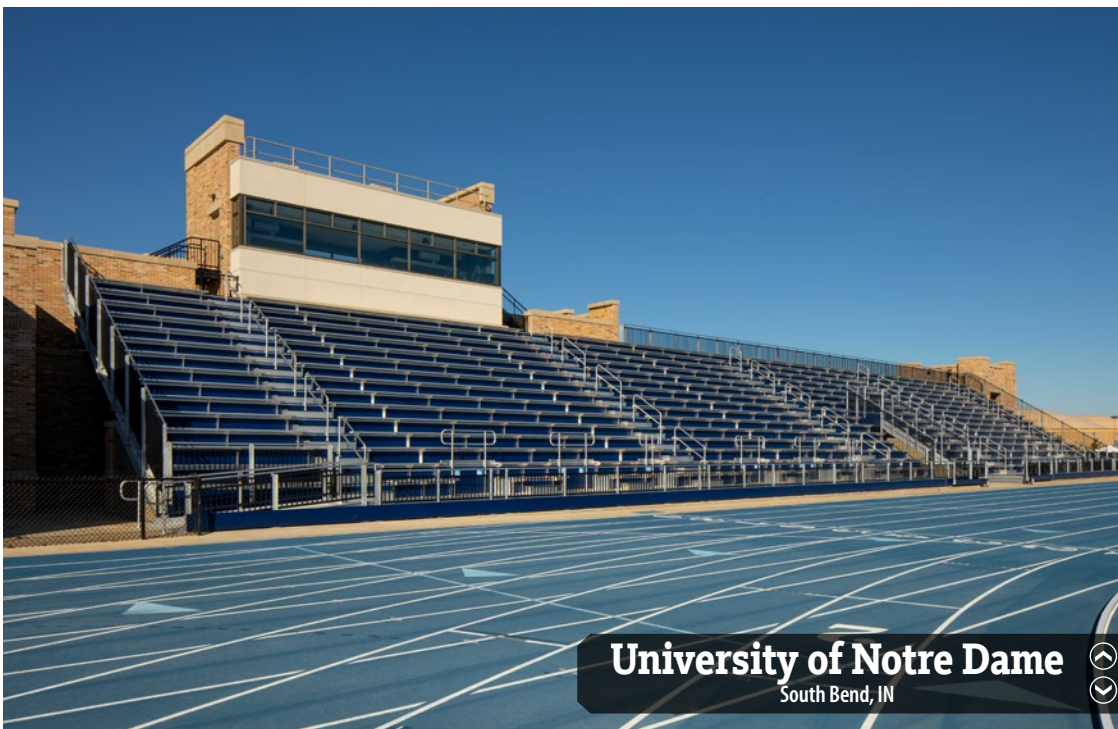
As you can see above, Southern Bleacher crafts its grandstands to be accommodating to all fans. By doing so, your facility will be code compliant. Not addressing codes will cost time and money. Our experts will guide you through complicated regulations.

DETAILS

1,684 Seat roofed grandstand. 16 Rows x 208'. IL2K decking system. Architect: Hutteball + Oremus Architecture. Manufactured and installed by Southern Bleacher Co.

Project notes: Two tiers of seating offer both covered and open seating.

Photo @ Glen Davis, Legendary Portraits



University of Notre Dame
South Bend, IN

DETAILS

1,548 Seat grandstand.
15 rows x 188'. IL2K decking system
Architect: Sink Combs Dethlefs.
Manufactured and installed by Southern Bleacher Co. **Project notes:** Vertical Rail replaces standard chain link for safety. Blue risers are enhanced by the Irish Blue track. This track and field grandstand is our second project for the University. The previous project was a lacrosse and soccer grandstand.

Photo @ Tirotta Photo Productions

Note: The press box is by others.



Shoreham-Wading River CSD

Shoreham, NY

DETAILS

979 Seat Grandstand. 10 Rows x 186'. IL2K decking system. 8' x 12' Pressbox. Architect: Burton Behrendt Smith. Manufactured and installed by Southern Bleacher Co.

Photo @ Thomas Decker Studio, Inc.



East Ramapo Central School District

Spring Valley, NY

DETAILS

1,587 Seat grandstand. 16 rows x 180'. Tongue & Groove decking system. 8' x 36' Sloped front pressbox with observation/video deck. Architect: Fuller D'Angelo P.C. Manufactured and installed by Southern Bleacher Co. **Project notes:** Red risers and faux concrete block facade in team color.

Photo @ KSN Images

Rankin County School District

Brandon, MS



DETAILS

4,094 Seat Grandstand. 29 Rows x 240'. IL2K decking system. 1,000 Stadium chairs. 11'9" x 72' Sloped front pressbox. Architect: JH&H Architects. Manufactured and installed by Southern Bleacher Co. **Project notes:** Understated color makes an impact. Red step risers, black chairs and facade break up the vast expanse of silver. The team benches with red back rests contrast against the black facade. *Photo @ Broadcast Media Group*



Rankin County School District

Brandon, MS

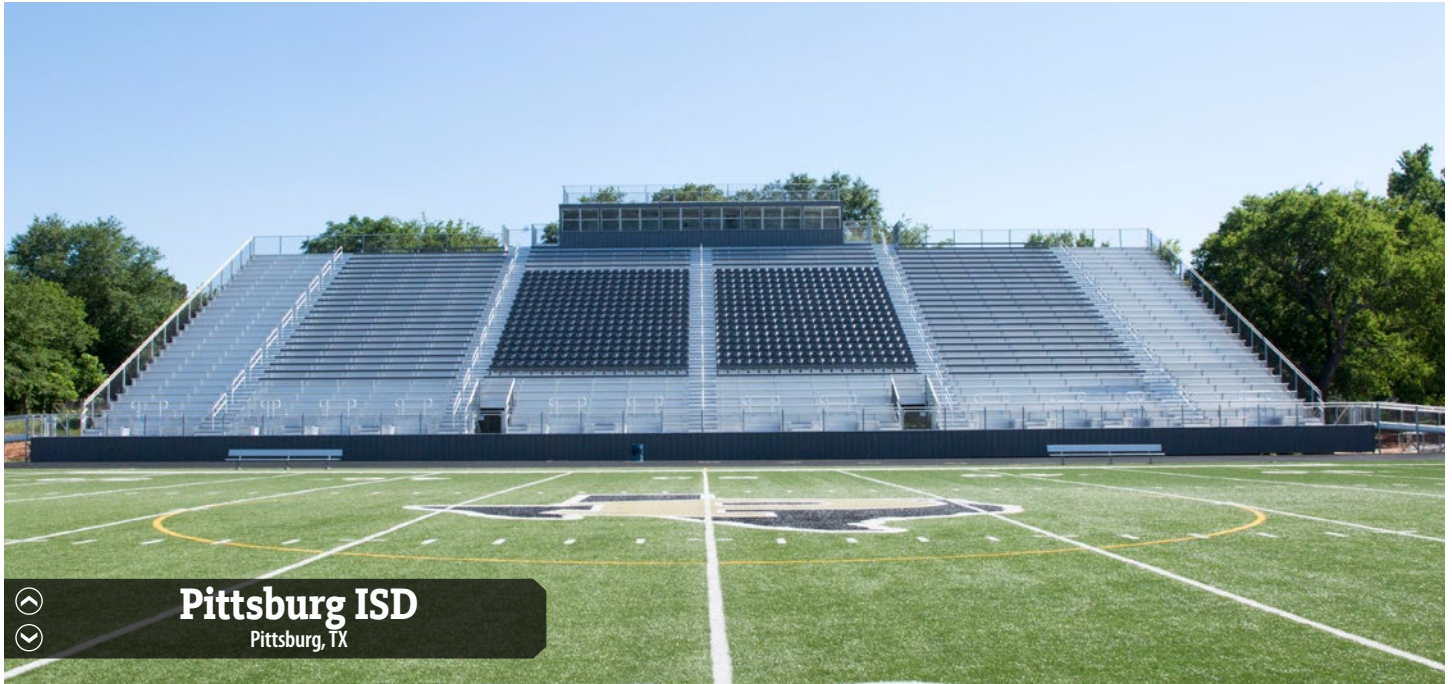
DETAILS

288 Seat "bandstand". 12 rows x 48'. LT Design with IL2K decking system. Architect: JH&H Architects. Manufactured and installed by Southern Bleacher Co.

Photo @ Broadcast Media Group

Bands are an integral part of the high school and collegiate sporting experience.

The band's seating requirements are often after thoughts if thought of at all. When seated with spectators, getting on and off the field or simply having room for instruments can be cumbersome and even difficult. Hence the creation of the Band Grandstand or Bleacher. These "Bandstands" offer easy access to the playing field for half time shows and their placement along the field showcases the band's sound for additional spirit.



Pittsburg ISD
Pittsburg, TX

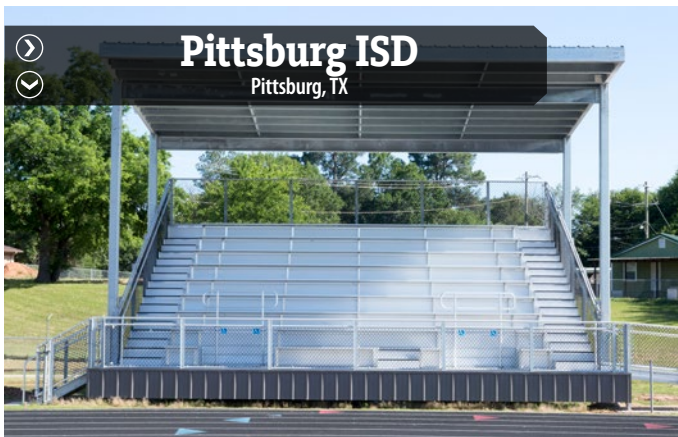
DETAILS

2,926 Seat Grandstand. 28 Rows x 192'. IL2K decking system. 608 Stadium chairs. 8' x 60' Sloped front pressbox with observation/video deck. Designed, manufactured and installed by Southern Bleacher Co. **Project notes:** Blue facade on pressbox adds extra color. Unique configuration of team blue chairs, bench seating with blue back rests and basic bench seating on grandstand ends. *Photo @ Gene's Photography*

TESTIMONIAL

"Southern Bleacher did a truly outstanding job in constructing the bleachers at Pirate Stadium. The preliminary planning was very detailed and thorough as we considered the needs at our facility. You provided us with excellent suggestions, while listening carefully to our wants and needs. You were careful to get our approval before moving forward with any aspect of the project. Thank you for making this a facility that will be used for generations to come."

JUDY POLLAN
SUPERINTENDENT



Pittsburg ISD
Pittsburg, TX



DETAILS

136 Seat roofed bandstand. 8 Rows x 34. IL2K decking system. Designed, manufactured and installed by Southern Bleacher Co. **Project notes:** Bandstand is custom designed with deeper treads to accommodate instruments. *Photo @ Gene's Photography*



Fort Stockton ISD
Fort Stockton, TX



DETAILS

172 Seat roofed bleacher. Two 6 row x 33'. IL2K decking system. 8' x 12' Pressbox. Architect: Parkhill Smith & Cooper. Manufactured and installed by Southern Bleacher Co.

Project notes: Bench seating with blue back rests and blue trim on the roof are small but impactful uses of color.

Photo @ H&T Photography



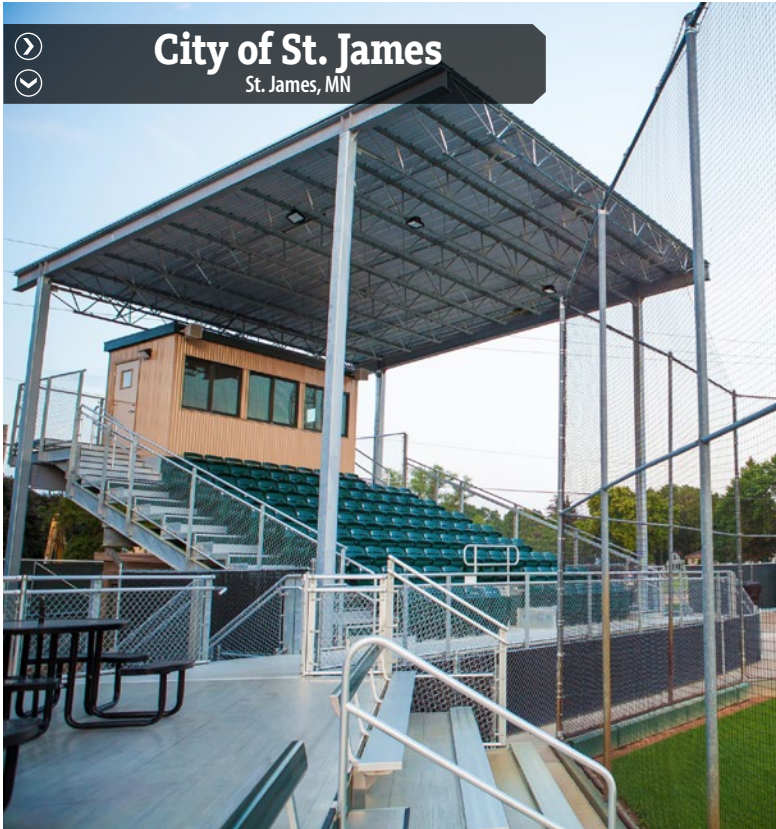
Madera Unified School District
Madera, CA



DETAILS

677 Seat mitred bleacher. 5 and 6 rows x 192'. Tongue & Groove decking system. 8' x 24' Pressbox. Architect: Alan Mok Engineering. Manufactured and installed by Southern Bleacher Co. **Project notes:** Bench seating with blue back rests and blue trim on the pressbox visually tie this bleacher group together.

Photo Terry O'Rourke



City of St. James

St. James, MN



DETAILS

176 Seat roofed grandstand. 9 Rows x 30'. 4 Row x 36' bleacher along first baseline. 114 Stadium chairs on grandstand. Bench seating with green backrests tie the bleacher nicely to the grandstand. Designed, manufactured and installed by Southern Bleacher Co. **Project notes:** This grandstand offers the best seat to all 176 fans with green stadium chairs.

Photo @ SR Photography

Note: The press box is by others.

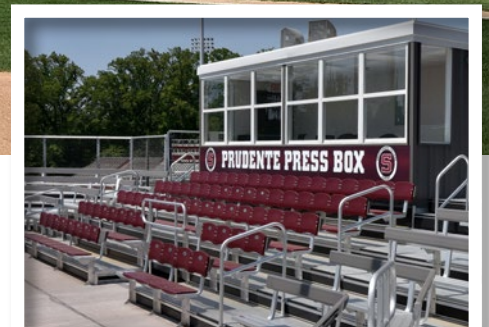


Swarthmore College

Swarthmore, PA

DETAILS

242 Seat 5 row non-elevated angle frame bleacher. 75 Elite Seat IIs. 8' x 24' Pressbox. Designed, Manufactured and Installed by Southern Bleacher Co. **Project notes:** Even the smallest projects can stand out with strategic use of color. Maroon Elite Seat IIs and pressbox facade anchor this angle frame bleacher. Photo @ KSN Images





DETAILS

260 Seat grandstand. 8 rows x 66'. 8' x 30' Sloped front pressbox. IL2K decking system. Architect: DLR Group. Manufactured and installed by Southern Bleacher Co.

Project notes: Top two rows of bench seating have grey back rests. Grey seating and step risers add contrast. *Photo @ Jonathan Betz Photography*



DETAILS

681 Seat roofed mitered grandstand. 16 Rows x 104'. Full Deck decking system. 8' x 12' Pressbox. Designed, manufactured and installed by Southern Bleacher Co.

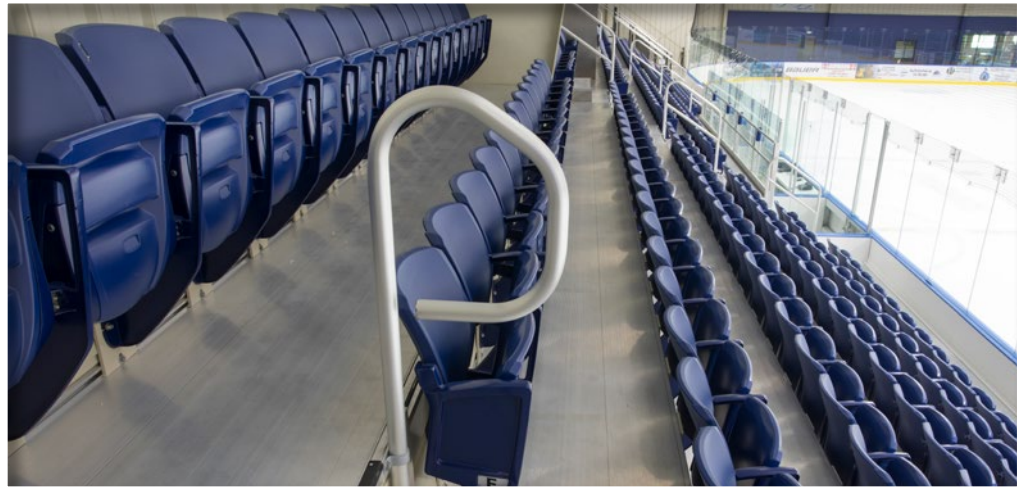
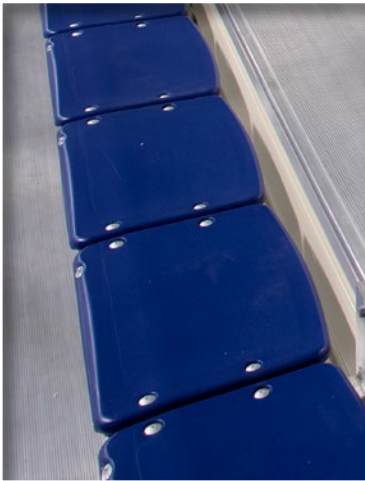
Project notes: Color adds visual appeal to this mitered project in team blue risers.

Photo @ Barney's Studio



Trine University

Angola, IN



DETAILS

637 Seat LT Design. 7 rows x 198'. IL2K decking system. 358 Stadium chairs. 272 Elite Seats. Architect: Design Collaborative Architects + Engineers. Manufactured and installed by Southern Bleacher Co. **Project notes:** This LT Design bleacher features a combination of stadium chairs and our own innovative Elite Seat.

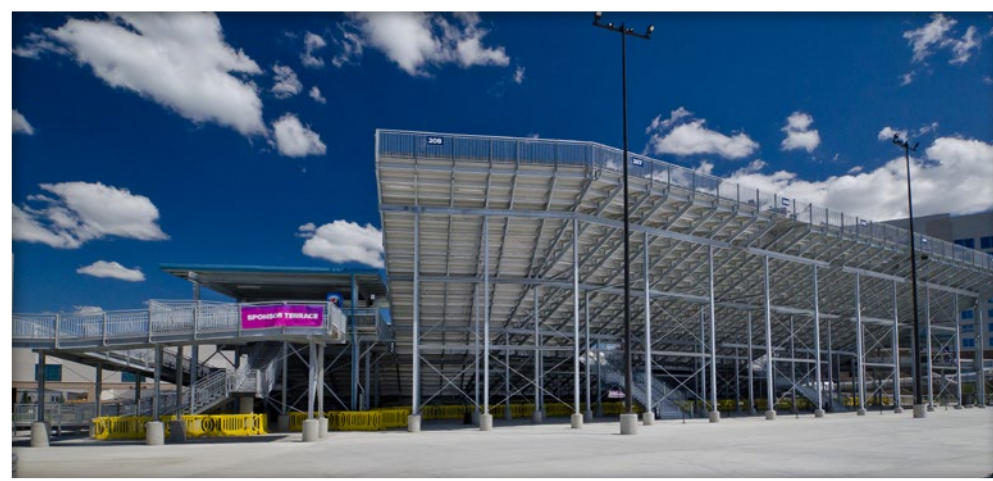
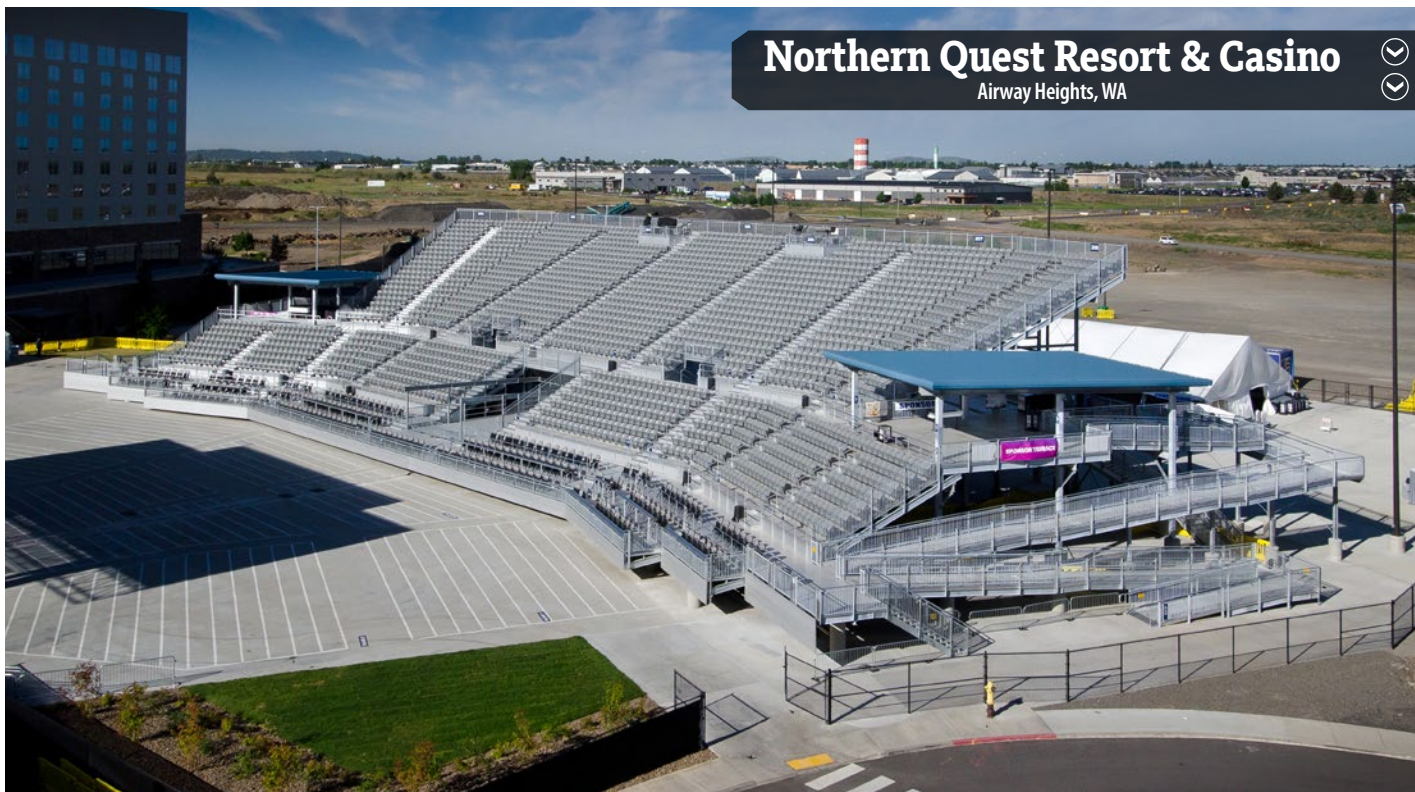
Photo @ Tirotta Photo Productions

Southern Bleacher started with two men's pride in a small-town school – wanting to give students' families a better experience when they turned out to support the team. Nothing has changed. Today, the same values inspire us to build great stadiums across the country.

EVENT VENUE

Northern Quest Resort & Casino

Airway Heights, WA



DETAILS

2,802 Seat Event Venue. 27 Row mitred stadium. 1L2K decking system. Three tier mitred design with landing for socializing. Today's fans don't stay seated, they enjoy the opportunity to walk about, stand and mingle. **Project notes:**

Our own Vertical Rail replaces standard chain link for additional style. Designed, manufactured and installed by Southern Bleacher Co. Photo @ Glen Davis, Legenday Portraits.

Event venues offer a place for concerts and a wealth of other memory making fun. With our state-of-the-art design and features, seats are not only the best in the house, but also the most comfortable. Looking to create the perfect space for live entertainment? Let us help.

Our team of salesmen and project managers are dedicated to helping our customers every step of the way.



family owned
Since 1946

Post Office Box One, Graham, Texas 76450-9976 ■ www.southernbleacher.com ■ 800.433.0912



BROCHURE S/19 © 2019