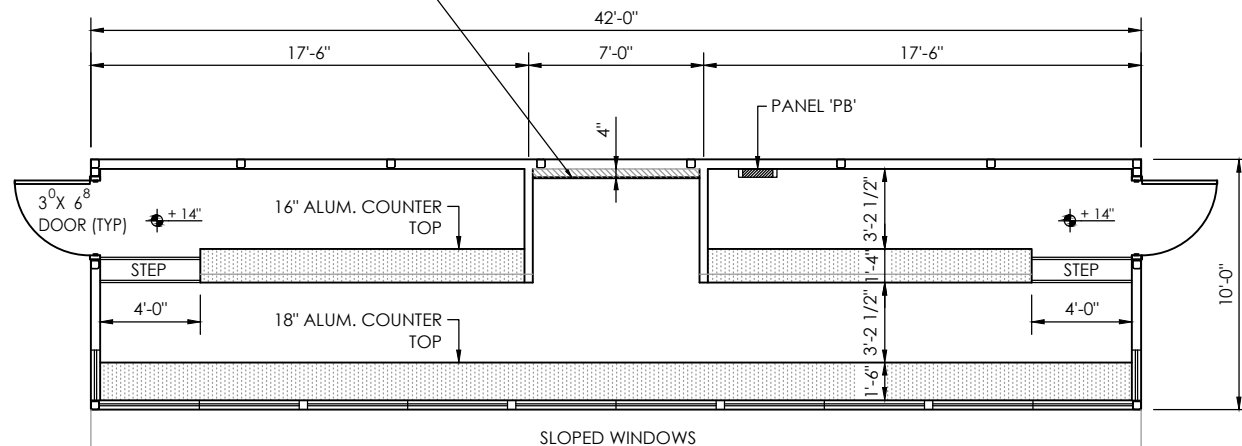


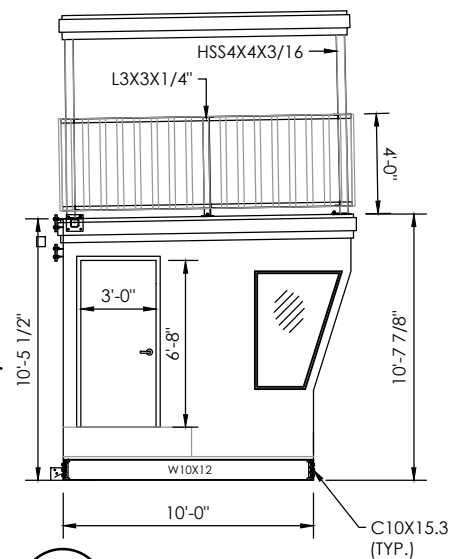
**3 ROOF RAIL LAYOUT**  
SCALE: 1/4" = 1'-0"

4" UTILITY CHASE WITH REMOVABLE SMOOTH SURFACE PLYWOOD ACCESS PANEL W/ CENTER JOINT AND EDGED WITH 1/2" HARDWOOD, PAINTED.

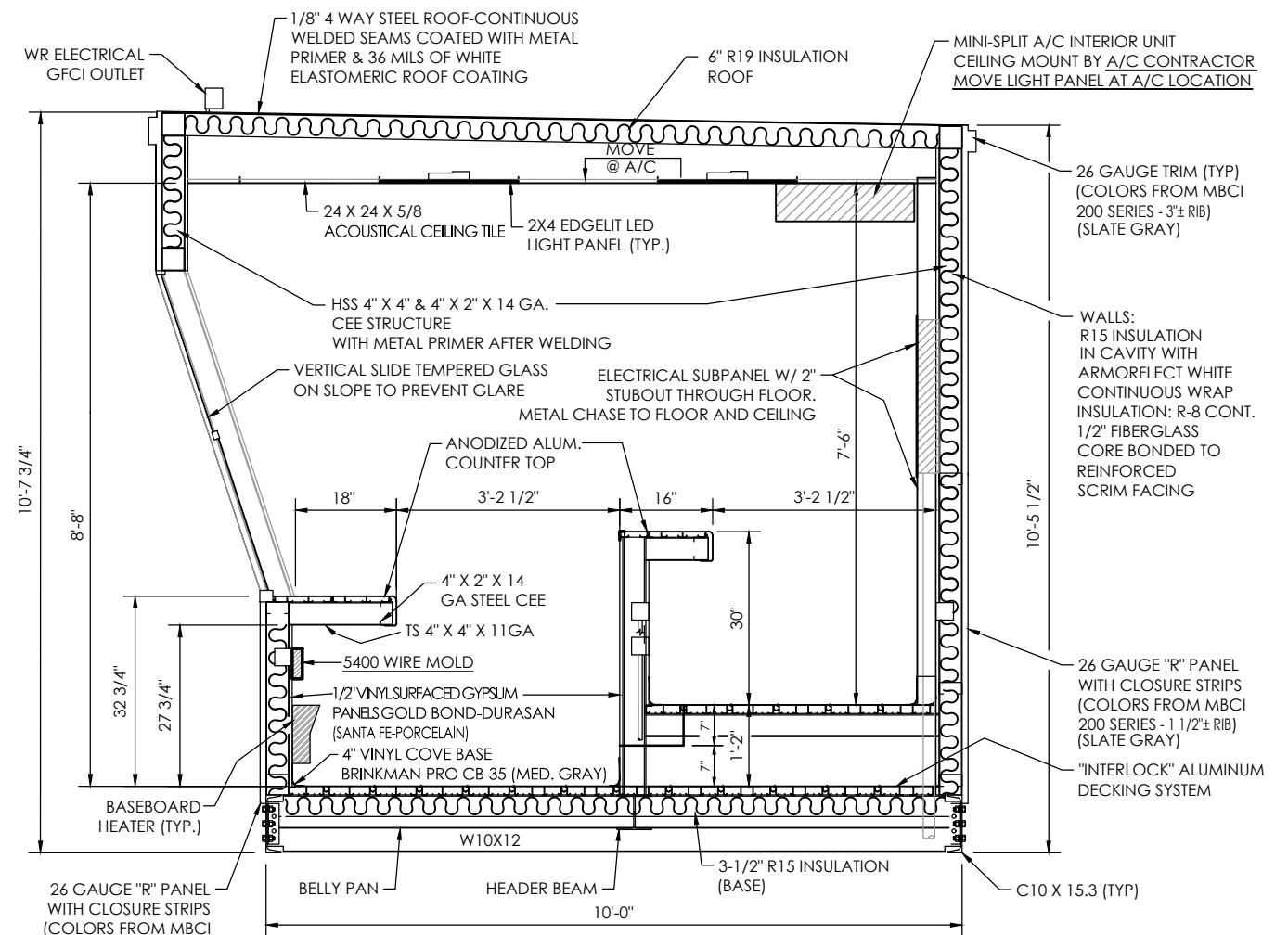


**2 PLAN VIEW**  
SCALE: 1/4" = 1'-0"

NOTE:  
PAINT DOORS AND FRAMES  
TO MATCH SOBCO 'SLATE GRAY'



**1 SIDE VIEW**  
SCALE: 1/4" = 1'-0"



**4 SECTION VIEW**  
SCALE: 3/4" = 1'-0"

**EXTERIOR DOORS**

**DOOR FRAME**  
CECO, SERIES SU STEEL FRAMES, 5-3/4" X 3' X 6'-8" WITH WOOD/STUD ANCHORS, 16 GA., HEAVY DUTY, PRIMER PAINT COAT

**DOOR**  
CECO - HMD CP 18 A60 3068 F BW 1 3/4" (C1; LC1) POLYSTYRENE INSULATION PRIMER PAINT COAT R-11.1 AS CALCULATED

**DOOR CLOSURE**  
NORTON CLP-8501  
EXIT DEVICE, YALE 2100  
YALE TRIM, YALE 546F 626

**THRESHOLD**  
PEMCO-171 A36, MILL FINISH ALUMINUM 5"X1/2"

**DOOR SWEEP-WEATHERSTRIP**  
NATIONAL GUARD 101VA

UL LISTED 10B, EQUAL TO CECO, STEEL DOOR FRAME ANSI A250.8-1998, ASTM A366, A620, A568 PRIMER PAINT COAT ANSI A250.10

UL LISTED 10B, EQUAL TO CECO, STEEL DOOR ANSI A250.8-1998, ASTM A366, A620, A568 PRIMER PAINT COAT ANSI A250.10

ANSI/BHMA A1564.4 GRADE 1  
ANSI/BHMA A156.3 GRADE 1

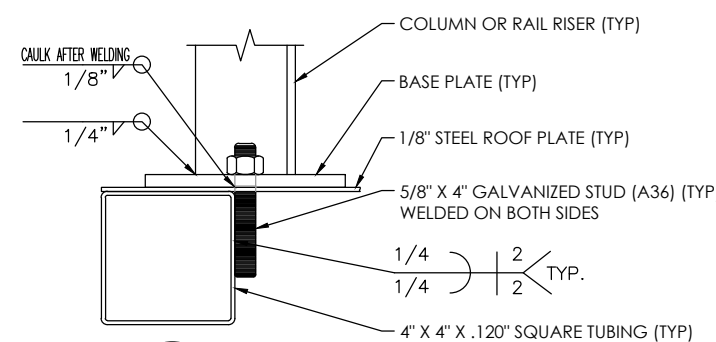
UL LISTED EQUAL TO HAGER ADA APPROVED

**NOTES:**

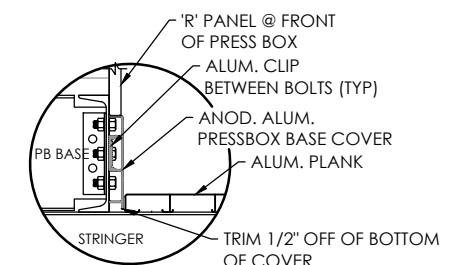
ROOF PLATE STEEL IS WELDED ON BOTH SIDES OF RAFTERS WITH 1-1/2" LONG 1/8" FILLET WELDS ON 12" CENTERS.

WALL PANELS ARE ATTACHED WITH #12 TEK SCREWS - 6" O.C. AT THE TOP AND BOTTOM OF THE PANELS AND 12" O.C. AT ANY INTERMEDIATE BRACE. LAP SCREWS ARE PLACED AT EACH END OF THE PANELS, AT THE INTERMEDIATE SUPPORTS, AND AT THE MID POINT BETWEEN SUPPORTS. (TEK #14)

FLOOR PLANK ATTACHED WITH (2)-MILL ALUMINUM HOLD DOWN CLIP w/ 5/16"x1" CARRIAGE SCREW AND 5/16" FLANGE NUT AT EACH W10X12. FRONT (END) FLOOR PLANK ATTACHED TO W10X12 WITH (2)-COUNTERSUNK 2" TEK SCREWS PER END OF PLANK AND AT INTERMEDIATE SUPPORTS.



**5 ROOF RAIL ATTACHMENT**  
NOT TO SCALE OPTIONAL ROOF RAILING



**6 PRESSBOX BASE TRIM DETAIL**  
NOT TO SCALE