

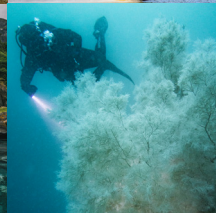
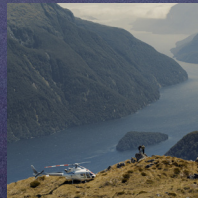
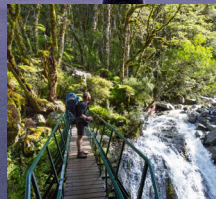
BEYOND BELIEF

# FIORDLAND

Visitors are drawn from around the world to Te Rua-o-te-Moko Fiordland for its famous natural icons like Piopiotahi Milford Sound and the Great Walks, but stay a little longer and you will discover a passionately protected slice of New Zealand's cultural, geological and pioneering past.

No matter how often people tell you of Fiordland National Park's untouched beauty, it will never compare to the feeling you get when you arrive here. Fiordland's wild and majestic landscape may appear inaccessible, but our local operators are ready to take you deeper into Fiordland to see more and stay longer. Scenic flights, cruises, and charters are a great way to see the sights. Add some adventure to your trip in the form of tramping, jet boating, fishing, diving, kayaking, mountain biking, horse trekking or more.

If you're in search of once-in-a-lifetime experiences, extraordinary sights, or quiet moments in nature, then Te Anau is the basecamp for you. What are you waiting for – start exploring now!



Discover activities and experiences  
[fiordland.org.nz/see-and-do](https://fiordland.org.nz/see-and-do)





# Events in Southland

*Your Back Yard Events Calendar*

Discover upcoming local events  
[southlandnz.com/events-southland](http://southlandnz.com/events-southland)

