

Southland

Official Visitor Guide



INVERCARGILL • BLUFF • STEWART ISLAND
THE CATLINS • RIVERTON • TUATAPERE
WINTON • GORE • NORTHERN SOUTHLAND



THE NEW ZEALAND WE ALL DREAM OF

www.southlandnz.com

Kia Ora – Welcome to the New Zealand we

A region of contrasts, Southland has world class scenery from mountain peaks, the deepest of lakes, meandering rivers famous for fishing, fertile farmlands, lush primordial forests, sweeping photogenic coastlines to the wild Southern Ocean and its islands, come explore the best of natural New Zealand.

Famous southern hospitality is highlighted with iconic delicacies such as the Bluff Oyster. Unique southern traditions and stories highlight the ingenuity of our people. Come savour the South.


Meet the locals of the South, native characters like the ancient Tuatara, nocturnal Kiwi, Hector's and Bottlenose Dolphins, majestic Yellow-eyed penguins and the Southern Right Whales. Our people will welcome you, so be sure to wander our streets, cafes and shops to discover the real South.

Southland is undoubtedly a playground for getting out and about by jet boat, horseback, kayak, helicopter, plane, cycle or foot. Whatever your passion, hiking, fishing, photography, history, meditation or family fun, Southland is yours for the taking.

 NZsouthland

 cometosouthland

 Southland_NZ

 +64 (0)3 211 0895

 southland.nz

 southlandnz.com

 #mysouthland



to Southland, all dream of...

- 4 Helpful Information
- 5 Southland Highlights
- 6 Events - Whats On
- 8 Southland Features
- 18 Southern Scenic Route
- 20 Itineraries
- 22 Invercargill
- 38 Bluff
- 41 Stewart Island
- 49 The Catlins
- 57 Gore District
- 63 Western Southland
- 70 Central Southland
- 72 Northern Southland
- 75 Subantarctic Islands
- 76 Gateways
- 78 Maps

Helpful Information

Weather & Environment

Southland's weather can be changeable, so be prepared and ensure you have appropriate clothing and footwear. We recommend you pack at a minimum: sun screen, sturdy footwear, a wet weather jacket, insect repellent (some locations), camera and plenty of water if you're venturing out into the outdoors. We also recommend you visit www.adventuresmart.org.nz for helpful tips and suggestions. Your local iSITE and DOC Office on Stewart Island are a great source of information.

Planning your journey

"Should have stayed longer" is a common statement made from disappointed visitors who haven't allowed enough time to really experience the South. The region has so much to offer that we encourage you to take your time and experience Southland at your leisure.

Information Centres

Don't hesitate to call the Invercargill iSITE (03 211 0895) or call into a local visitor information centre or museum for more information (Invercargill, Bluff, Waikawa, Owaka, Balclutha, Gore, Riverton, Tuatapere, Lumsden or Te Anau). Locals are very friendly, so don't hesitate to ask!

Driving Information

Driving responsibly is taken very seriously in New Zealand and it is important that you remember to keep left at all times, do not cross the centre line, be conscious of your speed and take great consideration of oncoming traffic when passing. If your speed is delaying vehicles behind you, take the time to find the next safest spot to pull over and allow traffic to pass.

Basic Travel Times

Invercargill – Queenstown 2.5hrs

Invercargill – Te Anau 2.5hrs SH94

Invercargill – Te Anau 3hrs Southern Scenic Route

Invercargill – Milford Sound 5hrs

Invercargill – Gore 50 minutes

Invercargill – Stewart Island, 20 minute flight from Invercargill,
1 hour ferry from Bluff

Invercargill – Dunedin 3hrs SH1

Invercargill – Dunedin (via The Catlins) allow at least 5hrs

Invercargill – The Catlins 1.5hrs

Emergency Numbers

Emergency Services Police, Fire, Ambulance 111

Healthline – free health advice 0800 611 116

Southland Hospital Kew Road, 03 218 1949

Licences

Every person who wants to go fresh water fishing or game bird hunting in New Zealand must first purchase a licence. For the best source of information head to www.fishandgame.org.nz



Southland Highlights

Southland's unmatched beauty provides a natural playground – no matter what your passion. As New Zealand's ultimate outdoors destination, its dramatic scenery spans lush rainforests, fertile farmlands and sweeping coastlines.

Follow the famous and spectacular **Southern Scenic Route**

Invercargill, Southland's capital, is full of grand architecture and gardens.

In **Bluff**, take a photo at Stirling Point and enjoy some world famous Bluff Oysters.

Stewart Island is New Zealand's third and southernmost island - an ecological wonderland filled with emerald-green rainforest, world class wildlife and white sandy shores.

Gore is famous for its country music, illicit whiskey making and brown trout fishing and is also a hub of history, heritage and artwork.

Southland's agriculture history comes alive in Central Southland and heartland towns like **Winton** and **Lumsden**.

Riverton is a great place to relax and unwind with family and friends on sheltered golden beaches.

Head to **Tuatapere** and take a hike or a jet boat trip in some of the most majestic landscapes in the country.

If cycling is your passion head to **Northern Southland** home to some of New Zealand's premier cycling trails and mountain bike tracks.

While every care has been taken in the compilation of this guide, the publisher cannot accept responsibility for any inaccuracies, or changes since going to print, or for any consequential loss arising from same. No portion of the content of this publication may be reproduced in whole or in part without prior written consent of the publisher.

AtoZ Media Limited.

For inquiries regarding advertising in the next edition please contact Graeme or Hayden Bell at the following email or 0800 286 946.

Re-order reference number: A2ZSOU2021

Re-order & enquiry contact - email: info@atoz-nz.com



Events - What's On



BLUFF OYSTER & FOOD FESTIVAL

MAY bluffoysterfest.co.nz

Hosted by the salty seaside township of Bluff, there is no better place to enjoy the unique flavours of Southland with local fare that will tempt any taste buds. Join the locals for a day filled with oyster opening and eating competitions, live music and a variety of food and drink stalls.

BURT MUNRO CHALLENGE

FEBRUARY burtmunrochallenge.co.nz

One of New Zealand's major motorsport events, this five-day event is jam-packed with a number of racing disciplines, exciting events, fantastic entertainment and famous southern hospitality. An event that honours Burt, his ingenuity, determination and love of speed and motorcycles.

ILT KIDZONE FESTIVAL

JULY iltkidzone.co.nz

Southland's most popular family festival is jam-packed with over 150 hands-on activities for every kind of kid – from creators, constructors and computer whizzes to sewing stars, sport fanatics and scientists. It's a magical place bursting with new adventures and fun. Let your imagination run wild!

MLT HOKONUI FASHION DESIGN AWARDS

JULY hokonui-fashion.co.nz

A key event in the national fashion calendar, the MLT Hokonui Fashion Design Awards brings together Southland's fashion community and fans from around the country to witness and experience a competitive platform for designers to display their garments before a panel of high profile judges.



RAKIURA CHALLENGE TRAIL RUN

OCTOBER stewartisland.co.nz/rakiura-challenge

Experience the buzz on Stewart Island as the Rakiura Great Walk transforms into a great run! New Zealand's southernmost trail run, this is one of the most rugged and diverse trails in the country. Held in Rakiura National Park, the 32km run will see you soaking up stunning coastal views and pure native bush.

RIVERTON HERITAGE HARVEST FESTIVAL

MARCH sces.org.nz/events

A 2-day annual celebration of Southland's home harvest, this event boasts some of the finest interactive displays, demonstrations and workshops about traditional growing, harvesting and preserving produce. The festival is complete with a farmer's market, pot-luck feast and live entertainment.

TE ANAU TENNIS INVITATIONAL

DECEMBER teanautennis.co.nz/welcome/teAnauInvitational

The Distinction Hotels Te Anau Tennis Invitational is one of New Zealand's premier tennis events. On the 28th and 29th of December each year, New Zealand's top 8 male tennis players descend on Te Anau to battle in the sunny south. Venture to Te Anau and enjoy the amazing southern hospitality the town has to offer with two days jam packed full of exciting action. Tickets are available for purchase at the gate. You won't want to miss this!

TUSSOCK COUNTRY MUSIC FESTIVAL

MAY / JUNE tussockcountry.nz/

Love the toe-tapping fun, camaraderie and warm, honest tones of country music? Join the best of New Zealand's country musicians and international stars at the national country music festival in Gore. Revel in listening to your favourite country acts at star-studded gigs over the nine-day festival.



Short Walks

Southland is a walking paradise, from gentle short walks to a range of outstanding multi day hikes – there is a track for everyone. For those after something less strenuous, Southland offers excellent short walks, designed to be enjoyed in a more leisurely way. Short walks provide a great way to get out and explore some of the best of natural Southland without the need for tramping boots or heavy packs.

There is an extensive range of options throughout the region and all walks will take between 15 minutes to 4 hours. The tracks are generally well formed and maintained. Make sure you dress for changeable weather and wear appropriate outdoor walking footwear.

You will find all of Southland's best short walk tracks on www.southlandnz.com

- McLean Falls, The Catlins
- Waituna Lagoon
- Estuary Walkway, Invercargill
- Forest Hill, Winton
- Croydon Bush Walk, Gore
- Piano Flat, Waikaia
- Back Beach, Riverton
- Rakatu Wetlands, Blackmount



Hiking

Southland is renowned for its remarkable hiking tracks that venture into wild and rugged landscapes, so there is no better way to get amongst it all. There is a huge range available catering to many different abilities, so it is important that you select a walk that best suits your skills.

Ensure that you plan, prepare and equip yourself appropriately for all conditions and remember that your safety is your responsibility. If you don't want to venture out on your own, there are a number of expert guides available who will share their local knowledge and experience as you marvel at the stunning scenery.

Some of the best spots to hike include:

- Stewart Island, home of world renowned Great Walk, the Rakiura Track.
- Out west the amazing Tuatapere Hump Ridge Track which is set to become New Zealand's next Great Walk.
- Up north into the beech forests of Waikaia Forest and Mavora Lakes.
- The Catlins, has the River Wisp Loop Track.
- Bluff, the beginning of Te Araroa, New Zealand's national walkway.



Get more information on Southland Hiking and Tramping at www.doc.govt.nz



Cycling

You will find a huge variety of cycling opportunities throughout Southland. So numerous are the options, cyclists of any level are able to explore the region's many tracks at their own pace. There are possibilities for everyone ranging from technical mountain bike tracks, cycle trails and road cycling, to New Zealand's most accessible, indoor velodrome located in Invercargill. Remember to ensure you have all the right gear for a safe and comfortable ride, and there are bike rental options in Invercargill, Stewart Island and Queenstown.

If you're keen to head out and experience the best of Cycle South, top picks include:

- Southland is home to some of the best cycle trails in New Zealand, particularly the Around the Mountains Cycle Trail. Designed to be easy and accessible for all, they are a great option for those wanting to explore at a relaxing pace.
- Numerous mountain bike tracks are available offering experiences ranging from easy to challenging. Top locations include Northern Southland, Sandy Point in Invercargill, Bluff, Western Southland and Gore.
- Road cycling is a popular activity with locals and a spectacular way for visitors to experience the scenic south.
- The SBS Bank Tour of Southland is one of New Zealand's most famous cycling events and attracts world-class competitors every November.



Search Cycle South at
www.southlandnz.com



Fishing

Southland is a fishing heaven. Every year the region attracts anglers from across the globe to its clear running, trout-laden rivers. Under big skies and surrounded by awesome mountain ranges, you can escape all distractions as you cast for brown trout, rainbow trout and salmon.

Let's not forget about the salt-water options! Fishing along the southern coastlines you will find prolific numbers of blue cod, trumpeter and tarakihi (just to name a few). Charter boat tours are available throughout the region for those wanting to experience the deep seas with an experienced guide.

- Southland rivers and streams offer easy public access, plentiful fish and water so clear it is often described as 'gin-clear'. So famous is Southland for its fly fishing Gore is commonly called the 'Brown Trout Capital of the World'.
- The Mataura Valley is known as a 'dry-fly Mecca' and is one of the best trout fishing rivers in the world. It has the highest population and catch rate of any river in New Zealand.
- Riverton, The Catlins and Stewart Island offer epic coastlines perfect for sea fishing adventures. The fish are so prolific you'll need the biggest chilly bin you can find to store your haul.



Search Fish South at
www.southlandnz.com



Wildlife

Southland is a nature lover's playground – a virtually untouched wilderness known for its rare and unique wildlife. The region is an absolute “must do” for anyone who is passionate about the natural world and authentic encounters.

For the best experiences, we recommend you use a tour or a guide but there are plenty of opportunities to spot wildlife throughout the region self-guided. If you are self-guiding, please remember to respect the wildlife by keeping a safe distance and following any local area instructions.

Some of the region's best nature excursions include:

- Nature dominates on Stewart Island, home to the iconic kiwi, robin, tui, dotterel and kaka.
- Ulva Island is a dream destination for bird lovers. Explore the island sanctuary and discover our most rare and endangered native birdlife including the Mohua/Yellowhead and the Saddleback.
- Marvel in the seclusion of The Catlins and see marine life including Yellow-Eyed Penguins, Hector's dolphin, New Zealand Sea Lion and Fur Seals.
- Go hiking in the high country and keep a look out for giant snails.



Water Adventures

Southland is a region shaped by water - the seas that encircle it, the rivers that run through it and the rain that falls on it. Its people and their past times and industry, are all moulded by this power of nature. From the snow-capped mountains, flowing rivers patrolled by trout, the deepest of lakes, cascading waterfalls in rainforests and fiords, sheltered bays for contemplation, or rugged coastlines with force of the great Southern Ocean, Southland is flowing with opportunities.

Take time to admire this force, by:

- Walking a short hike to see one of the many lakes and waterfalls.
- Kayaking or on a harbour cruise watch for marine life.
- Unleashing the adrenalin on a river jet boat.
- Taking the children to one of our swimming pools or safe swimming beaches.
- Trying your luck with a rod or dive for some local delicacies from our waters.
- Suiting up for the epic swells surfing around the Catlins, Invercargill and Colac Bay.
- Relaxing at comfortable dry spot with a book by the coast.



Arts & Heritage

Māori first occupied the region about a thousand years ago, followed by European sealers, whalers and traders from Australia in the 1820's. After the discovery of gold in 1861, settlers from Otago and elsewhere in New Zealand largely colonised Southland. Thanks to this rich history the story of Southland by combining the majestic physical environment, the people, and the culture is told throughout. You will find historical buildings located throughout the region but Invercargill, in particular, has over 60 registered heritage buildings and architectural features.

Inspiring stories and collections can be found throughout the region:

- Visit Te Hikoi “Southern Journey” Heritage Museum in Riverton.
- Explore Southland’s rich history through the region’s 8 Heritage Trails.
- Come aboard the nautical history at Bluff Central or the Bluff Maritime Museum.
- Learn about the regions illicit whiskey making past at the Hokonui Moonshine Museum.
- Learn more about the Catlins’ rich heritage and unique wildlife at Tumu Toka Curioscape.
- Regional museums packed with character telling the locals story, in small towns like Waikaia, Maitua, Waikawa, Otautau and Wyndham.



Family Fun

There are plenty of activities in Southland to keep the whole family entertained and are affordable, or even free. Visitors can explore one of the many parks in the region which have playgrounds for the kids, shorts walks and gardens. In the larger parks animal reserves and aviaries can often be found. If you're looking for an afternoon activity take the family out for a hit of golf at one of Southland's 24 fantastic courses. Make the most of the long summer hours in Southland and take the kids swimming at Splash Palace, or play in the surf at one of the beaches.

Activities the whole family will enjoy:

- Take on the climbing wall challenge at ILT Stadium Southland.
- Make a sandcastle at Oreti Beach, Riverton Rocks or Colac Bay.
- Try some horse trekking on the beach in The Catlins or Invercargill.
- Take the bikes and explore the Hokonui Hills or Dolamore Park in Gore.
- Go camping by the beach at Curio Bay, Monkey Island, Cosy Nook or Fortrose
- Pack a picnic and check out the Forest Hill scenic reserve near Winton.



Shopping

Visitors to the area can enjoy a stress free shopping experience in Southland. In the major centres like Invercargill, Winton and Gore, there is a variety of shopping options available from the bigger chain stores to the smaller boutique shops. All major populations have grocery stores as well as traditional services, although there are plenty of surprises amongst the townships where you can find a unique product or local specialties.

Top tips for shopping in Southland:

- Spend the day browsing the second hand shops, you never know what you might find!
- Visit one of the numerous locally owned and operated businesses, such as one of the many specialised food retailers.
- Explore one of the region's specialty department or hardware stores.
- Take home some iconic memories of Southland like Burt Munro memorabilia, regional honey, handmade chocolates, Paua shell art and craft or a plush wildlife toy!
- Enjoy the Southern Farmers Market where you'll find some the region's best products and seasonal produce. From artisan jams, chutneys, gifts and array of delicious sweet treats there's something to tempt everyone. You'll find this flourishing market at the Invercargill Racecourse every Sunday morning.



Savour

For hundreds of years, Southland has been a breadbasket for its people, with Maori hunting and gathering from its forests, waterways and coastline since the 13th century. This abundance of resource and natural conditions led to European colonisation that introduced commercial farming, producing some of New Zealand's finest food products. This colonisation bought a melting pot of cultures, who taking advantage of the local produce created a menu of unique flavours and recipes that continue to be reinvented by locals. Southland really does have something for all food lovers, come savour the south.

Must tries:

- Cheese Rolls
- Bluff Oysters
- Stewart Island Salmon
- Tender Lamb Cutlets (or chops as they known locally)
- Mashed Swede (particularly after a frost)
- Handmade Confectionary (chocolate and fudge is seriously good)
- Blue Cod and Crayfish from the Great Southern Ocean
- Mussels, Paua (Abalone) and Cockles from the shorelines
- Mossburn Venison Pies & Tuatapere Sausages
- Locally Made Cider & Hokonui Moonshine Whisky
- Organic boutique dairy products
- Whitebait Fritters or the exotic Titi (Muttonbird)
- Heirloom fruit and vegetables at the Food Forrest in Riverton



Southern Scenic Route



Voted one of the top ten drives in the world by Traveller Magazine the Southern Scenic Route is a great way to explore the region. This special 610 km journey takes you on a majestic trip between Dunedin and Queenstown through a world of waterfalls and stunning coastlines in The Catlins, inspiring history and culture in Invercargill through

to Stirling Point, Bluff and pristine wilderness via Western Southland. This route has attractions laid out one after the other - wildlife viewing, short walks, mountain-biking, fishing, hunting, boating, camping, tramping and caving – making it an ideal drive for those wanting to take their time discovering the region.

Travel tips for Southern Scenic Route:

- Allow plenty of time to stop for photos.
- Along the way enjoy some of the local specialties like cheese rolls, blue cod and white bait.
- Catch the ferry to Stewart Island and enjoy a break at New Zealand's most Southern Island.
- Take time to explore one of the many short walks and historical sites, more details can be found at www.southernscenicroute.co.nz



www.southernscenicroute.co.nz

Invercargill i-SITE Visitor Centre



Welcome to
Southland

www.southlandnz.com



SITE

Invercargill



Visitor
Information

Wachner Place, 10 Dee Street, Invercargill
(03) 211 0895 • visit@southlandnz.com

What's on, what to do, where to stay



Itineraries

All Weather Activities

- Bill Richardson Transport World – amazing interactive museum
- Chocolate making at The Seriously Good Chocolate Shop.
- Classic Motorcycle Mecca - Over 300 classic motorbikes and motorcycle focussed art.
- Visit E Hayes and check out their unique motor works collection.
- Have a go on an excavator at Dig This Invercargill, New Zealand's first and only heavy equipment playground.

A day of Heritage and Culture

- Te Hikoi Southern Journey in Riverton, learn how the Maori and European ancestors of the region adapted to live life on nature's edge.
- Bluff Maritime Museum, tells the story of the nautical history of New Zealand's oldest town.
- Eastern Southland Art Gallery in Gore, immerse yourself in the internationally renowned John Money Collection and the Ralph Hotere Gallery.
- Croydon Heritage Centre - for the budding flying ace you can have a flight in one of their classic collection.

Savour the South

- Begin the day at the The Auction House Café with a delicious breakfast.
- Visit Bluff for some world famous Bluff Oysters, or try some fresh Blue Cod from one of the local restaurants.
- Western Southland - try collecting paua along the coastline.
- Enjoy some fine Southland cuisine at one of the many restaurants and cafés.
- Tuatapere - find out why it's the Sausage Capital of New Zealand!



Coastal and Wildlife Paradise

Drive the Southern Scenic Route...

- Nugget Point for the famous lighthouse and rock nuggets.
- Cannibal Bay for sea lions.
- Purakaunui Falls - Cascading waterfall
- Cathedral Caves experience sea smells and gigantic caverns.
- Curio Bay - Sea lions, Hector's Dolphins and Hoiho/Yellow-Eyed Penguins. Learn more about the region's wildlife through the Gateway Experience at Tumu Toka Curioscape.
- Riverton Rocks for a swim.
- Colac Bay to check out the surf.
- Gemstone Beach and find your own treasures.
- Monkey Island - accessible at low tide.
- McCracken's Rest - beautiful views of Te Waewae Bay and Southern Fiordland.

Island Hopping

- Bluff - panoramic views of Foveaux Strait from Bluff Hill, then photo opportunities at Stirling Point.
- Stewart Island - a nature enthusiast's paradise.
- Ulva Island - world renowned predator free bird sanctuary.
- Fishing charters - enjoying one of the many walks on Stewart Island.
- Kiwi spotting - Unique activity found nowhere else in the world.
- Rakiura Track - one of the New Zealand's Great Walks.



More itineraries to be found at
www.southlandnz.com



Invercargill

New Zealand's most Southern city Invercargill, is the beating heart of Southland. There is more than meets the eye when it comes to Invercargill. A thriving coffee scene, exciting events calendar and an inner-city rebuild are just some of the many reasons to stay and explore. The city has a rich heritage which is celebrated through grand architecture, and a large collections of historic cars, trucks and motorcycles at three different motoring museums. A wide variety of cafes offer their own fusion of cuisine with local produce to satisfy everyone's taste buds.



www.invercargillnz.co.nz

Must Do's



COASTAL PLAYGROUND

Just minutes from the city centre there is a great array of coastal landscapes for visitors to explore from the long coastal highway of Oreti Beach, to the native wonders of Waituna Wetlands and Omaui, or the boardwalk on the estuary and heritage wharfs.



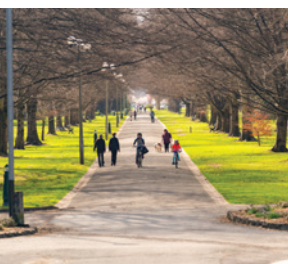
SAVOUR THE SOUTH

With some of the world's best fare produced within the region, Southland is a foodie's dream destination. Southland serves up an eclectic mix of dining experiences; succulent seafood including world famous Bluff Oysters, farm-fresh vegetables, prime cuts of meat and renowned cheese rolls - all dished up with a good dash of Southern hospitality.



NEW ZEALAND'S GARAGE

It may appear Invercargill is obsessed with anything that has wheels. Visit Bill Richardson Transport World, which holds the largest private collection of its type in the world, or see the illustrious display of motorcycles at Classic Motorcycle Mecca. Check out Invercargill's motorcycle legend of speed, Burt Munro, at E. Hayes and Sons Motorworks. Have a go on an excavator at Dig This Invercargill, New Zealand's first and only heavy equipment playground.



QUEENS PARK

On the edge of the inner city, there's the beautiful and sprawling Queens Park perfect for those keen to swing a nine iron, play a round of frisbee golf, visit the animals or walk the many tracks that meander through the park.



4

NEW ZEALAND'S ONLY HEAVY EQUIPMENT PLAYGROUND

Grunty fun for ages 5 to 105

**“LEAVES YOU GRINNING
FROM EAR TO EAR”**

Unleash your big kid and have a ball operating **bulldozers**, **diggers**, **mini diggers** and **skid steers** in our giant gravel pit.

BOOK TODAY

digthisinvercargill.nz

0800 151 252 (ext. 3)

84 Otepunui Avenue, Newfield, Invercargill



“DEFINITELY MOTORBIKE HEAVEN... IF YOU LOVE BIKES THIS IS A BUCKET LIST TRIP”

1

The Southern Hemisphere's leading motorcycle museum

VISIT TODAY

motorcyclemecca.nz 0800 151 252 (ext. 2)
25 Tay Street, Invercargill

RIDE INTO YESTERDAY



“I WAS LEFT BREATHLESS AFTER VIEWING THIS EXTENSIVE COLLECTION”

2

Over 300 vehicles, family fun, wearable arts & The Grille Café

VISIT TODAY

transportworld.nz 0800 151 252 (ext. 1)
491 Tay Street, Invercargill

WHERE EVERYONE DISCOVERS THE UNEXPECTED



Invercargill - Attractions



5

Legends live here.

See Burt Munro's AUTHENTIC record-breaking bike

THE WORLD'S FASTEST

Indian

HOME OF THE WORLD'S FASTEST INDIAN

where people come first

ehayes MOTORWORKS

COLLECTION

INVERCARGILL • NEW ZEALAND

+ Merchandise, Gifts, Collectibles and **MUCH MORE!**

where people come first

ehayes

HAMMER HARDWARE It's your local

Trade7one INDUSTRIAL

All exhibits in our collection are **FREE TO VIEW** DURING NORMAL STORE OPENING HOURS

168 Dee St Invercargill. Ph 03 218 2059 **OPEN 7 DAYS** www.ehayes.co.nz



Lynette Jack Scenic Sights



22 Willis Street, Waikiwi, Invercargill
9810
M: 0274 338 370
A/H: 03 215 7741
E: scenic.sights@xtra.co.nz

Experience the Best of Southland on one of our flexible tours with that personal touch. Invercargill, Bluff, The Catlins Coast, Riverton, Western Southland, "Worlds Fastest Indian" movie locations, Gardens. 1-50 people are welcome. Sharing Southland with visitors since 1993. With Lynette its just like being with a close family friend. Prices on application.

Great Car. Great Rates!

6

RaD CAR
HIRE™
Pay Less - Experience More



www.rentadent.co.nz

69 Airport Avenue, Invercargill Airport Ph 03 214 4820

7 Stewart Island Flights

Just a 20 minute scenic flight from Invercargill to this tranquil place where time almost stands still...

Scheduled daily flights, day trip packages or combine flights, a tramp and a boat ride with the exciting 'Coast to Coast' adventure.



Main Terminal, Invercargill Airport P: (03) 218 9129
E: sif@xtra.co.nz W: www.stewartislandflights.com

Bottom Bus / Catlins Coaster



T: 03 477 9083
W: www.travelheadfirst.com
E: bookings@travelheadfirst.com

Showing off the sights and delights of the scenic south. Walks to natural attractions and wildlife encounters. Small groups, fully guided personalised service. Flexible options to see **The Catlins** in one day or longer. Full Catlins tour from Dunedin, Queenstown, Te Anau or Invercargill; options to Stewart Island and Milford Sound. Year round schedule.

Invercargill - Attractions/Shopping

Glowing Sky

Exclusive NZ Merino Clothing

8



150 Spey St, Invercargill / glowingsky.co.nz

9

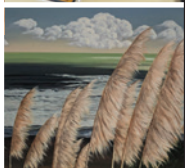
Toi Toi

Maori Art & Gift Shop
www.kaitahu.maori.nz

119 Dee Street, Invercargill
03 218 6488

Email: toittoi@kaitahu.maori.nz

NZ Designed and made.
A wide range of gifts,
ideal for sending overseas.



10



Now operating 24 hours. The biggest gym in Invercargill, members are sure to exceed their goals. Where Champions are made!

45 Clyde Street Invercargill, NZ 9810 Phone 03 218 938

Visit our Facebook page

The Auction House Cafe & Bar

1



the
auCTION
house CAFE
& BAR

20 Don Street, Invercargill
T: 03 214 1914 M: 027 308 9014
E: judy@theauctionhouse.co.nz
W: www.theauctionhouse.co.nz
Hours Monday 6.30am-4:30pm
Tuesday to Friday 6.30am-11pm
Saturday 8am-11pm Sunday 9am-4pm

Judy and the team have created a menu that offers fresh, healthy, homemade options and where possible, organic locally grown products. Serving breakfasts every morning.

Indian at The Crescent Invercargill

2



11 The Crescent, Invercargill
T: 03 214 1555
W: www.indianatthecrescent.co.nz
Lunch: Tuesday-Saturday 11.30am-1.30pm
Dinner: Tuesday-Sunday 5pm-9.30pm
Monday Closed

Serving authentic Indian food cooked fresh in their traditional tandoor oven. Choose from a menu packed with starters, classic favourites, vegetarian dishes and delicious homemade desserts. Has a fully licenced bar and can cater for customers with dietary requirements. Dine in, Take Away and Deliveries.



TUATARA
LODGE
CAFE + BAR

**Your one stop shop
in the heart of the city**
Accommodation • Café • Bar
Brewery • Pizzeria • Art

OPEN EVERY DAY 7AM – 9 OR 10PM

30-32 DEE STREET INVERCARGILL

OFFICE@TUATARALODGE.CO.NZ TUATARALODGE.CO.NZ

FREEPHONE 08004TUATARA

Invercargill - Dining

THE FOUNDRY

4



Cnr Gimblett Street & North Road

☎ (03) 215 9080

🌐 the-foundry.co.nz

Open for lunch 11am-2pm Sat & Sun

Open for dinner 5pm-late seven days

The Foundry is a new restaurant and bar with ambiance, style and quality decor. Not only can you enjoy the spectacular atmosphere on offer, but you can also reap the benefits of a modern menu featuring seasonally selected dishes.

SPEIGHT'S ALE HOUSE

5



38 Dee Street

☎ (03) 214 5333

🌐 speightsalehouseinv.co.nz

Open 7 days a week from 11am

The iconic Speight's Ale House in Invercargill serves hearty southern fare matched with your favourite beers from the Speight's range. Good on ya mate!

THAR & FEATHER RESTAURANT

6



Cnr McQuarrie Street & Elles Road

☎ (03) 216 8094

🌐 southlandtavern.co.nz

Open 7 days a week from 5pm

Famous for food - you bet!! An intimate 65 seat restaurant that oozes atmosphere and provides a range of tasty dishes with its extensive menu.

WAXY'S IRISH PUB

7



90 Dee Street

☎ (03) 214 0313

🌐 waxys.co.nz

Open 7 days a week from 10am

Wonderful food, great Irish music in surroundings reminiscent of the pub scene in Dublin.



EMBERZ AT ASCOT

8



Ascot Park Hotel,
Cnr Tay Street & Racecourse Road
☎ (03) 219 9076
🌐 ascotparkhotel.co.nz
Open 7 days a week, dinner from 6pm

Award winning Emberz Restaurant has a delicious menu which showcases Southland's quality produce – from farm to fork. Plus Emberz Bar has an all day menu served from 11am. Breakfast, lunch and dinner dining options available.

The Homestead

9



Cnr Avenal & Dee Streets
☎ (03) 218 8944
🌐 avenalhomestead.co.nz
Open 7 days a week from 11am-10pm

Dining for all ages and great for any occasion. Superb a la carte menu at affordable prices.

LEVEL ONE RESTAURANT & BAR

10



Kelvin Hotel, Cnr Kelvin & Esk Streets
☎ (03) 218 2829
🌐 kelvinhotel.co.nz
Open Mon-Fri 6am-10pm
and Sat-Sun 7am-10pm

Stylish and packed with atmosphere. Exciting menu to tempt those taste buds for dinner and a cafe style lunch. Serving breakfast, lunch and dinner.

LONE STAR CAFE & BAR

11



Cnr Dee & Leet Streets
☎ (03) 214 6225
🌐 lonestarinvc.co.nz
Open 7 days from 5pm

Legendary food and service. An atmosphere you can taste! Menu caters for big and small appetites alike, with everything from our famous spare ribs to the Lasso of Hog!

THE SAUCY CHEF ON ST ANDREW RESTAURANT & BAR

12



Cnr St Andrew & Sydney Streets
☎ (03) 217 1980
🌐 thesaucychef.co.nz
Open 4pm daily for drinks and dining
Lunch Fri-Sat/Sun 11am-2.30pm

Great casual dining with a variety of exciting specialty dishes and Heineken on tap. A feature of this restaurant is the range of seafood dishes.

Invercargill i-SITE Visitor Information Centre



Wachner Place, 10 Dee Street,
Invercargill
T: 03 211 0895
E: visit@southlandnz.com
W: www.southlandnz.com



For information and bookings for accommodation, attractions and activities on Stewart Island, in Southland and beyond.

Travelling around? On the move? Go to southernscenicroute.info

Southern Scenic Route's mobile phone guide to Activities & Attractions, Galleries & Museums, Accommodation, Shopping, Dining, Transport, Maps & Information.



Simply follow the steps and make your choice from the selection - you can then ring or email them direct!

Phone, email, web, maps, it's all conveniently there!

**Warm & Comfortable
1 or 2 bedroom units
Kitchen/Kitchenette
Great parking for all
guests**

**Netflix - Free ultra fast
Wifi internet**

444 North Road, Invercargill
Ph: 0800 228 274 | 03 215 7552
bookings@bavarianmotel.co.nz

1

www.bavarianmotel.co.nz

Bavarian MOTEL



**Central City
Camping Park**
Invercargill

2

**209 Tweed St, Invercargill
Ph/Fax: 03 214 2226**

**Reservations 0508 CAMPING (226 746)
Email: info@invercargillcamping.co.nz
www.invercargillcamping.co.nz**

QUALITY BUDGET ACCOMMODATION

From comfortable, homely en suite cabins, to camping sites big & small.

There is a well equipped kitchen & lounge room, with comfy seating for all. Great showers, hairdryer, laundry too, all super clean, quiet & waiting for you.

Just \$40 for 2 on a powered site, makes this Park the BEST for the night.

Free WIFI vouchers

en route to everywhere

Monarch Motel Invercargill

3



633 Tay Street, Invercargill
P: +64 3 217 6114
FP: 0800 C U SOON (0800 287 666)
E: office@monarchmotel.co.nz
W: www.monarchmotel.co.nz

Offering 22 spacious accommodation units, your hosts Clark and Sue Whelan would love to share their favourite local attractions, restaurants and Southland's best kept secrets while you enjoy Invercargill. FREE Ultra-Fast Wireless Broadband, Off Street Parking for large/small vehicles and trailers, Meeting & Display Room available, Spa, Sauna & Ice Bath, 5 Channel Sky & LCD T.V's, 3 minutes to City Centre.

Queens Park Motels

4

Here at Queens Park Motels, you can enjoy the best of both worlds. Our quiet location on the edge of the Queens Park gardens provides a relaxing, quiet, comfortable, stay while enjoying a convenient central location. Queen's Park Motels are a family friendly motel. 85 Alice Street, Invercargill 9810 T: 03 214 4504

M: 022 061 8198 FP: 0800 800 504 E: quietstay@queensparkmotels.co.nz
W: www.queensparkmotels.co.nz



5


QUEST

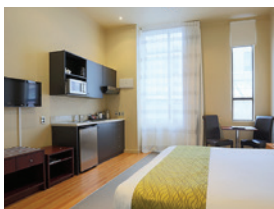
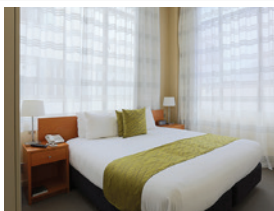
APARTMENT HOTELS

10 Dee Street, Invercargill
info@questinvercargill.co.nz

Stay in the heart of Invercargill in the middle of the CBD within walking distance of the best of the shopping, a selection of great restaurants and only 5 minutes' walk from the brand new Classic Motorcycle Mecca.

Our spacious apartments all have kitchenettes, or full kitchens, laundry facilities, complimentary car parking, free gym access, free WiFi, and Sky TV.

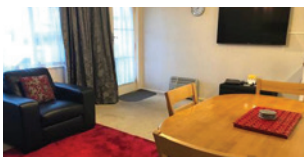
Call our friendly team now on 0800 101 801 or book online at www.questinvercargill.co.nz



Invercargill - Accommodation

Surrey Court Motel

7



Hosts: Daryl and Lee Greig
400 Tay Street, Invercargill
P: +64 3 2176102
E: info@surreycourt.co.nz
W: www.surreycourt.co.nz

Are you looking for free parking and free unlimited wifi and 50 channels of sky?
Do you fancy access to the best gym in Invercargill?
Tired of takeaways and want to cook, in properly appointed kitchen?
Prefer a separate bedroom to the lounge and kitchen? Do you like to travel with your
pets? Answered yes to all of these? Then please call us today!

8

BOUTIQUE ACCOMMODATION

INVERCARGILL - NEW ZEALAND



“Everything is perfection”

BOOK TODAY

0800 151 252 (ext. 4)
23 Anglem Street, Invercargill
lodgestransportworld.nz



THE LODGES

AT TRANSPORT WORLD





10

We offer a range of backpacker and room options to suit everyone from the budget traveller through to the luxury glam packer in central Invercargill.

OPEN EVERY DAY 7AM – 9 OR 10PM
OFFICE@TUATARALODGE.CO.NZ TUATARALODGE.CO.NZ
FREEPHONE 08004TUATARA 30-32 DEE STREET INVERCARGILL



Victoria Railway Hotel

11

Old World Charm and Southern Hospitality in the heart of Invercargill
3 Leven Street Invercargill Freephone 0800 777 557
Ph 03 218 1281 Email vrhotel@xtra.co.nz www.hotelinvercargill.co.nz



Invercargill - Accommodation

12

ASCOT  PARK HOTEL
INVERCARGILL, NEW ZEALAND

Invercargill's
premier hotel
& conference
centre

Hotel, motel and
apartment style
accommodation, just
minutes from the
airport and city centre.

Free WiFi internet.
Heated pool, spa,
sauna and
fitness area.

Extensive conference
facilities, off-street
parking, restaurant,
two bars and
bottle store.

ascotparkhotel.co.nz /  / ascot@ilt.co.nz
0800 272 687 / 03 219 9076
Cnr Tay Street & Racecourse Road, Invercargill 9810

MAINSTAY
NEW ZEALAND HOTELS



 Balmoral
Lodge

MOTEL

Centrally located
38 spacious first-class
units, plenty of
off-street parking,
cooked & continental
breakfasts.
4 minute drive to ILT
Stadium Southland!
Free Wi-Fi in all units.

265 Tay Street Invercargill,
03 219 9050 or
0800 225 667
balmoral@ilt.co.nz
www.balmoralmotel.co.nz



13





Kelvin Hotel

INVERCARGILL | NEW ZEALAND

INVERCARGILL'S ONLY INNER CITY HOTEL

Quality deluxe accommodation
 Level One Restaurant & Bar / Editor's Cut Sports Bar
 Free WiFi Internet / Conference Facilities

Cnr Kelvin and Esk Streets, Invercargill
 0800 802829 or 03 218 2829
bookings@kelvin.ilt.co.nz

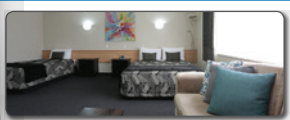


WWW.KELVINHOTEL.CO.NZ

Homestead VILLA motel



- 35 Luxury units
- Directly opposite Cobb & Co Restaurant and Bars
- All day meals and room service available
- Free Wi-Fi internet in all units
- Ten minute walk to city centre
- Off street parking



T: 0800 488 588 F: (03) 214 0478
 or : (03) 214 0408 E: villa@ilt.co.nz

Cnr Avenal & Dee Streets, Invercargill
www.villamotel.co.nz



Bluff

Thirty kilometres south of Invercargill, lies the port town of Bluff, home to the iconic Bluff Oyster and the gateway to Stewart Island. Bluff has a rich history and many interesting attractions. It is the oldest European settled town in New Zealand, and has many wonderful short coastal and bush walks that offer amazing scenery and views.

Must Do's



BLUFF OYSTERS

Grown slowly in the cool, clean waters of Foveaux Strait the Bluff Oyster is a true New Zealand delicacy. Every year in May the Bluff Oyster and Food Festival celebrates this southern delight with a daylong event full of great local food, entertainment and much more.



STIRLING POINT & FOVEAUX WALKWAY

Located at the beginning of State Highway 1, Stirling Point is famous for its signpost, which has featured in thousands of photographs with tourists from all around the world. While there check out the popular Foveaux Walkway – an easy coastal walk through to Lookout Point – watch for Southern Right Whales.



BLUFF HILL

With a summit at 824 feet above sea level, a walk up Bluff Hill provides inspiring views of Foveaux Strait, Stewart Island, and the rest of Southland. This is a great vantage point to take in the history of Bluff, so take it all in followed by a tour of the heritage trail and visit to the Bluff Maritime Museum. For the adventurous take to the Motopohue Mountain Bike Trail on Bluff Hill.

Bluff Maritime Museum



An insight into Southland's maritime history. Visit Monica 11, climb aboard and understand the workings of a real oyster boat. Other exhibits include oyster dredging, working steam engine from TST Awarua, local shipwrecks and much more.

Monday-Friday 10am-4.30pm.

Weekends 12.30pm-4.30pm (Excludes May-Sept)

Admission \$3.00 children \$1.00



241 Foreshore Road, Bluff.

Ph/Fax (03) 212 7534 EMAIL bluffmuseum@xtra.co.nz



STIRLING POINT EXPERIENCE

ENJOY ACCOMMODATION, BREAKFAST & DINNER ALL IN THE ONE SPOT



Phone: +64 03 212 7575
relax@landsendhotel.co.nz
www.landsendhotel.co.nz



Phone: +64 03 212 8855
www.oystercove.co.nz
info@oystercove.co.nz



Bluff - Accommodation

Bluff Camping Ground



29 Gregory Street, Bluff
T 027 626 2018
E procter01@xtra.co.nz
www.bluffcampingground.co.nz

Bluff Camping Ground, centrally located off Marine Parade. Landscaped, habourside views. Power and non-power hard and grass sites each with water points. Modern kitchen-dining facilities, laundry, unlimited wifi.

Stewart Island Ferry Services



Bluff Visitor Terminal
21 Foreshore Road, Bluff
T: 0800 000 511
E: info@sie.co.nz
W: www.stewartislandexperience.co.nz



Experience Foveaux Strait in style on board our express catamarans. During the one hour crossing, keep a lookout for sea birds. Pick-ups and drop-offs at Invercargill i-SITE Visitor Centre, Tuatara Backpackers, Reading Cinemas and Invercargill Airport. Coach transfers also available from Te Anau & Queenstown (November- April).



Travelling around? On the move? Go to southernscenicroute.info

Southern Scenic Route's mobile phone guide to Activities & Attractions, Galleries & Museums, Accommodation, Shopping, Dining, Transport, Maps & Information.

Simply follow the steps and make your choice from the selection - you can then ring or email them direct!

Phone, email, web, maps, it's all conveniently there!



Southland Locator Beacons Save a Life - It could be your own!

Be Safe Be Prepared Be Responsible
Buy or Hire a locator beacon
Refer to our website for local stockists

\$15 for 1 day, \$30 for 3 days or \$40 for 7 days



John Munro Ph: 03 226 6341 Mob: 0274122925
beacons@ihug.co.nz www.locatorbeacons.co.nz



Stewart Island

Stewart Island is New Zealand's most Southern island and is home to many native birds, including the country's icon, the Kiwi. Rakiura means "glowing skies" in Maori – You'll get an inkling why when you see the Aurora Australis which often appears in this Dark Sky Sanctuary. The waters are startlingly clear and offer great opportunities to snorkel, dive or kayak. The small township of Oban sits among the native bush and offers a wide variety of accommodation and activities.



www.stewartisland.co.nz

Must Do's



ULVA ISLAND

Ulva Island is an absolute “must-do” for visitors to Stewart Island. The Island is free of introduced animals and offers a glimpse into New Zealand’s ancient past. Join a guided walk and gain unique insight into this island paradise.



SPOTTING KIWI

The evening kiwi spotting excursion includes a twilight boat cruise to a remote area of Stewart Island. Take a short bush walk through native bush and spot the kiwi on a sandy beach as they feed amongst the kelp.



RAKIURA TRACK

Stewart Island/Rakiura is home to New Zealand’s most southerly and newest national park, Rakiura National Park and the Rakiura Track. Suitable for anyone with moderate fitness it takes three days and provides a good introduction to the scenery of Stewart Island. Suitable for tramping all year round.



FISHING/SEAFOOD

Explore the beautiful, unpolluted water surrounding Stewart Island to catch your own delicious Stewart Island Blue Cod, dive for crayfish, or scour the rocks and beaches for paua and cockles. For the more sedate, visit the local food vendors for unmatched seafood platters.



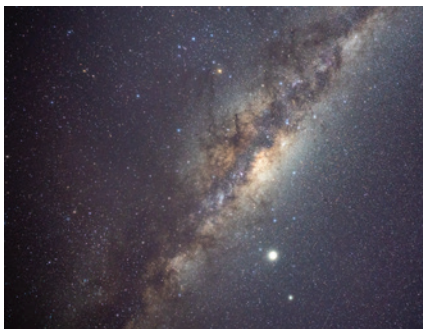
LOCALS FUN

Learn from the locals about why they choose this paradise. Cruise the harbours and inlets by boat or kayak. Jump on the most southern mountain bike trail or cruise the streets on a scooter. Visit the recently redeveloped Rakiura Museum.

Stewart Island - Accommodation

Worlds newest International Dark Sky Sanctuary

January 2019: Stewart Island is officially recognized as an International Dark Sky Sanctuary, the fifth in the world and only the second island accredited with this status.



Kaka Retreat Motel



7-9 Miro Crescent,
Halfmoon Bay
T: 03 2191 252
FP: 0800 500 252
E: enquiries@kakaretreat.co.nz
W: www.kakaretreat.co.nz



- 5 Quality Studio units
- 2 Bedroom Cottage sleeps up to 4
- 3 Bedroom Cottage sleeps up to 6
- BBQ; Central heating; Guest Telephone; Internet, Laundry
- Centrally located only a 5 minute walk to township, shops and restaurants
- Complex surrounded by native bush and birdlife
- Continental breakfast available (extra charge)
- Courtesy transfers ferry/flight depots



Stewart Island Apartments & Motels

Location of the 'Rakiura Retreat' | 5 Fully Self-contained units with vehicles
Roomy, warm & comfortable | Seaviews & pathway to secluded beach
Visiting Kakas, Kiwis, Kereru & Tuis

03 219 1096 info@rakiuraretreat.co.nz

www.stewartislandapartments.com



Stewart Island
L O D G E

*a peaceful bed and
breakfast, nestled
in native bush with
stunning sea views*

Freephone 0800 65 65 01 www.stewartislandlodge.co.nz

Escape to NZ's third island



Relax and unwind on New Zealand's third island – Stewart Island. An unspoilt world of lush bush, stunning coastline and thriving birdlife, only one hour from the mainland by ferry. Visit for the day or stay for the night – there's plenty to explore.

0800 000 511
stewartislandexperience.co.nz

Encounter kiwi in the wild

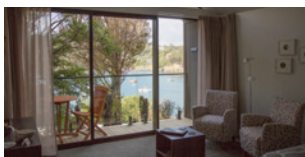


Stewart Island is home to the largest population of tokoeka – Southern Brown kiwi, in New Zealand. Join us for a cruise at dusk, a guided bush walk and the opportunity to encounter kiwi in the wild.

*Conditions apply, see our website for details.

Stewart Island - Accommodation/Dining

Church Hill Boutique Lodge & Restaurant



Deanne & Chris Sara
36 Kamahi Road, Stewart Island, 9846
T: +64 3 219 1123
M: +64 27 270 5344
E: lodge@churchhill.co.nz
E: restaurant@churchhill.co.nz
W: www.churchhill.co.nz

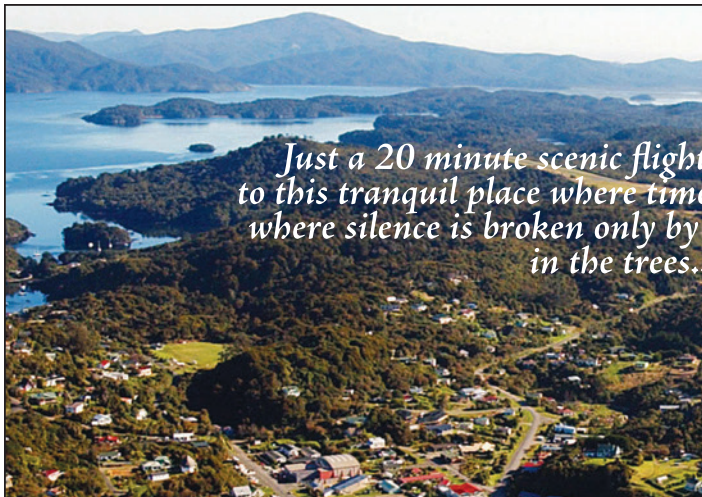
Fully hosted boutique lodge, in conjunction with Church Hill Restaurant, has 3 spacious, intimate, standalone suites with full glass frontages and private decks maximising views of spectacular Halfmoon Bay where you can relax, unwind and soak up the panoramic views, native bush setting and bird life.

South Sea Hotel



26 Elgin Terrace, Stewart Island
T: 03 219 1059
F: 03 219 1120
E: southsea@stewart-island.co.nz
W: www.stewart-island.com

Iconic hotel on central waterfront, 2 minutes walk on flat footpath from ferry and plane terminals. Motel units or traditional hotel rooms. *Off season rates may apply. Popular, fully licensed bar and restaurant featuring local seafood. Great Coffee. Free WiFi. Friendly knowledgeable staff. Social hub of Stewart Island.



*Just a 20 minute scenic flight
to this tranquil place where time
where silence is broken only by
in the trees.*

www.stewartisland.co.nz

Scheduled daily flights, half to full day trips available.
Or try the exciting 'Coast to Coast' adventure.

Contact us now to arrange your visit to natural New Zealand and

Stewart Island -Attractions

Rakiura National Park Visitor Centre

Quality information on walking tracks around Halfmoon bay and Rakiura National Park. Daily updates on weather/track conditions
Main Road, Stewart Island T: 03 219 0009 (Visitor Centre) 03 219 0002 (DOC)
E: stewartislandfc@doc.govt.nz W: www.doc.govt.nz

Invercargill i-SITE Visitor Information Centre



Wachner Place, 10 Dee Street,
Invercargill
T: 03 211 0895
E: visit@southlandnz.com
W: www.southlandnz.com



For information and bookings for accommodation, attractions and activities on Stewart Island, in Southland and beyond.



... from Invercargill
... almost stands still...
... a native bird calling

STEWART ISLAND
FLIGHTS

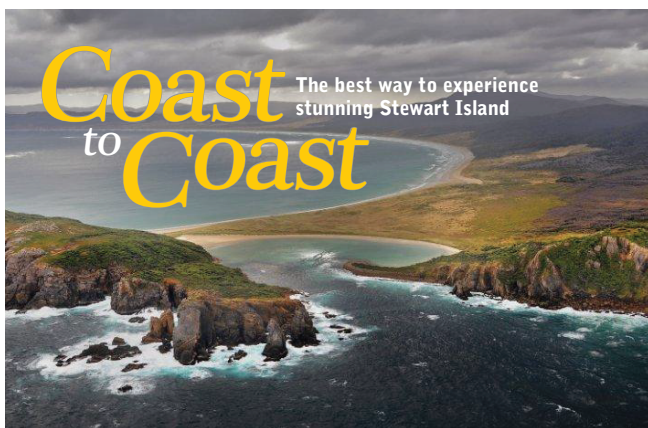
landflights.com

PO Box 860, Invercargill
Ph 03 218 9129, Fax 03 214 4681
Email sif@xtra.co.nz



... its best...

Stewart Island - Attractions



Coast to Coast

The best way to experience stunning Stewart Island

- Scenic flight
- 2-9 people
- 4-6 hour wilderness trek
- Mason Bay Beach landing
- 45 minute boat ride
- Chance to spot Kiwis
- Overnight in Doc hut optional

Please note: Trips are weather and tide dependant. Minimum numbers apply. Average level of fitness, warm clothing and adequate footwear required.

For enquiries or bookings contact Stewart Island Flights
Ph: (03) 218 9129 Email: sif@extra.co.nz
www.stewartislandflights.com



Glowing Sky Clothing

Purely and proudly made by us in New Zealand.



The original Stewart Island born clothing company.
Exclusive Superfine Merino & Handprinted t's.
Town Centre, Stewart Island : glowingsky.co.nz



The Catlins

The Catlins offers a glimpse of rural New Zealand set amid native forests, fringed by high cliffs and golden beaches. Here, you'll find a world of waterfalls, including the tiered Purakaunui Falls, amongst the most photographed in the world. This spectacular coastal stretch is home to an array of marine life – sea lions are regular beach visitors, while dolphins frolic in the shallows. Keep your eyes peeled for the rare but distinctive hoiho, the Yellow-eyed penguin.



www.catlins.org.nz

Must Do's



CURIO BAY

Few places offer such scenic, wildlife and recreational values in one small area. This idyllic bay is home to the petrified forest, dolphins, yellow-eyed penguins and Tumu Toka Curioscape, house a world-class interpretive centre intended to educate and share the special stories of Curio Bay, its wildlife and its people.



CASCADING FALLS

The Catlins is home to some of the most photographed water falls in New Zealand. McLean Falls, Purakaunui Falls and the Matai Falls are a must do on your visit to The Catlins.



OLD SCHOOL TOWNSHIPS

Explore the history of The Catlins community by visiting Tokanui, Waikawa & Owaka. Here will you learn about the whaling, saw milling & gold mining history, which dates back to the regions settlement in the 1860's. At the cafes try the local delicacy, whitebait fritters.



UNIQUE WILDLIFE

Nestled amongst golden beaches & lighthouses are NZ fur seals/kekeno, Southern elephant seals/ihupuku, NZ sea lions/whakahao, and Yellow eyed penguins/hoiho. Explore at your own pace but remember to keep a safe distance.



GEOLOGICAL FORMS

The Catlins has a wealth of unique landforms, so follow the Southern Scenic Route and check out the numerous attractions that include the Nuggets, Jacks Blowhole, Lake Wilkie, Cathedral Caves, Slope Point and the lighthouse at Waipapa Point.



Camping

Southland is a mecca for the outdoors and has long traditions of the camping holiday. The long summer days make it ideal for a relaxed and affordable break, with easy access to our diverse world. To protect our region, please ensure you stay in a holiday park, Department of Conservation camping grounds or designated camping areas. If you are unsure please ask at an information centre (or even ask a local). There is a great variety of camping grounds throughout the region that provide you with all the conveniences of home (including a hot shower, sheltered cooking facilities and social areas).

- Be tidy and always leave the area clean (take your rubbish with you).
- Always use toilets provided.
- Protect native plants, waterways and animals.
- Respect the length of stay restrictions.
- Use biodegradable cleaning products and wash in a container away from the water.
- Consider the rights of others.
- When using a motorhome or caravan outside a conservation campsite, it must be self-contained.
- Dispose of all waste water at a dump station.
- Limit noise (e.g. generator use) between 9pm and 8am prevent nuisance.
- Always drive along formed tracks.

For more information: www.southlandnz.com, www.camping.org.nz and www.doc.govt.nz

Driving

Our beautiful landscape has many kilometres of roads that many enjoy driving on, so please ensure you obey our road rules for the safety of everyone.

- Keep left.
- Everyone must wear an approved seatbelt.
- Keep to speed limit and recommended speeds.
- Always stop at STOP signs.
- Only overtake when safe and never cross a solid yellow line.
- Drive to conditions.
- Don't drink and drive.
- Don't use a mobile phone while driving.

For more information: www.drivesafe.org.nz

The Catlins - Attractions

Bottom Bus / Catlins Coaster



T: 03 477 9083

W: www.travelheadfirst.com

E: bookings@travelheadfirst.com

Showing off the sights and delights of the scenic south. Walks to natural attractions and wildlife encounters. Small groups, fully guided personalised service. Flexible options to see **The Catlins** in one day or longer. Full Catlins tour from Dunedin, Queenstown, Te Anau or Invercargill; options to Stewart Island and Milford Sound. Year round schedule.

Waikawa Museum & Information Centre



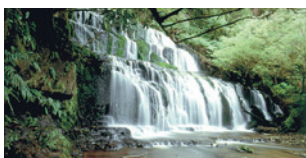
604 Niagara Waikawa Highway,
Tokanui

T: 03 2468464

E: waikawamuseum@hyper.net.nz

We take enquiries for accommodation in the Catlins as well as bookings for further afield. Local history, including shipping disasters, gold mining, sawmilling and photographs. Local research and information available. Open every day.

Catlins Information Centre



10 Campbell Street, Owaka

T: 03 415 8371

E: catlinsinfo@cluthadc.govt.nz

W: www.destinationclutha.com

Open everyday except:

- Christmas Day

- Anzac Day morning

Information on The Catlins, wildlife, environment, local events, attractions and accommodation.



OWAKA
MUSEUM
10 CAMPBELL STREET
OWAKA
THE CATLINS
03 415 8323

www.owakamuseum.org.nz
owakamuseum@outlook.com

Open Daily

The Catlins - Attractions

Catlins Horse Riding



Cara Meyer
41 Newhaven Road, RD1 Owaka
T: 03 415 8368
M: 027 6292904
E: catlinshorses@outlook.com
W: www.catlinshorseriding.co.nz

"Personalised horse riding to suit you" Experience the coastal Catlins on horseback, enjoy spectacular views while riding over farmland, through native forest & along beaches. Our emphasis is on safety & enjoyment.

The Black Sheep Boutique



11 Main Rd, Owaka 9535
M: 027 275 1880
E: theblacksheepboutiqueowaka@gmail.com
W: theblacksheepboutique.myshopify.com/

The Black Sheep Boutique is a brand new purpose built shop in the Heart of the Owaka Township. This is your one stop shopping experience in The Catlins. We boast an extensive range of Kiwiana, giftware, baby gifts, footwear, women's clothing & accessories.

Visit The Black Sheep Boutique mention this advertisement and receive a free gift.

Clutha i-SITE Visitor Centre



4 Clyde Street Balclutha
T: 03 418 0388
F: 03 418 1877
E: clutha.vin@cluthadc.govt.nz
W: www.destinationclutha.com

'Gateway to the Catlins' Regional Visitor Information Centre providing accommodation, activities, transport and information throughout New Zealand. Internet access available.

Catlins Bird Guide

Superb photographs with insightful descriptions on the birds, along with information on their habitats, many locations of which are highlighted on the guide map.

Proceeds from sales of the 'Catlins Birds' guide will be used to fund local environmental projects; it is available from either the Catlins Information Centre

E: catlinsinfo@cluthadc.govt.nz

or Forest & Bird c/o Jane Young

E: janeyoung@slingshot.co.nz

for \$10.00 plus postage.



The Catlins - Dining/Accommodation

The Point Café & Bar



Lisa Lyall
58 Esplanade, Kaka Point
T: 03 412 8800
E: lisa.lyall@hotmail.com



The Point Café & Bar is in the heart of the small township of Kaka Point - a small walk from any accommodation. Sit back and relax with panoramic views of the ocean while dining or playing a game of pool. Open 7 days a week for breakfast, lunch and dinner. Best Seafood Chowder and Blue Cod in South Otago.



Tokanui Food Centre

Tokanui food centre visitors information centre. A one stop mini-supermarket. Come and sit down for a cuppa or grab some takeaways. And yes, we are open 7 days!

Kevin & Jan 7 Niagara-Tokanui Highway RD1 Tokanui

P: 03 246 8876 F: 03 246 8523 E: tokanuifoodcentre@xtra.co.nz

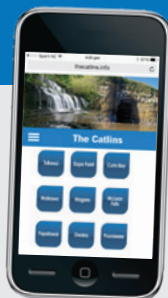
Travelling around? On the move? Go to thecatlins.info

The Catlins's mobile phone guide to Activities & Attractions, Accommodation, Shopping, Dining, Services, Maps & Information.



Simply follow the steps and make your choice from the selection - you can then ring or email them direct!

Phone, email, web, maps, it's all conveniently there!



Slope Point Accommodation

Based on a farm. Pick from our range of basic, self-contained or cottage accommodation to suit your needs. Limited spaces.

164 Slope Point Road, RD 1, Tokanui T: 03 246 8420

E: info@slopepoint.co.nz W: www.slopepoint.co.nz

Curio Bay Salthouse Motel

A modern well equipped motel, situated right on the beach, all units have panoramic views of Porpoise Bay, central heating, television and free wifi.

Host: Melissa, 517 Waikawa Curio Bay Road, No 1 RD, Tokanui 9884

T: 03 246 8322 E: stay@catlinsbeachhouse.co.nz

W: www.curio babysalthouse.co.nz

The Catlins - Accommodation

Catlins Farmstay B&B & Waterside Waikawa

Catlins Farmstay B&B offers the choice of a comfortable hosted experience with delicious breakfast or a totally self contained holiday house at Waterside Waikawa. Progress Valley Road, Catlins, Southland
T: 03 246 8843 E: june@catlinsfarmstay.co.nz W: www.catlinsfarmstay.co.nz



Waikava Harbour View
14 Larne Street, Waikawa
South Catlins
P: (03) 246 8866
E: waikawa@southcatlins.co.nz
W: www.southcatlins.co.nz

Waikava Harbour View lodge is spacious and centrally heated with four bedrooms (sleeps 2-8), conservatory, BBQ. Also available Harakeke cottage (wheelchair access) and Toi Tois cottage offering separate queen bedroom, double sofa-bed in lounge. All accommodation has full kitchen facilities, laundry, outside decks/seating, Free WI-FI Internet and Freeview TV, stunning harbour views. Book instantly on the website.

Southern Secret Motel



Papatowai, Catlins
T: 03 415 8600
F: 03 415 8777
E: southernsecret@xtra.co.nz
W: www.southernsecretmotel.co.nz

Four stylish studio units in Papatowai. Closest motel to Cathedral Caves. Surrounded by native bush & birdlife. Walk to beaches/tracks/shop. Also available are Lancewood Cottage, offering self contained one bedroom accommodation and Erehwon, a self contained three bedroom holiday home, linen provided.

Catlins Mohua Park Self-Contained Cottages



Private self-catering cottages, eco-friendly, spacious and comfortable. Forest and farmland views with forest and garden reserve for walks, historic railway station, picnics. Catlins River nearby for walks, bird watching, fishing, mountain biking. Shops and coast within 20 minutes. Breakfasts, meals and guiding available.

744 Catlins Valley Road Ph (03) 415 8613 Freephone 0800 CATLINS
info@catlinsmohupark.co.nz www.catlinsmohupark.co.nz

Pounawea Motor Camp

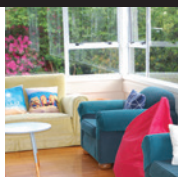
For tranquillity and a piece of nature rarely experienced elsewhere in NZ, look no further. 4km from Owaka, surrounded by native bush and the sea. Cabins, powered and tent sites, heated bathrooms. 1 Parklane, Pounawea, Owaka T: 03 415 8483
FP: 0800 122 854 E: pounawea.motor.camp@xtra.co.nz
W: www.catlins-nz.com/pounawea-motor-camp/

The Catlins - Accommodation

Thomas's Catlins Lodge & Camp Ground



Thomas's Catlins Lodge and Camp Ground offers camping sites, affordable backpacker and hotel rooms, based in Owaka on the Southern Scenic Route. From here, you can explore the charms of the Catlins. We are also pet friendly, free WIFI, and breakfast included options.



Cnr Ryley & Clark Streets, Owaka, Catlins Coast, New Zealand
Phone +64 (0)3 415 8333
Email stay@thomascatlins.co.nz | www.thomascatlins.co.nz

Tiromoana - Catlins Ocean View Accommodation

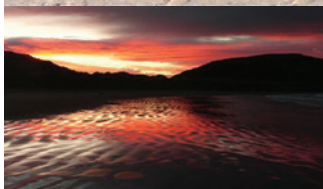


Tracey & Carey Hancox
67 Hanning Road, R D 2, Owaka
M: Tracey 027 212 0033
or Carey 027 212 0008
E: info@catlinsoceanview.co.nz
W: www.catlinsoceanview.co.nz

Tiromoana is fully self-contained, superior accommodation, just five minutes south of Owaka and within close proximity to the magnificent attractions offered within The Catlins area. Relax and unwind in comfort and style with magical views which seem to change as the day progresses - from morning to night. Combine this with peaceful and tranquil surroundings, and the comfort and style our property offers, and you can be assured of an incredible visit to The Catlins.



Grant & Deborah
324 Newhaven Rd, Surat Bay
RD 1, Owaka Valley, Catlins Coast 9585
E. newhaven@ihug.co.nz
W. www.newhavenholiday.com
T. + 64 3 415 8834
F. www.facebook.com/catlinsnewhavenholiday



Award winning seaside accommodation & camping at Surat Bay - ranked No 1 in the Catlins by Trip Advisor. Tranquil, peaceful, with the flow of the tide, sand between your toes, beach sunsets / sunrises, rainforests walks, a chorus of native birds, spectacular wildlife - the rare and critically endangered NZ sea lion. Central to all Catlins attractions. Self contained Tourist Flats, Cabins, powered and grassed tent sites.





Gore District

Culture and heritage are major drawcards for the southern rural town of Gore. Visitors are often impressed with the modern facilities and 'city advantages' available in this rural setting. The town, famous for its country music, illicit whiskey making and brown trout fishing, is also a growing hub of history, heritage and artwork. Surrounding Gore is a variety of small towns like Mataura, Waikaia and Mandeville, that still serve their roles in rural communities while telling the stories of their industrial past.



www.gorenz.co.nz

Must Do's



EASTERN SOUTHLAND GALLERY

The international art collection of Dr John Money relocated from Baltimore, Maryland USA boasts over 300 works of art. A collection of over 60 pieces of work by leading contemporary New Zealand artist Ralph Hotere and innovative exhibition programme make the 'Goreggenheim' Gallery a must do.



HOKONUI MOONSHINE MUSEUM

Tales of the exploits of Scottish settlers and their illicit whisky distilling and bootlegging is brought to life at the Moonshine Museum. It is currently undergoing major renovation and is due to reopen in mid 2021.



CROYDON AVIATION HERITAGE CENTRE

New Zealand's oldest aerodrome lets visitors enjoy its collection and see the restoration work of some of New Zealand's most historic planes. For the budding flying ace, you can have an aerial view of Southland on a flight in one of their classic collection.



FLY FISHING

Cast a line in the Matura River which is world renowned for its famous large brown trout. Follow up with a visit to the Gore Museum which hosts a collection of fishing memorabilia since its popularity grew in district in 1870's.



DOLAMORE PARK

Take a break with this spectacular park on the Hokonui hills. A great place to take an easy hike through native bush, let the children play on the local activities, wander through gardens or relax in the sun with a picnic. For the garden enthusiast Gore features a number of historic gardens.

Gore District - Attractions

esg

**eASTERN
SOUTHLAND
GALLERY**

Home of the internationally renowned
John Money Collection
& **Ralph Hotere Gallery**

*Also featuring a diverse programme
of temporary exhibitions and events.*

Cnr Hokonui Drive & Norfolk St, Gore
(opposite Gore Visitor Centre)

03 208 9907 | **www.esgallery.co.nz**

Free admission - donations welcome



THE HOKONU MOONSHINE MUSEUM & GORE HISTORICAL MUSEUM

The Hokonui Moonshine Museum celebrates the history of illicit whiskey making in the southern region - *admission charges apply.*

The Gore Historical Museum celebrates Gore's social history with a variety of displays and special collections - *admission free.*

Hokonui Heritage Centre, 16 Hokonui Drive, Gore
(Shares entrance with Visitor Centre)

Phone: (03) 203 9288 **www.gorenz.com**

Currently under renovation, due to reopen mid 2021



The Gore Visitor Centre for

Local advice | **Local merchandise** | **Local hospitality**

Our friendly staff can also book your travel, accommodation and sightseeing needs throughout New Zealand.

Contact us on  **03 203 9288**  **goreinfo@goredc.govt.nz**

www.gorevisitorcentre.co.nz | **www.gorenz.com**

 **www.facebook.com/gorenzsouthland**

Gore District - Accommodation/Dining

Asure Oakleigh Motel

1

Set in mature gardens in a very quiet setting 13 units - 2 with spa baths. 6 two-bedroom units, 4 one-bedroom units and 3 new executive studio units. Short walk too town and restaurant. 70 Hokouni Drive Gore FP: 0800 625 534
E: info@oakleighmotel.co.nz W: www.oakleighmotel.co.nz



Heartland HOTELS

2

Heartland Hotel Croydon
100 Waimea Street, Gore Phone: (03) 208 9029
croydon@heartlandhotels.co.nz scenichotelgroup.co.nz

Whether you are in Gore for business or pleasure, there is a warm southern welcome waiting for you. With 38 rooms, conference facilities, and restaurant bar, staying at Heartland Hotel Croydon will add some true southern flavour to your visit. Relax and enjoy the serenity and uniqueness of this part of the countryside and let our professional staff take care of all your needs.

Riversdale Hotel

3



74 Newcastle Street
Riversdale 9744
T: 03 2025841
M: 027 6023558
E: riversdalehotel@yahoo.com

- Accommodation, Bar, Café, Restaurant
- Open 7 days
- Situated in Northern Southland amongst some of the best trout fishing rivers in N.Z. We can guide you around our local area.
- Café food and coffee available all day great lunches and evening meals.
- 10 Comfortable rooms available.
- Free Wii Fi, ATM, TAB, Bottle store.
- Like us on Facebook

Country Cottage Cafe



87 Main Street
Mataura
M: 027 669 3419
E: dale@cccafe.co.nz
Country Cottage Cafe

Country Cottage Cafe specialises in home-made food and great coffee. Relax in an inviting atmosphere served by staff with a strong focus on creating a positive environment. All-day breakfast, gluten-free food options, savoury and sweet. Dine-in or takeaway. Open Monday to Saturday.

The **THOMAS GREEN** PUBLIC HOUSE & DINING ROOM

The stylish **Thomas Green Public House & Dining Room** is centrally located in the heart of Southland, Gore. It embraces local traditions giving visitors one of New Zealand's most memorable small town experiences. A distinctive heritage has helped shape Gore's warm and welcoming community. Combine this with passionate chefs working with farm-fresh, locally grown ingredients, a stunning environment and the result is a dining experience second-to-none.

Visit our website for current menus along with lunch and evening dining times.

Bookings recommended for lunch and dinner.

30 MEDWAY STREET, GORE • P: 03 208 9295
WWW.THETHOMASGREEN.CO.NZ



Travelling around? On the move? Go to **SouthlandNZ.info**

Southland's mobile phone guide to **Activities & Attractions, Accommodation, Shopping, Dining, Services, Maps & Information.**



Simply follow the steps and make your choice from the selection - you can then ring or email them direct!

Phone, email, web, maps, it's all conveniently there!



Gore District - Attractions



"Don a leather jacket, helmet and goggles and experience the thrill of a flight in an open cockpit vintage Tiger Moth."

Old Mandeville Airfield, Mandeville, RD6 Gore
Phone: 03 208 9755 Email: croydon.aircraft@esi.co.nz
www.croydonaircraft.com



Phone: 03 208 6046
Email: aviationmuseum@goredc.govt.nz
www.experiencemandeville.com
1558 Waimea Highway,
Mandeville, R.D. 6, Gore 9776
Check us out on Facebook

The Croydon Aviation Heritage Centre has on display the largest collection of de Havilland Vintage Aircraft in the Southern Hemisphere.

Come and experience one of Southlands "best kept secrets"
Admission charges apply

Summer Hours: Oct to April
Mon – Fri 9.30 – 4.30pm
Weekends – 10-4pm
Winter Hours will apply May to September





Western Southland

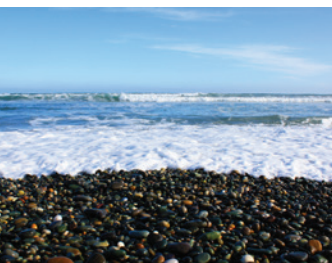
Blessed with brilliant outdoor pursuits, Western Southland has an impressive balance of activities and relaxation. The popular seaside village of Riverton, hosts a variety of relics from the past (both Maori and European whalers), easy access to recreation and great place to unwind. Further along the road Tuatapere is the perfect spot for enjoying the slower pace of life and provides a great base for many of the area's activities. Also pretty well known for their local sausages!

Must Do's



JET BOATING

Contemplate the scenic Lake Hauroko, New Zealand's deepest lake, with a cruise then get an adrenaline rush with one of the jet boat operators on the Wairaurahiri River – the steepest river in New Zealand to be navigated by commercial jet boat operators.



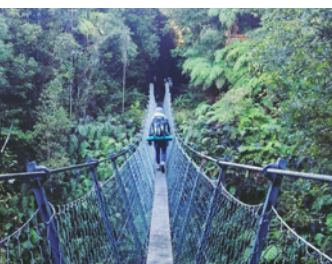
GEMSTONE BEACH

Gemstone Beach is known for its constant state of change from sand to stones with the storms and tides. Semi-precious gems such as garnet, jasper, quartz and nephrite can often be found on the beach.



COLAC BAY

For surfers, food lovers, history buffs or those simply contemplating the power of the great Southern Ocean, Colac Bay and its surrounds offer a great place to slow down and take a break.



TUATAPERE HUMP RIDGE TRACK

Set to be New Zealand's next Great Walk, the Tuatapere Hump Ridge Track is a diverse and stunning 3 day loop track from sub-alpine wilderness to sea-level views and over historic viaducts in the heart of native forest.



CLIFDEN

Hidden, but full of heritage – from the freely accessible limestone caves (make sure you have sturdy shoes and a torch) to the photographic historic bridge.

Western Southland - Riverton



TE HIKOI
SOUTHERN JOURNEY
"Bringing the South Coast's history alive"

Museum and Information Centre
Open 7 days 10am-4pm
(5pm summer)
172 Palmerston Street, Riverton
info@tehikoi.co.nz www.tehikoi.co.nz
Phone 03 234 8260



Café • Bar • Restaurant
Not just a restaurant, it's an experience

126 Rocks Highway, Riverton
Phone 03 234 8274
beachhouse.riv@gmail.com
www.rivertonbeachhouse.co.nz

Award winning dining • Fabulous coffee
Fresh local food • Fully Licensed
Open Wed - Sun • Courtesy Coach Available



Southland Surf School

Surfboard - SUP - wetsuit hire - LESSONS Have you dreamed to surf?
Here is your opportunity! A fun and safe learning environment. All equipment supplied. Experience 3 great local surfing locations Riverton, Colac Bay & Monkey Island. JESS TERRILL M: 027 864 7230 E: jessterrill@gmail.com

Western Southland - Riverton

La Riviera Bed & Breakfast



136 Palmerston St, Riverton
T: 03 234 9100
E: stay@larivierabnb.co.nz
W: larivierabnb.co.nz

Stunning historical 5 bedroom Guest House, amazing views. Ideal for group getaways. Continental breakfast. Fully equipped dining room. Cosy wood burner in lounge room. TV/DVD and hi-speed wifi. Parking. Wheelchair access. Book via website or phone.

Colac Bay Tavern & Holiday Park



- The Bay Backpackers
- Powered Sites
- Heated Cabins
- Sheltered Tent Sites
- Kitchen & Lounge
- Laundry Facilities
- Undercover BBQ Area
- Camp Store
- Free Wi-Fi
- Family & Pet Friendly
- Great Surfing, Fishing & Swimming Beach
- All Day Food & Bistro Meals at the Tavern from 11am til late 7 days a week

Look for us beside the Surfie Statue

"A quiet holiday park in a beautiful seaside bay"



Your Host: Wazza
Ph/Fax: (03) 234 8399
Email: wazzabevin@gmail.com
www.colacbay.co.nz



Western Southland - Tuatapere



Wairaurahiri Jet NZ's Ultimate Adventure



- Full day adventures
- Become an Eco Warrior with us

**One
convenient
booking
contact**

Johan & Joyce

**Freephone
0800 376 174**

**Web
www.wjet.co.nz**

**Email
info@wjet.co.nz**

Lake Hauroko Tours



- Dusky Track transport
- Half day trips

Southern Scenic Jet Waiau River at Historic Clifden Suspension Bridge



- \$49pp Excitement adventure
- Under 5's & over 90 years free
- Fishing charters



good
mood
food

Cafe style,
great coffee

Western Southland - Tuatapere



Fiordland Helicopters



17 Findlay Road, RD 2, Otautau 9682
Phone Dale or Anita Green
Mob: 0275062418

Scenic flights, hunting and diving trips, for all your helicopter needs. Why not make it a combo with Wairaurahiri Jet and enjoy the ultimate adventure. Come explore our slice of paradise, on the edge of Fiordland National Park. Pilot has over 12 years experience and flies a twin engine for your added safety.

Tuatapere Hump Ridge Track



31 Orawia Road, Tuatapere
T: 03 226 6739
FP: 0800 486 774
F: 03 226 6074
E: walk@humpridgetrack.co.nz
W: www.humpridgetrack.co.nz

Your Humpridge Track experience will have more wilderness....less people Walk through stunning coastal, forest and mountain scenery on the Humpridge Track. Book now! Freedom packages at \$245 to Guided packages at \$1695 per person.



Last Light Lodge



Craig Rutland
2 Clifden Highway 9620 Tuatapere
T: 03 226 6667
E: lastlightlodge@gmail.com
W: www.lastlightlodge.com

Close to Fiordland National Park, South Coast Track and the Hump Ridge Track, on the Southern Scenic Route, our lodge has 21 private rooms with shared facilities and a camping ground, surrounded by beautiful gardens. We offer in-house guest homemade gourmet meals by arrangement. Come to Tuatapere, the last town to see the sunset in New Zealand!



Southland Locator Beacons

Save a Life -
It could be
your own!

Be Safe Be Prepared
Be Responsible

Buy or Hire
a locator beacon

Refer to our website for local stockists

\$15 for 1 day, \$30 for 3 days
or \$40 for 7 days



John Munro Ph: 03 226 6341 Mob: 0274 122925
beacons@ihug.co.nz www.locatorbeacons.co.nz



Central Southland

Central Southland and its 1.5 million hectares of farmland is centred around the commercial centre of Winton. The region offers a variety of leisurely pursuits and attractions. Those keen to be carried back to another time will appreciate the heritage trail which takes in historic townships and treasures left by the region's pioneers.

Must Do's



SHOPPING & CUISINE

Trawl the variety of locally owned boutique stores, then treat yourself in one of local food specialists for some tasty delights.



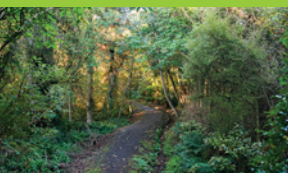
COUNTRY PUBS

Visit the local taverns, affectionately known with names like the Bush, Travellers Rest, Top, and Middle Pub for a traditional meal and beverage with the locals.



HERITAGE TRAILS

Take in the rich mining and agriculture history on the Takitimu Heritage Trail, or explore the growth of the urban heart of Central Southland on the Winton Heritage Trail.



LOCALS FAVOURITES

Golf courses abound, try 9 holes at Drummond, Winton or Hedgehope, tee time is usually very relaxed. Look out for the horse racing at Winton Race Course, or take a walk up Forest Hill Reserve to survey the farmlands that surround it.

Central Southland

The Hideaway 201

RESTAURANT & BAR

The Hideaway 201, situated in Lochiel, is the home to a fully licensed restaurant and bar and a permanent silk lined marquee, all set on ten acres of magnificent gardens. A popular destination with a point of difference and an exquisite tasty menu.



Open: Thur-Sun from 11am Ph: 03 221 7364
E: hideaway201restaurant@gmail.com
www.thehideaway201.co.nz Follow Us on Facebook

LACE UPS

190 Great North Road
Winton 9720
P: 03 236 7046



Located on Winton's main street, Lace Ups Shoes offers the latest styles of footwear for Men, Women and Children, as well as a great range of leather bags and socks. We stock popular brands such as Merrell, Rieker, Bresley, Minx, and Bobux.

Opening hours: Monday – Friday 10am – 4:30pm,
Saturday 10am – 1pm

laceups@outlook.co.nz | www.laceups.co.nz





Northern Southland

Northern Southland is flanked by beautiful rolling farmland and the majestic Takatimu Mountains. The Mataura River is widely considered the best dry fly fishing river in the world and the surrounding hills and waterways provide bush-clad outdoor adventure sites popular with trampers, anglers, campers and boaties.



www.aroundthemountains.co.nz

Must Do's



CYCLING

With some of the premier cycling trails and mountain bike tracks in the country, riders can meander through high country farms, scenic lakes, rivers and diverse landscapes. The stunning Northern Southland scenery can be enhanced by overnighting in the backcountry huts sprinkled along the way.



FLY FISHING

Widely considered the best dry fly fishing river in the world and the surrounding hills and waterways provide bush-clad outdoor adventure sites popular with trampers, anglers, campers and boaties. With easy public access, plentiful fish and water so clear it is often described as 'gin-clear'.



QUAINT RURAL TOWNS

The townships of Lumsden, Athol, Garston, Mossburn and Kingston are dotted with friendly country cafes serving up fresh kiwi cuisine to visitors and locals alike, while the small local shops are full of unique wares.



AGRICULTURE HERITAGE

Sprinkled amongst the busy agricultural landscape are echoes of the rolling past, with rail and agricultural machines and architecture heralding the efforts of the Southland pioneers.



GREAT OUTDOORS

Northern Southland is full of real rugged New Zealand, so take time to visit the backcountry in places like Mavora Lakes, Waikaia or Nokomai. For an immersive experience, join Real Country at an authentic maimai (duck hunters hut) for a bespoke New Zealand experience.

Northern Southland



COME & STAY!

KINGSTON
HOLIDAY PARK

The perfect stop between Queenstown & Milford Sound!



Contact us today to reserve your stay!

P 03 248 8501 / 0800 807 836
W www.kingstonholidaypark.co.nz
E stay@kingstonholidaypark.co.nz

Wifi • Showers • Dump Station • Facilities • Movies

Motels • Cabins • RV Sites • Tent Sites

Nokomai Valley Accommodation



Nokomai Station
1212 Nokomai Road, 3.R.D., Lumsden
P: 03 248 8850
E: nokomai@xtra.co.nz
W: www.nokomai.co.nz

Nokomai Station is a high country sheep farm in the scenic mountains of Northern Southland, just one hour south from Queenstown. Attractive modern guest cottages complete with Wifi invite you to stay and enjoy some true NZ country life. Worldclass fly fishing • Walking trails • Helicopter tours • Farm activities • Around The Mountain Cycle Trail.

Route 6 Cafe and Bar



22 Diana St, Lumsden
T: 03 248 7135
cafe@route6.co.nz
www.route6.co.nz
www.facebook.com/route6cafe

Modern 1950's themed Americana cafe with a Kiwiana touch! Atmosphere, class, great food and good old Southern Hospitality, we have it all. For an experience that you will not forget make sure you stop by in Lumsden at Route 6 Cafe. We are the perfect halfway stop between Invercargill and Queenstown/Te-Anau. We are easy to find - just look for the car on the roof in the middle of town. Open 7 days - Mon-Wed 8am-8pm, Thurs/Fri 8am-10pm Sat/Sun 9am-10pm.

Welcome Rock Trails



M: 027 239 2628 or 027 406 7334
E: trails@welcomerock.co.nz
W: www.welcomerock.co.nz

Hiking and Mountain biking plus back country huts. Hand built, premier private hiking and mountain biking trail set in high country farm land, away from the crowds. Single, multi day or guided options available.



Subantarctic Islands

The Subantarctic Islands are the southmost isles of New Zealand, and have been designated a UNESCO World Heritage site. Wild weather, vast seabird colonies and brightly flowering megaherbs make the islands a unique environment. Uninhabited in the 2000s, the islands have a human history that includes Polynesian seafarers, European sealers, castaways, wartime coast-watchers, scientists and hopeful – but unsuccessful – farmers Discover the isles on an intrepid expedition by sea from Bluff.



**YOUR GATEWAY TO NZ'S
SUBANTARCTIC ISLANDS**

Call 0800 262 8873 • www.heritage-expeditions.com



Heritage Expeditions

Antarctica • Western and South Pacific
Subantarctic Islands • Russian Far East

Gateways

Southland features and neighbours the finest New Zealand has to offer, and easily accessed. With international airports at Queenstown and Dunedin, and direct flights from Auckland five times a week to the Invercargill domestic terminal, flying in is a breeze. A grand tour is an ideal way to take in the South, with the Southern Scenic Route one of the best driving tours in the world (Traveller Magazine 2015).



Travelling north east (2.5 hours from Invercargill) takes you to New Zealand's heritage capital of **Dunedin**, a vibrant student city that is abound with interesting heritage, culture, industrial and ecotourism activities.



To the west (2 hours from Invercargill) you will find **Fiordland**, New Zealand's largest National Park. Renowned home of Mitre Peak and the awe-inspiring fiords of Milford Sound and Doubtful Sounds. The lakeside town of Te Anau provides a great base to explore the region with a number of accommodation options and a variety of activities on or off the water.

Join us
on Queenstown's
**MOST ICONIC
ATTRACTION**



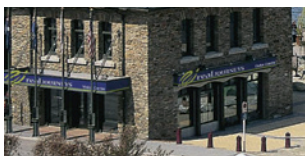
0800 65 65 01
realjourneys.co.nz

Take state highway 6 north to the deep waters of Lake Wakatipu and the rugged, snow-topped peaks of the Southern Alps lies the resort town of **Queenstown** (2 hours from Invercargill). Famous for its adventure attractions and spectacular mountain views along with its many cafes, restaurants and bars.

Or travel through Gore on state highways 90 and 8 to the wine country of the **Central Otago**, and through to stunning lakeside town of **Wanaka**.



Real Journeys Visitor Centre, Queenstown



88 Beach Street, Steamer Wharf,
Queenstown
T: 0800 65 65 01
E: contact@realjourneys.co.nz
W: www.realjourneys.co.nz

TSS Earnslaw/Walter Peak High Country Farm, Milford Sound and Doubtful Sound Daytime and Overnight Cruises, Milford Track Day Walk, Coach Connections, Flightseeing, Te Anau Glowworm Caves and Stewart Island.



TSS EARNSLAW VINTAGE STEAMSHIP 1912

Cruise Lake Wakatipu to Walter Peak onboard our vintage steamship; once there you can:

- Join a Farm Tour (including morning or afternoon tea)
- Enjoy a Gourmet BBQ Lunch or Dinner at the Colonel's Homestead Restaurant

Other exciting options include guided Electric Trail Bike tours, horse treks and cycling.



Southland Map



SOUTHLAND AND FIORDLAND



Legend

- Southland/Otago boundary
- Main touring route
- Distance in km
- State highway
- Southern Scenic Route
- Other roads
- 4WD roads
- Tramping and walking tracks
- i-SITE Visitor Centre
- City
- Major town or tourist centre
- Small town or locality

Map Copyright © Allan J Kynaston

Inlet / Whaka a Te Wera

Stewart Island/Rakiura

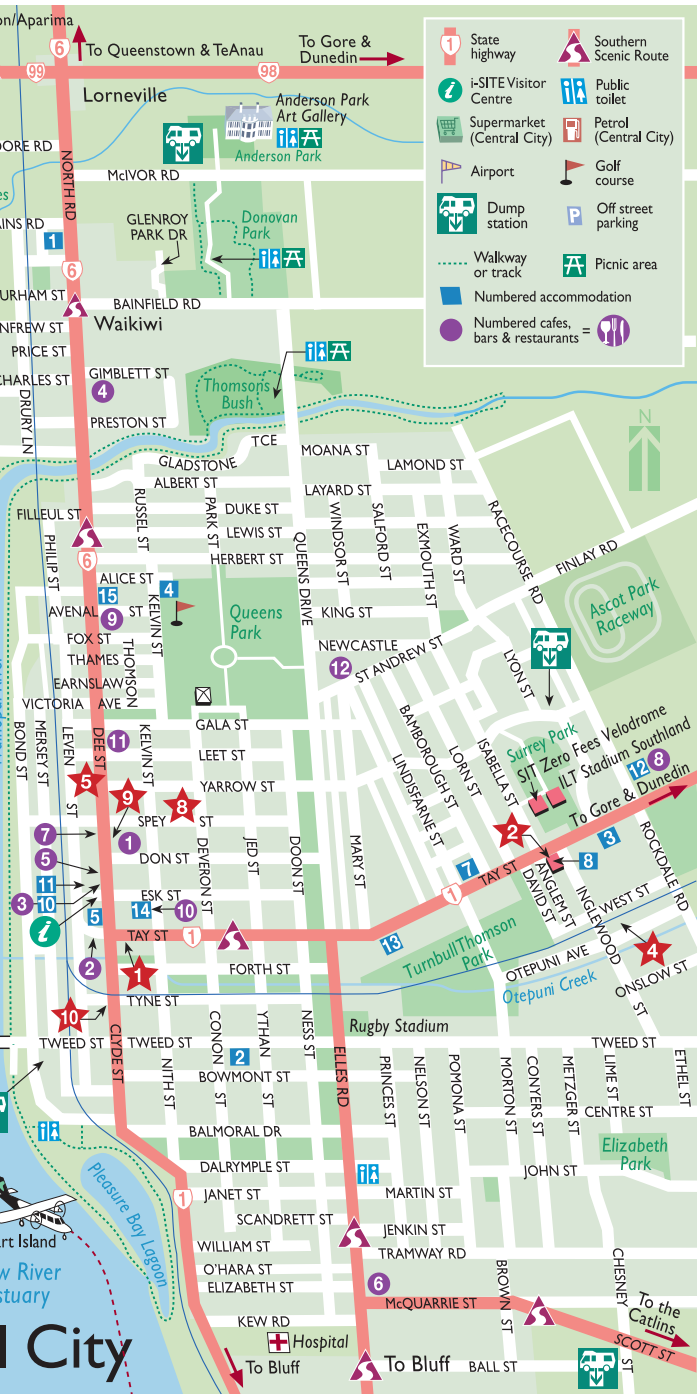
Port Adventure

						77 (01:00)	Balclutha
					72 (00:50)	149 (02:15)	Gore
				65 (00:50)	137 (01:45)	215 (03:00)	Invercargill
		37 (00:40)	102 (01:45)	174 (02:30)	252 (04:00)		Riverton
	130 (02:15)	159 (02:25)	137 (02:00)	209 (02:45)	286 (04:15)		Te Anau
	120 (02:30)	251 (04:35)	280 (04:45)	258 (04:20)	330 (05:15)	407 (06:35)	Milford
301 (05:05)	180 (02:30)	170 (02:45)	189 (02:45)	167 (02:35)	240 (03:15)	281 (04:25)	Queenstown
Milford	Te Anau	Riverton	Invercargill	Gore	Balclutha	Dunedin	Distance km (Driving Time)

NOTE: Driving times shown above allow for some stops for sightseeing/refreshments

Invercargill Map





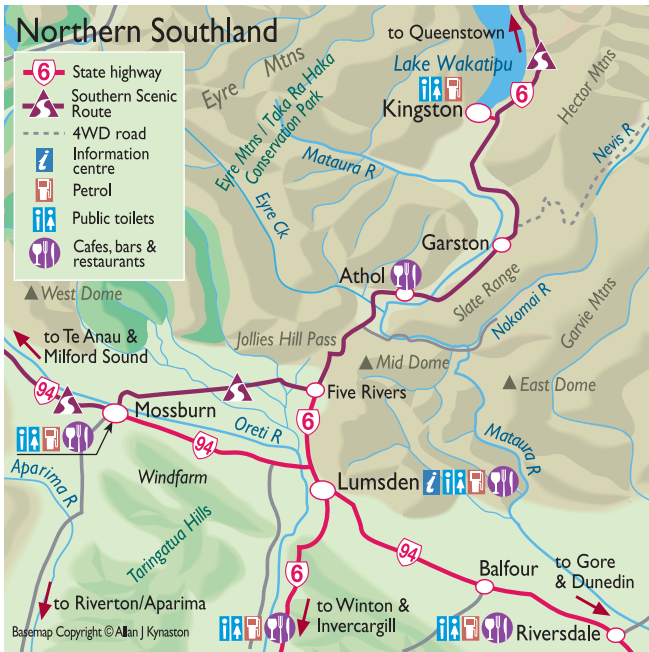
- | | | | |
|--|------------------------------------|--|-----------------------|
| | State highway | | Southern Scenic Route |
| | i-SITE Visitor Centre | | Public toilet |
| | Supermarket (Central City) | | Petrol (Central City) |
| | Airport | | Golf course |
| | Dump station | | Off street parking |
| | Walkway or track | | Picnic area |
| | Numbered accommodation | | |
| | Numbered cafes, bars & restaurants | | |

City

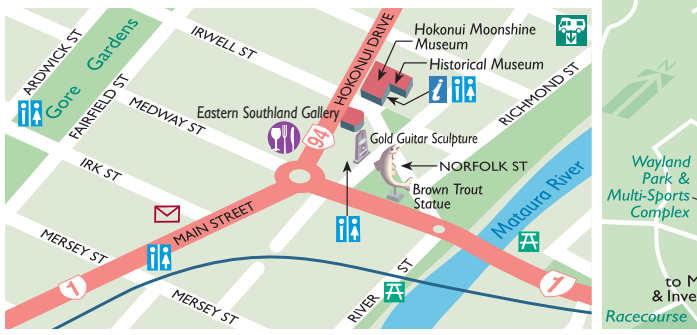
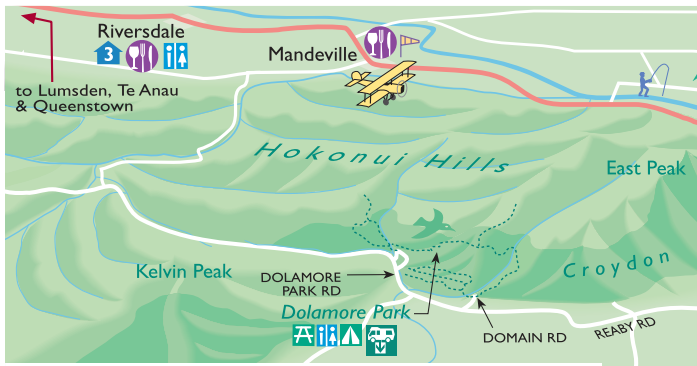
Bluff, Stewart Island Maps



Northern Southland Map



The Catlins Map



Gore District Map



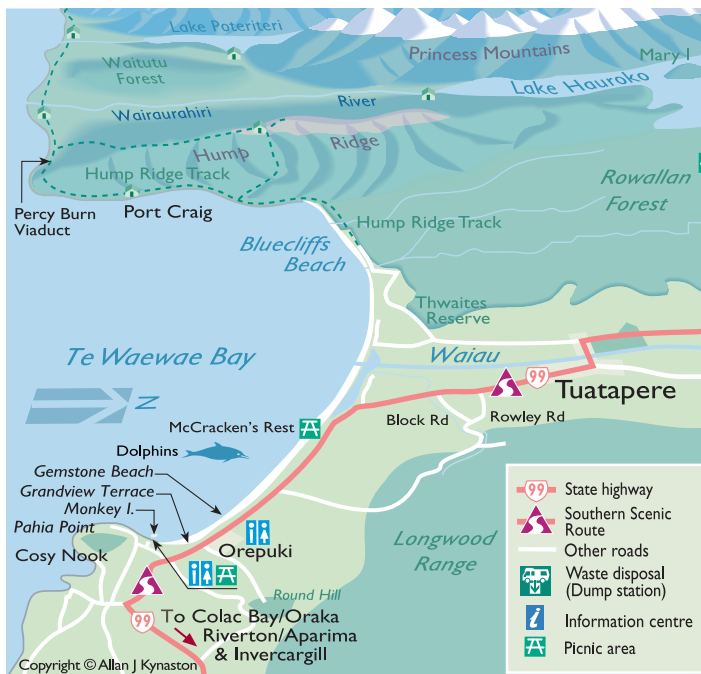
Western Southland Maps

Raratoka (Centre Island)

Riverton/Aparima & Colac Bay/Oraka

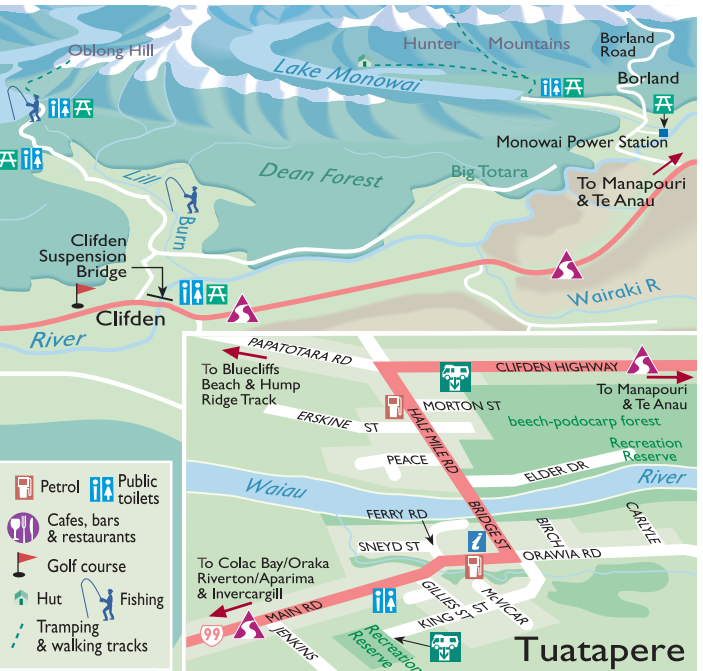


	State highway		ATM machine		View point		Surfing
	Southern Scenic Route		Petrol		Waste disposal (Dump station)		Fishing
	Foot track		Supermarket		Holiday Park		Golf course
	Information centre		Post centre		Picnic area		
	Museum		Bed & Breakfast		Swimming		
	Public toilets		Cafes, bars & restaurants				





Basemap Copyright © Allan J Kynaston



THE NEW ZEALAND WE ALL DREAM OF



Southland 

www.southlandnz.com