



STEVENS POINT AREA TRAILS GUIDE

SPRING



SUMMER



FALL



WINTER



Conveniently located in the center of the state, the Stevens Point Area is a recreationalist playground in the heart of central Wisconsin. Fish the diverse rivers of the Wisconsin River and the backwaters, including the 6,830 acre Lake DuBay, a hotbed for walleye, northern pike, musky and bass. Paddle the backwaters and sloughs, trout streams and smaller lakes for more variety. On land, leisurely follow one of the many great trails and natural areas perfect for bird watching and wildlife viewing. The Stevens Point Area has no shortage of great recreational opportunities.

In this guide you will find information about exploring the outdoors in the Stevens Point Area, including hiking, bicycling, paddling, cross-country skiing, snowshoeing and horseback riding. Most of the trails in this guide are multi-use, and may vary by season. Routes provided for road-biking and paddling are not a complete list, rather a list of popular routes worth exploring. Be sure to check out the map, trail restrictions and use fees before heading out. For more information on camping and lodging, trail conditions and other area attractions in the Stevens Point Area visit StevensPointArea.com or call 715-344-2556.

This guide is compiled by the Stevens Point Area Convention & Visitors Bureau and Active Portage County. Active Portage County is dedicated to create a healthier Portage County by encouraging citizens to get active and lead healthier lives through programs and planned activities to motivate citizens to get into regular exercise. The Stevens Point Area Convention & Visitors Bureau serves as the destination marketing organization for Portage County.

Publisher: Stevens Point Area Convention & Visitors Bureau

Editor: Melissa Sabel

Design: Ali Bachmann

Photos in this guide have been provided by: Bob Mosier, KT Elements, Mead Wildlife, Oliva Locascio Film & Photo, and Patty Dreier

PLAN YOUR TRIP

The area offers more than 800 campsites, at county, state and private campgrounds. For those looking for a little more luxury, try one of the area's cabins, Bed & Breakfasts or hotels. After a day filled with exploring the trails and waterways in Portage County, find other activities worth exploring in the Stevens Point Area by visiting StevensPointArea.com.



ADVENTURES ON LAND

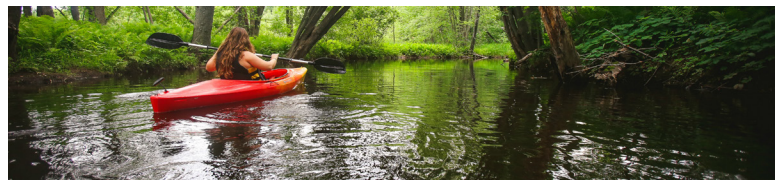


Start your journey by exploring the trails and natural areas in Portage County.

With no shortage of great recreational trails, like the Green Circle Trail, the Tomorrow River State Trail, Schmeeckle Reserve, and the Ice Age Trail, be sure you don't overlook the smaller and lesser known trail systems. For adventures on two wheels - from trail riding to road biking - get some miles in along the scenic routes on trails and rural roads.

Always tell someone where you are heading and when you expect to return.

ADVENTURES ON WATER



Venture out on one of the many waterways in Portage County.

Numerous lakes, an array of rivers, streams, and flowages offer a wide variety of opportunities to be active, whether you want to fish, kayak, canoe, boat or swim. With routes for novices to pros, explore the distinct paddling routes in the area.

	# OF SITES	TENT AREAS	SHOWERS	FLUSH TOILETS	SWIMMING	PLAYGROUND
PRIVATE CAMPGROUNDS						
Lake DuBay Shores 715-457-2484 dubayshores.com	150 (120W/E)	✓	✓	✓	✓	✓
River's Edge 715-344-8058 riversedgewisconsin.com	115 (10W/E)	✓	✓	✓	✓	✓
Vista Royale 715-355-6860 vistaroyalle.com	275 (155 W/E) (120 W/E)			✓	✓	✓
Wild West 715-824-5112 wildwestcampground.com	54 (54W/E)	✓	✓	✓		✓
COUNTY & STATE CAMPGROUNDS						
Collins Park co.portage.wi.us/parks	27 (27E)	✓			✓	✓
DuBay Park co.portage.wi.us/parks	31 (31E)					
Lake Emily Park co.portage.wi.us/parks	67 (12E)			✓	✓	✓
Jordan Park co.portage.wi.us/parks	25 (22E)	✓	✓	✓	✓	
Hartman Creek 715-258-2372 dnr.wi.gov	101 (23E)	✓	✓	✓	✓	✓

(E) = Electric (W/E) = Water / Electric
*All campgrounds listed have dump stations.

	# OF ROOMS	PET FRIENDLY	INTERNET	SWIMMING	FREE BREAKFAST	RESTAURANT ON-SITE
COTTAGES & CABINS						
Amherst Riverdance Cabin 715-824-7151 AmherstRiverdanceCabin.com	1			✓		
Lakeview Log Cabin Resort 715-693-2595 LakeviewLogCabin.com	6	✓	✓	✓		
Rustons Guest Cottages 715-446-2508	2			✓		
Witts Linger Longer Cabin Rental 715-459-5779 WittsLingerLonger.com	2	✓				

	# OF ROOMS	PET FRIENDLY	INTERNET	POOL	FREE BREAKFAST	RESTAURANT ON-SITE
BED & BREAKFASTS						
Amherst Inn 715-824-2326 AmherstInn.com	8			FW		✓
Artha Sustainable Living Center 715-824-3463 ArthaOnline.com	3			FW		✓
Dreams of Yesteryear 715-341-4525 DreamsOfYesteryear.com	6			FW		✓
A Victorian Swan On Water 715-341-0595 VictorianSwan.com	4			FW		✓
HOTELS						
AmericInn-Plover 715-342-1244 AmericInn.com	64	\$25	FW	✓	✓	
Baymont Inn & Suites 715-341-8888 BaymontInns.com	49		FW			✓
Cobblestone Hotel & Suites 715-343-0522 StayCobblestone.com	60	\$25	FW	✓	✓	✓
Comfort Inn- Plover 715-342-0400 ComfortInn.com	68	\$25	FW	✓	✓	
Comfort Suites 715-341-6000 ComfortSuites.com	105		FW	✓	✓	
Country Inn & Suites 715-345-7000 CountryInns.com	72	\$25	FW	✓	✓	
Days Inn & Suites 715-341-9090 DaysInn.com	86	\$10	FW			✓
Econo Lodge Inn & Suites 715-341-5110 EconoLodge.com	120	\$15	FW	✓	✓	
Fairfield Inn & Suites 715-342-9300 Marriott.com	60		FW	✓	✓	
Hampton Inn by Hilton 715-295-9900 HamptonInn.com	64		FW	✓	✓	
Holiday Inn Express 715-344-0000 HIExpress.com	66	\$25	FW	✓	✓	
Holiday Inn Hotel 715-344-0200 HolidayInn.com	149		FW	✓		✓
Knights Inn 715-344-3434	58	\$10	FW			✓
La Quinta Inn & Suites 715-344-1900 1038.LQ.com	73	NC	FW	✓	✓	
Point Motel 715-344-8312 PointMotel.com	44		FW			

FW = Free Wi-Fi
NC = No charge

**LAKE JOANIS
(SCHMEEKLE RESERVE)**

2419 N. Point Dr.
Stevens Point, WI 54481



Lake Joanis is a great spot for beginner paddlers. The lake is open for paddlers but swimming is not allowed. You can easily park a car on Maria Drive to the south and walk a short distance to the beach. Paddle around the lake for a short trip or stay all day. Lake Joanis is surrounded by trees that block the wind and with no motorboat traffic, the lake is small and safe for children to try out kayaking for the first time. Stay until sunset and you may see deer come to the edge of the lake for a cool drink or an evening swim.

Outdoor Rentals are available, see page 3. For more, contact the Stevens Point Area Convention and Visitors Bureau.

LAKE JOANIS



TRAIL NAME AND LOCATION	MAP PAGE	RESTROOM	MILEAGE	CAMPING	PETS
Erickson Natural Area / Kozickowski	27		0.5	✓	
Green Circle Trail and Spurs	14	✓	26	✓	
George Mead Wildlife Area	24	✓	80		
Ice Age Trail	26		1000	✓	
Iverson Park	30	✓	2.7	✓	
Jordan Park				✓	✓
Lake Emily County Park	27	✓		✓	
Wolf Lake Park	27	✓			
Schmееkle Reserve	27	✓	0.5		
Standing Rocks Park (F)	27	✓	13	✓	
Tomorrow River State Trail (F)	27		28		
State Natural Areas	27				
ROAD BIKING ROUTES					
Old Wausau road	27	✓	11		
Plover to Amherst	14	✓	40	✓	✓
Lake Emily Loop	24	✓	28	✓	
Stevens Point to Polonia	26	✓	22	✓	
Wetlands	30	✓			
West Loop		✓	43.8		
Sunset Lake Area		✓			
PADDLING ROUTES					
Wisconsin River North (I)	27		4		
McDonald Island	14		1-2hr		
Blue Heron	24		3-4	✓	
Upper Plover River (I)	26		8	✓	
Lower Plover River (B/I)	30				
McDill Pond (B)	30		2-4hr		
Tomorrow River (I)	30				
Lake Joanis (B)	30				

(F) = Trail Fee (B) = Beginner paddling route
(I) = Intermediate paddling route

OUTDOOR RENTALS

DIVEPOINT SCUBA PADDLE & ADVENTURE CENTER

Rents kayaks and stand-up paddle boards.

944 Main St., Stevens Point
715-344-3483 | DivepointScuba.com

NATURE TREKS

Rents bikes, kayaks and canoes. Packages include free shuttle service within Portage County.

4201 Main St., Stevens Point
715-254-0247 | NatureTrekRentals.net

RUSTY'S BACKWATER SALOON

Rents canoes, kayaks and pontoons.

1715 W. River Dr. W., Stevens Point
715-341-2490

UWSP INTRAMURALS & OUTDOOR RENTALS

Rents kayaks, canoes, SUPs, cross country skis, snow shoes & more.

2050 Fourth Ave., Stevens Point
715-346-4441 | UWSP.edu/centers/intramurals

REMEMBER!

↑	SHOES ON THE LEFT.	WHEELS ON THE RIGHT.	↑
	(Walkers and Runners)	(Bikes, Roller Blades, Roller Skis, etc.)	
	(Facing Traffic)	(With Traffic)	

TRAIL ROUTES Pages 6-20

- 1 Erickson Natural Area/Koziczkowski Park*
- 2 Green Circle Trail and Spurs*
- 3 George Mead Wildlife Area
- 4 Ice Age Trail
- 5 Iverson Park*
- 6 Jordan Park
- 7 Lake Emily County Park
- 8 Wolf Lake Park
- 9 Schmeeckle Reserve*
- 10 Standing Rocks Park
- 11 Tomorrow River State Trail
- *On inset map

STATE NATURAL AREAS Pages 21-23

- 12 Mead Conifer Bogs
- 13 Little Bear Hemlocks
- 14 Dewey Marsh
- 15 Upper Little Wolf
- 16 Bradley Creek & Flume Creek
- 17 New Hope Pines
- 18 Buena Vista Marsh
- 19 Pickerel Lake
- 20 Emmons Creek
- *On inset map

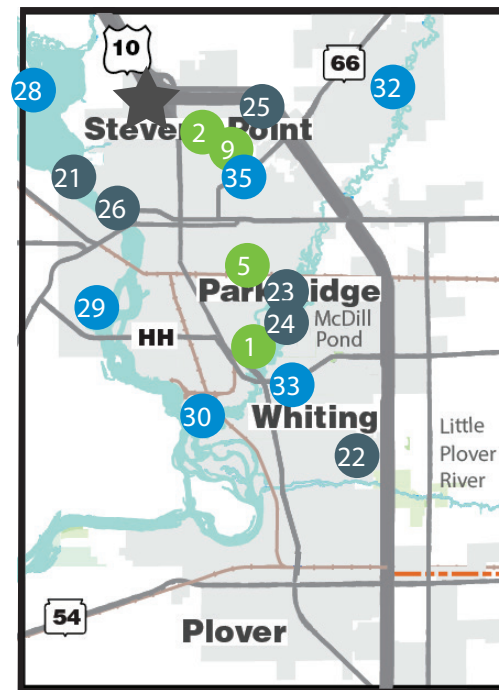
ROAD BIKING ROUTES Pages 24-26

- 21 Old Wausau Road*
- 22 Plover to Amherst*
- 23 Lake Emily Loop*
- 24 Stevens Point to Polonia*
- 25 Wetlands*
- 26 West Loop*
- 27 Sunset Lake Area
- *On inset map

PADDLING ROUTES Pages 27-34

- 28 Wisconsin River North*
- 29 McDonald Island*
- 30 Blue Heron*
- 31 Upper Plover River
- 32 Lower Plover River*
- 33 McDill Pond*
- 34 Tomorrow River
- 35 Lake Joanis*
- *On inset map

★ Stevens Point Area Convention & Visitors Bureau



- Multi-Use Trails
- Hiking
- Biking
- Parks

TOMORROW RIVER (FOR INTERMEDIATE PADDLERS)

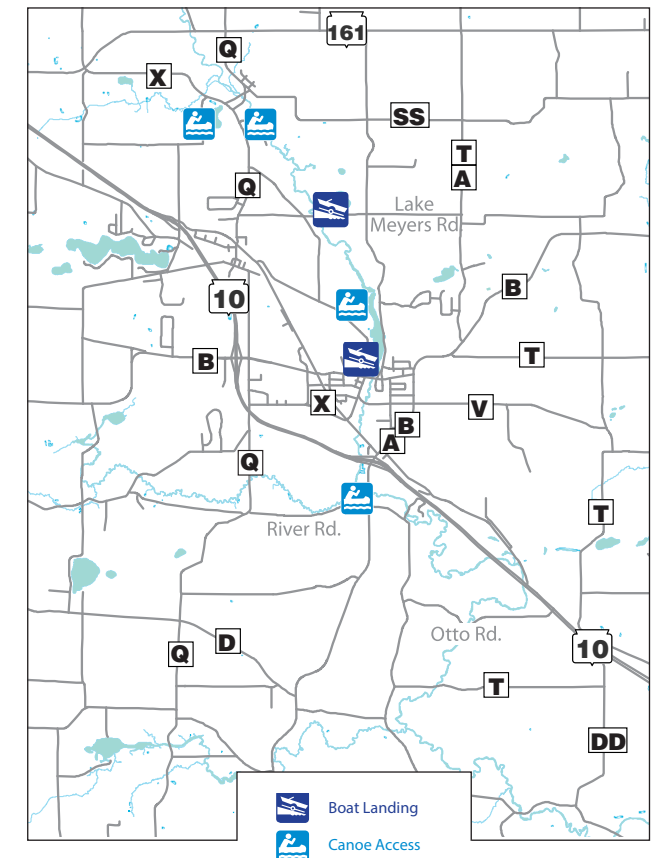
3190 County Rd. Q
Nelsonville, WI 54458

Begin your adventure in Nelsonville. Stop to view the historic Rising Star Mill, one of four historical museums maintained by the Portage County Historical Society. The mill is open for special events throughout the year. This segment meanders through woods and fields. Four miles downstream in the Village of Amherst, be sure to follow Portage signs to avoid dam. Once you reach Amherst, stop for a stroll and lunch in the downtown district, complete with shops, restaurants and an art gallery. Continue on the Tomorrow River, suggested take-outs are at Highway T or Highway DD. Please note: during high water, submerged logs and swirling water can cause problems. During low water, rocks and shallows will be present.

Many other waterways offer recreational opportunities throughout Portage County such as: Lake DuBay, Adams Lake, Collins Lake, Lake Emily, Jordan Pond, Sunset Lake, Lake Thomas, Wisconsin River flowages, The Little Wolf River, Spring Creek.



TOMORROW RIVER



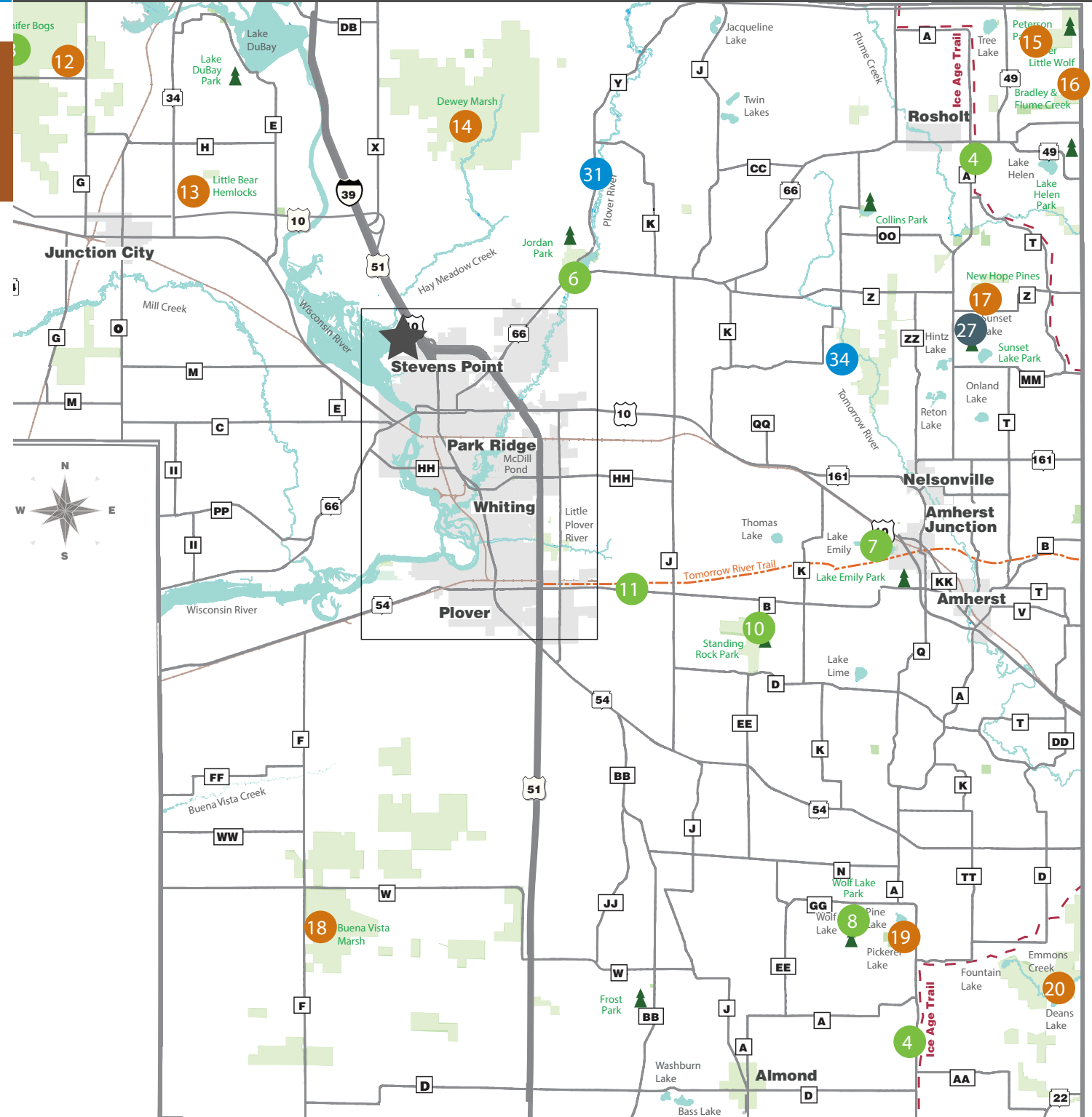
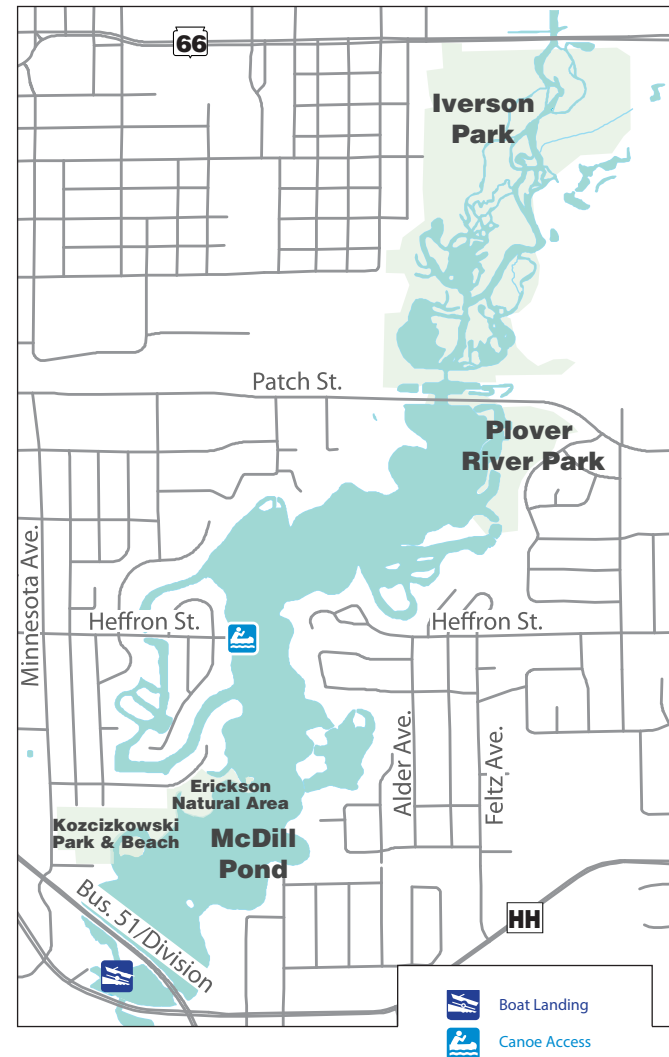
**MCDILL POND
(FOR BEGINNER PADDLERS)**

3499 Heffron St.
Stevens Point, WI 54481

MCDILL POND

Two boat landings are available; Business 51 adjacent to the bridge and the end of Heffron St. Put in points are also available at Kozcizkowski Park. Caution: stay away from the dam by the Business 51 landing, do not go near it. If going under the bridge, look for many cliff swallow nests on the bridge. Kozcizkowski Park has a swim beach and hiking trails, follow around the island next to the beach to observe the turtles.

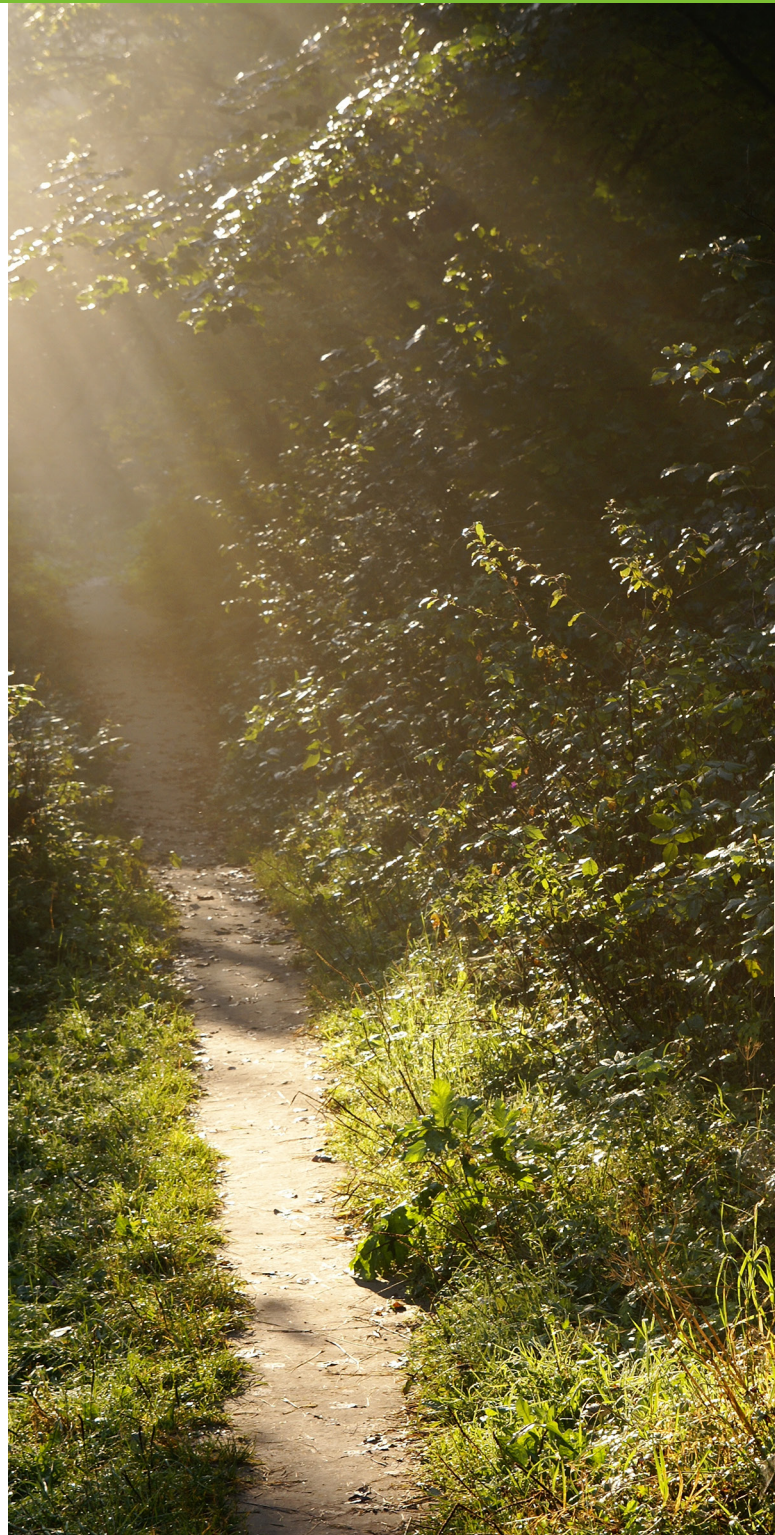
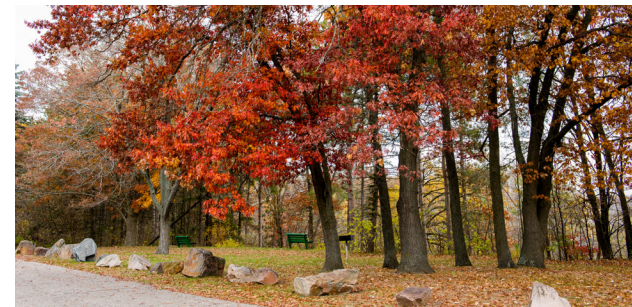
Adjacent to the park is the Godfrey and Maybelle Erickson Audubon Wildlife area with many bluebird nesting boxes. The power lines crossing McDill in the middle have Osprey nests on top; binoculars allow you to see nestlings in early spring. On the east shore of the power lines is a small opening to Spring Slough which contains the most aquatic plant diversity in the county and is home to a DNR weevil study. On the west shore of the power poles is Oriole Island. Both sides are good stops for wildlife observations. Further north on the west shore are the openings to the North and South Channel. The channels continue through the culvert going under the road, canoes or kayaks will fit through the culvert. On the North side of McDill as it bends around the curve, there are more small channels on the south side including a circle around a spooky island, and an old abandoned shack. On the northern most stretch of McDill before Patch St the water deepens in the middle to 16' due to a sand trap dredge, and on the sides are shallow flats used for spawning that are frequented by a variety of birds and have a variety of plant diversity. Allow 2-4 hours for this trip. McDill offers flat water paddling, but can become choppy on the main body during windy days.



Tucked along the shores of McDill Pond in Koziczkowski Park, is the 5.5 acre Godfrey & Maybelle Erickson Natural Area. The park, known for birding with more than 170 species documented, has a .5 mile trail. The trail, consisting of woodchips winding along the shore of McDill Pond, and through a variety of habitats, is part of the Green Circle Birding Trail. Parking is available on the north side of Koziczkowski Park, off of Minnesota Avenue or Della Street.

LOCATION

3433 Minnesota Ave.
Stevens Point, WI 54481



UPPER PLOVER RIVER (FOR INTERMEDIATE PADDLERS)

8500 Jordan Rd.
Stevens Point, WI 54482

Park one car at the Jordan Park east parking lot situated off Hwy Y. Travel north 5.8 miles on Hwy Y to Bentley Road, turn right on Bentley Road travel 1/4 mile, park and unload along Bentley Road where the road intersects with the Plover River on the right. During this nearly 8 mile, 3 hour quiet journey abundant wildlife may be revealed. This stretch of the river generally has a slow moving current, but be careful of the site of the former Christensen's dam and in the somewhat rocky stretch just downstream. Allow 3 1/2 hours to reach the boat landing at Jordan Park.

CAUTION: Do not go near the dam in Jordan Park.

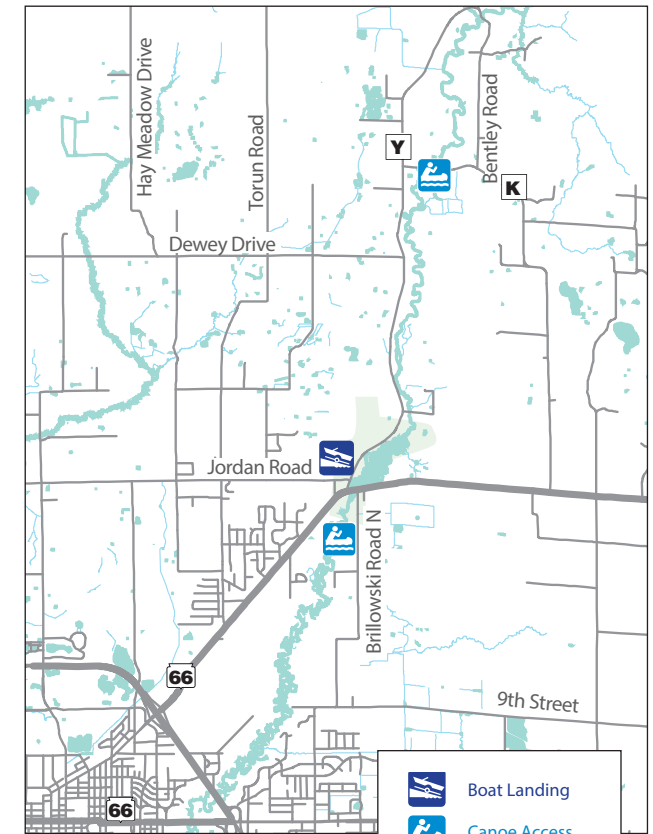
LOWER PLOVER RIVER (FOR BEGINNER & INTERMEDIATE PADDLERS)

5770 Hwy. 66
Stevens Point, WI 54482

Park one car in Iverson Park off Highway 66 in Stevens Point. Then travel Highway 66 east to Jordan Park. Begin this route at the canoe ramp on the south side of Hwy 66 in Jordan Park (handicap accessible dock is available). The route will meander through generally flat water, and is an excellent trip for bird watchers in June and July. Because of the wooded landscapes on either side of the river, it is an excellent way to view fall colors in the area. Once you have reached Iverson Park, enjoy a dip in the water near the swimming beach, or walk on a short segment on the Green Circle Trail that makes its way through the park.

INSIDER TIP: Want to grab a bite to eat? Try Hilltop Pub & Grill, just east of Iverson Park.

UPPER/LOWER PLOVER RIVER

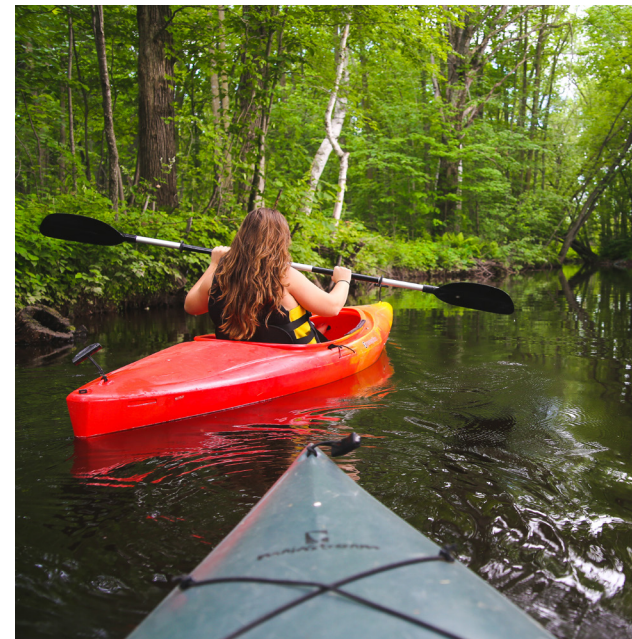


**BLUE HERON LOOP
(FOR INTERMEDIATE PADDLERS)**

3066 Blue Heron Ln.
Stevens Point, WI 5448

Blue Heron Island loop offers paddlers a 4, 4.2 and 3.25 mile option. To get to the Blue Heron Boat Landing, take Business 51 south to Hwy 66 west. Continue on Hwy 66 over the Wisconsin River/ Clark Street Bridge, turn left on West River Drive. Drive south along the river. Continue 4 miles. When the road turns to the right, towards the Wisconsin River Golf Course, continue straight to Blue Heron Lane. Follow this dirt road to boat landing and park your car. From the boat landing paddle across the River (east) to the Blue Heron Island. This private island offers magnificent views of wildlife and diverse forest types.

INSIDER TIP: If you are hungry or thirsty afterwards, Rusty's is just down the road a few miles past the boat landing.



BLUE HERON LOOP



The Green Circle offers 27 miles of scenic hiking and biking trail that loops through the Stevens Point area and connects with more than 45 miles of additional trails. It winds through forests and parks, over wetlands, and along rivers. The Schmeekle Reserve Visitor Center is the headquarters of the Green Circle, which offers free parking, restrooms, drinking fountains, and an information desk from 8 a.m. to 5 p.m. daily. This would serve as an ideal starting point for trail users who are unfamiliar with the Stevens Point Area. The main loop of the Green Circle is made up of 12 connecting trail segments. Our additional trail spurs connect to the Green Circle Trail.

UNIVERSITY TRAIL

LENGTH: 2.6 miles
SURFACE: Crushed granite trails, boardwalks and paved roads
ACTIVITIES: Hiking, jogging, biking, no pets (use alternate route along North Point Dr.)
PARKING: Schmeekle Reserve Visitor Center (west), Along Wilshire Dr. (east)

The University Trail spans from the Green Circle Trailhead off of Business 51 (west) to the Moses Creek parking lot off of Wilshire Drive (northeast). The west portion of the trail meanders through Schmeekle Reserve, a natural area owned by the University of Wisconsin-Stevens Point. Diverse habitats of forest, prairie, wetlands, and oak savanna provide ample wildlife viewing opportunities. The east portion follows Wilshire Drive to the north.

MOSES CREEK TRAIL

LENGTH: 2.3 miles
SURFACE: Crushed granite, boardwalks
ACTIVITIES: Hiking, jogging, biking, pets
PARKING: Wilshire Drive parking lot (west) or Hwy. 66 Plover River Trail parking lot (east)

Spans from parking area along Wilshire Drive (west) to Highway 66 crossing (east). The Moses Creek Trail features the longest boardwalk on the Green Circle (nearly 1/2 mile). The trail meanders through wet woodlands and over pristine sedge meadows, providing ample wildlife watching opportunities.

PLOVER RIVER TRAIL

LENGTH: 3.6 miles
SURFACE: Crushed granite trail
ACTIVITIES: Hiking, jogging, biking, pets, cross-country skiing
PARKING: Lot off of Hwy. 66 (north), end of Hofmeister Dr. (south)

The scenic Plover River Trail spans from the Highway 66 crossing (north) to Hofmeister Drive (south). This wooded trail, one of the longest segments of the Green Circle, follows the meandering Plover River on its journey to the Wisconsin River. A portion of the trail runs through Izaak Walton League (Bill Cook Chapter) land. The diverse woodlands, towering trees, flowing water, and ample wildlife viewing make this trail a favorite among users.



IVERSON PARK TRAIL

LENGTH: 2.7 miles
SURFACE: Crushed granite (through park) and paved roads
ACTIVITIES: Hiking, jogging, biking, pets
PARKING: End of Hofmeister Dr. (north), Iverson Park (middle), Patch St. (south)

The Iverson Park Trail travels through one of the oldest and largest city parks in Stevens Point. It spans from Hofmeister Drive (north), travels over I-39, follows quiet residential roads, crosses over Hwy. 66, meanders through Iverson Park, ducks under a train bridge, and ends on Patch Street (south).

HEARTLAND TRAIL SPUR

LENGTH:
2.8 miles

SURFACE:
Asphalt paved trail

ACTIVITIES:
Hiking, jogging, biking, pets

The Heartland Trail Spur is a paved path that parallels Patch Street. Green Circle users can access the trail at the intersection of the Iverson Park and McDill Trail segments. The path travels from Michigan Avenue at its west end to the Portage County Business Park on the east side of Interstate 39 with a safe underpass trail beneath the highway.

MCDILL TRAIL

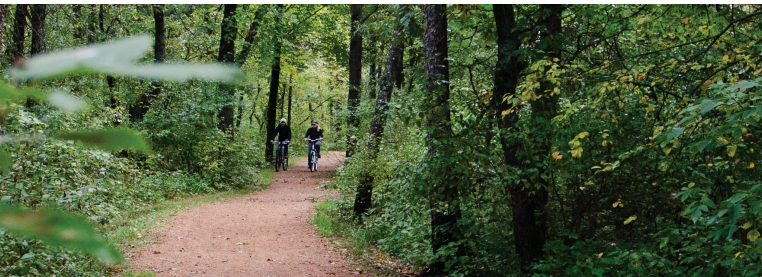
LENGTH:
1.4 miles

SURFACE:
Crushed granite and paved roads

ACTIVITIES:
Hiking, jogging, biking, pets

PARKING:
Patch St. (north), Whiting Park (south)

Spans from the parking area along Wilshire Drive (west) to Highway 66 crossing (east). The Moses Creek Trail features the longest boardwalk on the Green Circle (nearly 1/2 mile). The trail meanders through wet woodlands and over pristine sedge meadows, providing ample wildlife watching opportunities.



HOOVER ROAD TRAIL SPUR

LENGTH:
4.9 miles

SURFACE:
Asphalt paved trail

ACTIVITIES:
Hiking, jogging, biking. Pets allowed only on the trail spur, not in Plover parks.

PARKING:
Little Plover River Park (middle), Worzella Pines and Lake Pacawa Parks

The Hoover Road Trail Spur is a popular spur that connects Stevens Point (north) with the Village of Plover (south). The trail spur is accessed via a short crushed granite connector path from the Mainland Meadows Trail and winds through the Whiting wellfield woodlands. The majority of the trail parallels Hoover Road. It is paved for easy biking and jogging.

WHITING CROSSING TRAIL

LENGTH:
2.2 miles

SURFACE:
Crushed granite, trail and paved roads

ACTIVITIES:
Hiking, jogging, biking, pets

PARKING:
Whiting Park (northwest)

The scenic Whiting Crossing Trail is accessed at the intersection of the McDill Trail on the east, and the Paper Mill Trail on the west.

The eastern portion of the trail winds through the scenic Mainland Meadows, part of the Village of Whiting well field. You can take a short break from the Green Circle here for loop trails. The majority of the trail follows roads through quiet neighborhoods. The western portion also offers access to Upper Whiting Park, offering views of the Whiting dam, the wide Plover River, an abundance of year-round waterfowl, and Indian Mounds.

MCDONALD ISLAND (FOR INTERMEDIATE PADDLERS)

2148 W. River Dr.
Stevens Point, WI 54481



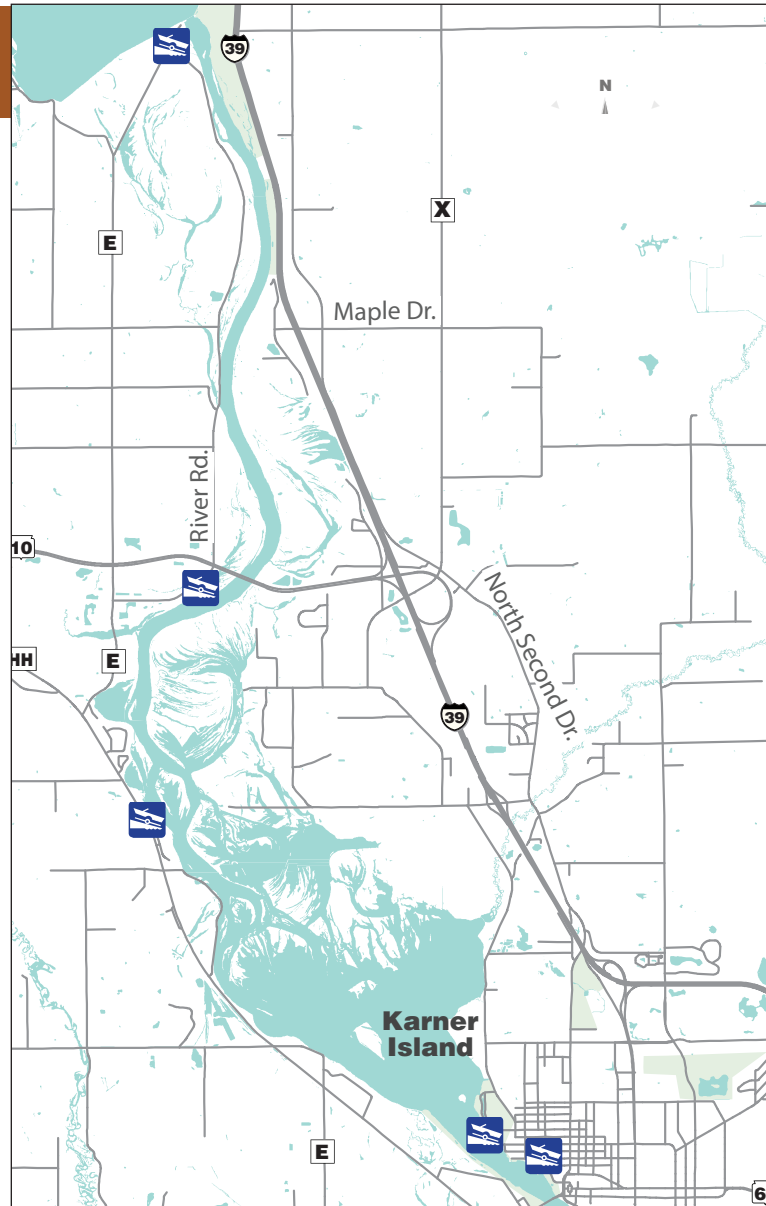
McDonald Island is a great 1-2 hour paddling loop. To access the Wisconsin River/McDonald Island take Business 51 South to Hwy. 66 West. Continue on Hwy 66 through downtown Stevens Point and go over the Wisconsin River. Take a left on West River Drive after you cross the Clark Street bridge. Travel 1 mile until you see a boat landing on the left. Park your car in the driveway area on the left; unload your boat, kayak or canoe and paddle across the Wisconsin River to McDonald Island. The 34 acre Island features a wide diversity of wildlife species due to its proximity to the mainland and the high diversity of the forest types. Whitetail deer and gray squirrels are commonly seen. A wide variety of songbirds can be heard and seen feeding and nesting throughout the oak and maple forests. The Island is a haven for wildlife within the city limits of Stevens Point. Consolidated Water, Power and Paper Company sold the Island to the McDonald family in the early 1900's. The family farmed a 20 acre section of the Island from the 1930's through the mid-1950's. At that time, crossing the river was accomplished on a small rocky bar from the west bank of the river to the north end of the Island. The water level is much higher today, so the Island is only accessible by boat. In 1969 the McDonald Family donated the property to the University of Wisconsin-Stevens Point College of Natural Resource program.

MCDONALD ISLAND



WISCONSIN RIVER NORTH HIGHLIGHTS

- A** Need a break? Maple Island Beach is a popular stop for boaters looking to play in the water or relax with friends.
- B** Bukolt Park spans 56 acres in the city limits of Stevens Point and offers plenty of picnic areas, playground equipment, swimming beach, boat landing and restrooms. If you plan it right you can take in an American Legion Baseball game. In 1936 this park was named after John J Bukolt, an inventor
- C** Mead Park is situated on 16 acres along the shore of the Wisconsin River. Situated within the park is a K.A.S.H. Playground, a 9-hole disc golf course, swimming beach, picnic areas, restrooms, lit tennis and volleyball courts and horseshow pits. The park was named after George W. Mead, who worked for Consolidated Water Power and Paper Company who deeded the land to the city in 1946.
- D** Pfiffner Pioneer Park covers 10 acres in downtown Stevens Point. The park offers a boat landing, picnic areas, restrooms and playground. In the summer you will find regular entertainment on the band shell stage. At the southernmost tip of the park, you'll encounter the Riverfront Arts Center. A bit of history: In the park you'll find the George Stevens Rock near the Riverfront Arts Center. This rock recognizes George Stevens who came to the area in 1839, when he bought a log shack as a place to store his supplies for operations elsewhere. People going downstream could see his shack on a point sticking out in the river. Our town eventually became named Stevens Point, named after a person who simply stored his belongings in a log shack and wasn't here very long.
- E** Downtown Stevens Point is just one block east of Pfiffner Pioneer Park and offers a variety of specialty shops, dining and attractions. The downtown area also has several murals that pay homage to the rich history of Stevens Point.



INSIDER TIP: The Wisconsin River is known as the "hardest working river in the nation" because of the hydropower that is used in papermills and in the hydroelectric plants. Visitors to the Wisconsin River need to be aware of both large and small low head dams. Stevens Point has a Low Head dam on the Wisconsin River below Hwy HH. Very dangerous to paddlers. Paddlers should also beware of motorboat traffic on all sections of the Wisconsin River.

PAPER MILL TRAIL

LENGTH: 1.7 miles
SURFACE: Crushed granite and sidewalks
ACTIVITIES: Hiking, jogging, biking, pets
PARKING: Whiting Park/Cedar St. (east), corner of Sherman/Whiting Ave. (west)

The Paper Mill Trail spans from the edge of Upper Whiting Park (west) at the Plover River bridge to Sherman Ave. The trail meanders through Village of Whiting and paper mill woodlands following the Plover River flowage to its confluence with the Wisconsin River.

RIVER PINES TRAIL

LENGTH: 3.6 miles
SURFACE: Crushed granite trail (along river), paved roads, sidewalks
ACTIVITIES: Hiking, jogging, biking, pets
PARKING: Corner of Sherman/Whiting Ave. (south), downtown (north)

The River Pines Trail extends from Sherman River in the south to the Highway 66 bridge over the Wisconsin River in the north. The majority of the trail meanders through natural forest as it follows the Wisconsin River shoreline. One of the most scenic portions of the trail, this section offers views of rocky outcroppings, islands, large white pine and oak trees, and incredible sunsets.



WESTSIDE LOOP TRAIL

LENGTH: 2.4 miles
SURFACE: Crushed granite trails and sidewalks
ACTIVITIES: Hiking, jogging, biking, pets
PARKING: Corner of Sherman/Whiting Ave. (south), downtown (north)

The Westside Loop is an alternative route that follows the west side of the Wisconsin River. The loop spans from the Highway 66 river crossing in the north (Riverfront Trail) to the County HH river crossing in the south (River Pines Trail). The northern portion of the trail offers excellent views of historic downtown Stevens Point and the Verso Paper Mill and dam.

RIVERFRONT TRAIL

LENGTH: 1.2 miles
SURFACE: Asphalt paved trail
ACTIVITIES: Hiking, jogging, biking, pets
PARKING: Bukolt Park (north), downtown (south)

The popular Riverfront Trail spans from Bukolt Park in the north to the Highway 66 bridge in the south. It travels along the shore of the Wisconsin River through Bukolt and Pfiffner Pioneer Parks, with easy access to downtown Stevens Point.

STAGECOACH TRAIL

LENGTH: 2.2 miles
SURFACE: Paved roads
ACTIVITIES: Hiking, jogging, biking, pets
PARKING: Bukolt Park (west), Zenoff Park (east)

The Stagecoach Trail spans from Bukolt Park (southwest) to Zenoff Park (east) along quiet neighborhood roadways. It provides stunning views of the quiet Wisconsin River north of Stevens Point. Old Wausau Road has extended shoulders for biking.

SCULPTURE PARK TRAIL SPUR

LENGTH:
0.5 miles

SURFACE:
Crushed granite and woodchips

ACTIVITIES:
Hiking, jogging, biking, pets

PARKING:
Zenoff Park (north), Along North Second St. (west)

Explore beautiful sculptural works along the scenic .5 mile trail. Leisurely stroll through towering pines to discover a unique connection between nature and art. Sitting on 20 acres and connected to the Brickyard Trail, the Stevens Point Sculpture Park features artwork from local, regional, and national artists.

BRICKYARD TRAIL

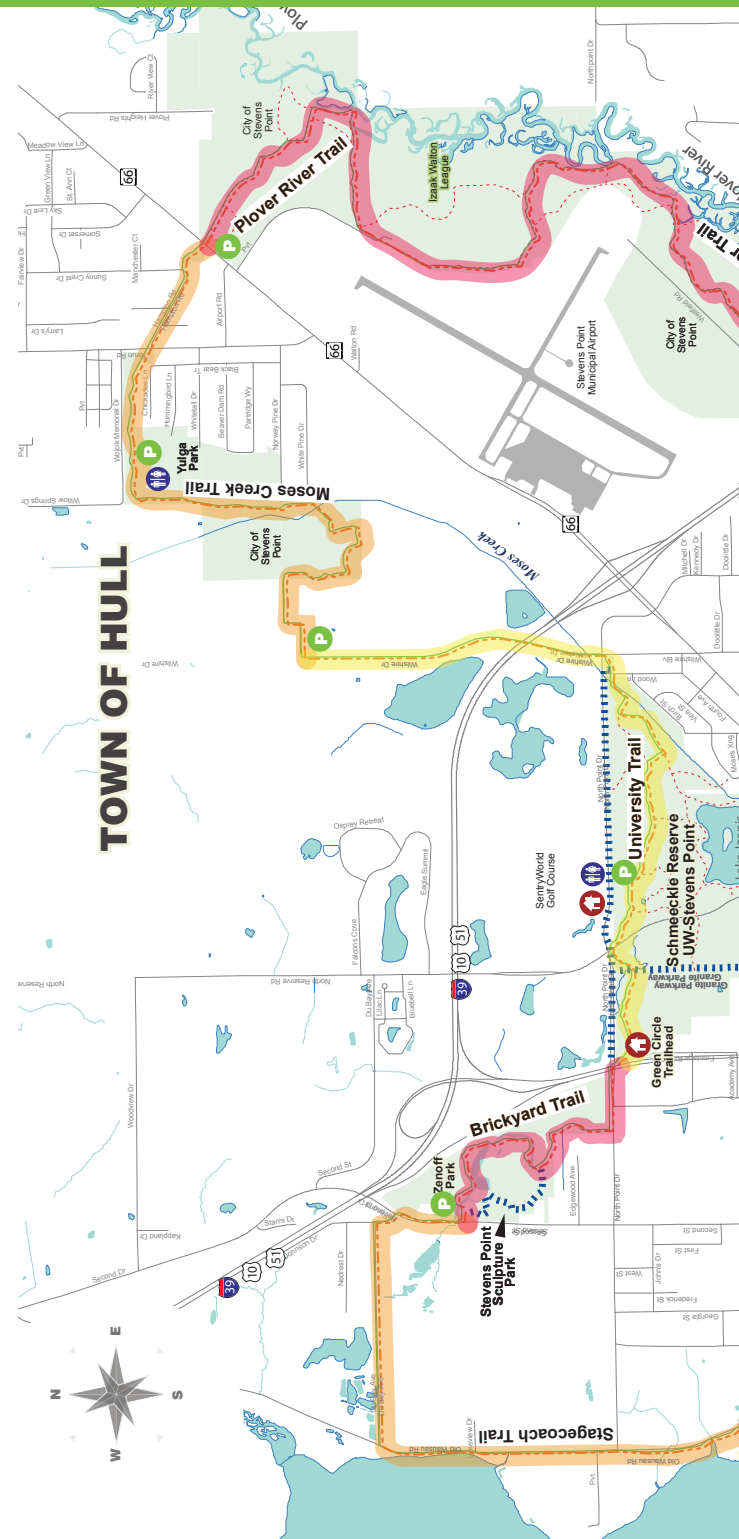
LENGTH:
1.2 miles

SURFACE:
Crushed granite, some sidewalk

ACTIVITIES:
Hiking, jogging, biking, pets

PARKING:
Zenoff Park (west), Schmeckle Reserve Visitor Center (east)

The Brickyard Trail spans from Zenoff Park (west) to the Green Circle Trailhead on the edge of Schmeckle Reserve (east). It travels through a forested area, following a small stream past meadows. Several active ponds along the path provide habitat for frogs, turtles, and herons. The Brickyard Trail provides access to the Stevens Point Sculpture Park.



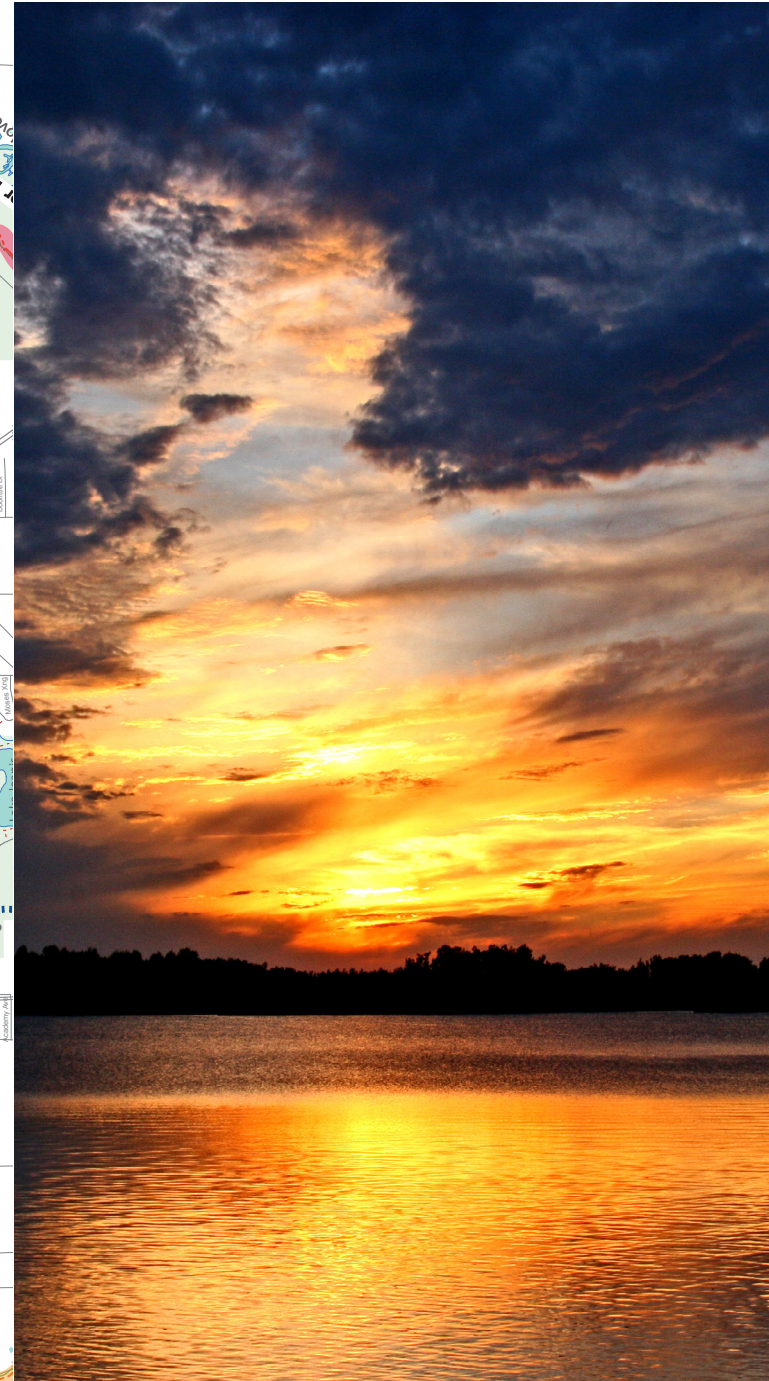
WISCONSIN RIVER NORTH

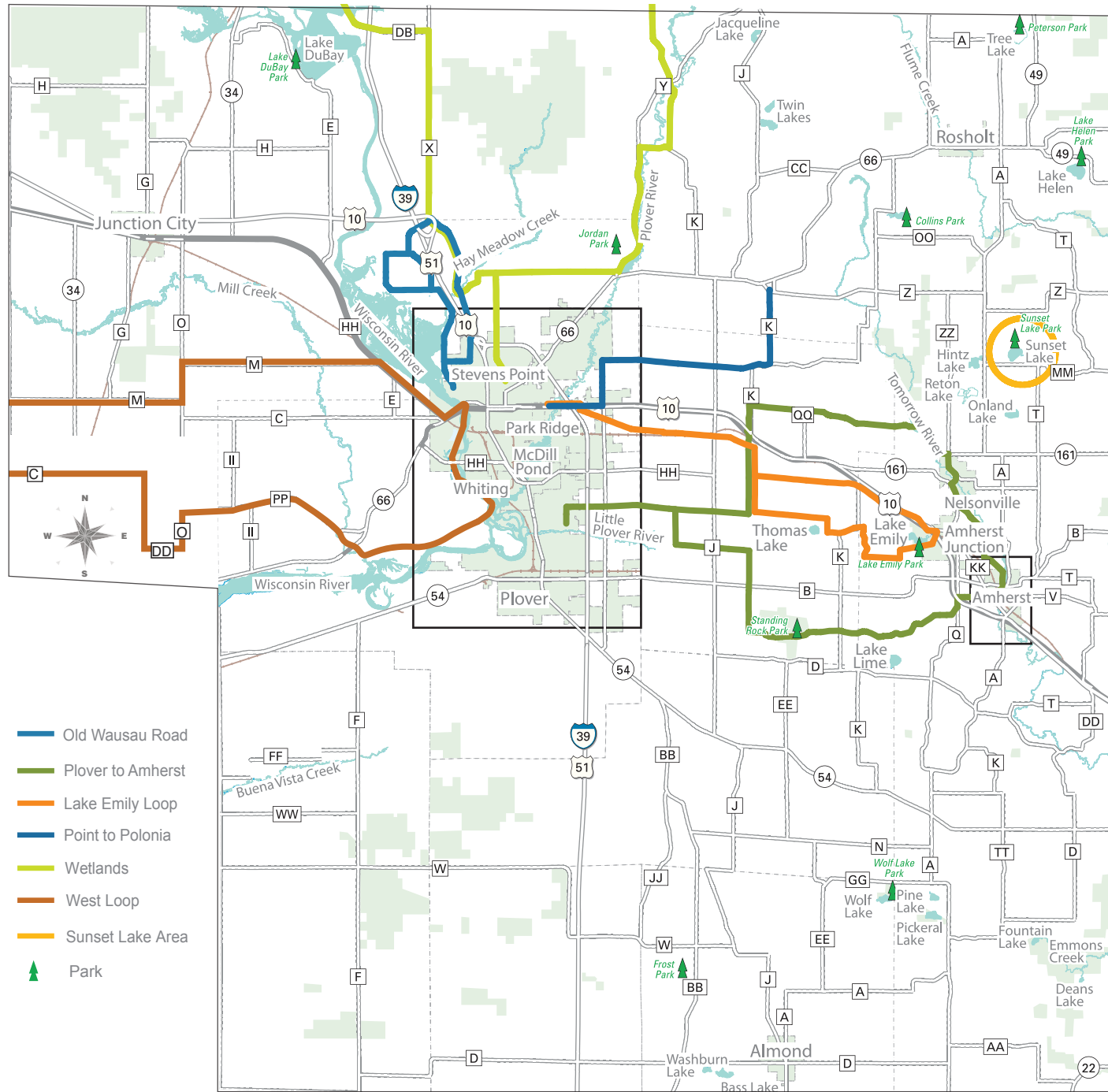
WISCONSIN RIVER NORTH (FOR INTERMEDIATE PADDLERS)

2148 W. River Dr.
Stevens Point, WI 54481

Take Highway HH West out of Stevens Point (approximately 4 miles) and you will find a boat landing on the right side of the road (A). Put in here and head back towards Stevens Point (E). As you proceed downstream, the islands to your left are surrounded by channels. The adventurous canoeist may wish to poke around the islands, spend some time fishing, bird watching or animal viewing. All channels headed south open into the Stevens Point Flowage and back to the main channel. In the Flowage, go under the power lines and take out at the boat landing near the swimming beach in Bukolt Park (B).

Most of the paddling routes in Portage County can be accomplished with two cars. Local outfitters can provide transportation for trips using rented equipment.

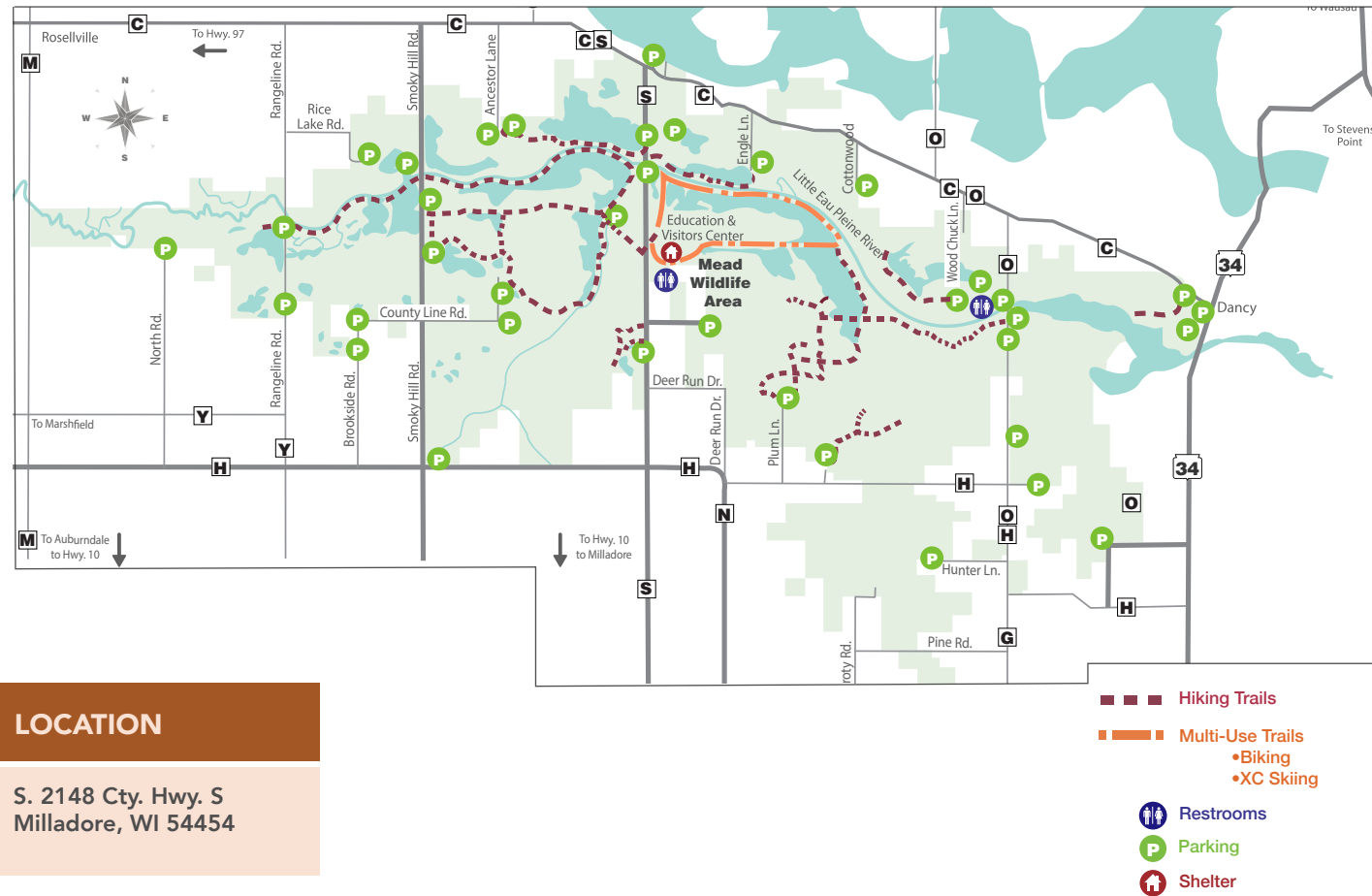




- Old Wausau Road
- Plover to Amherst
- Lake Emily Loop
- Point to Polonia
- Wetlands
- West Loop
- Sunset Lake Area
- ▲ Park



- Hiking Trails
- Multi-Use Trails
- + Hiking
- + Biking
- ♿ Restrooms
- P Parking
- T Shelter
- ||||| Trail Spurs



LOCATION

S. 2148 Cty. Hwy. S
Milladore, WI 54454

The George W. Mead Wildlife Area, a public property managed by the Wisconsin Department of Natural Resources, offers over 80 miles of trails that explore portions of the expansive 33,000 acres. The 7-mile Berkahn Rookery Bicycle Loop is open May 15 to September 1. Observe nesting great blue herons and cormorants in the rookery. Three walking trails are accessible from the Stanton W. Mead Education and Visitor Center. The Audubon Prairie Nature Trail is a tranquil .5 mile walking trail through grassland habitat and native prairies. The new Ephemeral Trail and Boardwalk is a nice 2 mile hike along native prairies, past Dragonfly Pond and through a forest habitat. The easiest trail is the Turkey Foot Trail at .25 mile; it meanders

over a wooden bridge and through a tall grass prairie habitat. The Smokey Hill Watchable Wildlife and Historic Site located just off of Smokey Hill Road is an excellent place to explore the wildlife area. Walking trails in this location run along Rice Lake and the Little Eau Pleine River and includes the Rice Lake Refuge.

Travel west from Stevens Point on Highway 10 West. Take Highway S North to enter the wildlife area. The Stanton W. Mead Education & Visitors Center is located at S2148 Cty Hwy S, Milladore, WI 54454.

POINT TO POLONIA

4201 US Hwy. 10
Stevens Point, WI 54481

Begin in the south parking lot of Iverson Park in Stevens Point, at the Hillcrest Drive entrance. Follow the Green Circle Trail/Hillcrest Drive up the hill out of the park. Take an immediate right at the on Sunrise Avenue, continue .2 miles on Sunrise Avenue, turn right on Highway 66 east, continue 1.7 miles on Hwy 66 which becomes Hwy 10 east, turn left on Brilowski Road/County Hwy R, continue northeast 8.1 miles on Brilowski Road which turns Rainbow Drive, which turns into 9th Street which turns into County Hwy K. Reverse your trip to Iverson Park and you'll have traveled approximately 20 miles through relatively flat but interesting farmland. Beginner and intermediate riders will love the challenge.

INSIDER TIP: Polonia Café, Polish Heritage Trail

WETLANDS

2419 N. Point Dr.
Stevens Point, WI 54481

Begin at the Schmeckle Reserve Visitor Center. Start your adventure by taking a left out of the parking lot on North Point Drive, continue .3 miles on North Point Drive, turn right on Michigan Avenue which turns into Reserve Street, continue 2.5 miles to Jordan Road, turn right on Jordan Road, continue 3.4 miles to County Hwy Y, turn left on County Hwy Y, continue 3.7 miles on County Hwy Y, turn right on County Hwy K, continue .8 miles on County Hwy K, turn left on Bentley Road, continue 6.2 miles on Bentley Road which becomes Birch Road, turn left on County Hwy C, continue 9.7 miles on County Hwy C, take a left on County Hwy DB, continue 3.7 miles on DB, turn right on Sunset Drive, continue 6.9 miles on Sunset which turns into Second Drive, turn left on Evergreen Drive, continue 1.3 miles on Evergreen Drive, turn right on Reserve Drive, continue 3.3 miles on Reserve Drive which turns into Michigan Avenue, turn left on North Point Drive back to the Schmeckle Reserve Visitor Center. Approximately 41.3 miles.

INSIDER TIP: Mullins Cheese, Lake DuBay, Tiki Beach

WEST LOOP

1100 Crosby Ave.
Stevens Point, WI 54481

Begin at Piffner Pioneer Park in downtown Stevens Point. Park in the City parking lot at the corner of Crosby Avenue and Water Street. From the parking lot, begin your journey by heading west/turn right on Hwy 66 West, continue .4 miles on Hwy 66 cross the Wisconsin River bridge, turn left on West River Drive; continue 7.4 miles on West River Drive which turns into Mill Creek Drive; continue 1 mile on Mill Creek Drive, cross over the highway staying on Mill Creek Drive, turn left on County Hwy PP, continue 4.7 miles on County Hwy PP, turn left on O, continue 1 mile on County Hwy O, turn right on Co Hwy DD, continue 1 mile on County Hwy DD, turn right on 2nd Avenue, continue 2 miles on 2nd Avenue, turn left on Hwy C, continue 3.8 miles on County Hwy C, turn right on Hwy S/Bella Rd, continue 2.1 miles on County Hwy S, turn right on M, continue 4.9 miles on County Hwy M to Hwy O, turn left to follow O/M, turn right to follow M. Continue 5.5 miles on County Hwy M to Hwy HH (Old Hwy 10), take a right on Hwy HH for 2.5 miles and continue onto W Clark St. for 0.6 miles. Turn left onto Water St. for 0.1 miles and then take a quick left onto Crosby Ave. and you will be back to your parking spot in Stevens Point. For intermediate to advanced riders. Approximately 43.8 miles.

INSIDER TIP: Rusty's Backwater Saloon, Rudolph Grotto and Dairy State Cheese

SUNSET LAKE AND AREA

1092 Sunset Lake Rd.
Amherst Junction, WI 54407

Begin in the parking lot of Sunset Lake County Park. The country roads surrounding Sunset Park are lightly traveled and offer a wide variety of terrain. Explore the gentle hills and scenic roadside, and circle back to your starting point.

INSIDER TIP: After your ride is done take a dip in the crystal clear, glacier formed lake. Sunset Lake is also a great place for a picnic.

GREAT BIKE RIDES OF PORTAGE COUNTY

OLD WAUSAU ROAD

100 Bukolt Ave.
Stevens Point, WI 54481

Begin in the parking lot of Bukolt Park in Stevens Point. Ride north through the park, turn left (north) on Old Wausau Road and continue 2.5 miles on Old Wausau Road, turn left on Casimir Road, continue 2.4 miles on Casimir, turn right on Granite Ridge, continue .6 miles on Granite Ridge to Sawmill Road/County Road X. At this point you can choose to continue 4.7 miles on Granite Ridge to your starting point at Bukolt Park via Old Wausau Road. For a longer loop, turn left on Sawmill Road/County Road X, continue 1.3 miles on Sawmill/County Hwy X, turn right on Second Drive, continue 4.4 miles on Second Drive, turn right on North Point Drive, continue .7 miles and turn left on Old Wausau Road, continue .8 miles on Old Wausau Road until you reach the entrance of Bukolt Park. Relatively rolling gentle hills make this a very scenic ride. Longer Loop 12.7 miles. Short Loop 10.2 miles.

INSIDER TIP: Stevens Point Sculpture Park

PLOVER TO AMHERST

Little Plover River Biking Route, 1501 Hoover Ave.
Plover, 54467

Begin at Little Plover River Park. Follow the path north along Hoover .4 miles to Porter Road. Turn right on Porter Road/5th Street, continue 3 miles on Porter Road/5th Street, turn right on Bluff Road, follow Bluff 1 mile, turn left on 4th Street, continue 2 miles on 4th Street, turn right on Custer Road, continue 2.2 miles south on Custer Road, turn left on Standing Rocks Road, continue 6 miles on Standing Rocks Road which becomes Fountain Grove Road, take a left on County Road Q, continue 1.1 miles on County Road Q, turn right on Packer Avenue, continue 1.4 miles on Packer Avenue, cross County Road KK and you will be on Main Street in the Village of Amherst, continue 1.5 miles on Main Street which becomes School Street, turn right on Alm Road, continue 1.7 miles on Alm Road, turn right on County Road Q, continue 1.6 miles on County Road Q through the Village of Nelsonville, turn left on State

PLOVER TO AMHERST CONT.

Little Plover River Biking Route, 1501 Hoover Ave.
Plover, 54467

Hwy 161, continue .3 miles on State Hwy 161, turn right on Rolling Hills Road, continue 5.7 miles on Rolling Hills Road, take a left on County Road K continue 3 miles on County Road K passing through the Village of Custer where County Road K becomes Custer Road, turn right on 5th Street, continue 5 miles on 5th Street which turns into Porter Road, turn left on Hoover, continue .4 miles on Hoover Avenue back to Little Plover River Park.

INSIDER TIP: Clancy's in Custer, Rising Star Mill in

LAKE EMILY LOOP

4201 US Hwy. 10
Stevens Point, WI 54481

Begin in the south parking lot of Iverson Park in Stevens Point, at the Hillcrest Drive entrance. Follow the Green Circle Trail/Hillcrest Drive up the hill out of the park. Take an immediate right at the on Sunrise Avenue, continue .2 miles on Sunrise Avenue, turn right on Highway 66 east, continue 1.1 miles on Hwy 66, turn right on Old Hwy 18, continue 5.2 miles on Old Hwy 18, turn right on Custer Road, continue 1.8 miles on Custer Road, turn left on 5th Street, continue 2 miles on 5th Street, turn right on Smokey Road, continue .4 miles on Smokey Road, turn left on Lake Thomas Road, Lake Thomas Road becomes County Hwy K, continue 1 mile on Lake Thomas Road/Hwy K east, turn right on Town Line Road, continue .9 miles on Town Line Road, turn left on Ward Road, continue 1 mile on Ward Road, turn left on Lake Emily Road, continue 1.2 miles on Lake Emily Road, turn left on Lake Road, continue .3 miles on Lake Road, turn left on Old Hwy 18, continue 5.5 miles on Old Hwy 18 which becomes 6th Street, turn right on Custer Road, continue .8 miles on Custer Road, turn left on Old Hwy 18, continue 5.2 miles on Old Hwy 18, turn left on Hwy 10 east, continue .8 miles back to Iverson Park.

INSIDER TIP: Lake Emily County Park, Tomorrow

ICE AGE TRAIL

Eastern Portage County is known for its rolling hills, remnants from the glaciers in the area. Relive the past by biking or hiking the trail once shaped by glaciers on the Ice Age Trail. If the conditions are right, try snowshoeing the Ice Age Trail. Portions of this 1,000 mile footpath travel through eastern Portage County, linking history, cultures and geological features.

LITTLE WOLF RIVER FISHERY AREA SEGMENT (NEW HOPE-IOLA)

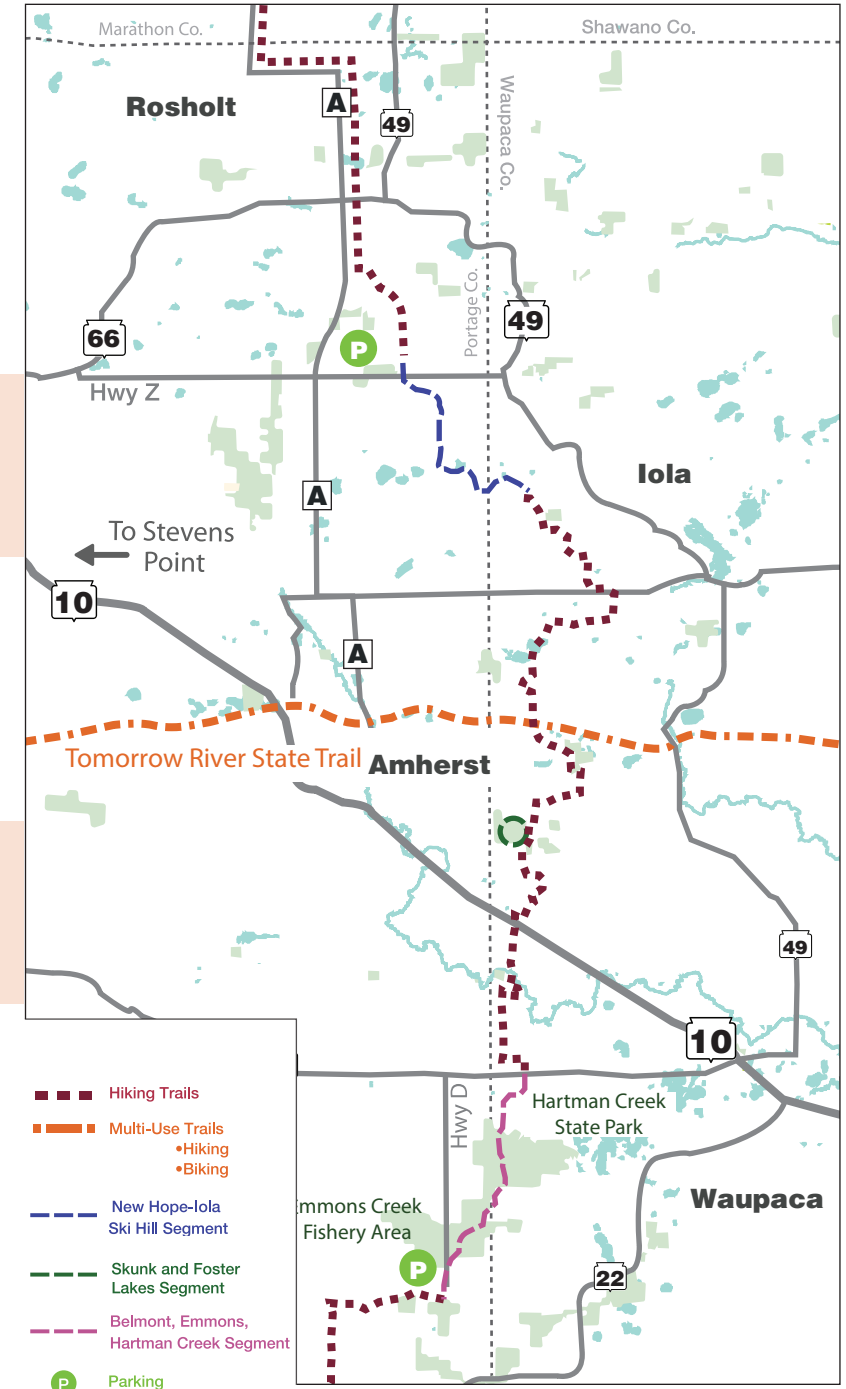
10651 County Road Z
Amherst Junction, WI 54407

To access this 5 mile segment, parking is available off of Highway Z, just east of Sunset Lake Road. From Stevens Point, take Highway 66 East, to County Road Z, parking will be on the left and right.

BELMONT, EMMONS HARTMAN CREEK SEGMENT

9588 Stratton Lake Rd.
Waupaca, WI 54981

Begin near the Emmons Creek State Fishery, located in southeastern Portage County. Parking is available near Stratton Lake Road in the Fishery. From Stevens Point, take I-39 South to Highway 54 West. Then south on County D, which becomes Stratton Lake Road, parking will be on the right.



IVERSON PARK

The Iverson Park Trail, a segment of the Green Circle Trail, is a 2.7 mile trail that travels through one of the oldest and largest parks in Stevens Point. The trail, consisting of crushed granite in the park with some paved roads, winds through quiet neighborhoods and along the Plover River. On the bank of the Highway 66 entrance, notice the words "City of Wonderful Water", near the public swimming beach. Iverson Park offers paddling along the picturesque Plover River.

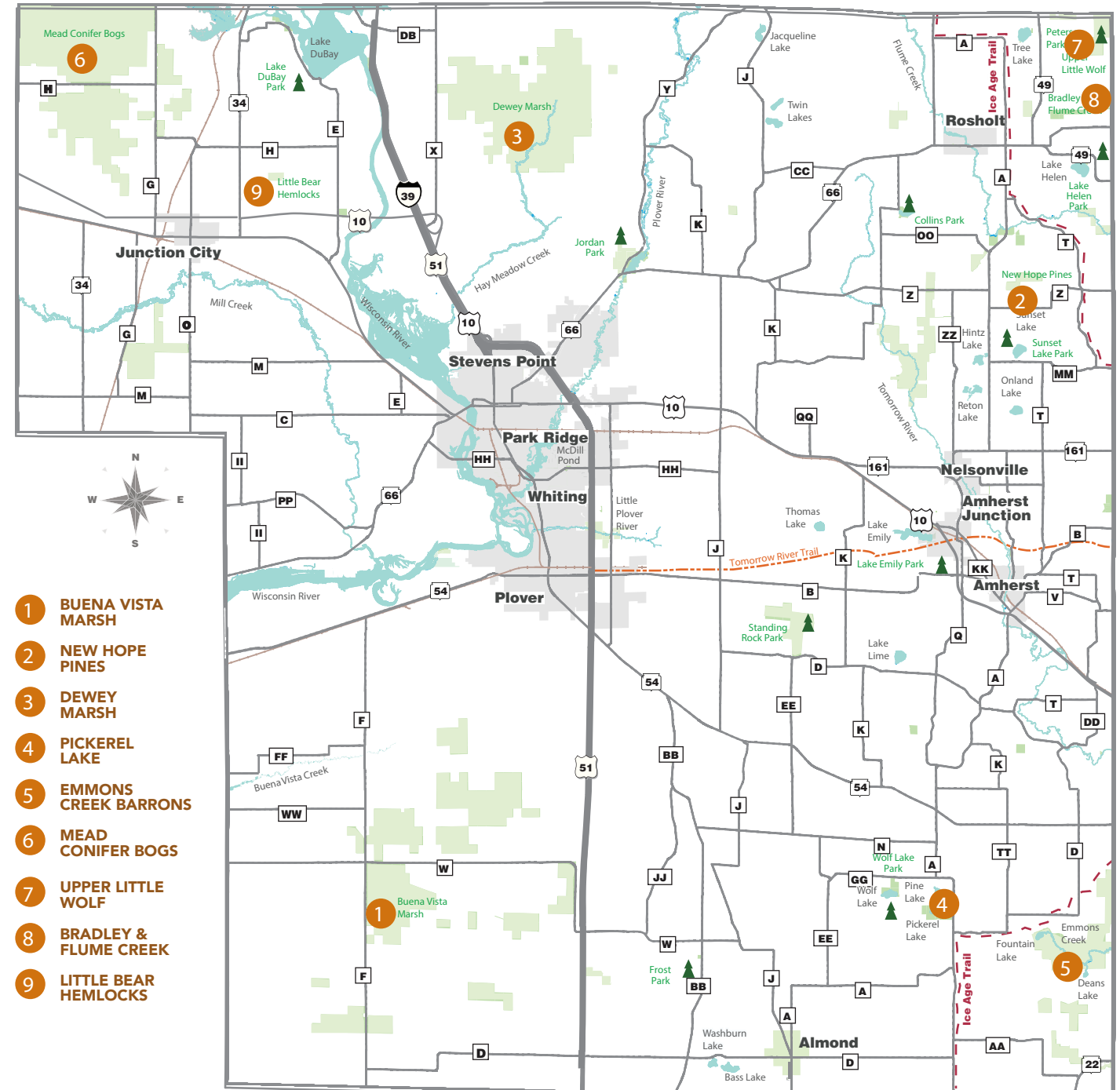
While part of the trails that wind through Iverson are part of the Green Circle, there are additional trails to explore within the park. Iverson is one of the city's largest parks, and it is home plenty of winter activities from sledding, tobogganing, ice-skating, skiing and snowshoeing, when conditions exist.



LOCATION

4601 WI-66
Stevens Point, WI 54481

STATE NATURAL AREAS IN PORTAGE COUNTY



STATE NATURAL AREAS IN PORTAGE COUNTY

MEAD CONIFER BOGS

2158 Cty. Hwy. S
Junction City, WI 54443

Mead Conifer Bogs are extensive areas containing northern wet forest dominated by black spruce that is gradually replaced by larger tamaracks. The groundcover is a firm carpet of sphagnum moss dominated by leather-leaf and cotton-grass. Poison sumac is present.

From the junction of Highway HH West and S in Milladore, go north on S 6.2 miles to the Wildlife Management Area Headquarters. Get a map and directions to the sites. Three parking areas provide access.

UPPER LITTLE WOLF

10480 Wigwam Rd.
Rosholt, WI 54473

Upper Little Wolf features a cold-water stream surrounded by a northern mesic forest comprised of hemlock hardwoods. Within this area, the Little Wolf River is very scenic with gravel and rubble as the bottom materials. Scattered vegetation along the stream allows for good fishing.

From Rosholt, go east on Highway 66 1.8 miles, then north on Highway 49 3.6 miles, then east on Wigwam Road .3 miles to a parking area north of the road.



BRADLEY CREEK SWAMP CONIFERS

3803 Hill Rd.
Rosholt, WI 54407

Bradley Creek Swamp Conifers features a spring-fed trout stream and a tributary to the Little Wolf River. A dense canopy lines and shades an understory of herbs and forbs. The creek is considered a Class I trout stream for its entire 6 mile length and contains a bottom of silt-covered sand, gravel, and rubble.

From Rosholt, go south on Highway 49 2.3 miles, then northeast on County NN 1.75 miles, then north on Hill Road .65 miles. Park and walk northeast to the creek.

FLUME CREEK CEDARS

3300 Linden Rd.
Amherst Junction, WI 54407

Flume Creek Cedars features a hard-water trout stream with a moderate flow and high scenic value. The sand and rubble-bottom stream flows through a large, dense white cedar and balsam fir swamp. The creek originates in Marathon County and flows through the northeastern corner of Portage County and into the Little Wolf River.

Go south on Highway 49 2.5 miles, then south on Lakeview Road 1.3 miles, then south on Linden Road almost .6 miles to the creek crossing. Follow the creek .4 miles east into the site.

LITTLE BEAR HEMLOCKS

3273 Elm Ln.
Junction City, WI 54443

Located just west of the Mead Wildlife Area, Little Bear Hemlocks is one of four isolated woodlots. Little Bear Hemlocks is an excellent teaching and research site to study the effects of management of a once vast forest.

From the intersection of County G and US HH West in Junction City, go east on Hwy 10 for 2.4-miles, then north on State Hwy 34 for 1-mile, the parking area is not marked and sits about 200 feet north of Elm Road on Highway 34. The site lies north of Elm road. Hunting is not allowed.

JORDAN PARK

The Jordan Park Nature Trail, is located just 2 miles northeast of Stevens Point in Jordan Park. The non-surface trail, cuts through the woods winding through pines, wetlands and an oak and maple forest.



LOCATION

1903 Cty. Hwy. Y
Stevens Point, WI 54481



LAKE EMILY PARK

Located just east of Stevens Point, on Highway 10, Lake Emily County Park is a great spot for hiking. Several nature trails cut through the 143 acre park, which includes one of Portage County's largest lakes. Running just to the south of the park is the Tomorrow River State Trail. Lake Emily County Park also offers camping, swimming, picnic areas, playground and excellent fishing.

LOCATION

3961 Park Dr.
Amherst Junction, WI 54407





LOCATION

2419 Northpoint Dr.
Stevens Point, WI 54481

Parking is available at the Schmeckle Reserve Visitor Center at 2419 North Point Drive, Stevens Point, WI 54481.

Schmeckle Reserve, a 280 acre natural area on the University of Wisconsin-Stevens Point campus, offers 5 miles of trails, in addition to serving as the headquarters for the Green Circle. The Trail of Reflections is roughly a 1/2 mile trail, that is wheelchair accessible. The trail, which includes a reflection pond and a tree house, is a great place for wildlife viewing. Three of the most popular trail segments to explore in the reserve include the Lake Loop Trail, University Trail, and Berard Oaks Savanna. No pets are allowed on the trails within the Schmeckle Reserve.

LAKE LOOP TRAIL

The Lake Loop Trail is a 1-mile trail which loops around 24-acre Lake Joanis and offers wildlife viewing, sitting benches and water access for fishing.

BERARD OAKS SAVANNA

The Berard Oaks Savanna is an easy .5 mile walk from the Schmeckle Reserve Visitor Center. The 4-acre area is being restored as an oak savanna. On the way back, explore the Plank Trail, a short boardwalk that travels over rocky wetlands to Lake Joanis.

UNIVERSITY TRAIL

A segment of the Green Circle Trail, the University Trail is a 1.5 mile trail with a diverse habitat of forest, prairie, wetlands and an oak savanna. The trail is designed for bikers, hikers and joggers.

BUENA VISTA GRASSLANDS

4798 130th South St.
Wisconsin Rapids, WI 54494

The Buena Vista Prairie Chicken Meadow is a part of Buena Vista Marsh, a large outwash plain and former glacial lake bed. The land has since been altered by drainage, agricultural use and wildfires and its topography has been altered by fire and wind erosion. The site is dominated by bluegrass and is managed as open grassland for prairie chickens.

From the intersection of State Hwy 54 and County Hwy F, west of Plover, go south on County Hwy. F 6 miles, then east on Griffith Avenue .75 mile to the southern boundary of the natural area.

NEW HOPE PINES

2024 Sunset Lake Rd.
Amherst Junction, WI 54407

New Hope Pines features one of the largest northern dry-mesic forests in central Wisconsin and is reminiscent of the vast "pineries" found in this region prior to settlement. The site lies on steep, irregular topography in ground moraine - a legacy of the last glacier.

From the intersection of State Highway 66 and County Highway A just east of Rosholt, go south on A 1.5 miles, then east and south on County Highway T 1.3 miles, then south on Sunset Lake Road 1.5 miles to the parking area.

DEWEY MARSH

4099 N. Haymedow Dr.
Mosinee, WI 54455

Dewey Marsh contains a large expanse of northern sedge meadow. Rocks are exposed in many areas and there is little peat formation under the sedge mat. Large areas of peat and several acres were destroyed in a large fire in 1976.

From the intersection of I-39 and Business Highway 51 on the north end of Stevens Point, go north on I-39 about 9.1 miles, then east on County DB 1.9 miles, then south on County Highway X .7 mile, then east on Oakwood Drive 2.7 miles, then south on Hay Meadow Drive .8 mile to the southwest corner of the site. Park along the road.

PICKEREL LAKE

9301 Pickerel Lake Dr.
Almond, WI 54909

Pickerel Lake is a hard-water seepage lake with a fluctuating shoreline that provides ideal conditions for plants by flooding out competing plants and killing trees when water is high and provides habitat when water is low. Due to dense blooms of algae in summer, oxygen depletion and corresponding fish kills are not uncommon. Scattered throughout the oaks are small patches with prairie species, indicating this area was once a savanna.

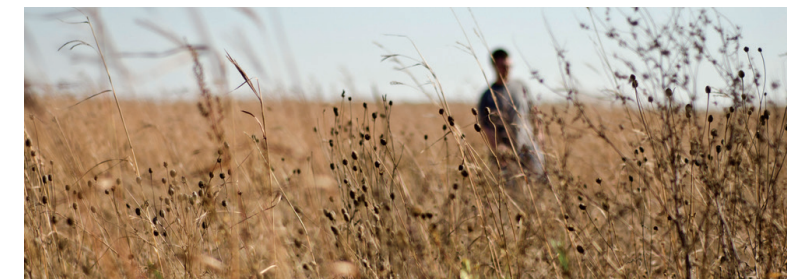
From the intersection of County Highways A, J, and D in the city of Almond in south central Portage County, go east on County D 4.5 miles, then turn north on D 4 miles to an access road which is next to a town hall.

EMMONS CREEK BARRONS

11121 6th Ave.
Waupaca, WI 54981

Located on a sandy glacial outwash, Emmons Creek Barrens supports an oak savanna with scattered bur and white oaks. Patches of wild lupine provide a habitat for the federally endangered karner blue butterfly. One portion is within the State Park, the other within the Fishery and Wildlife Area.

From the junction of Highways 10 and 54 in Waupaca, go west on 54 4.5 miles, then south on Hartman Creek Road to the State Park office and get a park map. Continue south on Hartman Creek Road, then go west on W. Windfeldt Lane to one of two parking areas.



WOLF LAKE PARK

This 137 acre park/recreation area is located on Wolf Lake, 4 miles northeast of the Village of Almond. The area is completely undeveloped but has a boat ramp, fishing area and picnic area. Approximately 2 miles of wooded hiking trails exist.

From Plover, take Highway 54 East turning onto County Highway EE heading south. Continue on County Highway EE, until intersecting with County Highway GG. Stay on County Highway GG until taking a right on to Wolf Lake Road. The park will be on your right.

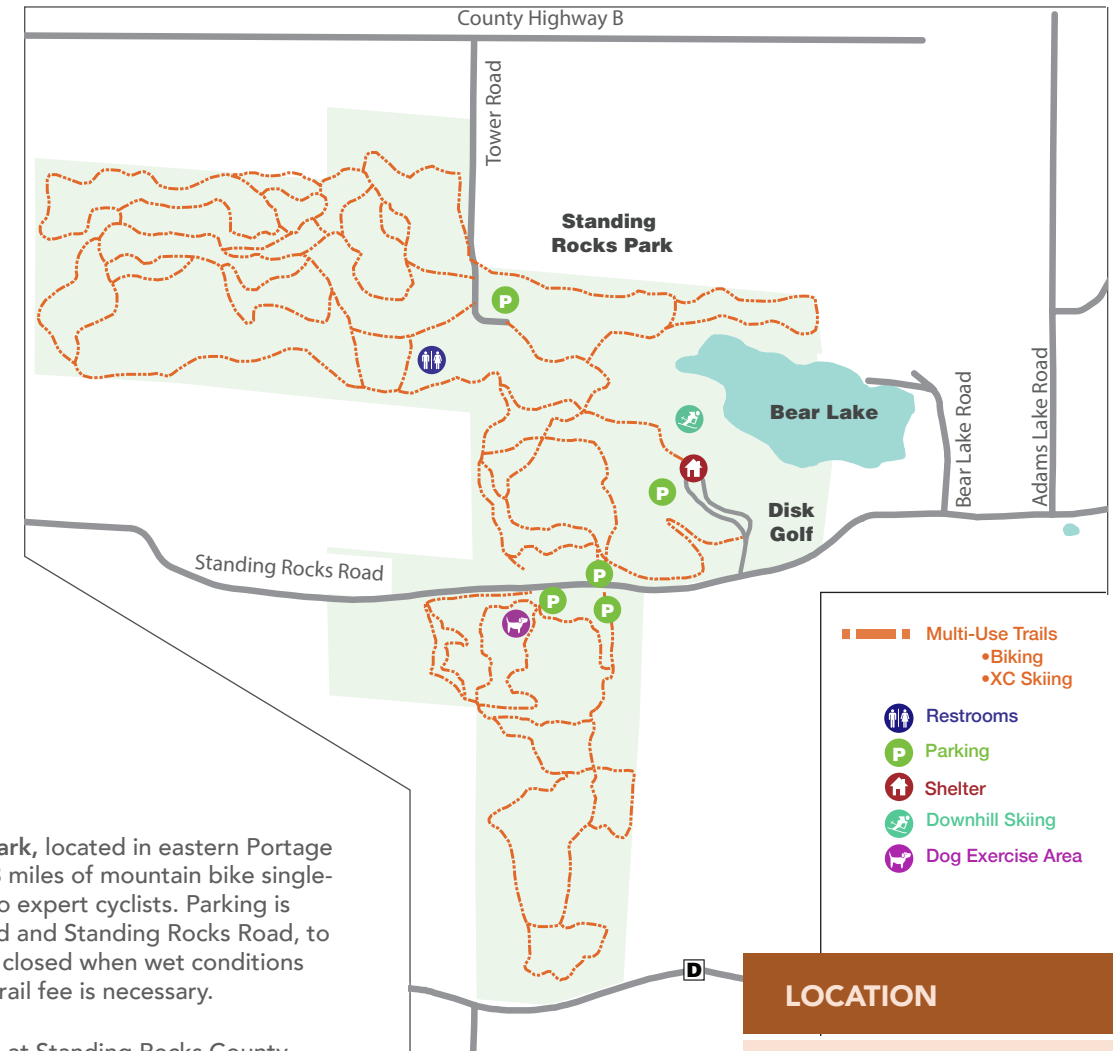
LOCATION

7687 Wolfe Lake Rd.
Almond, WI 54909



- Hiking Trails
- Restrooms
- Parking
- Boat Landing

STANDING ROCKS PARK



- Multi-Use Trails
 - Biking
 - XC Skiing
- Restrooms
- Parking
- Shelter
- Downhill Skiing
- Dog Exercise Area

Standing Rocks County Park, located in eastern Portage County, offers just over 13 miles of mountain bike single-track trails for beginners to expert cyclists. Parking is available off of Tower Road and Standing Rocks Road, to access the trails. Trails are closed when wet conditions exist. A daily or seasonal trail fee is necessary.

The cross-country ski trails at Standing Rocks County Park are marked for varying skills levels from beginner to advanced. The Green Trail is an easy 1.8 mile groomed trail, that is mostly flat. The Red Trail is an intermediate 4.9 mile groomed trail, with many hills. The Blue Trail is an expert 7.9 mile groomed trail, that has many steep hills. Weather permitting, the ski lodge is open weekdays from 11:00 a.m. to 4:30 p.m. and on the weekends from 8:30 a.m. to 4:30 p.m. The park also offers downhill skiing and a year-round dog exercise area. Parking is available off of Standing Rocks Road, to access the trails.

Call 715-346-1433
for snow and trail
conditions.

LOCATION

7695 Standing Rocks Rd.
Stevens Point, WI 54482

Located east of Plover off Hwy. B to south on Custer Road to Standing Rocks Road.

STEINHAUGEN RECREATION AREA



LOCATION

3485 Bentley Rd.
Custer, WI 54423

Located in eastern Portage County, north of Jordan Park, you'll find the newest Portage County park. Steinhaugen is a 270-acre managed forest and nature preserve in the Town of Sharon. Prior to being acquired as a Portage County park, the property was used by UW-Stevens Point College of Natural Resources. Steinhaugen is available for a variety of silent sports throughout the year, including hiking or snowshoeing when conditions exist. The land offers 4 miles of trails for hiking with 1.5 miles available for snowshoeing and 2.5 miles for fat tire biking. Parking is available off of Bentley Road.



LOCATION

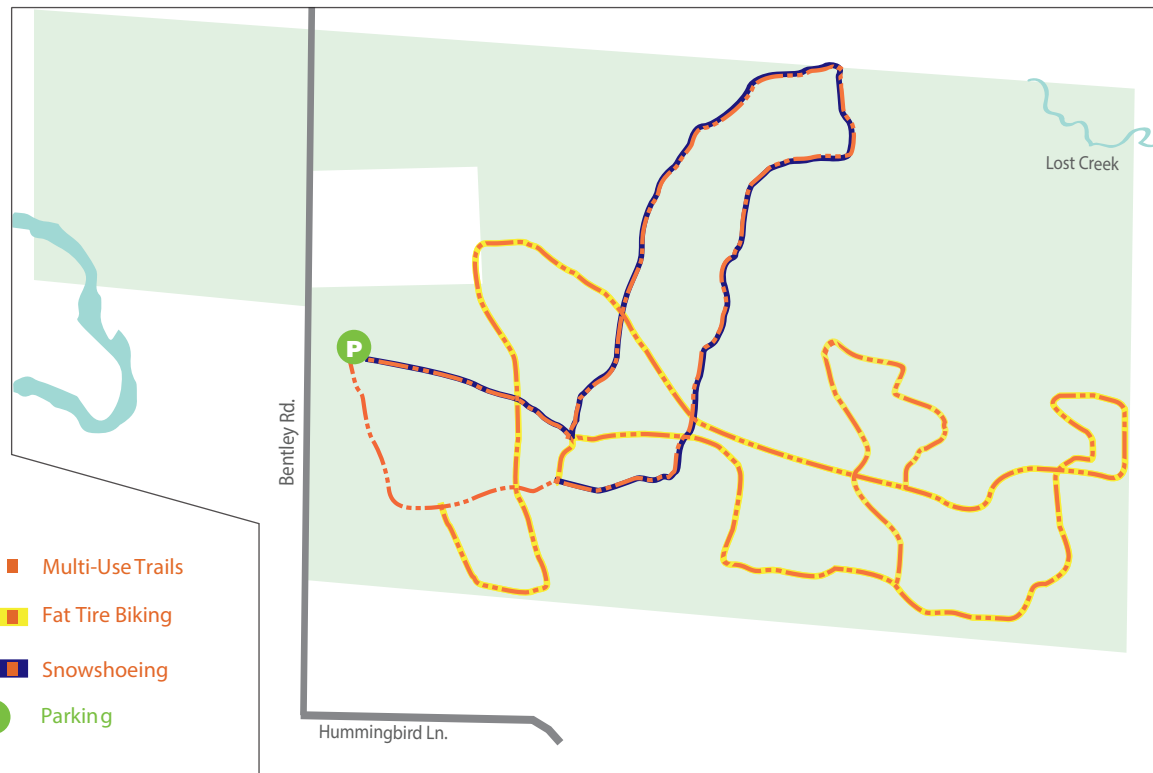
4373 Custer Rd.
Stevens Point, WI 54482

Explore the Tomorrow River State Trail, from the Plover trail head, just north of Highway B near the Hoover Avenue Green Circle Trail spur. The 28 mile trail, once a railroad bed, cuts through the rural landscape of eastern Portage County, linking Plover to the Village of Manawa in Waupaca County. Outdoor recreational enthusiasts can use the crushed limestone, throughout the year for snowmobiling, dog-sledding, and cross-country skiing in the winter to hiking, biking and horseback riding for the rest of the year. Trail passes are required.

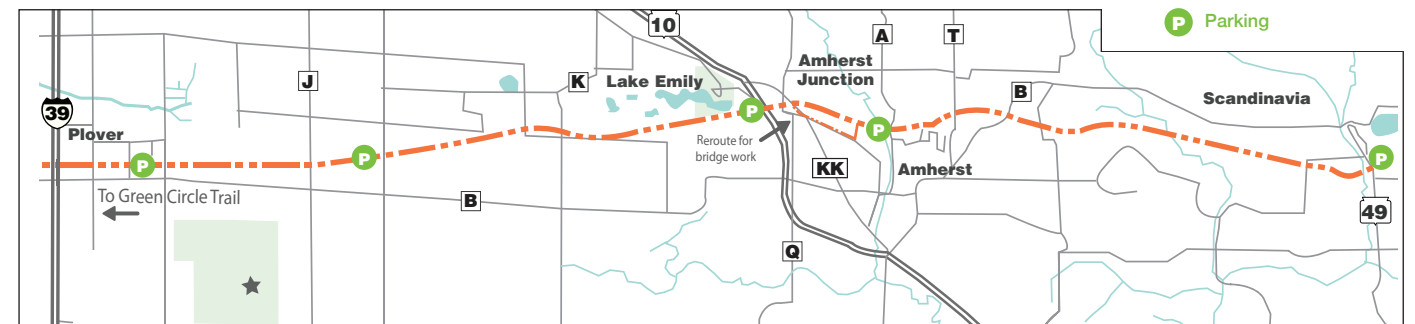
TOMORROW RIVER STATE TRAIL

Trailheads are located off Twin Towers Road in Plover, Amherst Junction, Cate Park in Amherst, and at the State Highway 49 overpass in Scandinavia. All Portage County trailhead parking areas accommodate horse trailers as does a parking lot on Custer Road. Additional parking and restrooms are available at Lake Emily County Park.

The Green Circle State Trail connects to the Tomorrow River State Trail at Hoover Road, just north of County Highway B in Plover.



- Multi-Use Trails
- Fat Tire Biking
- Snowshoeing
- Parking



- Multi-Use Trails
- Hiking
- Biking
- XC Skiing
- Horseback Riding
- Dog Sledding
- Snowmobiling

TRAIL ROUTES

Pages 13-41

- 1 Erickson Natural Area/Kozcizkowski Park* 12
- 2 Green Circle Trail and Spurs* H 34
- 3 George Mead Wildlife Area
- 4 Ice Age Trail (see pg 17 for complete trail)
- 5 Iverson Park*
- 6 Jordan Park
- 7 Lake Emily County Park
- 8 Wolf Lake Park
- 9 Schmeckle Reserve* County Map
- 10 Standing Rocks Park
- 11 TomorrowRiverStateTrail

STATE NATURAL AREAS

Pages 42-47

- 12 Mead Conifer Bogs
- 13 Little Bear Hemlocks
- 14 Dewey Marsh
- 15 Upper Little Wolf
- 16 Bradley Creek & Flume Creek
- 17 New Hope Pines
- 18 Buena Vista Marsh
- 19 Pickerel Lake
- 20 Emmons Creek

★ Stevens Point Convention & Visitors Bureau

ROAD BIKING ROUTES

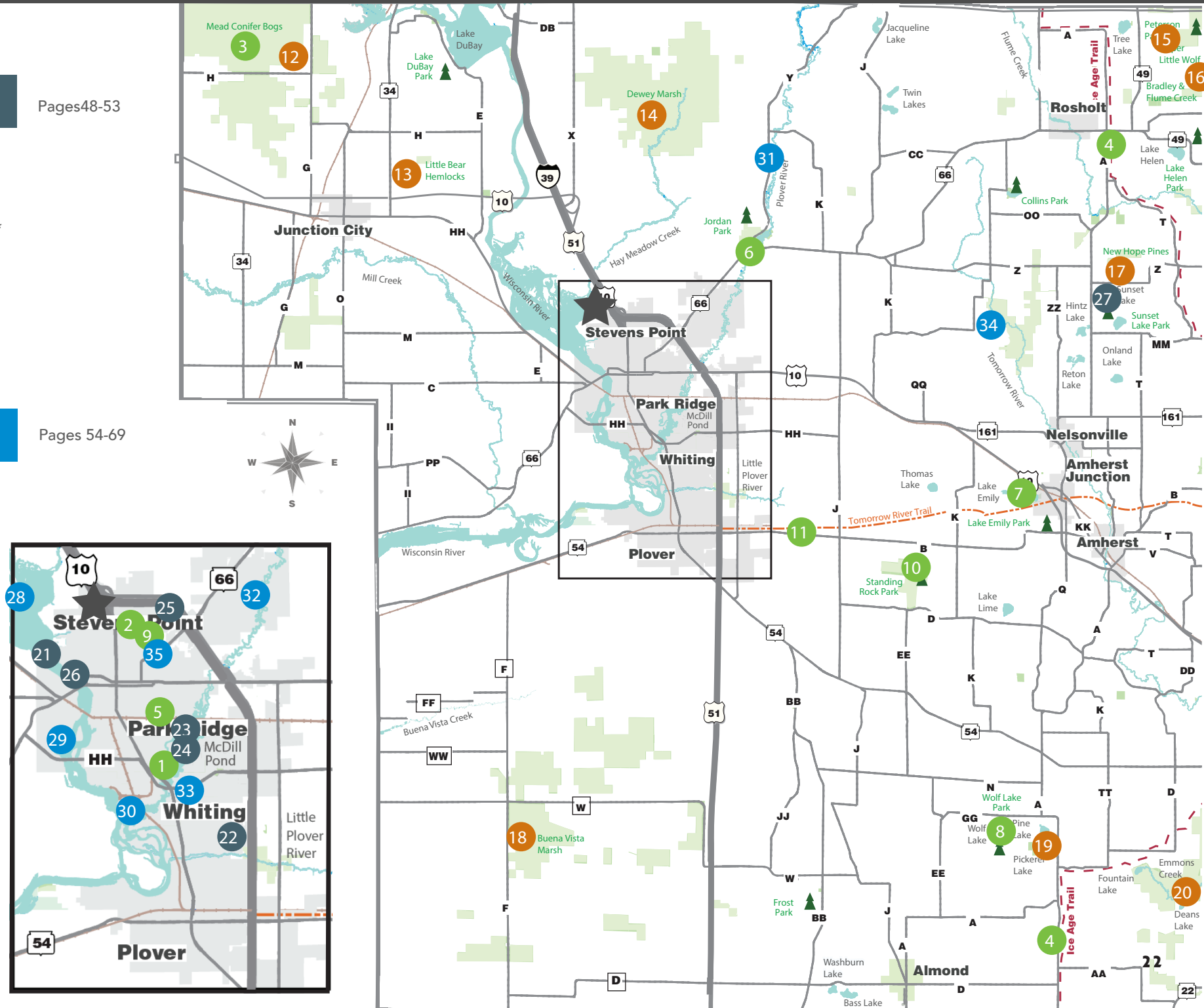
Pages 48-53

- 21 Old Wausau Road*
- 22 Plover to Amherst*
- 23 Lake Emily Loop*
- 24 Stevens Point to Polonia*
- 25 Wetlands*
- 26 West Loop*
- 27 Sunset Lake Area

PADDLING ROUTES

Pages 54-69

- 28 Wisconsin River North*
- 29 McDonald Island*
- 30 Blue Heron*
- 31 Upper Plover River
- 32 Lower Plover River*
- 33 McDill Pond*
- 34 Tomorrow River
- 35 Lake Joanis*



HEARTLAND TRAIL SPUR

LENGTH:
2.8 miles
SURFACE:
Asphalt paved trail
ACTIVITIES:
Hiking, jogging, biking, pets

The Heartland Trail Spur is a paved path that parallels Patch Street. Green Circle users can access the trail at the intersection of the Iverson Park and McDill Trails. The path travels from Michigan Avenue at its west end to the Portage County Business Park on the east side of Interstate 39 with a safe underpass trail beneath the highway.

HOOVER ROAD TRAIL SPUR

LENGTH:
4.9 miles
SURFACE:
Asphalt paved trail
ACTIVITIES:
Hiking, jogging, biking
Pets allowed only on the trail spur, not in Plover parks.
PARKING:
Little Plover River Park (middle), Worzella Pines/Lake Pacawa Parks

The Hoover Road Trail Spur is a popular spur that connects Stevens Point (north) with the Village of Plover (south). The trail spur is accessed via a short crushed granite connector path from the Mainland Meadows Trail and winds through the Whiting wellfield woodlands. The majority of the trail parallels Hoover Road. It is paved for easy biking and jogging.

PAPER MILL TRAIL

LENGTH:
1.7 miles
SURFACE:
Crushed granite and sidewalks
ACTIVITIES:
Hiking, jogging, biking, pets
PARKING:
Whiting Park/Cedar St. (east), corner of Sherman/Whiting Ave. (west)

The Paper Mill Trail spans from the edge of Upper Whiting Park (west) at the Plover River bridge to Sherman Ave. The trail meanders through Village of Whiting and paper mill woodlands following the Plover River flowage to its confluence with the Wisconsin River.

WESTSIDE LOOP TRAIL

LENGTH:
2.4 miles
SURFACE:
Crushed granite trails and sidewalks
ACTIVITIES:
Hiking, jogging, biking, pets
PARKING:
Corner of Sherman/Whiting Ave. (south), downtown (north)

The Westside Loop is an alternative route that follows the west side of the Wisconsin River. The loop spans from the Highway 66 river crossing in the north (Riverfront Trail) to the County HH river crossing in the south (River Pines Trail). The northern portion of the trail offers excellent views of historic downtown Stevens Point and the NewPage paper mill and dam.

MCDILL TRAIL

LENGTH:
1.4 miles
SURFACE:
Crushed granite and paved roads
ACTIVITIES:
Hiking, jogging, biking, pets
PARKING:
Patch St. (north), Whiting Park (south)

Spans from parking area along Wilshire Drive (west) to Highway 66 crossing (east). The Moses Creek Trail features the longest boardwalk on the Green Circle (nearly 1/2 mile). The trail meanders through wet woodlands and over pristine sedge meadows, providing ample wildlife watching opportunities.

WHITING CROSSING TRAIL

LENGTH:
2.2 miles
SURFACE:
Crushed granite, trail and paved roads
ACTIVITIES:
Hiking, jogging, biking, pets
PARKING:
Whiting Park

The scenic Whiting Crossing Trail is accessed at the intersection of the McDill Trail on the east, and the Paper Mill Trail on the west. The eastern portion of the trail winds through the scenic Mainland Meadows, part of the Village of Whiting well field. You can take a short break from the Green Circle here for loop trails. The majority of the trail follows roads through quiet neighborhoods. The western portion also offers access to Upper Whiting Park, offering views of the Whiting dam, the wide Plover River, an abundance of year-round waterfowl, and Indian Mounds.

RIVER PINES TRAIL

LENGTH:
3.5 miles
SURFACE:
Crushed granite trail (along river), paved roads, sidewalks
ACTIVITIES:
Hiking, jogging, biking, pets
PARKING:
corner of Sherman/Whiting Ave. (south), downtown (north)

The River Pines Trail extends from Sherman River in the south to the Highway 66 bridge over the Wisconsin River in the north. The majority of the trail meanders through natural forest as it follows the Wisconsin River shoreline. One of the most scenic portions of the trail, this section offers views of rocky outcroppings, islands, large white pine and oak trees, and incredible sunsets.

RIVERFRONT TRAIL

LENGTH:
1.3 miles
SURFACE:
Asphalt paved trail
ACTIVITIES:
Hiking, jogging, biking, pets
PARKING:
Bukolt Park (north), downtown (south)

The Westside Loop is an alternative route that follows the west side of the Wisconsin River. The loop spans from the Highway 66 river crossing in the north (Riverfront Trail) to the County HH river crossing in the south (River Pines Trail).

STAGECOACH TRAIL

LENGTH:
2.2 miles
SURFACE:
Paved roads
ACTIVITIES:
Hiking, jogging, biking, pets
PARKING:
Bukolt Park (west), Zenoff Park (east)

The Stagecoach Trail spans from Bukolt Park (southwest) to Zenoff Park (east) along quiet neighborhood roadways. It provides stunning views of the quiet Wisconsin River north of Stevens Point. Old Wausau Road has extended shoulders for biking.



Photo by KT Elements



Photo by KT Elements