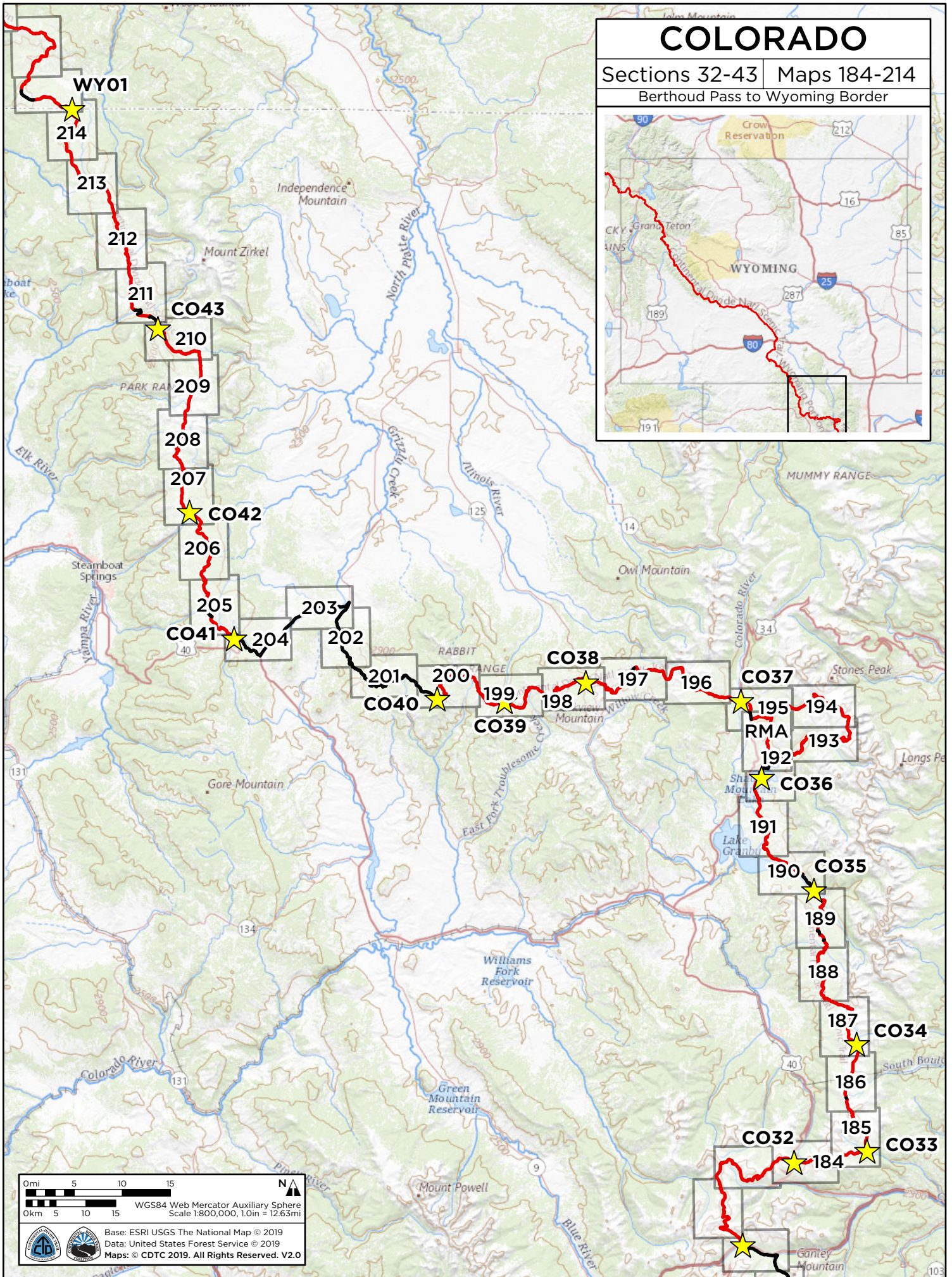


COLORADO

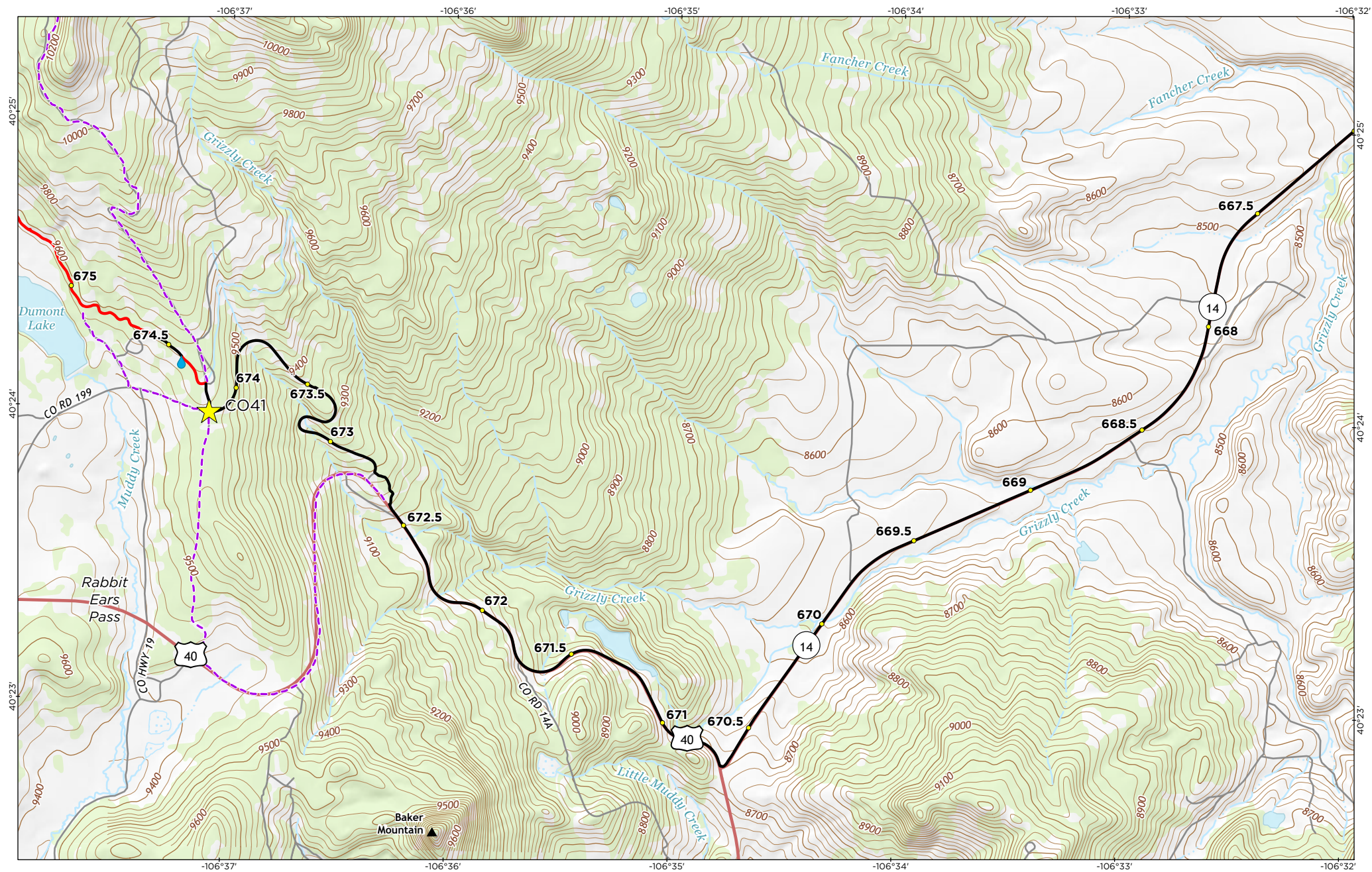
Sections 32-43 Maps 184-214

Berthoud Pass to Wyoming Border

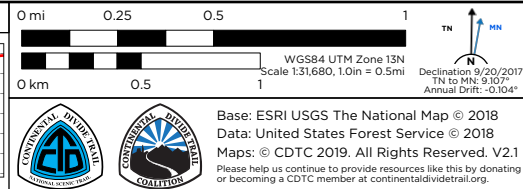
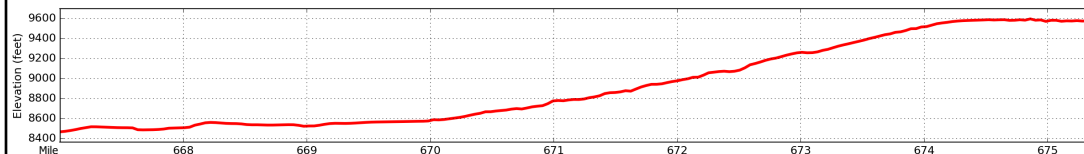


0mi 5 10 15
0km 5 10 15
WGS84 Web Mercator Auxiliary Sphere
Scale 1:800,000, 1.0in = 12.63mi

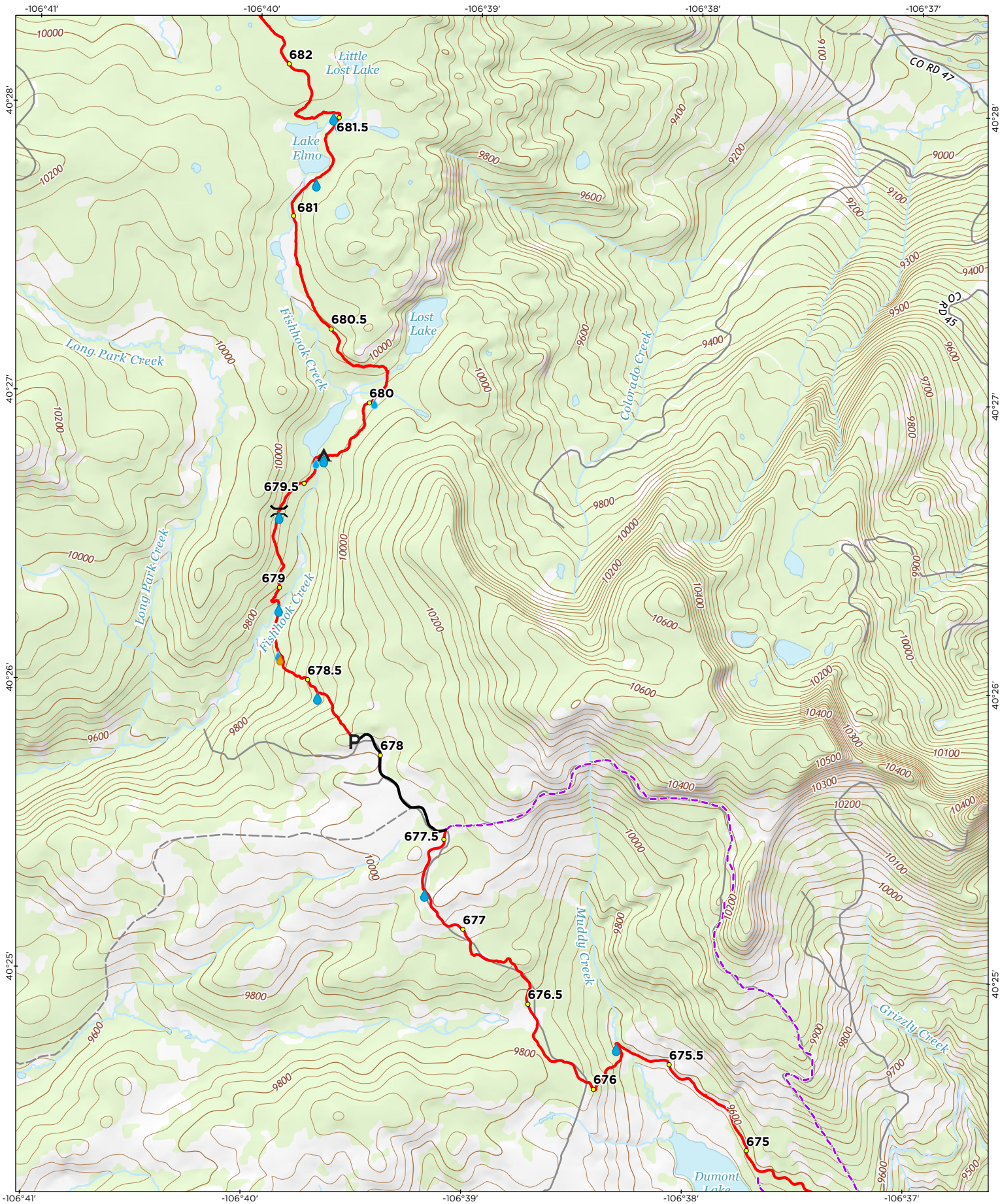
Base: ESRI USGS The National Map © 2019
Data: United States Forest Service © 2019
Maps: © CDTIC 2019. All Rights Reserved. V2.0



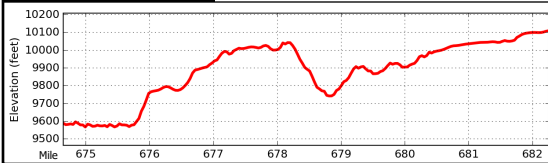
PAGE AT A GLANCE



COLORADO	
Section 41	667.5-675.0
Rabbit Ears Pass to Buffalo Pass	
<h1>204</h1>	



PAGE AT A GLANCE



Base: ESRI USGS The National Map © 2018
 Data: United States Forest Service © 2018
 Maps: © CDTC 2019. All Rights Reserved. V2.1
 Please help us continue to provide resources like this by donating or becoming a CDTC member at continentaldividetrail.org.

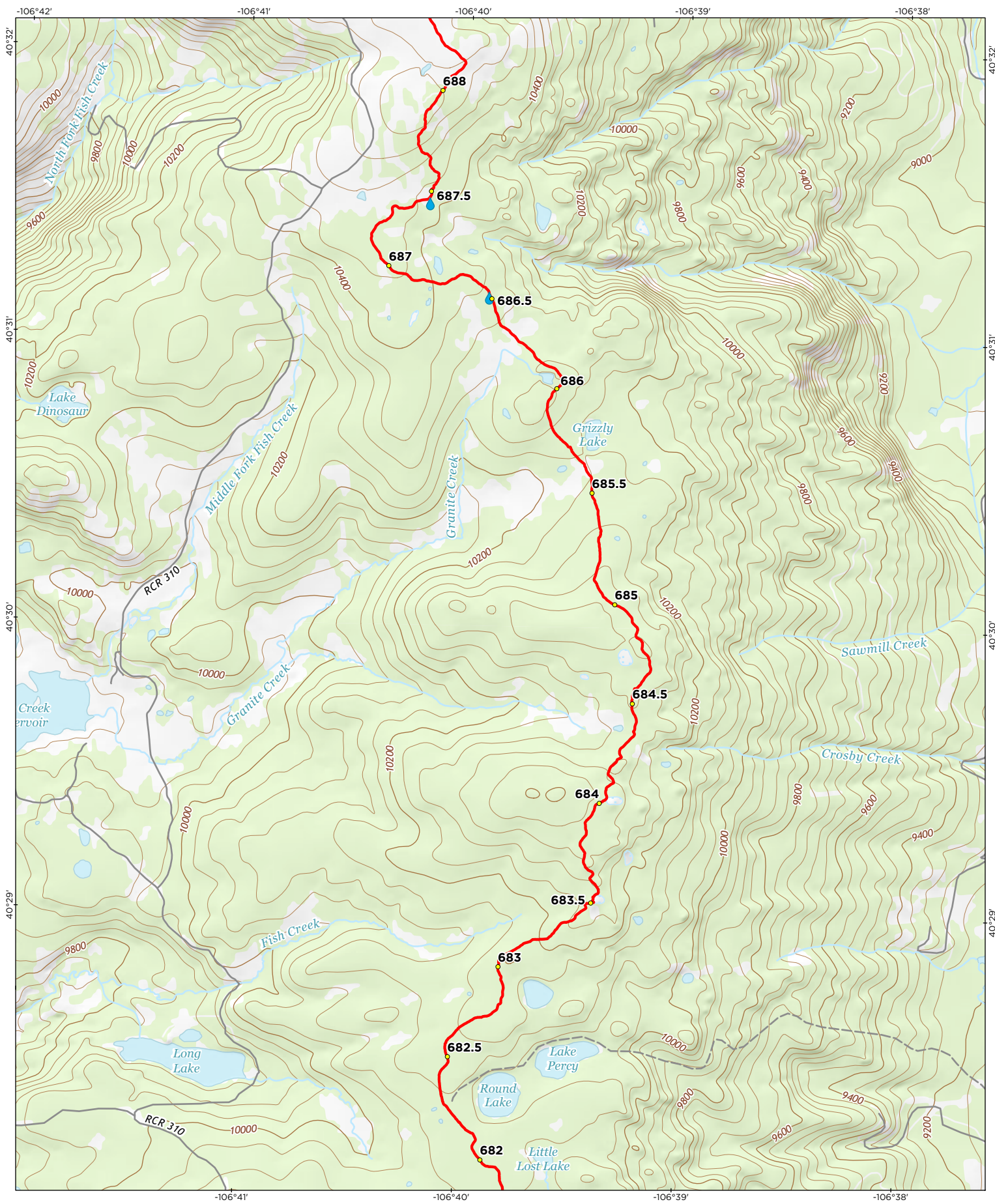


COLORADO

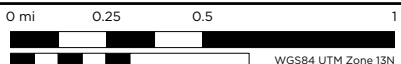
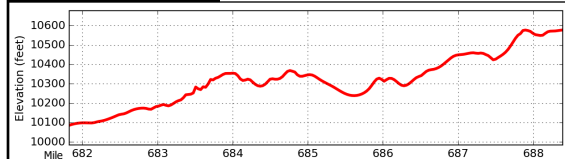
Section 41 | 675.0-682.0



Rabbit Ears Pass to Buffalo Pass

205

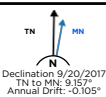


PAGE AT A GLANCE





Base: ESRI USGS The National Map © 2018
Data: United States Forest Service © 2018
Maps: © CDTC 2019. All Rights Reserved. V2.1
Please help us continue to provide resources like this by donating or becoming a CDTC member at continentaldividetrail.org.

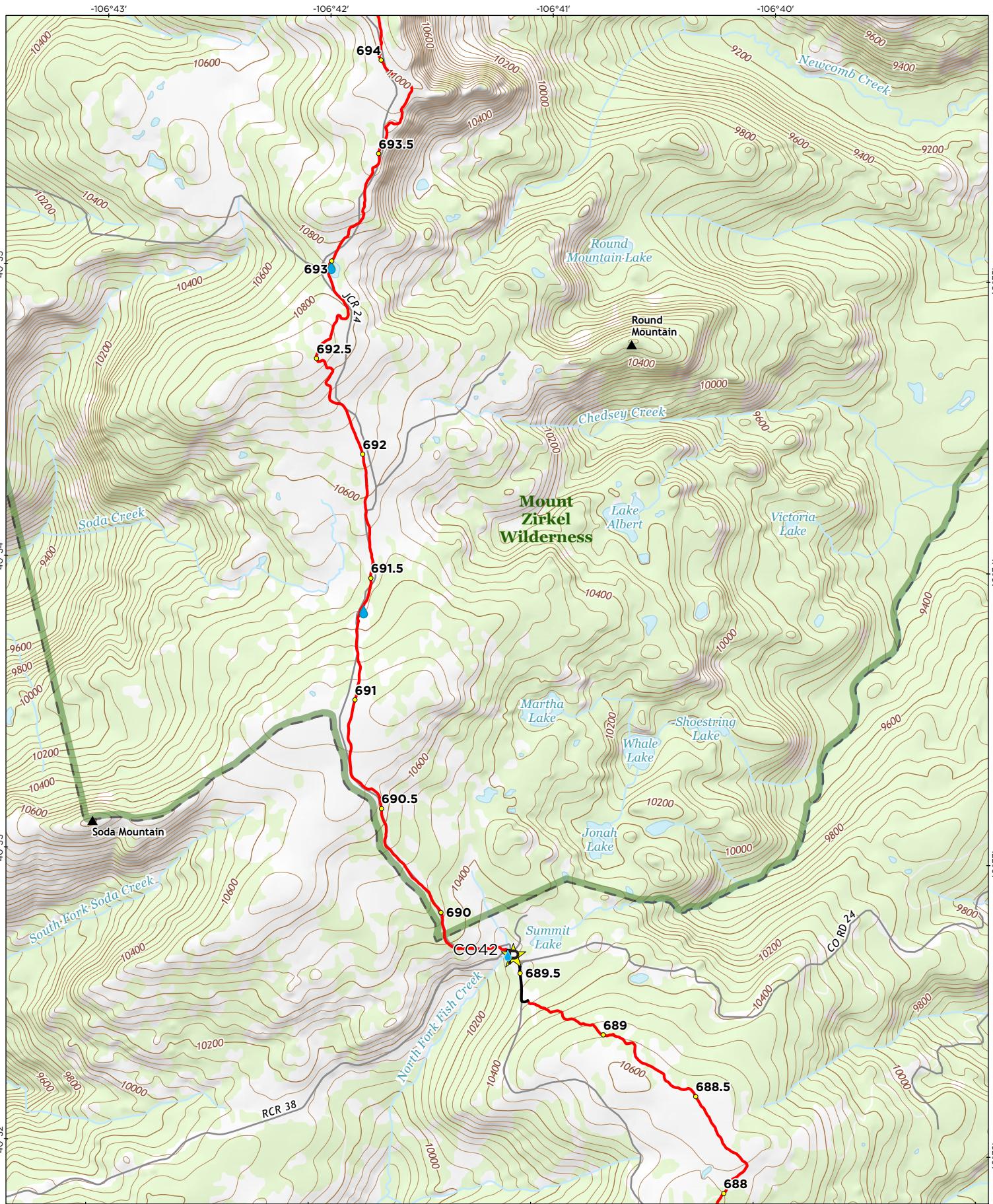


COLORADO

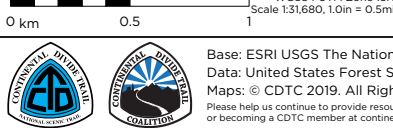
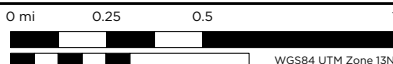
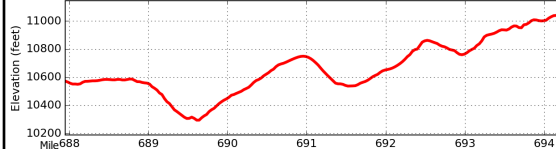
Section 41 | 682.0-688.0

Rabbit Ears Pass to Buffalo Pass

206



PAGE AT A GLANCE **MOUNT ZIRKEL WILDERNESS**



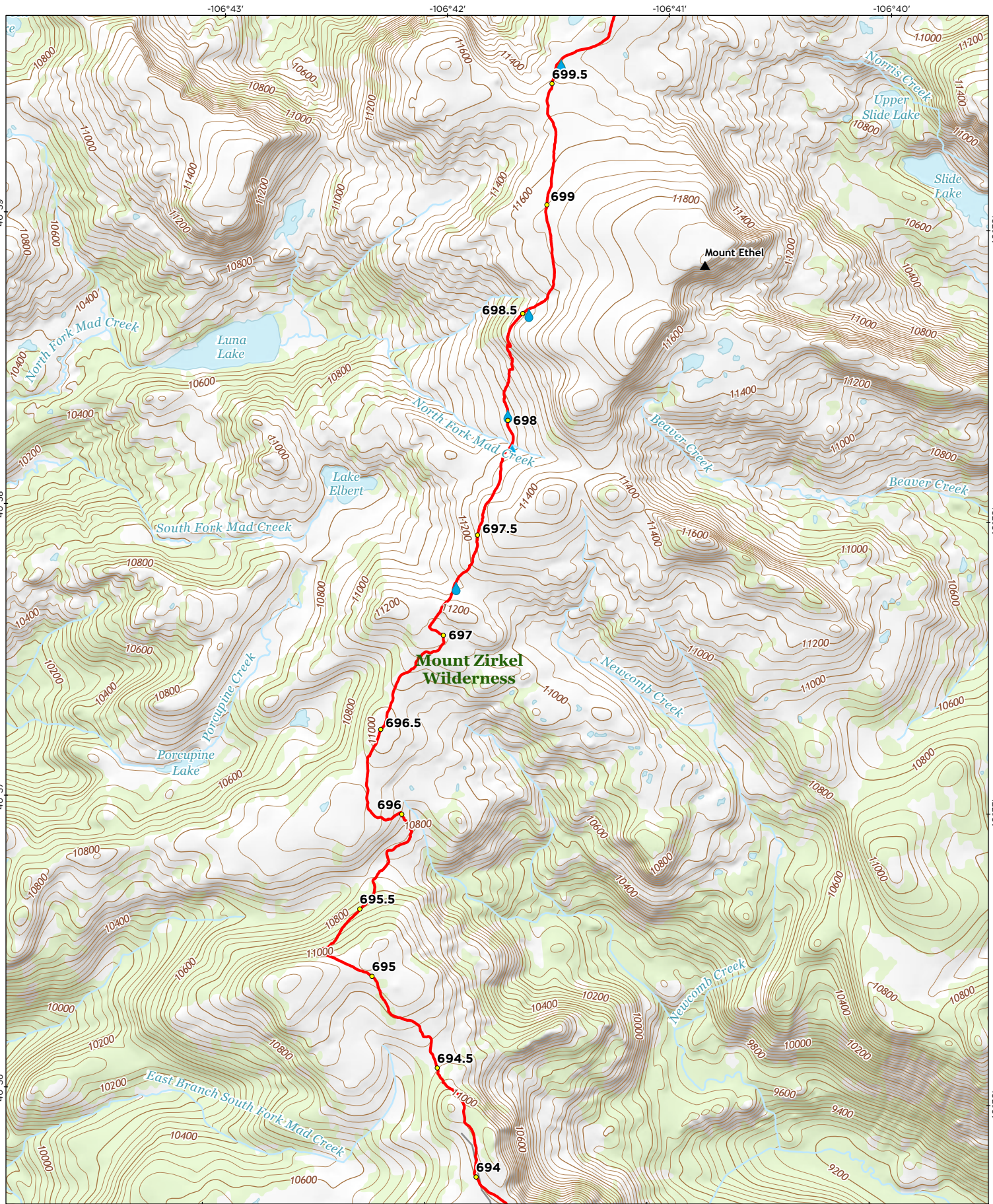
Base: ESRI USGS The National Map © 2018
Data: United States Forest Service © 2018
Maps: © CDTC 2019. All Rights Reserved. V2.1
Please help us continue to provide resources like this by donating or becoming a CDTC member at continentaldividetrail.org.

COLORADO

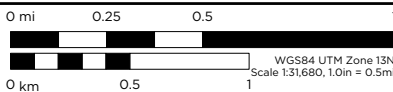
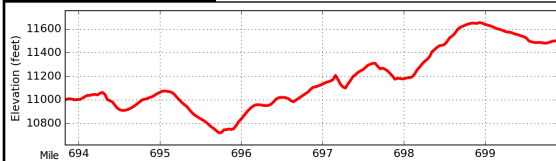
Section 42 | 688.0-694.0

Buffalo Pass to North Lake

207



PAGE AT A GLANCE MOUNT ZIRKEL WILDERNESS



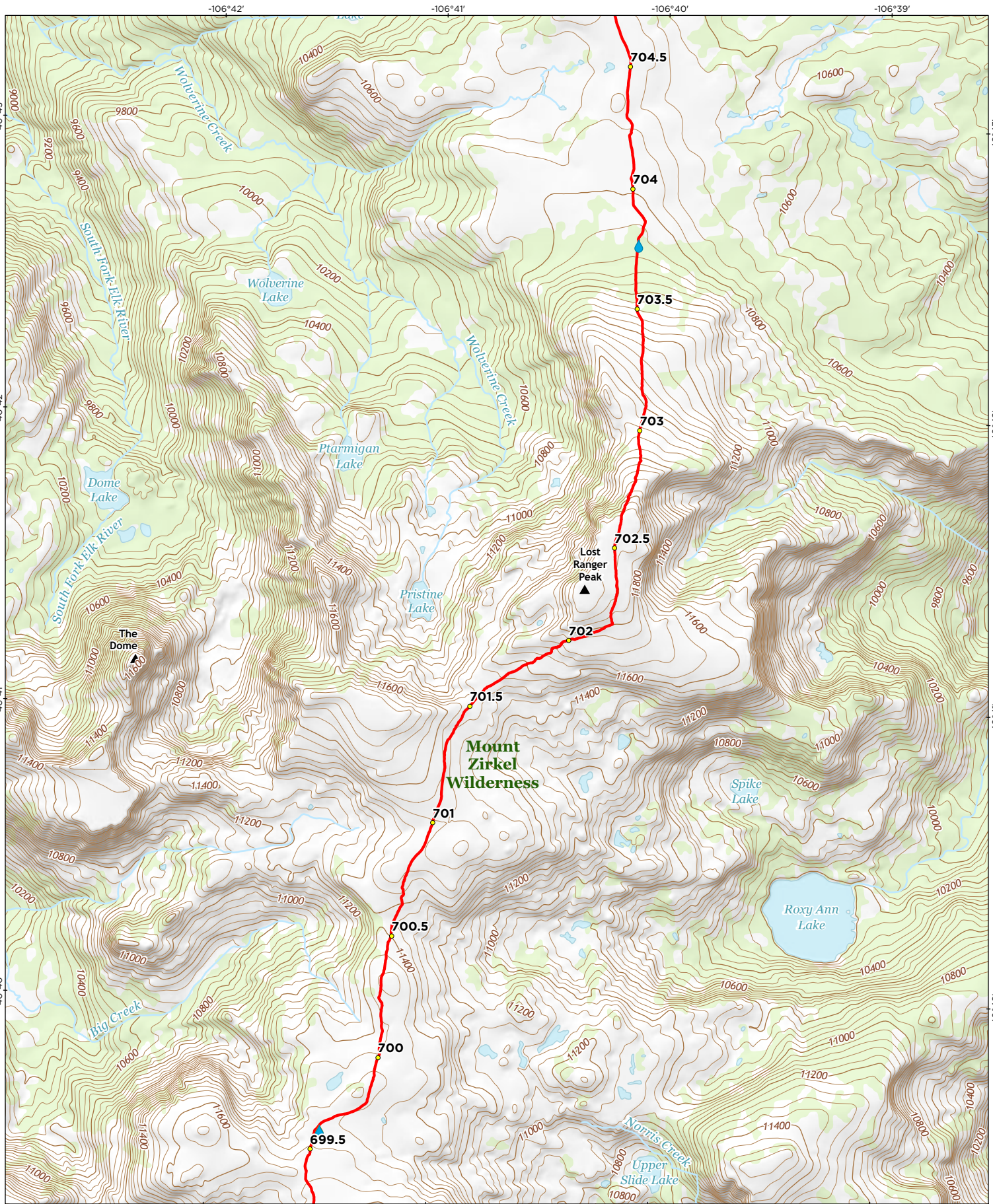
Base: ESRI USGS The National Map © 2018
Data: United States Forest Service © 2018
Maps: © CDTC 2019. All Rights Reserved. V2.1
Please help us continue to provide resources like this by donating or becoming a CDTC member at continentaldividetrail.org.

COLORADO

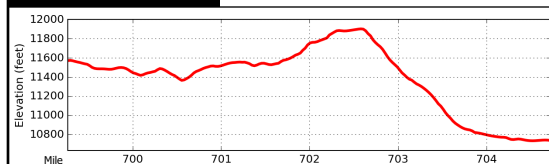
Section 42 | 694.0-699.5

Buffalo Pass to North Lake

208

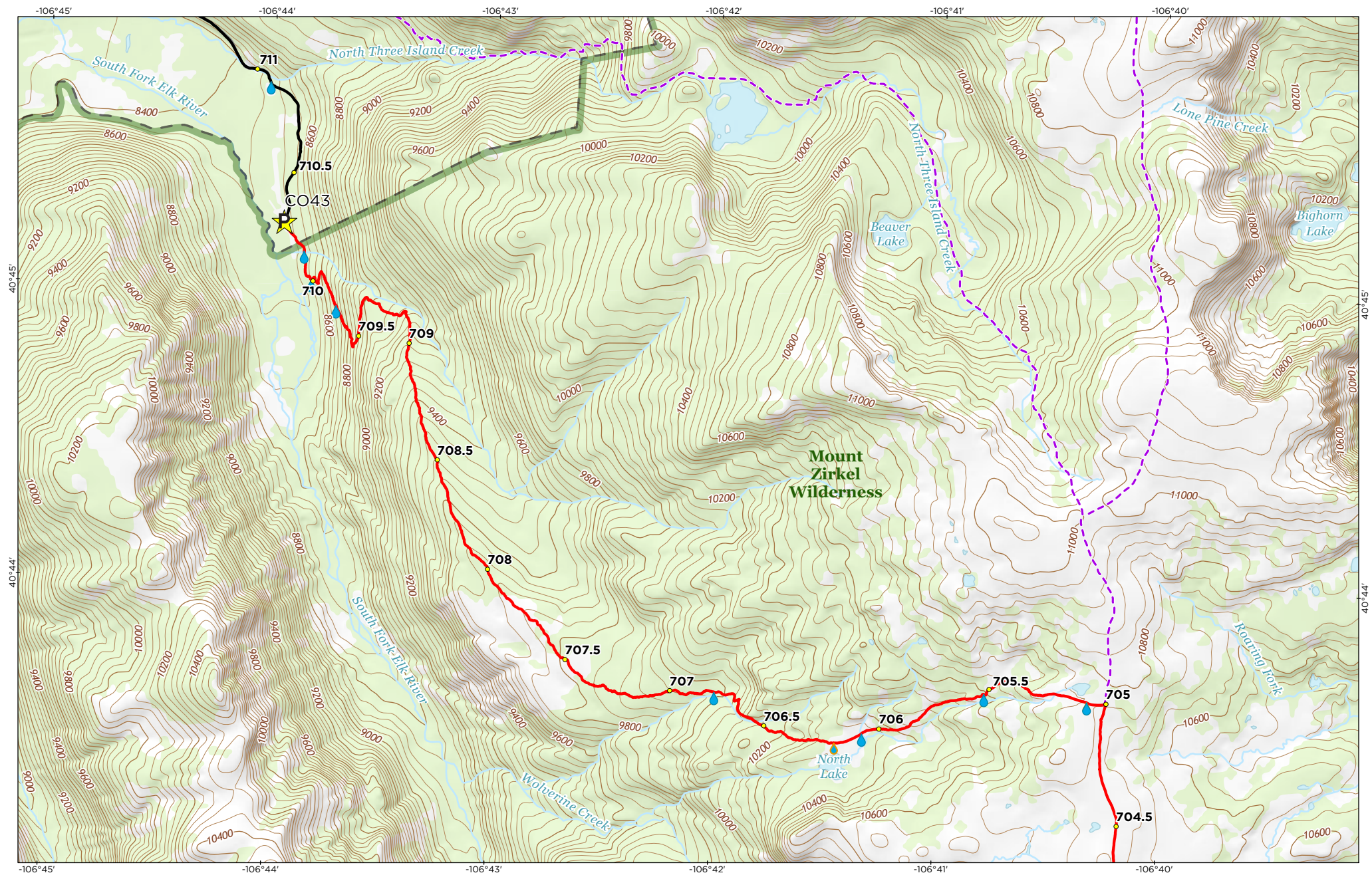


PAGE AT A GLANCE **MOUNT ZIRKEL WILDERNESS**

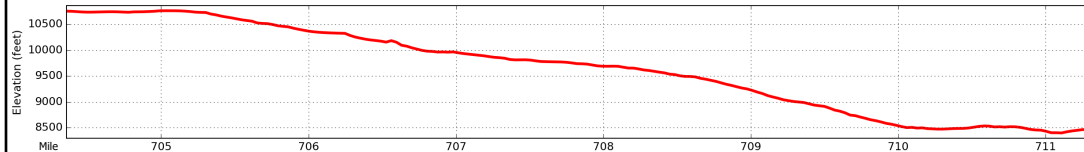


Base: ESRI USGS The National Map © 2018
 Data: United States Forest Service © 2018
 Maps: © CDTC 2019. All Rights Reserved. V2.1
 Please help us continue to provide resources like this by donating or becoming a CDTC member at continentaldividetrail.org.

COLORADO	
Section 42	699.5-704.5
Buffalo Pass to North Lake	
209	



PAGE AT A GLANCE **MOUNT ZIRKEL WILDERNESS**



0 mi 0.25 0.5 1

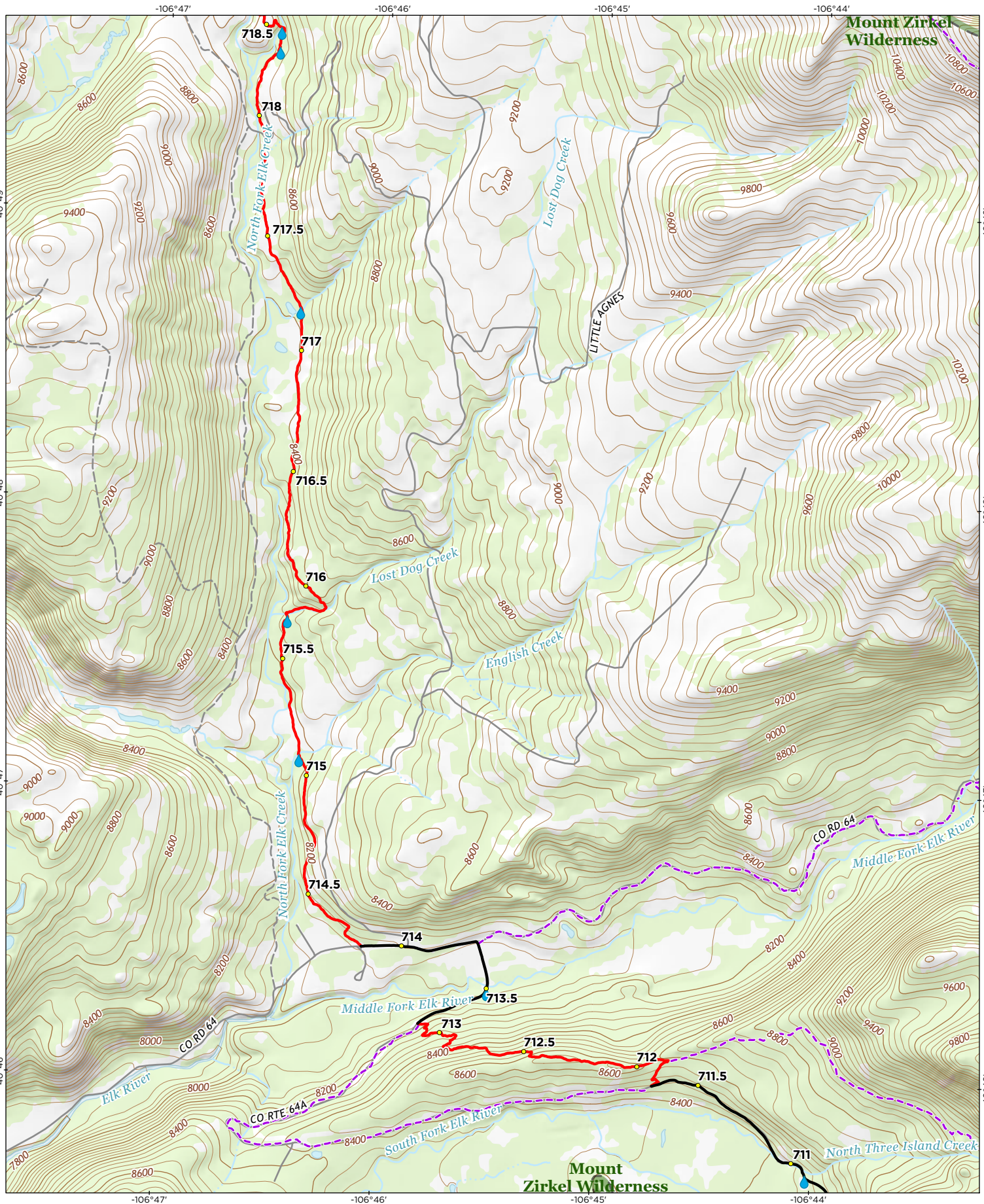
0 km 0.5 1

WGS84 UTM Zone 13N
Scale 1:31,680, 1.0in = 0.5mi

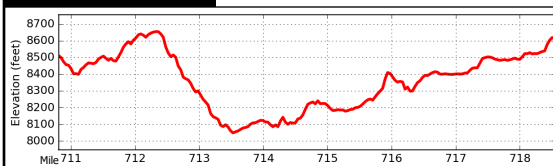
Declination 9/20/2017
TN to MN: 9.201°
Annual Drift: -0.105°

Base: ESRI USGS The National Map © 2018
 Data: United States Forest Service © 2018
 Maps: © CDTC 2019. All Rights Reserved. V2.1
 Please help us continue to provide resources like this by donating or becoming a CDTC member at continentaldividetrail.org.

COLORADO	
Section 42	704.5-711.0
Buffalo Pass to North Lake	
210	



PAGE AT A GLANCE



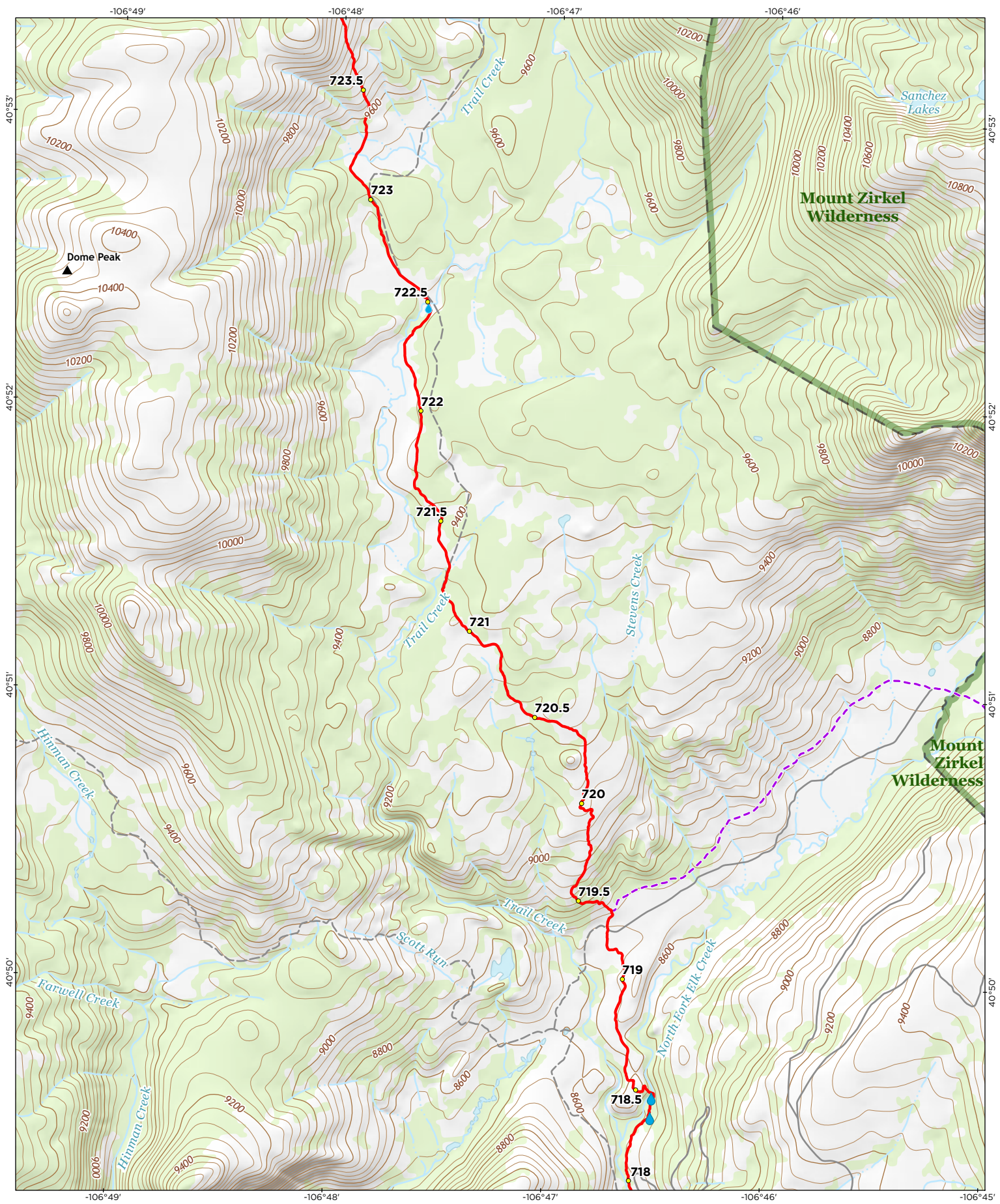
Base: ESRI USGS The National Map © 2018
 Data: United States Forest Service © 2018
 Maps: © CDTIC 2019. All Rights Reserved. V2.1
 Please help us continue to provide resources like this by donating or becoming a CDTIC member at continentaldividetrail.org.

COLORADO

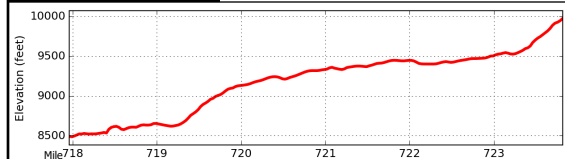
Section 43 | 711.0-718.5

North Lake to Wyoming Border

211



PAGE AT A GLANCE



0 mi0.250.51

0 km0.5

WGS84 UTM Zone 13N

Scale 1:31,680, 1.0in = 0.5mi

Declination 9/20/2017
TN to MH: 0.255°
Annual Drift: -0.105°

Base: ESRI USGS The National Map © 2018

Data: United States Forest Service © 2018

Maps: © CDTC 2019. All Rights Reserved. V2.1

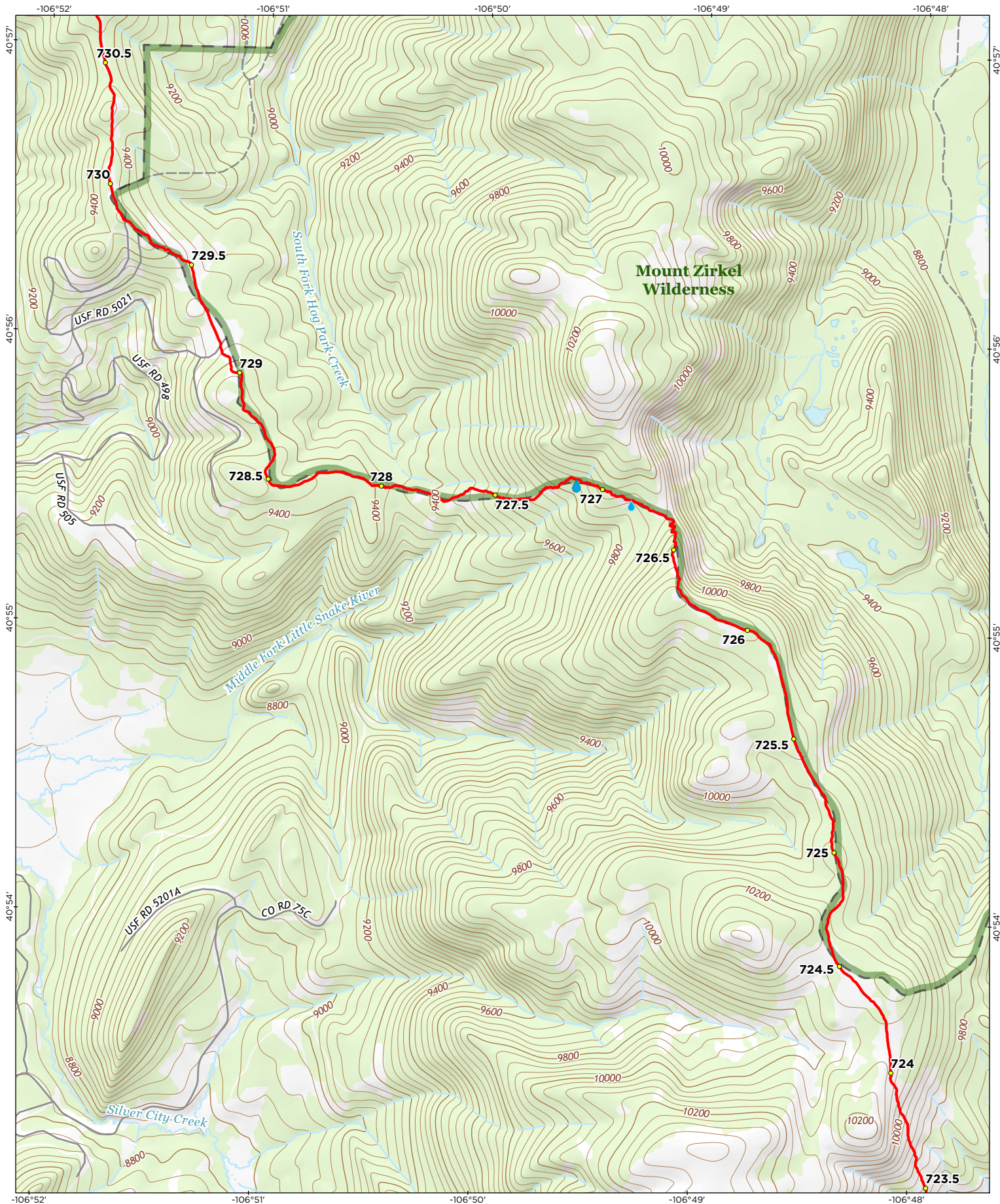
Please help us continue to provide resources like this by donating or becoming a CDTC member at continentaldividetrail.org.

COLORADO

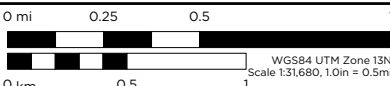
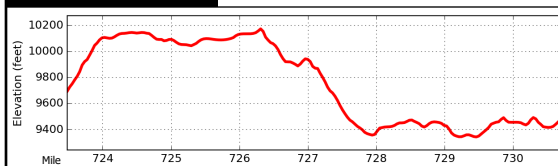
Section 43 | 718.0-723.5

North Lake to Wyoming Border

212



PAGE AT A GLANCE MOUNT ZIRKEL WILDERNESS



Base: ESRI USGS The National Map © 2018
Data: United States Forest Service © 2018
Maps: © CDTIC 2019. All Rights Reserved. V2.1
Please help us continue to provide resources like this by donating or becoming a CDTIC member at continentaldividetrail.org.

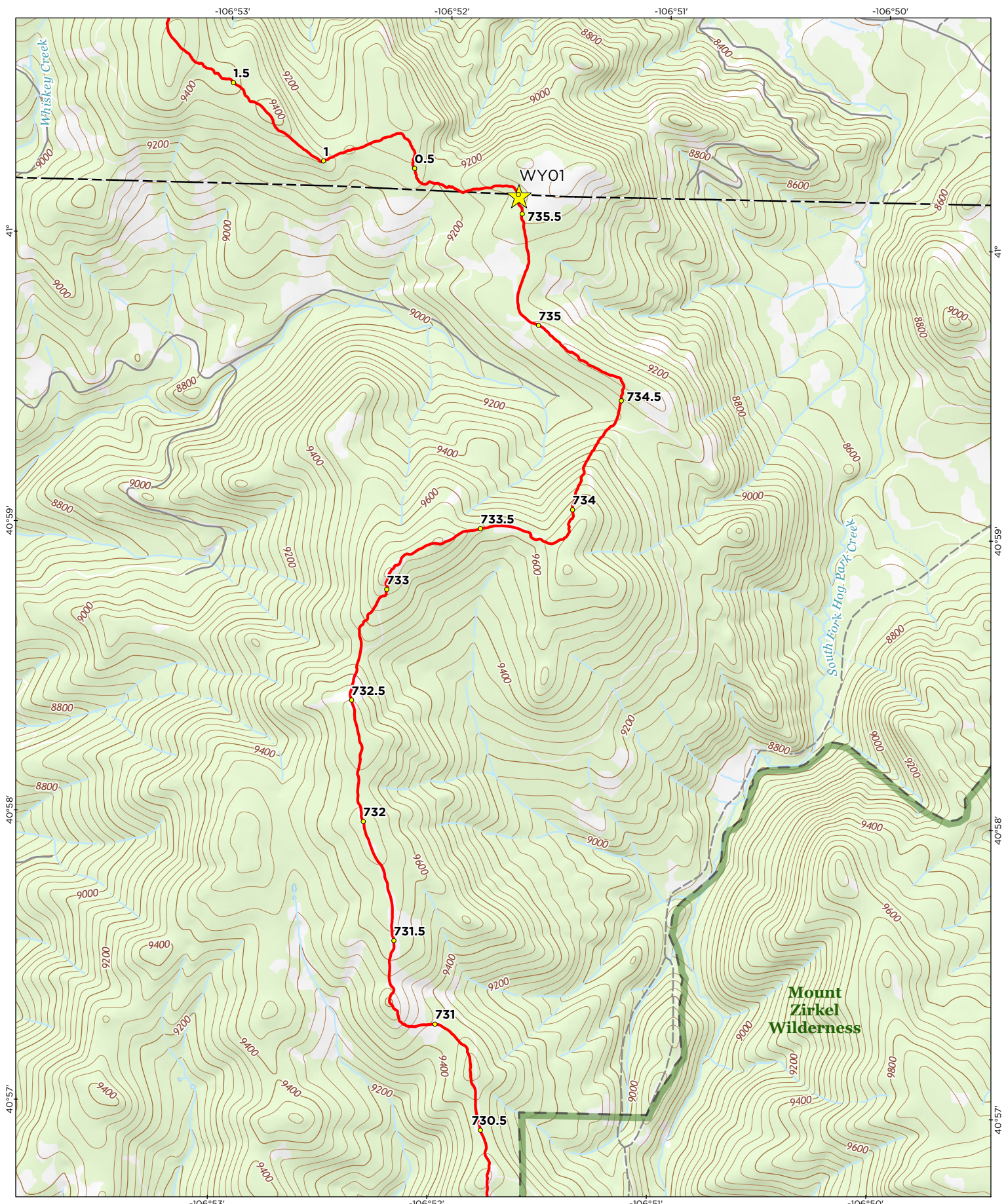


COLORADO

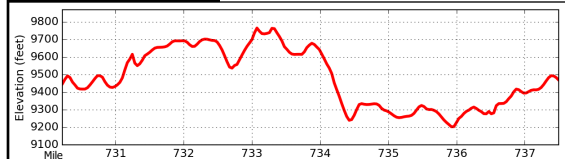
Section 43 | 723.5-730.5

North Lake to Wyoming Border

213





PAGE AT A GLANCE



0 mi 0.25 0.5 1
0 km 0.5

WGS84 UTM Zone 13N
Scale 1:31,680, 1.0in = 0.5mi
Declination 9/20/2017
TN to MN: 9.305°
Annual Drift: -0.105°

Base: ESRI USGS The National Map © 2018
Data: United States Forest Service © 2018
Maps: © CDTC 2019. All Rights Reserved. V2.1
Please help us continue to provide resources like this by donating or becoming a CDTC member at continentaldivertail.org.

COLORADO
Section 43 | 730.5-736.0
North Lake to Wyoming Border

214