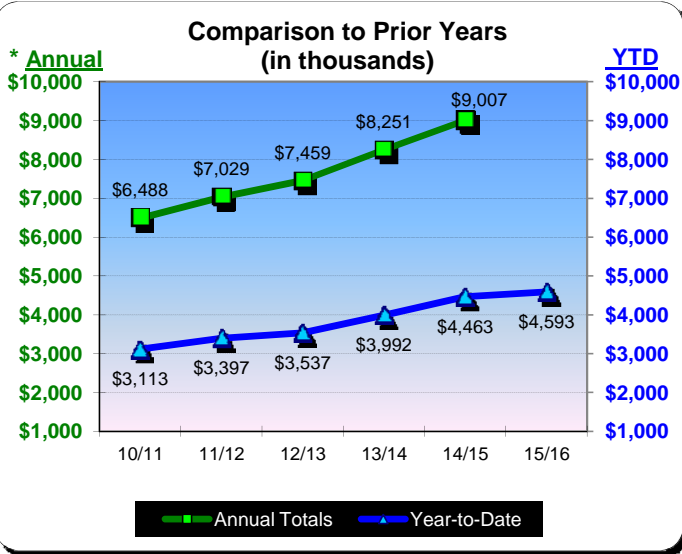
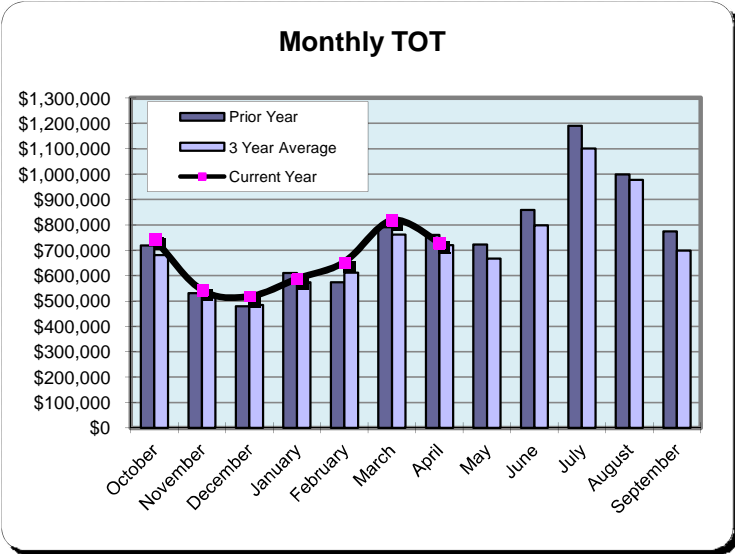


City of Huntington Beach Transient Occupancy Tax Receipts Report Fiscal Year 2015/16

Huntington Beach Hotels 10% Transient Occupancy Tax Receipts Reflecting April Occupancies

Current Month - April 2016			
Last Year	This Year	Change	% Change
\$759,725	\$729,268	(\$30,457)	(4.0%)

Year to Date - April 2016			
Last Year	This Year	Change	% Change
\$4,463,068	\$4,592,912	\$129,844	2.9%



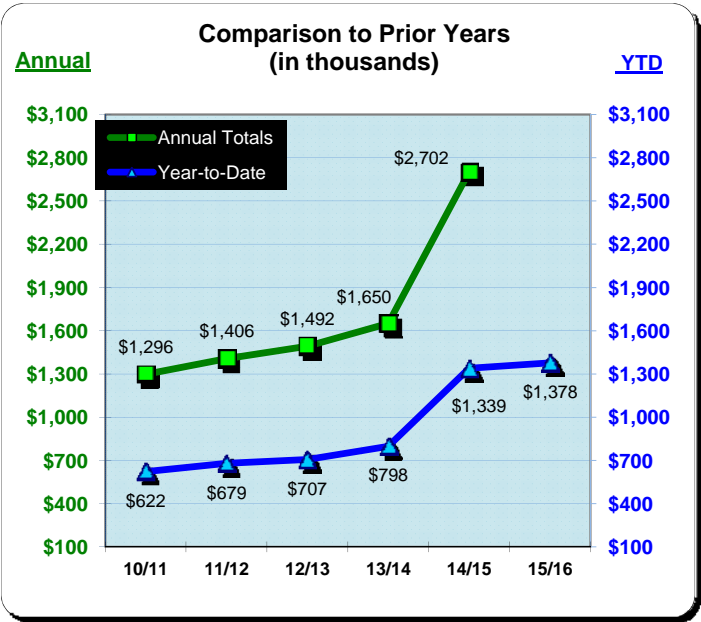
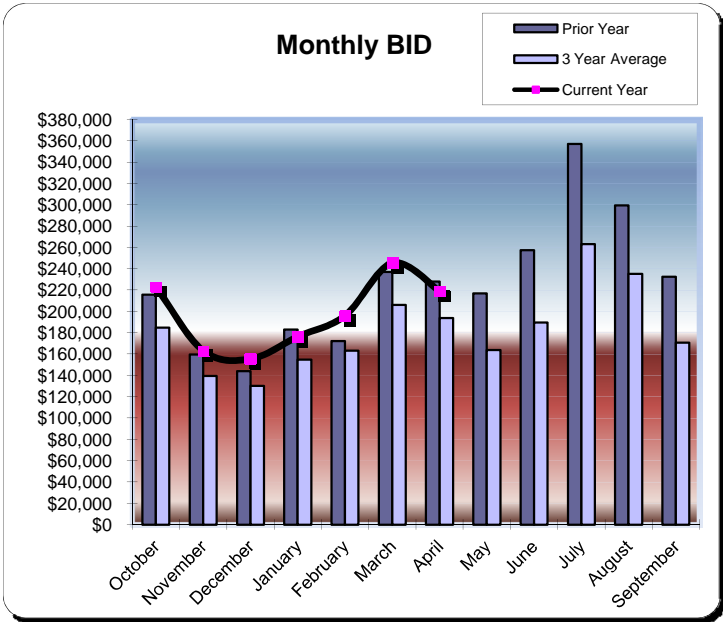
	Fiscal Year 2012/13		Fiscal Year 2013/14		Fiscal Year 2014/15		Fiscal Year 2015/16	
	Actual	% Change Prior Yr	Actual	% Change Prior Yr	Actual	% Change Prior Yr	Actual	% Change Prior Yr
October	\$607,091	11.5%	\$579,126	(4.6%)	\$718,440	24.1%	\$743,823	3.5%
November	\$407,707	2.2%	\$477,478	17.1%	\$531,343	11.3%	\$543,237	2.2%
December	\$343,813	6.5%	\$456,603	32.8%	\$479,470	5.0%	\$517,749	8.0%
January	\$408,967	(8.9%)	\$524,101	28.2%	\$609,742	16.3%	\$587,211	(3.7%)
February	\$516,653	0.8%	\$606,026	17.3%	\$574,060	(5.3%)	\$653,490	13.8%
March	\$657,196	11.8%	\$677,075	3.0%	\$790,289	16.7%	\$818,134	3.5%
April	\$595,333	2.3%	\$671,182	12.7%	\$759,725	13.2%	\$729,268	(4.0%)
May	\$594,402	0.1%	\$685,575	15.3%	\$722,717	5.4%		
June	\$759,956	8.5%	\$777,981	2.4%	\$858,256	10.3%		
July	\$1,029,547	11.0%	\$1,081,288	5.0%	\$1,190,219	10.1%		
August	\$917,183	9.9%	\$1,014,751	10.6%	\$998,152	(1.6%)		
September	\$621,347	7.8%	\$699,658	12.6%	\$774,736	10.7%		
Total:	<u>\$7,459,194</u>	6.1%	<u>\$8,250,843</u>	10.6%	<u>\$9,007,147</u>	9.2%	<u>\$4,592,912</u>	2.9%

City of Huntington Beach Transient Occupancy Tax Receipts Report Fiscal Year 2015/16

Huntington Beach Hotels 3% Business Improvement Assessment District Reflecting April Occupancies

Current Month - April 2016			
Last Year	This Year	Change	% Change
\$227,918	\$218,780	(\$9,137)	(4.0%)

* Year to Date - April 2016			
Last Year	This Year	Change	% Change
\$1,338,920	\$1,377,805	\$38,885	2.9%



	Fiscal Year 2012/13		Fiscal Year 2013/14		Fiscal Year 2014/15		Fiscal Year 2015/16	
	Actual	% Change Prior Yr	Actual	% Change Prior Yr	Actual	% Change Prior Yr	Actual	% Change Prior Yr
October	\$121,418	11.5%	\$115,825	(4.6%)	\$215,532	86.1%	\$223,147	3.5%
November	\$81,541	2.2%	\$95,495	17.1%	\$159,403	66.9%	\$162,971	2.2%
December	\$68,762	6.5%	\$91,320	32.8%	\$143,842	57.5%	\$155,325	8.0%
January	\$81,794	(8.9%)	\$104,821	28.2%	\$182,922	74.5%	\$176,164	(3.7%)
February	\$103,331	0.8%	\$121,205	17.3%	\$172,217	42.1%	\$195,978	13.8%
March	\$131,440	11.8%	\$135,415	3.0%	\$237,086	75.1%	\$245,440	3.5%
April	\$119,066	2.3%	\$134,236	12.7%	\$227,918	69.8%	\$218,780	(4.0%)
May	\$118,881	0.1%	\$137,115	15.3%	\$216,815	58.1%		
June	\$151,992	8.5%	\$155,596	2.4%	\$257,476	65.5%		
July	\$205,911	11.0%	\$216,259	5.0%	\$357,066	65.1%		
August	\$183,437	9.9%	\$202,949	10.6%	\$299,446	47.6%		
September	\$124,269	7.8%	\$139,932	12.6%	\$232,420	66.1%		
Total:	\$1,491,842	6.1%	\$1,650,168	10.6%	\$2,702,143	63.8%	\$1,377,805	2.9%

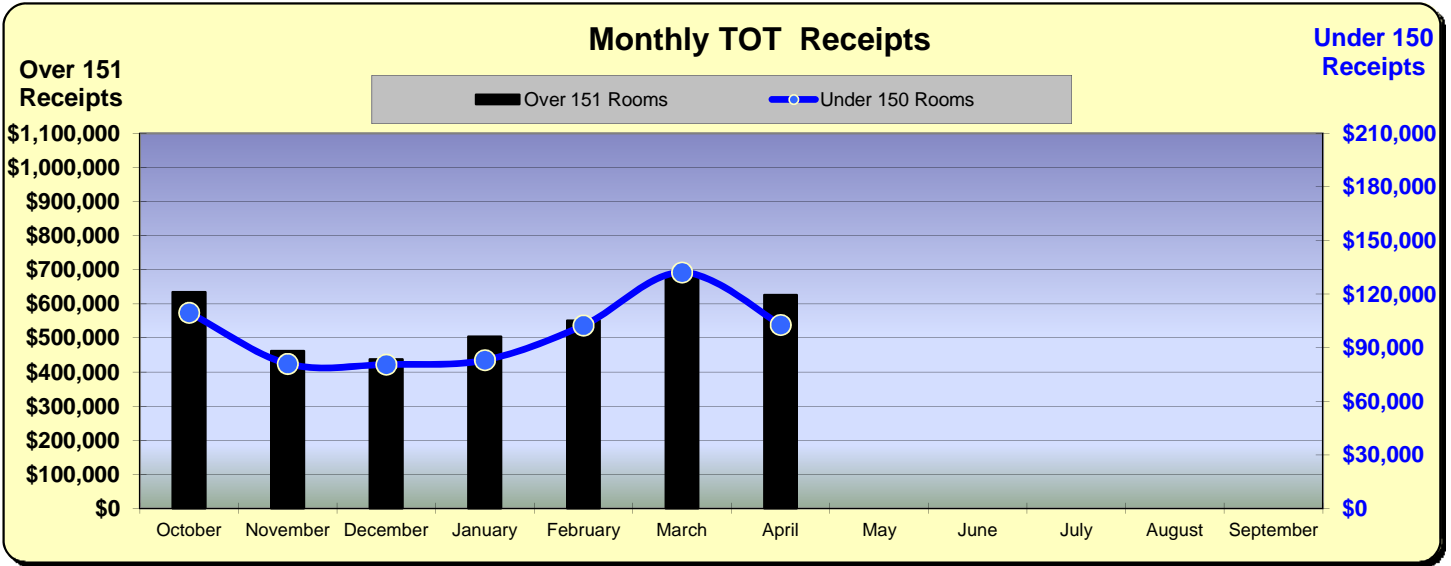
* Effective October 1, 2014, the BID assessment increased from 2% to 3%.

City of Huntington Beach Transient Occupancy Tax Receipts Report Fiscal Year 2015/16

Huntington Beach Hotels 10% Transient Occupancy Tax Receipts Reflecting April Occupancies

Hotels Over 151 Rooms			
Current Month - April 2016			
Last Year	This Year	Change	% Change
\$649,895	\$626,472	(\$23,423)	(3.6%)

Hotels Under 150 Rooms			
Current Month - April 2016			
Last Year	This Year	Change	% Change
\$109,830	\$102,796	(\$7,034)	(6.4%)



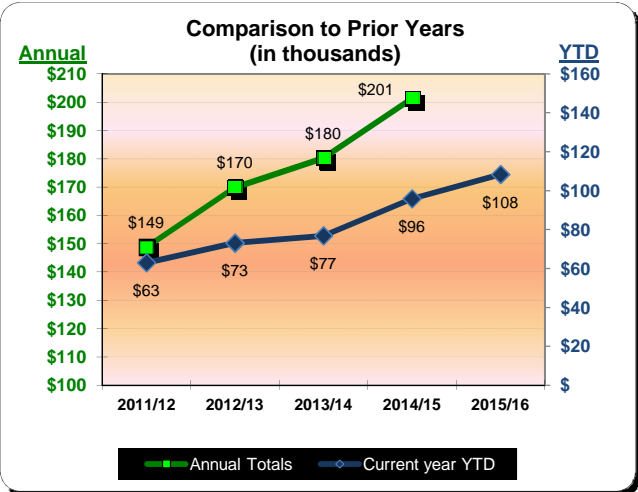
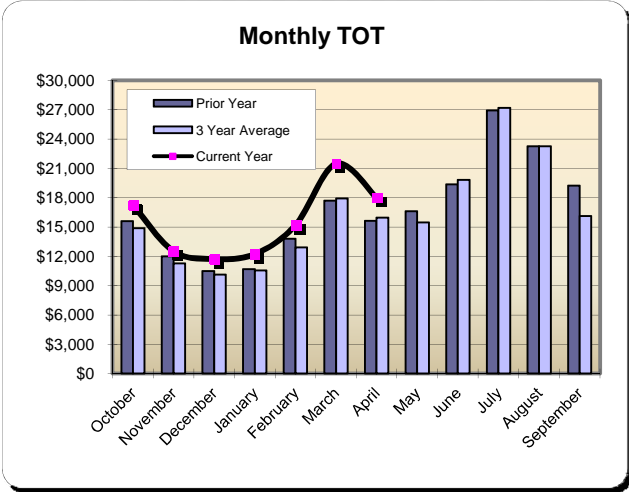
	Fiscal Year 2014/15				Fiscal Year 2015/16			
	Over 151 Rooms	% Change Prior Yr	Under 150 Rooms	% Change Prior Yr	Over 151 Rooms	% Change Prior Yr	Under 150 Rooms	% Change Prior Yr
October	\$620,594	25.5%	\$97,846	15.5%	\$634,210	2.2%	\$109,613	12.0%
November	\$457,014	10.7%	\$74,329	14.9%	\$462,230	1.1%	\$81,007	9.0%
December	\$408,440	4.6%	\$71,030	7.6%	\$437,145	7.0%	\$80,605	13.5%
January	\$532,969	17.3%	\$76,772	10.2%	\$504,120	(5.4%)	\$83,091	8.2%
February	\$495,594	(6.5%)	\$78,466	3.5%	\$550,982	11.2%	\$102,508	30.6%
March	\$668,755	15.6%	\$121,534	23.1%	\$685,971	2.6%	\$132,163	8.8%
April	\$649,895	12.0%	\$109,830	20.7%	\$626,472	(3.6%)	\$102,796	(6.4%)
May	\$608,582	3.2%	\$114,135	19.2%				
June	\$724,357	10.2%	\$133,899	11.1%				
July	\$1,000,628	9.4%	\$189,591	13.9%				
August	\$853,673	(2.1%)	\$144,479	1.3%				
September	\$660,795	9.2%	\$113,941	20.8%				
Total:	\$7,681,295	8.5%	\$1,325,852	13.3%	\$3,901,129	1.8%	\$691,783	9.8%

City of Huntington Beach Transient Occupancy Tax Receipts Report Fiscal Year 2015/16

Sunset Beach Hotels 10% Transient Occupancy Tax Receipts Reflecting April Occupancies

Current Month - April 2016			
Last Year	This Year	Change	% Change
\$15,619	\$17,987	\$2,368	15.2%

Year to Date - April 2016			
Last Year	This Year	Change	% Change
\$95,842	\$108,271	\$12,429	13.0%



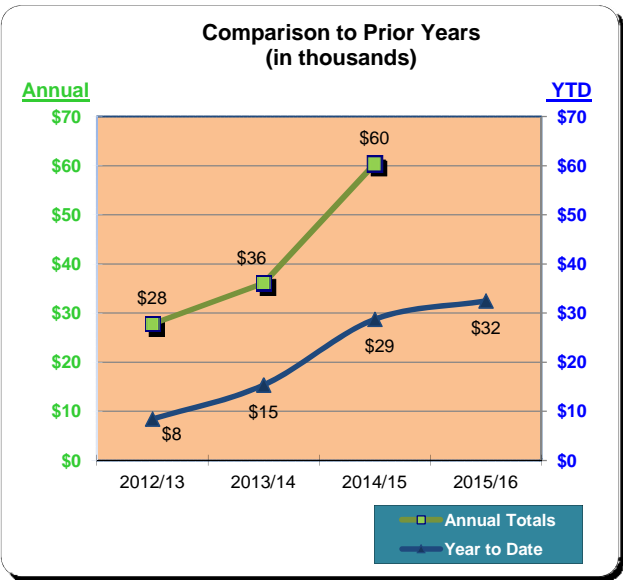
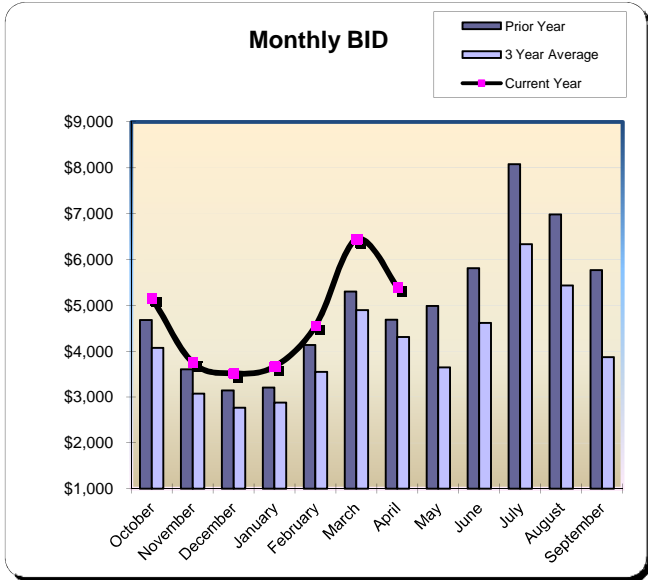
	Fiscal Year 2012/13		Fiscal Year 2013/14		Fiscal Year 2014/15		Fiscal Year 2015/16	
	Actual	% Change Prior Yr	Actual	% Change Prior Yr	Actual	% Change Prior Yr	Actual	% Change Prior Yr
October	\$11,862	(6.9%)	\$11,811	(0.4%)	\$15,596	32.1%	\$17,213	10.4%
November	\$9,364	(27.1%)	\$9,317	(0.5%)	\$12,010	28.9%	\$12,511	4.2%
December	\$7,612	(4.2%)	\$8,147	7.0%	\$10,480	28.6%	\$11,722	11.9%
January	\$8,440	4.5%	\$8,820	4.5%	\$10,681	21.1%	\$12,212	14.3%
February	\$7,447	3.1%	\$9,809	31.7%	\$13,782	40.5%	\$15,160	10.0%
March	\$14,199	25.1%	\$14,656	3.2%	\$17,675	20.6%	\$21,467	21.5%
April	\$14,130	2.1%	\$14,239	0.8%	\$15,619	9.7%	\$17,987	15.2%
May	\$14,132	21.4%	\$15,651	10.8%	\$16,621	6.2%		
June	\$20,567	13.0%	\$19,562	(4.9%)	\$19,367	(1.0%)		
July	\$26,457	13.0%	\$28,179	6.5%	\$26,929	(4.4%)		
August	\$21,721	15.0%	\$24,817	14.3%	\$23,261	(6.3%)		
September	\$13,897	13.0%	\$15,219	9.5%	\$19,231	26.4%		
Total:	<u>\$169,828</u>	7.3%	<u>\$180,227</u>	6.1%	<u>\$201,251</u>	11.7%	<u>\$108,271</u>	13.0%

City of Huntington Beach Transient Occupancy Tax Receipts Report Fiscal Year 2015/16

Sunset Beach Hotels 3% Business Improvement Assessment District Reflecting April Occupancies

Current Month - April 2016			
Last Year	This Year	Change	% Change
\$4,686	\$5,396	\$710	15.2%

* Year to Date - April 2016			
Last Year	This Year	Change	% Change
\$28,752	\$32,481	\$3,729	13.0%



	Fiscal Year 2012/13	Fiscal Year 2013/14		Fiscal Year 2014/15		Fiscal Year 2015/16	
	Actual	Actual	% Change Prior Yr	Actual	% Change Prior Yr	Actual	% Change Prior Yr
October	\$1,124	\$2,362	110.2%	\$4,679	98.1%	\$5,164	10.4%
November	\$1,008	\$1,863	84.9%	\$3,603	93.4%	\$3,753	4.2%
December	\$653	\$1,629	149.4%	\$3,144	92.9%	\$3,517	11.9%
January	\$826	\$1,764	113.5%	\$3,204	81.7%	\$3,664	14.3%
February	\$622	\$1,962	215.5%	\$4,134	110.8%	\$4,548	10.0%
March	\$1,378	\$2,931	112.7%	\$5,302	80.9%	\$6,440	21.5%
April	\$2,826	\$2,848	0.8%	\$4,686	64.5%	\$5,396	15.2%
May	\$2,826	\$3,130	10.8%	\$4,986	59.3%		
June	\$4,113	\$3,912	(4.9%)	\$5,810	48.5%		
July	\$5,291	\$5,636	6.5%	\$8,079	43.3%		
August	\$4,344	\$4,963	14.3%	\$6,978	40.6%		
September	\$2,779	\$3,048	9.7%	\$5,769	89.3%		
Total:	<u>\$27,791</u>	<u>\$36,050</u>	29.7%	<u>\$60,375</u>	67.5%	<u>\$32,481</u>	13.0%

* Effective October 1, 2014, the BID assessment increased from 2% to 3%.