

GO TOPEKA

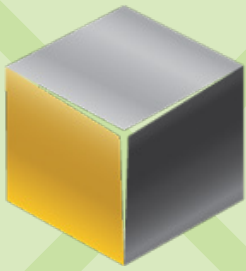
QUARTERLY REPORT

2017 - 3RD QUARTER

PREPARED FOR JEDO

Summary of economic development strides
within Topeka & Shawnee County.





THE PREMIER
ADVISORY GROUP, LLC



PROJECT ANNOUNCEMENT

PROJECT LEAF



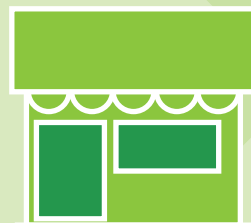
17 **45**
Current jobs New jobs



\$52,000
Average salary



\$2.4M
Total capital investment



Revitalizing a downtown building

PROJECT PIPELINE



35

Projects in pipeline



261

Average number of jobs per project



\$39,900

Average wage per project

BUSINESS DEV. & ATTRACTION



2

New projects



63

Consultant interactions



1

Formal proposal submitted



1

Site visit

BUS. RETENTION & EXPANSION (BRE)



1

New project
Project Smiles
(Manufacturing)
13 Total Projects



\$214 M

Total capital investment for all BRE projects



914

Potential Jobs



40

On-site
business visits
YTD



68

Business
interactions
YTD

On September 21, GO Topeka hosted the 3rd annual Financial Services Summit with more than 180 registered participants.

GO TOPEKA ENTREPRENEURIAL AND MINORITY BUSINESS DEVELOPMENT

SMALL BUSINESS INCENTIVES



43 YTD

Businesses
Receiving Incentives
*(Some received more
than one incentive)*



\$53,707

\$168,530 YTD
Total incentives issued



20 PROSPECTS
In the pipeline



78 YTD
Full time jobs
retained or
created



106 YTD
Part time jobs
retained or
created

FIRST OPPORTUNITY LOAN FUND



\$75,000
This quarter



\$165,000
Three loans in 2017

PROGRAMS & ACTIVITIES



325
Attended programs and
activities this quarter

FASTTRAC GRADUATES



13
Graduates in Spring 2017



14
Graduates Fall 2017

MID AMERICA ANGELS – TOPEKA



**GROWING
STEADILY**



**160
ANGEL
INVESTORS**



**INVESTED IN
14 DIFFERENT
COMPANIES**
(First and second round
funding)

PTAC (PROCUREMENT TECHNICAL ASSISTANCE CENTER)



**CLIENTS
YTD**



**ACTIVE
CLIENTS**



**SHAWNEE
COUNTY
CLIENTS**



CONTRACT AWARDS

\$9.6 M Federal

\$96,743 State and Local

\$1.2 M Shawnee Contract awards (this quarter)

\$450,000 Sub center awards

\$10.1 M YTD

*Our PTAC services area is larger
than Shawnee County.*

WORKFORCE & EDUCATION

TOPEKA STATS

UNEMPLOYMENT RATE – 4.0% (AUGUST 2017)

AVERAGE WAGE – \$43,459 (2ND QUARTER, 2017)

MEDIAN HOUSEHOLD INCOME - \$55,710 (2016 ACS, 1 YEAR ESTIMATES)

FOCUS AREAS



**CRADLE
THROUGH
CAREER**



**DIVERSITY &
INCLUSION**



**EAST TOPEKA
LEARNING
CENTER**



**FUTURE
TALENT
PIPELINE**



**WORK READY
COMMUNITY**

TOP INDUSTRIES WITH UNFILLED POSITIONS



**DISTRIBUTION
& LOGISTICS**



HEALTHCARE



EDUCATION



MANUFACTURING



**FINANCIAL
SERVICES**



**BUILDING
TRADES**

712 INNOVATIONS



127 MEMBERS



**HOME TO
32 SMALL
BUSINESSES**



**26 ENTREPRENEURS
HAVE PRESENTED
AT 1 MILLION CUPS
TOPEKA**

GO TOPEKA BOARD OF DIRECTORS

EXECUTIVE COMMITTEE

WENDY WELLS**Board Chair**

Market President
U.S. Bank

KEITH WARTA**Board Chair - Elect**

CEO
Bartlett & West

SCOTT GALES**Treasurer**

Architect, Principal
Architect One, PA, Inc.

RANDY PETERSON**Secretary**

President & CEO
Stormont Vail Health

SCOTT GRIFFITH**Past Chair**

Community Bank President
INTRUST Bank

KURT KUTA**Non-Officer**

President & CEO
CoreFirst Bank & Trust

ALONZO HARRISON**Non-Officer**

Owner
HDB Construction

MATT PIVARNIK**President and CEO**

GO Topeka

BOARD MEMBERS

DAN BEAL

President
McElroy's, Inc.

BETH ANNE BRANDEN

President
BA Designs, LLC.

ANDY CORBIN

President & CEO
Blue Cross and Blue Shield of
Kansas

NATHAN MORRIS

Owner
Meridian Roofing

JIM PARRISH

President & CEO
Parrish Hotel Corporation

MARK RUELLE

President & CEO
Westar Energy

MICK URBAN

Government Affairs
Kansas Gas Service

DOUG WOLFF

President
Security Benefit Life

DON BEATTY

Worldwide Director, Finance
Hill's Pet Nutrition Inc.

LINDA BRIDEN

CEO
Sunflower Association of
Realtors

JERRY NEY

President & CEO
Aldersgate Village

DAVID SETCHEL

President
St. Francis Health

SHANE SOMMARS

General Manager
Briggs Auto

BRIAN THREADGOLD

Business Manager
IBEW Local No. 226

PAT TOLIN

Project Manager
McPherson Contractors, Inc.

MADAN RATTAN

Managing Partner
Topeka Investment Group

MATT STRATHMAN

President
Strathman Sales Co., Inc.

LIANA ONNEN

Chairperson
Prairie Band Potawatomi
Nation

MARSHA POPE

President
Topeka Community Foundation

ANDREA ENGSTROM

Founder / Marketing Strategist
Bajillion Agency

GLENDA DUBOISE

Regional Community
Organizer
Communities Creating
Opportunity

MEGAN JONES

President
Jones Advisory Group

ZACH AHRENS

President/Publisher
Topeka Capital-Journal

ALLEN MOORE

Director of Engineering
Frito-Lay, Inc.

DAN FOLTZ

President
KBS Constructors, Inc.

DIRECTORS BY VIRTUE OF OFFICE HELD

MAYOR LARRY WOLGAST

City of Topeka

TONY EMERSON

City Councilman
City of Topeka

KEVIN COOK

County Commissioner
Shawnee County

DR. JERRY FARLEY

President
Washburn University

BRETT OETTING

President & CEO
Visit Topeka, Inc.

ERIC JOHNSON

President
MTAA

DOUG GERBER

Interim City Manager
City of Topeka

VINCE FRYE

President & CEO
Downtown Topeka, Inc.

JANET STANEK

Chamber Chair
Stormont Vail Health

GO TOPEKA STAFF



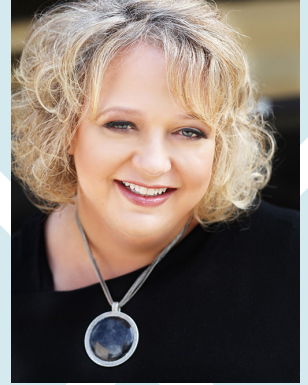
Matt Pivarnik
President and CEO



Molly Howey
SVP - Economic
Development



**Glenda
Washington**
SVP - EMBD



**Barbara
Stapleton**
VP - Workforce &
Education



Jackie Steele
VP - Business Retention &
Expansion



Matt Lara
Digital Communications
Manager



Freddy Mawyin
Research Manager



**Mary Ann
Anderson**
Assistant Manager -
EMBD



Mary Hill
Executive Assistant

GO TOPEKA MISSION

GO Topeka's mission is to create exceptional opportunities for growth, prosperity, innovation, and economic diversity and vibrancy that positively impact current and future citizens of Topeka and Shawnee County by attracting world-class companies, providing existing companies with the knowledge and resources to reach their highest potential, and cultivating entrepreneurial development and growth.