

FALL 2019

# MONTCO

## GOLF

### FITNESS & WELLNESS

Tips to Make You  
Feel Better On  
& Off the Course

### HISTORY

Montgomery  
County  
– Unrivaled Golf  
Tradition

### TOURNAMENTS

Valley Forge  
Invitational Returns to  
Montgomery County



[MONTCOGOLF.COM](http://MONTCOGOLF.COM)



VALLEY FORGE  
& MONTGOMERY COUNTY, PA





**BLUESTONE COUNTRY CLUB** WILL HOST THE  
VALLEY FORGE TOURISM AND CONVENTION  
BOARD'S **5TH ANNUAL MONTCO GOLF CLASSIC**  
IN 2020. STAY TUNED FOR DETAILS!

Situated 20 miles north of Center City and just a short drive from Plymouth Meeting, Bluestone Country Club offers a setting that is close at hand, but feels like a world away.

From our golf course's manicured greens to our newly renovated Country House, Bluestone is the perfect location for food, fellowship and life's milestones.

Let our championship-caliber golf course, set in the rolling meadows of Montgomery County, entice you to spend the day. Perfect your game with our PGA professionals and excellent practice facilities, including a large driving range and separate chipping and putting areas.

**711 Boehms Church Rd  
Blue Bell, PA 19422**

**bluestonecc.com**



*Raising Spirits Since 1746*

**SMALL PLATES. CRAFT BEERS. LEGENDARY HOSPITALITY.  
BANQUET & PRIVATE DINING. SUNDAY BRUNCH. HAPPY HOUR.**



★ ★ ★  
**BLACK POWDER  
TAVERN**  
CRAFT AMERICAN FARE

1164 Valley Forge Road • Wayne, Pennsylvania 19087 • (610) 293-9333

**BLACKPOWDERTAVERN.COM**

Less than 1 mile from Valley Forge National Historical Park



# Hello Golfers!



On behalf of the Valley Forge Tourism & Convention Board, welcome to Montgomery County! We hope that whatever the reason for your visit – a conference, or a well-deserved vacation – you’ll have time for a round.

Montco is home to more than 50 of the most historic, beautiful, challenging, and best public courses and private clubs in the Northeast. That’s **300,000 yards to play!**

Let us be your personal caddy for finding a tee that fits your skill level, or even a country club wedding. In this guide, you’ll see our rich golf history, recommendations from local pros and highlights of some of our premier courses.

Plus, check out all that Montco has to offer from vibrant arts, culture, and nightlife to adventure, **1,600 restaurants, 79 hotels**, world-class shopping, historical sites, tons of family-friendly attractions, and almost **100 miles of trails**.

Be sure to **visit MontcoGolf.com** for even more about golfing in Montgomery County. In the meantime, here’s to sunny days and clear skies!

See you on the fairway!

**Mike Bowman**  
President & CEO



## IN THIS ISSUE

**06** HISTORY:  
Montgomery County  
– Unrivaled Golf Tradition

**16** INTERVIEW:  
Get to Know a Pro:  
Linda Nevatt

**18** TOURNAMENTS:  
Valley Forge Invitational Recap

**24** OUR COURSES:  
Montco Has a Course  
for Everyone

**26** INTERVIEW:  
Ashley Grier on What It Takes  
to Become a Champion

**30** LIFESTYLE:  
103-Year-Old Golfer  
is Still Swinging

**32** PRO TIP:  
10 Fitness and Wellness  
Tips for Golfers

**33** PRO TIP:  
Simple Ways to Improve  
Your Golf Game at Home

**34** TOURNAMENTS:  
Aronimink Golf Club to Host  
2020 KPMG Women's PGA  
Championship

**38** LISTINGS:  
All the Courses, Hotels,  
Restaurants, and Bars  
Montco Has to Offer



Green Valley Country Club

# It's Not Just The Golf, But The Golf Tradition That Makes Montgomery County Stand Alone

BY TONY LEODORA

FOR YEARS, MONTGOMERY COUNTY  
HAS BEEN TOUTED AS THE GOLF  
CAPITAL OF PENNSYLVANIA.



Philadelphia Country Club

The sheer number of golf courses is enough to substantiate that claim. No other county comes close. But it's not just the quantity of the golf courses that raises Montgomery County to the top of the list; there is also the quality. When Golfweek first came out with the list of the Top 100 Classic Courses in America – built before 1962 – a number of Montgomery County courses were on the list. Included were: Philadelphia Cricket Club, Philadelphia Country Club, Manufacturers Golf and Country Club, and Huntingdon Valley Country

Club. Plus, it should be noted that the venerable Merion Golf Club, ranked No. 7, literally sits right on the border of Montgomery County. Add names like Whitemarsh Valley CC and the North Course at Philmont CC to the national hierarchy.

If those opinions from the experts are not enough to convince the golf world that Montgomery County holds a very special place among the elite destinations in America, then it is time to factor in an intangible.



## TRADITION

The tradition that pervades the long history of golf in Montgomery County is so impressive that it deserves a bow of the head – if not a genuflection – whenever it is mentioned. The late, great James Finegan – one of golf’s most revered historians and a longtime resident of Montgomery County – once said in a radio interview, “When I drive around Montgomery County, I marvel at what I see. It’s almost as if I am passing through the Sistine Chapel of golf.”

Who could argue with such a respected authority? He might as well have claimed that holy water runs through the Wissahickon Creek as it travels through the golf courses at

Philadelphia Cricket Club, Sandy Run Country Club or LuLu Country Club. Or that the smell of sacred incense is emitted from the chimneys of the old stone clubhouses at Manufacturers or Bluestone Country Club. Or that Jesus has been seen walking across the pond at Spring-Ford Country Club.

The great tradition of golf in Montgomery County did not come about by accident. A lot of factors went into building the lore of one of America’s great golf regions.

To fully understand the tradition of Montgomery County golf, it is necessary to explore a number of different categories that led to legendary status.



“When I drive around Montgomery County, I marvel at what I see. It’s almost as if I am passing through the Sistine Chapel of golf.”

- James Finegan, Golf Historian

## THE CHAMPIONS

The two most famous champions tied to Montgomery County have vastly different but intriguing stories. The first was John McDermott, who was born in West Philadelphia but lived the major part of his life in Montgomery County – in an insane asylum.

McDermott became a caddy and a golfer of amazing accomplishment at an early age. He launched a competitive career and became the first American born golfer and the youngest golfer to win the U.S. Open when he was 19 years old in 1911. To prove he was no fluke, he repeated as the national champion the next year.



Jim Barnes



John McDermott

He finished fifth in the 1913 U.S. Open, an event won by Francis Ouimet and immortalized in the Hollywood movie, “The Greatest Game Ever Played.” Shortly after, McDermott’s career went downhill. He lost money on a number of investments. He traveled abroad to play in the 1914 Open Championship but his voyage by sea got him there too late to compete.

On the return voyage, his ship collided with another vessel. It had to return to port and the dangerous incident had a serious effect upon him. He became

mentally unstable and was diagnosed with schizophrenia. He spent the rest of his life, until he died at age 81, in the Norristown State Mental Hospital.

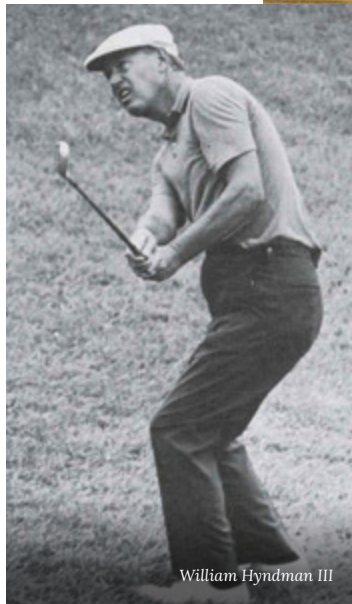
There he played on a rudimentary four-hole golf course that had been constructed for the former champion. On weekends his sisters would come to see him and take him on trips to visit other golf courses in the area.

“I first met him in 1966 when I became the head pro at St. Davids,” recalls Philadelphia PGA historian Pete Trenham, during a television interview. “He would come in for regular visits and we would chat.

One day we got talking about Bobby Jones and he said, ‘I saw him at Merion the other day and I think he’s going to be pretty good.’ This, of course, was long after Jones was dead. Johnny had no idea what year it was.”

The second champion with ties to Montgomery County also had an interesting story. Jim Barnes, a tall Englishman with an elegant, long swing, became head professional at Whitmarsh Valley Country Club. He immediately created quite a stir.





At age 30, in the first PGA Championship in 1916, Barnes rose to the top of the golf world with a one-up match play victory over Jock Hutchinson in the final. In 1919 he won another PGA Championship.

Perhaps his greatest triumph came in the 1921 U.S. Open when he defeated the legendary Walter Hagen by nine shots. He then went back to his homeland in 1925 and won The Open Championship. He also won the Western Open three times and the North-South Open two times, both events considered to be major championships in those days.

On the amateur side, two golfers who played out of Huntingdon Valley Country Club rose to national prominence. William Hyndman III was born in Glenside and began making his mark in the mid-1950s. He was runnerup in the 1955 U.S. Amateur and again finished second in the 1959, 1969, and 1970 British Amateurs.

On the senior side he had more success, twice winning the U.S. Senior Amateur in 1973 and 1983. He also played on five Walker Cup teams.

Another player who originally came out of Huntingdon Valley CC is O. Gordon Brewer.

He started to gain recognition in 1967 when he won the Pennsylvania Amateur title. He advanced to national tournaments and eventually competed in 40 USGA Championships, beginning with the 1968 U.S. Amateur. One of the most memorable competitions was the 1985 U.S. Mid-Amateur, where he finished runnerup to fellow competitor and friend, Jay Sigel. It was a meeting of two of the greatest amateurs in Pennsylvania history.

His longtime volunteer work in many areas of golf finally led Brewer to his highest honor in 2009. He was chosen to receive the United States Golf Association's Bobby Jones Award.



# THE WINNING WOMEN OF MONTCO



In 1962, 1972, and 1987, the Senior Women's Amateur was held at Manufacturers. In 1980 and 1997, the Women's Amateur Public Links was contested at the recently closed Center Square Country Club. Gulph Mills Country Club hosted the 1954 Girls' Junior and the 1983 Senior Women's Amateur. Sunnysbrook Country Club was the site of both the 1971 Senior Amateur and the 1978 Women's Amateur. Whitemarsh Valley hosted the 1934 Women's Amateur. In addition to the 1939 Open, Philadelphia Country Club played host to three other championships – the 1899 and 2003 Women's Amateur and the 1949 Girls' Junior.

## THE CHAMPIONSHIPS

Although the 1907 and 1910 U.S. Open Championships were played at Philadelphia Cricket Club, the competition took place on the club's St. Martin's Course – just inside the Philadelphia city limits. In 1934 the first of five U.S. Opens was played at Merion, with pieces of the property sneaking across the Montgomery County border.

But the first U.S. Open to be played on a course entirely within the county line was the infamous 1939 championship at Philadelphia Country Club. Byron Nelson survived two additional rounds to break a tie and emerge with the title. In that same Open the legendary Sam Snead added to golf's painful lore by leading the tournament in the first two rounds, only to make an unfathomable triple-bogey on the 72nd hole and slump into a fifth place finish. Snead finished second in the U.S. Open four more times and, as a result, never completed the career grand slam. No loss was ever more painful than his collapse in 1939.

The U.S. Amateur Championship was played at Merion six times, including the historic 1930 championship when Bobby Jones completed his epic Grand Slam with an eight and seven rout of Eugene Homans. Other USGA Championships have been no stranger to Montgomery County.

## 1934

First of five U.S.  
Opens were played  
at Merion

## 1939

Legendary Sam Snead  
fails to complete his  
career Grand Slam

## 1930

Bobby Jones  
completed his epic  
Grand Slam

## THE PROS

While Montgomery County has not produced many professional champions – a la the western part of the state and its favorite son, Arnold Palmer – the county can be credited with a couple of golf pros who shaped the nation's golf scene.

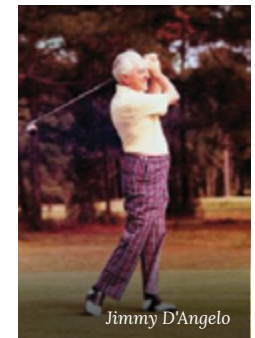
The first was Jimmy D'Angelo, the son of Italian immigrants, who was born on a farm in Jenkintown. He became a caddy at Huntingdon Valley and began working his way into the professional ranks. Soon he was one of the most respected club pros in the area and was elected National Secretary of the PGA of America – a precursor to becoming president. His specialty was promoting Philadelphia golf. In 1942, he gave America's first televised golf lessons.

Then, fate stepped in. In his early years, D'Angelo worked during the winter for Robert White, the first president of the PGA of America, at the Ocean Forest Golf Club in Myrtle Beach. His personality made him the perfect person to build the membership at the new Dunes Golf and Beach Club – Myrtle Beach's second golf course and a Robert Trent Jones-designed masterpiece. He made the move to Myrtle Beach in 1948.

Fifty years later, as he predicted, he oversaw the construction of the 100th golf course in the thriving beach area – and this master promoter and ambassador of the game earned the title “The Godfather of Golf in Myrtle Beach.”

Many years after D'Angelo, another ebullient character, came out of Huntingdon Valley Country Club. Jack Connelly was born in Maryland and grew up in Deptford, NJ, but came to Huntingdon Valley after a two-year stint in the U.S. Army, including a year in Vietnam. He played briefly on the PGA Tour in 1972 but became head pro at Huntingdon Valley in 1975. What followed was a storied career as a club pro and national figure.

A fine player and four-time winner of the Player of the Year honor in the Philadelphia Section, Connelly always had his eye on the national golf politics scene. After working his way up the chain of command, he was elected 32nd president of the PGA of America in 2000. Some of his greatest work was in the troubling post-9/11 years, when his solid leadership was desperately needed.



Jimmy D'Angelo



Jack Connelly



10th Hole at Whitemarsh Valley CC, designed by George Thomas



Tom Fazio

#### THE ARCHITECTS

In no area did Montgomery County natives do more to shape the game of golf than in golf course architecture.

The Philadelphia School of Golf Architecture dominated the early 1900s and produced many of America's greatest architects and golf courses. The names of A.W. Tillinghast, William Flynn, Hugh Wilson and Franklin Meehan hold legendary status for their work in designing golf courses.

Another from that same era was George Thomas, who lived in Whitemarsh Township and left his mark on the area with his creation of Whitemarsh Valley CC. In 1919, he moved to California and designed a collection of respected courses – including famed Riviera CC, plus Bel Air, Ojai Valley, and the Los Angeles CC North Course.

It was not until the 1960s that a second wave of architects from Montgomery County began to change the golf world – in a major way.

George Fazio, a Norristown native, was a player of limited success on the PGA Tour, until he

became entangled with the great Ben Hogan in a memorable duel during the U.S. Open at Merion in 1950. After finishing in a three-way tie, that also included Lloyd Mangrum, Fazio lost in an 18-hole playoff the next day.

Shortly thereafter, Fazio embarked on a golf course architecture career – the first PGA Tour professional to go into the design business.

He designed a number of noted courses in the Greater Philadelphia area – Waynesborough, Squires, Downingtown, and Moselem Springs – before branching out nationally.

Some of his most noted work around the country includes Jupiter Hills in Florida, Butler National in Illinois, Edgewood Tahoe in Nevada, The National Golf Club of Canada, and even a tropical twist at Cariari in Costa Rica.

But his greatest achievement in golf came when he hired his 18-year-old nephew, Tom Fazio, and put him to work on the design crew.

Tom Fazio also was born in Norristown but moved with his family to Lansdale. He had the golf design bug from an early age, and the creative eye of an artist.

“If he did win, he might have become more famous as a player and maybe never gotten into the golf course design business.”

- Tom Fazio, on his uncle, George Fazio's, career

After working for a number of years until his uncle retired, Fazio began to make a name for himself. Today he stands, without argument, as the greatest golf course architect of all time.

While some might want to argue a subjective statement such as that, there can be no argument about the facts. Golf Digest came out with its list of the Top 200 Golf Courses in America. Tom Fazio has his name attached to 34 of the courses. The next closest architect, Donald Ross, has 11 on the list.

“I guess I should say a prayer of thanks every day that my uncle didn't win that U.S. Open against Ben Hogan,” laughs Tom Fazio. “If he did, he might have become more famous as a player and maybe never gotten into the golf course design business.”

Thankfully for the rest of the golf world, George Fazio was able to set the stage for Tom Fazio. The result is Montgomery County's greatest contribution to the golf landscape.

On a much smaller level, another Montgomery County native has been involved in golf course architecture in recent years. Ed Shearon grew up in the county and was inspired by all of the golf tradition.



Ed Shearon

He, too, began designing courses, producing three notable layouts: Raven's Claw GC in Montgomery County, RiverWinds GC in West Deptford, NJ, and Vineyard Golf at Renault Winery near Atlantic City. The only thing that has kept him from continuing to produce new courses is the downturn in the golf industry.

More than 120 years of golf tradition in Montgomery County has resulted in a wave of success that positively affected the game across the country... and around the world.

To borrow a phrase, "it is a tradition unlike any other."





## Get to Know a Pro: Linda Nevatt

*Former LPGA Symetra Tour Player*  
BY SAMANTHA CUMMONS



Guests can enjoy the open-air pavilion during summer months at the ACE Club and food from Garces Events.

Linda Nevatt has been a member of the LPGA for more than 25 years and a member of the PGA since 2012. Today, she is the Director of Golf at The ACE Club in Lafayette Hill, where she brings a wealth of experience and passion for the game to all her students. Montco Golf sat down with Nevatt to talk about her love of golf, her time on the Symetra Tour and what makes Montgomery County a premier golf destination.



The ACE Club was founded in 2003 and designed by Gary Player.



The ACE Club's practice facility includes a two-tiered driving range, six target greens, and an oversized putting green.

### **Q: What started your love for golf?**

**A:** I've been playing golf for over 50 years. I'm originally from Elmira, NY, and when I was just seven years old, I got a junior golf membership for \$10 at Mark Twain Golf Course. I'm one of seven children and growing up, my siblings and I would shovel driveways from 6:00am to noon for \$.50. I would take that money and use it for my public course membership during golf season. It was something everyone in the neighborhood did. We just enjoyed it. Sports were an avenue to get through school. When it was time for me to go to college, I originally wanted to play basketball. However, I visited Florida State University, enrolled in classes, and became a member of the Women's Golf Team.

### **Q: What was your experience like playing in the Symetra Tour (Mini-tour Group 4, Eloise Trainer)?**

**A:** I enjoyed it. The people I met – we are friends for life. I see them once a year. I played for a year and a half up and down the west coast, it was a great experience. For me personally, it was a little too nerve-racking.

It's very different now, but back in the day, we'd travel with a friend cross-country, and stay at motel 6 along the way. It was a journey. As I said before, golf is a personal game; it's not the end-all.

### **Q: Why is Montgomery County a premier golf destination?**

**A:** I've played a lot of golf. There are several great courses in the area and I believe ours stands up to them. Every hole is different, nothing looks like the last hole you played, it's pretty spread out. The course is a great challenge, great length, greens are huge. I certainly don't take it for granted.

What we have is special, especially just right outside the city limits. Just about a mile from the city line.

The ACE Club is a world-class golf course. Nestled into the rolling Pennsylvania landscape, its proximity to Philadelphia makes it accessible for business outings. With multiple tees to accommodate golfers of every skill level, The ACE Club is the perfect place to unwind and conduct business at the same time.

### **Q: Any advice for someone just getting started in the sport?**

**A:** JUST ENJOY IT! There are so many people trying to better their game. Remember, it doesn't have to be better than the next person, just better for you. It's not the end-all.





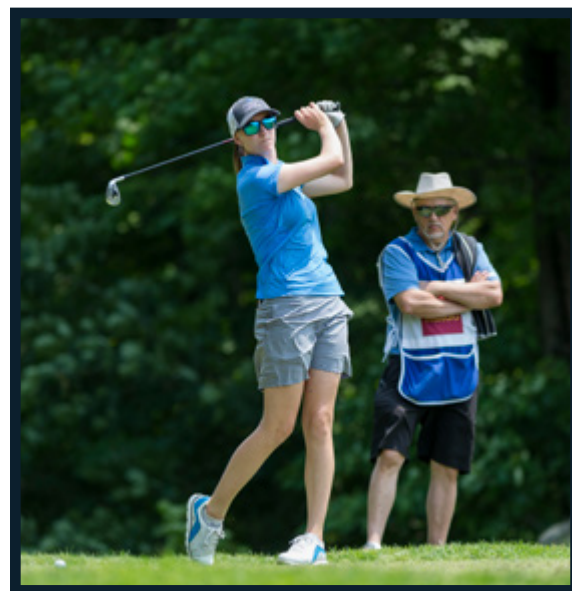
## Valley Forge Invitational Recap



The Valley Forge Invitational, an LPGA Symetra Tour event, brought women's professional golf to Montgomery County May 28-June 2. Held at Raven's Claw Golf Club in Pottstown, Pa., the Valley Forge Invitational was one of 24 tournament locations on the 2019 Symetra Tour schedule. Hundreds of golf fans lined up on the greens to watch women's professional golf throughout tournament week. Min Lee of Taiwan won the Invitational in a sudden-death playoff.





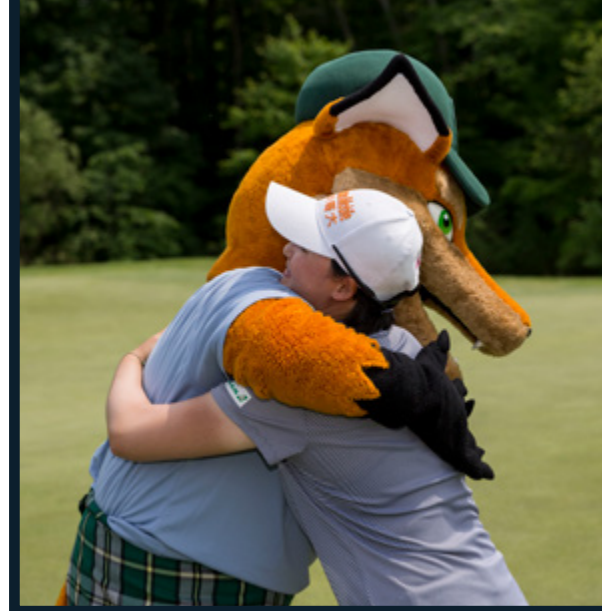


  
**SYMETRA<sup>®</sup>**  
**TOUR**  
ROAD TO THE LPGA

  
**VALLEY FORGE**  
INVITATIONAL









# Montco Has a Course for Everyone

Experience the history, prestige, and excitement of Montco Golf with courses that challenge every skill level.

**300K**

Yards of Golf

**53**

Courses

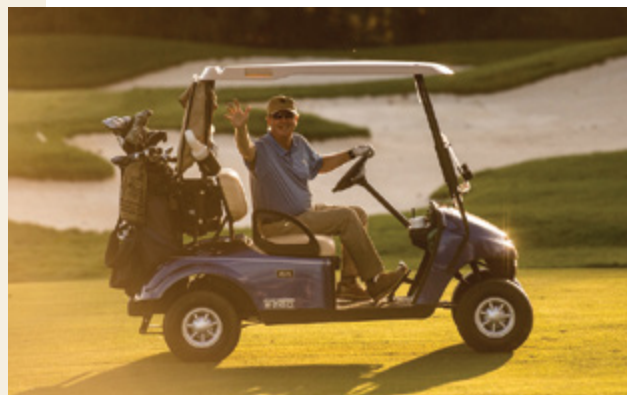
Something to satisfy  
every golfer's palette



## LOG ON, LEARN MORE

View our courses and plan  
your Montgomery County  
golf getaway today.

**MONTCOGOLF.COM**

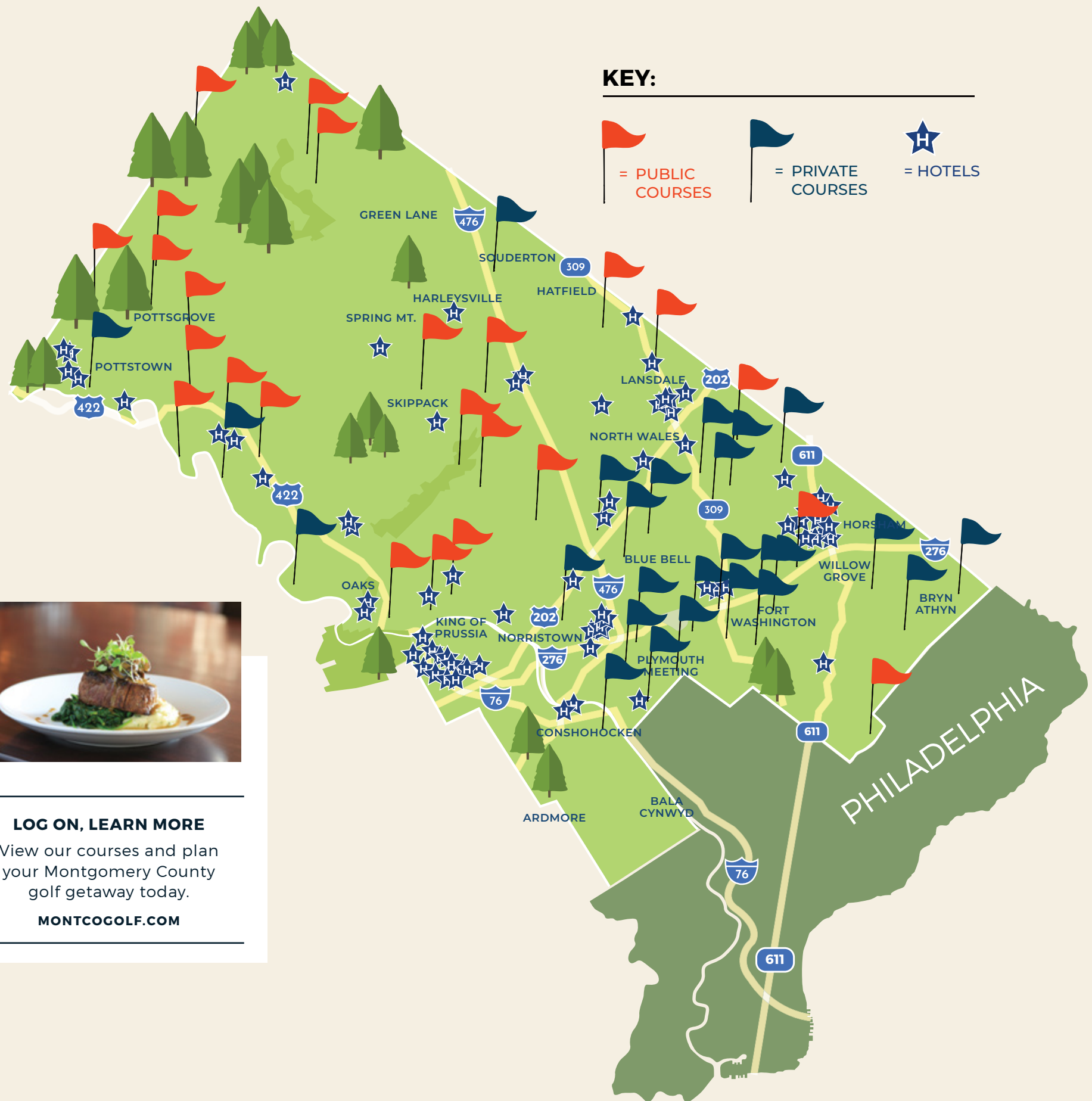


## KEY:

 = PUBLIC COURSES

 = PRIVATE COURSES

 = HOTELS





# Ashley Grier on What It Takes to Become a Champion

BY SAMANTHA CUMMONS



Grier competed in the 2018 KPMG Women's PGA Championship in Kildeer, Illinois.

Ashley Grier, who played for five years on the LPGA Futures (now Symetra) Tour, became the first female PGA professional in the Philadelphia section's 95-year history to win a points event. She competed in the second annual Valley Forge Invitational at Raven's Claw Golf Club in Pottstown, PA this past spring. Montco Golf sat down with Grier to discuss golf in Montgomery County, the biggest moments of her career, and what it takes to become a champion.



**Q:** Tell me a little bit about your background and how you got started playing golf?

**A:** My Dad is a PGA professional and bought a golf center when I was six. Our house was on the property, so I literally had a miniature golf, driving range, and an 18-hole, par-3 course in my front yard.

**Q:** Could you offer any tips and tricks for someone just getting started in the sport?

**A:** I would advise to take a few lessons to start so that you can get the basics and have good fundamentals. If you set up poorly and are unsure of what you are doing, you will create bad habits. Then, after a few lessons, try to find some time to go to a driving range and figure out your swing and how you can make contact. Also, don't neglect your short-game. We all want to drive the ball as far as possible, but chipping and putting are equally important. Improving that area of your game is the easiest way to lower your scores.



"It's tough to find a place that has so many good golf courses in such a tight area than what we have here in Montgomery County."

- Ashley Grier, Professional Golfer

ASHLEY GRIER

Prior to her arrival in the Philadelphia PGA, Grier was a four-time Middle Atlantic PGA Women's Player of the Year.

**Q:** What so far is your most memorable shot?

**A:** My most memorable shot would be in the 2014 Maryland Women's Open at Congressional CC in DC. I was in a playoff for the win with two other women. On the first playoff hole, (also the first hole on the golf course) I had a 50-foot shot from just into the first cut of the rough. It was straight downhill, and I had a huge gallery behind me watching and I remember telling my caddy that I'm going to putt this because I was nervous and didn't want to do anything stupid. I ended up putting it in for the win. It was pretty cool.

**Q:** How do you keep yourself calm and focused in that type of environment?

**A:** Mental practice. The biggest thing is, you know, you hit this shot a million times. A drive is still a drive whether you're by yourself or in front of a crowd. It's important to have a pre-shot routine. Then, when it's time to hit, you go into your routine of what you've done a thousand times; it's almost automatic. It's harder to do than it sounds.

**Q:** What was it like to become the first female PGA professional in the Philadelphia section's 95-year history to win a points event?

**A:** I was extremely excited to win. The Philadelphia PGA is a very competitive section with a ton of really good players. There aren't usually many women in the field, and it can sometimes be intimidating if the guys aren't used to seeing females playing against them. So that made is especially nice to win this event and establish some respect with the rest of the players and prove to myself that I can be a competitive player in this section.

**Q:** Anything you'd like to add about why Montgomery County is a premier place for golf?

**A:** It's tough to find a place that has so many good golf courses in such a tight area than what we have here in Montgomery County. The golf tradition here is also about as good as you'll find anywhere else.



Grier was the first woman to win a Philadelphia Section PGA points event.



# Still Swinging

Bobbie Rose has been playing golf for more than 70 years – and she's still going strong.



“The nice thing is that we get to enjoy it as a family.”

- **Bobbie Rose**, 103 year-old golfer

The first time Bobbie Rose picked up a golf club, she was 32. Her son, Mike, was just born, and when she swung, something just clicked. Now, a 103-year-old grandmother and great-grandmother, the Meadowbrook resident is still swinging.

“That was really the start of something,” said Bobbie, who plays at Philmont Country Club. “I didn’t know how to play, but I just knew that this would be a game I’d play forever. I still have the urge to play. It’s never left me.”

A Temple University graduate, she taught physical education in her home school district of Cheltenham. Bobbie was always an athlete, from playing multiple sports in high school to later playing hockey, baseball, and even swimming to becoming a Philadelphia badminton champion, and playing tennis until she was 81.

By 90, she’d won dozens of tournaments with her champion player children, Bonnie and Mike, and became an honorary member of the Women’s Golf Association of Philadelphia. At 92, she beat out 65-year-olds for class champ at a senior event and shot under her age five times. By 98, she was inducted into the Philadelphia Jewish Sports Hall of Fame.

“Mom’s a great athlete,” said Bobbie’s son, Mike Rose of GREAT GOLF Magazine and 97.5 The Fanatic. “She’s a quick study. There’s not a sport she didn’t play. I wish I could’ve seen her play when she was younger.” But, luckily, he still gets to see her play now.

“The nice thing is that we get to enjoy it as a family,” Bobbie said. “That’s the most important thing, keeping the family together, even from afar. We’re growing up together. How many are fortunate enough to grow up with their children?”

Mike joked, “Mom’s growing younger, I’m growing older, and we meet in the middle.”

An avid hiker, Bobbie said she just loves walking the course, being outside on the range, and maybe even still giving a pointer or two. She also still hosts and helps prepare holiday meals at her home, which is filled with her own original artwork from welding, wood, and clay, to copper and stone.

“Who knew I’d live to be 103!” Bobbie said. “Nobody knows the answer to that question. I have no secrets other than being physically active my whole life and loving every minute of it. I constantly challenge myself. If I can’t do it, I try to find a way to work to get better. That’s my mental aspect. But, I don’t think about age in anything I do. It doesn’t define me. They’re just numbers.”



# 10 Fitness and Wellness Tips for Golfers

Part of what makes golf such a wonderful game is that it's an excellent workout – both in mind and body – that you can play at any age.

If you want to take your game to the next level, however, you should incorporate these 10 easy-to-follow fitness & wellness tips into your weekly workout regimen. We guarantee that you will feel better on and off the course.

## 1 TAKE A YOGA CLASS

Yoga will give you flexibility, mental focus, and a strong core: all necessities to a good golf game.

## 2 USE THERAPEUTIC BANDS

Therapeutic bands are a great way to stretch and strengthen your shoulders, hips, and glutes, ensuring you maintain a stable base throughout your swing.

## 3 STRENGTHEN YOUR GRIP

There are many ways to strengthen your grip, from stress-release balls to exercise grippers. Daily grip exercises will give you greater control of the club head and more confidence in your follow-through.

## 4 WALK ALL 18 HOLES

Simply playing golf and walking 18 holes is an excellent workout for people of all ages. You might also be surprised to know that walking a course is often faster than riding in a cart.

## 5 SWAP THE CHAIR FOR AN EXERCISE BALL

Your golf swing is all about balance, which is why you should swap your chair out for an exercise ball at work to improve your stability and core strength.

## 6 WORK THOSE GLUTES

Strong gluteal muscles are key to a good golf swing, providing stabilization and mobility to the lower body. Anything you can do to work your glutes, from lunges to side step-ups will ensure a more stable base as you transfer energy through your downswing.

## 7 STRETCH BEFORE AND AFTER EVERY ROUND

Stretching is one of the most important things you can do to not only improve your stamina, reduce cramps, and ensure a more fluid golf swing, but to prevent injuries as well. Make sure to also pick up a foam roller and massage your muscles before and after every round.

## 8 HIT THE GYM

There's no way around it: you've got to hit the gym. Cardio exercise and strength training will keep you less winded during your 18-hole round and will make you feel better off the course as well.

## 9 TRACK YOUR CALORIES

There are many easy-to-use apps that you can download to track your calories, monitor your heart rate, and set goals to keep you motivated. Whoever said exercising isn't fun has never played golf.

## 10 GET YOUR HEAD IN THE GAME

Golf is game that requires serious mental focus. Commit to your shot. Follow through. But most importantly: accept the results. Don't let one bad shot turn into a bad round. Keep your eye on the prize and have fun!

## Simple Ways to Improve Your Golf Game at Home

### TEST YOUR SKILLS ON TURF

Invest in a putting mat. Many of today's putting mats recreate the conditions of the green in a way that makes practicing at home more than just a novelty. Test your newfound putting skills at many of Montgomery County's 54 incredible golf courses.

### SWING LIKE NOBODY'S WATCHING

Practicing your swing in front of the mirror is a cost-effective and efficient way to improve your golf game. Is your stance too wide? How is your posture? Do your hands make it back to their original position at the moment when you would strike the ball? Get yourself looking good in the mirror and you will see results on the golf course.

### INVEST IN A GOLF SIMULATOR

Golf simulators recreate the environment of a golf course, allowing you to practice and even analyze your swing when you can't make it out to the links. Many simulators are available across a wide range of sizes and budgets, so it's easy to find one for just about any space.

### BUILD YOUR STRENGTH WITH A WEIGHTED CLUB

Practicing your swing with a weighted club will help you build strength and flexibility, contributing to an increase in club speed – potentially adding 20 yards to your tee shot.

### SIT BACK, RELAX, AND WATCH GOLF

Pay attention to what the pros do, from their pre-shot routine to how they adjust in the face of adversity. And if you think watching golf on TV is beneficial, you really owe it yourself to check out The Valley Forge Invitational, a free-to-attend LPGA Symetra Tour Event, coming to Raven's Claw Golf Course on Friday, May 30th through Sunday, June 2nd.



# Aronimink Golf Club to Host 2020 KPMG Women's PGA Championship

This Major Championship boasts one of the strongest fields and offers a purse among the highest in women's golf.

The PGA of America is bringing the KPMG Women's PGA Championship to Aronimink Golf Club in June of 2020. The KPMG Women's PGA Championship, one of five major golf championships on the LPGA Tour schedule, continues the rich tradition of the LPGA Championship.







“We couldn’t be more thrilled to bring this world-class major golf championship to Aronimink and the Philadelphia region.”

- Jackie Endsley, Championship Director

This will mark Aronimink’s first time hosting the KPMG Women’s PGA Championship, though this is not the first time that the historic club has hosted a major golf championship. Founded in 1896, Aronimink’s prestigious tournament history includes the 1962 PGA Championship, 2003 Senior PGA Championship, 2010 and 2011 AT&T National Championship, and 2018 BMW Championship. Recently restored by architect Gil Hanse, the course is currently ranked No. 85 on Golf Digest’s list of “America’s 100 Greatest Golf Courses.”



“Aronimink’s rich championship history and the PGA of America’s commitment to bringing this major championship to the same venues as the PGA Championship, made Aronimink an easy choice. The course offers a unique test of golf and will be a spectacular stage for the 2020 KPMG Women’s PGA Championship,” said Endsley.

For more PGA championship information please visit, [www.KPMGWomensPGA.com](http://www.KPMGWomensPGA.com)

A collaboration between the PGA of America, KPMG and the LPGA Tour, this Major Championship boasts one of the strongest fields in women’s golf and features 156 professionals from over 50 countries. Broadcast in partnership with the NBC and Golf Channel, the Championship offers a purse among the highest in women’s golf. The event combines the annual major golf championship with the KPMG Women’s Leadership Summit and an ongoing charitable initiative, the KPMG Future Leaders Program – all focused on the development, advancement, and empowerment of women on and off the golf course.

“We couldn’t be more thrilled to bring this world-class major golf championship to Aronimink and the Philadelphia region,” said Championship Director, Jackie Endsley. “Philadelphia golf fans are second to none and we are excited to have them join us in the excitement next summer.”





# The Courses of Montco

Whether you are looking for a casual round or a championship course, Montgomery County has it all.

Take a swing at the Arnold Palmer-designed course at Blue Bell Country Club in Blue Bell. Or practice your putting at Lederach Golf Club in Harleysville. For more affordable greens, try the fairways at Skippack Golf Club in Skippack. With more than 50 well-maintained public and private courses, you'll be glad you brought your clubs!



Butter Valley Golf Port

**ALVERTHORPE PARK GOLF COURSE**

Forest Ave & Fox Chase Rd  
Jenkintown, PA 19046  
(215) 884-6538

**BELLA VISTA GOLF COURSE**

2901 Fagleysville Rd  
Gilbertsville, PA 19525  
(610) 705-1855

**BLUE BELL COUNTRY CLUB ●**

1800 Tournament Dr  
Blue Bell, PA 19422  
(215) 616-8100

**BLUESTONE COUNTRY CLUB ●**

711 Boehms Church Rd  
Blue Bell, PA 19422  
(215) 646-2300

**BROOKSIDE COUNTRY CLUB ●**

850 N. Adams St  
Pottstown, PA 19464  
(610) 323-4520

**BUTTER VALLEY GOLF PORT**

3243 Gehman Rd  
Barto, PA 19504  
(610) 845-2491

**CEDARBROOK COUNTRY CLUB ●**

180 Penllyn Pk  
Blue Bell, PA19422  
(215) 646-9410

**COMMONWEALTH NATIONAL GOLF CLUB ●**

250 Babylon Rd  
Horsham, PA 19044  
(215) 672-4141

**DOWNINGTOWN COUNTRY CLUB**

93 Country Club Dr  
Downingtown, PA 19335  
(610) 873-0800

**FLOURTOWN COUNTRY CLUB ●**

150 McCloskey Rd  
Flourtown, PA 19031  
(215) 233-1550

**GILBERTSVILLE GOLF CLUB**

2944 Lutheran Rd  
Gilbertsville, PA 19525  
(610) 323-3222

**GREEN VALLEY COUNTRY CLUB ●**

201 W. Ridge Pk  
Lafayette Hill, PA 19444  
(610) 828-3000

**GULPH MILLS GOLF CLUB ●**

200 Swedeland Rd  
King of Prussia, PA 19406  
(610) 828-9370

**HICKORY VALLEY GOLF CLUB**

1921 Ludwig Rd  
Gilberstville, PA 19525  
(610) 754-7733

**HUNTINGDON VALLEY COUNTRY CLUB ●**

2295 Country Club Dr  
Huntingdon Valley, PA 19006  
(215) 659-1584

**INDIAN VALLEY COUNTRY CLUB ●**

650 Bergey Rd  
Telford, PA 18969  
(215) 723-9886

**JC MELROSE COUNTRY CLUB**

7600 Tookany Creek Pkwy  
Cheltenham, PA 19012  
(215) 379-5300

**JEFFERSONVILLE GOLF CLUB**

2400 W. Main St  
Jeffersonville, PA 19403  
(610) 539-0422

**LANDIS CREEK GOLF CLUB**

765 N. Lewis Rd  
Limerick, PA 19468  
(610) 495-6945



Green Valley Country Club

**LEDERACH GOLF CLUB**

900 Clubhouse Dr  
Harleysville, PA 19438  
(215) 513-3034

**LIMEKILN GOLF CLUB**

1176 Limekiln Pk  
Ambler, PA 19002  
(215) 643-0643

**LINFIELD NATIONAL GOLF CLUB**

66 Church Rd  
Linfield PA 19468  
(610) 495-8455

**LULU COUNTRY CLUB ●**

1600 Limekiln Pk  
Glenside, PA 19038  
(215) 576-7030

**MACOBY RUN GOLF COURSE**

5275 McLean Station Rd  
Green Lane, PA 18054  
(215) 541-0161

**MAINLAND GOLF CLUB**

2250 Rittenhouse Rd  
Mainland, PA 19451  
(215) 256-9548

**MANUFACTURERS' GOLF AND COUNTRY CLUB ●**

511 Dreshertown Rd  
Fort Washington, PA 19034  
(215) 886-3200

**NORTH HILLS COUNTRY CLUB ●**

99 Station Ave  
Glenside, PA 19038  
(215) 887-8030

**OLD YORK ROAD COUNTRY CLUB ●**

801 Tennis Ave  
Spring House, PA 19477  
(215) 643-0180

**PHILADELPHIA COUNTRY CLUB ●**

1601 Spring Mill Rd  
Gladwyne, PA 19035  
(610) 525-6000

**PHILMONT COUNTRY CLUB**

301 Tomlinson Rd  
Huntingdon Valley, PA 19006  
(215) 947-1271



**PINECREST COUNTRY CLUB**

101 Country Club Dr  
Lansdale, PA 19446  
(215) 855-4113

**RAVEN'S CLAW GOLF CLUB**

3159 W. Ridge Pk  
Pottstown, PA 19464  
(610) 495-4710

**RIVERCREST GOLF CLUB & PRESERVE ●**

100 Golf Club Dr  
Phoenixville, PA 19426  
(610) 933-4700

**ROLLING TURF GOLF CLUB**

28 Smith Rd  
Schwenksville, PA 19473  
(610) 287-7297

**SANDY RUN COUNTRY CLUB ●**

200 Valley Green Rd  
Oreland, PA 19075  
(215) 233-0666

**SKIPPACK GOLF CLUB**

1146 Stump Hall Rd  
Skeppack, PA 19474  
(610) 584-4226



Spring Hollow Golf Club

**SPRING HOLLOW GOLF CLUB**

3350 Schuylkill Rd  
Spring City, PA 19475  
(610) 948-5566

**SQUIRES GOLF CLUB ●**

623 Cedarhill Rd  
Ambler, PA 19002  
(215) 643-7661



RiverCrest Golf Club & Preserve

**SPRING FORD COUNTRY CLUB ●**

48 Country Club Rd  
Royersford, PA 19468  
(610) 948-0580

**SUNNYBROOK GOLF CLUB ●**

398 Stenton Ave & Joshua Rd  
Plymouth Meeting, PA 19462  
(610) 828-9631

**SWEET WATER COUNTRY CLUB**

2554 Geryville Pk  
Pennsburg, PA 18073  
(215) 541-3111

**TALAMORE COUNTRY CLUB ●**

723 Talamore Dr  
Ambler, PA 19002  
(215) 641-1300

**THE 1912 CLUB ●**

888 Plymouth Rd  
Plymouth Meeting, PA 19462  
(610) 272-4050



RiverCrest Golf Club & Preserve

**THE ABINGTON CLUB**

300 Meeting House Rd  
Jenkintown, PA 19046  
(215) 884-0123

**THE ACE CLUB ●**

800 Ridge Pk  
Lafayette Hill, PA 19444  
(610) 940-4785

**THE CLUB AT SHANNONDELL**

2750 Egypt Rd  
Audubon, PA 19403  
(610) 382-9300

**THE PHILADELPHIA CRICKET CLUB ●**

415 W. Willow Grove Ave  
Philadelphia, PA 19118  
(215) 247-6001

**TURTLE CREEK GOLF COURSE**

303 W. Ridge Pk  
Limerick, PA 19468  
(610) 489-5133

**TWIN PONDS GOLF COURSE**

700 Gilbertsville Rd  
Gilbertsville PA 19525  
(610) 369-1901

**TWIN WOODS GOLF COURSE**

2924 E. Orvilla Rd  
Hatfield, PA 19440  
(215) 822-9263

**WESTOVER COUNTRY CLUB**

401 S. Schuylkill Ave  
Jeffersonville, PA 19401  
(610) 539-4500

**WHITEMARSH VALLEY COUNTRY CLUB ●**

815 Thomas Rd  
Lafayette Hill, PA 19444  
(215) 233-3901

**WORCESTER GOLF CLUB**

1600 Green Hill Rd  
Collegeville, PA 19426  
(610) 222-0200



LISTINGS

# The Hotels of Montco

Valley Forge & Montgomery County, PA are home to world-class hotels and are ready to host you on your next getaway.

Our hotels offer free parking for guests and are conveniently located just a short drive from Center City, Philadelphia, and the Philadelphia International Airport. You'll find the perfect place to stay. Nearly half of our hotels have indoor pools where you can relax year-round.

AMERICA'S BEST VALUE INN- NORRISTOWN

830 W. Main St  
Norristown, PA 19401  
(610) 279-0150

AMERICA'S BEST VALUE INN POTTSTOWN

29 E. High St  
Pottstown PA 19464  
(610) 970-1101

BEST WESTERN FORT WASHINGTON INN

285 Commerce Dr  
Fort Washington PA, 19034  
(215) 542-7930



BEST WESTERN PLUS THE INN AT KING OF PRUSSIA

127 S. Gulph Rd  
King of Prussia, PA 19406  
(610) 265-4500

BRYN-ELLIS B&B

2674 S. Ave  
Bryn Athyn, PA 19009  
(717) 495-4356

CANDLEWOOD SUITES PHILADELPHIA -WILLOW GROVE

250 Business Center Dr  
Horsham, PA 19044  
(215) 328-9119

CHATEAU VALLEY FORGE

2522 W. Main St  
Norristown,PA 19403  
(215) 747-1014

CHUBB HOTEL & CONFERENCE CENTER

800 Ridge Pk  
Lafayette Hill, PA 19444  
(610) 825-8000

COMFORT INN & SUITES - POTTSTOWN

99 Robinson St  
Pottstown, PA 19464  
(610) 326-5000

COURTYARD BY MARRIOTT - DEVON

762 W. Lancaster Ave  
Wayne, PA 19087  
(610) 687-6633

COURTYARD BY MARRIOTT - VALLEY FORGE

1100 Drummers Ln  
Wayne, PA 19087  
(610) 687-6700

COURTYARD BY MARRIOTT PHILADELPHIA LANSDALE

1737 Sumneytown Pk  
Lansdale, PA 19446  
(215) 412-8686

COURTYARD BY MARRIOTT PHILADELPHIA MONTGOMERYVILLE

544 Dekalb Pk  
North Wales, PA 19454  
(215) 699-7247

COURTYARD BY MARRIOTT PHILADELPHIA VALLEY FORGE/COLLEGEVILLE

600 Campus Dr  
Collegeville, PA 19426  
(484) 974-2600

COURTYARD BY MARRIOTT PLYMOUTH MEETING

651 Fountain Rd  
Plymouth Meeting, PA 19462  
(610) 238-0695



Hyatt Place Philadelphia/ King of Prussia

COURTYARD BY MARRIOTT WILLOW GROVE

2350 Easton Rd  
Willow Grove, PA 19090  
(215) 830-0550

CREATIVE INKLING

222 N. York Rd  
Hatboro, PA 19040  
(267) 367-6253

CROWNE PLAZA - VALLEY FORGE/LIBERTY CONFERENCE CENTER

260 Mall Blvd  
King of Prussia, PA 19406  
(610) 265-7500

DAYS INN - HORSHAM/PHILADELPHIA

245 Easton Rd  
Horsham, PA 19044  
(215) 674-2500

DAYS INN - POTTSTOWN

1600 Industrial Hwy  
Pottstown, PA 19464  
(610) 327-3300

DECK MOTEL

602 Dekalb Pk  
Blue Bell, PA 19422  
(610) 272-5613

DOUBLE EAGLE BED AND BREAKFAST

1052 Mill Hill Rd  
East Greenville, PA 18041  
(215) 679-5764

DOUBLETREE BY HILTON PHILADELPHIA/ VALLEY FORGE

301 W. DeKalb Pk  
King of Prussia, PA 19406  
(610)337-1200

DOUBLETREE SUITES BY HILTON - PHILADELPHIA WEST

640 Fountain Rd  
Plymouth Meeting, PA 19462  
(610) 834-8300

EMBASSY SUITES BY HILTON PHILADELPHIA VALLEY FORGE

888 Chesterbrook Blvd  
Wayne, PA 19087  
(610) 647-6700

EXTENDED STAY AMERICA - KING OF PRUSSIA

400 American Ave  
King of Prussia, PA 19406  
(610) 962-9000

EXTENDED STAY AMERICA - PLYMOUTH MEETING

437 Erwins Ln  
Plymouth Meeting, PA 19462  
(610) 260-0488

EXTENDED STAY HORSHAM - DRESHER ROAD

537 Dresher Rd  
Horsham, PA 11111  
(215) 956-9966





---

**EXTENDED STAY HORSHAM - WELSH ROAD**

114 Welsh Rd  
Horsham, PA 19044  
(215) 784-9045

---

**FAIRFIELD INN & SUITES MARRIOTT VALLEY FORGE/GREAT VALLEY**

1005 Westlakes Dr  
Berwyn, PA 19312  
(484) 324-4111

---

**FAIRFIELD INN AND SUITES BY MARRIOTT PHILADELPHIA WILLOW GROVE**

2440 Maryland Rd  
Willow Grove, PA 19090  
(215) 885-1130

---

**FAIRFIELD INN PHILADELPHIA - VALLEY FORGE**

258 Mall Blvd  
King of Prussia, PA 19406  
(610) 908-6046

---

**FRENCH CREEK INN**

2 Ridge Rd  
Phoenixville, PA 19460  
(610) 935-3838

---

**GEORGE WASHINGTON WOOD BED & BREAKFAST**

201 E. 5th Ave  
Conshohocken, PA 19428  
(215) 514-6543

---

**HAMPTON INN - KING OF PRUSSIA**

530 W. DeKalb Pk  
King of Prussia, PA 19406  
(610) 962-8111

---

**HAMPTON INN - PHILADELPHIA /PLYMOUTH MEETING**

2055 Chemical Rd  
Plymouth Meeting, PA 19462  
(610) 567-0900

---

**HAMPTON INN - WILLOW GROVE**

1500 Easton Rd  
Willow Grove, PA 19090  
(215) 659-3535

---

**HAMPTON INN & SUITES - VALLEY FORGE/OAKS**

100 Cresson Blvd  
Phoenixville, PA 19460  
(610) 676-0900

---

**HAMPTON INN & SUITES BY HILTON PHILADELPHIA/MONTGOMERYVILLE**

121 Garden Golf Blvd  
North Wales, PA 19454  
(215) 412-8255

---

**HAMPTON INN AND SUITES BY HILTON MEDIA, PA**

300 S. Beatty Rd  
Media, PA 19063  
(484) 443-8899

---

**HAMPTON INN LIMERICK**

430 Limerick Trappe Rd  
Limerick, PA 19468  
(610) 495-6999

---

**HATFIELD MOTEL**

792 Bethlehem Pk  
Colmar, PA 19440  
(215) 822-2012

---

**HILTON GARDEN INN - FORT WASHINGTON PHILADELPHIA**

530 Pennsylvania Ave  
Ft Washington, PA 19034  
(215) 646-4637

---

**HILTON GARDEN INN EXTON - WEST CHESTER**

720 E. Eagleview Blvd  
Exton, PA 19341  
(610) 458-8822

---

**HILTON GARDEN INN NEWTOWN SQUARE RADNOR**

3743 West Chester Pk  
Newtown Square, PA 19073  
(484) 420-7500

---

**HILTON GARDEN INN VALLEY FORGE**

500 Cresson Blvd  
Phoenixville, PA 19460  
(610) 650-0880

---

**HISTORIC GENERAL WARREN**

9 Old Lancaster Rd  
Malvern, PA 19355  
(610) 296-3637

---

**HOLIDAY INN EXPRESS & SUITES -FORT WASHINGTON**

432 Pennsylvania Ave  
Fort Washington, PA 19034  
(215) 591-9000

---

**HOLIDAY INN EXPRESS HOTEL & SUITES LIMERICK-POTTSTOWN**

15 Keystone Dr  
Limerick, PA 19468  
(484) 932-8827

---

**HOLIDAY INN LANSDALE-HATFIELD**

1750 Sumneytown Pk  
Kulpsville, PA 19443  
(215) 368-3800

---

**HOME2 SUITES BY HILTON - KING OF PRUSSIA /VALLEY FORGE**

550 W. DeKalb Pk  
King of Prussia, PA 19406  
(610) 962-0700

---

**HOMEWOOD SUITES - VALLEY FORGE**

681 Shannondell Blvd  
Audubon, PA 19403  
(610) 539-7300

---

**HOMEWOOD SUITES BY HILTON - LANSDALE**

1200 Pennbrook Pkwy  
Lansdale, PA 19446  
(215) 362-6400

---

**HOMEWOOD SUITES BY HILTON PHILADELPHIA-PLYMOUTH MEETING**

200 Lee Dr  
Plymouth Meeting, PA 19462  
(610) 828-9600



---

**HOLIDAY INN EXPRESS HOTEL & SUITES - KING OF PRUSSIA**

260 N. Gulph Rd  
King of Prussia, PA 19406  
(610) 768-9500

---

**HOMEWOOD SUITES BY HILTON HORSHAM WILLOW GROVE**

720 Blair Mill Rd  
Horsham, PA 19044  
(215) 830-9440



**HOMEWOOD SUITES GREAT VALLEY**

12 E. Swedesford Rd  
Malvern, PA 19355  
(610) 296-3500

**HOTEL FIESOLE**

4046 Skippack Pk  
Skippack, PA 19474  
(610) 222-8009



**HYATT HOUSE KING OF PRUSSIA**

240 Mall Blvd  
King of Prussia, PA 19406  
(610) 265-0300

**HYATT HOUSE PHILADELPHIA  
/PLYMOUTH MEETING**

501 E. Germantown Pk  
East Norriton, PA 19401  
(610) 313-9990

**HYATT PLACE - PHILADELPHIA  
/KING OF PRUSSIA**

440 American Ave  
King of Prussia, PA 19406  
(484) 690-3000

**JOSEPH AMBLER INN**

1005 Horsham Rd  
North Wales, PA 19454  
(215) 362-7500

**MOTEL 6 - KING OF PRUSSIA**

815 W. DeKalb Pk  
King of Prussia, PA 19406  
(610) 265-7200

**MOTEL 6 POTTSTOWN PA**

76 Robinson St  
Pottstown, PA 19464  
(610) 819-1288

**NORMANDY FARM HOTEL  
AND CONFERENCE CENTER**

1401 Morris Rd  
Blue Bell, PA 19422  
(215) 616-8500

**PHILADELPHIA MARRIOTT WEST**

111 Crawford Ave  
W. Conshohocken, PA 19428  
(610) 941-5600

**QUALITY INN - POTTSTOWN**

61 W. King St  
Pottstown, PA 19464  
(610) 326-6700

**QUALITY INN MONTGOMERYVILLE**

678 Bethlehem Pk  
Montgomeryville, PA 18936  
(215) 361-3600

**RADISSON VALLEY FORGE HOTEL**

1160 First Ave  
King of Prussia, PA 19406  
(610) 337-2000

**RESIDENCE INN GREAT VALLEY MALVERN**

10 General Warren Blvd  
Malvern, PA 19355  
(484) 899-7800

**RESIDENCE INN BY MARRIOTT  
- PHILADELPHIA/CONSHOHOCKEN**

191 Washington Sq  
Conshohocken, PA 19428  
(610) 828-8800

**RESIDENCE INN BY MARRIOTT  
MONTGOMERYVILLE**

1110 Bethlehem Pk  
North Wales, PA 19454  
(267) 468-0111

**RESIDENCE INN BY MARRIOTT WILLOW GROVE**

3 Walnut Grove Dr  
Horsham, PA 19044  
(215) 443-7330

**RESIDENCE INN COLLEGEVILLE**

500 Campus Dr  
Collegeville, PA 19426  
(610) 831-9400

**RODEWAY INN CONFERENCE CENTER**

969 Bethlehem Pk  
Montgomeryville, PA 18936  
(215) 699-8800

**ROYERSFORD HOTEL**

213 Main St  
Royersford, PA 19426  
(610) 948-7874

**SHERATON GREAT VALLEY**

707 E. Lancaster Pk  
Frazer, PA 19355  
(610) 524-5500

**SHERATON VALLEY FORGE**

480 N. Gulph Rd  
King of Prussia, PA 19406  
(484) 238-1800

**SOJOURNER SUITES**

536 Main St  
Harleysville, PA 19438  
(215) 256-6626

**SPRINGHILL SUITES - WILLOW GROVE**

3900 Commerce Ave  
Willow Grove, PA 19044  
(215) 657-7800

**SPRINGHILL SUITES PHILADELPHIA  
PLYMOUTH MEETING**

430 Plymouth Rd  
Plymouth Meeting, PA 19462  
(610) 940-0400

**SPRINGHILL SUITES PHILADELPHIA  
VALLEY FORGE/KING OF PRUSSIA**

875 Mancill Mill Rd  
King of Prussia, PA 19406  
(610) 783-1400

**STAYBRIDGE SUITES - PHILADELPHIA  
VALLEY FORGE**

88 Anchor Pkwy  
Royersford, PA 19468  
(610) 792-9300

**STAYBRIDGE SUITES MONTGOMERYVILLE**

119 Garden Golf Blvd  
North Wales, PA 19454  
(215) 393-8899

**THE GLOBE INN**

326 Fourth St  
East Greenville, PA 18041  
(215) 679-5948

**THE INN AT VILLANOVA UNIVERSITY**

601 County Line Rd  
Radnor, PA 19087  
(610) 519-8000

**THE MAINSTAY INN**

184 E. Bridge St  
Phoenixville, PA 19460  
(610) 933-7998

**TOWNEPLACE SUITES BY MARRIOTT  
PHILADELPHIA HORSHAM**

198 Precision Dr  
Horsham, PA 19044  
(215) 323-9900

**TWIN TURRETS INN**

11 E. Philadelphia Ave  
Boyertown, PA 19512  
(610) 367-4513

**VALLEY FORGE CASINO RESORT**

1160 First Ave  
King of Prussia, PA 19406  
(610) 354-8118

**WILLIAM PENN INN**

1017 DeKalb Pk  
Gwynedd, PA 19436  
(215) 699-9272

**WOODSIDE LODGE AT SPRING MOUNTAIN**

150 E. Park Ave  
Schwenksville, PA 19473  
(484) 552-8457



LISTINGS

# Montco Makers

Montgomery County is home to a diverse selection of craft breweries, wineries, and distilleries, including some of the most awarded in the country!

Montco Makers is your guide to all the craft beer, wine, and spirits that Montco has to offer. Always remember to drink responsibly.



Boardroom Spirits

**A'DELLO VINEYARD & WINERY**

21 Simmons Rd  
Perkiomenville, PA 18074  
(610) 754-0006  
adellowines.com

**AMRUTH BREWING COMPANY**

232 King St  
Pottstown, PA 19464  
(484) 300-4306  
amruthbrewery.com

**BALD BIRDS BREWING COMPANY**

970 Rittenhouse Rd Suite 400  
Audubon, PA 19403  
(484) 392-7068  
baldbirdsbrewing.com

**BOARDROOM SPIRITS**

575 W. 3rd St  
Lansdale, PA 19446  
(215) 815-5351  
boardroomspirits.com

**BOYD'S CARDINAL HOLLOW WINERY**

1830 West Point Pk  
Lansdale, PA 19446  
(215) 801-2227  
cardinalhollowwinery.com

**BROTHERS KERSHNER BREWING CO.**

4119 Skippack Pk  
Skippack, PA 19474  
(610) 304-0822  
brotherskershner.com

**CHADDSFORD WINERY**

632 Baltimore Pk  
Chadds Ford, PA 19317  
(610) 388-6221  
chaddsford.com

**CONSHOHOCKEN BREWING CO. - KOP**

3100 Horizon Drive, Suite 150  
King of Prussia, PA 19406  
conshohockenbrewing.com

**CROOKED EYE BREWERY**

13 E Montgomery Ave Ste 2  
Hatboro, PA 19040  
(215) 285-9253

**FIVE SAINTS DISTILLING**

129 E. Main St  
Norristown, PA 19401  
(610) 304-3081  
fivesaintsdistilling.com

**GLENSIDE ALE HOUSE**

17 Limekiln Pk  
Glenside, PA 19038  
(267) 636-5613  
glensidealehouse.com

**IMPRINT BEER CO.**

1500 Industry Rd, Suite 0  
Hatfield, PA 19440  
(267) 645-9520  
imprintbeer.com

**POTTSTOWN UNITED BREWING CO**

251 E. High St  
Pottstown, PA 19464  
(484) 752-4943  
pottstownunitedbrewing.com

**ROUND GUYS BREWING COMPANY AND PUB**

324 W. Main St  
Lansdale, PA 19446  
(215) 368-2640  
pub.roundguysbrewery.com



Workhorse Brewing Company

**SLY FOX BREWING COMPANY**

Pottstown Airport Business Center  
331 Circle of Progress Dr  
Pottstown, PA 19464  
(484) 524-8210  
slyfoxbeer.com

**STEEL CITY COFFEEHOUSE & BREWERY**

203 Bridge St  
Phoenixville, PA 19460  
(484) 924-8425  
steelcitycoffeehouse.com

**STONE AND KEY CELLARS**

435 Doylestown Rd  
Montgomeryville, PA 18936  
(215) 855-4567  
stoneandkeycellars.com

**TANNERY RUN BREW WORKS**

131 East Butler Ave  
Ambler, PA 19002  
(215) 613-1113  
www.tanneryrun.com

**TEN7 BREWING COMPANY**

510 Beaver St  
North Wales, PA 19454  
(717) 710-2739

**THE UNDERGROUND**

408 W. Main St  
Lansdale, PA 19446  
(610) 715-1512  
underground.roundguysbrewery.com

**WORKHORSE BREWING COMPANY**

250 King Manor Dr  
King of Prussia, PA 19406  
(215) 539-3472  
workhorsebrewing.com

Limousine and

KING

Transportation Service, Inc.

Experience Luxury, Reliability,  
and over 30 years of Experience.

We can provide transportation  
for any size group.

24/7 Full Service Transportation.

Servicing PA, DE, NJ and NY areas.

610-265-3050 ext. 7205

www.Kinglimoinc.com





★★★★★  
**BEFORE  
YOU READ  
THE GREENS  
READ THE  
REVIEWS.**

**GOLFADVISOR.**  
BY GOLFERS. FOR GOLFERS.

To hear what real golfers have to say about thousands of courses worldwide, visit [golfadvisor.com](https://golfadvisor.com).  



**Philly's Next Major**

TICKETS NOW ON SALE!

Stacy  
Lewis

KPMG WOMEN'S PGA | ARONIMINK GOLF CLUB | JUNE 23-28, 2020

FOR MORE INFORMATION ABOUT VOLUNTEERING AND HOSPITALITY, PLEASE VISIT: [KPMGWOMENSPGA.COM](https://KPMGWOMENSPGA.COM)





# VALLEY FORGE

& MONTGOMERY COUNTY, PA

1000 1st Avenue Ste 101, King of Prussia, PA 19406  
610.834.1550 | valleyforge.org

**FPO**



#MAKEITMONTCO



MONTCOGOLF.COM