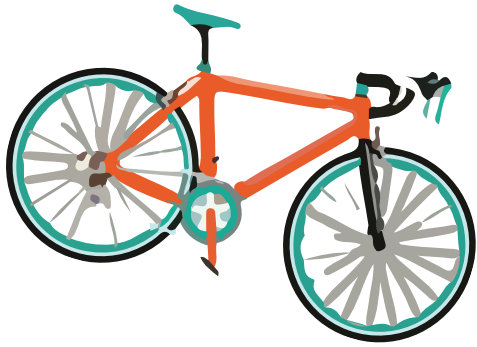




VALLEY FORGE

TOURISM & CONVENTION BOARD



SAMPLE STUDENT ITINERARIES

History that Marches Off the Page

It's one thing to read about the significant forward steps our nation took in Valley Forge and Montgomery County, Pa. It's something else entirely to experience them yourself.

Awaken Your Inner Adventurer

Get that pulse to pound a little; gasp in surprise at a new experience; learn a new skill. Going home with just an album of selfies is boring. Take home a badge of honor.

Make a Groundbreaking Discovery

Explore Valley Forge and Montgomery County, Pa., and learn something new — even if it's about yourself and what you can accomplish when challenged.



For more information, please contact:

Tourism Sales Department
1000 First Avenue, Suite 101
King of Prussia, PA 19406
Toll Free: (800) 441-3549
Email: tours@valleyforge.org

www.valleyforge.org/group-tours/

HISTORY THAT MARCHES OFF THE PAGE

HALF DAY



The fascinating story of the Continental Army and its quest for liberty is embodied by the encampment at **Valley Forge National Historical Park**. For a deeper dive into patriotism, stroll the grounds of the **Freedoms Foundation at Valley Forge**. There, you'll tap into the gravitas of every Medal of Honor recipient, state by state.

EXTEND TO A FULL DAY



Valley Forge National Historical Park offers tours on bus and on foot, but for a unique perspective, saddle up for a guided bicycle trip of its 3,500 acres. The pathways are paved and the scenery – especially in spring and fall – is stunning.

The **John James Audubon Center at Mill Grove** continually inspires students of natural history and art. While onsite, it's easy to see how Mill Grove fed Audubon's interest in ornithology, especially when gliding in a canoe on the placid Perkiomen Creek.

MAKE IT AN ADVENTURE



Opening in 2017 is the **Museum of the American Revolution**, surrounding visitors with the sights, sounds and emotions that inspired the steps toward independence. The Valley Forge connection is fundamental to this tale, evidenced by the display of General Washington's tent, which served as his first HQ during the 1777-1778 encampment.

Dine in the nearby **Black Powder Tavern**, which once hosted secret meetings between General Washington and his staff. From there, it's less than a half hour to **Peter Wentz Farmstead**, which twice served as a Washington headquarters.

Hop on the recently refurbished **Colebrookdale Railroad** for a trip through the gorgeous Pennsylvania countryside. Stop by the **Historic Waynesborough**, the 18th century mansion that was the home of Revolutionary War General, "Mad" Anthony Wayne. And head on over to the **Elmwood Park Zoo** to check out a pair of wildly entertaining red pandas.




Performance Venue Options



AWAKEN YOUR INNER ADVENTURER

HALF DAY



Experience  **Elmwood Park Zoo**, a 90-year old institution that is anything but old-fashioned. The animal encounters are designed for maximum viewing, and educators frequently take to the pathways with friendly, furry creatures right by their sides.

Students can eat at Treetop Café before hand-feeding a burly bison or a gentle giraffe. Throw some exhilaration into the curriculum at the onsite **Treetop Adventures**, a zipline that sends students soaring right over the animal enclosures.

EXTEND TO A FULL DAY




Go to new heights at **Spring Mountain Adventures** on canopy tours that flexes both mental and physical muscles. Planning a visit during the winter months? The mountain is seasonally groomed for skiing, snowboarding and tubing.

Keep the adrenaline racing at **iFly King of Prussia**, the area's newest thrill. It's indoor skydiving, meaning it's got all the freedom of flight without the need for an airplane or parachute. The iFly staff can augment a visit with educational content and onsite catering.

Round the day off at **Arnold's Family Fun Center**, where your group can strap into one of 75 go-karts and grab hold for the tight turns of a quarter-mile race track. Go ahead and let the rain fall; the indoor possibilities at Arnold's include laser tag, bowling, carnival-style rides and arcade play.

MAKE IT AN ADVENTURE



Take a ride on the Civil War-era  **Colebrookdale Railroad** and marvel at one of the most scenic stretches in Montgomery County. Stop into the **Boyertown Museum of Historic Vehicles**, displaying not only local advances in the transportation industry but also a lovingly preserved 1938 diner.

Pick up a step-on guide at the **Valley Forge National Historical Park** and learn first-hand how the men and women of the Continental Army persevered through the hardships of the winter encampment.



Performance Venue Options

MAKE A GROUNDBREAKING DISCOVERY

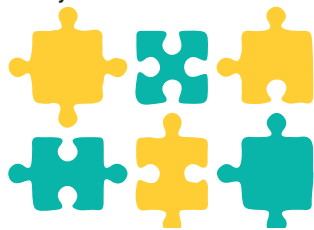
HALF DAY



Winter, spring, summer and fall, the views from the historic **📍 Colebrookdale Railroad** are serene and beautiful. On-board narration explains to students what they're seeing and why it was important to the local economy over the past 150 years.

Have lunch catered on the train or reserve a private section of tables at one of the many delightful restaurants along **Boyertown Main Street**.

Quick thinking and a dose of creativity are the tools students need to navigate the **Escape Room Mysteries**. Teams can tackle one of four themed challenges (The Egyptian Tomb, The Revolution, The Laboratory, The Billionaire's Den), but they must work together... or be lost forever.



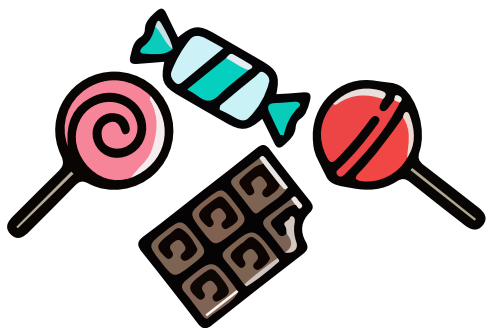
EXTEND TO A FULL DAY



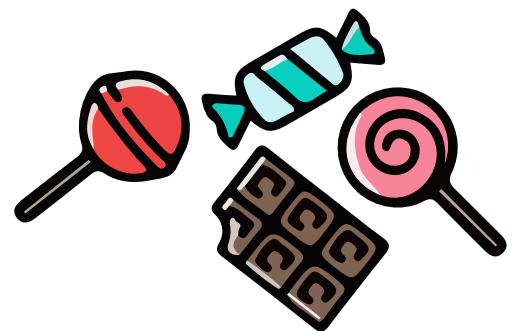
Experience the wonders of the **📍 Bryn Athyn Historic District**, a National Historical Landmark that comprises **Bryn Athyn Cathedral, Glencairn Museum** and **Cairnwood Estate**.

Explore 175 acres of landscape at **John James Audubon Center at Mill Grove** and enjoy interpretive demonstrations with live great horned owls and red-tailed hawks. Grab a paddle and travel by canoe down the Perkiomen Creek.

The appeal of **Highlands Mansion and Gardens** runs across all ages of student travelers. Younger kids will think the Georgian architecture is out of a storybook. Teen fans of *Downton Abbey* will think they've wandered right onto the set.



MAKE IT AN ADVENTURE



Soak in the great outdoors at **Green Lane Park**, where groups can paddle their own watercraft or go on a guided pontoon boat tour. The trail network stretches for 25 miles of horseback riding, mountain biking and hiking.

Visit the oldest continuously family owned and operated candy making company in the U.S., **Asher's Chocolates**. Best of all, the products that come zooming off the assembly line can also be sampled in the onsite retail location.

The impressive history of **Peter Wentz Farmstead** – especially its status as a two-time HQ for General Washington – is reason enough to visit. But the cute farm animals are a big draw, too.



Performance Venue Options

DON'T GO HOME YET!



Valley Forge and Montgomery County, Pa., have almost an unlimited treasure trove of things for student travelers to do, see, explore, search, taste and learn about.

Want more? We've got it!

The following hot spots are either situated nearby Valley Forge or are just a short jump away. The Valley Forge Tourism & Convention Board's group-tour staff can provide all the details on when and how to see them at their best:

- ◆  **King of Prussia Mall**
- ◆ **Abington Art Center**
- ◆  **Philadelphia Premium Outlets**
- ◆ **Northern Star Farm**
- ◆  **National Constitution Center**
- ◆  **The Franklin Institute**
- ◆  **Sesame Place**
- ◆  **The Academy of Natural Sciences**
- ◆ **The Philadelphia Museum of Art**
- ◆ **Legoland Discovery Center - Plymouth Meeting**
- ◆ **The Barnes Foundation**
- ◆  **One Liberty Observation Deck**
- ◆ **The American Helicopter Museum**
- ◆  **The Philadelphia Zoo**
- ◆  **The Philadelphia Orchestra**
- ◆ **Ride the Ducks Philadelphia**
- ◆ **Merrymead Farm**
- ◆ **Adventure Aquarium**
- ◆ **Beth Sholom Synagogue**
- ◆ **The Colonial Theater**
- ◆ **Eastern-State Penitentiary**
- ◆ **Herr's Snack Factory Tour**

