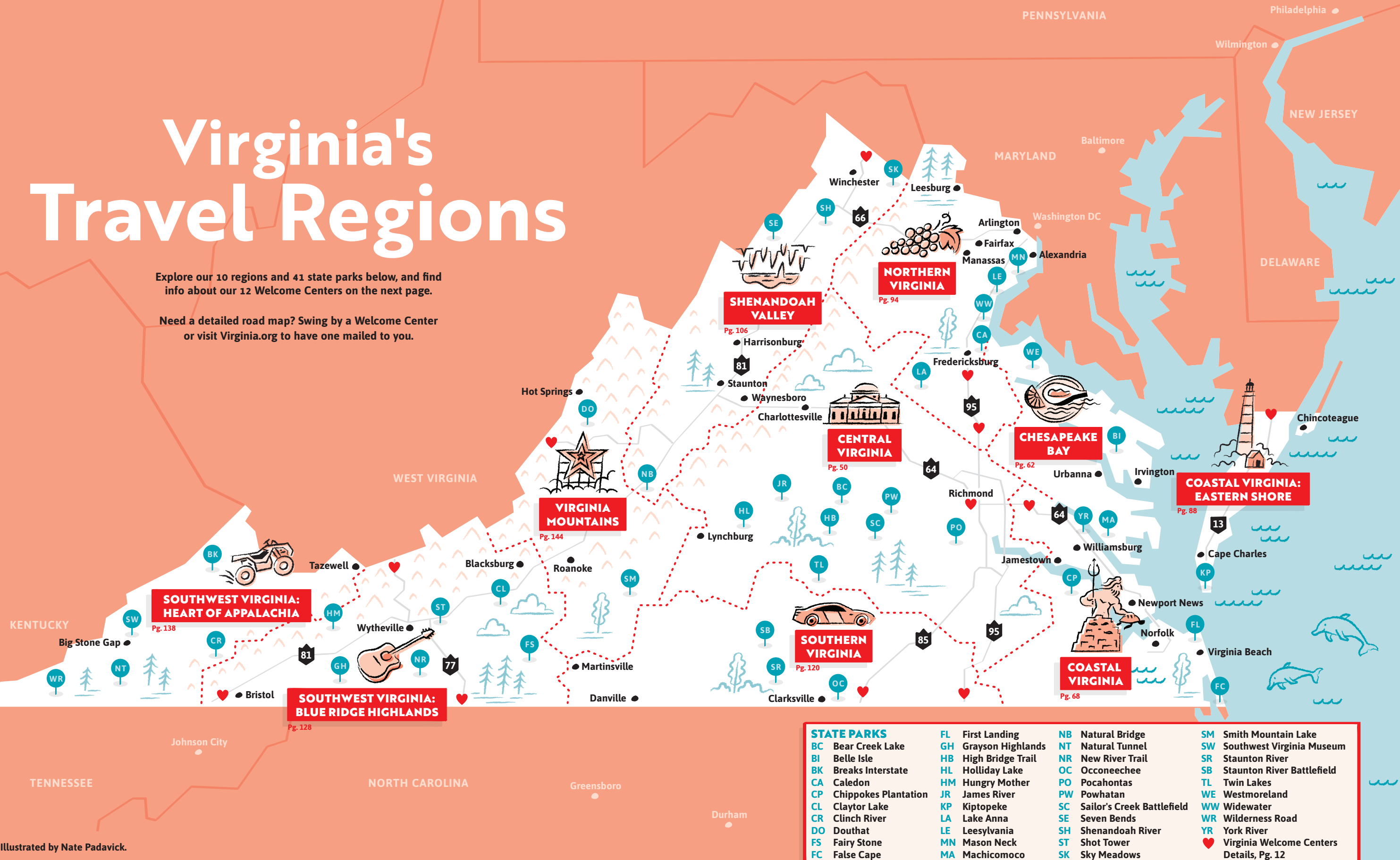


# Virginia's Travel Regions

Explore our 10 regions and 41 state parks below, and find info about our 12 Welcome Centers on the next page.

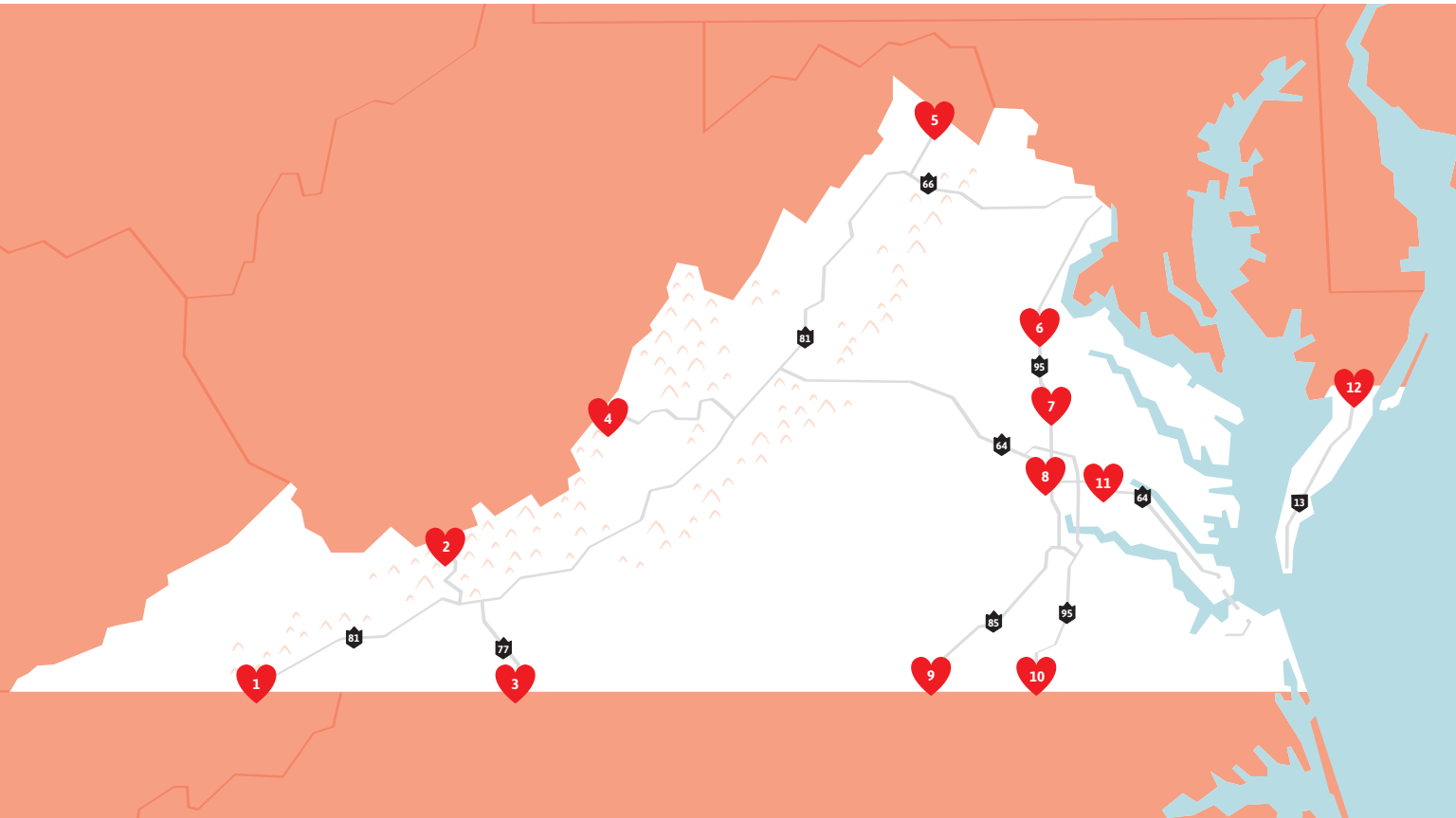
Need a detailed road map? Swing by a Welcome Center or visit [Virginia.org](http://Virginia.org) to have one mailed to you.



## STATE PARKS

BC	Bear Creek Lake	FL	First Landing	NB	Natural Bridge	SM	Smith Mountain Lake
BI	Belle Isle	GH	Grayson Highlands	NT	Natural Tunnel	SW	Southwest Virginia Museum
BK	Breaks Interstate	HB	High Bridge Trail	NR	New River Trail	SR	Staunton River
CA	Caledon	HL	Holliday Lake	OC	Occoneechee	SB	Staunton River Battlefield
CP	Chippokes Plantation	HM	Hungry Mother	PO	Pocahontas	TL	Twin Lakes
CL	Claytor Lake	JR	James River	PW	Powhatan	WE	Westmoreland
CR	Clinch River	KP	Kiptopeke	SC	Sailor's Creek Battlefield	WW	Widewater
DO	Douthat	LA	Lake Anna	SE	Seven Bends	WR	Wilderness Road
FS	Fairy Stone	LE	Leesylvania	SH	Shenandoah River	YR	York River
FC	False Cape	MN	Mason Neck	ST	Shot Tower	♥	Virginia Welcome Centers
		MA	Machicomoco	SK	Sky Meadows		Details, Pg. 12

Illustrated by Nate Padavick.



# Virginia Welcome Centers

In no other state will you receive the hospitality and assistance that Virginia offers. Hold us to it!

**SOUTHWEST VIRGINIA:  
BLUE RIDGE HIGHLANDS**

- 1. Bristol:** I-81 N, Mile Marker O  
276-466-2932
- 2. Rocky Gap:** I-77 S, Mile Marker 61  
276-928-1873
- 3. Lamsburg:** I-77 N, Mile Marker O  
276-755-3931

**VIRGINIA MOUNTAINS**

- 4. Covington:** I-64 E, Mile Marker 2  
540-559-3010

**SHENANDOAH VALLEY**

- 5. Clear Brook:** I-81 S, Mile Marker 320  
540-722-3448

**NORTHERN VIRGINIA**

- 6. Fredericksburg:** I-95 S, Mile Marker 132  
540-786-8344
- 7. Northern Virginia Gateway, Caroline:**  
I-95 N, Mile Marker 107  
804-448-3980

**CENTRAL VIRGINIA**

- 8. Richmond:** I500 E. Main St  
804-545-5581

**SOUTHERN VIRGINIA**

- 9. Bracey:** I-85 N, Mile Marker 1  
434-689-2295
- 10. Skippers:** I-95 N, Mile Marker O  
434-634-4113

**COASTAL VIRGINIA**

- 11. East Coast Gateway, New Kent:**  
I-64 E, Mile Marker 213  
804-966-7450

**COASTAL VIRGINIA: EASTERN SHORE**

- 12. New Church:** U.S. 13, 3420 Lankford Hwy  
757-824-5000

For more information visit  
[virginia.org/welcomecenters](http://virginia.org/welcomecenters).

NATE PADAVICK

# Virginia Travel Tools

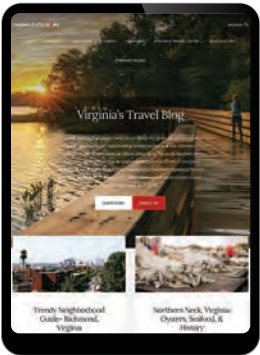
These helpful resources will keep you informed on the go, which means less time planning and more time enjoying what you love on your next Virginia vacation.



**VIRGINIA.ORG**  
Virginia's official travel website and your planning hub, from maps and itineraries to events, attractions, lodging and more.

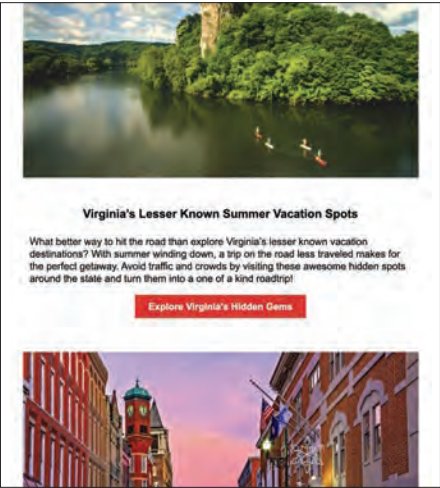
**VIRGINIA'S TRAVEL BLOG**

Travel inspiration and insider tips to dream up your perfect trip.



**STAY IN THE KNOW**

Monthly e-newsletters bring inspiration, deals and packages right to your inbox.



**CONNECT WITH US**

Follow along and share your best pics with #LoveVA!

- VirginialsForLovers
- visitvirginia
- visitvirginia
- visitvirginia
- visitvirginia



**TUNES ON THE GO**

Scan to check out our Spotify playlist!



SOCIAL MEDIA ICONS: COMAUTION - STOCKADORE.COM



CAPE CHARLES LOVEWORK  
Cape Charles



#LoveVA  
#LoveandHstle

VIRGINIA  
IS FOR  
LOVERS

**Love & Hustle.**

Shop our official collaboration with Hmble Hstle® Clothing or any of our other iconic Virginia is for Lovers® gear at [virginia.org/shop](https://virginia.org/shop).

# Go Where the Love Is

With more than 300 locations throughout the state, Virginia's giant LOVEworks make for the ultimate road trip bucket list. So load up the car, crank up the music and hit the road less traveled. Because the best part of a road trip isn't the destination - it's the LOVE you find along the way. #LoveVA

ADAM LEWIS

