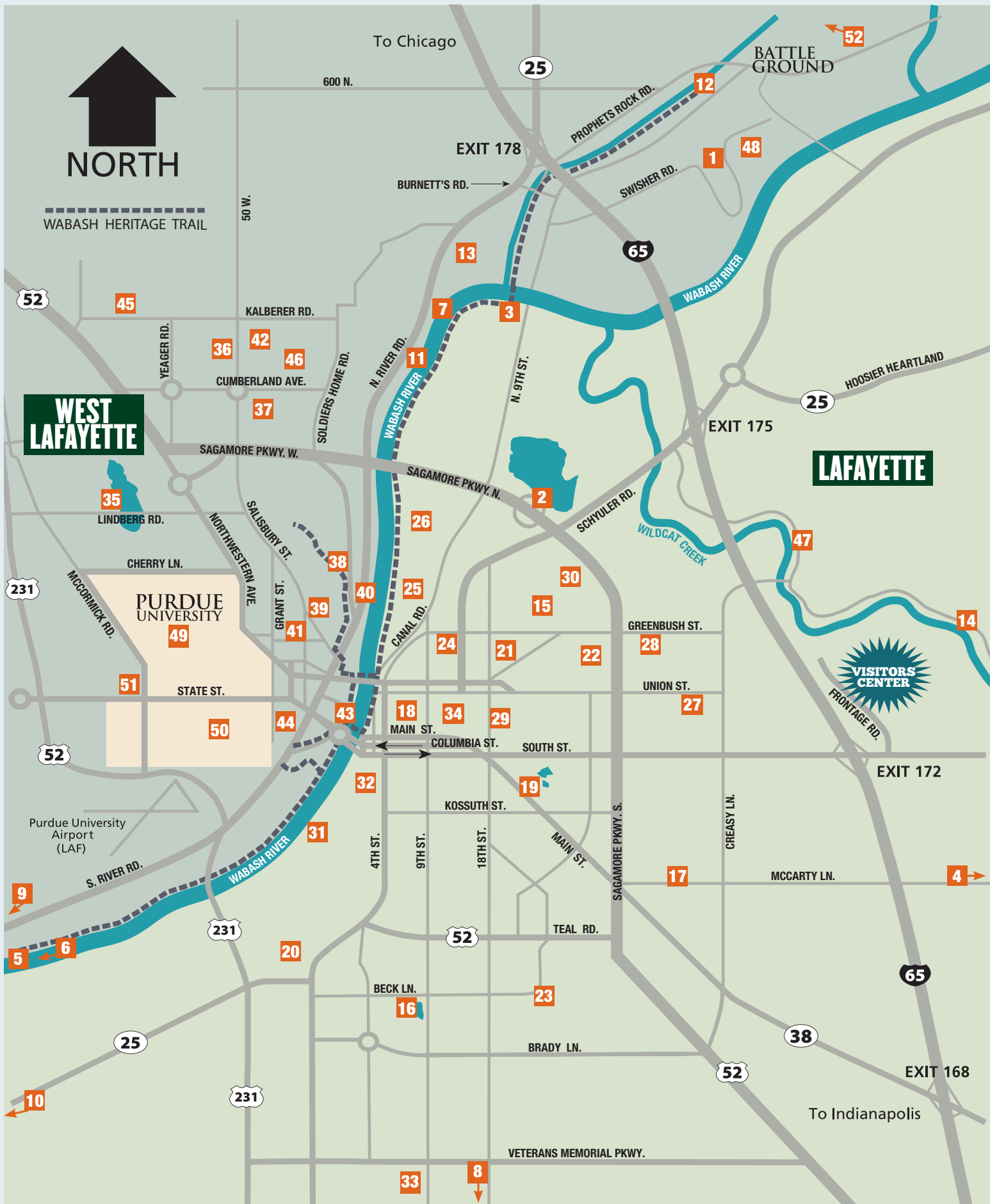


# LAFAYETTE-WEST LAFAYETTE PARKS & RECREATION





## AREA PARKS





PROPHETSTOWN STATE PARK

## INDIANA STATE PARK

[in.gov/dnr](http://in.gov/dnr)

### Prophetstown State Park:

5545 Swisher Rd., West Lafayette, 765-567-4919  
— Explore 15 miles of nature trails lead through tall grass prairies, wooded bluffs, and alongside ponds and wetlands. See exceptional wildlife, wildflowers and more. Enjoy nature and history programs every weekend April-October. The aquatic center features a tube slide, body slide, lazy river, splash zones and zero-entry pool. Take a walk around the Native American village. The Visitor Center displays include live educational animals. Picnic areas offer accessible playgrounds. Four shelter houses and a campground with 110 modern campsites are available for rentals. Gate entrance admission charged. Park is also home to The Farm at Prophetstown, (see NATURE LEARNING). **#1**

## TIPPECANOE COUNTY PARKS

### Tippecanoe County Parks and Recreation

4449 SR 43 N., West Lafayette  
765-463-2306, [tippecanoe.in.gov](http://tippecanoe.in.gov)

#### Bicentennial Nature Area:

3600 Sagamore Pkwy. N., Lafayette — 196-acres; features a large pond (approximately 70 acres), that allows for limited bank fishing, small boat fishing (electric trolling motors only), kayaks, canoes, paddle boards and windboards. Life jackets are required when on the water and swimming is not allowed. **#2**

**Davis Ferry Park:** 3900 N. 9th St., Lafayette — 13 acres; Wabash Riverfront park offering a fishing bridge, boat launch and access to the Wabash Heritage Trail, no restrooms or water are available. **#3**

**Fairfield Lakes:** 1998 S. 750 E., Lafayette — 55 acres; 4 stocked lakes with accessible fishing areas and restrooms (see FISHING & BOATING). **#4**



WILDCAT PARK



TIPPECANOE BATTLEFIELD PARK

**Fort Ouiatenon:** 3129 S. River Rd. West Lafayette — 34 acres; Wabash Riverfront park with picnic areas, 2 shelter houses, grills, restrooms, boat launch. Contact the Tippecanoe County Historical Association for programming information at 765-476-8411. **#5**

**Goose Island:** small island in the Wabash River, 8 miles southwest of downtown — 7.6 acres set aside as a nature preserve, undeveloped and poison ivy proliferates. **#6**

**Heron Island:** small island in the Wabash River, just west of Davis Ferry Park — 11 acres set aside as a nature preserve, undeveloped and poison ivy proliferates. **#7**

**Mar Len Park:** 5000 S. 150 E., Lafayette — 29 acres; shelter house, picnic areas, hiking, lighted softball diamond, restrooms and access to Wea Creek. **#8**

**Ross Hills Park:** 8815 W. 50 S., West Lafayette — 168 acres; 2 picnic shelters, picnic areas, restrooms, trails, deck overlook, volleyball, softball backstop. For shelter reservations and David Ross House rental info, call 765-463-2306. **#9**

**Shadeland Park:** 2450 W. 450 S., Shadeland, 765-477-0116. Baby swings, large playground equipment for older kids, basketball/pickleball court, baseball field, and picnic shelter. ADA accessible, includes freestyle swings. Park is managed by Shadeland Town Hall. **#10**

**Tecumseh Trails Park:** 3800 N. River Rd. West Lafayette — 23 acres; across from Indiana Veterans' Home, overlooks the Wabash River, picnic areas, and shelter house. **#11**

#### Tippecanoe Battlefield Park:

200 Battle Ground Ave., Battle Ground 765-567-2147 — 96 acres; includes an 85 foot tall marble obelisk monument to the Battle of Tippecanoe, the Tippecanoe Battlefield Museum offering exhibits and gift shop (admission charged), Wah-ba-shik-a Nature Center (see NATURE LEARNING), a historic chapel, Pioneer Cemetery, picnic areas, restrooms and Burnett Creek access. Park is trailhead to the Wabash Heritage Trail. For shelter reservations and chapel rental, call 765-463-2306. **#12**

#### Tippecanoe County Amphitheater Park:

4449 SR 43 N. West Lafayette — 166 acres; featuring an 1,511 seat amphitheater available to rent for plays, concerts, church services and corporate events. Open turf grass areas, soccer fields and hiking/biking trail available. **#13**

**Wildcat Park:** 5129 Eisenhower Rd., Lafayette — 53 acres; confluence of north and south forks of the Wildcat Creek, shelter house, access for canoeing, picnic areas, nature observation, restrooms, grills and accessible fishing pier. **#14**



BICENTENNIAL NATURE AREA

see map on inside cover for locations



# LAFAYETTE PARKS

## Lafayette Parks & Recreation

1915 Scott St., Lafayette, 765-807-1500  
lafayetteparks.org

**Arlington Park:** 1635 Arlington Rd. — 1 acre; multi-age playground, basketball court and tennis courts. **#15**

**Armstrong Park:** 809 Beck Ln. — 30 acres; 5 lighted tennis courts, 3 basketball courts, 3 baseball fields, playground, fishing pond and 2/3 mile paved trail, restrooms and a 50-seat picnic shelter available for rent. **#16**

**CAT Park and Soccer Fields:** 3630 McCarty Ln. — 32 acres; 8 soccer fields in various sizes, restrooms and concession building. Coming soon—new all-inclusive sports field. **#17**

**Centennial Park:** 500 N. 6th St. — 0.5 acre; multi-age and tot playground, basketball court and picnic shelter. **#18**

**Columbian Park and Zoo:**  
Aquatic Center: 765-807-1531  
Administrative Office: 765-807-1500  
Zoo Office: 765-807-1540  
1915 Scott St. — 40 acres; Loeb Stadium, Columbian Park Zoo, Tropicanoe Cove Aquatic Center, Veterans Memorial, age-relevant ADA accessible playgrounds, ride-on train, trails, paddle boats, ADA accessible fishing, restrooms, picnic shelters, meeting spaces available for rent, and a carousel (coming soon). **#19**

**Crosser Sports Complex:** 220 Breckenridge St. — 15-acres; 4 competition-sized, lighted girls' softball fields, restroom/concession/press box building, playground and paved trail surrounding the park. **#20**

**Hanna Park:** 1201 N. 18th St. — 2.2 acres; multi-age and tot playground, basketball court, tricycle path, educational garden, picnic shelter and grills. **#21**

**Hedgewood Park:** 2902 Beverly Ln. — 1 acre; multi-age playground and open green space. **#22**



MURDOCK PARK

see map on inside cover for locations



TROPICANOE COVE

**Kennedy Park:** 2511 Sequoya Dr. — 7 acres; playground equipment, soccer field and open green space. **#23**

**Linnwood Park:** 1500 Greenbush St. — 0.5 acre; picnic shelter, playground equipment and basketball court. **#24**

**Lyboul Sports Park:** 1300 Canal Rd. — 52 acres; includes portions of the Wabash Heritage Trail, 3 lighted softball fields, horseshoe complex, playground, lighted basketball courts, picnic areas and restrooms. **#25**

**McAllister Park:** 2400 N. 9th St. — 280 acres; model airplane strip, two 18 hole disc golf courses, portions of the Wabash Heritage Trail, Wabash River fishing access and open green space. **#26**

**McCaw Park:** 3750 Union St. — 26 acres; tot & multi-age playgrounds, 3 youth baseball fields, 12 lighted pickleball courts, picnic areas, grills, open spaces wildflowers, restrooms and 2 picnic shelters with 50-seats each available for rent. **#27**

**Munger Park:** 3505 Greenbush St. — 32 acres; fishing pond, 1.0 mile paved trail, multi-age and tot playgrounds, picnic areas with grills, restrooms and a 100-seat picnic shelter available for rent. **#28**

**Murdock Park:** 2100 Cason St. — 39 acres; playgrounds, disc golf course, sled run, basketball court, 0.9 mile interpretive trail, picnic areas, grills and 2 picnic shelters with 50-seats each available for rent. **#29**



ARMSTRONG PARK



COLUMBIAN PARK ZOO

**North Darby Park:** 14 Darby Ln. — 0.8 acre; multi-age playground, basketball court and open green space. **#30**

**Shamrock Park and Dog Park:** 115 Sanford St. — 11 acres; multi-age and tot playgrounds, outdoor roller hockey rink, basketball courts, horseshoes, Wabash River fishing & boat ramp, picnic areas with grills, dog park (see below), restrooms and a 50-seat picnic shelter available for rent.

**Dog Park:** 765-314-3554 — Tree-lined setting provides park patrons and their dogs with two large fenced areas for large dogs and one fenced area for small dogs. Park users must have a key card to enter. Info for annual pass or a day pass can be found at shamrockdogpark.weebly.com. **#31**

**South Tipp Park:** 300 Fountain St. — 0.8 acre; multi-age and tot playgrounds, basketball court and picnic shelter. **#32**

**Sterling Heights Park:** 610 Harrington Dr. — 1 acre; multi-age playground, swings and a picnic shelter. **#33**

**Stockton Park:** 307 Erie St. — Green space, shelter with picnic tables, swing and spring-rider for small children. **#34**





## WEST LAFAYETTE PARKS

### West Lafayette Parks & Recreation

222 N. Chauncey Ave., West Lafayette  
765-775-5110, [westlafayette.in.gov/parks](http://westlafayette.in.gov/parks)

**Celery Bog Nature Area:** 1620 Lindberg Rd. — 195 acres; over 4 miles of scenic trails through woods and along a marsh, a 1 mile footpath with interpretative signs and home to the Lilly Nature Center (see NATURE LEARNING). **#35**

**Cumberland Park:** 3065 N. Salisbury St. — 62 acres; over 16 acres of Michaud-Sinninger Woods, nature preserve with a 0.4 mile hiking trail, West Lafayette Wellness Center, 2 lighted softball fields, lighted basketball courts, volleyball court, Kiwanis accessible playground, restrooms and 2 picnic shelters are available for rent. Home of the West Lafayette Farmers Market, runs May-October on Wednesday afternoons. **#36**

**George E. Lommel Park:** 300 Wilshire Ave. — 5 acres; accessible playground equipment, softball/soccer areas and a picnic shelter. **#37**

**Happy Hollow Park:** 1301 Happy Hollow Rd. — 81 acres; dog park, accessible playground, picnic shelters available for rent, cookout facilities, restrooms, softball and volleyball areas and 3+ miles of trails, including a section of the Wabash Heritage Trail. **#38**



**Lincoln Park:** 255 Lincoln St. — 0.5 acres; shelter, playground and picnic area. **#39**

**Mascouten Park:** 1000 N. River Rd. — 15 acres; Wabash Riverfront park with public boat launch and picnic tables. **#40**

**Paula R. Woods Park:** 309 Lawn Ave. — 0.5 acre; shelter, playground and picnic area. **#41**

**Peck-Trachtman Park:** 3300 Dubois St. — 2 acres; playground and shelter. **#42**

**Tapawingo Park:** 100 Tapawingo Dr. — 20 acres; Wabash Riverfront park with picnic tables, accessible playground, band shell shelter, a paved section of the Wabash Heritage Trail and home to Riverside Skating Center (see SKATING). **#43**

### Tommy Johnston Park:

221 W. Wood St. — 0.5 acre; basketball court, swing set, fitness stations and picnic shelter. **#44**

### Trailhead Park:

1450 Kalberer Rd. — 4 acres; picnic shelter and access to the Northwest Greenway Trail. **#45**

### University Farm Park:

corner of LaGrange and Hamilton St. — 6 acres; playground and picnic shelter. **#46**



see map on inside cover for locations



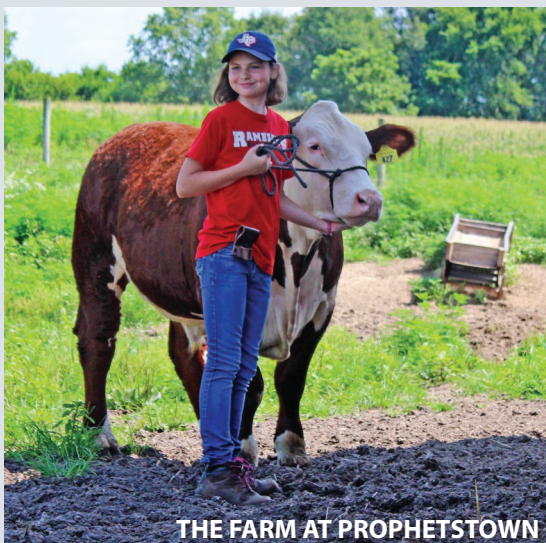


CLEGG MEMORIAL GARDEN

**Clegg Memorial Garden:** 1782 N. 400 E. Lafayette, 765-423-1605 — Overlooks and runs alongside the Wildcat Creek. Offers a naturalistic setting including prairie and oak savanna restorations, extensive beds of wildflowers, labelled trees, bridges and nature trails. Open during daylight hours, admission is free. **#47**

**Columbian Park Zoo:** Columbian Park 1915 Scott St., Lafayette, 765-807-1540 columbianparkzoo.org — Indiana's second oldest zoo, showcases nearly 200 animals representing approximately 90 species. Open seasonally. **#19**

**The Farm at Prophetstown:** 3534 Prophetstown Rd., West Lafayette 765-567-4700, prophetstown.org — A unique experience on all aspects of farm life. Programs revolve around the 1920s farms as they began their transition from animal to tractor power. The Farm is a training farm for sustainable agriculture, homesteading, gardening, canning, as well as farm-to-table cooking, sewing and quilting. It draws on a wide range of resources such as beekeepers, master gardeners, farm experts and home economics experts. Admission is free with state park entry except for special programming and workshops. **#48**



THE FARM AT PROPHETSTOWN

see map on inside cover for locations

## Lilly Nature Center and Celery Bog Nature Area:

1620 Lindberg Rd., West Lafayette 765-775-5172, westlafayette.in.gov/parks — Celery Bog Nature Area contains approximately 195 acres of wetlands, adjacent woods and fields. Lilly Nature Center provides an excellent destination where many topics can be studied. A meeting room is available for rent for educational or environmental meetings. Admission is free. **#35**



CELERY BOG NATURE AREA

**Murdock Park:** 2100 Cason St., Lafayette 765-807-1500 — Occupies 39 acres of urban forest offering a 0.9 mile interpretive trail that identifies nearly 40 varieties of trees. Open during daylight hours. **#29**

**Prophetstown State Park:** see Indiana State Park. **#1**

**Purdue Arboretum:** throughout the Purdue University campus, West Lafayette, purdue.edu — Enjoy three walking trails promoting environmental sustainability. Each trail is designed to show the diversity of trees on Purdue's campus. Trees are identified by a small wooden post and a QR code to give smartphone users additional educational information. **#49**

## Purdue Horticulture Gardens:

Purdue University, 625 Agriculture Mall Dr. West Lafayette, 765-494-1296 hort.purdue.edu — Adjacent to the horticulture building, the gardens display a wide diversity of plants, including nearly 200 species of perennials and foliage plants, over 300 cultivars of annuals and vegetables. Self-guided tour booklet available on-site. Admission is free, open during daylight hours. **#50**

## Purdue Horticulture Park:

300 McCormick Rd., West Lafayette, purdue.edu — Open landscaped, perfect for picnics, peaceful walks and exploring the beauty of its natural settings. Open during daylight hours, can be reserved for private events. **#51**

## PURDUE HORTICULTURE GARDENS



## Wabash Heritage Trail:

Approximately 18 miles of scenic trailway along Burnett Creek and the Wabash River. The northern trailhead begins at Tippecanoe Battlefield Park in Battle Ground and meanders along Burnett Creek to the Wabash River. It passes along the cities of Lafayette and West Lafayette and ends at Fort Ouiatenon. Trail maps and conditions are available at the Wah-ba-shik-a Nature Center, Tippecanoe Battlefield Park. Please—no horses, bikes or motorized vehicles on the footpath in the rural sections of the trail. Bicycles are permitted on the 5 1/2 miles of paved trail in Lafayette and West Lafayette. Camping is prohibited along the trail. The trail is maintained by all three park departments.

## Wah-ba-shik-a Nature Center:

200 Battle Ground Ave., Battle Ground 765-267-2993, facebook.com/wahbashika — Located at Tippecanoe Battlefield Park, features natural history exhibits, small animal taxidermy and wildlife feeding observation. Wabash Heritage Trail maps and conditions are available. Admission is free, open daily mid-April-early November. **#12**

**Wolf Park:** 4004 E. 800 N., Battle Ground 765-567-2265, wolfpark.org — Dedicated to the conservation of gray wolves, this non-profit park offers a unique opportunity to experience wolves up close with Howl Nights, various programming and guided tours. Admission charged, open May-November. **#52**



WOLF PARK





## HIKING TRAILS

### Armstrong Park:

809 Beck Ln., Lafayette — 0.66 mile paved trail.

**Celery Bog Nature Area:** 1620 Lindberg Rd., West Lafayette — 195 acres; over 4 miles of trails through woods and along a marsh, some paved.

**Clegg Memorial Garden:** 1782 N. 400 E. Lafayette — 13 acres; wildflowers and lush green trees, open daily until dusk.

**Columbian Trail:** Columbian Park, 1915 Scott St., Lafayette — 1.10 mile scenic trail through the park.

**Cumberland Park/ Michaud-Sinninger Woods Nature Preserve:** 3065 N. Salisbury St., West Lafayette — 62 acres; paved and footpath trails.

### Faith Community Center:

5572 Mercy Way, Lafayette — Paved trail.

**Happy Hollow Park:** 1301 Happy Hollow Rd., West Lafayette — 81 acres; sections of the Wabash Heritage Trail (see below) paved and a footpath trail.

**Linear Park Trail:** Lafayette — a 2 mile segment begins at Powerhouse Lane and continues alongside the railroad tracks to S. 18th Street, linking with Armstrong Park. Future plans will connect the trail with Wabash Heritage Trail.

### Lisa's Faith and Fitness Trail:

1526 S. 18th St, Lafayette — 0.41-mile paved path with fitness stations.

**Munger Park:** 3505 Greenbush St., Lafayette — 1 mile paved trail.

**Murdock Park:** 2100 Cason St. Lafayette — 0.9 mile interpretive trail.

### Northwest Greenway & Cattail

**Trails:** throughout West Lafayette — connecting trail networks of 8+ miles and 6+ miles respectively.

**Prophetstown State Park:** 5545 Swisher Rd., West Lafayette — 4 trails totaling 9.75 miles, public restrooms. Park entrance fees apply.

**Tapawingo Park:** 100 Tapawingo Dr. West Lafayette — Paved, section of the Wabash Heritage Trail (see NATURE LEARNING).

**Tippecanoe County Amphitheater Trail:** 4449 SR 43 N., West Lafayette — 2 mile, narrow, dirt path built primarily for mountain bike use. Trail closes during special amphitheater events.

**Wabash Heritage Trail:** See NATURE LEARNING.

**YMCA:** 3001 S. Creasy Ln., Lafayette 765-474-3448 — Indoor walking trail



## BIKING

### MOUNTAIN BIKES—OFF ROAD

Five off-road dirt path trails are available;

**Haan Trail:** trailhead around 331 Valley St. Lafayette — 6 miles, out-and-back, intermediate singletrack trail with rocks, ledges, bridges, whoop-de-dos, benched areas, drop-offs and ramps. Helmets are required and BMX bikes are not allowed. Part of the nature trail coincides with the mountain bike trail, and both riders and hikers must share the trail. Privately owned, a liability form is required, which can be filled out at the Haan Museum of Indiana Art, located at 920 State St., Lafayette.

### Hoffman Nature Area:

6935 Old SR 25 Lafayette — 3.5 miles, intermediate to advanced singletrack one-way trail. Trail is shared with hikers.

### McCormick Woods Trail:

corner of McCormick Road and Cherry Ln. West Lafayette — 2.7 miles in two loops, intermediate singletrack trail. For the most part the trail is flat, but it has enough elevation changes and whoop-de-dos to make it fun to ride. Trail is shared with hikers. Limited parking.

**Murdock Park Trail:** 2100 Cason St. Lafayette — 2.6 miles, intermediate/difficult singletrack trail, not for beginners. Trail is shared with hikers.

### Tippecanoe County Amphitheater

**Trail:** 4449 SR 43 N., West Lafayette — 3 mile, intermediate singletrack trails. Trail is shared with hikers and cross country runners. Make sure to stay on the trail. Trail closes during special amphitheater events. The Wabash Heritage Trail is close and bikes are not allowed on it.



### PAVED TRAILWAYS

Paved portions of the Wabash Heritage Trail and 27 miles of West Lafayette's trail system are available for biking, as well as a 3.5 mile trail at Prophetstown State Park.

### BIKE CLUBS

**Tippecanoe Mountain Bike Association:** tmbanow.com

**Wabash River Cycle Club:** wrcc-in.org — The club enjoys rides throughout the season. The annual Wabash River Ride offers scenic routes ranging from 32, 65 and 104 miles.

### BIKE SHOPS & RENTALS

**Hodson's Bay Company:** 360 Brown St., West Lafayette, 765-743-3506

**Virtuous Cycles:** 215 N. 10th St., Lafayette, 765-807-6557

*Due to Emerald Ash Borers, campers are to pickup their firewood locally and discard any excess upon leaving.*



### RV REPAIR & RENTAL SHOPS

**Bill Gardiner's RV Super Center:** 510B Veterans Memorial Pkwy. E., Lafayette, 765-447-5111 — repairs and rentals

**Huston Electric:** 2723 Old Romney Rd., Lafayette 765-474-6115 — generator repairs

**JKB Campers:** 3425 O'Farrell Rd., Lafayette, 765-447-6060 — repairs

**Lafayette Travel Trailer:** 2651 Schuyler Ave., Lafayette 765-423-5353 — repairs



## CAMPING

### AOK Campgrounds of Lafayette:

225 E. 300 S., Lafayette, 765-474-5030 — Open all year, 125 sites.

**Big Fish 'n Campground:** 5831 S. 900 E. Lafayette, 765-296-2346 — Open March-October, 70 sites with unlimited overflow.

**Ken-do Lake:** 9230 Heaton Rd., Clarks Hill 765-523-2744 — Open March-September, 60 sites.

**Prophetstown State Park:** 5545 Swisher Rd., West Lafayette, 765-567-4919 — Open all year, 110 sites, aquatic center.

**Ross Camp:** 9225 W. 75 S., West Lafayette 765-463-2306 — Open April-November, 15 sites.

**Wolfe's Leisure Time Campground:** 7414 Old SR 25 N., Americus, 765-589-8089 — Open all year, Wifi, 130 sites.



# AQUATIC RECREATION



## FISHING & BOATING

All state regulations & licenses are required unless otherwise noted.



BOATING

### Ponds, lakes & creeks

**Armstrong Park:** 809 Beck Ln., Lafayette  
— Community park with accessible pond and restrooms.

#### **Bicentennial Nature Area:**

3600 Sagamore Pkwy. N., Lafayette — 70 acre pond that allows for limited bank fishing, small boat fishing (electric trolling motors only), canoes, kayaks, paddle boards and windboards. Life jackets are required when on the water, no swimming allowed. Open during daylight hours.

**Big Fish 'n Campground:** 5831 S. 900 E. Lafayette — Private pay fishing lake stocked every week during season, no license required, tackle and bait store, firewood, concession, 12 lit acres and open all year; call first during months of November—February.

**Columbian Park:** 1915 Scott St., Lafayette  
— Community park with ponds, ADA accessible fishing and restrooms.

#### **Fairfield Lakes:** 1998 S. 750 E.

Lafayette — 4 stocked lakes with bass, crappie, catfish and rainbow trout, 2 accessible fishing pads, restrooms, canoes, kayaks, boats with trolling motors are allowed, however no ramps are available.

#### **Faith Community Park:**

5572 Mercy Way, Lafayette — Stocked pond.

**Ken-do Lake:** 9230 Heaton Rd., Clarks Hill  
— Private pay fishing lake, stocked every week during season, no license required, tackle and bait store on-site.

**Munger Park:** 3505 Greenbush St., Lafayette  
— Community park with pond, accessible fishing areas and restrooms.

**Prophetstown State Park:** 5545 Swisher Rd., West Lafayette, 765-567-4919 — Fishing lake, restrooms, regular park entrance fees apply.

**Wildcat Park:** 5129 Eisenhower Rd., Lafayette — Access to the Wildcat Creek, accessible fishing pier, restrooms, canoe/kayak access only.

### Indiana State fishing license can be purchased at these locations...

**Dicks Sporting Goods:** 2415 Sagamore Pkwy. S. Lafayette, 765-449-0914

**Prophetstown State Park:** 5545 Swisher Rd. West Lafayette, 765-567-4919

**Meijer:** (2) locations

- 1) 4901 SR 26 E., Lafayette, 765-449-9200
- 2) 2636 US 52, West Lafayette, 765-637-4200



### Wabash River

**Davis Ferry Park:** 3900 N. 9th St., Lafayette  
— Fishing bridge spanning the river, boat launch and access to Wabash Heritage Trail.

**Fort Ouiatenon:** 3129 S. River Rd., West Lafayette — Boat ramp, restrooms.

**Mascouten Park:** 1000 N. River Rd., West Lafayette — Boat ramp.

**River Junction:** 6614 Old SR 25 N., Lafayette  
— Private camp located 6 miles north of Lafayette at the confluence of the Tippecanoe and Wabash rivers offers a boat ramp with fees.

**Shamrock Park:** 115 Sanford St., Lafayette  
— Community park with boat ramp.

**Tapawingo Park:** 100 Tapawingo Dr., West Lafayette — Sandy banks, canoe access only.

**Wolfe's Leisure Time Campground:** 7414 Old SR 25 N., Americus — Private camp, boat ramp with fee.



WILDCAT CREEK



## CANOEING & KAYAKING

**Wildcat Canoe and Kayak Too:** 1850 N. 725 E., Lafayette, 765-589-8081 — Wildcat Creek rentals.

See FISHING & BOATING for these locations;  
**Bicentennial Nature Area, Fairfield Lakes, Tapawingo Park, Wildcat Park**



PROPHETSTOWN STATE PARK AQUATIC CENTER



## SWIMMING

### seasonal

**Castaway Bay:** 601 Beck Ln., Lafayette 765-807-0006 — Outdoor pool, beach-like entrance, spray and play area and water basketball.

#### **Prophetstown State Park Aquatic Center:**

5545 Swisher Rd., West Lafayette 765-567-4919 — Tube slide, body slide, lazy river, splash zones and zero-entry swimming pool.

#### **Tropicanae Cove Family Aquatic Center:**

Columbian Park, 1915 Scott St. Lafayette, 765-807-1531 — Outdoor pool, water slides, kiddie slides, geysers, lazy river and water playground.

#### **Vinton Pool:**

3111 Prairie Ln., Lafayette 765-807-0035 — Outdoor pool, beach-like entrance, splashdown slide, water basketball and playful geysers.

#### **West Lafayette Municipal Pool:**

1200 N. Salisbury St., West Lafayette 765-775-5129 — 3 outdoor heated pools, baby pool and diving boards.

#### **Wolfe's Leisure Time Campground:**

7414 Old SR 25 N., Americus, 765-589-8089 — Private camp with outdoor pool.

### year-round

#### **Northend Community Center:**

2000 Elmwood Avenue, Lafayette, 765-449-3760 — Indoor Pool.

**Parkwest Fitness:** 1330 Win Hentschel Blvd., West Lafayette, 765-464-3435 — Indoor pool with water slide, lap swimming, sauna and whirlpool.

#### **West Lafayette Wellness Center:**

1101 Kalberer Rd., West Lafayette, 765-269-4950 — Indoor pool with 25-yard lap lanes, walking vortex and zero-depth splash pad.

**YMCA:** 3001 S. Creasy Ln., Lafayette 765-474-3448 — Indoor pool, lessons and water exercise.



*Pete Dye*



**BIRCK BOILERMAKER GOLF COMPLEX**



**courses that offer Stay & Play Packages**  
**StayandPlayHomeofPurdue.com**

❖ **Ackerman-Allen Course - Birck Boilermaker Golf Complex:**

Purdue University, 1300 Cherry Ln., West Lafayette 765-494-3139, [purduegolf.com](http://purduegolf.com) — 18 holes featuring rolling fairways, lined with mature hardwoods that guard small greens with strategically placed bunkers, proshop, bar & grill, rental clubs and golf instruction. Renovated in 2014 and re-opened in 2016 after being designed by Pete Dye.

❖ **Battleground Golf Club:**

5505 Pretty Prairie Rd., Battle Ground 765-567-2178, [golfbattleground.com](http://golfbattleground.com) — 18 holes featuring mature trees, large sand bunkers and receptive greens, proshop, bar & grill and golf instruction.

❖ **Coyote Crossing Golf Club:**

5801 Augusta Blvd., West Lafayette, 765-497-1061 [coyotecrossinggolf.com](http://coyotecrossinggolf.com) — 18 holes designed by Hale Irwin, incorporates the all-natural terrain of open meadows, mature forests and the meandering Burnett Creek, driving range, clubhouse, rental clubs and bar & grill.

❖ **Harrison Hills Golf Club:**

413 E. New St., Attica, 765-762-1135, [harrisonhills.com](http://harrisonhills.com); 18 holes on over 200 acres just 30 minutes southwest of Lafayette in Attica. Golf instruction, driving range, proshop, restaurant, bar & grill and meeting facilities.

❖ **Kampen Course - Birck Boilermaker Golf Complex:**

Purdue University 1300 Cherry Ln., West Lafayette, 765-494-3139, [purduegolf.com](http://purduegolf.com) — 18 holes designed by Pete Dye featuring heather rough, waste bunkers, wetlands and scenic views from all locations on the golf course, proshop, clubhouse, driving range, rental clubs, golf instruction and bar & grill.

**The Ravines:** 8525 Division Rd., West Lafayette, 765-583-1550, [ravinesgolf.com](http://ravinesgolf.com) — 18 holes, the front nine is set up as a links style course and is greatly influenced by wind and water, the back nine, on the other hand, is shorter, but shot placement is key, the course features bent grass from tee to green, driving range, clubhouse, rental clubs and bar & grill.

**West Lafayette Golf and Country Club:**

3224 US 52 W., West Lafayette 765-463-2332, [wlgcc.com](http://wlgcc.com) — 18 holes featuring well-manicured fairways and greens, pristine scenery, and challenging sand bunkers and water hazards, driving range, rental clubs, bar & grill and proshop.



**BATTLEGROUND GOLF CLUB**



**DRIVING RANGES**

**A Gusta Wind:** 3816 S. 18th St. Lafayette, 765-471-2405

**Tee Off Golf 2:** 2378 Veterans Memorial Pkwy E., Lafayette, 765-202-0072



**MINIATURE GOLF**

**Hole in One Family Fun:** 311 Meijer Dr., Lafayette, 765-446-2250

**Monster Mini-Golf:** 3573 Promenade Pkwy., Lafayette, 765-471-1300 (indoors)



# SPORTS



## BASEBALL & SOFTBALL

**Lafayette Aviators:** Loeb Stadium at Columbian Park, 1915 Scott St., Lafayette [lafayettebaseball.com](http://lafayettebaseball.com) — This summer collegiate prospect baseball team is an entertainment destination.

**Armstrong Park:** 809 Beck Ln., Lafayette — 3 baseball fields.

**Cumberland Park:** 3101 N. Salisbury St. West Lafayette — 2 lighted softball fields, baseball field.

**Faith Community Center:** 5572 Mercy Way Lafayette — Softball field.

**Family Sports Center:** 3242 W. 250 N. West Lafayette — Softball/baseball field.

**Loeb Stadium:** 1915 Scott St., Columbian Park Lafayette — Baseball field.

**Lybolt Sports Park:** 1300 Canal Rd., Lafayette — 3 lighted softball fields.

**Marlen Park:** 5000 S. 150 E., Lafayette — Lighted softball diamond.

**McCaw Park:** 3745 Union St., Lafayette — 3 lighted youth baseball fields.

**Shadeland Park:** 2450 W. 450 S., Shadeland — Baseball field.



## BASKETBALL

**Arlington Park:** 1635 Arlington Rd., Lafayette

**Armstrong Park:** 809 Beck Ln., Lafayette

**Centennial Park:** 600 Brown St., Lafayette

**Cumberland Park:**  
3101 N. Salisbury St., West Lafayette

**Faith Community Center:**  
5572 Mercy Way Lafayette, 765-449-4600

**Family Sports Center:**  
3242 W. 250 N., West Lafayette, 765-464-0100

**Hanna Park:** 1201 N. 18th St., Lafayette

**Linnwood Park:** 1500 Linnwood St., Lafayette

**Lybolt Sports Park:** 1300 Canal Rd., Lafayette

**Mcallister Recreation Center:**  
2351 N. 20th St., Lafayette, 765-807-1360

**Murdock Park:** 2100 Cason St., Lafayette

**North Darby Park:** 14 Darby Ln., Lafayette

**Parkwest Fitness:** 1330 Win Hentschel Blvd. West Lafayette, 765-464-3435

**Shadeland Park:** 2450 W. 450 S., Shadeland

**Shamrock Park:** 115 Sanford St., Lafayette



## BASKETBALL CONTINUED

**South Tipp Park:** 300 Fountain St., Lafayette

**Tommy Johnston Park:**  
221 W. Wood St., West Lafayette

**West Lafayette Wellness Center:**  
1101 Kalberer Rd., West Lafayette, 765-269-4950

**YMCA:**  
3001 S. Creasy Ln., Lafayette, 765-474-3448

**YWCA:** 605 N. 6th St., Lafayette, 765-742-0075



## BOWLING



## BOWLING

**Market Square Lanes:** Market Square  
2100 Elmwood Ave., Lafayette, 765-447-4106

**Mike Aulby's Arrowhead Bowl:**  
2331 Brothers Dr., Lafayette, 765-477-6500

**Union Rack & Roll:** Purdue Memorial Union  
101 N. Grant St., West Lafayette, 765-494-8990



## CLIMBING

**Climb Lafayette:**  
4650 Dale Dr., Lafayette, 765-532-7752



## DISC GOLF

**McAllister Park:** 800 Golfview Rd., Lafayette — two 18 hole courses.

**Murdock Park:** 2100 Cason St., Lafayette — 18 hole course.

**Purdue University:** 1200 W. Stadium Ave. West Lafayette — two 9 hole courses; one course at Pickett Park and one at Slayter Hill.



## JUMPING

**Elite Air Trampoline Park:**  
3832 Fortune Dr., Lafayette, 765-250-3197

**Get Air Trampoline Park:**  
3540 SR 38 E., Lafayette, 765-226-5651



## PICKLEBALL

**McCaw Park:** 3750 Union St., Lafayette

**Shadeland Park:** 2450 W. 450 S., Shadeland

**YMCA:**  
3001 S. Creasy Ln., Lafayette, 765-474-3448

**YWCA:** 605 N. 6th St., Lafayette, 765-742-0075

## Pickleball association

**Lafayette Pickleball Association**  
[lipa.wildapricot.org](http://lipa.wildapricot.org) — Offers clinics and strives to provide a healthy, recreational activity for all ages.



## RACQUETBALL

**Parkwest Fitness:** 1330 Win Hentschel, Blvd. West Lafayette, 765-464-3435



## PROPHETSTOWN STATE PARK



## SKATING

**Faith Community Center:** 5572 Mercy Way Lafayette, 765-449-4600 — Skate park.

**Riverside Skating Center:**  
100 Tapawingo Dr., West Lafayette, 765-743-7465 — Ice skating, open seasonally.

**Shamrock Park:** 115 Sanford St., Lafayette — Outdoor roller hockey rink.

Roller skating and blading are allowed on paved portions of the Wabash Heritage Trail and West Lafayette's paved trails.



## RIVERSIDE SKATING CENTER





MURDOCK PARK



## SLEDDING

**Murdock Park:** 2100 Cason St., Lafayette — Community park with large hill. A snow machine ensures snow when colder weather prevails. Katy's Cabin offers concessions along with rentals for sledding.

**Slayter Hill:** Purdue University Stadium Ave., West Lafayette



SOCCER CLUBS



## SOCCER

**Bishop Woods:** 2500 S. 9th St., Lafayette

**CAT Park:** 3630 McCarty Ln., Lafayette

**Davidson Fields:** 850 E. 400 S., Lafayette

**Evangelical Covenant Church:**  
3600 S. 9th St., Lafayette

**Faith Community Center:**  
5572 Mercy Way, Lafayette

**Family Sports Center:**  
3242 W. 205 N., West Lafayette

**Kennedy Park:** 2511 Sequoia Dr., Lafayette

**Tippco Fields:** 3700 N. 50 W., West Lafayette

## Soccer association

**GLRSA:** GLRSA.org



## TARGET STRIKING

**Applied Ballistics:**  
3217 Olympia Dr., Lafayette, 765-838-0700

**The Spinning Axe:**  
351 South St., Lafayette, 765-637-7775



TENNIS



## TENNIS

**Arlington Park:** 1635 Arlington Rd.  
Lafayette, 765-807-1500 — 3 lighted courts.

**Armstrong Park:** 809 Beck Ln., Lafayette  
765-807-1500 — 5 lighted courts.

**Cumberland Courts:** 600 Cumberland Ave.  
West Lafayette — 10 lighted courts.

**Sunnyside Middle School:**  
530 N. 26 St., Lafayette — 6 courts.



## WELLNESS CENTERS

**A. H. Ismail Center:** Lyles-Porter Hall  
715 Clinic Dr., West Lafayette, 765-496-1015

**Absolute U Fitness:**  
2529 Schuyler Ave., Lafayette, 765-418-1900

**Be Moved Power Yoga:**  
3451 Wyndham Way, West Lafayette  
765-588-6657

**Boxfit:** 3540 S.R. 38 E., Lafayette, 765-838-2368

**Community Yoga:** 480 Navajo St.  
West Lafayette, 765-201-0494

**CrossFit-WL:** 304 Brown St., West Lafayette  
765-421-6424

**Curves:**  
2200 Elmwood Ave., Lafayette, 765-448-9589



## WELLNESS CENTERS CONTINUED

**Faith Community Center:**  
5572 Mercy Way, Lafayette, 765-449-4600

**Faith West Community Center:**  
1920 Northwestern Ave., West Lafayette  
765-449-3750

**Family Sports Center:**  
3242 W. 250 N., West Lafayette, 765-464-0100

**Hotworx:** 2410 N. Salisbury St., West Lafayette  
765-340-1468

**Iron Phoenix:**  
2200 Elmwood Ave., Lafayette, 765-714-4906

**Lifelong Fitness:**  
11 Shenandoah Dr., Lafayette, 765-543-1354

**McAllister Recreation Center:**  
2351 N. 20th St., Lafayette, 765-807-1360

**Metamorphic Fitness:**  
200 Farabee Dr. N., Lafayette, 765-543-1259

**Miracles Fitness:** 257 Sagamore Pkwy. W.  
West Lafayette, 765-463-3007

**MyGym Children's Fitness Center:**  
2049 Veterans Memorial Pkwy. S., #3  
Lafayette, 765-807-5441

**Orangetheory Fitness:** 1020 D Sagamore  
Pkwy., W., West Lafayette, 765-575-4944

**Parkwest Fitness:** 1330 Win Hentschel  
Blvd., West Lafayette, 765-464-3435

**Performance Pilates Studio:**  
257 Sagamore Pkwy., W., West Lafayette  
765-463-3638

**Planet Fitness:** 2121 Sagamore Pkwy. S.  
Lafayette, 765-446-6600

**Pure Barre:**  
348 E. State St., West Lafayette, 765-430-1927

**Society Yoga:**  
217 N. 2nd St., Lafayette, 765-412-1908

**Southside Fitness:**  
3667 Braddock Dr. Lafayette, 765-474-0044

**Sunshine Yoga & Wellness:**  
323 Columbia St., Lafayette, 765-239-9774

**Universal Fitness & Training:**  
334 Brown St., West Lafayette, 765-743-9290

**Vasa Fitness:**  
3825 South St., Lafayette, 765-637-7282

**West Lafayette Wellness Center:**  
1101 Kalberer Rd., West Lafayette, 765-269-4950

**YMCA:** (2) locations  
1) 3001 S. Creasy Ln., Lafayette, 765-474-3448  
2) Renaissance Place, 250 Main St., 765-838-3605



# LOCAL LODGING

## PROPHETSTOWN STATE PARK

### Baymont Inn & Suites

765-449-4808

### Best Western Plus

765-446-2400

### Black Blanket Farms Bed and Breakfast

765-479-5202

### Campus Inn

765-743-9661

### Candlewood Suites

765-807-5735

### Comfort Inn

765-447-3434

### Comfort Suites

765-447-0016

### Courtyard by Marriott

765-449-4800

### Days Inn & Suites

765-446-8558

### DoubleTree By Hilton

765-446-0900

### Drury Inn

765-447-5611

### Economy Inn

765-447-3111

### Econo Lodge Inn & Suites

765-447-4142

### Fairfield Inn

765-449-0083

### Four Points By Sheraton

765-463-5511

### Hampton Inn Lafayette

765-447-1600

### Hampton Inn West Lafayette

765-269-8000

### Hilton Garden Inn

765-743-2100

### Holiday Inn City Centre

765-423-1000

### Holiday Inn Express

765-449-4400

### Home2 Suites By Hilton

765-771-7575

### Homewood Suites by Hilton

765-448-9700

### Lincoln Lodge

765-523-2111

### Motel 6

765-447-7566

### Prestige Inn

765-463-1531

### Quality Inn & Suites

765-447-9460

### Red Roof Inn

765-448-4671

### Residence Inn by Marriott

765-479-7208

### Staybridge Suites

765-588-6099

### Super 8

765-447-5551

### TownePlace Suites by Marriott

765-446-8668

### Union Club Hotel (Purdue)

765-494-8922

### The Whitaker Inn

765-441-2010



## VISIT LAFAYETTE-WEST LAFAYETTE

301 Frontage Road, Lafayette, Indiana 47905

765-447-9999 • 800-872-6648

**HOME OF PURDUE.COM**

Published by VLWL. All rights reserved. No part of this publication may be reproduced without prior written permission. Every effort has been made to ensure the accuracy of the publication at the time of printing. The designer and editor shall not be liable for damages arising out of errors or omissions. Printed June 2022.

