

LAFAYETTE-WEST LAFAYETTE

PARKS & RECREATION



TIPPECANOE COUNTY, INDIANA



HOME OF PURDUE.COM



PROPHETSTOWN STATE PARK

INDIANA STATE PARK

in.gov/dnr

Prophetstown State Park:

5545 Swisher Rd., West Lafayette, 765-567-4919

— Explore 15 miles of nature trails lead through tall grass prairies, wooded bluffs, and alongside ponds and wetlands. See exceptional wildlife, wildflowers and more. Enjoy nature and history programs every weekend April-October. The aquatic center features a tube slide, body slide, lazy river, splash zones and zero-entry pool. Take a walk around the Native American village. The Visitor Center displays include live educational animals. Picnic areas offer accessible playgrounds. Four shelter houses and a campground with 110 modern campsites are available for rentals. Gate entrance admission charged. Park is also home to The Farm at Prophetstown, (see NATURE LEARNING). #1

TIPPECANOE COUNTY PARKS

Tippecanoe County Parks and Recreation

4449 SR 43 N., West Lafayette
765-463-2306, tippecanoe.in.gov

Bicentennial Nature Area:

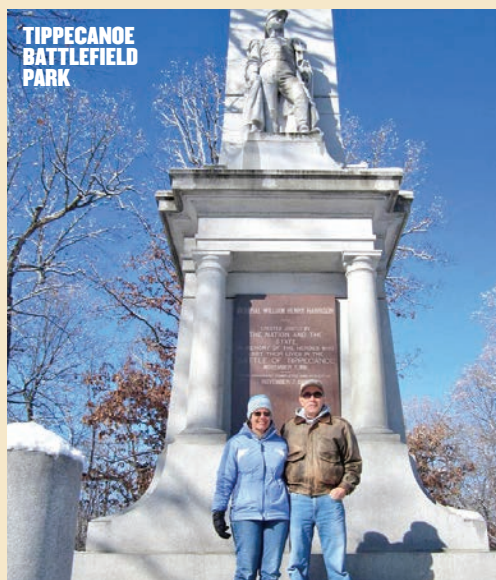
3600 Sagamore Pkwy. N., Lafayette — 196-acres; features a large pond (approximately 70 acres), that allows for limited bank fishing, small boat fishing (electric trolling motors only), kayaks, canoes, paddle boards and windboards. Life jackets are required when on the water and swimming is not allowed. #2

Davis Ferry Park: 3900 N. 9th St., Lafayette — 13 acres; Wabash Riverfront park offering a fishing bridge, boat launch and access to the Wabash Heritage Trail, no restrooms or water are available. #3

Fairfield Lakes: 1998 S. 750 E., Lafayette — 55 acres; 4 stocked lakes with accessible fishing areas and restrooms (see FISHING & BOATING). #4



WILDCAT PARK



Fort Ouiatenon:

3129 S. River Rd. West Lafayette — 34 acres; Wabash Riverfront park with picnic areas, 2 shelter houses, grills, restrooms, boat launch. Contact the Tippecanoe County Historical Association for programming information at 765-476-8411. #5

Goose Island: small island in the Wabash River, 8 miles southwest of downtown — 7.6 acres set aside as a nature preserve, undeveloped and poison ivy proliferates. #6

Heron Island: small island in the Wabash River, just west of Davis Ferry Park — 11 acres set aside as a nature preserve, undeveloped and poison ivy proliferates. #7

Mar Len Park: 5000 S. 150 E., Lafayette — 29 acres; shelter house, picnic areas, hiking, lighted softball diamond, restrooms and access to Wea Creek. #8

Ross Hills Park: 9225 W. 75 S. West Lafayette — 168 acres; 2 picnic shelters, picnic areas, restrooms, trails, deck overlook, volleyball, softball backstop. For shelter reservations and David Ross House rental info, call 765-463-2306. #9

Tecumseh Trails Park: 3800 N. River Rd. West Lafayette — 23 acres; across from Indiana Veterans' Home, overlooks the Wabash River, picnic areas, shelter house and walking trails. #10

Tippecanoe Battlefield Park:

200 Battle Ground Ave., Battle Ground 765-567-6218 — 96 acres; includes an 85 foot tall marble obelisk monument to the Battle of Tippecanoe, the Tippecanoe Battlefield Museum offering exhibits and gift shop (admission charged), Wah-ba-shik-a Nature Center (see NATURE LEARNING), a historic chapel, Pioneer Cemetery, picnic areas, restrooms and Burnett Creek access. Park is trailhead to the Wabash Heritage Trail. For shelter reservations and chapel rental, call 765-463-2306. #11

Tippecanoe County Amphitheater Park:

4449 SR 43 N. West Lafayette — 166 acres; featuring an 1,511 seat amphitheater available to rent for plays, concerts, church services and corporate events. Open turf grass areas, soccer fields and hiking/ biking trail available. #12

Wildcat Park: 201 Eisenhower Rd., Lafayette — 53 acres; confluence of north and south forks of the Wildcat Creek, shelter house, access for canoeing, picnic areas, nature observation, restrooms, grills and accessible fishing pier. #13



BICENTENNIAL NATURE AREA

see map on inside cover for park locations

LAFAYETTE PARKS

Lafayette Parks & Recreation

1915 Scott St., Lafayette, 765-807-1500

lafayetteparks.org



Arlington Park: 1700 Arlington Rd. — 1 acre; multi-age playground, basketball court and tennis courts. **#14**

Armstrong Park: 900 Beck Ln. — 30 acres; 5 lighted tennis courts, 3 basketball courts, 3 baseball fields, playground, fishing pond and 2/3 mile paved trail, restrooms and a 50-seat picnic shelter available for rent. **#15**

CAT Park and Soccer Fields: 3630 McCarty Ln. — 32 acres; 8 soccer fields in various sizes, restrooms and concession building. **#16**

Centennial Park: 500 N. 6th St. — 0.5 acre; multi-age and tot playground, basketball court and picnic shelter. **#17**

Columbian Park and Zoo:
Aquatic Center: 765-807-1531
Administrative Office: 765-807-1500
Zoo Office: 765-807-1540
1915 Scott St. — 40 acres; Loeb Stadium, Columbian Park Zoo, Tropicane Cove Aquatic Center, Veterans Memorial, age-relevant ADA accessible playgrounds, ride-on train, trails, paddle boats, ADA accessible fishing, restrooms, picnic shelters, meeting spaces available for rent, and a carousel (coming soon). **#18**



see map on inside cover for park locations



ARMSTRONG PARK

Crosser Sports Complex: 220 Breckenridge St. — 15-acres; 4 competition-sized, lighted girls' softball fields, restroom/concession/press box building, playground and paved trail surrounding the park. **#19**

Hanna Park: 1201 N. 18th St. — 2.2 acres; multi-age and tot playground, basketball court, tricycle path, educational garden, picnic shelter and grills. **#20**

Hedgewood Park: 1000 Hedgewood Dr. — 1 acre; multi-age playground and open green space. **#21**

Kennedy Park: 2600 Beck Ln. — 7 acres; playground equipment, soccer field and open green space. **#22**

Linnwood Park: 1500 Greenbush St. — 0.5 acre; picnic shelter, playground equipment and basketball court. **#23**

Lyboul Sports Park: 1300 Canal Rd. — 52 acres; includes portions of the Wabash Heritage Trail, 3 lighted softball fields, horseshoe complex, playground, lighted basketball courts, picnic areas and restrooms. **#24**

McAllister Park: 2400 N. 9th St. — 280 acres; model airplane strip, two 18 hole disc golf courses, portions of the Wabash Heritage Trail, Wabash River fishing access and open green space. **#25**

McCaw Park: 3750 Union St. — 26 acres; tot & multi-age playgrounds, 3 youth baseball fields, 12 lighted pickleball courts, picnic areas, grills, open spaces wildflowers, restrooms and 2 picnic shelters with 50-seats each available for rent. **#26**

Munger Park: 3505 Greenbush St. — 32 acres; fishing pond, 1.0 mile paved trail, multi-age and tot playgrounds, picnic areas with grills, restrooms and a 100-seat picnic shelter available for rent. **#27**



Murdock Park: 2100 Cason St. — 39 acres; playgrounds, disc golf course, sled run, basketball court, 0.9 mile interpretive trail, picnic areas, grills and 2 picnic shelters with 50-seats each available for rent. **#28**

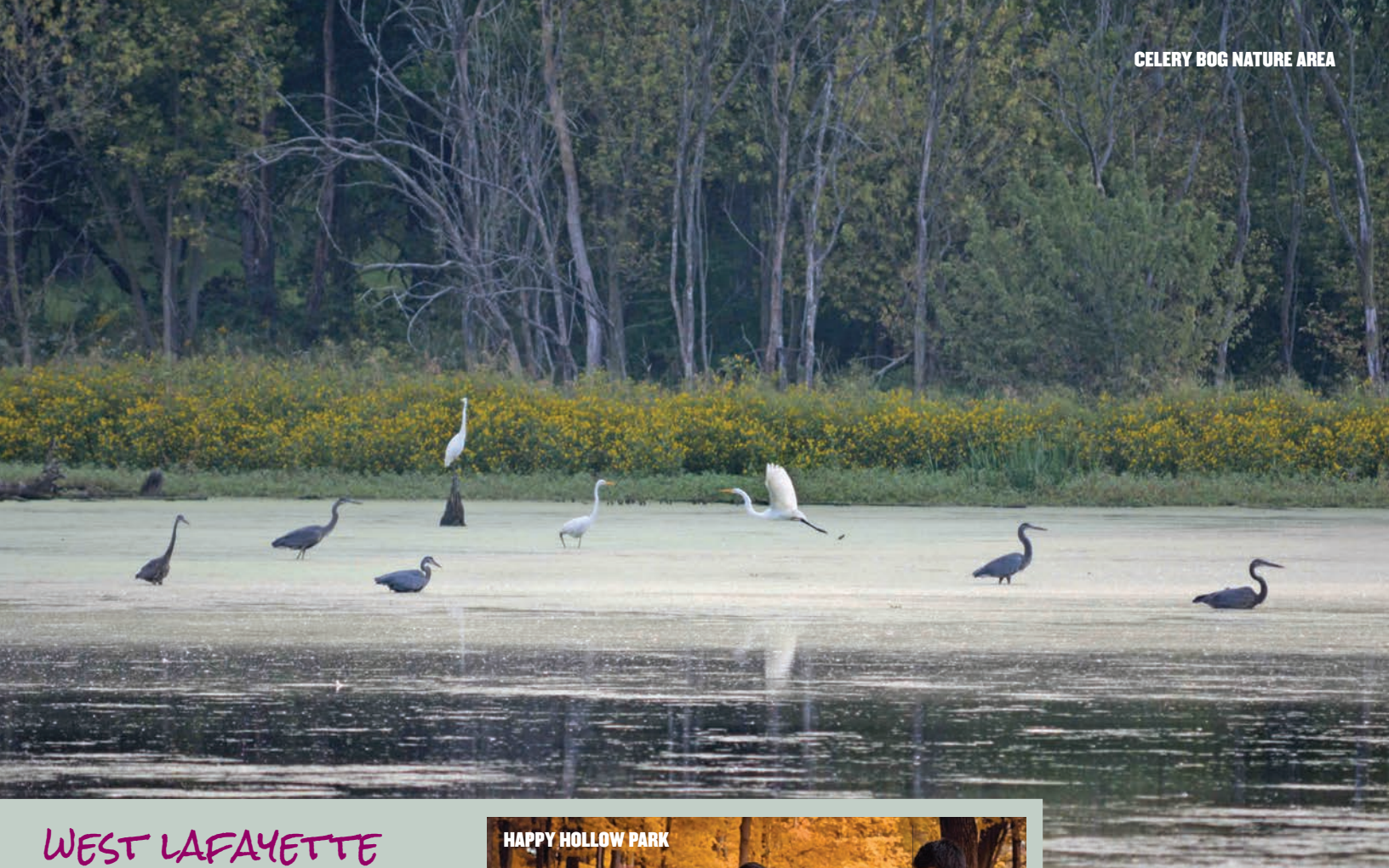
North Darby Park: 14 Darby Ln. — 0.8 acre; multi-age playground, basketball court and open green space. **#29**

Shamrock Park and Dog Park: 115 Sanford St. — 11 acres; multi-age and tot playgrounds, outdoor roller hockey rink, basketball courts, horseshoes, Wabash River fishing & boat ramp, picnic areas with grills, dog park (see below), restrooms and a 50-seat picnic shelter available for rent. **Dog Park:** 765-225-8388 — Tree-lined setting provides park patrons and their dogs with two large fenced areas for large dogs and one fenced area for small dogs. Park users must have a key card to enter. Info for annual pass or a day pass can be found at dogparkinlafayette.org. **#30**

South Tipp Park: 300 Fountain St. — 0.8 acre; multi-age and tot playgrounds, basketball court and picnic shelter. **#31**

Sterling Heights Park: 610 Harrington Dr. — 1 acre; multi-age playground, swings and a picnic shelter. **#32**

Stockton Park: 307 Erie St. — Green space, shelter with picnic tables, swing and spring-rider for small children. **#33**



WEST LAFAYETTE PARKS

West Lafayette Parks & Recreation

1101 Kalberer Rd., West Lafayette
765-775-5110, westlafayette.in.gov/parks

Celery Bog Nature Area:

1620 Lindberg Rd. — 195 acres; over 4 miles of scenic trails through woods and along a marsh, a 1 mile footpath with interpretative signs and home to the Lilly Nature Center (see NATURE LEARNING). **#34**

Cumberland Park: 3101 N. Salisbury St. — 62 acres; over 16 acres of Michaud-Sinninger Woods, nature preserve with a 0.4 mile hiking trail, West Lafayette Wellness Center, 2 lighted softball fields, lighted basketball courts, volleyball court, Kiwanis accessible playground, restrooms and 2 picnic shelters are available for rent. Home of the West Lafayette Farmers Market, runs May-October on Wednesday afternoons. **#35**

George E. Lommel Park: 300 Wilshire Ave. — 5 acres; accessible playground equipment, softball/soccer areas and a picnic shelter. **#36**

Happy Hollow Park: 1301 Happy Hollow Rd. — 81 acres; dog park, accessible playground, picnic shelters available for rent, cookout facilities, restrooms, softball and volleyball areas and 3+ miles of trails, including a section of the Wabash Heritage Trail. **#37**



Lincoln Park: 255 Lincoln St. — 0.5 acres; shelter, playground and picnic area. **#38**

Mascouten Park: 900 N. River Rd. — 15 acres; Wabash Riverfront park with public boat launch and picnic tables. **#39**

Paula R. Woods Park: 309 Lawn Ave. — 0.5 acre; shelter, playground and picnic area. **#40**

Peck-Trachtman Park: 3300 Dubois St. — 2 acres; playground and shelter. **#41**

Tapawingo Park: 100 Tapawingo Dr. — 20 acres; Wabash Riverfront park with picnic tables, accessible playground, band shell shelter, a paved section of the Wabash Heritage Trail and home to Riverside Skating Center (see SKATING). **#42**

Tommy Johnston Park:

200 S. Chauncey St. — 0.5 acre; basketball court, swing set, fitness stations and picnic shelter. **#43**

Trailhead Park:

1450 Kalberer Rd. — 4 acres; picnic shelter and access to the Northwest Greenway Trail. **#44**

University Farm Park:

corner of LaGrange and Hamilton St. — 6 acres; playground and picnic shelter. **#45**



see map on inside cover for park locations

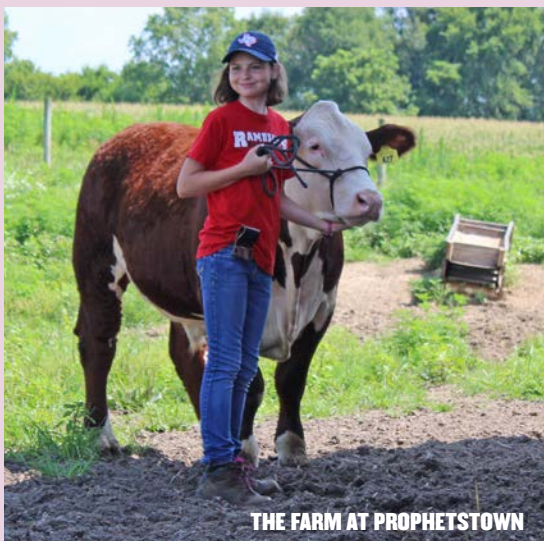


CLEGG MEMORIAL GARDEN

Clegg Memorial Garden: 1782 N. 400 E. Lafayette, 765-423-1605 — Overlooks and runs alongside the Wildcat Creek. Offers a naturalistic setting including prairie and oak savanna restorations, extensive beds of wildflowers, labelled trees, bridges and nature trails. Open during daylight hours, admission is free. **#46**

Columbian Park Zoo: Columbian Park 1915 Scott St., Lafayette, 765-807-1540 columbianparkzoo.org — Indiana's second oldest zoo, showcases 190 animals representing 79 different species. Open seasonally. **#18**

The Farm at Prophetstown: 5545 Swisher Rd., West Lafayette, 765-567-4700 prophetstown.org — A unique experience on all aspects of farm life. Programs revolve around the 1920s farms as they began their transition from animal to tractor power. The Farm is a training farm for sustainable agriculture, homesteading, gardening, canning, as well as farm-to-table cooking, sewing and quilting. It draws on a wide range of resources such as beekeepers, master gardeners, farm experts and home economics experts. Admission is free with state park entry except for special programming and workshops. **#47**



THE FARM AT PROPHETSTOWN

see map on inside cover for locations

Lilly Nature Center and Celery Bog Nature Area:

1620 Lindberg Rd., West Lafayette 765-775-5172, westlafayette.in.gov/parks — Celery Bog Nature Area contains approximately 195 acres of wetlands, adjacent woods and fields. Lilly Nature Center provides an excellent destination where many topics can be studied. A meeting room is available for rent for educational or environmental meetings. Admission is free. **#34**



Murdock Park: 2100 Cason St., Lafayette 765-807-1500 — Occupies 39 acres of urban forest offering a 0.9 mile interpretive trail that identifies nearly 40 varieties of trees. Open during daylight hours. **#28**

Prophetstown State Park: see Indiana State Park. **#1**

Purdue Arboretum: throughout the Purdue University campus, West Lafayette, purdue.edu — Enjoy three walking trails promoting environmental sustainability. Each trail is designed to show the diversity of trees on Purdue's campus. Trees are identified by a small wooden post and a QR code to give smartphone users additional educational information. **#48**

Purdue Horticulture Gardens:

Purdue University, 215 Marsteller St. West Lafayette, 765-494-1296 hort.purdue.edu — Adjacent to the horticulture building, the gardens display a wide diversity of plants, including nearly 200 species of perennials and foliage plants, over 300 cultivars of annuals and vegetables. Self-guided tour booklet available on-site. Admission is free, open during daylight hours. **#49**

Purdue Horticulture Park:

300 McCormick Rd., West Lafayette, purdue.edu — Open landscaped, perfect for picnics, peaceful walks and exploring the beauty of its natural settings. Open during daylight hours, can be reserved for private events. **#50**



Wabash Heritage Trail:

Approximately 18 miles of scenic trailway along Burnett Creek and the Wabash River. The northern trailhead begins at Tippecanoe Battlefield Park in Battle Ground and meanders along Burnett Creek to the Wabash River. It passes along the cities of Lafayette and West Lafayette and ends at Fort Ouiatenon. Trail maps and conditions are available at the Wah-ba-shik-a Nature Center, Tippecanoe Battlefield Park. Please—no horses, bikes or motorized vehicles on the footpath in the rural sections of the trail. Bicycles are permitted on the 5 1/2 miles of paved trail in Lafayette and West Lafayette. Camping is prohibited along the trail. The trail is maintained by all three park departments.

Wah-ba-shik-a Nature Center:

200 Battle Ground Ave., Battle Ground 765-567-2147, tippecanoe.in.gov/parks — Located at Tippecanoe Battlefield Park, features natural history exhibits, small animal taxidermy and wildlife feeding observation. Wabash Heritage Trail maps and conditions are available. Admission is free, open daily mid-April-early November. **#11**

Wolf Park: 4004 E. 800 N., Battle Ground 765-567-2265, wolfpark.org — Dedicated to the conservation of gray wolves, this non-profit park offers a unique opportunity to experience wolves up close with Howl Nights, various programming and guided tours. Admission charged, open May-November. **#51**



WOLF PARK



HIKING & TRAILS

Armstrong Park:

900 Beck Ln., Lafayette — 0.66 mile paved trail.

Celery Bog Nature Area:

1620 Lindberg Rd., West Lafayette — 195 acres; over 4 miles of trails through woods and along a marsh, some paved.

Clegg Memorial Garden:

1782 N. 400 E. Lafayette — 13 acres; wildflowers and lush green trees, open daily until dusk.

Columbian Trail:

Columbian Park, 1915 Scott St., Lafayette — 1.10 mile scenic trail through the park.

Cumberland Park/Michaud-Sininger Woods Nature Preserve:

3101 N. Salisbury St., West Lafayette — 62 acres; paved and footpath trails.

Faith Community Center:

5572 Mercy Way, Lafayette — Paved trail.

Happy Hollow Park:

1301 Happy Hollow Rd., West Lafayette — 81 acres; sections of the Wabash Heritage Trail (see below) paved and a footpath trail.

Linear Park Trail: Lafayette — a 2 mile segment begins at Powerhouse Lane and continues alongside the railroad tracks to S. 18th Street, linking with Armstrong Park. Future plans will connect the trail with Wabash Heritage Trail.

Munger Park: 3505 Greenbush St., Lafayette — 1 mile paved trail.

Murdock Park: 3505 Greenbush St. Lafayette — 0.9 mile interpretive trail.

Northwest Greenway & Cattail Trails:

throughout West Lafayette — connecting trail networks of 8+ miles and 6+ miles respectively.

Prophetstown State Park: 5545 Swisher Rd., West Lafayette — 4 trails totaling 9.75 miles, public restrooms. Park entrance fees apply.

Tapawingo Park: 100 Tapawingo Dr. West Lafayette — Paved, section of the Wabash Heritage Trail (see NATURE LEARNING).

Tippecanoe County Amphitheater Trail:

4449 SR 43 N., West Lafayette — 2 mile, narrow, dirt path built primarily for mountain bike use. Trail closes during special amphitheater events.

Wabash Heritage Trail:

See NATURE LEARNING.

YMCA: 3001 S. Creasy Ln., Lafayette 765-474-3448 – Indoor walking trail



BIKING

Mountain bikes—off road

Five off-road dirt path trails are available;

Haan Trail: trailhead around 331 Valley St. Lafayette — 6 miles, out-and-back, intermediate singletrack trail with rocks, ledges, bridges, whoop-de-dos, benched areas, drop-offs and ramps. Helmets are required and BMX bikes are not allowed. Part of the nature trail coincides with the mountain bike trail, and both riders and hikers must share the trail. Privately owned, a liability form is required, which can be filled out at the Haan Museum of Indiana Art, located at 920 State St., Lafayette.

Hoffman Nature Area: 6935 Old SR 25 Lafayette — 3.5 miles, intermediate to advanced singletrack one-way trail. Trail is shared with hikers.

McCormick Woods Trail:

corner of McCormick Road and Cherry Ln. West Lafayette — 2.7 miles in two loops, intermediate singletrack trail. For the most part the trail is flat, but it has enough elevation changes and whoop-de-dos to make it fun to ride. Trail is shared with hikers. Limited parking.

Murdock Park Trail: 2100 Cason St. Lafayette — 2.6 miles, intermediate/difficult singletrack trail, not for beginners. Trail is shared with hikers.

Tippecanoe County Amphitheater Trail:

4449 SR 43 N., West Lafayette — 3 mile, intermediate singletrack trails. Trail is shared with hikers and cross country runners. Make sure to stay on the trail. Trail closes during special amphitheater events. The Wabash Heritage Trail is close and bikes are not allowed on it.



Paved trailways

Paved portions of the Wabash Heritage Trail and 27 miles of West Lafayette's trail system are available for biking, as well as a 3.5 mile trail at Prophetstown State Park.

Bike clubs

Tippecanoe Mountain Bike Association: tmbanow.com

Wabash River Cycle Club: wrcc-in.org — The club enjoys rides throughout the season. The annual Wabash River Ride offers scenic routes ranging from 32, 65 and 104 miles.

Bike shops & rentals

Hodson's Bay Company: 360 Brown St., West Lafayette, 765-743-3506

Virtuous Cycles: 215 N. 10th St., Lafayette, 765-807-6557



CAMPING

AOK Campgrounds of Lafayette:

225 E. 300 S., Lafayette, 765-474-5030 — Open all year, 125 sites.

Big Fish 'n Campground: 5831 S. 900 E. Lafayette, 765-296-2346 — Open March-October, 70 sites with unlimited overflow.

Ken-do Lake: 9230 Heaton Rd., Clarks Hill 765-523-2744 — Open March-September, 60 sites.

Prophetstown State Park: 5545 Swisher Rd., West Lafayette, 765-567-4919 — Open all year, 110 sites, aquatic center.

Ross Camp: 9225 W. 75 S., West Lafayette 765-463-2306 — Open April-November, 15 sites.

Wolfe's Leisure Time Campground:

7414 Old SR 25 N., Americus, 765-589-8089 — Open all year, Wifi, 130 sites.

Due to Emerald Ash Borers, campers are to pickup their firewood locally and discard any excess upon leaving.



PROPHETSTOWN STATE PARK

RV repair & rental shops

Bill Gardiner's RV Super Center: 510B Veterans Memorial Pkwy. E., Lafayette, 765-447-5111 — repairs and rentals

Huston Electric: 2723 Old Romney Rd., Lafayette 765-474-6115 — generator repairs

JKB Campers: 3425 O'Farrell Rd., Lafayette, 765-447-6060 — repairs

Lafayette Travel Trailer: 2651 Schuyler Ave., Lafayette 765-423-5353 — repairs

AQUATIC RECREATION



FISHING & BOATING

All state regulations & licenses are required unless otherwise noted.



BOATING

Ponds, lakes & creeks

Armstrong Park: 900 Beck Ln., Lafayette
— Community park with accessible pond and restrooms.

Bicentennial Nature Area:
3600 Sagamore Pkwy. N., Lafayette —
70 acre pond that allows for limited bank fishing, small boat fishing (electric trolling motors only), canoes, kayaks, paddle boards and windboards. Life jackets are required when on the water, no swimming allowed. Open during daylight hours.

Big Fish 'n Campground: 5831 S. 900 E. Lafayette — Private pay fishing lake stocked every week during season, no license required, tackle and bait store, firewood, concession, 12 lit acres and open all year; call first during months of November—February.

Columbian Park: 1915 Scott St., Lafayette
— Community park with ponds, ADA accessible fishing and restrooms.

Fairfield Lakes: 1998 S. 750 E. Lafayette — 4 stocked lakes with bass, crappie, catfish and rainbow trout, 2 accessible fishing pads, restrooms, canoes, kayaks, boats with trolling motors are allowed, however no ramps are available.

Faith Community Park:
5526 Mercy Way, Lafayette — Stocked pond.

Ken-do Lake: 9230 Heaton Rd., Clarks Hill
— Private pay fishing lake, stocked every week during season, no license required, tackle and bait store on-site.

Munger Park: 3505 Greenbush St., Lafayette
— Community park with pond, accessible fishing areas and restrooms.

Prophetstown State Park: 5545 Swisher Rd., West Lafayette, 765-567-4919 — Fishing lake, restrooms, regular park entrance fees apply.

Wildcat Park: 201 Eisenhower Rd., Lafayette
— Access to the Wildcat Creek, accessible fishing pier, restrooms, canoe/kayak access only.



Wabash River

Davis Ferry Park: 3900 N. 9th St., Lafayette
— Fishing bridge spanning the river, boat launch and access to Wabash Heritage Trail.

Fort Ouiatenon: 3129 S. River Rd., West Lafayette — Boat ramp, restrooms.

Mascouten Park: 900 N. River Rd., West Lafayette — Boat ramp.

River Junction: 6614 Old SR 25 N., Lafayette
— Private camp located 6 miles north of Lafayette at the confluence of the Tippecanoe and Wabash rivers offers a boat ramp with fees.

Shamrock Park: 115 Sanford St., Lafayette
— Community park with boat ramp.

Tapawingo Park: 100 Tapawingo Dr., West Lafayette — Sandy banks, canoe access only.

Wolfe's Leisure Time Campground:
7414 SR 25 N., Americus — Private camp, boat ramp with fee.



CANOEING & KAYAKING

Wildcat Canoe and Kayak Too:
1850 N. 725 E., Lafayette, 765-589-8081 —
Wildcat Creek rentals.

See FISHING & BOATING for these locations;
Bicentennial Nature Area, Fairfield Lakes, Tapawingo Park, Wildcat Park



PROPHETSTOWN STATE PARK AQUATIC CENTER



SWIMMING

seasonal

Castaway Bay: 601 Beck Ln., Lafayette
765-807-0006 — Outdoor pool, beach-like entrance, spray and play area and water basketball.

Prophetstown State Park Aquatic Center: 5545 Swisher Rd., West Lafayette
765-567-4919 — Tube slide, body slide, lazy river, splash zones and zero-entry swimming pool.

Tropicanae Cove Family Aquatic Center: Columbian Park, 1915 Scott St. Lafayette, 765-807-1531 — Outdoor pool, water slides, kiddie slides, geysers, lazy river and water playground.

Vinton Pool: 3111 Prairie Ln., Lafayette
765-807-0035 — Outdoor pool, beach-like entrance, splashdown slide, water basketball and playful geysers.

West Lafayette Municipal Pool:
1200 N. Salisbury St., West Lafayette
765-775-5129 — 3 outdoor heated pools, baby pool and diving boards.

Wolfe's Leisure Time Campground:
7414 Old SR 25 N., Americus, 765-589-8089 — Private camp with outdoor pool.

year-round

Northend Community Center:
2000 Elmwood Avenue, Lafayette, 765-449-3760 — Indoor Pool.

Parkwest Fitness: 1330 Win Hentschel Blvd., West Lafayette, 765-464-3435 — Indoor pool with water slide, lap swimming, sauna and whirlpool.

West Lafayette Wellness Center:
1101 Kalberer Rd., West Lafayette, 765-269-4950 — Indoor pool with 25-yard lap lanes, walking vortex and zero-depth splash pad.

YMCA: 3001 S. Creasy Ln., Lafayette
765-474-3448 — Indoor pool, lessons and water exercise.

Indiana State fishing license can be purchased at these locations...

Dicks Sporting Goods: 2415 Sagamore Pkwy. S. Lafayette, 765-449-0914

Prophetstown State Park: 5545 Swisher Rd. West Lafayette, 765-567-4919

Meijer: (2) locations
1) 4901 SR 26 E., Lafayette, 765-449-9200
2) 2636 Sagamore Pkwy. W., West Lafayette
765-637-4200

Rural King: 2500 Teal Rd., Lafayette, 765-471-0804

WalMart: (3) locations
1) 4205 Commerce Dr., Lafayette, 765-446-0100
2) 2347 Veterans Memorial Parkway S., Lafayette, 765-477-9379
3) 2801 Northwestern Ave., West Lafayette, 765-463-0201

GOLF



BATTLEGROUND GOLF CLUB



GOLF COURSES

courses that offer Stay & Play Packages
StayandPlayHomeofPurdue.com



❖ Ackerman-Allen Course - Birck Boilermaker Golf Complex:

Purdue University, 1300 Cherry Ln., West Lafayette 765-494-3139, purduegolf.com — 18 holes featuring rolling fairways, lined with mature hardwoods that guard small greens with strategically placed bunkers, proshop, bar & grill, rental clubs and golf instruction. Renovated in 2014 and re-opened in 2016 after being designed by Pete Dye.

❖ Battleground Golf Club:

5505 Pretty Prairie Rd., Battle Ground 765-567-2178, golfbattleground.com — 18 holes featuring mature trees, large sand bunkers and receptive greens, proshop, bar & grill and golf instruction.

❖ Coyote Crossing Golf Club:

5801 Augusta Blvd., West Lafayette, 765-497-1061 coyotecrossinggolf.com — 18 holes designed by Hale Irwin, incorporates the all-natural terrain of open meadows, mature forests and the meandering Burnett Creek, driving range, clubhouse, rental clubs and bar & grill.

❖ Harrison Hills Golf Club:

413 E. New St., Attica, 765-762-1135, harrisonhills.com; 18 holes on over 200 acres just 30 minutes southwest of Lafayette in Attica. Golf instruction, driving range, proshop, restaurant, bar & grill and meeting facilities.

❖ Kampen Course - Birck Boilermaker Golf Complex:

Purdue University 1300 Cherry Ln., West Lafayette, 765-494-3139, purduegolf.com — 18 holes designed by Pete Dye featuring heather rough, waste bunkers, wetlands and scenic views from all locations on the golf course, proshop, clubhouse, driving range, rental clubs, golf instruction and bar & grill.

The Ravines: 8525 Division Rd., West Lafayette, 765-583-1550, ravinesgolf.com — 18 holes, the front nine is set up as a links style course and is greatly influenced by wind and water, the back nine, on the other hand, is shorter, but shot placement is key, the course features bent grass from tee to green, driving range, clubhouse, rental clubs and bar & grill.

West Lafayette Golf and Country Club:

3224 US 52 W., West Lafayette 765-463-2332, wlgcc.com — 18 holes featuring well-manicured fairways and greens, pristine scenery, and challenging sand bunkers and water hazards, driving range, rental clubs, bar & grill and proshop.



DRIVING RANGES

A Gusta Wind: 3816 S. 18th St. Lafayette, 765-471-2405

Tee Off Golf 2 Driving Range: 2378 S. 475 E. Lafayette, 765-202-0072



MINIATURE GOLF

Hole in One Family Fun:

311 Meijer Dr., Lafayette, 765-446-2250

Monster Mini-Golf: 3573 Promenade Pkwy., Lafayette, 765-471-1300 (indoors)



ADDITIONAL RECREATION



BASEBALL & SOFTBALL

Lafayette Aviators: Loeb Stadium at Columbian Park, 1915 Scott St., Lafayette, lafayettebaseball.com — This summer collegiate prospect baseball team is an entertainment destination.

Armstrong Park: 821 Beck Ln., Lafayette — 3 baseball fields.

Cumberland Park: 3101 N. Salisbury St. West Lafayette — 2 lighted softball fields, baseball field.

Faith Community Center: 5526 Mercy Way Lafayette — Softball field.

Family Sports Center: 3242 W. 250 N. West Lafayette — Softball/baseball field.

Loeb Stadium: 1915 Scott St., Columbian Park Lafayette — Baseball field.

Lybolt Sports Park: 1300 Canal Rd., Lafayette — 3 lighted softball fields.

Marlen Park: 5000 S. 150 E., Lafayette — Lighted softball diamond.

McCaw Park: 3745 Union St., Lafayette — 3 lighted youth baseball fields.



BASKETBALL

Arlington Park: 1635 Arlington Rd., Lafayette

Armstrong Park: 821 Beck Ln., Lafayette

Centennial Park: 600 Brown St., Lafayette

Cumberland Park:
3101 N. Salisbury St., West Lafayette

Faith Community Center:
5526 Mercy Way Lafayette, 765-449-4600

Family Sports Center:
3242 W. 250 N., West Lafayette, 765-464-0100

Hanna Park: 1201 N. 18th St., Lafayette

Linwood Park: 1500 Greenbush St., Lafayette

Lybolt Sports Park: 1300 Canal Rd., Lafayette

Mcallister Recreation Center:
2351 N. 20th St., Lafayette, 765-807-1360

Murdock Park: 2100 Cason St., Lafayette

North Darby Park: 14 Darby Ln., Lafayette

Parkwest Fitness: 1330 Win Hentschel Blvd West Lafayette, 765-464-3435

Shamrock Park: 115 Sanford St., Lafayette

South Tipp Park: 300 Fountain St., Lafayette



BASKETBALL CONTINUED

Tommy Johnston Park:
200 S. Chauncey Ave., West Lafayette

West Lafayette Wellness Center:
1101 Kalberer Rd., West Lafayette, 765-269-4950

YMCA:
3001 S. Creasy Ln., Lafayette, 765-474-3448

YWCA: 605 N. 6th St., Lafayette, 765-742-0075



BOWLING

Market Square Lanes: Market Square
2100 Elmwood Ave., Lafayette, 765-447-4106

Mike Aulby's Arrowhead Bowl:
2331 Brothers Dr., Lafayette, 765-477-6500

Union Rack & Roll: Purdue Memorial Union
101 N. Grant St., West Lafayette, 765-494-8990



CLIMBING

Climb Lafayette:
4650 Dale Dr., Lafayette, 765-532-7752



DISC GOLF

Faith Community Center: 5526 Mercy Way Lafayette — 9 hole course.

McAllister Park: 800 Golfview Rd., Lafayette — two 18 hole courses.

Murdock Park: 2100 Cason St., Lafayette — 18 hole course.

Purdue University: 1200 W. Stadium Ave. West Lafayette — two 9 hole courses; one course at Pickett Park and one at Slayter Hill.



JUMPING

Elite Air Trampoline Park:
3832 Fortune Dr., Lafayette, 765-250-3197

Get Air Trampoline Park:
3540 SR 38 E., Lafayette, 765-226-5651



PICKLEBALL

McCaw Park: 3750 Union St., Lafayette

YMCA:
3001 S. Creasy Ln., Lafayette, 765-474-3448

YWCA: 605 N. 6th St., Lafayette, 765-742-0075

Pickleball association

Lafayette Pickleball Association
lipa.wildapricot.org — Offers clinics and strives to provide a healthy, recreational activity for all ages.



RACQUETBALL

Parkwest Fitness: 1330 Win Hentschel, Blvd. West Lafayette, 765-464-3435



PROPHETSTOWN STATE PARK



SKATING

Faith Community Center: 5572 Mercy Way Lafayette, 765-449-4600 — Skate park.

Riverside Skating Center:
100 Tapawingo Dr., West Lafayette, 765-743-7465 — Ice skating, open seasonally.

Shamrock Park: 115 Sanford St., Lafayette — Outdoor roller hockey rink.

Roller skating and blading are allowed on paved portions of the Wabash Heritage Trail and West Lafayette's paved trails.



RIVERSIDE SKATING CENTER



MURDOCK PARK



SLEDDING

Murdock Park: 2100 Cason St., Lafayette — Community park with large hill. A snow machine ensures snow when colder weather prevails. Katy's Cabin offers concessions along with rentals for sledding.

Slayter Hill: Purdue University Stadium Ave., West Lafayette



SOCCER

Bishop Woods: 2500 S. 9th St., Lafayette

CAT Park: 3630 McCarty Ln., Lafayette

Davidson Fields: 850 E. 400 S., Lafayette

Evangelical Covenant Church:
3600 S. 9th St., Lafayette

Faith Community Center:
5526 Mercy Way, Lafayette

Family Sports Center:
3242 W. 205 N., West Lafayette

Kennedy Park: 2600 Beck Ln., Lafayette

Tippco Fields: 3700 N. 50 W., West Lafayette

Soccer association

GLRSA: GLRSA.org



TARGET STRIKING

Applied Ballistics:

3217 Olympia Dr., Lafayette, 765-838-0700

The Spinning Axe:

351 South St., Lafayette, 765-637-7775



TENNIS

Arlington Park: 1700 Arlington Rd.
Lafayette, 765-807-1500 — 3 lighted courts.

Armstrong Park: S. 9th St. and Beck Ln.
Lafayette, 765-807-1500 — 5 lighted courts.

Cumberland Courts: 600 Cumberland Ave.
West Lafayette — 10 lighted courts.

Happy Hollow School: 1200 N. Salisbury
St., West Lafayette — 4 courts.

Sunnyside Middle School:
530 N. 26 St., Lafayette — 6 courts.



WELLNESS CENTERS

A. H. Ismail Center: Lyles-Porter Hall
715 Clinic Dr., West Lafayette, 765-496-1015

Absolute U Fitness:
2529 Schuyler Ave., Lafayette, 765-418-1900

Anytime Fitness:
3230 Daugherty Dr., Lafayette, 765-471-4582

Be Moved Power Yoga: 3451 Wyndham Way
West Lafayette, 765-588-6657

Boxfit: 3540 S.R. 38 E., Lafayette, 765-838-2368

CrossFit:
304 Brown St., West Lafayette, 765-421-6424

Curves:
2200 Elmwood Ave., Lafayette, 765-448-9589

Faith Community Center:
5572 Mercy Way, Lafayette, 765-449-4600



WELLNESS CENTERS CONTINUED

Faith West Community Center:

1920 Northwestern Ave., West Lafayette
765-449-3750

Family Sports Center:

3242 W. 250 N., West Lafayette, 765-464-0100

Fit4Ever Health & Wellness:

120 S. River Rd., West Lafayette, 765-404-0568

Hotworx: 2410 N. Salisbury St., West Lafayette
765-340-1468

Iron Phoenix:

2200 Elmwood Ave., Lafayette, 765-714-4906

Lifelong Fitness:

11 Shenandoah Dr., Lafayette, 765-448-1981

McAllister Recreation Center:

2351 N. 20th St., Lafayette, 765-807-1360

Metamorphic Fitness:

200 Farabee Dr. N., Lafayette, 765-543-1259

Miracles Fitness: 257 Sagamore Pkwy. W.
West Lafayette, 765-463-3638

MyGym Children's Fitness Center:

2049 Veterans Memorial Pkwy. S., #3
Lafayette, 765-807-5441

Orangetheory Fitness: 1020 D Sagamore
Pkwy., W., West Lafayette, 765-575-4944

Parkwest Fitness: 1330 Win Hentschel
Blvd., West Lafayette, 765-464-3435

Performance Pilates Studio:

257 Sagamore Pkwy., W., West Lafayette
765-463-3638

Planet Fitness: 2121 Sagamore Pkwy. S.
Lafayette, 765-446-6600

Pure Barre:

348 E. State St., West Lafayette, 765-430-1927

Snap Fitness:

- 3 locations;
1) 3830 South St., Lafayette, 765-448-3219
2) 2060 US 52 W., West Lafayette, 765-463-3219
3) 2049 Veteran's Memorial Pkwy., 765-474-3219

Society Yoga:

217 N. 2nd St., Lafayette, 765-412-1908

Southside Fitness:

3667 Braddock Dr. Lafayette, 765-474-0044

Sunshine Yoga & Wellness:

323 Columbia St., Lafayette, 765-239-9774

Universal Fitness & Training:

334 Brown St., West Lafayette, 765-743-9290

Vasa Fitness:

3825 South St., Lafayette, 765-637-7282

West Lafayette Wellness Center:

1101 Kalberer Rd., West Lafayette, 765-269-4950

YMCA:

- (2) locations
1) 3001 S. Creasy Ln., Lafayette, 765-474-3448
2) Renaissance Place, 250 Main St., 765-838-3605

LOCAL AREA LODGING

hotels that offer Stay
& Play Golf Packages ❖

Baymont Inn & Suites
765-449-4808

Best Western Plus
765-446-2400

**Black Blanket Farms
Bed and Breakfast**
765-479-5202

Campus Inn
765-743-9661

Candlewood Suites
765-807-5735

Comfort Inn
765-447-3434

Comfort Suites
765-447-0016

❖ **Courtyard by Marriott**
765-449-4800

Days Inn & Suites
765-446-8558

DoubleTree By Hilton
765-446-0900

Drury Inn
765-447-5611

Economy Inn
765-447-3111

Econo Lodge Inn & Suites
765-447-4142

Fairfield Inn
765-449-0083

Four Points By Sheraton
765-463-5511

❖ **Hampton Inn Lafayette**
765-447-1600

Hampton Inn West Lafayette
765-269-8000

Hilton Garden Inn
765-743-2100

Holiday Inn City Centre
765-423-1000

Holiday Inn Express
765-449-4400

Home2 Suites By Hilton
765-771-7575

❖ **Homewood Suites by Hilton**
765-448-9700

Lincoln Lodge
765-523-2111

Motel 6
765-447-7566

Prestige Inn
765-463-1531

Quality Inn & Suites
765-447-9460

Red Roof Inn
765-448-4671

❖ **Residence Inn by Marriott**
765-479-7208

Staybridge Suites
765-588-6099

Super 8
765-447-5551

TownePlace Suites by Marriott
765-446-8668

Union Club Hotel (Purdue)
765-494-8922

❖ **The Whitaker Inn**
765-441-2010

VISIT LAFAYETTE-WEST LAFAYETTE

301 Frontage Road, Lafayette, Indiana 47905

765-447-9999 • 800-872-6648

HOME OF PURDUE.COM