

SNOWMOBILING

in New Hampshire's White Mountains

White Mountains Visitor Center
200 Kancamagus Highway/Rte 112
North Woodstock, NH 03262
603-745-8720
VisitWhiteMountains.com

Northeast Snowmobile & ATV Rentals
(800) 458 1838
177 Main Street, Gorham, NH 03581
northeastsnowmobile.com

One location in New Hampshire and one location in Maine for beautiful riding. You can access the largest trail systems and the best terrain in the area. All rentals include a helmet, for your safety. Snowmobile clothing available for rent as well.



Northern Extremes Snowmobiling
(603) 374 6000
1328 US Route 302, Bartlett, NH 03812
2267 Main Street, Bretton Woods, NH 03575
nxtsnow.com

Two locations! The Bartlett Trail System features 50+ miles of trails and is perfect for families and first-time or less-experienced riders. The Bretton Woods location offers hundreds of miles of groomed trails and is the gateway to the Great North Woods. First-time riders are required to take a guided tour before going self-guided. Previous snowmobile experience is required for self-guided snowmobile rentals.



SledVentures
(603) 238 2571
514 US Route 3, Lincoln NH 03251
nhsledventues.com

A great sled adventure based on your level of riding ability. Sure to be an exciting adventure on tracks with friendly service, all necessary gear and professional guides provided.



Other Rentals & Guided Tours

Outback Kayak – Lincoln
Hammer Down Adventures – Littleton
Bear Rock Adventures – Pittsburg
Lopstick Rentals – Pittsburg
Trailside Rentals & Sales – Pittsburg

Sales, Repairs & Parts

Jericho Outdoors – Berlin
Profile Powersports – Conway
Moms – Groveton
Naults Powersports – Littleton
Garneau's Garage – Twin Mountain

Registration Agents

Ashland Lumber – Ashland
Jericho Outdoors – Berlin
Town Clerk – Campton
Army Barracks – Conway
Moore Dam Honda – Littleton
DU-EZ In & Out – Lisbon
Rands Hardware – Plymouth
Town Clerk – Woodstock

For a full list of Registration Agents:
wildlife.state.nh.us/ohrv/agents.html



SNOWMOBILING

in New Hampshire's White Mountains

White Mountains Visitor Center
200 Kancamagus Highway/Rte 112
North Woodstock, NH 03262
603-745-8720
VisitWhiteMountains.com

Resources

NH Bureau of Trails – info on grants, laws, clubs, trail maintenance, trail etiquette, and trail tips. nhstateparks.org/about-us/trails-bureau/laws/snowmobiling

NH Fish and Game – OHRV & snowmobile information including fees, registration requirements, rentals, safe riding tips, safety education, and where to ride.

wildlife.state.nh.us/ohrv/

NH Snowmobile Association – request a printed map, online interactive map, or obtain location information. Downloadable snowmobile trail App available. nhsa.com

NH State Parks – interactive online map and weekly trails report/conditions
nhstateparks.org/experience
nhstateparks.org/Activities/snowmobiling/trail-information.aspx

Snowmobile Safety Education

State law requires that all operators 12 years of age and over must possess either a valid Motor Vehicle Driver's License or must have successfully completed an approved OHRV or Snowmobile Safety Education Class when operating off their own property. The safety certificate is valid for both OHRV and snowmobile operation; two separate courses are not required.

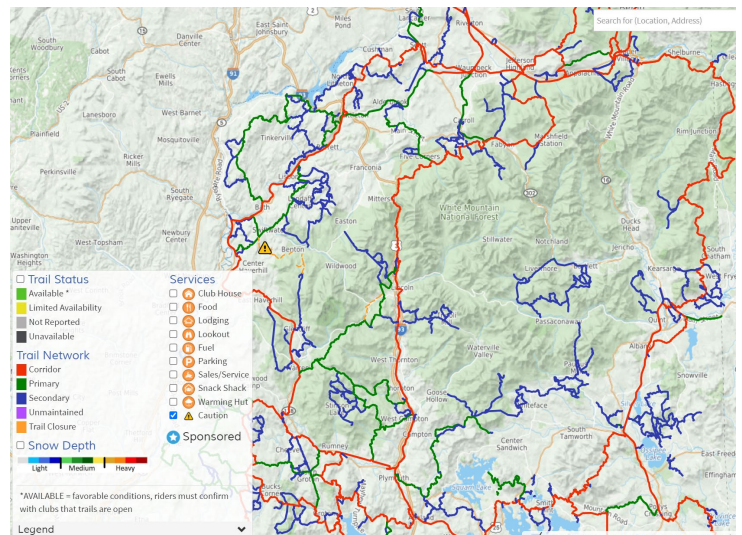
wildlife.state.nh.us/ohrv/education.html

Regional Corridor Trails

Ammoonusuc Rail Trail	Corridor 19
Corridor 5	Corridor 19A
Corridor 5A	Franconia Notch Rec Path
Corridor 8	Presidential Rail Trail
Corridor 11	Warren Rail Trail
Corridor 12	
Corridor 12A	

Snowmobile Clubs

White Mountain Trail Club – Bartlett
White Mountain Ridge Runners – Berlin
Central NH Snowmobile Club – Campton
Snoward Bound Snowmobile Club – Conway
Dalton Ridge Runners – Dalton
Presidential Ridge Runners – Gorham
Jefferson Hi-Landers – Jefferson
Lancaster Snow Drifters – Lancaster
White Mountain Snowmobile Club – Lincoln
Lisbon Stump Jumpers – Lisbon
CT Valley Snowmobile Club – Haverhill
Mountain Meadow Riders – North Conway
Connecticut Valley Snowmobile Club – N. Haverhill
Snow Drifters Snowmobile Club – Rumney
Twin Mountain Snowmobile Club – Twin Mountain
Asquamchumauke Valley Snowmobile Club – Warren
Whitefield Sno-Kings - Whitefield



An interactive trail map is available at: nhsa.evtrails.com/#

