

# WICHITA

ATTRACTIONS

| DINING

| ENTERTAINMENT

| SHOPPING

25221 Neg Em 34455

25221 Neg Em 34455

25221 Neg Em 34455



25221 Neg Em 34455

25221 Neg Em 34455

25221 Neg Em 34455



What's there to do in Wichita, the Heart of the Country?

[VisitWichita.com](http://VisitWichita.com)



## WHAT'S THIS FLAG?

You have likely seen the red, white and blue banner waving around the city – a sense of civic pride in Wichita. Here's a little more about it:

- Alternating red and white rays symbolize the path of **freedom** to come and go as one pleases
- The blue disc represents **happiness** and **contentment**
- Stitched on the blue circle is a Navajo symbol for "hogan" or permanent **home**
- Wichita's city flag was officially adopted in 1937



# INSIDE

- 2 The Heart of the Country
- 4 Keeper of the Plains
- 6 Family Fun Guide
- 8 Outdoor + Wildlife
- 10 Sports + Recreation
- 12 Museums
- 14 Art + Galleries
- 16 Performing Arts
- 20 Wichita's Core
- 24 Dining
- 26 Cheers!
- 28 Nightlife
- 30 Shopping
- 32 Hotels
- 34 Annual Festivals
- 36 Best of Instagram

**Wichita Visitor Information Center**  
515 S. Main, Ste. 115  
Wichita, KS 67202  
316-265-2800

**COVER PHOTO CREDITS:**  
Visit Wichita, Merrill Thomas, Cocoa Dolce, Gavin Peters

Designed by Visit Wichita and printed by Valley Offset



Wichita Official Visitors Guide © 2022. All rights reserved. Printed in U.S.A. Reproduction without permission is strictly prohibited. Every effort has been made to ensure the accuracy of the information in this publication. Please contact the individual establishments or Visit Wichita to confirm information. Unless otherwise noted, the attraction establishments listed may charge admission fees.



HOME GROWN

# BE INSPIRED

THE FALL/WINTER 2022-23 OFFICIAL WICHITA VISITORS GUIDE IS THE MOST COMPREHENSIVE SOURCE OF VISITOR INFORMATION AVAILABLE.

Wichita is a place where art aficionados, history lovers, self-proclaimed foodies and outdoor adventurers all find a lot to love. From unique experiences with wildlife to endless opportunities to immerse yourself in arts and culture, there is plenty to explore.

There's a ton of great information here – but more than inform you, it's meant to inspire you.

Before you head to Wichita, spend some time on VisitWichita.com to start planning your adventure in the Heart of the Country. You'll find inspiration on things to do and where to eat, sample itineraries, travel tools, guidance on where to stay and more.

SUSIE SANTO  
President & CEO, Visit Wichita

Find, Follow,  
Share with Us

@VisitWichita



## Events

Looking for the latest information on events? Scan here



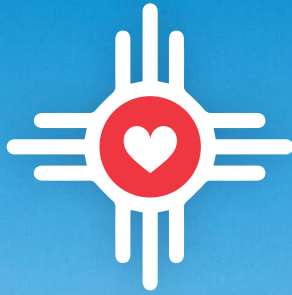
Plan your trip at [VisitWichita.com](https://www.visitwichita.com), Wichita's top online resource for visitor information. Find the latest:

- sample itineraries
- great hotel options
- interactive maps
- blog articles





Rent from **WSU Rowing Boats & Bikes** or **SUPWichita** to go kayaking or ride stand-up paddleboards (SUP) on the Little Arkansas River



**WICHITA**  
THE  
*Heart*  
OF THE COUNTRY





WELCOME TO WICHITA.  
 WE INVITE YOU TO GET TO KNOW  
 Our Places. Our Faces.  
 Our **Hearts.**



Wichita, **the Heart of the Country**, is the largest city in Kansas. Our vibrant city radiates friendliness and ingenuity as the **Air Capital of the World**. From the passionate locals you meet at the 50-plus attractions to the 1,200-plus eateries, kindness and energy greets you at every turn.

The **Keeper of the Plains**, a 44-foot steel sculpture, looms tall with outstretched arms and is the most recognized symbol of the city's traditions. Today he gives the community and those who visit it a sense of unity, belonging, and optimism.

Visitors also love the diversity of experiences from behind-the-scenes **animal encounters** and innovative **breweries** to dynamic **concert venues** and multiple **shopping districts**.

Visit Wichita, today, and fall in love with our city. Learn more at **VisitWichita.com** or find us on social media at **#heartofthecountry**.



**Meet a Local**  
**JUNETTA EVERETT**  
*Community Leader*

I can't imagine living in any other city but Wichita given that I have become accustomed to its size, politics, traffic, opportunities and both the like- and different-minded people.

Wichita is diverse in general, including in food, people, things to do – you name it! You just need to know what you want and don't want and understand its true heart.

Greater Wichita Partnership



**Meet the people and places who make Wichita so special.**

# WAYS TO EXPERIENCE



## RING OF FIRE

The **Keeper of the Plains** is majestic in any light, but it is most impressive to see during the 15-minute ring of fire at 7 p.m. (fall and winter) or 9 p.m. (spring and summer) weather permitting.

## CULTURAL CENTER

The American Indian sculpture was created by Native American internationally-acclaimed local artist Blackbear Bosin (1921-1980). The **Mid-America All-Indian Museum** houses one of the largest Blackbear Bosin collections, a gallery of nations and a gift shop featuring artists' works.

© Gavin Peters

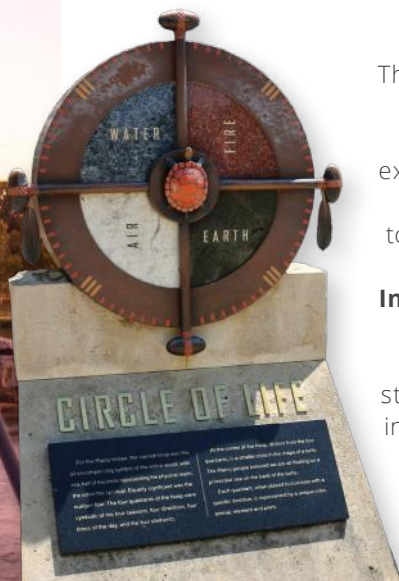


© Gavin Peters

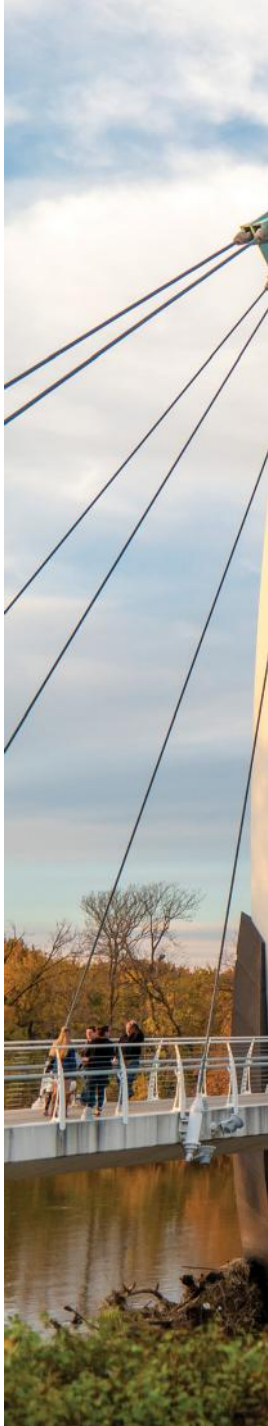


## PLAZA AREA

The sculpture is surrounded by **Keeper of the Plains Plaza**, which features exhibits depicting the Plains Indians' way of life. Access to the plaza area is through the **Mid-America All-Indian Museum** during the day or through two bow-and-arrow-inspired cable-stay bridges from either the intersection of west Central Avenue and Nims Avenue or on McLean Boulevard.



© Visit Wichita (right), Mickey Shannon (far right/top)



Make sure you visit the pride of the city and  
the most photographed attraction in town

# KEEPER OF THE PLAINS



## PRIDE OF WICHITA

One of the most iconic images of Wichita, the **Keeper of the Plains** is a 44-foot, 5-ton weathered steel sculpture looming tall with outstretched arms. This gift gives the community and those who visit it a sense of unity, belonging and peace.



# 6

## KID-FRIENDLY PLACES TO GRAB A BITE

Planes land near your table at **Stearman Field Bar & Grill**

**Old Mill Tasty Shop**, a Wichita tradition

Breakfast all day, old-fashioned sodas and poodle skirts at **Jimmie's Diner**



THE DONUT WHOLE

Famously decorated donuts at **The Donut Whole**

Decadent chocolates, gelato and more at **Cocoa Dolce Chocolates**

Kid-approved pies at **Ziggy's Pizza**

## ACTIVE ADVENTURER

- Chicken N Pickle
- Bar2Bar MX Park
- Bliss Climbing & Fitness
- Aviate Extreme Air Sports
- Urban Air Trampoline Park
- Wichita Ice Center



CHICKEN N PICKLE

## OUTDOOR EXPLORER

- Botanica Wichita
- O.J. Watson Park
- Sedgwick County Zoo
- Tanganyika Wildlife Park



EXPLORATION PLACE

## INTERACTIVE EXPLORER

- Field Station: Dinosaurs
- Exploration Place
- Blade & Timber or Axe to Grind
- B-29 Doc Hangar, Education and Visitors Center
- Kansas Aviation Museum



KANSAS AVIATION MUSEUM

FIELD STATION: DINOSAURS



Danielle Robinson



# FAMILY FUN GUIDE



## TOP 10 FREE ACTIVITIES FOR FAMILIES

1. Ring of Fire at the **Keeper of the Plains Plaza**
2. Drive around and look at **holiday light displays**
3. **Wichita Art Museum**, Saturdays are always free
4. Explore the **Original Pizza Hut Museum** on the campus of Wichita State University
5. Always-free outdoor sculpture collection at **Ulrich Museum**
6. Exhibits and trails at **Great Plains Nature Center**
7. Burn energy at **Advanced Learning Library's STEAM Learning Garden**
8. Sundays at **Wichita-Sedgwick Co. Historical Museum** are free through 2022
9. Discover **murals** and **bronze sculptures** around downtown
10. Experience **Old Cowtown Museum**, Sundays are free

- Mid-America All-Indian Museum
- The Kansas African American Museum
- Museum of World Treasures
- Old Cowtown Museum
- Wichita-Sedgwick County Historical Museum
- Great Plains Transportation Museum

## INDOOR FUN

- Dave & Buster's
- Alley Indoor Entertainment
- Northrock Lanes
- West Acres Bowling
- All Star Sports/Adventures



## ARTSY

- CityArts
- Mark Arts
- Wichita Art Museum
- Ulrich Museum of Art
- Board & Brush
- Paint the Towne



Scan here  
for more  
family-friendly  
ideas

# FALL/WINTER OUTDOOR ACTIVITIES

## PUMPKIN PATCHES

- Applejack
- Cedar Creek Farm
- Klausmeyer Dairy Farm
- Marietta Farm
- Meadowlark Farm
- Mr. Gourdman's

## HAUNTED HOUSES

- **13 Sinister Souls**
- **Field of Screams** and Clown Town
- Wicked Island at **O.J. Watson Park**

## CARRIAGE RIDES

- Holiday horse-drawn carriage rides at **Bradley Fair**
- **Old Town Square** carriage rides

## LIGHT DISPLAYS

- Wild Lights at **Sedgwick County Zoo** (fall)
- Illuminations at **Botanica Wichita** (holiday)
- Safari of Lights at **Tanganyika Wildlife Park** (holiday)
- **Lights at Ability Point** (formerly The Arc's Lights; holiday)

For an interactive map of all the best places to see Christmas lights in Wichita, scan here:



## SEDGWICK COUNTY ZOO

- One of the Top 10 largest zoos in the U.S. and the state's most-visited outdoor attraction
- Home to more than 3,000 animals
- Named one of the "10 Best Attractions in Kansas" by *USA Today*
- Ride Safari Express, an electric train around the zoo or try the new Stingray Cove experience April through October



Sedgwick County Zoo



REDBUD TRAIL

## THREE GREAT PARKS TO LEARN

### McAdams Park

- See the life-size sculpture of baseball legend **Jackie Robinson**
- Features hike and bike trails, a playground and football field named after Wichita native **Barry Sanders**

### Hattie McDaniel Memorial

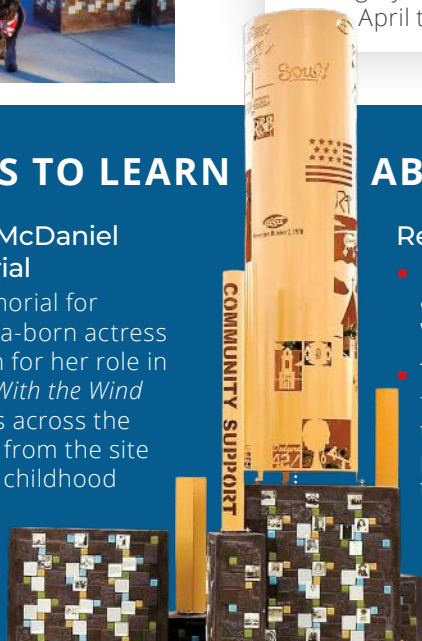
- A memorial for Wichita-born actress known for her role in *Gone With the Wind* stands across the street from the site of her childhood home

## ABOUT LOCAL BLACK HISTORY

### Redbud Trail

- 11.5 miles of this biking and walking trail fall within the city
- Three art and history-filled rest plazas tell the stories of the people who live in those neighborhoods:
  - 9th & Hillside
  - 13th & Roosevelt
  - 17th & Oliver

- Intersects with **K-96 Bicycle Path** which links to **McAdams Bike Path** and more
- Memorializes the 1965 Piatt Street KC-15 plane crash and the success stories of mostly African American local elected officials, famous athletes and business owners





One-of-a-kind Asian Lantern sculptures light up the zoo at *Wild Lights*

McLinda Schmyder

# OUTDOOR+WILDLIFE

## VETERANS MEMORIAL PARK

- Features 19 memorials representing six wars and every branch of the military
- This 4.5-acre park is just one of three in the country that houses a **Berlin Airlift Memorial**

## GREAT PLAINS NATURE CENTER

- Investigate native Kansas wildlife while discovering the 240-acre **Chisholm Creek Park** via two miles of trails through wetlands, prairie and riparian habitats



Ty Nigh

CENTRAL RIVERSIDE PARK

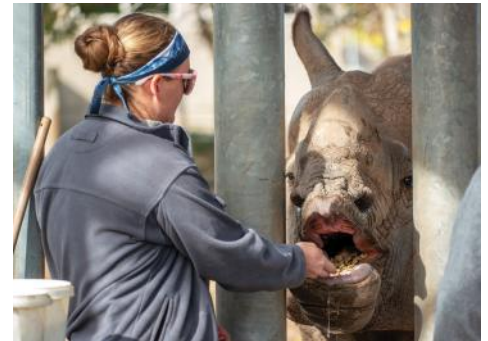
## RIVERSIDE PARK

- Play and explore at the **Kansas Wildlife Exhibit** in **Central Riverside Park**, one of three separate park areas in the heart of the city which features more than 25 species in eight naturalistic enclosures



## TANGANYIKA WILDLIFE PARK

- Touch and feed many of the animals in its collection, including the ring-tailed lemurs, lorikeets and the pygmy hippopotamuses
- Go behind-the-scenes with a rare okapi or swim with African penguins
- Winter season runs through Nov. 13. Check website for fall dates/hours





For a complete list of golf courses, go to [VisitWichita.com/golf](http://VisitWichita.com/golf)

ARTHUR B. SIM GOLF COURSE



City of Wichita Park & Rec, Jason Kruse

## RECREATION

### Trampoline Parks

Jump into an indoor playground at **Urban Air Adventure Park** or **Aviate Extreme Air Sports**, featuring rope courses, foam pits, dodgeball, obstacle courses and more

### All Star Sports and All Star Adventures

Head indoors for family fun with arcade games, bumper cars or laser tag (west location)

### Golf Courses

Try disc golf, FootGolf, neon night golf or stick with traditional golf at one of the municipal courses

### Bowling

- **Northrock Lanes**, the largest bowling center in the state, has an arcade and **The Northrock Bar and Grill**
- **West Acres** offers both bowling and cosmic bowling Friday and Saturday evenings
- Bowl or ride the electric go-karts at **The Alley Indoor Entertainment**

### Wichita Ice Center

Grab your ice skates or rent some for recreational skating, speed skating or hockey

### Bliss Climbing and Fitness

Wichita's only full-service, indoor rock climbing gym with 38-foot top-rope and lead climbing area, and a 15-foot bouldering area with top-outs



WICHITA ICE CENTER

## UPCOMING EVENTS

### Prairie Fire Marathon

Wichita is home to a Boston qualifier, the **Prairie Fire Marathon**, Oct. 9



Prairie Fire Marathon

### NHL Frozen Face Off

Arizona Coyotes and St. Louis Blues will face off in the first-ever NHL game in Wichita Sept. 24 at **INTRUST Bank Arena**

Check [VisitWichita.com/events](http://VisitWichita.com/events) for the most up-to-date information on sporting and other events happening in Wichita



# SPORTS+RECREATION



MeLinda Schnyder

## PRO SPORTS

### WICHITA FORCE

Catch fast-paced, high-scoring indoor football at **Wichita Ice Center**

### WICHITA WINGS

This Major Arena Soccer League team plays its home games at **Hartman Arena**



Wichita Force

### WICHITA WIND SURGE

- Minor League Baseball is back in downtown with the Double-A Wichita Wind Surge at the new, state-of-the-art **Riverfront Stadium**
- Experience fan-friendly amenities such as a play area for kids, fireworks on Friday nights and concession stands with field views

### WICHITA THUNDER

The Thunder, a minor-league ECHL team that plays at **INTRUST Bank Arena**, has won three championship titles, and has ranked in the top three in the league 12 times since 1992

CHARLES KOCH ARENA



WSU Athletics

## COLLEGE SPORTS

Wichita is home to the **Wichita State University Shockers**, **Friends University Falcons** and **Newman University Jets**



Scan here for sporting event details

# MUSEUMS ON THE RIVER

*Follow the scenic Arkansas River's path through the heart of Wichita and encounter these six impressive museums on the river*

## OLD COWTOWN MUSEUM

Immerse yourself in the sights, sounds and activities common to a Midwestern cattle town. Celebrate the holidays in old-fashioned style during Victorian Christmas



## BOTANICA WICHITA

Let one million lights and luminaries put you in the holiday spirit with Illuminations, Botanica's sparkling wonderland of synchronized lights set to holiday music



## WICHITA ART MUSEUM

Get lost in one of the state's largest art museums housing one of the country's finest collections of American art and three centuries of paintings and sculptures



## EXPLORATION PLACE

Inspiring the next generation of scientists and engineers, Exploration Place is the state's premier science center



## MID-AMERICA ALL-INDIAN MUSEUM

See traditional American Indian artifacts and artwork, shop for authentic clothing, jewelry, gifts and more



## WICHITA BASEBALL MUSEUM

Uniforms, photos and other artifacts chronicle Wichita's storied baseball history inside this museum that opened in summer 2022 at Riverfront Stadium



## ARCHITECTURAL WONDER

### FRANK LLOYD WRIGHT'S ALLEN HOUSE MUSEUM AND STUDY CENTER

- One of two iconic architect Frank Lloyd Wright's masterpieces in Wichita. The second is the Corbin Education Center at Wichita State University
- This iconic Prairie-Style home is open to the public through regularly offered tours, special events or for private tours scheduled in advance



### MUSEUM OF WORLD TREASURES

Explore one of the most complete T-Rex fossils in the world, marvel at Egyptian mummies and enter the battlefields of the world wars

# MUSEUMS

## THE KANSAS AFRICAN AMERICAN MUSEUM

Displays stories of African Americans in Kansas and the impact of segregation in Wichita



## KANSAS AVIATION MUSEUM

Preserves the heritage of Kansas aviation, proudly displaying 40 historical planes and a tourable control tower

## B-29 DOC HANGAR & EDUCATION CENTER

Wichita is home to one of only two airworthy Boeing B-29s left in the world, nicknamed Doc



## WICHITA-SEDGWICK COUNTY HISTORICAL MUSEUM

Get in free on Sundays this year and see the museum's collection of 70,000 artifacts embodying the area's vibrant history from its settlement in the 1860s to the era of aviation and electric guitars

### Off-the-beaten path museums worth a look

- 1** Kansas Firefighters Museum and Fallen Firefighters Memorial
- 2** Great Plains Transportation Museum
- 3** The Original Pizza Hut Museum





FRONT PORCH PROJECT



GALLERY ALLEY

# PUBLICART

## Streetscapes

More than 30 bronze sculptures sit along the sidewalks and urban parks on Douglas Avenue

## Front Porch Project

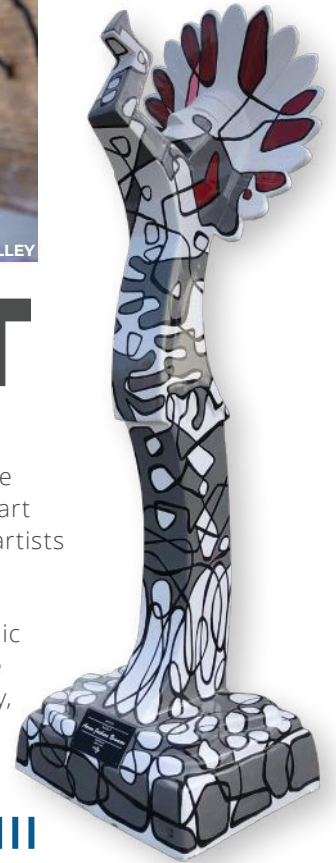
Relax on a creative and comfortable outdoor extension to six local eateries and shopping boutiques

## Gallery Alley

This unique playground for the senses features intersensory art installations created by local artists

## Keepers on Parade

Mini versions of the city's iconic Keeper of the Plains sculpture are placed throughout the city, each created by a local artist with a unique design



Photos by Wichita Art Museum, CityArts, Downtown Wichita, Mark Arts, Downtown Wichita, Envision Arts Gallery



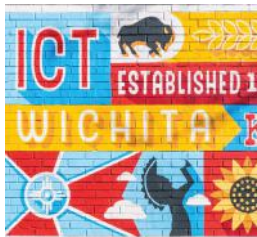
## MURALS AROUND TOWN

Find murals for selfies throughout the city, with clusters along Douglas Avenue from Washington to Oliver streets, and in north Wichita's NoMar District



## FIRST FRIDAY ART CRAWL

Celebrate art on the first Friday of each month with special showings and receptions of local artists, all free to the public







## WICHITA ART MUSEUM

One of the state's largest art museums offers free entry on Saturdays to see a top-tier permanent collection of American art spanning three centuries—masterpieces by Cassatt, Hopper, Russell and Chihuly, among others



## CITYARTS

A community arts center offering classes, workshops, events and gallery exhibitions

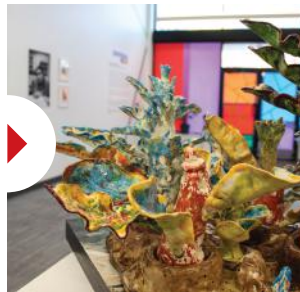


## MARK ARTS

The region's art hub for classes and workshops in a variety of mediums, events and exhibits ranging from local to internationally juried shows

## ENVISION ARTS GALLERY AND ENGAGEMENT CENTER

The nation's first art gallery made by and for artists who are blind or visually impaired



**Meet a Local**  
**RACHEL DOWNS**  
Local Artist

Many of the murals that have been installed downtown are beautiful and effective. When I moved here, downtown looked a little deserted, and now it has a very desirable draw and energy to it. I am excited about that.

## ART GALLERIES

From **Karg Art Glass** and **Infinity Art Glass**, Wichita has dozens of art galleries

## ULRICH MUSEUM OF ART

- The region's source for modern and contemporary art including the Martin H. Bush Outdoor Sculpture Collection spread across Wichita State University

# 8 MUST-VISIT PERFORMING ARTS

## DUNBAR THEATRE

- Opened in 1941, the theater was a welcome performing arts venue for African Americans to perform and go to during segregation
- Volunteers are restoring the building to use as a community-based cultural performing arts center



Stephen Pierce

## BALLET WICHITA

One of the city's treasured cultural events, *The Nutcracker* is performed with a full symphony orchestra and guest artists from across the country

## MOSLEY STREET MELODRAMA

Boo the villain and cheer the hero at Wichita's only audience-participation dinner theater



## WICHITA GRAND OPERA

- One of only 125 professional opera companies in the country, and one of only a handful in Kansas
- Delivers performance after performance of top-notch productions with international artists



Beatriz Mexi Molnar

## ROXY'S DOWNTOWN

Known for comedic, musical shows presented in a cabaret-style theater

## AMERICAN THEATRE GUILD

This Broadway in Wichita series includes *Legally Blonde*, *Anastasia* and *Dear Evan Hansen* running January–April

# PERFORMING ARTS

## MUSIC THEATRE WICHITA

- With an international reputation for excellence, MTWichita proudly produces all of its own sets, costumes and props
- Don't miss the live *Holiday Special*, December 9-11



Wichita Symphony Orchestra

## CROWN UPTOWN THEATRE

Renovated in 1928, this vaudeville venue offers dinner service, musicals, comedies and more

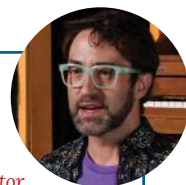
## WICHITA SYMPHONY ORCHESTRA

From classical concert weekends to pop concerts, be enveloped by the magnificent music for all ages

### Meet a Local

#### MONTY WHEELER

*Producing Artistic Director,  
Mosley Street Melodrama*



There are so many businesses here in Wichita like ours that are so unique and delightful. And the work that is put into these small local businesses is so filled with heart.

Scan for the full interview



Scan for a current listing of all performing arts schedules



MARTHA  
C.  
BUFORD

# SAFARI EXPRESS

ALL ABOARD FOR AN ELECTRIC JOURNEY!

SEDGWICK COUNTY **ZOO**

PLAN YOUR VISIT AT [SCZ.ORG](https://www.scz.org)



# Illuminations

## BOTANICA

WICHITA'S PREMIER LIGHT DISPLAY!

**November 18 - December 31**

**ALL TICKETS MUST BE PRE-PURCHASED ONLINE.  
NO TICKETS WILL BE SOLD AT THE DOOR.**



**OVER 2 MILLION LIGHTS!**

**VISIT [BOTANICA.ORG](http://BOTANICA.ORG) FOR DETAILS!**





- ### THINGS TO DO
- Botanica Wichita
  - Exploration Place
  - Keeper of the Plains Plaza
  - Mid-America All-Indian Museum
  - Old Cowtown Museum
  - Wichita Art Museum
  - Kansas Wildlife Exhibit

- ### THINGS TO DO
- Axe to Grind
  - Loony Bin
  - Orpheum Theatre
  - Roxy's Downtown
  - TempleLive Wichita
  - The Kansas African American Museum
  - Wichita-Sedgwick County Historical Museum
- ### PLACES TO EAT/DRINK
- Artichoke Sandwichbar
  - Botanic
  - Cafe Bel Ami
  - Dockum
  - Doo-Dah Diner
  - Espresso To Go Go
  - First Mile Cantina
  - Harvest Kitchen | Bar
  - Siena Tuscan Steakhouse
  - Sunflower Espresso
  - Sweet Allie B's/Limestone Beer Co.
- ### WHERE TO SHOP
- Grow Giesen Plant Shop
  - Nifty Nut House



## MUSEUMS ON THE RIVER DISTRICT

## DOWNTOWN WICHITA

## HISTORIC DELANO DISTRICT



- ### THINGS TO DO
- Blade & Timber
  - Boats & Bikes
  - Bohemia Healing Spa
  - Wichita Ice Center
  - Wichita Wind Surge
- ### PLACES TO EAT/DRINK
- Alzavino Wine Tavern
  - Delano Barbeque Company
  - Leslie Coffee Co.
  - Mokas Cafe
  - The Monarch
- ### WHERE TO SHOP
- Bungalow 26
  - Fartleks
  - Hatman Jack's
  - Vortex



**THINGS TO DO**

- CityArts
- Great Plains Transportation Museum
- Mosley Street Melodrama
- Museum of World Treasures
- WAVE
- Wichita Thunder

**WHERE TO SHOP**

- Cocoa Dolce
- Dead Center Village
- Lucinda's
- Mr. Diggs
- Old Town Farm and Art Market
- Urban Interiors
- Uniquities Home

**PLACES TO EAT/DRINK**

- B&C Barbeque
- District Taqueria
- Emerson Biggins
- Homegrown Wichita
- Jenny Dawn Cellars
- Larkspur
- Mort's Martini Bar
- Nortons Brewing Co.
- Old Mill Tasty Shop
- Paradise Donuts
- Playa Azul
- Public
- Pumphouse
- River City Brewing Co.
- Sabor
- Station 8 BBQ
- The Kitchen
- The PourHouse

# WICHITA'S CORE

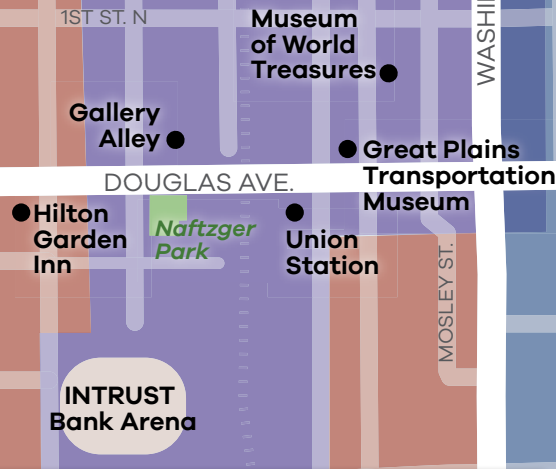
From eclectic shops and urban art to exciting nightlife and incredible local flair, the core's neighborhoods are the true heartbeat of Wichita



Crow Giesen Plant

**Courtyard by Marriott Wichita at Old Town**

**OLD TOWN**



**Hotel at Old Town**

**Museum of World Treasures**

**Gallery Alley**

**Great Plains Transportation Museum**

**Union Station**

**INTRUST Bank Arena**

**DOUGLAS DESIGN DISTRICT**

**THINGS TO DO**

- A.Jay Health & Wellness
- Crown Uptown Theatre
- Frank Lloyd Wright's Allen House Museum and Study Center

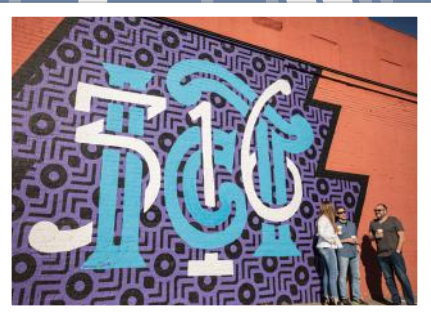
**PLACES TO EAT/DRINK**

- The Anchor
- Argentina's Empanadas
- Central Standard Brewing
- Dempsey's Burger Pub
- The Donut Whole
- The Hill Bar & Grill
- Hopping Gnome Brewing Company
- Lava & Tonic
- Lucky's Everyday
- Meddys Old Town
- Piatto Neapolitan Pizzeria
- Reverie Coffee Roasters
- Tanya's Soup Kitchen
- Vora European Restaurant
- White Crow Cider Company
- Wine Dive
- Ziggy's Pizza

**WHERE TO SHOP**

- Aida Stenholm
- Kernel's Popcorn Express
- The Spice Merchant & Co.
- The Workroom

**The Spice Merchant & Co.**



HYDRAULIC AVE.

Scan here for a list of all the Wichita breweries or coffee shops





*Ride the Q!*

**FREE, QUICK, EASY!**



Find your next  
ride on our app:  
**myStop Mobile**



[wichitatransit.org/QLine](http://wichitatransit.org/QLine)





# EXPLORATION PLACE

## KANSAS' PREMIER SCIENCE CENTER

Hundreds of dynamic, hands-on exhibits for all ages and the largest Digital Dome Theater in Kansas!

JAN. 21 - MAY 1



OPENS APRIL 8

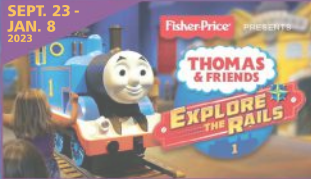


### HEALTH INSIDE OUT

MAY 27 - SEPT. 5



SEPT. 23 - JAN. 8 2023



[exploration.org](http://exploration.org)



# WICHITA ART MUSEUM



FREE ADMISSION ON SATURDAYS

Cafe | Store | Galleries Galore

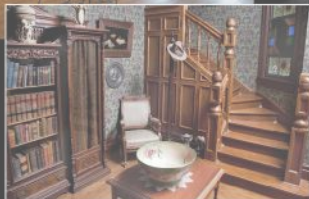


Discover Science and Art Today!

**\$3 OFF GENERAL ADMISSION**  
Offer good at Exploration Place and Wichita Art Museum  
Not valid for special events and cannot be combined with any other offer. No cash value. Expires 12/31/22.

Official Wichita Visitor's Guide 2022

# EXPLORE LOCAL HISTORY



## The Wichita-Segwick County Historical Museum

204 S. Main St. | [WichitaHistory.org](http://WichitaHistory.org) | 316-265-9314

Open: Tues. – Fri. 11 a.m. to 4 p.m., Sat. & Sun. 1 p.m. to 5 p.m. | Closed Mondays

## SWEET TREATS

### Cocoa Dolce Chocolates

Gelato, chocolate cocktails and chocolate and wine pairings

### Nifty Nut House

More than 4,000 items like nuts, fudge and classic candies



### ▲ Bakesale Treat Parlor

Featuring classic and unexpected cookies, cakes, bars and more

### Fartleks

Nutritious smoothies located in a running shop

### Bagatelle Bakery

Scratch bakery with pastries and breads



### ▲ Monica's Bundt Cake

Fresh made desserts and cakes

# UNIQUELY WICHITA FOOD EXPERIENCES

### Doo-Dah Diner

Voted a No. 1 restaurant favorite in Kansas and Missouri for its scratchmade gourmet comfort food

### HomeGrown Wichita

Locally-sourced food crafted with generosity and servant leadership

### Jimmie's Diner

Old-fashioned favorites where the waitresses wear poodle skirts

### Old Mill Tasty Shop

Home to one of the state's most complete soda fountains

### Prost

Authentic German food in contemporary urban biergarten

### Public

Bringing the area's finest ingredients to your table

### Stearman Field Bar & Grill

Enjoy a meal next to a landing strip and watch planes take off

### The Kitchen

Chef-run restaurant serving clean comfort food



DOO-DAH DINER



PROST

## COFFEE SHOPS

### SUNFLOWER ESPRESSO

Wichita's only café and coffee food truck

### FAIRMOUNT COFFEE CO.

Community coffeehouse just south of Wichita State University

### THE DONUT WHOLE

A fun coffeehouse, donut shop, art gallery and live music venue located in the Douglas Design District

#### Also try:

- Caffe Americana
- Churn & Burn
- Espresso To Go Go
- Il Primo Espresso Caffe
- Kookaburra Coffee
- Leslie Coffee Co.
- Mokas Cafe
- Paradise Donuts
- Reverie Coffee Roasters



THE DONUT WHOLE

# DINING

## UPSCALE

**Georges French Bistro**  
Experience modern French cuisine in the heart of College Hill

**Newport Grill**  
Specializes in fresh seafood, Kansas beef and steaks, cocktails and fine wines

**Chester's Chophouse & Wine Bar**  
Featuring the best in Midwestern beef and a wine bar centered on a 1,000-bottle cellar



NEWPORT GRILL



GEORGES FRENCH BISTRO



CHESTER'S CHOPHOUSE

### ALSO TRY:

- 6S Steakhouse
- Bella Vita Bistro
- Cafe Bel Ami
- Chester's Chophouse & Wine Bar
- Döma
- Larkspur Bistro and Bar
- Sabor Latin Bar & Grille
- Scotch & Sirloin
- Vora Restaurant European
- YaYa's Eurobistro

Pilsen Photo Co-op



### ALSO TRY:

- Bella Luna Café
- B&C Barbeque Pub & Grill
- Chicken N Pickle
- Dave & Buster's
- Deano's Grill and Tapworks
- Dempsey's Biscuit Co. at Crutch BBQ
- Dempsey's Burger Pub
- Emerson Biggins
- First Mile Kitchen
- Hog Wild Pit Bar-B-Q
- Hook & Reel
- Hurricane Sports Grill
- Jax Restaurant & Bar
- Piatto Neapolitan Pizzeria
- Tanya's Soup Kitchen
- The Monarch
- The Muse Cafe at Wichita Art Museum
- Ziggy's Pizza



PIATTO NEAPOLITAN PIZZERIA

Pilsen Photo Co-op

## CASUAL

### Argentina's Empanadas

Made-from-scratch, savory authentic empanadas

### Station 8 BBQ

Enjoy slow crafted BBQ and homemade sides in a historic 1920s firehouse

### Meddys

Fresh, made-to-order, authentic Mediterranean options that are both healthy and delicious



MEDDYS



**Wichita is a foodie city! Scan for a complete list of where to eat**

### NORTONS BREWING CO.

Downtown brewery known for its open-air patio and addictive appetizer, "Bacon Crack"



### CENTRAL STANDARD BREWING

Relaxed atmosphere, open patio and food trucks



### WICHITA BREWING CO. & PIZZERIA

Wood-fired pizza and beer concept, multiple locations



# BREW SCENE

### HOPPING GNOME BREWING CO.

Area's first taproom with a beer-focused atmosphere and "buy local" mission



### THIRD PLACE BREWING

Community-based gathering place with an outdoor patio



### RIVER CITY BREWING CO.

Wichita's first brewery, menu reflects Kansas' heritage with Kansas-raised beef



Photos by Gavin Peters, Ambassador Hotel



### POURHOUSE

Full menu and a dozen beers on tap, all brewed at Walnut River Brewing Co.



### LIMESTONE BEER CO.

Focused on German and Belgian-style beers; located in Sweet Allie B's

### Find a great beer at one of these popular dining spots:

- The Anchor
- Bricktown Brewery
- Deano's Grill & Tapworks
- The Monarch
- The Hill Bar & Grill
- Old Chicago
- Prost
- Public
- Pumphouse
- The Rusty Nail

PROST



# CHEERS!



## COCKTAILS

### **BOTANIC**

Find your happy place surrounded by plants and a relaxing vibe at Grow

### **LAVA & TONIC**

Wichita's first immersive tiki bar

### **DOCKUM**

A subterranean, upscale speakeasy

### **MORT'S MARTINI & CIGAR BAR**

All-seasons patio, offers over 160 martinis

### **VORSHAY'S COCKTAIL LOUNGE**

High-end, intimate cocktail lounge with velvet chairs and a moody atmosphere

## CIDER

### **WHITE CROW CIDER COMPANY**

Crafting modern hard cider in a variety of flavors and seasonal offerings

## BREW WAGON TOUR

- Wichita's only local brew bus tour
- Join in the excitement of craft brew in a fun, safe, educational, behind-the-scenes tour with samples

## WINERIES

### **GRACE HILL WINERY**

An authentic vineyard experience offering wine tasting tours

### **ALZAVINO WINE TAVERN**

A modern wine bar with self-serve machines dispensing 1oz, 3oz, or 6oz pours

### **JENNY DAWN CELLARS**

An urban winery with quality, handcrafted wine as well as wine education classes

INSPIRIT KOMBUCHA BREWING CO.



## KOMBUCHA

### **INSPIRIT KOMBUCHA BREWING CO.**

A kombrewery with handcrafted, probiotic kombucha teas

### **APOLLO FERMENTATIONS**

Brews kombucha with local, organic ingredients to provide the best quality and support to the community

## JENNY DAWN CELLARS





BRICKYARD



OLD TOWN

Photos by Pilsen Photo Co-Op, Brickyard, Fernando Salazar, Downtown Wichita, The Cotillion, Mark Weiss

# OLD TOWN

- The pulse of downtown, a district sought out for its restaurants, shops, clubs, theaters, galleries and museums
- Brick-lined streets, native limestone and historic lamp posts
- Converted brick warehouses hold more than 100 hip businesses and happening nightlife, including:
  - **River City Brewing Co.**
  - **Emerson Biggins**
  - **Meddys**
  - **Mort's Martini & Cigar Bar**
  - **Old Chicago**
  - **Pumphouse**



## JUST DANCE

### XY Bar

- Wichita's largest LGBTQ+ dance club located in Old Town

### Brickyard

- Dance out under the stars at this outdoor live music venue in the heart of Old Town
- Adjacent to Public, a farm-to-table eatery

# NIGHTLIFE



## PERFORMANCES & LIVE MUSIC

Wichita offers several live music venues that host local favorites and regional acts

- WAVE
- Orpheum Theatre
- The Loony Bin
- Hartman Arena
- INTRUST Bank Arena
- The Cotillion



## LOCAL GEMS

### THE ANCHOR

Known for its homestyle gastropub menu and ample and ever-changing selection of 59 craft beers on tap

### ARTICHOKE SANDWICHBAR

This Irish dive is a Wichita icon and the place to go for great live music, delicious sandwiches and a cold Guinness

### RAIN BISTRO & LOUNGE

Serving a diverse clientele with a Sunday drag brunch buffet

### KIRBY'S BEER STORE

Share a drink, enjoy live music and play pinball with friends or family

### LUCKY'S EVERYDAY

A favorite dive bar with a cozy, dark, cool vibe and a heated patio

### HEADSHOTS BAR & GRILL

Kansas' first video game cocktail bar serving pub food while offering over 1,000 video games



Get to know the heart behind Artichoke Sandwichbar's passion for live music

# UNIQUE SPECIALTY SHOPS

- Browse the unexpected, eclectic goods at **Bungalow 26**
- Find repurposed and whimsical treasures at **Generations Antiques & Artisans** or **Paramount Antique Mall**
- Write a handwritten letter at the Confetti Bar and Card Station at **The Loud Cicada** or shop for prints, postcards, stickers, pens, jewelry and more
- **Lucinda's** has cheeky, off-the-wall gifts, clothing, shoes and jewelry
- **Twister City Harley-Davidson** offers a huge selection of Harley products
- Pick up artwork, lighting and home decor at **Uniquities Home** or **Urban Interiors**
- Create the perfect custom hat at **Hatman Jack's**
- **The Workroom** is the place for local art and artisan accessories

- **Dead Center Vintage** is vintage shop in the center of downtown
- Experience Wichita's boutique plant shop, **GROW Giesen Plant Shop** where you can build your own terrarium at the DIY Plant Bar, shop for unique plants, pots and locally made plant art or have a botanical martini at **Botanic**



GROW GIESEN PLANT SHOP



THE WORKROOM



HATMAN JACK'S

**Aida Stenholm** specializes in individually handcrafted and made-to-order bags, accessories and custom shoes



AIDA STENHOLM



BOHEMIA HEALING SPA

## PAMPER YOURSELF

- A. Jay Health & Wellness
- Bohemia Healing Spa
- The Health Connection
- Healing Waters

## SHOP LOCAL

**Old Town Farm & Art Market** brings local vendors together on Saturdays April-December in **Old Town Square**



# SHOPPING



## BRADLEY FAIR

- Some of the city's most popular outdoor shopping comprised of trendy boutiques, a top-of-the-line spa, exclusive dining and fashion favorite stores
- During the holiday season, enjoy horse-drawn carriage rides



THE SPICE MERCHANT

## TASTYSHOPS

- See why Food Network's Alton Brown called **Nifty Nut House** a "National Treasure"  
Wichita's original gourmet coffee roaster, **The Spice Merchant & Co.** offers fresh coffee beans, teas and spices
- **Monica's Bundt Cake** creates beautiful, made-from-scratch desserts



MONICA'S BUNDT CAKE

- **Bakesale Treat Parlor** is a premium dessert and bakery featuring classic favorites and unexpected treats
- **Local Roasters** roasts coffee in small batches; bagged by hand
- Get your handcrafted, gourmet popcorn from **The Popcorner** or **Kernel's Popcorn Express**

## FLAG SWAG

Don't leave Wichita without flag swag or an iconic Keeper statue. Find ICT swag here:



- Bungalow 26
- Generations Antiques & Artisans
- Lucinda's
- The Health Connection
- The Workroom
- Urban Interiors
- Wichita Screen Printing

## SHOPPING DISTRICTS

- Bradley Fair
- Revolutsia
- Old Town Square
- NewMarket Square
- Douglas Design District
- Greenwich Place
- Towne East Square
- Delano District



Scan for a map of Wichita shops

# DOWNTOWN HOTELS

## AMBASSADOR HOTEL AUTOGRAPH COLLECTION

The state's only AAA Four Diamond property and home to Dockum, a speakeasy-style bar



## COURTYARD WICHITA AT OLD TOWN

Just steps from some of the finest restaurants, entertainment, theaters and museums

## FAIRFIELD INN & SUITES BY MARRIOTT WICHITA DOWNTOWN

Within walking distance of INTRUST Bank Arena and convention center



## HOTEL AT OLD TOWN

This historic brick warehouse near Old Town attractions now boasts lavishly decorated suites, a beautiful atrium lobby and a classic piano bar

## HILTON GARDEN INN DOWNTOWN WICHITA

One of downtown's newest hotels within easy walking access to Old Town entertainment district

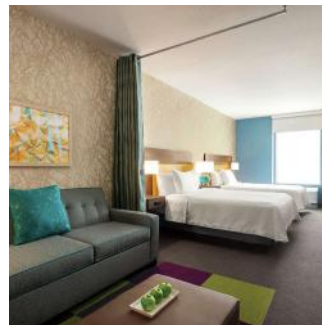


## DRURY PLAZA HOTEL BROADVIEW

This remodeled historic Wichita landmark offers stunning views overlooking the Arkansas River

## HYATT REGENCY WICHITA

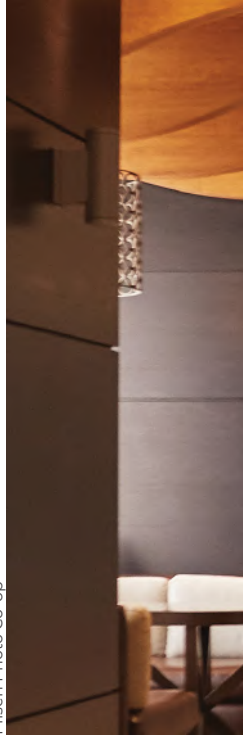
The city's largest hotel is surrounded by fountains and walking paths along the Arkansas River



## HOME2 SUITES BY HILTON WICHITA DOWNTOWN DELANO

Downtown's newest hotel with a firepit and sitting area with barbecue grills

Pilsen Photo Co-op



## HOTEL DINING

**AVI Seabar & Chophouse**  
Drury Plaza Hotel  
Broadview

**Chisholm's American Beef and Ale House**  
DoubleTree by Hilton  
Wichita Airport

**Fireside Grille and The Greatroom**  
Wichita Marriott Hotel

**Harvest Kitchen | Bar**  
Hyatt Regency Wichita

**401 Pub in Blue**  
Hilton Garden Inn  
Wichita Downtown

**The Green Mill Restaurant & Bar**  
Holiday Inn  
Wichita East I-35

**Siena Tuscan Steakhouse**  
Ambassador  
Hotel Autograph  
Collection



WICHITA MARRIOTT HOTEL

# HOTELS



## WICHITA MARRIOTT HOTEL

Delight in luxury in a newly redesigned room and explore great shopping within five miles

## TRU BY HILTON WICHITA

A contemporary, colorful hotel embracing simplicity and efficient rooms



HILTON GARDEN INN BRADLEY FAIR



ALOFT WICHITA NORTHEAST



TRU BY HILTON WICHITA

# STAY *in* STYLE

Wichita has more than 8,100 hotel and motel rooms for every type of traveler

## ALOFT WICHITA NORTHEAST

One of Wichita's modernly hip hotels, offering local art, live music and pet-friendly accommodations

## HOMEWOOD SUITES BY HILTON AT THE WATERFRONT

Enjoy lakeside views and family-friendly amenities at this all-suite hotel

## HILTON GARDEN INN BRADLEY FAIR

Beautiful lakeside setting within walking distance of upscale dining and shopping

## HOLIDAY INN WICHITA EAST I-35

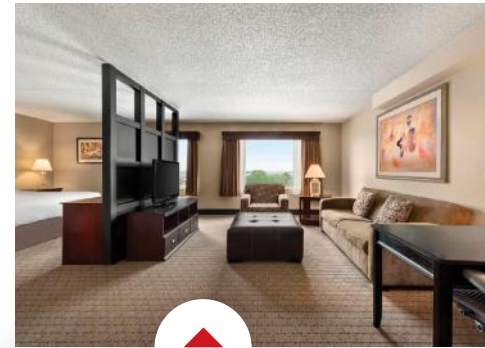
Completely renovated, this full-service hotel is an excellent choice in east Wichita

## HOME2 SUITES BY HILTON WICHITA NORTHEAST

All-suite hotel within five miles of Wichita State University, Wichita Sports Forum and Greenwich Place

## HYATT PLACE AT WICHITA STATE UNIVERSITY

New hotel at Innovation Campus within walking distance to Braeburn Square



## DOUBLETREE BY HILTON WICHITA AIRPORT

Near Wichita Dwight D. Eisenhower National Airport (ICT) with premier amenities in modern, relaxed settings



Scan for a full list of hotels



ZOOBILLEE



ICT BLOKTOBERFEST



WICHITA CITY PRIDE



OPEN STREETS ICT



# BEST ANNUAL FESTS



Photos by Fernando Salazar, Wichita Festivals, Gavin Peters, Drone-tography LLC, Brett Schauf, Visual Fusion Photographics, Travis Scanlan, Paula Moore, Rick McPherson

## ILLUMINATIONS

Stroll through an enchanted Christmas forest, where more than 2 million lights are strung atop trees in more than 30 themed gardens at **Botanica Wichita**. Illuminations is Wichita's premier Christmas light display.





CARS FOR CHARITIES



WICHITA TACO FEST



GREAT PLAINS RENAISSANCE FESTIVAL



WICHITA ASIAN FESTIVAL



M. Robinson  
Michael Holmes  
Prairie Village, KS  
2-Dimensional Mixed Media  
B10

### AUTUMN & ART

The juried art exhibit and sale welcoming 100+ artists takes place around a serene lake and features art demonstrations, live music and hands-on activities for children



### TALLGRASS FILM FESTIVAL

The largest independent film festival in Kansas showcases the best films from around the globe



#### Meet a Local

LILY WU  
Anchor/Reporter,  
KWCH 12

The **Wichita Asian Festival** is one of my favorite annual events that showcases the diversity in our community, through culinary and performing arts from the continent of Asia.



These are some of the great events that happen every year. **For current dates, times and locations scan here**



#### Ongoing Events

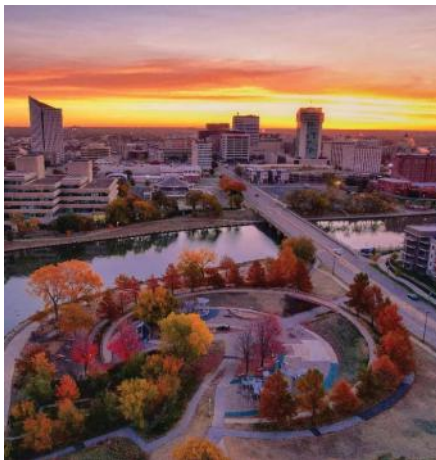
Wichita is the place to be for ongoing events like First Friday Art Crawl, Farm and Art Markets, 2nd Saturday, live music and more

# BEST OF INSTAGRAM

Cure your fear of missing out by following these Instagrammers for the best Wichita photo opps and experiences. Join in by following us @visitwichita or share your favorite views with #visitwichita.



Follow [@ictbrokegirls](#)  
Location: Bungalow 26  
📷 [@ictbrokegirls](#)



Follow [@drone\\_tography316](#)  
Location: Riverfront skyline  
📷 [@drone\\_tography316](#)



Follow [@onedelightfullife](#)  
Location: Grace Hill Winery  
📷 [@onedelightfullife](#)



Follow [@wichtabyeb](#)  
Location: Dōma  
📷 [@wichtabyeb](#)



Follow [@wichitaflag](#)  
Location: Clifton Square  
📷 [@lelablue knits](#)



Follow [@wichitamoms](#)  
Location: Bradley Fair  
📷 [@bradleyfairwichita](#)



Follow [@wichtalifeict](#)  
Location: Keeper of the Plains  
📷 [@stevenp316](#)



Follow [@fertthefoodie](#)  
Location: Station 8 BBQ  
📷 [@fertthefoodie](#)



Follow [@visitwichita](#)  
Location: Public  
📷 [@publiccoldtown](#)

# A TASTE OF COLLEGE HILL

Locally Owned ♦ Uniquely Wichita



## HAPPY HOUR

3 p.m.-6 p.m. Mon.-Fri.

### \$5 Specials

Sangria • Cosmo

Prosecco

Hummus • Bruschetta



♦ 4714 E. DOUGLAS AVE. ♦ 316-613-2772



## HAPPY HOUR

3 p.m.-6 p.m. Mon.-Fri.

**Wines** - \$5 Select European Pours

**Cocktails** - \$5 French 75 • Monopolowa • Daiquiri

**Eats** - \$5 calamari, meatballs  
\$6 Roman Artichokes • \$7 mussels & frites

**Beer** - \$3 peroni pints • \$4 local Euro beers

VORAWICHITA.COM ♦ 3252 E. DOUGLAS AVE. ♦ 316-997-9277



**\$5 BURGERS  
MONDAYS  
ALL DAY**



HILLWICHITA.COM ♦ 4800 E. DOUGLAS AVE. ♦ 316-201-1190

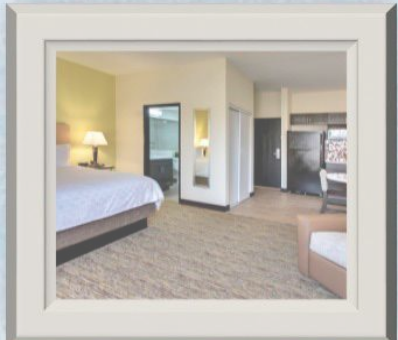


TempleLive is a historic concert venue located in downtown Wichita, KS  
**FOLLOW US ONLINE** @TEMPLELIVEWICHITA     
**332 E 1ST STREET, WICHITA, KS 67202** | [WWW.TEMPLELIVE.COM](http://WWW.TEMPLELIVE.COM)



Conveniently located near multiple shopping districts, an abundance of restaurants, and downtown. Our spacious rooms are equipped with full-sized kitchenettes, recliner, and working desk. All the luxuries to make your stay feel like home.

**Come experience  
True Hospitality!**



We provide guests with complimentary high-speed Wi-Fi, 24 hour fitness center, guest laundry, game room with pool table, and grilling gazebo for out door relaxation. Additionally, we offer select rooms for guests' furry companions for a nominal fee.



**CANDLEWOOD  
SUITES**  
AN IHG® HOTEL



**(316) 685-2233**  
 5211 E. Kellogg, Wichita, KS 67218  
[www.candlewoodsuites.com/wichitaks/](http://www.candlewoodsuites.com/wichitaks/)  
 A Mid Continent Hospitality Property





Discover a room that revolves around you at the Wichita Marriott Hotel. Enjoy true comfort mixed with dynamic, thoughtful design that offers the perfect blend of style and substance.

### OUR DESIGN INSPIRATION: YOU

9100 Corporate Hills Drive  
Wichita, KS 67207  
316-651-0333 [www.marriott.com/ictwe](http://www.marriott.com/ictwe)

 WICHITA MARRIOTT  
 @WICHITAMARRIOTT

Operated by Corporate Hills LLC under license from Marriott International, Inc. or one of its affiliates.



*Derby*  
KANSAS

DERBY  
PROUD

*Rock River Rapids*

*Warren Riverview Park*

*Field Station: Dinosaurs*

# Make Memories IN DERBY

Kayak on the Arkansas River, play with dinosaurs and make waves at Rock River Rapids Aquatic Park.

[DerbyKS.com/Explore](http://DerbyKS.com/Explore)



TANGANYIKA  
*Wildlife Park*

## EXPERIENCE OUR ULTIMATE WEEKEND

-  *Packed with Value*  
Packed with incredible animal experiences, interactive animal encounters, and other exclusives, the value is undeniable. Save over \$3,000 on experiences and travel costs.
-  *Designed with Convenience*  
No need to travel across the United States and beyond to experience the most rare and unique animal experiences. We have it all here wrapped into one premium package in the heart of the country near Wichita, Kansas.
-  *An Unforgettable Opportunity*  
Have your camera ready to capture some unbelievable moments to cherish and share! We're ready for you. Plan your visit today!



# STRATAGA

KANSAS UNDERGROUND SALT MUSEUM



ADVENTURE  
*awaits*

*Hutchinson, KS*



3650 E. Ave. G, Hutchinson, KS 67501



620.662.1425



[www.underkansas.org](http://www.underkansas.org)

FIND THE ANSWERS YOU'RE LOOKING FOR WITH VISIT WICHITA'S

# INTERACTIVE MAPS

Search **Northwest**, **Northeast**, **Southwest**, **Southeast** or **Wichita's Core** maps for restaurants, things to do, hotels and shopping!



Where can I go  
for craft beer?

Can I get ice cream near me?

How close am I to  
the Keeper of the  
Plains Plaza?

What's near my hotel?

Where can I find  
local shops?





515 S. Main, Suite 115  
Wichita, KS 67202  
316-265-2800  
[VisitWichita.com](http://VisitWichita.com)