



# Student Tours in Grapevine

Grapevine, Texas is the perfect location for student groups looking to experience the Dallas/Fort Worth area. Not only does Grapevine offer a central location making it easy to take in all the Dallas/Fort Worth area has to offer, we also offer fun, educational attractions and performance opportunities.

## Grapevine's Educational Attractions

### **MEOW WOLF - THE REAL UNREAL**

Let imaginations and creative senses run wild with this innovative and immersive art experience.

### **SEA LIFE GRAPEVINE AQUARIUM**

Schedule a tour from an Aquarist and learn all about the sharks, stingrays, sea turtles and more on site here. Special note - Grapevine is the only Sea Turtle Rescue Center in Texas. Learn how we nurse sea turtles back to health with the goal of releasing them back into the Gulf Coast.

### **GRAPEVINE VINTAGE RAILROAD**

Meet with an actual Railroad engineer, then experience a true railroad excursion that includes a visit to the Historic Stockyards and a live Cattle Drive.

### **NASH FARM**

Learn about early farm life on the Grape Vine Prairie through educational programs at this historic farmstead.

### **GRAPEVINE OBSERVATION TOWER**

Take in an amazing view of the surrounding Grapevine area, including the skylines of both Dallas and Fort Worth, from 150-feet above Grapevine.

### **SETTLEMENT TO CITY MUSEUM**

Experience Grapevine's history, including how we developed from a farming town to the thriving destination we are today. Tour includes a historic school house, Cotton Gin and even a 19th-century printing press.



## Fun-Filled Dining Options

### CORKY'S GAMING BISTRO

Great food along with fun activities including escape rooms, axe throwing, crazy darts, and an arcade.

### MAIN EVENT ENTERTAINMENT

Great food along with fun activities including bowling, laser tag, billiards and an arcade

### NASH FARM

Plan a boxed lunch or catered meal on site at Nash Farm. The pole barn is the perfect venue for a relaxing lunch break.

### GRAPEVINE VINTAGE RAILROAD

Plan a boxed lunch aboard the Grapevine Vintage Railroad, en route to the Historic Stockyards.

### ROUND 1 ENTERTAINMENT

Experience wall-to-wall entertainment with bowling, arcade games, karaoke, billiards and delicious food.

### HARVEST HALL

Pre-purchase meal cards and let students select from ten culinary kitchens inside this food hall designed to look like a 19th century train station.



## Performance Groups

Grapevine is always looking for young talent to help provide additional entertainment along our Historic Main Street District.

### PEACE PLAZA

This outdoor plaza outside of Grapevine Main Station/ Harvest Hall, is perfect for small to large performance groups and offers a built-in audience with a popular food hall on site.

### TOWN SQUARE GAZEBO

This natural gathering place in the Historic Main Street District is perfect for small groups. This is also home to our Grapevine Farmers & Artisans Market most Saturdays.

### PALACE THEATRE

Perfect for larger groups or competitions, the Palace Theatre has a stage, 400+ seats and great acoustics.



## Grapevine Festivals & Events

Grapevine is known for its top-notch festivals and events. With events taking place throughout the year, you never know what opportunities might be available to perform in front of a large, festival crowd.

## Student-Friendly Hotels

All Grapevine hotels have interior corridors and are considered student friendly. The below hotels are unique as they offer on-site waterparks and student-friendly attractions/activities:

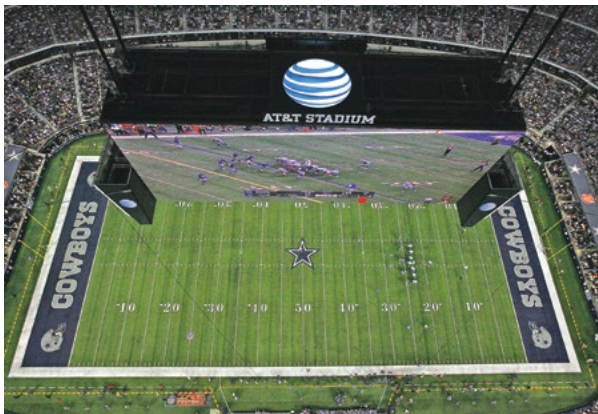
**Great Wolf Lodge**  
[GreatWolf.com/Grapevine](http://GreatWolf.com/Grapevine)

**Gaylord Texan Resort**  
[GaylordTexan.com](http://GaylordTexan.com)



## Nearby Student-Friendly Attractions

- Six Flags over Texas
- AT&T Stadium (*Home of the Dallas Cowboys*)
- Globe Life Field (*Home of the Texas Rangers*)
- Perot Museum of Nature & Science
- Historic Stockyards
- Bureau of Engraving and Printing

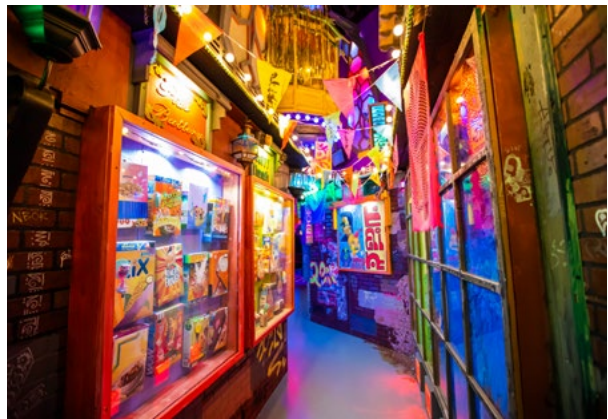




## Grapevine Sample Itinerary Options

### OPTION 1 - SATURDAY OR SUNDAY

- 9:30 a.m. Visit Settlement to City Museum
- 10:30 a.m. Grapevine Observation Tower Tour
- 11:15 p.m. Lunch at Harvest Hall
- 12:30 p.m. Board Grapevine Vintage Railroad
- 2 p.m. Explore the Historic Stockyards
- 4 p.m. View the live Cattle Drive
- 7 p.m. Grapevine Vintage Railroad returns to Grapevine
- 7:30 p.m. Dinner and entertainment at Corky's Gaming Bistro



### OPTION 2 - AVAILABLE DAILY

- 10 a.m. Visit Historic Nash Farm
- 11:45 a.m. Enjoy SEA LIFE Grapevine Aquarium
- 1 p.m. Lunch at Grapevine Mills food court or Round1 Entertainment
- 2:45 p.m. Meow Wolf — The Real Unreal
- 4:45 p.m. Grapevine Observation Tower Tour
- 6 p.m. Dinner and entertainment at Main Event



### Contact Tara Hippensteel

*Leisure & International Sales Manager*  
Grapevine Convention & Visitors Bureau  
THippensteel@GrapevineTexasUSA.com  
817.410.3545

