



Briefing on FY 2026 First Quarter Ridership and Route Performance Update

Committee-of-the-Whole
Development & Innovation Subcommittee

March 10, 2026

Ralph Parker
Director Research & Service Analysis

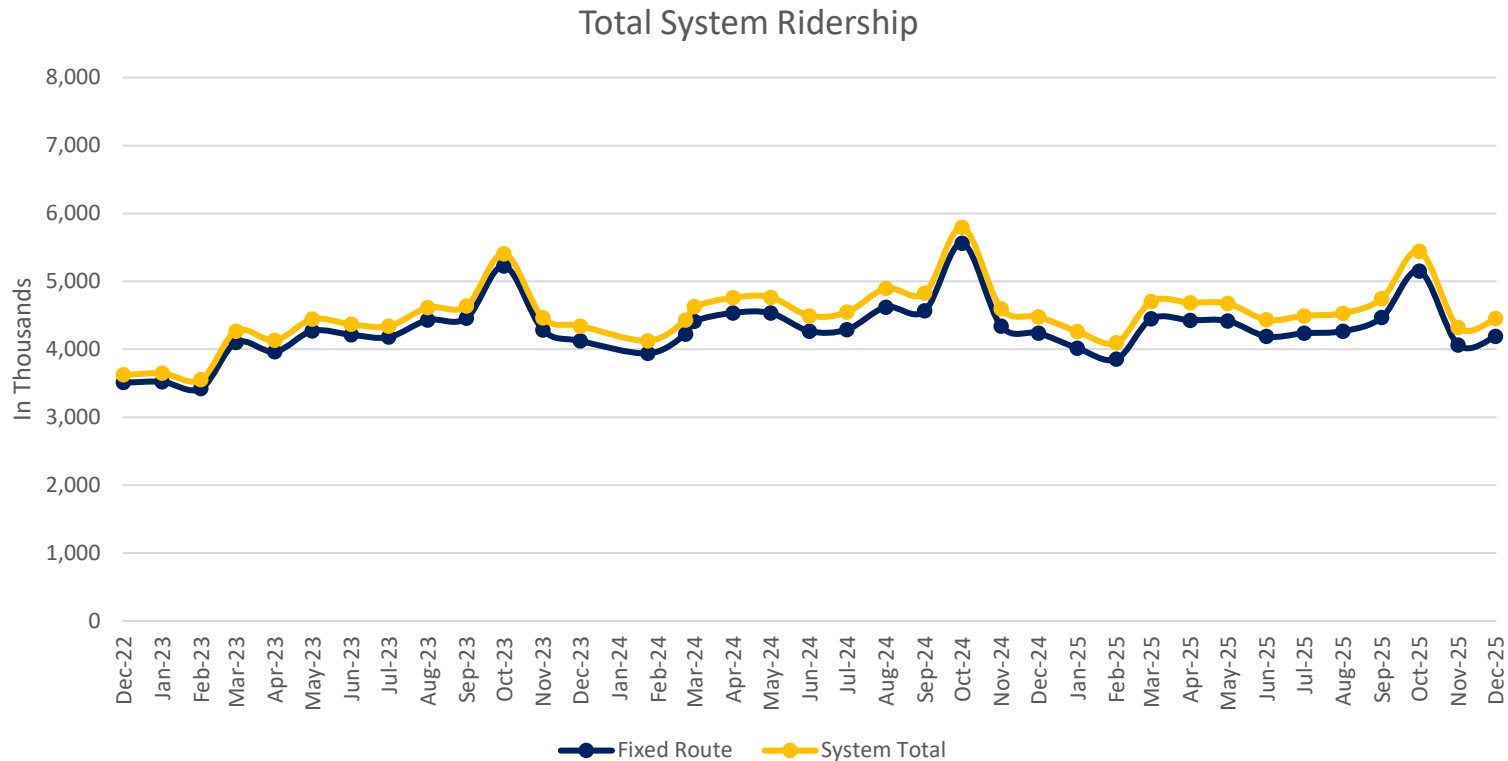


Notes about Q1 Report

- This report will look at FY26 Q1 data, covering October 2025-December 2025
- Silver Line ridership is combined with TRE under Commuter Rail
- Factors that could impact Q1 service
 - First 18 days of October include State Fair of Texas
 - Weather was a factor for Q1 with a little over 10 inches of rain compared to 1.8 inches in FY25
 - September 2025 service changes also an impact



System Ridership



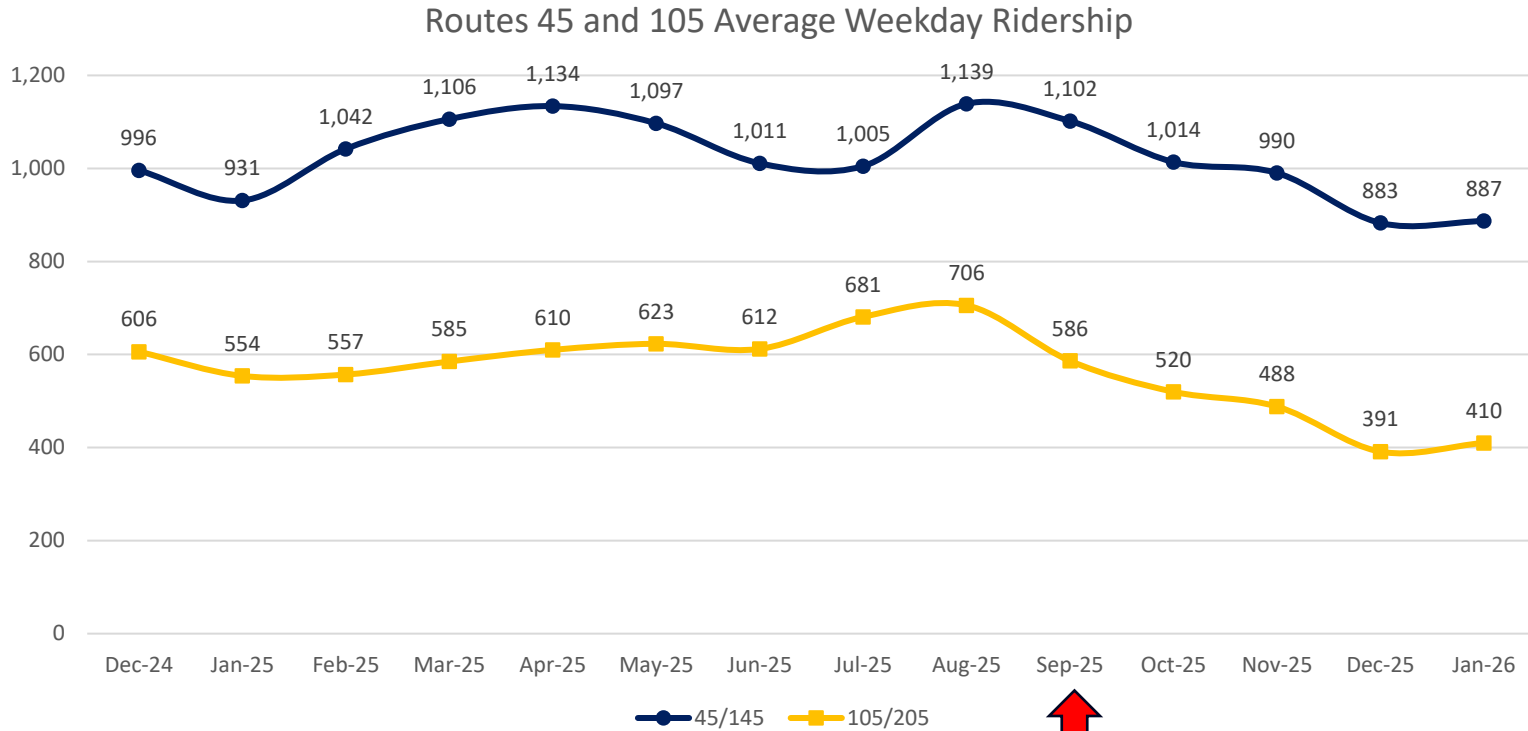
- Total system ridership (fixed plus Microtransit and Paratransit) 14.2 million
- Fixed route ridership (Bus, Light Rail, Commuter Rail, Streetcar) 13.4million
- Annual system decrease from FY26 Q1 to FY25 Q1 **-4.4%**



September 15 Service Changes

Route	Change
45 -> 145 Marsalis	Frequency Reduction from 15/20 to 15/30
105 -> 205 Henderson	Frequency Reduction from 15/30 to 30/40
235 Hebron/239 NW Plano	Moved from Quorum Rd to Addison Rd
402 Northpark Shuttle	Route Eliminated
Lakewood GoLink	Zone Eliminated
Park Cities GoLink	Expanded to add a stop at Love Field Airport
Rowlett GoLink	Expanded to add a stop at Firewheel Town Center
Keller Spring GoLink	Expanded to serve Valwood Industrial Park in Farmers Branch and New Koreatown in Carrollton

Route 45 and 105 Ridership

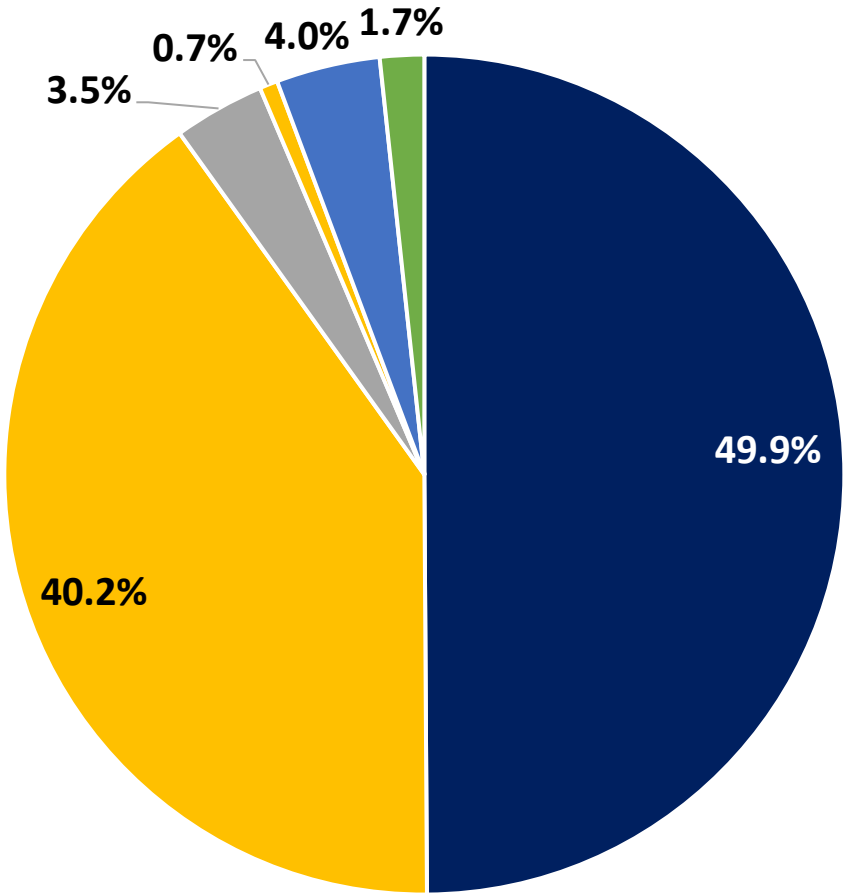


Route 45/145 ridership down **-11.4%**

Route 105/205 ridership down **-35.4%**

Ridership by Mode

FY26 Q1



■ Bus ■ LRT ■ Commuter Rail ■ Streetcar ■ Microtransit ■ Paratransit

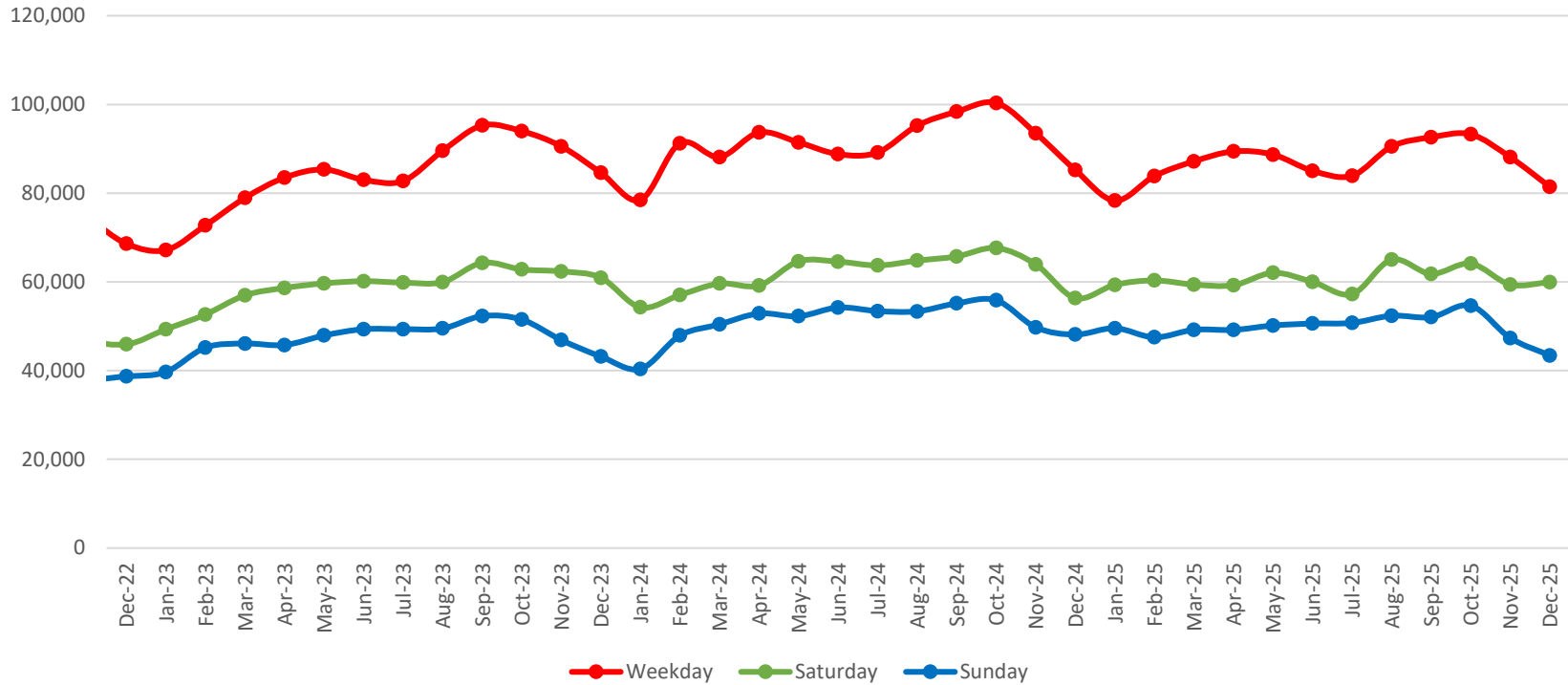
Ridership by City

Ridership by Mode							
City	Bus	LRT	Commuter	Streetcar	Microtransit	Paratransit	DART City Total
Addison	205,789	0	16,020	0	3,259	387	225,455
Carrollton	78,117	181,390	16,934	0	20,239	6,059	302,739
Cockrell Hill	65,872	0	0	0	0	33	65,905
Dallas	5,391,485	4,600,260	165,855	99,755	210,441	150,618	10,618,414
Farmers Branch	54,769	47,635	0	0	10,323	3,692	116,419
Garland	543,513	105,267	0	0	24,123	18,432	691,335
Glenn Heights	11,340	0	0	0	3,792	1,134	16,266
Highland Park	3,412	0	0	0	901	106	4,419
Irving	312,502	240,566	48,458	0	125,708	12,173	739,406
Plano	198,098	246,311	24,914	0	99,166	19,671	588,161
Richardson	220,098	202,429	29,153	0	7,639	6,481	465,799
Rowlett	0	86,848	0	0	58,322	3,439	148,609
University Park	10,241	0	0	0	1,965	230	12,436
DART Cities Total	7,095,235	5,710,705	301,334	99,755	565,878	222,455	13,995,363



Bus Average Daily Ridership

Bus System Average Daily Ridership



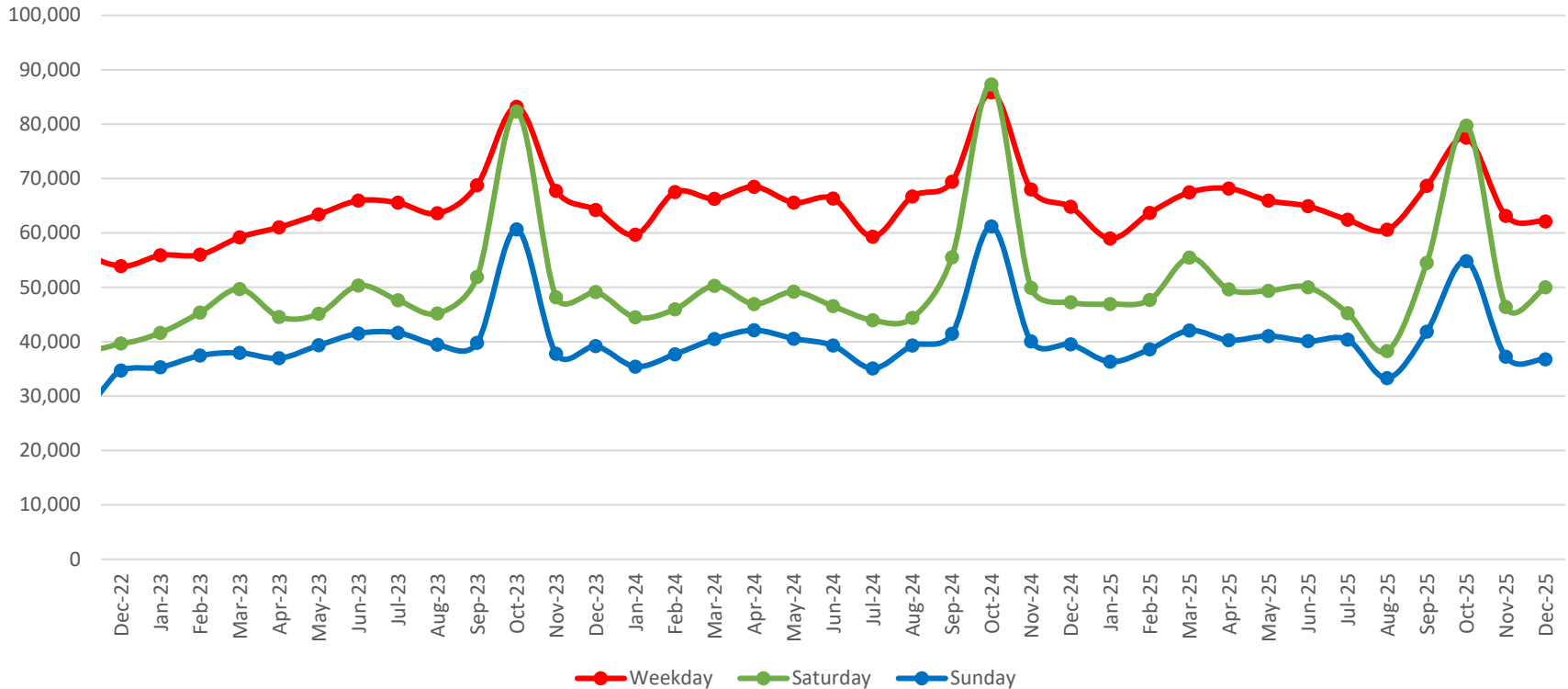
FY26 Q1

- Bus ridership 7.1 million
- Avg Weekday 87.6K **(-5.8%)**
- Avg Saturday 61.2K **(-2.4%)**
- Avg Sunday 48.5K **(-5.4%)**



Light Rail Average Daily Ridership

Light Rail Average Daily Ridership



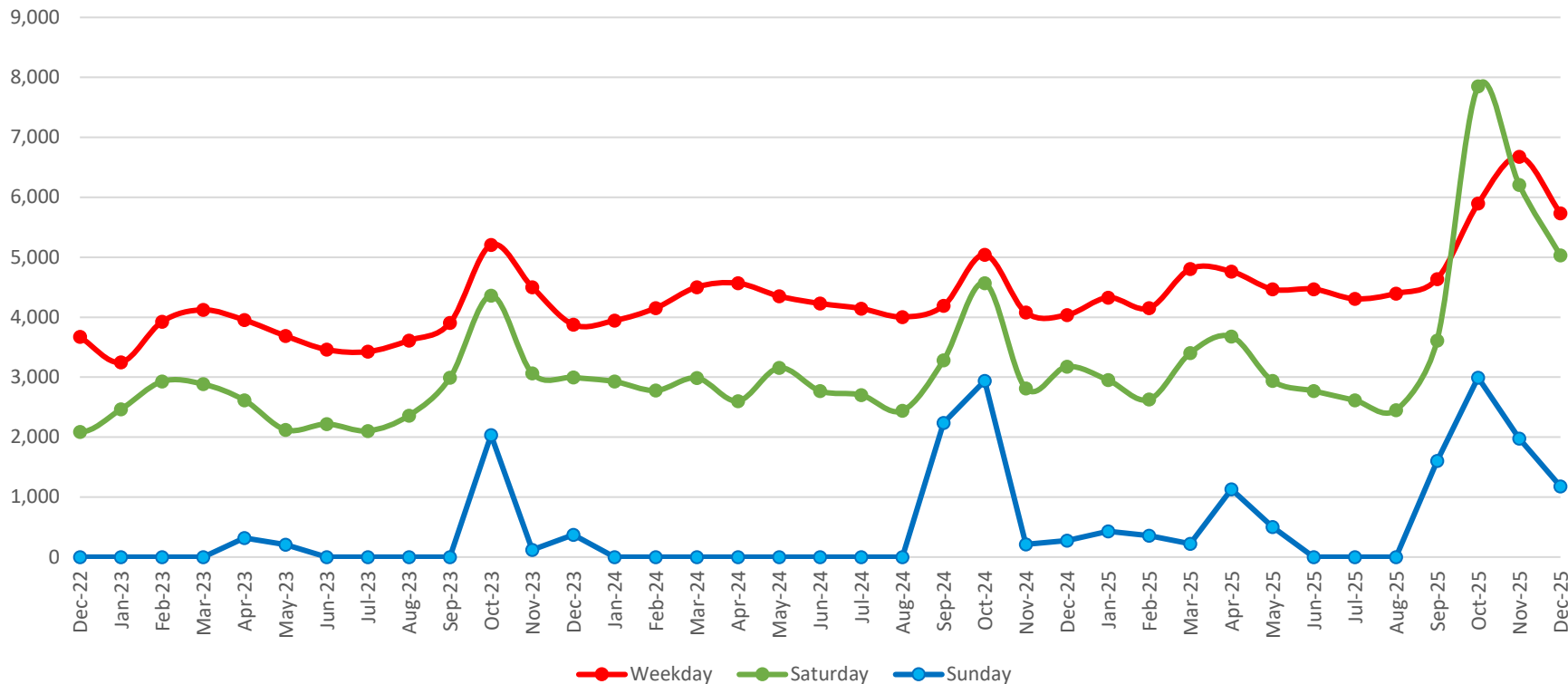
FY26 Q1

- LRT ridership 5.7 million
- Avg Weekday 67.6K **(-7.2%)**
- Avg Saturday 58.7K **(-4.5%)**
- Avg Sunday 42.9K **(-8.5%)**
- State Fair attendance was down 15.3%
- TX/OU attendance was down 8.6%



Commuter Rail Average Daily Ridership

Commuter Rail Average Daily Ridership



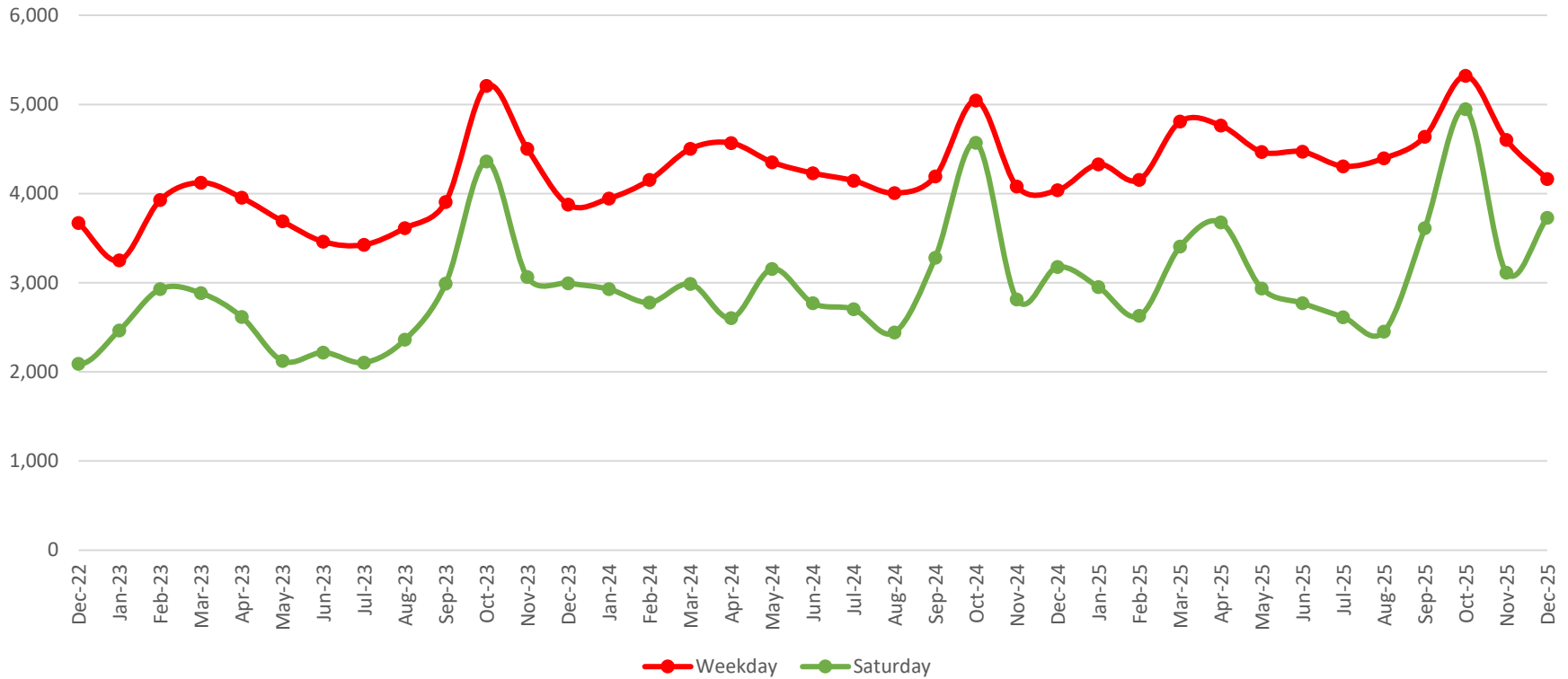
FY26 Q1

- Commuter ridership 500.5K
- Avg Weekday 6.1K
- Avg Saturday 6.2K
- Avg Sunday 2.1K



TRE Ridership

TRE Average Daily Ridership



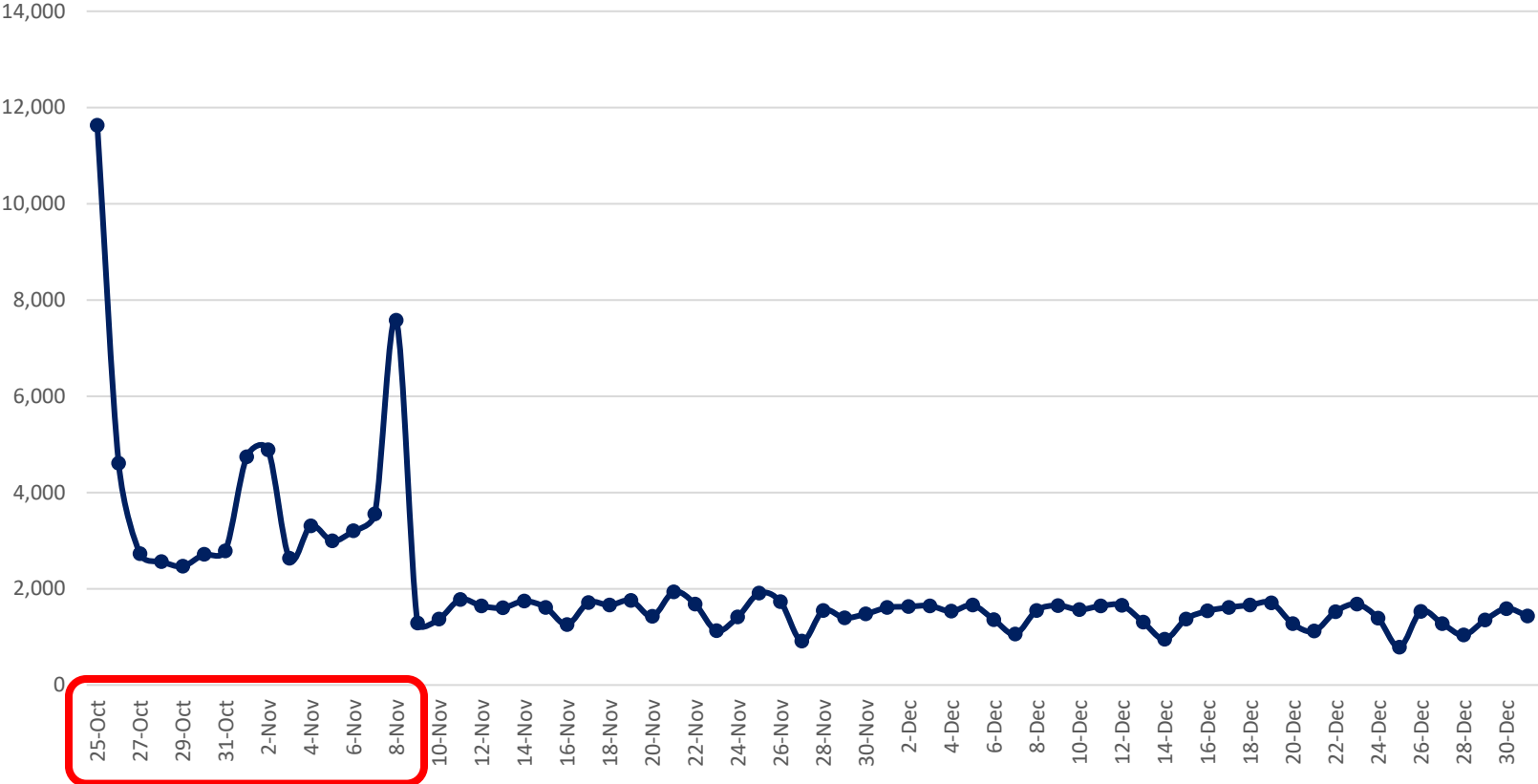
FY26 Q1

- TRE ridership 359.4K
- Avg Weekday 4.7K (6.8%)
- Avg Saturday 3.7K (6.6%)



Silver Line Ridership

Silver Line Daily Ridership



FY26 Q1

- Silver Line ridership 141.0K
- Avg Weekday 2.1K
- Avg Saturday 5.3K
- Avg Sunday 2.5K



Q1 Comparison

Mode	FY22	FY23	FY24	FY25	FY26
Bus	5.6M	6.0M	7.2M	7.5M	7.1M
Light Rail	4.6M	5.1M	6.0M	6.1M	5.7M
Commuter Rail	300.0K	325.7K	342.8K	336.0K	500.5K
Streetcar	237.6K	138.5K	126.1K	140.2K	99.8K
Microtransit	35.0K	138.9K	315.1K	498.7K	570.9K
Paratransit	171.8K	203.4K	226.9K	233.5K	241.8K
System	10.9M	11.9M	14.2M	14.9M	14.2M

Service Performance

- Performance for each DART bus route is assessed over three measures:
 1. Riders per revenue hour
 - *Unlinked passenger trips divided by vehicle revenue hours*
 2. Passenger miles per revenue mile
 - *Passenger miles traveled divided by vehicle revenue miles*
 3. Subsidy per rider
- Performance for each GoLink zone is assessed over two measures:
 1. Riders per revenue hour
 2. Subsidy per rider



FY26 Q1 Bus Performance by Route Type

Route Type	Riders/ Hour	Passenger Miles/ Revenue Miles	Subsidy/ Rider
Frequent	15.80	4.84	\$9.44
Local	11.94	3.62	\$12.74
Local Coverage	10.99	4.06	\$14.90
Express	9.32	6.55	\$29.51
Microtransit	4.85	Does Not Apply	\$14.91
Shuttle	24.92	Does Not Apply	\$1.37
OVERALL	11.88	4.42	\$11.81

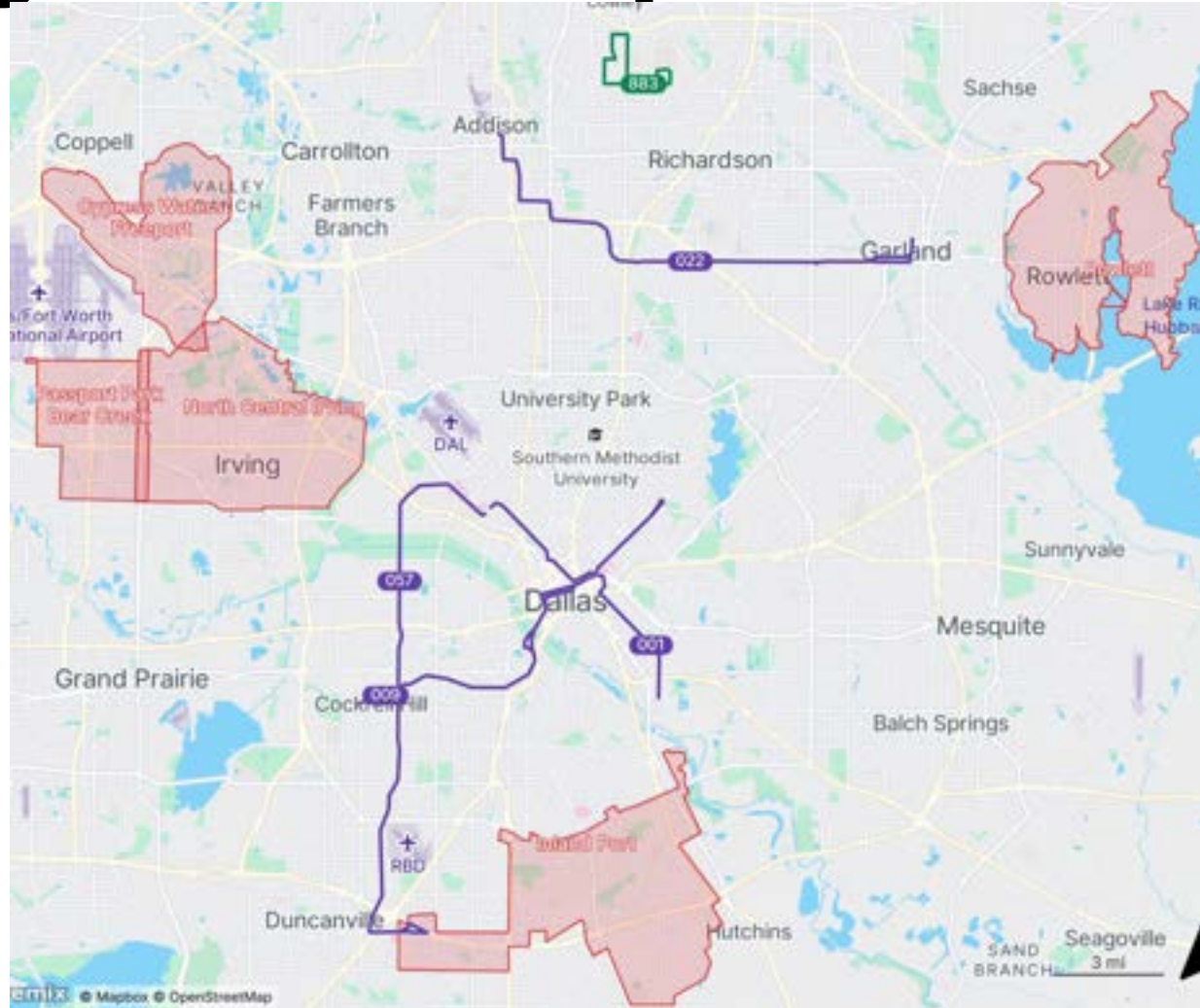
FY26 Q1 Highest Ridership

Top 5 bus route average weekday ridership

- 883 UTD Shuttle 3,798
- 22 Forest Lane 3,757
- 57 Westmoreland 3,283
- 9 Jefferson/Gaston 2,572
- 1 Malcolm X/Maple 2,568

Top 5 GoLink zone average weekday ridership

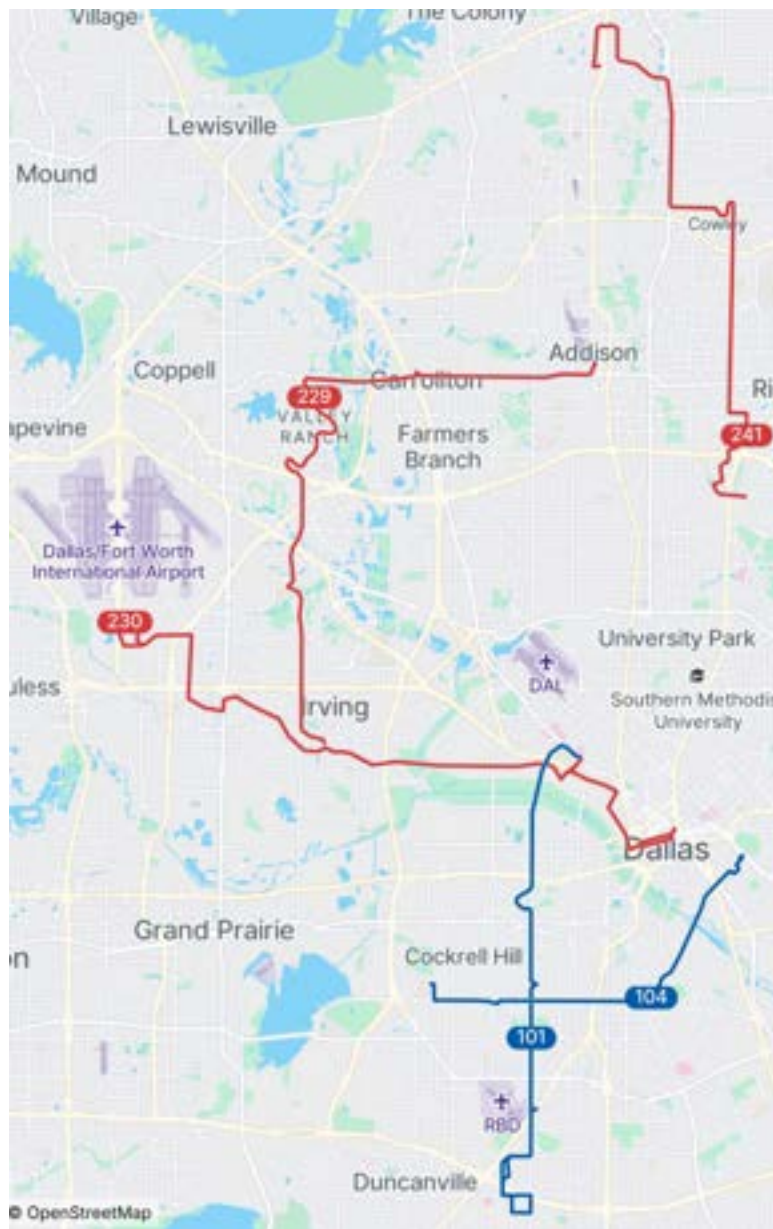
- Inland Port 713
- N. Central Irving 709
- Rowlett 623
- Passport Park 406
- Cypress Waters 359



FY26 Q1 High Ridership Local & Local Coverage

Top 5 bus route average weekday ridership

- 104 Illinois 1,729
- 241 Coit 1,725
- 101 Hampton 1,720
- 230 Irving Blvd 1,597
- 229 MacArthur/Beltline 1,445

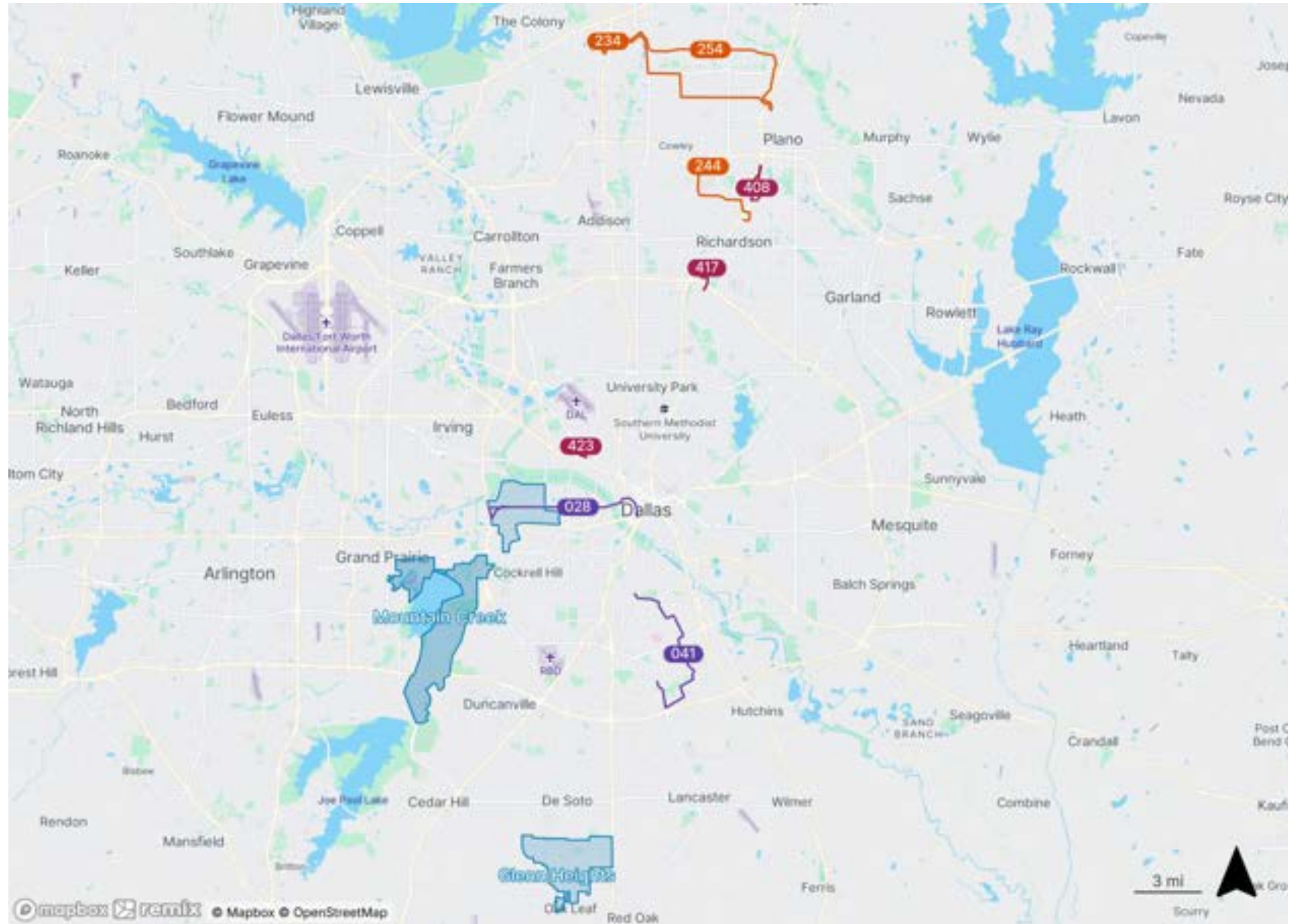


Is Performance Meeting Targets?

- Each route or service is compared to performance for other routes of the same type
- If performance is less than 75% of the average for a route/service type (133% above for subsidy/rider), the service is deficient for that measure
- If all applicable measures are deficient, the route fails to meet performance targets



FY26 Q1 Deficient Performers



FY26 Q1 Light Rail Performance by Line

Line	Riders/ Hour	Subsidy/Rider
Blue	88.83	\$8.97
Green	103.01	\$7.17
Orange	75.40	\$10.02
Red	113.11	\$6.75
Overall	93.82	\$8.12

Parking Lot Utilization

Overall Utilization Comparison

	FY25 Q1	FY26 Q1
Spaces Occupied	3,023	3,474
Total Spaces	22,009	20,638
Utilization Percentage	13.7%	16.8%



Top 5 Parking Lots

Station Name	Rail Line	Spots Occupied	Total # of Spots	Capacity Percentage
Parker Road	Red, Orange	559	2,020	27.7%
Downtown Rowlett	Blue	262	750	34.9%
Cityline/Bush Station	Red, Orange, Blue, Silver	186	1,193	15.6%
Beltline	Orange	182	597	30.5%
N Carrollton	Green	164	1,677	9.8%



DART

let's go.



DART.org